

SGX NIFTY : 7975 (16 Pt Down)

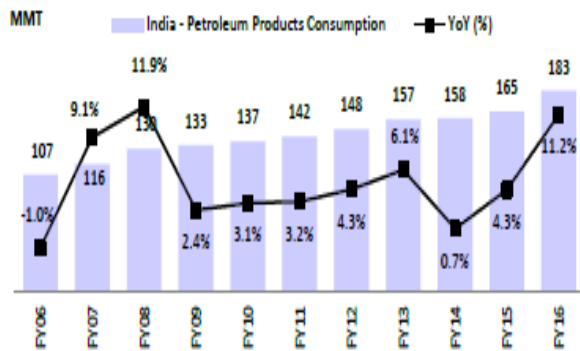
Quote of the Day

"Investors should be skeptical of history-based models. Constructed by a nerdy-sounding priesthood using esoteric terms such as beta, gamma, sigma and the like, these models tend to look impressive. Too often, though, investors forget to examine the assumptions behind the symbols."

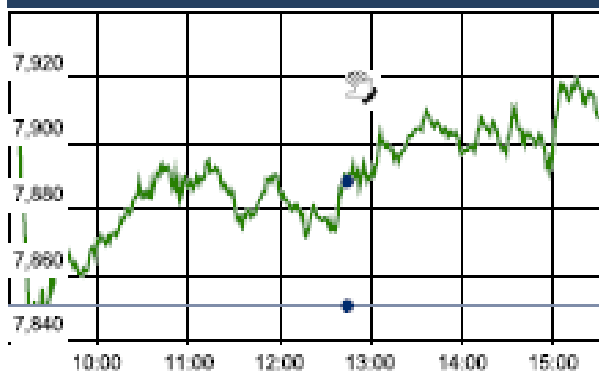
Warren Buffett

Chart of the Day

Indian Petrol Product Consumption trend



Index Action Nifty (18th Apr 16)



Index

Contents	Page	Coverage
News	2	Update
Economic Calendar	3	Update

Market

Name	Value	Change
Sensex	25,816.36	189.16
Nifty	7914.70	64.25
DOW	17,602.30	120.81
NASDAQ	4,940.33	(19.69)
CAC	4,566.48	59.64
DAX	10,349.59	229.28
FTSE	6,405.35	51.83
NIKKEI	16,954.32	79.88
HANG SENG	21,328.07	(108.14)
EW ALL SHARE	13705.26	102.78

Instituional Turnover

FII

Investor	Buy(Cr.)	Sale(Cr.)	Net(Cr.)
18-Apr-16	6118.62	5140.64	977.98
Mar,16	34437.51	32557.49	1880.02
2016	285577.92	285708.59	(130.67)

DII

Investor	Buy(Cr.)	Sale(Cr.)	Net(Cr.)
18-Apr-16	1628.89	1942.11	(313.22)
Mar,16	14172.45	14743.68	(571.23)
2016	127663.57	120675.93	6987.64

Commodity Price

Commodity/Currencies	Value	
GOLD	29326.00	↑
SILVER	39747.00	↑
CRUDEOIL	36.48	↑
COPPER	325.60	↑
NATURALGAS	137.10	↑
DOLLAR/RS.	66.55	↓
EURO/RS.	75.10	↑
POUND/RS.	95.14	↓

Market Snapshot

Top Price Performers

Top Performers 1D	% Change	Top Performers 1W	% Change	Top Performers 1M	% Change
MSPL	20.00	ELECTHERM	59.35	KAKATCEM	123.85
RUBYMILLS	19.99	RSSOFTWARE	49.01	LLOYDMETAL	85.63
BHARTISHIP	19.95	SIMPLEX	42.20	UTTAMSUGAR	78.23
NEXTMEDIA	19.88	MSPL	38.11	ELECTHERM	72.23
JMTAUTOLTD	19.44	GEECEE	36.63	KIRIINDUS	70.28

Worst Performers 1D	% Change	Worst Performers 1W	% Change	Worst Performers 1M	% Change
CHROMATIC	(12.85)	KSOILS	(21.77)	VIVIMEDLAB	(79.38)
SEZAL	(10.14)	SRSREAL	(21.56)	RAINBOWPAP	(61.01)
NUTEK	(9.38)	CHROMATIC	(19.09)	IVRCLINFRA	(35.47)
SURAJLTD	(7.69)	GMBREW	(18.47)	BILPOWER	(34.75)
LLOYDMETAL	(7.48)	SATRAPROP	(17.11)	SHREEKRPOL	(34.29)

Top News

- **JK Tyre & Industries** has completed the Rs 2,195-crore buyout of BK Birla flagship firm Kesoram Industries' tyre manufacturing plant at Haridwar, thus adding 100 lakh tyres per annum capacity and enabling the firm to enter the high-growth two- and three-wheeler tyre segment.

- **US subsidiary, Lupin Pharmaceuticals Inc** has launched its Fyavolv™ tablets (norethindrone acetate and ethinyl estradiol tablets USP, 0.5 mg/0.0025 mg and 1 mg/0.005 mg) in the US . US subsidiary, Lupin Pharmaceuticals Inc has launched its Fyavolv™ tablets (norethindrone acetate and ethinyl estradiol tablets USP, 0.5 mg/0.0025 mg and 1 mg/0.005 mg) in the US

- **Dr Reddy's Laboratories (DRL)** said its acute migraine treatment injection ZembraceSymTouch is now commercially available in the US market. Promius Pharma LLC, a subsidiary of DRL announced that ZembraceSymTouch injection is now commercially available in the US

- **DLF** initiated the process to sell promoters' 40 per cent stake in the rental arm, a deal estimated at Rs 12,000-14,000 crore. DLF had in October announced that its promoters will sell their stake in the DLF Cyber City Developers Ltd (DCCDL), which holds the bulk of office and retail complexes.

- **Tata Communications** has expanded its partnership with Asian Television Network (ATN) Canada by becoming its sole provider of global over-the-top (OTT) connectivity.

- **Hindustan Petroleum Corp** plans to invest around USD 3.8 billion to ramp up its refining capacity by two-thirds this decade, as the country's oil demand soars and to meet cleaner fuel standards. HPCL aims to raise its capacity to process about 500,000 barrels per day (bpd) of crude by investing around 250 billion rupees (USD 3.76 billion)

- **Alembic Pharmaceuticals** has received four observations from the US health regulator after the inspection of Panelav facility. The formulations facility of the company at Panelav, Halol was inspected by the USFDA from March 21 to 25. The company had received four observations which are being addressed by our regulator and quality team. The company, however, did not provide any details about the observations it has received from the United States Food and Drug Administration (USFDA).

- **Sugar output** fell by 8 percent to 24.34 million tonnes till April 15 of the current marketing year ending September, while exports stood at 1.35 million tonnes . Cane dues to be paid by mills to farmers remained lower at about Rs 13,300 crore so far this year as against Rs 21,800 crore in the year-ago

- **U.S. retail sales fell to a seasonally adjusted -0.3%**, from -0.1% in the preceding month . Analysts had expected retail sales to rise 0.1% last month.

- **U.S. PPI fell to a seasonally adjusted -0.1%**, from -0.2% in the preceding month. Analysts had expected U.S. PPI to rise 0.2% last month.

- **Euro zone industrial production** fell to a seasonally adjusted -0.8%, from 1.9% in the preceding month whose figure was revised down from 2.1%. Analysts had expected Euro zone industrial production to fall -0.7% last month.

- **U.S. API Weekly Crude Stock** rose to 6.200M, from -4.300M in the preceding week. Analysts had expected U.S. API Weekly Crude Stock to rise 1.000M last week.

Result Calendar Q4FY16

BSE Code	Company Name	Date	BSE Code	Company Name	Date
500092	CRISIL	19-Apr-16	506395	COROMANDEL	27-Apr-16
511288	GRUH	19-Apr-16	523708	EIMCOELECO	27-Apr-16
534623	JUPITERIN	19-Apr-16	505700	ELECON	27-Apr-16
523704	MASTEK	19-Apr-16	523754	EPCIN	27-Apr-16
511766	MUTHTFN	19-Apr-16	500086	EXIDEIND	27-Apr-16
511559	TIMESGTY	19-Apr-16	505790	FAGBEARING	27-Apr-16
520066	JAYBARMARU	20-Apr-16	500150	FOSECOIND	27-Apr-16
500405	SUPPETRO	20-Apr-16	532345	GATI	27-Apr-16
509966	VSTIND	20-Apr-16	509675	HIL	27-Apr-16
507685	WIPRO	20-Apr-16	500165	KANSAINER	27-Apr-16
532175	CYIENT	21-Apr-16	532400	KPIT	27-Apr-16
500188	HINDZINC	21-Apr-16	534690	LAKSHVILAS	27-Apr-16
532187	INDUSINDBK	21-Apr-16	522034	SHANTIGEAR	27-Apr-16
511585	REGTRUS	21-Apr-16	532498	SHRIRAMCIT	27-Apr-16
509930	SUPREMEIND	21-Apr-16	532648	YESBANK	27-Apr-16
506597	AMAL	22-Apr-16	500425	AMBUJACEM	28-Apr-16
522134	ARTSONEN	22-Apr-16	520119	ASAL	28-Apr-16
532792	CAIRN	22-Apr-16	511196	CANFINHOME	28-Apr-16
500089	DICIND	22-Apr-16	500096	DABUR	28-Apr-16
526227	FILATEX	22-Apr-16	500233	KAJARIACER	28-Apr-16
500180	HDFCBANK	22-Apr-16	538771	PINCON	28-Apr-16
502330	IPAPPM	22-Apr-16	507300	RAVALSUGAR	28-Apr-16
532756	MAHINDCIE	22-Apr-16	531359	SRAMSET	28-Apr-16
532663	SASKEN	22-Apr-16	500408	TATAELXSI	28-Apr-16
511736	USHDI	22-Apr-16	501242	TCIFINANCE	28-Apr-16
516030	YASHPPR	22-Apr-16	505412	WENDT	28-Apr-16
531595	CGCL	23-Apr-16	532331	AJANTPHARM	29-Apr-16
522245	IYKOTHITE	23-Apr-16	500027	ATUL	29-Apr-16
532720	M&MFIN	23-Apr-16	511243	CHOLAFIN	29-Apr-16
526935	MBPARIKH	23-Apr-16	500033	FORCEMOT	29-Apr-16
517447	RSSOFTWARE	23-Apr-16	511676	GICHSGFIN	29-Apr-16
533179	PERSISTENT	24-Apr-16	532174	ICICIBANK	29-Apr-16
500002	ABB	25-Apr-16	523457	LINDEINDIA	29-Apr-16
531201	SHILCTECH	25-Apr-16	500674	SANOFI	29-Apr-16
513010	TATASPONGE	25-Apr-16	531003	SWRNASE	29-Apr-16
524661	WELCURE	25-Apr-16	530243	MANGASOF	30-Apr-16
500215	ATFL	26-Apr-16	516062	NATPLY	30-Apr-16
532215	AXISBANK	26-Apr-16	532504	NAVINFLUOR	30-Apr-16
531340	BERVINL	26-Apr-16	500452	NEPCAGRO	30-Apr-16
532523	BIOCON	26-Apr-16	500301	NEPCMICON	30-Apr-16
500670	GNFC	26-Apr-16	531077	NEPCPAPER	30-Apr-16
534816	INFRADEL	26-Apr-16	521192	NEPCTEX	30-Apr-16
532313	MAHLIFE	26-Apr-16	524204	TEEAI	30-Apr-16
532500	MARUTI	26-Apr-16	500010	HDFC	02-May-16
500355	RALLIS	26-Apr-16	500264	MAFATIND	02-May-16
500407	SWARAJENG	26-Apr-16	500040	CENTURYTEX	03-May-16
539268	SYNGENE	26-Apr-16	532424	GODREJCP	03-May-16
532454	BHARTIARTL	27-Apr-16	511208	IVC	03-May-16

532638	SHOPERSTOP	03-May-16	500034	BAJFINANCE	24-May-16
532343	TVSMOTOR	03-May-16	523736	DPL	24-May-16
500280	CENTENKA	04-May-16	523642	PIIND	24-May-16
504112	NELCO	04-May-16	532977	BAJAJ-AUTO	25-May-16
533228	SKSMICRO	04-May-16	500490	BAJAJHLDNG	25-May-16
532513	TVSELECT	04-May-16	500660	GLAXO	25-May-16
520113	VESUVIUS	04-May-16	533217	HMVL	25-May-16
532953	VGUARD	04-May-16	532777	NAUKRI	25-May-16
531162	EMAMILTD	05-May-16	532662	HTMEDIA	26-May-16
507815	GILLETTE	05-May-16	500387	SHREECEM	26-May-16
533150	GODREJPROP	05-May-16	500414	TIMEX	26-May-16
500730	NOCIL	05-May-16	531049	NEELKAN	27-May-16
500459	PGHH	05-May-16	505800	RANEHOLDIN	27-May-16
502420	ORIENTPPR	06-May-16	506655	SUDARSCHER	27-May-16
505665	ABCBEARS	10-May-16	508939	BLCISER	28-May-16
511728	KZLFIN	10-May-16	511092	JMDTELEFILM	28-May-16
500085	CHAMBLFERT	11-May-16	533202	NITESHEST	28-May-16
531213	MANAPPURAM	12-May-16	524038	VENLONENT	28-May-16
500790	NESTLEIND	12-May-16	500067	BLUESTARCO	30-May-16
524378	JMDEPACKR	13-May-16	539131	CLLIMITED	30-May-16
526947	LAOPALA	13-May-16	531608	GORANIN	30-May-16
534742	ZUARI	13-May-16	531737	GREENCREST	30-May-16
500780	ZUARIGLOB	13-May-16	532851	INSECTICID	30-May-16
532166	ALKASEC	14-May-16	539446	KRISHFAB	30-May-16
532133	IFGLREFRAC	14-May-16	506113	LIFELINE	30-May-16
500133	ESABINDIA	19-May-16	531319	MARUTISE	30-May-16
532988	RANEENGINE	19-May-16	535514	PRIMECAPM	30-May-16
533023	WABCOINDIA	19-May-16	530125	SAMRATPH	30-May-16
524558	NEULANLAB	20-May-16	526532	SFPIL	30-May-16
532661	RML	20-May-16	531411	TUNITEX	30-May-16
522113	TIMKEN	20-May-16	521226	UNIROYAL	30-May-16
526775	VALIANT	20-May-16	531831	UNISH	30-May-16
500266	MAHSCOOTER	23-May-16	539123	VBIND	30-May-16
532987	RBL	23-May-16	511690	WARNER	30-May-16
532978	BAJAJFINSV	24-May-16			

EARNING ESTIMATE Q4FY16

BSE Code	Company Name	Date	BSE Code	Company Name	Date
500188	HINDZINC	2804	-32.00	1327	-33.90
532792	CAIRN	1690	-36.90	-40	PL
532175	CYIENT	820	12.30	101	7.60
532819	MINDTREE	1300	41.60	147	14.50
532540	TCS	28457	17.50	6196	4.90
507685	WIPRO	13735	13.10	2215	-2.60
500180	HDFCBANK	7206	19.80	3370	20.10
532187	INDUSINDBK	1203	30.00	628	26.80
511288	GRUH	157	28.10	86	15.70
500253	LICHSGFIN	878	35.10	482	27.50
532720	M&MFIN	936	6.00	258	-22.70

Economic Calendar

Country	Monday 18th April 16	Tuesday 19th April 16	Wednesday 20th April 16	Thursday 21th April 16	Friday 22th April 16
US		Building Permits , Housing Starts.	Existing Home Sales .	Philly Fed Manufacturing Index , Unemployment Claims , HPI m/m, Flash Manufacturing PMI , Flash Services PMI , CB Leading Index m/m , Natural Gas Storage.	
UK/EURO ZONE	German Buba Monthly Report.	German ZEW Economic Sentiment , ZEW Economic Sentiment , Current Account .	Average Earnings Index 3m/y , Claimant Count Change, German PPI m/m , Unemployment Rate , Italian Retail Sales m/m , CBI Industrial Order Expectations .	French Flash Manufacturing PMI , French Flash Services PMI , Spanish Unemployment Rate , German Constitutional Court Ruling , German Flash Manufacturing PMI , German Flash Services PMI , Flash Manufacturing PMI , Flash Services PMI , Minimum Bid Rate , ECB Press Conference .	German Ifo Business Climate , Belgian NBB Business Climate .
INDIA					



(Regn. No. : INP 000004011)

Narnolia Securities Ltd.

Narnolia Research Lab

Stellar IT Park | 5th Floor | Office Space No. 6 | Tower-II Ind Plot No. C-25 | Sector-62 | Noida | Ph : 0120-4215110

Narnolia Securities Ltd.

201 | 2nd Floor | Marble Arch Building | 236B-AJC Bose Road Kolkata-700 020 Ph : 033-40501500
Email : narnolia@narnolia.com website :www.narnolia.com