

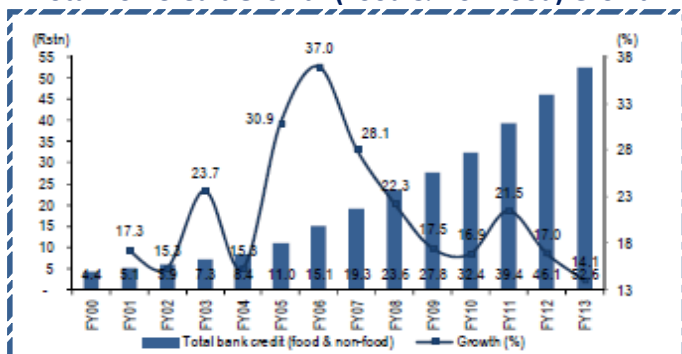
Day of the Quote

"What's the sense in getting rich if you just stare at the ticker tape all day?"

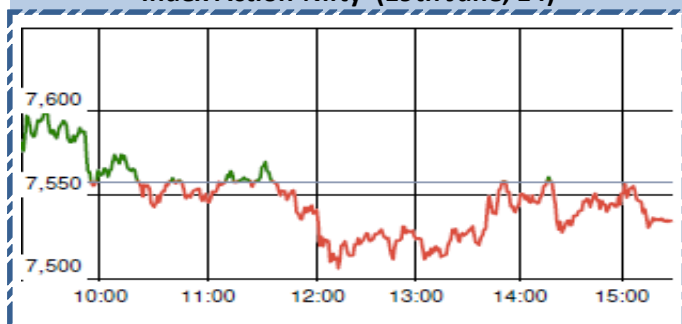
Warren Buffett

Chart of the Day

Total non Credit Growth (Food & Non Food) Growth



Index Action-Nifty (19th June, 14)



Index

Contents	Page	Coverage
News	3	UPDATE
Derivative snapshot	2	UPDATE
Economic calendar	4	UPDATE

SGX NIFTY : 7557
(5 pts Up)

MARKET

Name	Value	Change
Sensex	25201.8	(44.45)
Nifty	7540.7	(17.50)
DOW	16921.46	14.84
NASDAQ	4359.33	(3.51)
CAC	4563.04	32.67
DAX	10004	73.67
FTSE	6808.11	29.55
NIKKIE	15399.57	38.57
HANG SENG	23202.75	37.02
EW ALL SHARE	12692.07	(71.19)

INSTITUTIONAL TURNOVER

FII

Investor	Buy(Cr.)	Sale(Cr.)	Net(Cr.)
19th June,14	3982.66	4,403.17	(420.51)
June,14	64321.47	59,578.89	4742.58
2014	466792.17	4,16,045.35	50746.82

DII

Investor	Buy(Cr.)	Sale(Cr.)	Net(Cr.)
19th June,14	1213.19	1,331.00	(117.81)
June,14	18980.12	22,517.45	(3537.33)
2014	153798.31	1,83,460.49	(29662.18)

COMMODITY PRICE

COMMODITY/CURRENCIES	Value	
GOLD	27635.00	↑
SILVER	44361.00	↑
CRUDEOIL	6418.00	↑
COPPER	409.00	↑
NATURALGAS	276.80	↓
DOLLAR/RS.	60.06	↓
EURO/RS.	81.83	↑
POUND/RS.	102.43	↑

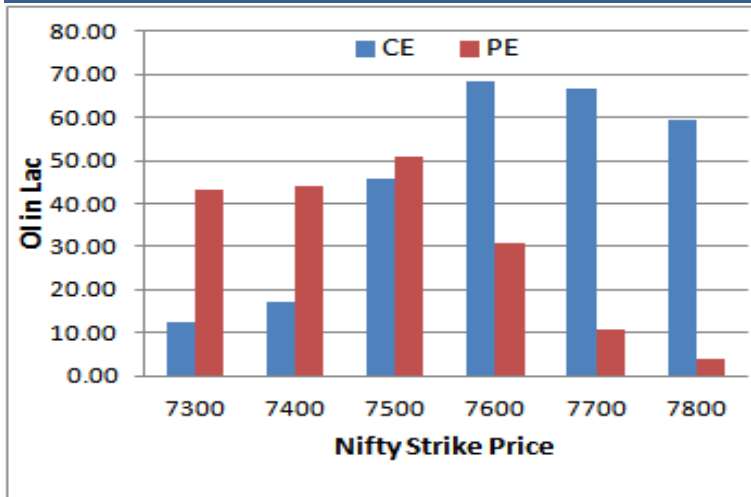
Narnolia Securities Ltd.

124, 1st floor 7/1, Lords Sinha Road Kolkata -700071. Ph 033-22821251 Toll Free no : 1-800-345-4000
email: research@narnolia.com, website : www.narnolia.com

NIFTY SNAPSHOT

Nifty Spot	7540.70(-17.50)
Nifty June 2014 Future	7557
Nifty July 2014 Future	7591
Nifty June 2014 Open Interest	14211850
Nifty July 2014 Open Interest	2180000
7 DMA of Spot Nifty	7583
21 DMA of Spot Nifty	7464
50 DMA of Spot Nifty	7115
VOLATILITY INDEX (VIX)	18.74(+0.16)
PUT CALL RATIO	0.98

Nifty (June Series) Option OI Distribution:



Activity of Nifty (June Series) Strike

Strike	CALL		PUT	
	OI	% Chng	OI	% Chng
7300	1241500	-1.0	4316750	-7.6
7400	1720300	-4.1	4425750	-3.2
7500	4591700	7.3	5110650	-4.6
7600	6849000	14.3	3081050	-1.3
7700	6689750	10.6	1057750	-14.5
7800	5952200	8.1	387750	-4.8

Fresh Long Seen In (Rising OI -Rising Price)

Scrip	OI	OI ch%	CMP	Ch%
COLPAL	2,99,750	27.6	1575.0	3.3
TATAMTRDVR	225,36,000	18.5	316.4	7.0
INDUSINDBK	80,50,500	4.0	557.3	3.0
LUPIN	84,19,500	3.5	1010.6	1.2
TITAN	80,37,000	2.9	320.3	1.6

PCR (OI)

STOCK	T1	T2
COLPAL	0.54	0.25
ASIANPAINT	0.78	0.49
UBL	0.13	0.09
HDIL	0.45	0.35
HCLTECH	0.56	0.43



FIIs Activity (Fig in Cr)

Segment	Buy	Sell	Net
INDEX FUTURE	2,264	2,725	(461)
INDEX OPTION	19,610	18,314	1,296
STOCK FUTURE	3,727	3,544	184
STOCK OPTION	2,902	2,916	(13)
TOTAL	28,504	27,499	1,006

Fresh Shorts Seen In: (Rising OI -Falling Price)

Scrip	OI	OI ch%	CMP	Ch%
IDEA	388,38,000	12.6	137.7	-3.9
ONGC	213,22,000	12.3	420.5	-5.1
BPCL	36,32,000	11.5	566.3	-4.2
MCDOWELL-N	80,53,125	10.9	2589.3	-7.7
ADANIENIT	102,27,000	6.8	460.2	-4.1

PCR (OI)

STOCK	T1	T2
BPCL	0.51	0.79
HINDPETRO	0.45	0.59
KOTAKBANK	0.54	0.66
INDIACEM	0.53	0.62
SAIL	0.31	0.36

Markets Snapshot

Top Price Performers

Top Performers 1D	% Change	Top Performers 1W	% Change	Top Performers 1M	% Change
RUSHIL	19.99	IFBAGRO	34.84	ROLATAN	147.83
HESTERBIO	19.87	HIMATSEIDE	34.58	WEBELSOLAR	146.76
ORIENTCONT	17.50	SMLISUZU	33.53	INDOSOLAR	144.64
SPIC	14.21	ORIENTCONT	30.48	MVL	134.91
DATAMATICS	12.78	KAMATHOTEL	29.57	AUSTRAL	129.31

Worst Price Performers

Worst Performers 1D	% Change	Worst Performers 1W	% Change	Worst Performers 1M	% Change
SEINV	(10.15)	RICOHQ	(42.29)	GLOBALCA	(47.69)
RICOHQ	(9.98)	SHRGLTR	(27.46)	SHRGLTR	(45.53)
MCDOWELL-N	(7.73)	DHANUS	(22.73)	WINSOMEDJ	(38.58)
PEERABASAN	(7.10)	ERAINFRA	(22.42)	SHREETULSI	(35.88)
SUMREETINDS	(6.92)	TECPRO	(22.19)	INDINFO	(31.91)

Top News :

• **Just Dial Mgt Guideline** : Company is confident of growing at 25-30 percent this year adding that FY15 will be better than FY14. Company says that while it is too early to talk about the expected revenues from Search Plus, a new service to make restaurant booking and buy merchandise, its monetization will begin in FY16.

• **Sintex Mgt Guideline** : Company is setting up a spinning unit with 0.3 million spindles at a cost of Rs 1,800 crore in Gujarat and later plans to ramp it up to 1 million spindles with a total capex of over Rs 5,000 crore over the next five years. The company expects to commission the first phase of 0.3 million spindles in Q4FY15 with full commencement in October 2015. The company expects an annualized revenue of Rs 1,800 crore (1x capex) from FY16, with EBITDA margins of 27-30 percent and IRR of 18-20 percent, considering that export to domestic ratio is about 70:30.

• **Suzlon Group** announced that it has received the notice to proceed (NTP) from CLP India , a leading investor owned power business in Asia & one of the largest foreign investors in the indian power sector , for a 100.8 MW wind power project .

• **Mahindra Holidays & Resorts India Ltd** has purchased 100% Equity Share Capital of M/s. Competent Hotels Private Limited ("CHPL"), which owns a Resort comprising of 60 rooms in Manali, Himachal Pradesh. Consequent to this, CHPL has become wholly owned subsidiary of the Company.

• **Aditya Birla Nuvo Ltd** has now informed that the Company have revoked the suspension of work and production has started at the Company's Aditya Birla Insulators, Rishra Plant with effect from June 18, 2014, following the wage settlement.

• **Esab India Ltd** have announced a voluntary separation scheme for all permanent workmen and permanent graded staff, who are on the rolls of the Company at Company's Khardah & Taratala plants at Kolkata. The Board of directors have accorded their approval to the said scheme on June 16, 2014.

• **UPL** has completed the transaction to sell of entire stake of 50% in the Brazilian Agrochemical Company Sipcam UPL Brasil S.A. The gross consideration amount of the transaction is \$58.million (approximately Rs 351 crore)

• **The Confederation of British Industry** said its index of industrial order expectations rose by 11.0 point to a reading of 11.0 this month from May's reading of 0.0. Analysts had expected the index to improve by 3.0 points to 3.0 in June.

• **Statistics Netherlands said that Dutch Unemployment Rate** fell to a seasonally adjusted 8.6%, from 8.7% in the preceding month. Analysts had expected Dutch Unemployment Rate to remain unchanged at 8.7% last month.

• **U.K. Office for National Statistics** said retail sales decreased by a seasonally adjusted 0.5% last month, in line with forecasts. April retail sales were revised down to a 1% gain from a previously reported rise of 1.3%.

Economic Calendar					
	Monday 16-Jun-14	Tuesday 17-Jun-14	Wednesday 18-Jun-14	Thursday 19-Jun-14	Friday 20-Jun-14
US	PPI m/m , Core PPI m/m ,Mortgage Delinquencies ,Crude Oil Inventories .	Core CPI m/m ,Unemployment Claims ,CPI m/m ,Empire State Manufacturing Index ,TIC Long-Term Purchases ,Capacity Utilization Rate ,Philly Fed Manufacturing Index ,NAHB Housing Market Index .	Building Permits ,Housing Starts ,Prelim UoM Consumer Sentiment ,Prelim UoM Inflation Expectations .		
UK/EURO ZONE	Claimant Count Change ,Unemployment Rate ,Average Earnings Index 3m/y ,Industrial Production m/m ,BOE Gov Carney Speaks ,BOE Inflation Report .	French Prelim GDP q/q ,German Prelim GDP q/q ,ECB Monthly Bulletin ,Italian Prelim GDP q/q ,CPI y/y ,Core CPI y/y ,Flash GDP q/q .	French Prelim Non-Farm Payrolls q/q ,Italian Trade Balance ,Trade Balance ,10-y Bond Auction ,30-y Bond Auction .	German Buba Monthly Report .	German PPI m/m ,CPI y/y ,PPI Input m/m ,Public Sector Net Borrowing ,RPI y/y .
INDIA	WPI Data .				



Narnolia Securities Ltd

124, 1st floor 7/ 1, Lords Sinha Road Kolkata 700071, Ph 033-
22821251 Toll Free no : 1-800-345-4000

email: research@narnolia.com,
website : www.narnolia.com

Risk Disclosure & Disclaimer: This report/message is for the personal information of the authorized recipient and does not construe to be any investment, legal or taxation advice to you. Narnolia Securities Ltd. (Hereinafter referred as NSL) is not soliciting any action based upon it. This report/message is not for public distribution and has been furnished to you solely for your information and should not be reproduced or redistributed to any other person in any form. The report/message is based upon publicly available information, findings of our research wing "East wind" & information that we consider reliable, but we do not represent that it is accurate or complete and we do not provide any express or implied warranty of any kind, and also these are subject to change without notice. The recipients of this report should rely on their own investigations, should use their own judgment for taking any investment decisions keeping in mind that past performance is not necessarily a guide to future performance & that the the value of any investment or income are subject to market and other risks. Further it will be safe to assume that NSL and /or its Group or associate Companies, their Directors, affiliates and/or employees may have interests/ positions, financial or otherwise, individually or otherwise in the recommended/mentioned securities/mutual funds/ model funds and other investment products which may be added or disposed including & other mentioned in this report/message.