

SGX NIFTY : 8552 (2.50 Pt Down)

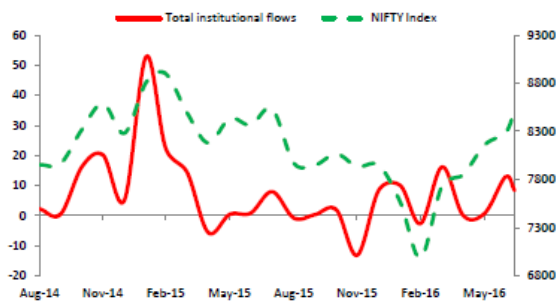
Quote of the Day

"We like stocks that generate high returns on invested capital where there is a strong likelihood that it will continue to do so. For example, the last time we bought Coca-Cola, it was selling at about 23 times earnings. Using our purchase price and today's earnings, that makes it about 5 times earnings. It's really the interaction of capital employed, the return on that capital, and future capital generated versus the purchase price today."

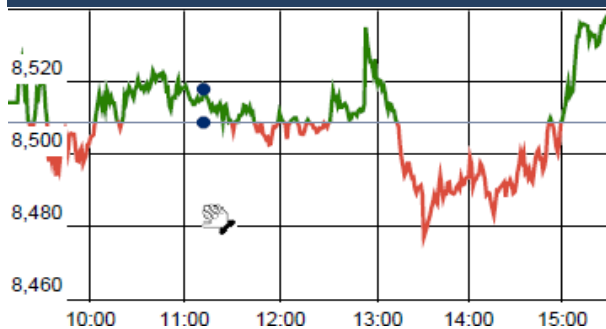
Warren Buffett

Chart of the Day

Institutional flow and Nifty



Index Action Nifty (14th July 16)



Index

| Contents | Page | Coverage |
|-------------------|------|----------|
| News | 2 | Update |
| Economic Calendar | 3 | Update |

Market

| Name | Value | Change |
|--------------|-----------|----------|
| Sensex | 27,787.62 | 40.96 |
| Nifty | 8508.70 | (32.70) |
| DOW | 18,905.15 | (18.25) |
| NASDAQ | 5,055.78 | 26.19 |
| CAC | 4,330.13 | (27.61) |
| DAX | 9,981.24 | (81.89) |
| FTSE | 6,697.37 | 1.95 |
| NIKKEI | 16,603.83 | (119.84) |
| HANG SENG | 21,648.39 | (26.81) |
| EW ALL SHARE | 14806.12 | 39.97 |

Instituional Turnover

FII

| Investor | Buy(Cr.) | Sale(Cr.) | Net(Cr.) |
|-----------|-----------|-----------|----------|
| 19-Jul-16 | 4237.66 | 3688.76 | 548.90 |
| July,16 | 41511.87 | 36994.03 | 4517.84 |
| 2016 | 555046.13 | 544546.74 | 10499.39 |

DII

| Investor | Buy(Cr.) | Sale(Cr.) | Net(Cr.) |
|-----------|-----------|-----------|-----------|
| 19-Jul-16 | 1737.67 | 2115.10 | (377.43) |
| July,16 | 17566.09 | 20952.57 | (3386.48) |
| 2016 | 232024.17 | 224951.87 | 7072.30 |

Commodity Price

| Commodity/Currencies | Value | |
|----------------------|----------|---|
| GOLD | 31092.00 | ↑ |
| SILVER | 47024.00 | ↓ |
| CRUDEOIL | 46.91 | ↑ |
| COPPER | 338.60 | ↓ |
| NATURALGAS | 183.50 | ↓ |
| DOLLAR/RS. | 67.10 | ↓ |
| EURO/RS. | 73.93 | ↓ |
| POUND/RS. | 87.82 | ↓ |

Market Snapshot

Top Price Performers

| Top Performers 1D | % Change | Top Performers 1W | % Change | Top Performers 1M | % Change |
|-------------------|----------|-------------------|----------|-------------------|----------|
| JINDCOT | 19.95 | LAKSHMIEFL | 48.83 | AMTEKINDIA | 100.31 |
| GUJFLUORO | 14.45 | BVCL | 37.73 | JINDCOT | 78.17 |
| BIRLACOT | 14.29 | JINDCOT | 33.59 | DECNGOLD | 74.28 |
| LAKSHMIEFL | 14.17 | JHS | 32.19 | AROGRANITE | 71.28 |
| BSELINFRA | 12.31 | AROGRANITE | 30.58 | BVCL | 67.20 |

| Worst Performers 1D | % Change | Worst Performers 1W | % Change | Worst Performers 1M | % Change |
|---------------------|----------|---------------------|----------|---------------------|----------|
| BBL | (11.30) | BLBLIMITED | (21.17) | MANDHANA | (64.15) |
| PRAENG | (9.62) | SIMPLEX | (18.42) | DCMSRMIND | (61.72) |
| BANG | (8.86) | SHRENUJ | (18.42) | SHRENUJ | (40.73) |
| MINDTREE | (8.37) | MANDHANA | (18.39) | SUNASIAN | (29.62) |
| ARSSINFRA | (7.74) | SUPREMETEX | (18.39) | KPIT | (28.56) |

Top News

- **Dabur Mgt guideline** : Dabur has acquired a South African cosmetics company Discaria Trading for an undisclosed amount. The company will be used as a base for local supply chain expansion and perhaps, other acquisitions in future . South Africa is a big market and it will be essential to have a good local supply chain, Duggal said adding the company plans to sell haircare products in the country. The company generates USD 5-10 million in revenues from South African business,

- **Ashoka Buildcon** has bagged two contracts valued at Rs 2,086 crore from the National Highways Authority of India (NHAI) in Punjab and Jharkhand. The company has emerged as the lowest bidder for the Rs 1,600 crore 4/6 laning of Kharar to Ludhiana section of NH-95 project in Punjab. The project will be developed on the hybrid annuity model . It has also received Letter of Award from NHAI for 2/4 laning with paved shoulders of Govindpur (Rajgunj)- Chas -West Bengal Border section of NH-32 in Jharkhand on NHDP Phase-IV on EPC mode. The accepted bid value of the project is Rs 486 crore

- **Essel Propack** has started a new facility in Colombia to cater to growing demand in the South American market. The company has tube-packaging operations already in the country and the new unit will help the company double its capacity in the country . The company wanted to expand and build capabilities in Colombia as it has been a profitable region, he said. Two factories would mean business costs have gone up, but Colombia is still a profit-generating business for Essel Propack

- **Aro Granite Industries'** business has shown improvement in international markets. The company's sales jumped on the back of corrective measures taken by the management like adding warehousing and a focus on high productivity

- **NALCO** -Inks memorandum of understanding (MoU) with government for higher production -FY17 revenue target excluding excise duty set at Rs 7,100 crore -Annual production target at 2.13 MT of alumina, 3.85 lakh tonne of aluminium -FY17 capex set at Rs 1,021 crore

- **NTPC** will strive to generate 248 billion units during the current fiscal. NTPC...signed a Memorandum of Understanding (MoU) with Govt of India for the year 2016-17...As per the signed MoU, NTPC shall strive to generate 248 billion units during the year under "Excellent" category . NTPC has a CAPEX target of Rs 30,000 crore under Excellent category

- **City Union Bank** expects the slippages ratio to come down to 1.15-2 percent, ahead of its first quarter earnings. It will take about 6 more quarters for slippages to cross 2 percent . The bank is capital sufficient, and projects a good loan growth . Bank's capital adequacy ratio was 15.6 percent and gross NPA at 2.4 percent in FY16.

- **Polish Retail Sales** rose to a seasonally adjusted annual rate of 4.6%, from 2.2% in the preceding quarter. Analysts had expected Polish Retail Sales to rise to 3.7% in the last quarter.

- **Euro zone ZEW economic sentiment** fell to a seasonally adjusted -14.7, from 20.2 in the preceding month. Analysts had expected Euro zone ZEW economic sentiment to fall to 12.3 last month.

- **U.K. Retail Price Inflation** rose to a seasonally adjusted 1.6%, from 1.4% in the preceding quarter. Analysts had expected U.K. Retail Price Inflation to rise to 1.5% in the last quarter.

- **U.S. TIC long term purchases** rose to a seasonally adjusted 41.1B, from -67.4B in the preceding month whose figure was revised up from -79.6B. Analysts had expected U.S. TIC long term purchases to rise 31.6B last month.

- **New Zealand said that CPI** rose to a seasonally adjusted 0.4%, from 0.2% in the preceding quarter . Analysts had expected CPI to rise 0.5% in the last quarter.

| BSE Code | Company Name | Result Date | BSE Code | Company Name | Result Date |
|----------|--------------|-------------|----------|--------------|-------------|
| 500174 | GLFL | 19-Jul-16 | 526299 | MPHISIS | 23-Jul-16 |
| 523457 | LINDEINDIA | 19-Jul-16 | 531254 | OPTIFIN | 23-Jul-16 |
| 532538 | ULTRACEMCO | 19-Jul-16 | 539921 | SEIL | 23-Jul-16 |
| 507685 | WIPRO | 19-Jul-16 | 502450 | SESHAPAPER | 23-Jul-16 |
| 500093 | CROMPGREAV | 20-Jul-16 | 506690 | UNICHEMLAB | 23-Jul-16 |
| 500150 | FOSECOIND | 20-Jul-16 | 507525 | AMRITCORP | 25-Jul-16 |
| 507438 | IFBAGRO | 20-Jul-16 | 520119 | ASAL | 25-Jul-16 |
| 524109 | KABRAEXTRU | 20-Jul-16 | 533229 | BAJAJCORP | 25-Jul-16 |
| 521248 | KITEX | 20-Jul-16 | 507886 | DHRUVES | 25-Jul-16 |
| 519570 | LAKSHMIO | 20-Jul-16 | 523708 | EIMCOELECO | 25-Jul-16 |
| 531209 | NUCLEUS | 20-Jul-16 | 514167 | GANECOS | 25-Jul-16 |
| 523648 | PLASTIBLEN | 20-Jul-16 | 500171 | GHCL | 25-Jul-16 |
| 532663 | SASKEN | 20-Jul-16 | 526797 | GREENPLY | 25-Jul-16 |
| 500472 | SKFINDIA | 20-Jul-16 | 523398 | HITACHIOM | 25-Jul-16 |
| 500002 | ABB | 21-Jul-16 | 535789 | IBULHSGFIN | 25-Jul-16 |
| 532475 | APTECHT | 21-Jul-16 | 532162 | JKPAPER | 25-Jul-16 |
| 533228 | BHARATFIN | 21-Jul-16 | 533302 | KICL | 25-Jul-16 |
| 532523 | BIOCON | 21-Jul-16 | 500235 | KSL | 25-Jul-16 |
| 532792 | CAIRN | 21-Jul-16 | 500266 | MAHSCOOTER | 25-Jul-16 |
| 500670 | GNFC | 21-Jul-16 | 500126 | MERCK | 25-Jul-16 |
| 500180 | HDFCBANK | 21-Jul-16 | 532777 | NAUKRI | 25-Jul-16 |
| 500292 | HEIDELBERG | 21-Jul-16 | 532504 | NAVINFLUOR | 25-Jul-16 |
| 500440 | HINDALCO | 21-Jul-16 | 539016 | NEIL | 25-Jul-16 |
| 505726 | IFBIND | 21-Jul-16 | 532988 | RANEENGINE | 25-Jul-16 |
| 500241 | KIRLOSBROS | 21-Jul-16 | 522034 | SHANTIGEAR | 25-Jul-16 |
| 500247 | KOTAKBANK | 21-Jul-16 | 539378 | SML | 25-Jul-16 |
| 523782 | MITSHI | 21-Jul-16 | 530231 | SUBSM | 25-Jul-16 |
| 532987 | RBL | 21-Jul-16 | 514211 | SUMEETINDS | 25-Jul-16 |
| 530883 | SUCROSA | 21-Jul-16 | 513010 | TATASPONGE | 25-Jul-16 |
| 539268 | SYNGENE | 21-Jul-16 | 500425 | AMBUJACEM | 26-Jul-16 |
| 532215 | AXISBANK | 22-Jul-16 | 531310 | AVAILFC | 26-Jul-16 |
| 506365 | CHEMOPH | 22-Jul-16 | 532978 | BAJAJFINSV | 26-Jul-16 |
| 533167 | COROENGG | 22-Jul-16 | 500034 | BAJFINANCE | 26-Jul-16 |
| 539844 | EQUITAS | 22-Jul-16 | 531595 | CGCL | 26-Jul-16 |
| 500469 | FEDERALBNK | 22-Jul-16 | 506395 | COROMANDEL | 26-Jul-16 |
| 505283 | KIRLPNU | 22-Jul-16 | 500124 | DRREDDY | 26-Jul-16 |
| 532720 | M&MFIN | 22-Jul-16 | 500123 | ELANTAS | 26-Jul-16 |
| 533179 | PERSISTENT | 22-Jul-16 | 505700 | ELECON | 26-Jul-16 |
| 532661 | RML | 22-Jul-16 | 500650 | EXCELINDUS | 26-Jul-16 |
| 500674 | SANOFI | 22-Jul-16 | 532809 | FSL | 26-Jul-16 |
| 504960 | STEWARTQ | 22-Jul-16 | 534063 | FUTSOL | 26-Jul-16 |
| 539871 | THYROCARE | 22-Jul-16 | 509567 | GOACARBON | 26-Jul-16 |
| 532410 | TRANSCOR | 22-Jul-16 | 532659 | IDFC | 26-Jul-16 |
| 522134 | ARTSONEN | 23-Jul-16 | 539437 | IDFCBANK | 26-Jul-16 |
| 526433 | ASMTEC | 23-Jul-16 | 534816 | INFRATEL | 26-Jul-16 |
| 524330 | JAYAGROGN | 23-Jul-16 | 500210 | INGERRAND | 26-Jul-16 |
| 517415 | LEENEE | 23-Jul-16 | 504786 | INVPRECQ | 26-Jul-16 |

| | | | | | |
|--------|------------|-----------|--------|------------|-----------|
| 590003 | KARURVYSYA | 26-Jul-16 | 532313 | MAHLIFE | 28-Jul-16 |
| 500250 | LGBBROSLTD | 26-Jul-16 | 531727 | MENNPIS | 28-Jul-16 |
| 532756 | MAHINDCIE | 26-Jul-16 | 513496 | MEWATZI | 28-Jul-16 |
| 538970 | MANVIJAY | 26-Jul-16 | 533398 | MUTHOOTFIN | 28-Jul-16 |
| 523642 | PIIND | 26-Jul-16 | 500313 | OILCOUNTUB | 28-Jul-16 |
| 532460 | PONNIERODE | 26-Jul-16 | 504093 | PANAENERG | 28-Jul-16 |
| 500337 | PRIMESECU | 26-Jul-16 | 530931 | STANPACK | 28-Jul-16 |
| 512591 | PULSRIN | 26-Jul-16 | 532156 | VAIBHAVGBL | 28-Jul-16 |
| 500407 | SWARAJENG | 26-Jul-16 | 501370 | WALCHPF | 28-Jul-16 |
| 500408 | TATAELXSI | 26-Jul-16 | 512587 | ZODJRD MKJ | 28-Jul-16 |
| 532343 | TVSMOTOR | 26-Jul-16 | 511359 | ADMANUM | 29-Jul-16 |
| 532953 | VGUARD | 26-Jul-16 | 521097 | AMARJOTHI | 29-Jul-16 |
| 524129 | VINYLINDIA | 26-Jul-16 | 524663 | BIBCL | 29-Jul-16 |
| 505412 | WENDT | 26-Jul-16 | 535620 | BINNYMILLS | 29-Jul-16 |
| 505537 | ZEEL | 26-Jul-16 | 532974 | BIRLAMONEY | 29-Jul-16 |
| 500820 | ASIANPAINT | 27-Jul-16 | 511243 | CHOLAFIN | 29-Jul-16 |
| 500215 | ATFL | 27-Jul-16 | 517477 | ELNET | 29-Jul-16 |
| 532977 | BAJAJ-AUTO | 27-Jul-16 | 530333 | EMGEECA | 29-Jul-16 |
| 500490 | BAJAJHLDNG | 27-Jul-16 | 523754 | EPCIN | 29-Jul-16 |
| 500096 | DABUR | 27-Jul-16 | 532424 | GODREJCP | 29-Jul-16 |
| 500123 | ELANTAS | 27-Jul-16 | 530469 | GSLSEC | 29-Jul-16 |
| 508906 | EVERESTIND | 27-Jul-16 | 519552 | HERITGFOOD | 29-Jul-16 |
| 511676 | GICHSGFIN | 27-Jul-16 | 532174 | ICICIBANK | 29-Jul-16 |
| 500010 | HDFC | 27-Jul-16 | 532612 | INDOCO | 29-Jul-16 |
| 504741 | INDIANHUME | 27-Jul-16 | 500165 | KANSAINER | 29-Jul-16 |
| 502330 | IPAPP M | 27-Jul-16 | 502150 | KLYNCEM | 29-Jul-16 |
| 500730 | NOCIL | 27-Jul-16 | 532652 | KTKBANK | 29-Jul-16 |
| 500360 | RAPICUT | 27-Jul-16 | 539524 | LALPATHLAB | 29-Jul-16 |
| 526492 | RISHIROOP | 27-Jul-16 | 500510 | LT | 29-Jul-16 |
| 532983 | RPGLIFE | 27-Jul-16 | 500264 | MAFATIND | 29-Jul-16 |
| 526477 | SAENTER | 27-Jul-16 | 500262 | MAFATLAFIN | 29-Jul-16 |
| 502090 | SAGCEM | 27-Jul-16 | 530243 | MANGASOF | 29-Jul-16 |
| 511218 | SRTRANSFIN | 27-Jul-16 | 531049 | NEELKAN | 29-Jul-16 |
| 524542 | SUKHJITS | 27-Jul-16 | 500790 | NESTLEIND | 29-Jul-16 |
| 530401 | VINYOFL | 27-Jul-16 | 508941 | PANCARBON | 29-Jul-16 |
| 532648 | YESBANK | 27-Jul-16 | 511702 | PARSHINV | 29-Jul-16 |
| 500147 | CMIFPE | 28-Jul-16 | 519439 | PIONAGR | 29-Jul-16 |
| 590031 | DENORA | 28-Jul-16 | 539354 | POLYSPIN | 29-Jul-16 |
| 505200 | EICHERMOT | 28-Jul-16 | 532826 | RAJTV | 29-Jul-16 |
| 533477 | ENKEIWHEL | 28-Jul-16 | 512014 | SOBME | 29-Jul-16 |
| 505790 | FAGBEARING | 28-Jul-16 | 532872 | SPARC | 29-Jul-16 |
| 500139 | FEDDERLOYD | 28-Jul-16 | 501110 | SUNRINV | 29-Jul-16 |
| 500660 | GLAXO | 28-Jul-16 | 511333 | VLSFINANCE | 29-Jul-16 |
| 531600 | GOGIACAP | 28-Jul-16 | 531519 | ANKUSHFI | 30-Jul-16 |
| 517372 | GUJINTRX | 28-Jul-16 | 531458 | BOSTONBIO | 30-Jul-16 |
| 500185 | HCC | 28-Jul-16 | 531472 | CYBELEIND | 30-Jul-16 |
| 533192 | KCPSUGIND | 28-Jul-16 | 531270 | DAZZEL | 30-Jul-16 |
| 507598 | KLRF | 28-Jul-16 | 530705 | FLORATX | 30-Jul-16 |
| 517449 | MAGNAELQ | 28-Jul-16 | 524754 | GUJMEDI | 30-Jul-16 |

| | | | | | |
|--------|-------------|-----------|--------|------------|-----------|
| 504176 | HIGHENE | 30-Jul-16 | 532133 | IFGLREFRAC | 06-Aug-16 |
| 532041 | HINDBIO | 30-Jul-16 | 532865 | MEGH | 06-Aug-16 |
| 500220 | JASCH | 30-Jul-16 | 500456 | PASUPTAC | 06-Aug-16 |
| 512455 | LLOYDSME | 30-Jul-16 | 500825 | BRITANNIA | 08-Aug-16 |
| 531221 | MAYURFL | 30-Jul-16 | 500830 | COLPAL | 08-Aug-16 |
| 526831 | NAINAMS | 30-Jul-16 | 522261 | DOLPHINOFF | 08-Aug-16 |
| 533470 | RUSHIL | 30-Jul-16 | 511208 | IVC | 08-Aug-16 |
| 522152 | SOLIMAC | 30-Jul-16 | 590066 | KCP | 08-Aug-16 |
| 530565 | SSLFINANCE | 30-Jul-16 | 504258 | LAKSELEC | 08-Aug-16 |
| 513488 | SSWRL | 30-Jul-16 | 530759 | STERTOOLS | 08-Aug-16 |
| 531762 | UNJHAFOR | 30-Jul-16 | 506820 | ASTRAZEN | 09-Aug-16 |
| 524038 | VENLONENT | 30-Jul-16 | 500144 | FINCABLES | 09-Aug-16 |
| 516030 | YASHPPR | 30-Jul-16 | 531213 | MANAPPURAM | 09-Aug-16 |
| 511403 | SAIJEEV | 31-Jul-16 | 511632 | OLYMTFI | 09-Aug-16 |
| 532230 | BENGALT | 01-Aug-16 | 500338 | PRISMCEM | 09-Aug-16 |
| 500067 | BLUESTARCO | 01-Aug-16 | 505520 | ZHEMHOLD | 09-Aug-16 |
| 532744 | GTNTEX | 01-Aug-16 | 500085 | CHAMBLFERT | 10-Aug-16 |
| 505893 | HINDHARD | 01-Aug-16 | 500144 | FINCABLES | 10-Aug-16 |
| 514326 | PATSPINLTD | 01-Aug-16 | 503639 | INDSOYA | 10-Aug-16 |
| 531869 | SACHEMT | 01-Aug-16 | 538539 | JTAPARIA | 10-Aug-16 |
| 590072 | SUNDRMBRAK | 01-Aug-16 | 517344 | MINDTECK | 10-Aug-16 |
| 512527 | SUPER | 01-Aug-16 | 531500 | RAJESHEXPO | 10-Aug-16 |
| 511339 | APPLECREDIT | 02-Aug-16 | 538875 | SELLWIN | 10-Aug-16 |
| 539979 | DIGJAMLTD | 02-Aug-16 | 538975 | SHREESEC | 10-Aug-16 |
| 500840 | EIHOTEL | 02-Aug-16 | 500411 | THERMAX | 10-Aug-16 |
| 509631 | HEG | 02-Aug-16 | 522113 | TIMKEN | 10-Aug-16 |
| 500043 | BATAINDIA | 03-Aug-16 | 538464 | TPROJECT | 10-Aug-16 |
| 509480 | BERGEPAIN | 03-Aug-16 | 520113 | VESUVIUS | 10-Aug-16 |
| 513375 | CARBORUNIV | 03-Aug-16 | 530609 | CARNATIN | 11-Aug-16 |
| 531162 | EMAMILTD | 03-Aug-16 | 522064 | HONDAPOWER | 11-Aug-16 |
| 500133 | ESABINDIA | 03-Aug-16 | 500298 | NATPEROX | 11-Aug-16 |
| 531319 | MARUTISE | 03-Aug-16 | 505800 | RANEHOLDIN | 11-Aug-16 |
| 526109 | PRICOL | 03-Aug-16 | 505010 | AUTOAXLES | 12-Aug-16 |
| 500346 | PUNJCOMMU | 03-Aug-16 | 526925 | BOBSHELL | 12-Aug-16 |
| 500260 | RAMCOCEM | 03-Aug-16 | 523736 | DPL | 12-Aug-16 |
| 500414 | TIMEX | 03-Aug-16 | 538961 | GENUSPAPER | 12-Aug-16 |
| 532345 | GATI | 04-Aug-16 | 504840 | KAIRA | 12-Aug-16 |
| 506480 | GOCLCORP | 04-Aug-16 | 514456 | METROOV | 12-Aug-16 |
| 533217 | HMVL | 04-Aug-16 | 524558 | NEULANLAB | 12-Aug-16 |
| 505737 | INTLCOMBQ | 04-Aug-16 | 530125 | SAMRATPH | 12-Aug-16 |
| 500049 | BEL | 05-Aug-16 | 521222 | SANBLUE | 12-Aug-16 |
| 534804 | CARERATING | 05-Aug-16 | 530797 | SHGANEL | 12-Aug-16 |
| 532662 | HTMEDIA | 05-Aug-16 | 506655 | SUDARSCHEM | 12-Aug-16 |
| 523323 | KOVAI | 05-Aug-16 | 524378 | JMDEPACKR | 13-Aug-16 |
| 500252 | LAXMIMACH | 05-Aug-16 | 532166 | ALKASEC | 14-Aug-16 |
| 532529 | NDTV | 05-Aug-16 | 519191 | JOLYMER | 25-Aug-16 |
| 530555 | PARACABLES | 05-Aug-16 | | | |
| 532782 | SUTLEJTEX | 05-Aug-16 | | | |
| 507747 | TTKHEALTH | 05-Aug-16 | | | |

Economic Calendar

| Country | Monday 18th July 16 | Tuesday 19th July 16 | Wednesday 20th July 16 | Thursday 21th July 16 | Friday 22th July 16 |
|---------------------|--|--|---|---|--|
| US | Philly Fed Manufacturing Index ,Unemployment Claims ,HPI m/m, Flash Manufacturing PMI , Flash Services PMI , CB Leading Index m/m , Natural Gas Storage. | | Flash Manufacturing PMI , Flash Services PMI. | Core Durable Goods Orders m/m , Durable Goods Orders m/m , New Home Sales , S&P/CS Composite-20 HPI y/y , CB Consumer Confidence , New Home Sales . | HPI m/m , Existing Home Sales , Crude Oil Inventories . |
| UK/EURO ZONE | Current Account , Retail Sales m/m , Final CPI y/y , Final Core CPI y/y , ECB Monetary Policy Meeting Accounts . | German PPI m/m , Public Sector Net Borrowing . | French Flash Manufacturing PMI , French Flash Services PMI , Spanish Unemployment Rate , German Constitutional Court Ruling , German Flash Manufacturing PMI , German Flash Services PMI , Flash Manufacturing PMI, Flash Services PMI , Minimum Bid Rate , ECB | GfK Consumer Confidence . | German Final GDP q/q , CBI Realized Sales , Belgian NBB Business Climate . |
| INDIA | | | | | |



(Regn. No. : INP 00004011)

Narnolia Securities Ltd.

Narnolia Research Lab

Stellar IT Park | 5th Floor | Office Space No. 6 | Tower-IIInd Plot No. C-25 | Sector-62 | Noida | Ph : 0120-4215110

Narnolia Securities Ltd.

201 | 2nd Floor | Marble Arch Building | 236B -AJC Bose Road Kolkata-700 020 Ph : 033-40501500
Email : narnolia@narnolia.com website :www.narnolia.com