

SGX NIFTY : 8449.40 ( 56 Pt Down )

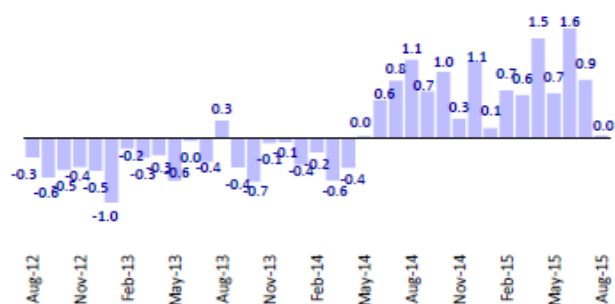
**Quote of the Day**

"An argument is made that there are just too many question marks about the near future; wouldn't it be better to wait until things clear up a bit?...face up to two unpleasant facts: The future is never clear [and] you pay a very high price for a cheery consensus. Uncertainty actually is the friend of the buyer of long term values."

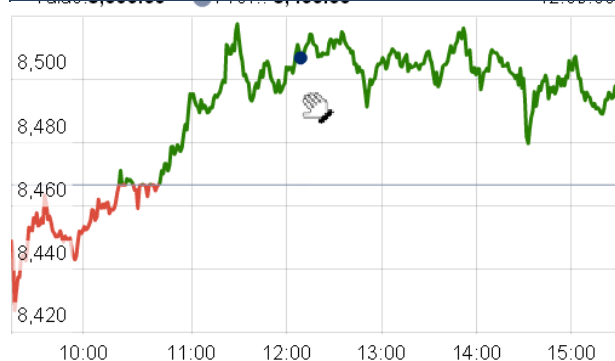
Warren Buffett

**Chart of the Day**

**DII trends**



**Index Action Nifty ( 19th Aug 15 )**



**Index**

Contents	Page	Coverage
News	2	Update
Economic Calendar	3	Update

**Market**

Name	Value	Change
Sensex	27,931.64	100.10
Nifty	8495.15	28.60
DOW	17,545.18	67.78
NASDAQ	5,019.05	(40.30)
CAC	4,884.10	(87.15)
DAX	10,682.15	(233.77)
FTSE	6,403.45	(122.84)
NIKKEI	20,124.88	(97.75)
HANG SENG	22,891.95	(27590.00)
EW ALL SHARE	14754.61	26.55

**Instituional Turnover**

**FII**

Investor	Buy(Cr.)	Sale(Cr.)	Net(Cr.)
19th Aug,15	3132.83	3556.55	(423.72)
Aug,15	51835.36	54268.36	(2433.00)
2015	773326.91	753608.70	19718.21

**DII**

Investor	Buy(Cr.)	Sale(Cr.)	Net(Cr.)
19th Aug,15	1743.89	1360.57	383.32
Aug,15	21793.32	19481.95	2311.37
2015	298581.56	270567.65	28013.91

**Commodity Price**

Commodity/Currencies	Value	
GOLD	261990.00	↑
SILVER	35527.00	↑
CRUDEOIL	42.31	↓
COPPER	328.10	↓
NATURALGAS	177.40	↓
DOLLAR/RS.	65.27	↓
EURO/RS.	72.52	↑
POUND/RS.	102.17	↑

## Market Snapshot

### Top Price Performers

Top Performers 1D	% Change	Top Performers 1W	% Change	Top Performers 1M	% Change
AURIONPRO	19.97	IMPEXFERRO	51.11	GMBREW	125.60
EVERONN	19.96	JUBLINDS	42.08	GREENFIRE	100.55
ENERGYDEV	19.94	VIKASGLOB	34.70	RUSHIL	92.33
VIKASGLOB	19.93	RAMCOIND	34.45	SANCIA	79.71
IMPEXFERRO	19.82	DSKULKARNI	34.30	ELECTHERM	63.91

### Worst Price Performers

Worst Performers 1D	% Change	Worst Performers 1W	% Change	Worst Performers 1M	% Change
AMTEKAUTO	(30.77)	JYOTISTRUC	(45.95)	AMTEKINDIA	(62.14)
PRIMEPRO	(10.50)	AMTEKAUTO	(41.22)	JYOTISTRUC	(51.31)
JCTEL	(10.00)	AHMEDFORGE	(30.93)	AMTEKAUTO	(47.54)
GEMINI	(9.86)	RESTILE	(26.61)	AHMEDFORGE	(41.33)
JYOTISTRUC	(9.72)	KSCL	(26.15)	WSI	(37.28)

## Top News

- Andhra Bank** plans to raise Rs 3,000 crore through various instruments including Qualified Institutional Placements as part of meeting its capital requirement . Company has planned to raise about Rs 700 crore in the form of QIP. That is only to strengthen our balance sheet . Another Rs 1,800 crore we will be raising as tier I and tier II (capital) and we will do that during the next six to seven months .
- Bank of Maharashtra** is looking to sell stressed assets worth Rs 500 crore in an auction in September. Bank is putting up loans worth Rs 500 crore for auctions in September. If that is successful then we might sell another Rs 1,000-1,500 crore bad loans to ARCs in the second half of the fiscal . Bank of Maharashtra will also e-auction 136 real estate assets held as collateral in September.
- JSW Steel** expects to invest about Rs 5,000 crore on various capital expenditure projects in this fiscal ending March 2016  
The company is closing down non operational subsidiaries in the UK and Kenya . The company is expected to invest approximately Rs 5,000 crore during FY16 on various capital expenditure programmes . At present, the firm has a capacity of 14.3 million tonnes (MT) across two integrated steel plants in Maharashtra and Karnataka.
- Sun Pharmaceutical Industries** has received approval from the US health regulator for its new drug application for acne treatment medicine--XiminoTM extended-release capsules in strengths of 45 mg, 90 mg and 135 mg
- U.S. consumer prices** increased by a seasonally adjusted 0.1% last month, below forecasts for a gain of 0.2% and following a rise of 0.3% in June.
- Central Statistical Office said that Polish Retail Sales** fell to a seasonally adjusted annual rate of 1.2%, from 3.8% in the preceding quarter. Analysts had expected Polish Retail Sales to fall to 2.9% in the last quarter.
- Polish PPI** fell to a seasonally adjusted -1.7%, from -1.6% in the preceding month. Analysts had expected Polish PPI to rise to -1.6% last month.
- South African CPI** rose to a seasonally adjusted annual rate of 1.0%, from 0.4% in the preceding quarter. Analysts had expected South African CPI to rise 1.0% in the last quarter.
- Japan's All Industries Activity Index** rose to a seasonally adjusted 0.3%, from -0.5% in the preceding month. Analysts had expected Japan's All Industries Activity Index to rise 0.4% last month.
- Japan trade balance** fell to a seasonally adjusted -0.37T, from -0.28T in the preceding month whose figure was revised down from -0.25T.
- KNR Constructions** bagged new orders worth Rs 2,600 crore in April and May. Total order book stands at Rs 3,600 crore, Reddy said adding that the orders have to be executed within two years. Advances from the orders will be used as working capital for the company . The company executed National Highway Authority of India (NHAI) projects worth Rs 700-800 crore. The company has bid for more NHAI projects in states like Uttarakhand, Punjab and Maharashtra
- Orient Green Power Company Ltd** said its Board has approved raising Rs 250 crore by issuing shares on a preferential basis. The existing promoter, SVL Ltd - formerly known as Shriram Industrial Holdings Ltd - and/or its subsidiaries will subscribe to shares equivalent to Rs 150 crore
- Bosch Ltd** said that it has commissioned a 12 MW solar power project for Cochin International Airport, which was inaugurated by Kerala Chief Minister Oommen Chandy. The project is the single largest solar project which has been constructed in an airport in India. It is spread over 50 acres. The project executed by Bosch Energy and Building Solutions (BEBS) team in India is estimated to generate approximately 50,000 units of electricity daily.

### Economic Calendar

Country	Monday 17th Aug 15	Tuesday 18th Aug 15	Wednesday 19th Aug 15	Thursday 20th Aug 15	Friday 21th Aug 15
US	NAHB Housing Market Index , Empire State Manufacturing Index	Building Permits ,Housing Starts .	CPI m/m , Core CPI m/m , Crude Oil Inventories , FOMC Meeting Minutes .	Unemployment Claims , Flash Manufacturing PMI , Philly Fed Manufacturing Index , Existing Home Sales , CB Leading Index m/m , Natural Gas Storage .	Flash Services PMI .
UK/EURO ZONE	Trade Balance , German Buba Monthly Report .	CPI y/y ,PPI Input m/m ,RPI y/y , Core CPI y/y , HPI y/y .	Current Account , Consumer Confidence ,	French Flash Manufacturing PMI ,French Flash Services PMI , German Flash Manufacturing PMI , German Flash Services PMI , Flash Manufacturing PMI , Flash Services PMI , Retail Sales m/m , Public Sector Net Borrowing .	
INDIA					



(Regn. No. : INP 000004011)

## Narnolia Securities Ltd.

#### Narnolia Research Lab

Stellar IT Park | 5th Floor | Office Space No. 6 | Tower-IIInd Plot No. C-25 | Sector-62 | Noida |  
Ph : 0120-4215110

#### Central Strategy Desk - Kolkata

124 | 1st Floor | 7/1 Lords Sinha Road | Kolkata - 71  
Ph : 033-22821500 | M : 93347 14418, 98302 69810