

SGX NIFTY : 8693 ( 35 Pt Up)

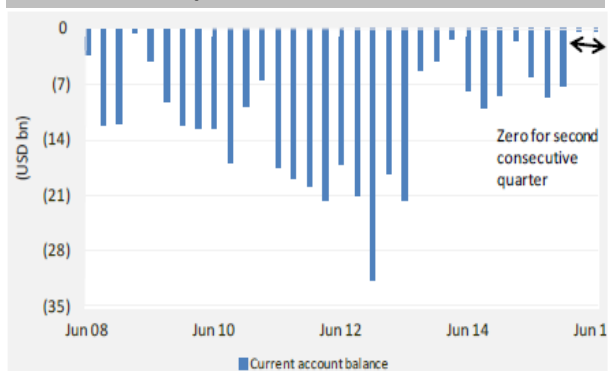
### Quote of the Day

"Some people seem to think there's no trouble just because it hasn't happened yet. If you jump out the window at the 42nd floor and you're still doing fine as you pass the 27th floor, that doesn't mean you don't have a serious problem. I would want to address the problem right now."

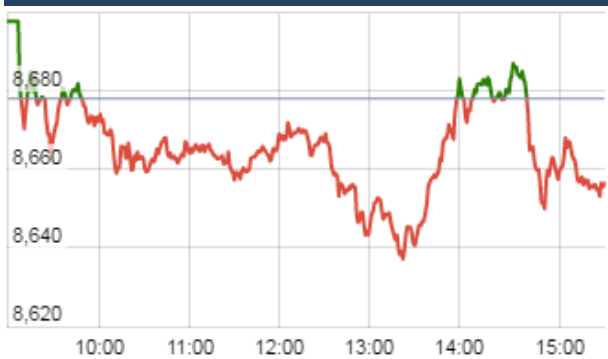
Charlie Munger

### Chart of the Day

#### Capital Account Balance



### Index Action Nifty ( 19th Oct 16 )



### Index

Contents	Page	Coverage
News	2	Update
Economic Calendar	3	Update

### Market

Name	Value	Change
Sensex	27,984.37	(66.51)
Nifty	8659.10	(18.80)
DOW	18,268.50	(12.53)
NASDAQ	5,246.11	2.57
CAC	4,520.30	11.39
DAX	10,645.68	14.13
FTSE	7,021.92	21.86
NIKKEI	17,186.97	188.06
HANG SENG	23,429.93	124.93
EW ALL SHARE	15685.91	(21.96)

### Instituional Turnover

#### FII

Investor	Buy(Cr.)	Sale(Cr.)	Net(Cr.)
19-Oct-16	4218.46	4501.23	(282.77)
Oct,16	3745.10	3710.88	34.22
2016	792213.32	767326.21	24887.11

#### DII

Investor	Buy(Cr.)	Sale(Cr.)	Net(Cr.)
19-Oct-16	2711.43	1986.79	724.64
Oct,16	2479.59	2281.57	198.02
2016	337624.94	338286.76	(661.82)

### Commodity Price

Commodity/Currencies	Value	
GOLD	29901.00	↑
SILVER	42194.00	↑
CRUDEOIL	49.21	↑
COPPER	312.05	↓
NATURALGAS	210.50	↓
DOLLAR/RS.	66.67	↓
EURO/RS.	73.14	↑
POUND/RS.	81.96	↑

## Market Snapshot

### Top Price Performers

Top Performers 1D	% Change	Top Performers 1W	% Change	Top Performers 1M	% Change
CALSREF	36.36	DIAPOWER	68.23	PRIMESECU	107.42
HINDDORROL	30.43	RAMCOIND	57.03	REMIMETAL	104.37
ZUARIGLOB	29.59	PARABDRUGS	52.15	GTINFRA	98.25
MANGCHEFER	29.15	CALSREF	50.00	CALSREF	87.50
RAMCOIND	27.91	HINDDORROL	42.75	JSL	83.30

Worst Performers 1D	% Change	Worst Performers 1W	% Change	Worst Performers 1M	% Change
XLENERGY	(12.14)	J&KBANK	(23.02)	MANDHANA	(74.87)
PATELENG	(11.41)	SUPREMETEX	(22.38)	ROLATAN	(42.17)
KGL	(10.44)	GITANJALI	(22.29)	KANANIIND	(31.78)
RAINBOWPAP	(9.67)	MAVENS BIO	(18.52)	LLOYDMETAL	(27.81)
SUPREMETEX	(9.60)	XLENERGY	(15.00)	BHARTISHIP	(25.98)

### Top News

#### • Havells Concall highlights 2QFY17:

- > Company is maintaining its double digit growth for full year but management is not sure that 2nd half will be better than 1st half.
- > EBITDA margin will be 13-14% for full year.
- > Capex for FY17 will be Rs 250-260 cr for Switchgear plant in Guwahati.
- > Company is giving lot of focus on R&D, manufacturing and distribution channel.
- > Industrial cable is having good demand.
- > Fan segment is growing good as per the management there will be double digit growth in this segment.
- > Ad spend will be 3% of sales.
- > Working capital days will decrease.
- > As per the management revenue of Switchgear, wire & cables and Fan will be close to Rs 360-370 Cr.
- > Tax rate will be 28%.

#### • Mgt Int : MASTEK

- >>Expect growth rates to pick
- >>Mgt seeing QoQW improvement over the next 3-4 quarters, in terms of topline and definitely it should translate to better bottom-line.
- >>Improvement in margins will be seen going forward.

• **Government** will sell 15 percent stake in state-owned construction company NBCC at a floor price of Rs 246.50 a share to raise about Rs 2,200 crore. The two-day offer for sale (OFS) will open for institutional investors and will be followed by retail sales. The floor price for the sale has been fixed at Rs 246.50 per share, a 2.6 percent discount to today's closing price of Rs 253

• **Suzlon Group** announced joint ventures with Canadian Solar and Unisun Energy for three solar projects in Telangana. The JV with Canadian Solar is for two solar projects of 15 MW each in Ramannapet and Kamareddy, while another 15-MW project will be set up in Adilabad district in partnership with Shanghai-based Unisun Energy Group.

• **Ashoka Buildcon** has received Letters of Intent (LOIs) from Dakshinanchal Vidyut Vitran Nigam for execution of work on Rural Electrification on Turnkey basis under DDUGJY Scheme a GOI Scheme on behalf of DVVNL/Government of Uttar Pradesh for Aligarh and Kanpur Zones. The aggregate accepted bid value of the Projects is Rs. 178.66 Crore.

• **NIIT** 's corporate learning vertical grew by 23 percent year-on-year in the second quarter of FY17, more than the company had guided for . NIIT does not expect similar kind of growth going ahead. FY17's corporate learning growth could better the 15 percent guidance given earlier by the management. Company maintains FY17 corporate learning operating margin guidance of 12 percent. Company expects debt to remain on a downward trend for the next two quarters.

• **Tata Motors** hikes passenger vehicle prices by up to Rs 12,000 . Tata Motors sells a range of passenger vehicles, including the entry-level small car Nano, newly-launched hatchback Tiago and crossover vehicle Aria, which were priced at a range of Rs 2.15 lakh to Rs 16.3 lakh.

• **Polish Industrial Output** fell to a seasonally adjusted 3.2%, from 7.5% in the preceding month. Analysts had expected Polish Industrial Output to fall to 3.5% last month.

• **South African Retail Sales** fell to 0.2%, from 1.2% in the preceding month whose figure was revised up from 0.8%. Analysts had expected South African Retail Sales to remain unchanged at 0.8% last month.

• **U.K. Unemployment Rate** remained unchanged at a seasonally adjusted 4.9%, from 4.9% in the preceding month. Analysts had expected U.K. Unemployment Rate to remain unchanged at 4.9% last month.

• **U.K. claimant count change** rose to a seasonally adjusted 0.7K, from 7.1K in the preceding month whose figure was revised up from 2.4K. Analysts had expected U.K. claimant count change to rise 3.0K last month.

**Result Calendar Q2FY17**

BSE Code	Company Name	Date	BSE Code	Company Name	Date
530431	ADORFO	20-Oct-16	500171	GHCL	21-Oct-16
522273	AHMDSTE	20-Oct-16	505255	GMM	21-Oct-16
539115	ALAN SCOTT	20-Oct-16	514370	HARPOLY	21-Oct-16
513729	AROGRANITE	20-Oct-16	535789	IBULHSGFIN	21-Oct-16
509438	BENARAS	20-Oct-16	500214	IONEXCHANG	21-Oct-16
532523	BIOCON	20-Oct-16	532642	JSWHL	21-Oct-16
533151	DBCORP	20-Oct-16	533302	KICL	21-Oct-16
533896	FERVENTSYN	20-Oct-16	533293	KIRLOSENG	21-Oct-16
500150	FOSECOIND	20-Oct-16	500235	KSL	21-Oct-16
538567	GULFOILLUB	20-Oct-16	539992	LLOYDSTEEL	21-Oct-16
524669	HESTERBIO	20-Oct-16	511000	MADHUSE	21-Oct-16
536868	INTELSOFT	20-Oct-16	523828	MENONBE	21-Oct-16
512405	IPOWER	20-Oct-16	532819	MINDTREE	21-Oct-16
524592	JDORGOCHEM	20-Oct-16	533273	OBEROIRLTY	21-Oct-16
500233	KAJARIACER	20-Oct-16	517536	ONWARDTEC	21-Oct-16
505283	KIRLPNU	20-Oct-16	531254	OPTIFIN	21-Oct-16
500253	LICHSGFIN	20-Oct-16	532988	RANEENGINE	21-Oct-16
500262	MAFATLAFIN	20-Oct-16	532983	RPGLIFE	21-Oct-16
531212	NALINLEA	20-Oct-16	501061	SBBJ	21-Oct-16
500730	NOCIL	20-Oct-16	503229	SIMPLXREA	21-Oct-16
531209	NUCLEUS	20-Oct-16	500472	SKFINDIA	21-Oct-16
538019	OBIL	20-Oct-16	513010	TATASPONGE	21-Oct-16
539347	PHL	20-Oct-16	521064	TRIDENT	21-Oct-16
522205	PRAJIND	20-Oct-16	505978	TRITONV	21-Oct-16
500325	RELIANCE	20-Oct-16	506690	UNICHEMLAB	21-Oct-16
517320	SAVINFOCO	20-Oct-16	532953	VGUARD	21-Oct-16
512589	SITAENT	20-Oct-16	507685	WIPRO	21-Oct-16
533121	SQSBFSI	20-Oct-16	533287	ZEELEARN	21-Oct-16
539268	SYNGENE	20-Oct-16	534742	ZUARI	21-Oct-16
532790	TANLA	20-Oct-16	500780	ZUARIGLOB	21-Oct-16
512297	WHELTEX	20-Oct-16	539662	BFLDEV	22-Oct-16
532648	YESBANK	20-Oct-16	539527	CREATIVE	22-Oct-16
532628	3IINFOTECH	21-Oct-16	532610	DWARKESH	22-Oct-16
500410	ACC	21-Oct-16	533315	INOVSYNTH	22-Oct-16
500710	AKZOINDIA	21-Oct-16	524330	JAYAGROGN	22-Oct-16
531581	ALKADIA	21-Oct-16	524731	JENBURPH	22-Oct-16
532259	APARINDS	21-Oct-16	522259	KALINDEE	22-Oct-16
522134	ARTSONEN	21-Oct-16	533519	L&TFH	22-Oct-16
500027	ATUL	21-Oct-16	517415	LEENEE	22-Oct-16
531310	AVAILFC	21-Oct-16	500250	LGBBROSLTD	22-Oct-16
530803	BHAGIL	21-Oct-16	533007	LGBFORGE	22-Oct-16
504648	BOMBWIR	21-Oct-16	539275	MSL	22-Oct-16
532792	CAIRN	21-Oct-16	533179	PERSISTENT	22-Oct-16
519477	CIANAGRO	21-Oct-16	526490	PRATIK	22-Oct-16
512018	CNIRESLTD	21-Oct-16	511640	SANGHCO	22-Oct-16
539844	EQUITAS	21-Oct-16	532900	SEINV	22-Oct-16
508906	EVERESTIND	21-Oct-16	531219	SHYAMAINFO	22-Oct-16

530445	SUMERUIND	22-Oct-16	524727	SPANDIAQ	24-Oct-16
526525	WWLEATH	22-Oct-16	533110	SPSL	24-Oct-16
516030	YASHPPR	22-Oct-16	500407	SWARAJENG	24-Oct-16
504356	ZMULTIPU	22-Oct-16	513434	TATAMETALI	24-Oct-16
532410	TRANSCOR	23-Oct-16	539871	THYROCARE	24-Oct-16
512599	ADANIENT	24-Oct-16	531390	UPSURGE	24-Oct-16
533096	ADANIPOWER	24-Oct-16	512205	VATSAEDU	24-Oct-16
539254	ADANITRANS	24-Oct-16	505412	WENDT	24-Oct-16
530117	ADIFINCHM	24-Oct-16	532921	ADANIPORTS	25-Oct-16
523120	ADORMUL	24-Oct-16	533573	APLLTD	25-Oct-16
517041	ADORWELD	24-Oct-16	500101	ARVIND	25-Oct-16
513349	AJMERA	24-Oct-16	500820	ASIANPAINT	25-Oct-16
532215	AXISBANK	24-Oct-16	522005	AUSTENG	25-Oct-16
530999	BALAMINES	24-Oct-16	522004	BATLIBOI	25-Oct-16
511501	BHARAT	24-Oct-16	503960	BBL	25-Oct-16
532974	BIRLAMONEY	24-Oct-16	532454	BHARTIARTL	25-Oct-16
511505	CAPITALT	24-Oct-16	512313	BIJLTEX	25-Oct-16
506365	CHEMOPH	24-Oct-16	538786	CIL	25-Oct-16
533167	COROENGG	24-Oct-16	539876	CROMPTON	25-Oct-16
532764	GEECEE	24-Oct-16	532099	DATABASE	25-Oct-16
526797	GREENPLY	24-Oct-16	532760	DEEPIND	25-Oct-16
500690	GSFC	24-Oct-16	532848	DELTACORP	25-Oct-16
517372	GUJINTRX	24-Oct-16	500124	DRREDDY	25-Oct-16
532822	IDEA	24-Oct-16	500123	ELANTAS	25-Oct-16
533047	IMFA	24-Oct-16	524768	EMMESSA	25-Oct-16
509162	INDAG	24-Oct-16	533477	ENKEIWHEL	25-Oct-16
534816	INFRATEL	24-Oct-16	500246	ENVAIREL	25-Oct-16
511609	ISLCONSUL	24-Oct-16	500469	FEDERALBNK	25-Oct-16
523398	JCHAC	24-Oct-16	526227	FILATEX	25-Oct-16
534659	JOINTECAED	24-Oct-16	538568	FRUTION	25-Oct-16
530701	KDJHRL	24-Oct-16	513108	GANDHITUBE	25-Oct-16
524019	KINGFA	24-Oct-16	532312	GEOMETRIC	25-Oct-16
500245	KIRLFER	24-Oct-16	500174	GLFL	25-Oct-16
532889	KPRMILL	24-Oct-16	505576	GOLDCORP	25-Oct-16
512455	LLOYDSME	24-Oct-16	532482	GRANULES	25-Oct-16
532756	MAHINDCIE	24-Oct-16	518029	GSCLCEMENT	25-Oct-16
531319	MARUTISE	24-Oct-16	500180	HDFCBANK	25-Oct-16
511766	MUTHTFN	24-Oct-16	532129	HEXAWARE	25-Oct-16
531289	NATFIT	24-Oct-16	540133	ICICIPRULI	25-Oct-16
532504	NAVINFLUOR	24-Oct-16	539437	IDFCBANK	25-Oct-16
500162	PARRYSUGAR	24-Oct-16	507438	IFBAGRO	25-Oct-16
537839	PHOENIXTN	24-Oct-16	504080	JSLINDL	25-Oct-16
500355	RALLIS	24-Oct-16	532926	JYOTHYLAB	25-Oct-16
500111	RELCAPITAL	24-Oct-16	523207	KOKUYOCLN	25-Oct-16
532661	RML	24-Oct-16	500247	KOTAKBANK	25-Oct-16
532785	RUCHIRA	24-Oct-16	511138	KOTHARIFIN	25-Oct-16
502175	SAURASHCEM	24-Oct-16	500249	KSBPUMPS	25-Oct-16
524336	SHHARICH	24-Oct-16	511728	KZLFIN	25-Oct-16
505827	SNL	24-Oct-16	532720	M&MFIN	25-Oct-16

515059	MADHUDIN	25-Oct-16	500086	EXIDEIND	26-Oct-16
500264	MAFATIND	25-Oct-16	502865	FORBESCO	26-Oct-16
534091	MCX	25-Oct-16	508486	HAWKINCOOK	26-Oct-16
532865	MEGH	25-Oct-16	500010	HDFC	26-Oct-16
532621	MORARJEE	25-Oct-16	500182	HEROMOTOCO	26-Oct-16
532440	MPSLTD	25-Oct-16	500189	HINDUJAVEN	26-Oct-16
532200	MYSOREBANK	25-Oct-16	500696	HINDUNILVR	26-Oct-16
539015	ORTEL	25-Oct-16	504741	INDIANHUME	26-Oct-16
523642	PIIND	25-Oct-16	532612	INDOCO	26-Oct-16
532254	POLARIS	25-Oct-16	532717	INDOTECH	26-Oct-16
531273	RADHEDE	25-Oct-16	504786	INVPRECQ	26-Oct-16
532987	RBL	25-Oct-16	502330	IPAPPM	26-Oct-16
512309	ROSETEX	25-Oct-16	500875	ITC	26-Oct-16
523025	SAFARIND	25-Oct-16	500380	JKLAKSHMI	26-Oct-16
531431	SHAKTIPUMP	25-Oct-16	533148	JSWENERGY	26-Oct-16
538685	SHEMAROO	25-Oct-16	533155	JUBLFOOD	26-Oct-16
511218	SRTRANSFIN	25-Oct-16	535648	JUSTDIAL	26-Oct-16
513517	STEELCAS	25-Oct-16	500241	KIRLOSROS	26-Oct-16
506003	SUDAI	25-Oct-16	500252	LAXMIMACH	26-Oct-16
517385	SYMPHONY	25-Oct-16	500266	MAHSCOOTER	26-Oct-16
501301	TATAINVEST	25-Oct-16	505324	MANUGRAPH	26-Oct-16
539488	TFL	25-Oct-16	503772	MODWOOL	26-Oct-16
504966	TINPLATE	25-Oct-16	520043	MUNJALSHOW	26-Oct-16
532410	TRANSCOR	25-Oct-16	530697	NEELKATEC	26-Oct-16
509055	VISAKAIND	25-Oct-16	502165	OCL	26-Oct-16
532893	VTMLTD	25-Oct-16	500314	ORIENTHOT	26-Oct-16
532144	WELCORP	25-Oct-16	532366	PNBGILTS	26-Oct-16
511601	YASHMGM	25-Oct-16	514223	RAMGOPOLY	26-Oct-16
505537	ZEEL	25-Oct-16	537840	RAUNAQEP	26-Oct-16
512587	ZODJRDMKJ	25-Oct-16	532915	RELIGARE	26-Oct-16
531335	ZYDUSWELL	25-Oct-16	532735	RSYSTEMINT	26-Oct-16
532331	AJANTPHARM	26-Oct-16	506642	SADHNANIQ	26-Oct-16
521097	AMARJOTHI	26-Oct-16	502090	SAGCEM	26-Oct-16
500012	ANDHRAPET	26-Oct-16	532191	SBT	26-Oct-16
526847	ASHSI	26-Oct-16	522034	SHANTIGEAR	26-Oct-16
532888	ASIANILES	26-Oct-16	531201	SHILCTECH	26-Oct-16
508933	AYMSYNTEX	26-Oct-16	532143	SKMEGGPROD	26-Oct-16
524663	BIBCL	26-Oct-16	532419	SMARTLINK	26-Oct-16
532290	BLBLIMITED	26-Oct-16	531548	SOMANYCERA	26-Oct-16
532321	CADILAH	26-Oct-16	531359	SRAMSET	26-Oct-16
532483	CANBK	26-Oct-16	512527	SUPER	26-Oct-16
506395	COROMANDEL	26-Oct-16	532276	SYNDIBANK	26-Oct-16
500480	CUMMINSIND	26-Oct-16	500420	TORNTPHARM	26-Oct-16
500096	DABUR	26-Oct-16	502281	TRIVENIGQ	26-Oct-16
533309	DALMIABHA	26-Oct-16	511371	VATCO	26-Oct-16
506401	DEEPAKNI	26-Oct-16	538382	WESTLEIRES	26-Oct-16
526783	DRAGARWQ	26-Oct-16	501386	ZSWASTSA	26-Oct-16
533208	EMAMIPAP	26-Oct-16	500002	ABB	27-Oct-16
532511	EXCELCROP	26-Oct-16	531161	ABMKNO	27-Oct-16

539056	ADLABS	27-Oct-16	532777	NAUKRI	27-Oct-16
537292	AGRITECH	27-Oct-16	504112	NELCO	27-Oct-16
509367	APTANN	27-Oct-16	504093	PANAENERG	27-Oct-16
532978	BAJAFINSV	27-Oct-16	501144	PEOPLIN	27-Oct-16
500034	BAJFINANCE	27-Oct-16	539354	POLYSPIN	27-Oct-16
526849	BANARBEADS	27-Oct-16	531870	POPULARES	27-Oct-16
500049	BEL	27-Oct-16	532934	PPAP	27-Oct-16
505688	BHARATGEAR	27-Oct-16	526109	PRICOL	27-Oct-16
500059	BINANIIND	27-Oct-16	532805	REDINGTON	27-Oct-16
500069	BNKCAP	27-Oct-16	520075	SAMKRG	27-Oct-16
533108	BTTL	27-Oct-16	526885	SARLAPOLY	27-Oct-16
500870	CASTROLIND	27-Oct-16	532663	SASKEN	27-Oct-16
511243	CHOLAFIN	27-Oct-16	507894	SCHABLON	27-Oct-16
531067	CONTILI	27-Oct-16	532498	SHRIRAMCIT	27-Oct-16
532173	CYBERTECH	27-Oct-16	514197	STCORP	27-Oct-16
500097	DALMIASUG	27-Oct-16	532374	STRTECH	27-Oct-16
590031	DENORA	27-Oct-16	509930	SUPREMEIND	27-Oct-16
531162	EMAMILTD	27-Oct-16	500408	TATAELXI	27-Oct-16
526574	ENTRINT	27-Oct-16	526576	TECHIN	27-Oct-16
523754	EPCIN	27-Oct-16	532755	TECHM	27-Oct-16
500033	FORCEMOT	27-Oct-16	505400	TEXINFRA	27-Oct-16
532809	FSL	27-Oct-16	533326	TEXRAIL	27-Oct-16
531375	GCCLINP	27-Oct-16	531652	THIRDFIN	27-Oct-16
500660	GLAXO	27-Oct-16	511559	TIMESGTY	27-Oct-16
532296	GLENMARK	27-Oct-16	532779	TORNTPOWER	27-Oct-16
511441	GUJCRED	27-Oct-16	506680	TRELCH-B	27-Oct-16
530141	GYANDEV	27-Oct-16	500251	TRENT	27-Oct-16
500185	HCC	27-Oct-16	532343	TVSMOTOR	27-Oct-16
500186	HINDOILEXP	27-Oct-16	539798	UMIYA	27-Oct-16
505726	IFBIND	27-Oct-16	532432	UNITDSPR	27-Oct-16
531314	INTCAPM	27-Oct-16	531762	UNJHAFOR	27-Oct-16
530965	IOC	27-Oct-16	531894	VATSAMUS	27-Oct-16
532162	JKPAPER	27-Oct-16	539118	VRLLOG	27-Oct-16
500228	JSWSTEEL	27-Oct-16	538268	WONDERLA	27-Oct-16
590003	KARURVYSYA	27-Oct-16	532794	ZEEMEDIA	27-Oct-16
532732	KKCL	27-Oct-16	509046	ZLEENCON	27-Oct-16
507598	KLRF	27-Oct-16	511359	ADMANUM	28-Oct-16
504258	LAKSELEC	27-Oct-16	505216	ALFREDHE	28-Oct-16
532313	MAHLIFE	27-Oct-16	506767	ALKYLAMINE	28-Oct-16
521018	MARALOVER	27-Oct-16	512091	ANSHNCO	28-Oct-16
532500	MARUTI	27-Oct-16	520119	ASAL	28-Oct-16
531727	MENNPIS	27-Oct-16	512247	ASHCAP	28-Oct-16
503015	MODERN	27-Oct-16	532977	BAJAJ-AUTO	28-Oct-16
509760	MODRNSH	27-Oct-16	500490	BAJAJHLDNG	28-Oct-16
532407	MOSCHIP	27-Oct-16	524687	BASANTGL	28-Oct-16
500290	MRF	27-Oct-16	533228	BHARATFIN	28-Oct-16
515037	MURUDCERA	27-Oct-16	513375	CARBORUNIV	28-Oct-16
537291	NATHBIOGEN	27-Oct-16	500040	CENTURYTEX	28-Oct-16
502407	NATHPULP	27-Oct-16	521210	CITYMAN	28-Oct-16

531210	COLINZ	28-Oct-16	530565	SSLFINANCE	29-Oct-16
500830	COLPAL	28-Oct-16	513488	SSWRL	29-Oct-16
500089	DICIND	28-Oct-16	532493	ASTRAMICRO	31-Oct-16
505200	EICHERMOT	28-Oct-16	530705	FLORATX	31-Oct-16
509525	EMPIND	28-Oct-16	530389	GEEFC	31-Oct-16
511676	GICHSGFIN	28-Oct-16	532041	HINDBIO	31-Oct-16
531600	GOGIACAP	28-Oct-16	538838	ICL	31-Oct-16
500300	GRASIM	28-Oct-16	530915	JRFOODS	31-Oct-16
507960	GUJHOTE	28-Oct-16	521248	KITEX	31-Oct-16
532659	IDFC	28-Oct-16	530441	MAHAN	31-Oct-16
500213	ITHL	28-Oct-16	511403	SAJEEV	31-Oct-16
523405	JMFINANCIL	28-Oct-16	538876	STSERV	31-Oct-16
500165	KANSAINER	28-Oct-16	531279	TRISHAKT	31-Oct-16
508993	KEDIACN	28-Oct-16	538873	WINYCOMM	31-Oct-16
502150	KLYNCEM	28-Oct-16	500280	CENTENKA	01-Nov-16
517463	LINAKS	28-Oct-16	540124	GNA	01-Nov-16
505320	LYNMC	28-Oct-16	533217	HMVL	01-Nov-16
533088	MHRIL	28-Oct-16	509966	VSTIND	01-Nov-16
500890	MODIRUBBER	28-Oct-16	590043	HARITASEAT	02-Nov-16
500452	NEPCAGRO	28-Oct-16	532662	HTMEDIA	02-Nov-16
500301	NEPCMICON	28-Oct-16	511208	IVC	02-Nov-16
531077	NEPCPAPER	28-Oct-16	526247	PREMEXPLQ	02-Nov-16
521192	NEPCTEX	28-Oct-16	532221	SONATSOFTW	02-Nov-16
500790	NESTLEIND	28-Oct-16	500403	SUNDRMFAST	02-Nov-16
508875	NITINALOY	28-Oct-16	532390	TAJGVK	02-Nov-16
516082	NRAGRINDQ	28-Oct-16	532513	TVSELECT	02-Nov-16
533399	PARAPRINT	28-Oct-16	500425	AMBUJACEM	03-Nov-16
511702	PARSHINV	28-Oct-16	509480	BERGEPAIN	03-Nov-16
519439	PIONAGR	28-Oct-16	531458	BOSTONBIO	03-Nov-16
532826	RAJTV	28-Oct-16	531270	DAZZEL	03-Nov-16
590051	SAKSOFT	28-Oct-16	500840	EIHOTEL	03-Nov-16
532872	SPARC	28-Oct-16	500133	ESABINDIA	03-Nov-16
501110	SUNRINV	28-Oct-16	532285	GEOJITBNPP	03-Nov-16
530677	SUPREME	28-Oct-16	506076	GRINDWELL	03-Nov-16
510245	SWASTIVI	28-Oct-16	524754	GUJMEDI	03-Nov-16
531003	SWRNASE	28-Oct-16	532835	ICRA	03-Nov-16
500429	UNIPHOS	28-Oct-16	539524	LALPATHLAB	03-Nov-16
521226	UNIROYAL	28-Oct-16	517449	MAGNAELQ	03-Nov-16
512070	UPL	28-Oct-16	522241	MMFL	03-Nov-16
532156	VAIBHAVGBL	28-Oct-16	526299	MPHASIS	03-Nov-16
500295	VEDL	28-Oct-16	532638	SHOPERSTOP	03-Nov-16
524038	VENLONENT	28-Oct-16	502180	SHREDIGCEM	03-Nov-16
530405	JINDCAP	29-Oct-16	520056	SUNCLAYLTD	03-Nov-16
532644	JKCEMENT	29-Oct-16	533553	TDPOWERSYS	03-Nov-16
530243	MANGASOF	29-Oct-16	517506	TTKPRESTIG	03-Nov-16
526831	NAINAMS	29-Oct-16	526125	ARHNTTO	04-Nov-16
521009	NIWASSP	29-Oct-16	534804	CARERATING	04-Nov-16
514460	OSWAYRN	29-Oct-16	523127	EIHAHOTELS	04-Nov-16
519230	RICHIRICH	29-Oct-16	516078	JUMBO	04-Nov-16

518011	KEERTHI	04-Nov-16	505700	ELECON	10-Nov-16
502958	LAKSHMIMIL	04-Nov-16	500144	FINCABLES	10-Nov-16
524558	NEULANLAB	04-Nov-16	531737	GREENCREST	10-Nov-16
532460	PONNIERODE	04-Nov-16	511543	GSBFIN	10-Nov-16
502450	SESHAPAPER	04-Nov-16	514386	GUJCOTEX	10-Nov-16
526161	SPENTA	04-Nov-16	526779	HINAFIL	10-Nov-16
532349	TCI	04-Nov-16	511092	JMDTELEFILM	10-Nov-16
500114	TITAN	04-Nov-16	505750	JOSTS	10-Nov-16
500008	AMARAJABAT	05-Nov-16	531213	MANAPPURAM	10-Nov-16
501455	GREAVESCOT	05-Nov-16	517334	MOTHERSUMI	10-Nov-16
522064	HONDAPOWER	05-Nov-16	514332	NEOINFRA	10-Nov-16
524699	KILBURN	05-Nov-16	500313	OILCOUNTUB	10-Nov-16
524709	NAGAAGRI	05-Nov-16	532503	RAJPALAYAM	10-Nov-16
504132	PERMAGN	05-Nov-16	505800	RANEHOLDIN	10-Nov-16
500825	BRITANNIA	07-Nov-16	511712	RELICTEC	10-Nov-16
514045	BSL	07-Nov-16	520151	SHREYAS	10-Nov-16
503681	ELCIDIN	07-Nov-16	526901	SONALAD	10-Nov-16
500141	FERROALL	07-Nov-16	500411	THERMAX	10-Nov-16
532424	GODREJCP	07-Nov-16	500414	TIMEX	10-Nov-16
532174	ICICIBANK	07-Nov-16	539123	VBIND	10-Nov-16
521234	SRINACHA	07-Nov-16	506820	ASTRAZEN	11-Nov-16
539353	SWARAJAUTO	07-Nov-16	512277	AUTOINT	11-Nov-16
501425	BBTC	08-Nov-16	531775	CISTRO	11-Nov-16
500020	BOMDYEING	08-Nov-16	539131	CLLIMITED	11-Nov-16
531608	GORANIN	08-Nov-16	530171	DAULAT	11-Nov-16
532851	INSECTICID	08-Nov-16	532180	DHANBANK	11-Nov-16
505737	INTLCOMBQ	08-Nov-16	531306	DHPIND	11-Nov-16
530443	KIRANSY-B	08-Nov-16	531237	DHRUVCA	11-Nov-16
500346	PUNJCOMMU	08-Nov-16	505790	FAGBEARING	11-Nov-16
505192	SMLISUZU	08-Nov-16	500202	INDLEASE	11-Nov-16
526827	SPICEISL	08-Nov-16	500211	INSILCO	11-Nov-16
524129	VINYLINDIA	08-Nov-16	504840	KAIRA	11-Nov-16
501370	WALCHPF	08-Nov-16	523323	KOVAI	11-Nov-16
532212	ARCHIES	09-Nov-16	539446	KRISHFAB	11-Nov-16
519174	ASHAI	09-Nov-16	500520	M&M	11-Nov-16
523708	EIMCOELECO	09-Nov-16	517344	MINDTECK	11-Nov-16
517477	ELNET	09-Nov-16	501343	MOTOGENFIN	11-Nov-16
531599	FDC	09-Nov-16	535514	PRIMECAPM	11-Nov-16
500257	LUPIN	09-Nov-16	506655	SUDARSCHEM	11-Nov-16
513496	MEWATZI	09-Nov-16	507747	TTKHEALTH	11-Nov-16
532097	MUKANDENGG	09-Nov-16	531831	UNISH	11-Nov-16
500260	RAMCOCEM	09-Nov-16	511690	WARNER	11-Nov-16
512153	SPECMKT	09-Nov-16	523411	ADCINDIA	12-Nov-16
524542	SUKHJITS	09-Nov-16	514440	BPTX	12-Nov-16
530795	SUNCITYSY	09-Nov-16	500085	CHAMBLFERT	12-Nov-16
500303	ABIRLANUVO	10-Nov-16	530859	COSBOARD	12-Nov-16
508939	BLCISER	10-Nov-16	531472	CYBELEIND	12-Nov-16
511742	CHOKSEC	10-Nov-16	532133	IFGLREFRAC	12-Nov-16
522261	DOLPHINOFF	10-Nov-16	531779	PADALPO	12-Nov-16



517296	PHOENIXLL	12-Nov-16	500164	GODREJIND	14-Nov-16
512099	PUNITCO	12-Nov-16	514360	GUPTCIN	14-Nov-16
533470	RUSHIL	12-Nov-16	524378	JMDEPACKR	14-Nov-16
526532	SFPIL	12-Nov-16	590066	KCP	14-Nov-16
533170	TAMBOLI	12-Nov-16	530125	SAMRATPH	14-Nov-16
534392	VSSL	12-Nov-16	523425	SUNRAJDI	14-Nov-16
532509	SUPRAJIT	13-Nov-16	532166	ALKASEC	15-Nov-16
523168	AYPLAMI	14-Nov-16	506943	JBCHEPHARM	18-Nov-16
517203	BEELE	14-Nov-16	535755	ABFRL	24-Nov-16
519500	BKV	14-Nov-16	522113	TIMKEN	28-Nov-16
532783	DAAWAT	14-Nov-16			

### Result Q2FY17

BSE CODE	NSE CODE	Sales Rs Cr	Sales YoY	Pat Rs Cr	PAT YoY
506285	BAYERCROP	1160	0.89	159	6.00
531410	GUJFOIL	1160	961.30	159	11104.23
500188	HINDZINC	3877	(0.80)	1918	(16.07)
532400	KPIT	831	2.00	56	(25.00)

### Economic Calendar

Country	Monday 17th Oct 16	Tuesday 18th Oct 16	Wednesday 19th Oct 16	Thursday 20th Oct 16	Friday 21th Oct 16
US	Empire State Manufacturing Index , Capacity Utilization Rate , Industrial Production m/m .	CPI m/m , Core CPI m/m , NAHB Housing Market Index , TIC Long-Term Purchases.	Building Permits ,Housing Starts , Crude Oil Inventories , Beige Book .	Philly Fed Manufacturing Index ,Unemployment Claims , Existing Home Sales.	Flash Manufacturing PMI , Flash Services PMI.
UK/EURO ZONE	Italian Trade Balance , Final CPI y/y , Final Core CPI y/y , German Buba Monthly Report .		Average Earnings Index 3m/y , Claimant Count Change , Unemployment Rate .	German PPI m/m ,Current Account , Public Sector Net Borrowing , Minimum Bid Rate , ECB Press Conference.	French Flash Manufacturing PMI , French Flash Services PMI , Spanish Unemployment Rate , German Constitutional Court Ruling , German Flash Manufacturing PMI , German Flash Services PMI , Flash Manufacturing PMI, Flash Services PMI .
INDIA	Balance of Trade				

**Risk Disclosure & Disclaimer :** This report/message is for the personal information of the authorized recipient and does not construe to be any investment, legal or taxation advice to you. Narnolia Securities Ltd. (Hereinafter referred as NSL) is not soliciting any action based upon it. This report/message is not for public distribution and has been furnished to you solely for your information and should not be reproduced or redistributed to any other person in any form. The report/message is based upon publicly available information, findings of our research wing "East wind" & information that we consider reliable, but we do not represent that it is accurate or complete and we do not provide any express or implied warranty of any kind, and also these are subject to change without notice. The recipients of this report should rely on their own investigations, should use their own judgment for taking any investment decisions keeping in mind that past performance is not necessarily a guide to future performance & that the the value of any investment or income are subject to market and other risks. Further it will be safe to assume that NSL and /or its Group or associate Companies, their Directors, affiliates and/or employees may have interests/ positions, financial or otherwise, individually or otherwise in the recommended/mentioned securities/mutual funds/ model funds and other investment products which may be added or disposed including & other mentioned in this report/message. NSL or any of its affiliates or employees shall not be in any way responsible for any loss or damage that may arise to any person from any action taken based on the above information or inadvertent error in the information contained in this report/message.



(Regn. No. : INP 000004011)

---

## **Narnolia Securities Ltd.**

### **Narnolia Research Lab**

Stellar IT Park | 5th Floor | Office Space No. 6 | Tower-IIInd Plot  
No. C-25 | Sector-62 | Noida | Ph : 0120-4215110

### **Central Strategy Desk - Kolkata**

201 | 2nd Floor | Marble Arch Building | 236B-AJC Bose Road  
Kolkata-700 020 , Ph : 033-40501500 |  
Email : [research@narnolia.com](mailto:research@narnolia.com) | [www.narnolia.com](http://www.narnolia.com)