

SGX NIFTY : 7842 ( 14 Pt Down )

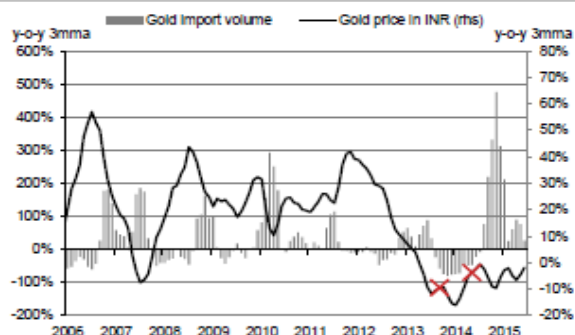
**Quote of the Day**

"There's a clarity that comes with great ideas: You can explain why something's a great business, how and why it's cheap, why it's cheap for temporary reasons and how, on a normal basis, it should be trading at a much higher level. You're never sitting there on the 40th page of your spreadsheet, as Buffett would say, agonizing over whether you should buy or not."

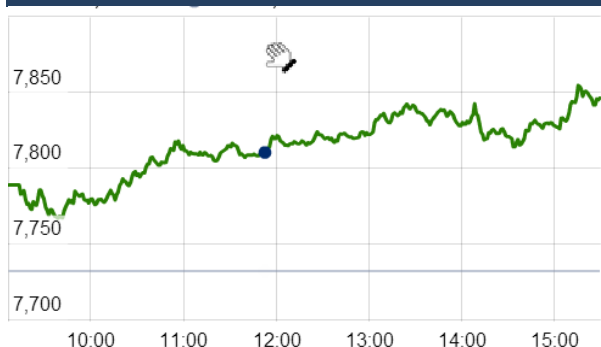
Joel Greenblatt

**Chart of the Day**

**Gold Import Trend**



**Index Action Nifty ( 20th Nov 15 )**



**Index**

Contents	Page	Coverage
News	2	Update
Economic Calendar	3	Update

**Market**

Name	Value	Change
Sensex	25,841.92	359.40
Nifty	7842.75	110.75
DOW	17,732.82	(4.34)
NASDAQ	5,073.64	(1.56)
CAC	4,915.06	8.38
DAX	11,058.44	125.49
FTSE	6,329.93	50.96
NIKKEI	19,755.98	(103.38)
HANG SENG	22,441.51	(58.68)
EW ALL SHARE	13676.29	120.35

**Instituional Turnover**

**FII**

Investor	Buy(Cr.)	Sale(Cr.)	Net(Cr.)
20-Nov-15	3486.83	3830.01	(343.18)
Nov,15	36562.28	42506.61	(5944.33)
2015	1010938.04	1021101.59	22501.62

**DII**

Investor	Buy(Cr.)	Sale(Cr.)	Net(Cr.)
20-Nov-15	1355.79	1121.97	233.82
Nov,15	16162.47	11975.65	(33.36)
2015	409750.98	356096.01	25669.18

**Commodity Price**

Commodity/Currencies	Value	
GOLD	25291.00	↑
SILVER	33830.00	↑
CRUDEOIL	41.38	↓
COPPER	303.46	↓
NATURALGAS	153.60	↓
DOLLAR/RS.	66.18	↑
EURO/RS.	70.80	↓
POUND/RS.	101.05	↑

## Market Snapshot

### Top Price Performers

Top Performers 1D	% Change	Top Performers 1W	% Change	Top Performers 1M	% Change
ANSALAPI	20.00	SHIVTEX	50.87	MAWANASUG	103.86
KINETICENG	19.98	UTTAMSUGAR	48.10	EDL	85.93
SHIVTEX	19.67	ESTER	46.68	UTTAMSUGAR	84.60
EON	18.66	MAWANASUG	43.89	MOREPENLAB	78.27
IOLCP	16.64	EDL	41.81	MANUGRAPH	69.84

Worst Performers 1D	% Change	Worst Performers 1W	% Change	Worst Performers 1M	% Change
JSL	(57.13)	JSL	(54.58)	SARLAPOLY	(90.19)
CALSREF	(12.50)	SUDAR	(27.06)	EROSMEDIA	(50.48)
BALRAMCHIN	(10.65)	COMFINTE	(23.93)	JSL	(49.95)
RENUKA	(9.99)	PLETHICO	(22.15)	SHILPAMED	(49.65)
RAJSREESUG	(9.99)	HELIOSMATH	(21.61)	HELIOSMATH	(46.53)

### Top News

- **Canara Bank** said it will raise an additional capital of Rs 2,400 crore by issuing bonds on private placement basis to support its asset growth. The decision to raise the additional capital was taken at Board meeting of the bank. The Board of the bank...has permitted to raise an additional capital of Rs 2,400 crore through issue of Basel-III compliant tier II bonds by way of private placement
- **Government** is considering raising import duty on aluminium products by as much as 5 percent, among other policy measures, to tackle the unabated import of cheap products that is adversely impacting the sector. Domestic aluminium industry is going through tough time. Some firms have approached Directorate General of Safeguards for a hike in safeguard duty. If it doesn't happen, we in our pre-budget consultation with Finance Ministry will propose for import duty hike
- **The Competition Commission of India (CCI)** gave a clean chit to Jindal Steel Private Limited (JSPL) on allegations of cartelisation saying it hasn't found enough evidence to support the same. The case pertains to the government's decision of cancelling the coal mine bids of JSPL and Balco for four blocks amid reports of speculation of cartelisation during auctions.
- **Ramco Systems and GAINSystems Inc** (global leader in supply chain management and supply chain optimisation) have entered into a strategic partnership to offer integrated solution to aviation industry. Ramco will embed GAINSystems' supply chain planning and inventory optimisation solution to aviation offering and offer it to both its new and existing customers of aviation series 5.
- **Punj Lloyd** has received two rural electrification contracts worth Rs 483 crore from NTPC for Puri and Koraput districts of Odisha under the Rajiv Gandhi Grameen Vidyutkaran Yojna of 12th plan. Scope of work includes supply and erection for rural electrification work for construction/augmentation of substations, installation of distribution transformers and providing service connections to BPL consumers around the district.
- India's sugar production rose by 33 percent to 7.61 lakh tonnes till November 15th in the current marketing year on higher output from Maharashtra. Sugar production in India, the world's second largest producer and biggest consumer, stood at 5.74 lakh tonnes in the same period of 2014-15 marketing year (October-September).
- **U.S. Natural Gas Storage** rose to a seasonally adjusted annual rate of 15B, from 49B in the preceding month. Analysts had expected U.S. Natural Gas Storage to rise 18B last month.
- **U.S. CB Leading Index** rose to a seasonally adjusted annual rate of 0.6%, from -0.1% in the preceding month whose figure was revised up from -0.2%. Analysts had expected U.S. CB Leading Index to rise 0.5% last month.
- **Canadian wholesale sales** fell to a seasonally adjusted -0.1%, from -0.1% in the preceding month. Canadian wholesale sales fell to a seasonally adjusted -0.1%, from -0.1% in the preceding month
- **Russian retail sales** fell to a seasonally adjusted annual rate of -11.7%, from -10.4% in the preceding month. Analysts had expected Russian retail sales to rise to -10.0% last month.
- **Brazilian Unemployment Rate** rose to a seasonally adjusted 7.9%, from 7.6% in the preceding month. Analysts had expected Brazilian Unemployment Rate to remain unchanged at 7.6% last month.
- **CBI industrial trends orders** rose to -11, from -18 in the preceding month. Analysts had expected CBI industrial trends orders to rise to -10 last month.
- **U.K. Office for National Statistics** said retail sales declined by a seasonally adjusted 0.6% last month, worse than forecasts for a decline of 0.5%. Retail sales in September rose by 1.7%, whose figure was revised from a previously reported gain of 1.9%.

### Economic Calendar

Country	Monday 16th Nov 15	Tuesday 17th Nov 15	Wednesday 18th Nov 15	Thursday 19th Nov 15	Friday 20th Nov 15
US	Empire State Manufacturing Index .	CPI m/m , Core CPI m/m , Capacity Utilization Rate , Industrial Production m/m .	FOMC Member Lockhart Speaks , Building Permits , Housing Starts , Crude Oil Inventories , FOMC Meeting Minutes	Unemployment Claims ,JOLTS Job Openings , Natural Gas Storage , 30-y Bond Auction , Federal Budget Balance .	Core Retail Sales m/m , PPI m/m , Retail Sales m/m , Core PPI m/m , Prelim UoM Consumer Sentiment ,
UK/EURO ZONE	ECB President Draghi Speaks , German Buba Monthly Report , Final CPI y/y .	CPI y/y , PPI Input m/m , RPI y/y , German ZEW Economic Sentiment , ZEW Economic Sentiment .	Average Earnings Index 3m/y , Claimant Count Change , Unemployment Rate , German 10-y Bond Auction , BOE Gov Carney Speaks ,	German Buba President Weidmann Speaks , Retail Sales m/m , ECB Monetary Policy Meeting Accounts .	German Prelim GDP q/q , French Prelim GDP q/q , French CPI m/m , Italian Prelim GDP q/q , Construction Output m/m , Flash GDP q/q , Trade Balance , CB Leading Index m/m .
INDIA					

### Narnolia Securities Ltd.

**Narnolia Research Lab**  
Stellar IT Park | 5th Floor | Office Space No. 6 | Tower-I/nd Plot No. C-25 | Sector-62 | Noida | Ph : 0120-4215110

**Central Strategy Desk - Kolkata**  
124 | 1st Floor | 7/1 Lords Sinha Road | Kolkata - 71  
Ph : 033-22821500 | M : 93347 14418, 98302 69810