

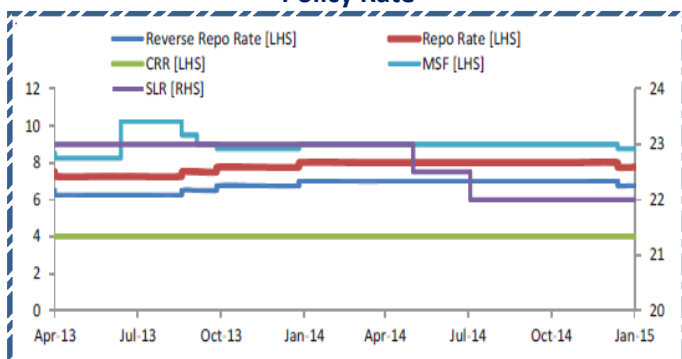
**Quote of the Day**

"When purchasing depressed stock in troubled companies, seek out the ones with the superior financial positions and avoid the ones with loads of bank debt." **Peter Lynch**

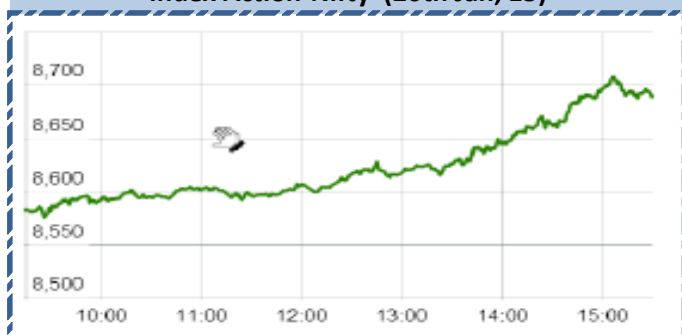
**SGX NIFTY : 8740**  
**( 31 pts Up)**

**Chart of the Day**

**Policy Rate**



**Index Action-Nifty (20th Jan, 15)**



MARKET		
Name	Value	Change
Sensex	28784.68	522.66
Nifty	8695.6	144.90
DOW	17515.23	3.66
NASDAQ	4654.85	20.47
CAC	4446.02	51.09
DAX	10257.13	14.78
FTSE	6620.1	34.57
NIKKIE	17227.29	(139.01)
HANG SENG	24031.77	80.61
EW ALL SHARE	14540.72	127.95

**INSTITUTIONAL TURNOVER**

FII			
Investor	Buy(Cr.)	Sale(Cr.)	Net(Cr.)
20th Jan	3695.66	3,261.94	433.72
Jan,15	55396.99	53,097.90	2299.09
2015	55396.99	53,097.90	2299.09
DII			
Investor	Buy(Cr.)	Sale(Cr.)	Net(Cr.)
20th Jan	1373.33	1,611.04	(237.71)
Jan,15	23393.19	53,097.90	(29704.71)
2015	23393.19	24,252.72	(859.53)

**COMMODITY PRICE**

COMMODITY/CURRENCIES	Value	
GOLD	28087.00	↑
SILVER	39570.00	↑
CRUDEOIL	46.86	↑
COPPER	355.80	↑
NATURALGAS	176.40	↓
DOLLAR/RS.	61.69	↓
EURO/RS.	71.27	↑
POUND/RS.	93.36	↑

**Index**

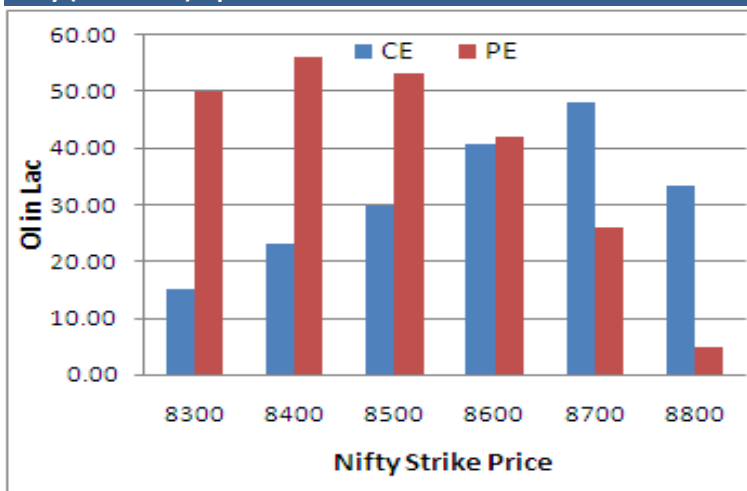
Contents	Page	Coverage
News	3	UPDATE
Result Calendar Q3FY15	4 to 10	UPDATE
Economic Calendar	11	UPDATE

**Narnolia Securities Ltd.**

**NIFTY SNAPSHOT**

Nifty Spot	8695.60(+144.90)
Nifty Jan 2014 Future	8712
Nifty Feb 2014 Future	8762
Nifty Jan 2014 Open Interest	21734600
Nifty Feb 2014 Open Interest	1423000
7 DMA of Spot Nifty	8450
21 DMA of Spot Nifty	8319
50 DMA of Spot Nifty	8358
VOLATILITY INDEX (VIX)	17.27(-0.38)
PUT CALL RATIO	1.09

**Nifty (Jan Series) Option OI Distribution:**



**Activity of Nifty (Jan Series) Strike**

Strike	CALL		PUT	
	OI	% Chng	OI	% Chng
8300	1504875	-35.18	4993050	-15.27
8400	2322075	-28.67	5606475	2.08
8500	2981850	-13.19	5338850	6.45
8600	4060350	-7.01	4203225	52.72
8700	4807275	5.41	2613975	71.07
8800	3338850	14.81	491600	39.68



**FII Activity (Fig in Cr)**

Segment	Buy	Sell	Net
INDEX FUTURE	3,895	2,146	1,749
INDEX OPTION	20,880	19,879	1,001
STOCK FUTURE	3,115	2,820	295
STOCK OPTION	2,454	2,528	(74)
<b>TOTAL</b>	<b>30,344</b>	<b>27,373</b>	<b>2,971</b>

**Fresh Long Seen In (Rising OI -Rising Price)**

Scrip	OI	OI ch%	CMP	Ch%
BPCL	43,89,000	10.3	648.5	0.5
INDIACEM	235,04,000	8.4	101.8	2.0
WIPRO	91,66,500	7.7	590.5	1.0
HINDUNILVR	90,81,500	6.6	895.7	0.3
ADANIPTS	73,21,000	6.5	330.6	0.6

**Fresh Shorts Seen In: (Rising OI -Falling Price)**

Scrip	OI	OI ch%	CMP	Ch%
HEROMOTOCO	17,53,875	11.1	2827.7	-0.5
JSWENERGY	343,56,000	5.8	109.9	-2.5
KTKBANK	236,40,000	5.3	152.7	-0.3
GAIL	50,94,500	4.3	432.1	-1.9
RECLTD	80,45,000	2.9	321.9	-2.1

**PCR (OI)**

STOCK	T1	T2
TATAMOTORS	1.05	0.73
AXISBANK	1.09	0.79
ITC	0.60	0.46
HDFC	1.14	0.91
SSLT	0.87	0.70

**PCR (OI)**

STOCK	T1	T2
POWERGRID	0.59	0.84
IBREALEST	0.32	0.40
HEROMOTOCO	0.24	0.30
KOTAKBANK	0.57	0.67
GLENMARK	0.25	0.29

## Markets Snapshot

### Top Price Performers

Top Performers 1D	% Change	Top Performers 1W	% Change	Top Performers 1M	% Change
SEINV	20.00	TAKE	64.05	NTCIND	180.88
CCCL	19.85	JMTAUTOLD	58.18	WEBELSOLAR	137.66
KESORAMIND	19.79	MIRZAIN	55.07	ERAINFRA	125.13
SHRIRAMEPC	17.30	INDLMETER	52.32	SUNDARAM	102.59
MLKFOOD	14.11	NCOPPER	50.86	INDOSOLAR	95.16

### Worst Price Performers

Worst Performers 1D	% Change	Worst Performers 1W	% Change	Worst Performers 1M	% Change
GLOBALCA	(19.97)	BLCISER	(22.36)	INFODRIVE	(89.03)
MBSWITCH	(12.15)	KSERASERA	(21.07)	OUTCTYTRVL	(69.18)
NCOPPER	(9.90)	JAYBARMARU	(17.44)	JMDTELEFILM	(54.22)
BLBLIMITED	(9.58)	CANDC	(16.86)	PRITI	(53.63)
BLUESTINFO	(8.51)	NET4	(16.84)	KSERASERA	(49.46)

### Top News :

- **Amtek Auto Mgt Guideline** : The direct exports for the company have gone up from Rs 500 crore to Rs 1000 crore in the 2014 and he expects them to jump considerably in 2015 too. He pegs the auto volume growth in Europe for 2015 to be in 2-4 percent range. Their recent acquisitions Neumayer Tekfor and Kuepper , Mgt says the turnaround seen in Neumayer was very encouraging and the company doubled its EBITDA . Going forward, Mgt expects its earnings to see a father rise as they build on the synergies. With regards to Kuepper, the company is halfway through first phase of restructuring .

- **Cyient Mgt Guideline** : Company is eyeing margins of around 16 percent going forward. The company was expecting to complete and bill in Q4 got pulled into Q3, aiding the margins quite significantly. The company is confident of continuing revenue growth of around 3-4 percent quarter-on-quarter. Cyient is hopeful that Rangsons Acquisition should add USD 70-80 million to revenue for FY16. Rangsons has 12 percent margins but Cyient is planning to dilute it by around 1 percent.

- **V-Guard Industries Mgt Guideline** : The company's sales growth in Q3 was lower than the company's internal estimates thereby resulting in under-absorption of fixed costs. Company is looking to target Rs 1800 crore revenue and 8% EBITDA margins for the fiscal year.

- **Reliance Capital News Clarification** : News regarding " "Reliance Cap eyes on Goldman India's MF unit", Reliance Capital clarified that the company is continuously engaged in evaluating opportunities and as and when any transaction is finalised resulting in a disclosable event, the Stock Exchanges will be promptly informed as required under Clause 36 of the Listing Agreement.

- **CRISIL** has revised upwards the credit rating of the Himatsingka Seide Ltd from CRISIL BBB+/Stable to CRISIL A-/Stable for Long Term Debt and Non Convertible Debentures. For Short Term debt, CRISIL has revised the rating upwards from CRISIL A2 to CRISIL A2+.

- **Tata Consultancy Services** has announced that it has been selected by Virgin Atlantic Airways (VAA) to provide fully managed services to transform and optimize its IT processes, applications and infrastructure. TCS will set up a private cloud for Virgin Atlantic and provide services including Infrastructure-as-a-Service, End User Services and Application Support Services across the whole of Virgin Atlantic's technology landscape

- **Suven Life Sciences** gets patents for neurodegenerative drug . The company said it has been granted one product patent from Australia, two product patents from Japan and one product patent from Hong Kong corresponding to the New Chemical Entity (NCE) for the treatment of disorders associated with Neurodegenerative diseases.

- **ZEW Centre for Economic Research** said that its index of German economic sentiment rose by 13.5 points to 48.4 this month from December's reading of 34.9. Analysts had expected the index to improve by 5.1 points to 40.0 in January.

- **National Bureau of Statistics of China** said that Chinese GDP remained unchanged at an annual rate of 7.3%, from 7.3% in the preceding month. Analysts had expected Chinese GDP to fall to 7.2% last month.

- **German Producer Price Inflation** fell to a seasonally adjusted annual rate of -0.7%, from 0.0% in the preceding month. Analysts had expected German Producer Price Inflation to fall -0.4% last month.

- **National Bureau of Statistics of China** said that Chinese Industrial Production rose to 7.9%, from 7.2% in the preceding month. Analysts had expected Chinese Industrial Production to rise to 7.4% last month.

## Result Calendar Q3FY15

Bse Coade	Company Name	Date	Bse Coade	Company Name	Date
531581	ALKADIA	21-Jan-15	519588	DFM	22-Jan-15
500012	ANDHRAPET	21-Jan-15	532839	DISHTV	22-Jan-15
522005	AUSTENG	21-Jan-15	500630	ESSARPORTS	22-Jan-15
500067	BLUESTARCO	21-Jan-15	500179	HCL-INSYS	22-Jan-15
532548	CENTURYPLY	21-Jan-15	502330	IPAPPM	22-Jan-15
504008	EMCO-\$	21-Jan-15	505283	KIRLPNU	22-Jan-15
508906	EVERESTIND	21-Jan-15	523704	MASTEK	22-Jan-15
524669	HESTERBIO	21-Jan-15	533088	MHRIL	22-Jan-15
507438	IFBAGRO	21-Jan-15	512065	MRUTR	22-Jan-15
531807	INGVYSYABK	21-Jan-15	533398	MUTHOOTFIN	22-Jan-15
500214	IONEXCHANG-\$	21-Jan-15	532200	MYSOREBANK	22-Jan-15
500875	ITC	21-Jan-15	508924	NORTHPR	22-Jan-15
590053	KARMOB-\$	21-Jan-15	535754	ORIENTCEM	22-Jan-15
532400	KPIT	21-Jan-15	500162	PARRYSUGAR	22-Jan-15
533519	L&TFH	21-Jan-15	532742	PAUSHAKLTD	22-Jan-15
531027	LIBORD	21-Jan-15	500143	PHCAP	22-Jan-15
511593	LIBORDFIN	21-Jan-15	506590	PHILIPCARB	22-Jan-15
512455	LLOYDSME	21-Jan-15	532254	POLARIS	22-Jan-15
530065	LORDSHOTL	21-Jan-15	533274	PRESTIGE	22-Jan-15
532654	MCLEODRUSS	21-Jan-15	532661	RML	22-Jan-15
523828	MENONBE-\$	21-Jan-15	502090	SAGCEM	22-Jan-15
512522	NEPTXP	21-Jan-15	507894	SCHABLON	22-Jan-15
531395	PADAMCO	21-Jan-15	538875	SELLWIN	22-Jan-15
508941	PANCARBON-\$	21-Jan-15	532725	SOLARINDS	22-Jan-15
511734	PASUFIN	21-Jan-15	531548	SOMANYCERA	22-Jan-15
532826	RAJTV	21-Jan-15	517166	SPELS	22-Jan-15
532988	RANEENGINE	21-Jan-15	533121	SQSBFSI	22-Jan-15
500330	RAYMOND	21-Jan-15	532374	STRTECH	22-Jan-15
531201	SHILCTECH	21-Jan-15	524542	SUKHJITS-\$	22-Jan-15
503811	SIYSIL	21-Jan-15	509930	SUPREMEIND	22-Jan-15
500405	SUPPETRO	21-Jan-15	512257	SVARTCORP	22-Jan-15
519604	SURFI	21-Jan-15	510245	SWASTIVI	22-Jan-15
500408	TATAELXSI	21-Jan-15	513434	TATAMETALI	22-Jan-15
512011	TEATIME	21-Jan-15	532262	TCIIND	22-Jan-15
532410	TRANSCOR	21-Jan-15	523301	TCPLPACK-\$	22-Jan-15
507747	TTKHEALTH	21-Jan-15	504966	TINPLATE	22-Jan-15
517506	TTKPRESTIG	21-Jan-15	512064	VISTR	22-Jan-15
514142	TTL-\$	21-Jan-15	534976	VMART	22-Jan-15
505537	ZEEL	21-Jan-15	509966	VSTIND	22-Jan-15
504988	ZWELCAST	21-Jan-15	511038	ZARCOLEA	22-Jan-15
522273	AHMDSTE	22-Jan-15	532794	ZEEMEDIA	22-Jan-15
506235	ALEMBICLTD	22-Jan-15	534742	ZUARI	22-Jan-15
526397	ALPHAGEO-\$	22-Jan-15	531161	ABMKNO	23-Jan-15
512247	ASHCAP	22-Jan-15	523411	ADCINDIA	23-Jan-15
512433	ASUTENT	22-Jan-15	532309	AIL	23-Jan-15
500215	ATFL	22-Jan-15	501622	AMALGAM	23-Jan-15
526849	BANARBEADS	22-Jan-15	527001	ASHAPURMIN	23-Jan-15
532523	BIOCON	22-Jan-15	500027	ATUL	23-Jan-15
532792	CAIRN	22-Jan-15	503960	BBL-\$	23-Jan-15
506401	DEEPAKNI	22-Jan-15	500049	BEL	23-Jan-15

500830	COLPAL	23-Jan-15	522004	BATLIBOI-\$	27-Jan-15
506395	COROMANDEL	23-Jan-15	512313	BIJLTEX	27-Jan-15
501148	DSINVEST	23-Jan-15	511505	CAPITALT	27-Jan-15
532922	EDELWEISS	23-Jan-15	500110	CHENNPETRO	27-Jan-15
523754	EPCIN	23-Jan-15	511243	CHOLAFIN	27-Jan-15
530929	EUROASIA	23-Jan-15	512445	DEVITRD	27-Jan-15
590065	IMPAL	23-Jan-15	533208	EMAMIPAP	27-Jan-15
501151	KARTKIN	23-Jan-15	531508	EVEREADY	27-Jan-15
506528	KELENRG	23-Jan-15	523113	FUTURSEC	27-Jan-15
507948	KEYCORP	23-Jan-15	500171	GHCL	27-Jan-15
532924	KOLTEPATIL	23-Jan-15	533150	GODREJPROP	27-Jan-15
526596	LIBERTSHOE	23-Jan-15	500690	GSFC	27-Jan-15
501471	MACK	23-Jan-15	505982	HINDUJAF0-\$	27-Jan-15
526642	MIRZAIN	23-Jan-15	532822	IDEA	27-Jan-15
503015	MODERN-\$	23-Jan-15	524622	ISTRNETWK	27-Jan-15
531096	MOUNTEVE	23-Jan-15	512329	JARITEX	27-Jan-15
532416	NEXTMEDIA	23-Jan-15	524731	JENBURPH	27-Jan-15
530175	ODYSSEY-\$	23-Jan-15	532652	KTKBANK	27-Jan-15
520021	OMAXAUTO	23-Jan-15	524103	LINEARPO	27-Jan-15
500314	ORIENTHOT	23-Jan-15	505320	LYNMC	27-Jan-15
500327	PILIND	23-Jan-15	532500	MARUTI	27-Jan-15
522257	RAJOOENG-\$	23-Jan-15	531209	NUCLEUS	27-Jan-15
532987	RBL	23-Jan-15	502165	OCL	27-Jan-15
532983	RPGLIFE	23-Jan-15	512115	ROSEMER	27-Jan-15
511640	SANGHCO	23-Jan-15	512309	ROSETEX	27-Jan-15
501267	SHRERAN	23-Jan-15	532841	SAHYADRI	27-Jan-15
523363	STERLINH	23-Jan-15	532143	SKMEGGPROD	27-Jan-15
506854	TANFACIND-\$	23-Jan-15	516108	STHINPA	27-Jan-15
501242	TCIFINANCE	23-Jan-15	532812	TFL	27-Jan-15
531846	TRINITYLEA	23-Jan-15	500114	TITAN	27-Jan-15
532538	ULTRACEMCO	23-Jan-15	532477	UNIONBANK	27-Jan-15
511736	USHDI	23-Jan-15	524200	VINATORGA	27-Jan-15
533023	WABCOINDIA	23-Jan-15	524129	VINYLINDIA	27-Jan-15
506194	ASL	24-Jan-15	532553	WELPROJ	27-Jan-15
531340	BERVINL	24-Jan-15	538538	WELSPUNENT	27-Jan-15
532210	CUB	24-Jan-15	505412	WENDT	27-Jan-15
532329	DANLAW-\$	24-Jan-15	512297	WHELTEX	27-Jan-15
532345	GATI	24-Jan-15	501270	ZCHANAIN	27-Jan-15
531531	HATSUN	24-Jan-15	523204	ABAN	28-Jan-15
500236	KANELIND	24-Jan-15	532921	ADANIPOWER	28-Jan-15
532741	KIL	24-Jan-15	533096	ADANIPORTS	28-Jan-15
533179	PERSISTENT	24-Jan-15	532331	AJANTPHARM	28-Jan-15
526095	RALEGRA	24-Jan-15	506767	ALKYLAMINE	28-Jan-15
532029	SINDHUTRAD	24-Jan-15	522275	ALSTOMT&D	28-Jan-15
531169	SKPSEC	24-Jan-15	531310	AVAILFC	28-Jan-15
511218	SRTRANSFIN	24-Jan-15	519105	AVTNPL	28-Jan-15
532301	TATACOFFEE	24-Jan-15	505688	BHARATGEAR	28-Jan-15
532432	UNITDSPR	24-Jan-15	532974	BIRLAMONEY-\$	28-Jan-15
532848	DELTACORP	26-Jan-15	533108	BTTL	28-Jan-15
505216	ALFREDHE	27-Jan-15	531556	CORALFINAC	28-Jan-15
500008	AMARAJABAT	27-Jan-15	526821	DAICHI-\$	28-Jan-15
513729	AROGRANITE-\$	27-Jan-15	500840	EIHOTEL	28-Jan-15

531162	EMAMILTD	28-Jan-15	517372	GUJINTRX-\$	29-Jan-15
500246	ENVAIREL	28-Jan-15	500185	HCC	29-Jan-15
500150	FOSECOIND	28-Jan-15	500010	HDFC	29-Jan-15
531600	GOGIACAP	28-Jan-15	523398	HITACHIHOME	29-Jan-15
532482	GRANULES	28-Jan-15	532835	ICRA	29-Jan-15
509546	GRAVISSHO	28-Jan-15	532659	IDFC	29-Jan-15
517354	HAVELLS	28-Jan-15	532150	INDRAMEDCO	29-Jan-15
523405	JMFINANCIL	28-Jan-15	511208	IVC	29-Jan-15
535648	JUSTDIAL	28-Jan-15	523592	JENSONICOL	29-Jan-15
532926	JYOTHYLAB	28-Jan-15	590003	KARURVYSYA	29-Jan-15
513509	KALYANIFRG	28-Jan-15	500245	KIRLFER	29-Jan-15
526179	LUDLOWJUT	28-Jan-15	523207	KOKUYOCLN	29-Jan-15
521018	MARALOVER	28-Jan-15	523323	KOVAI	29-Jan-15
531319	MARUTISE	28-Jan-15	530139	KREONFIN	29-Jan-15
504882	NATIONSTD	28-Jan-15	507912	LKPFIN	29-Jan-15
500730	NOCIL	28-Jan-15	533259	MICROSEC	29-Jan-15
532481	NOIDATOLL	28-Jan-15	516062	NATPLY	29-Jan-15
500331	PIDILITIND	28-Jan-15	500313	OILCOUNTUB	29-Jan-15
590055	POLYSPIN	28-Jan-15	532366	PNBGILTS	29-Jan-15
512481	POLYTEX	28-Jan-15	520111	RATNAMANI	29-Jan-15
512461	PUNCTRD	28-Jan-15	531539	RISHDIGA-\$	29-Jan-15
500359	RANBAXY	28-Jan-15	532699	ROHLTD	29-Jan-15
532923	RJL	28-Jan-15	531324	ROSELABS	29-Jan-15
501154	ROSEI	28-Jan-15	509423	SEL	29-Jan-15
501061	SBBJ	28-Jan-15	532498	SHRIRAMCIT	29-Jan-15
521194	SILINV	28-Jan-15	533228	SKSMICRO	29-Jan-15
502742	SINTEX	28-Jan-15	505827	SNL	29-Jan-15
538635	SNOWMAN	28-Jan-15	500295	SSLT	29-Jan-15
500420	TORNTPHARM	28-Jan-15	530883	SUCROSA	29-Jan-15
532144	WELCORP	28-Jan-15	500407	SWARAJENG	29-Jan-15
533252	WELINV	28-Jan-15	532390	TAJGVK	29-Jan-15
505583	WWTECHHOL	28-Jan-15	521228	TATIAGLOB	29-Jan-15
500710	AKZOINDIA	29-Jan-15	532349	TCI	29-Jan-15
500477	ASHOKLEY	29-Jan-15	533393	TCIDEVELOP	29-Jan-15
526187	ASHRAM	29-Jan-15	531652	THIRDFIN	29-Jan-15
500820	ASIANPAINT	29-Jan-15	511559	TIMESGTY	29-Jan-15
513375	CARBORUNIV	29-Jan-15	500414	TIMEX-\$	29-Jan-15
521210	CITYMAN	29-Jan-15	524717	TITANBIO	29-Jan-15
533309	DALMIABHA	29-Jan-15	530045	TITANSEC	29-Jan-15
500124	DRREDDY	29-Jan-15	500251	TRENT	29-Jan-15
500133	ESABINDIA	29-Jan-15	532371	TTML	29-Jan-15
500135	ESSELPRO	29-Jan-15	512117	TWIROST	29-Jan-15
506803	FULFORD	29-Jan-15	532156	VAIBHAVGBL	29-Jan-15
513108	GANDHITUBE-\$	29-Jan-15	512511	VARUNME	29-Jan-15
531953	GCCL	29-Jan-15	501370	WALCHPF	29-Jan-15
531375	GCCLINP	29-Jan-15	511601	YASHMGM	29-Jan-15
532622	GDL	29-Jan-15	512587	ZODJRD MKJ	29-Jan-15
530855	GDLLEAS	29-Jan-15	503893	ZSATYASL	29-Jan-15
531399	GGAUTO	29-Jan-15	524348	AARTIDRUGS	30-Jan-15
531360	GOLECHA	29-Jan-15	512599	ADANIENT	30-Jan-15
506076	GRINDWELL	29-Jan-15	521097	AMARJOTHI	30-Jan-15
511441	GUJCREC	29-Jan-15	532418	ANDHRABANK	30-Jan-15

533271	ASHOKA	30-Jan-15	502150	KLYNCEM	30-Jan-15
532134	BANKBARODA	30-Jan-15	511138	KOTHARIFIN	30-Jan-15
524687	BASANTGL-\$	30-Jan-15	513605	LANCO INDUST	30-Jan-15
509480	BERGEPAIN	30-Jan-15	500250	LGBBROSLTD	30-Jan-15
511698	BHAGYFN	30-Jan-15	533007	LGBFORGE	30-Jan-15
524723	BIJHANS	30-Jan-15	517449	MAGNAELQ-\$	30-Jan-15
500059	BINANIIND	30-Jan-15	532313	MAHLIFE	30-Jan-15
535620	BINNYMILLS	30-Jan-15	506919	MAKERSL-\$	30-Jan-15
500069	BNKCAP	30-Jan-15	526891	MKTCREAT	30-Jan-15
526925	BOBSHELL	30-Jan-15	509196	MMRUBBR-B	30-Jan-15
517544	CENTUM	30-Jan-15	509760	MODRNSH	30-Jan-15
500147	CMIFPE-\$	30-Jan-15	524084	MONSANTO	30-Jan-15
504340	CONFINT	30-Jan-15	531049	NEELKAN	30-Jan-15
506935	CONTCHM	30-Jan-15	500452	NEPCAGRO	30-Jan-15
531067	CONTILI	30-Jan-15	500301	NEPCMICON	30-Jan-15
526269	CRSTCHM	30-Jan-15	531077	NEPCPAPER	30-Jan-15
500096	DABUR	30-Jan-15	521192	NEPCTEX	30-Jan-15
500097	DALMIASUG	30-Jan-15	524558	NEULANLAB	30-Jan-15
526285	DIVYAJYQ	30-Jan-15	523209	NICCOUCO	30-Jan-15
532927	ECLERX	30-Jan-15	512103	NIDHGRN	30-Jan-15
503681	ELCIDIN	30-Jan-15	521009	NIWASSP	30-Jan-15
504387	ELFTRDG	30-Jan-15	514460	OSWAYRN	30-Jan-15
517477	ELNET-\$	30-Jan-15	530555	PARACABLES-\$	30-Jan-15
532178	ENGINEERSIN	30-Jan-15	511702	PARSHINV	30-Jan-15
526574	ENTRINT	30-Jan-15	531802	PRERINFRA	30-Jan-15
514060	EVERTEX	30-Jan-15	512217	PRISMMEDI	30-Jan-15
500650	EXCELINDUS	30-Jan-15	532689	PVR	30-Jan-15
531754	FINCOM	30-Jan-15	530253	RAJTUBE	30-Jan-15
505714	GABRIEL	30-Jan-15	530271	RICHUNV	30-Jan-15
502856	GNDHISP	30-Jan-15	504365	RIDHISYN	30-Jan-15
500670	GNFC	30-Jan-15	530917	RRSECUR	30-Jan-15
513343	GRANDFONRY	30-Jan-15	523025	SAFARIND	30-Jan-15
532015	GRAVITY-\$	30-Jan-15	511403	SAIJEEV	30-Jan-15
530469	GSLSEC	30-Jan-15	515043	SAINTGOBAIN	30-Jan-15
530141	GYANDEV	30-Jan-15	531893	SAWABUSI	30-Jan-15
532281	HCLTECH	30-Jan-15	532638	SHOPERSTOP	30-Jan-15
519552	HERITGFOOD	30-Jan-15	503696	SHRENTI	30-Jan-15
500189	HINDUJAVEN	30-Jan-15	523790	SHUKJEW	30-Jan-15
532174	ICICIBANK	30-Jan-15	531219	SHYAMAINFO	30-Jan-15
532100	INDOCITY-\$	30-Jan-15	530439	SIDDHA	30-Jan-15
532612	INDOCO	30-Jan-15	500550	SIEMENS	30-Jan-15
505358	INTEGRAEN	30-Jan-15	531506	SKRABUL	30-Jan-15
538835	INTELLECT	30-Jan-15	512014	SOBME	30-Jan-15
506161	ISHWATR	30-Jan-15	532872	SPARC	30-Jan-15
509715	JAYSHREETEA	30-Jan-15	514442	SRIKPRIND	30-Jan-15
524592	JDORGOCHEM	30-Jan-15	590071	SUNDARMFIN	30-Jan-15
500228	JSWSTEEL	30-Jan-15	501110	SUNRINV	30-Jan-15
500165	KANSAINER	30-Jan-15	532733	SUNTV	30-Jan-15
505890	KENNAMET	30-Jan-15	511447	SYLPH	30-Jan-15
531692	KHYATI	30-Jan-15	500800	TATAGLOBAL	30-Jan-15
532352	KIRLMU	30-Jan-15	532755	TECHM	30-Jan-15
500241	KIRLOSBROS	30-Jan-15	500411	THERMAX	30-Jan-15

517407	TOYAMAQ-\$	30-Jan-15	532527	RKFORGE	31-Jan-15
530783	TRANSASIA	30-Jan-15	532191	SBT	31-Jan-15
504273	TUMUSEL	30-Jan-15	531745	SGLOBEX	31-Jan-15
511096	TVOLCON	30-Jan-15	519397	SHINDL	31-Jan-15
531650	VAXHS	30-Jan-15	522152	SOLIMAC	31-Jan-15
524038	VENLONENT	30-Jan-15	524667	SOTL	31-Jan-15
530401	VINYOFL	30-Jan-15	513488	SSWRL	31-Jan-15
500238	WHIRLPOOL	30-Jan-15	526231	STDSFAC	31-Jan-15
590013	XPROINDIA	30-Jan-15	538876	STSERV	31-Jan-15
512345	YASTF	30-Jan-15	505685	TAPARIA	31-Jan-15
533287	ZEELEARN	30-Jan-15	526576	TECHIN	31-Jan-15
509046	ZLEENCON	30-Jan-15	524204	TEEAI	31-Jan-15
537292	AGRITECH	31-Jan-15	531814	TIRSARJ	31-Jan-15
512008	AMANITRA	31-Jan-15	532779	TORNTPOWER	31-Jan-15
531519	ANKUSHFI	31-Jan-15	531279	TRISHAKT	31-Jan-15
526125	ARHNTTO	31-Jan-15	524408	UNIVSTAR	31-Jan-15
532493	ASTRAMICRO	31-Jan-15	531762	UNJHAFOR	31-Jan-15
512038	ASWTR	31-Jan-15	538873	WINYCOMM	31-Jan-15
502216	BOMBPOT	31-Jan-15	520119	ASAL	02-Feb-15
531203	BRANDREAL	31-Jan-15	506285	BAYERCROP	02-Feb-15
507486	CAPRO	31-Jan-15	511742	CHOKSEC	02-Feb-15
530789	CEEJAY	31-Jan-15	523708	EIMCOELECO	02-Feb-15
538786	CIL	31-Jan-15	511676	GICHSGFIN	02-Feb-15
531210	COLINZ	31-Jan-15	522289	IFMIMPX	02-Feb-15
521216	DHANROTO	31-Jan-15	532054	KDDL-\$	02-Feb-15
503796	DIGJAM	31-Jan-15	500252	LAXMIMACH	02-Feb-15
531533	ECOM	31-Jan-15	532915	RELIGARE	02-Feb-15
500086	EXIDEIND	31-Jan-15	535322	REPCOHOME	02-Feb-15
530705	FLORATX	31-Jan-15	509845	RJSHAH	02-Feb-15
531608	GORANIN	31-Jan-15	522034	SHANTIGEAR	02-Feb-15
500300	GRASIM	31-Jan-15	517168	SUBROS	02-Feb-15
538838	ICL	31-Jan-15	512527	SUPER-\$	02-Feb-15
531672	INANISEC	31-Jan-15	526755	VELHO	02-Feb-15
505212	JAINEX	31-Jan-15	514470	WINSOMTX-\$	02-Feb-15
530405	JINDCAP	31-Jan-15	532368	YBRANTDIGI	02-Feb-15
530915	JRFOODS	31-Jan-15	500410	ACC	03-Feb-15
514448	JYOTIRES	31-Jan-15	500825	BRITANNIA	03-Feb-15
533297	KBIL	31-Jan-15	500645	DEEPAKFERT	03-Feb-15
508993	KEDIACN	31-Jan-15	505700	ELECON	03-Feb-15
500243	KIRLOSIND	31-Jan-15	530835	ELTROL	03-Feb-15
532732	KKCL	31-Jan-15	500676	GSKCONS	03-Feb-15
530243	MANGASOF	31-Jan-15	500182	HEROMOTOCO	03-Feb-15
531221	MAYURFL	31-Jan-15	531968	IITLPROJ	03-Feb-15
526251	MIDEASTP	31-Jan-15	533047	IMFA	03-Feb-15
505594	MULTIIN	31-Jan-15	504741	INDIANHUME	03-Feb-15
515037	MURUDCERA	31-Jan-15	500257	LUPIN	03-Feb-15
537291	NATHBIOGEN	31-Jan-15	531528	MAARSFTW	03-Feb-15
531272	NIKKIGL	31-Jan-15	531213	MANAPPURAM	03-Feb-15
508875	NITINALOY	31-Jan-15	532641	NDL	03-Feb-15
530669	PRESOFI	31-Jan-15	506532	NITTAGELA-\$	03-Feb-15
526009	PROCAL	31-Jan-15	502420	ORIENTPPR	03-Feb-15
520073	RAUNAAQU	31-Jan-15	532810	PFC	03-Feb-15



532461	PNB	03-Feb-15	500877	APOLLOTYRE	06-Feb-15
500387	SHREECEM	03-Feb-15	531179	ARMANFIN	06-Feb-15
526877	SIDDHEGA	03-Feb-15	532382	BALAJITELE	06-Feb-15
505650	SKYLMILAR	03-Feb-15	532834	CAMLINFIN	06-Feb-15
590072	SUNDRMBRAK	03-Feb-15	500085	CHAMBLFERT	06-Feb-15
534369	TBZ	03-Feb-15	590084	KANCOENT	06-Feb-15
522113	TIMKEN	03-Feb-15	521242	KANDAGIRI-\$	06-Feb-15
506687	TRANSPEK-\$	03-Feb-15	517344	MINDTECK	06-Feb-15
532343	TVSMOTOR	03-Feb-15	532460	PONNIERODE	06-Feb-15
530889	ALKA	04-Feb-15	531412	RADIXIND	06-Feb-15
532047	ASIANFILMS	04-Feb-15	521240	SAMBANDAM-\$	06-Feb-15
532454	BHARTIARTL	04-Feb-15	503804	SHRIDINE-\$	06-Feb-15
500020	BOMDYEING	04-Feb-15	505192	SMLISUZU	06-Feb-15
532885	CENTRALBK	04-Feb-15	508963	STRLGUA	06-Feb-15
500040	CENTURYTEX	04-Feb-15	500770	TATACHEM	06-Feb-15
521056	CHESLINTEX	04-Feb-15	500470	TATASTEEL	06-Feb-15
522261	DOLPHINOFF-\$	04-Feb-15	530199	THEMISMED	06-Feb-15
533248	GPPL	04-Feb-15	530803	BHAGERIA	07-Feb-15
508486	HAWKINCOOK	04-Feb-15	530307	CHAMANSEQ-\$	07-Feb-15
501295	IITL	04-Feb-15	531599	FDC	07-Feb-15
512237	JAICORPLTD	04-Feb-15	517300	GIPCL	07-Feb-15
506943	JBCHEPHARM	04-Feb-15	500500	HINDMOTORS	07-Feb-15
507779	KANPRPLA	04-Feb-15	532644	JKCEMENT	07-Feb-15
524000	MAGMA	04-Feb-15	521127	KHTRFIB	07-Feb-15
506261	MODISNME-\$	04-Feb-15	526947	LAOPALA	07-Feb-15
523630	NFL	04-Feb-15	533470	RUSHIL	07-Feb-15
500672	NOVARTIND	04-Feb-15	502450	SESHAPAPER	07-Feb-15
506579	ORIENTCQ-\$	04-Feb-15	516030	YASHPPR-\$	07-Feb-15
533168	ROSSELLIND	04-Feb-15	522108	YUKEN-\$	07-Feb-15
511654	SUGALDAM	04-Feb-15	530233	AUROLAB	09-Feb-15
520056	SUNCLAYLTD	04-Feb-15	531278	AXISCAP	09-Feb-15
500403	SUNDRMFAST	04-Feb-15	523248	MACPLASQ-\$	09-Feb-15
500400	TATAPOWER	04-Feb-15	500307	NIRLON	09-Feb-15
533158	THANGAMAYL	04-Feb-15	504879	ORIENTABRA-\$	09-Feb-15
500231	UMANGDAIR	04-Feb-15	504093	PANAENERG-\$	09-Feb-15
519224	WILLAMAGOR	04-Feb-15	531944	SERVOTEC	09-Feb-15
519214	WILLIMFI	04-Feb-15	506222	STYABS	09-Feb-15
513117	AMFORG	05-Feb-15	522267	VJLAXMIE-\$	09-Feb-15
531878	ANJANIFIN	05-Feb-15	500002	ABB	10-Feb-15
530429	ASHISHPO	05-Feb-15	526331	ADVMULT	10-Feb-15
530885	AURUMSOFT	05-Feb-15	506947	ADVPETR-B	10-Feb-15
531719	BHAGCHEM	05-Feb-15	534804	CARERATING	10-Feb-15
532173	CYBERTECH	05-Feb-15	504671	CHASBRT	10-Feb-15
532424	GODREJCP	05-Feb-15	523736	DPL	10-Feb-15
526797	GREENPLY	05-Feb-15	513059	GSAUTO	10-Feb-15
507598	KLRF	05-Feb-15	536868	INTELSOFT	10-Feb-15
504258	LAKSELEC	05-Feb-15	517334	MOTHERSUMI	10-Feb-15
524709	NAGAAGRI	05-Feb-15	526721	NICCOPAR-\$	10-Feb-15
535755	PFRL	05-Feb-15	538860	PANAFIC	10-Feb-15
500338	PRISMCEM	05-Feb-15	526801	PSL	10-Feb-15
500260	RAMCOCEM	05-Feb-15	512099	PUNITCO	10-Feb-15
532369	RAMCOIND	05-Feb-15	517496	RICOHQ	10-Feb-15
532513	TVSELECT	05-Feb-15	530073	SANGHVIMOV	10-Feb-15
530973	ALFAICA	06-Feb-15	530035	SANTOSHF	10-Feb-15

511185	SURYAKR	10-Feb-15	512213	CLASELE	13-Feb-15
531091	UNITDCR	10-Feb-15	530859	COSBOARD	13-Feb-15
500780	ZUARIGLOB	10-Feb-15	505678	CPECLTD	13-Feb-15
526851	AREXMIS	11-Feb-15	530171	DAULAT	13-Feb-15
519174	ASHAI	11-Feb-15	535486	DELTALTD	13-Feb-15
506820	ASTRAZEN	11-Feb-15	531252	FARRYIND	13-Feb-15
500043	BATAINDIA	11-Feb-15	534757	FOCUSIRL	13-Feb-15
520131	COARO	11-Feb-15	531196	GAGANPO	13-Feb-15
531237	DHRUVCA	11-Feb-15	521176	GANGOTRI	13-Feb-15
500164	GODREJIND	11-Feb-15	531479	GLOBAL	13-Feb-15
502958	LAKSHMIMIL-₹	11-Feb-15	531737	GREENCREST	13-Feb-15
530557	NCLRESE	11-Feb-15	511543	GSBFIN	13-Feb-15
520151	SHREYAS	11-Feb-15	531918	HINDAPL	13-Feb-15
512153	SPECMKT	11-Feb-15	517044	IDM	13-Feb-15
509038	VOLLF	11-Feb-15	500202	INDLEASE	13-Feb-15
531223	ANJANI-₹	12-Feb-15	504840	KAIRA	13-Feb-15
530799	ANNAINFRA	12-Feb-15	504269	KHAITANELE	13-Feb-15
500031	BAJAJELEC	12-Feb-15	523652	KPLASTIK	13-Feb-15
508939	BLCISER	12-Feb-15	530421	KUWERIN	13-Feb-15
530839	CLIOINFO	12-Feb-15	531288	LEADFIN	13-Feb-15
530779	DYNAMICP	12-Feb-15	506113	LIFELINE	13-Feb-15
531463	GBLINFRA	12-Feb-15	532537	LUMAXAUTO	13-Feb-15
505250	GGDANDE	12-Feb-15	500520	M&M	13-Feb-15
507815	GILLETTE	12-Feb-15	514456	METROOV	13-Feb-15
526931	HRYNSHP-₹	12-Feb-15	532164	MINOLTAF	13-Feb-15
532001	INDCTST	12-Feb-15	501343	MOTOGENFIN	13-Feb-15
538422	JACKSON	12-Feb-15	526299	MPHISIS	13-Feb-15
526558	JAMEHOT	12-Feb-15	534184	NAGAROIL	13-Feb-15
511092	JMDTELEFILM	12-Feb-15	514332	NEOINFRA	13-Feb-15
530201	KALLAM-₹	12-Feb-15	511714	NIMBSPROJ	13-Feb-15
535730	KHOOBURAT	12-Feb-15	514324	OMNITEX	13-Feb-15
531689	MAHAREM	12-Feb-15	535514	PRIMECAPM	13-Feb-15
530897	NGIND-₹	12-Feb-15	515127	RAMMA	13-Feb-15
511632	OLYMTFI	12-Feb-15	531583	RAP	13-Feb-15
535658	PAWANSUT	12-Feb-15	531033	REGAL	13-Feb-15
500459	PGHH	12-Feb-15	507952	SHIKHARLETR	13-Feb-15
526043	POLYCHMP	12-Feb-15	506655	SUDARSHEM	13-Feb-15
523236	SHRENUJ	12-Feb-15	531411	TUNITEX	13-Feb-15
526901	SONALAD	12-Feb-15	531831	UNISH	13-Feb-15
526161	SPENTA	12-Feb-15	511690	WARNER	13-Feb-15
526827	SPICEISL-₹	12-Feb-15	509910	ZSOUTGAS	13-Feb-15
500399	STEELCO	12-Feb-15	531047	ADVPOWER	14-Feb-15
532035	UNISTRMU	12-Feb-15	531900	CCLINTER	14-Feb-15
526941	VAICC	12-Feb-15	533144	COX&KINGS	14-Feb-15
526775	VALIANT-₹	12-Feb-15	526073	GALXBRG	14-Feb-15
515099	VERTICLIND	12-Feb-15	532133	IFGLREFRAC	14-Feb-15
511122	1STCUS	13-Feb-15	526409	KALPENA	14-Feb-15
521174	ARORAFIB	13-Feb-15	517467	MARSONS	14-Feb-15
517203	BEELE	13-Feb-15	509040	NETLINK	14-Feb-15
519500	BKV	13-Feb-15	530125	SAMRATPH-₹	14-Feb-15
532324	CINEVISTA	13-Feb-15	524703	SANDUPHQ	14-Feb-15

526532	SFPIL	14-Feb-15	500425	AMBUJACEM	18-Feb-15
512221	TARCF	14-Feb-15	500166	GOODRICKE	28-Feb-15

### Consensus Estimate Q3FY15

BSE Code	NSE Code	Sales ( Cr.)	Sales Growth(%)	PAT( Cr.)	PAT Growth (%)
500049	BEL	1409.7	198.40	197.7	17.30
532538	ULTRACEMCO	5713.2	997.10	411.9	19.40
500830	COLPAL	1021	183.90	137.5	15.50
500696	HINDUNILVR	8111.8	1411.50	1058.8	12.30
500875	ITC	9774.1	3772.80	2802.5	12.00
532432	MCDOWELL-N	2437.9	243.80	108.5	7.00
532523	BIOCON	768.7	178.30	107.8	9.80
532839	DISHTV	713.6	181.20	-0.2	14.40
505537	ZEEL	1239.7	398.20	293.4	4.30
500188	HINDZINC	4078.4	2234.10	2366	18.20
506395	COROMANDEL	3067.6	248.50	124.9	11.30
532777	NAUKRI	154.2	51.30	51.4	25.00
532792	CAIRN	3223	1952.40	1433.2	(35.50)
533274	PRESTIGE	630.5	167.10	103.2	46.50
532400	KPIT	768.4	109.60	67.1	13.40
532819	MINDTREE	916.4	184.50	142.5	15.90
533179	PERSISTENT	495.8	117.60	74.8	14.60
531807	INGVYSYABK	512.3	338.20	185	23.10
500247	KOTAKBANK	1076.7	743.60	459.4	18.00
535789	IBULHSGFIN	572.3	602.30	457.7	(1.30)
511218	SRTRANSFIN	1042.6	789.60	336.3	11.90

### Economic Calendar

	Monday 19-Jan-15	Tuesday 20-Jan-15	Wednesday 21-Jan-15	Thursday 22-Jan-15	Friday 23-Jan-15
US		Flash Manufacturing PMI , NAHB Housing Market Index .	Building Permits , Crude Oil Inventories .	Unemployment Claims , Flash Services PMI , Natural Gas Storage .	Existing Home Sales .CB Leading Index m/m .
UK/EURO ZONE	German Buba Monthly Report .	German Buba Monthly Report , French Flash Manufacturing PMI , French Flash Services PMI , German Flash Manufacturing PMI , German Flash Services PMI , Flash Manufacturing PMI , German ZEW Economic Sentiment , ZEW Economic Sentiment .	Average Earnings Index 3m/y , Claimant Count Change , MPC Official Bank Rate Votes , MPC Asset Purchase Facility Votes , Unemployment Rate .	Spanish Unemployment Rate , Public Sector Net Borrowing , CBI Realized Sales , Minimum Bid Rate , ECB Press Conference .	Retail Sales m/m .
INDIA					



## Narnolia Securities Ltd

124, 1st floor 7/ 1, Lords Sinha Road Kolkata 700071, Ph 033-22821251 Toll Free no : 1-800-345-4000

email: [research@narnolia.com](mailto:research@narnolia.com),

website : [www.narnolia.com](http://www.narnolia.com)

**Risk Disclosure & Disclaimer:** This report/message is for the personal information of the authorized recipient and does not construe to be any investment, legal or taxation advice to you. Narnolia Securities Ltd. (Hereinafter referred as NSL) is not soliciting any action based upon it. This report/message is not for public distribution and has been furnished to you solely for your information and should not be reproduced or redistributed to any other person in any form. The report/message is based upon publicly available information, findings of our research wing "East wind" & information that we consider reliable, but we do not represent that it is accurate or complete and we do not provide any express or implied warranty of any kind, and also these are subject to change without notice. The recipients of this report should rely on their own investigations, should use their own judgment for taking any investment decisions keeping in mind that past performance is not necessarily a guide to future performance & that the the value of any investment or income are subject to market and other risks. Further it will be safe to assume that NSL and /or its Group or associate Companies, their Directors, affiliates and/or employees may have interests/ positions, financial or otherwise, individually or otherwise in the recommended/mentioned securities/mutual funds/ model funds and other investment products which may be added or disposed including & other mentioned in this report/message.