

SGX NIFTY : 8461 (5 Pt Down)

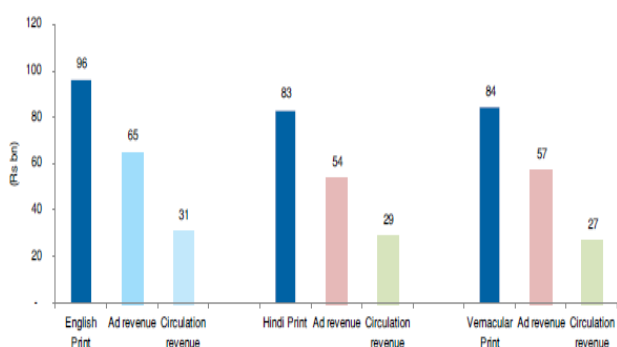
Quote of the Day

"Abnormally good or abnormally bad conditions do not last forever. This is true not only of general business but of particular industries as well. Corrective forces are often set in motion which tend to restore profits where they have disappeared, or to reduce them where they are excessive in relation to capital."

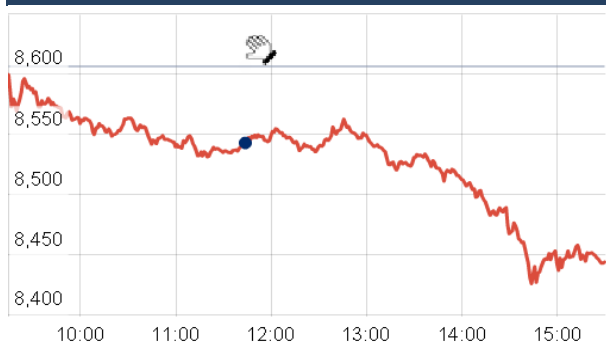
Benjamin Graham

Chart of the Day

Print Media Market Mix



Index Action Nifty (20th Apr 15)



Index

| Contents | Page | Coverage |
|------------------------|--------|----------|
| News | 2 | Update |
| Economic Calendar | 4 | Update |
| Result Calendar Q4FY15 | 3 to 4 | Update |

Market

| Name | Value | Change |
|--------------|-----------|----------|
| Sensex | 27,886.21 | (555.89) |
| Nifty | 8448.1 | (157.90) |
| DOW | 18,036.70 | 59.66 |
| NASDAQ | 4,994.60 | 62.79 |
| CAC | 5,187.59 | 44.33 |
| DAX | 11,891.91 | 203.21 |
| FTSE | 7,052.13 | 57.50 |
| NIKKIE | 19,792.18 | 157.69 |
| HANG SENG | 27,441.00 | 346.70 |
| EW ALL SHARE | 14492.99 | (271.01) |

Instituional Turnover

FII

| Investor | Buy(Cr.) | Sale(Cr.) | Net(Cr.) |
|-------------|-----------|-----------|-----------|
| 20th Apr,15 | 5954.52 | 7461.38 | (1506.86) |
| Apr,15 | 52321.33 | 52825.17 | (503.84) |
| 2015 | 369328.76 | 345899.99 | 23428.77 |

DII

| Investor | Buy(Cr.) | Sale(Cr.) | Net(Cr.) |
|--------------|-----------|-----------|-----------|
| 20th Apr ,15 | 2328.19 | 1365.69 | 962.50 |
| Apr,15 | 19381.40 | 17486.56 | 1894.84 |
| 2015 | 134357.72 | 138437.57 | (4079.85) |

Commodity Price

| Commodity/Currencies | Value | Change |
|----------------------|----------|--------|
| GOLD | 26849.00 | ↑ |
| SILVER | 36069.00 | ↓ |
| CRUDEOIL | 57.63 | ↑ |
| COPPER | 381.10 | ↓ |
| NATURALGAS | 161.30 | ↓ |
| DOLLAR/RS. | 62.91 | ↑ |
| EURO/RS. | 67.69 | ↓ |
| POUND/RS. | 93.93 | ↓ |

Market Snapshot

Top Price Performers

| Top Performers 1D | % Change | Top Performers 1W | % Change | Top Performers 1M | % Change |
|-------------------|----------|-------------------|----------|-------------------|----------|
| IOLCP | 19.90 | PRAKASHCON | 68.91 | AANJANEYA | 128.04 |
| ROHLTD | 19.36 | AANJANEYA | 39.80 | ESSDEE | 86.79 |
| MANJEERA | 16.69 | MOREPENLAB | 30.54 | TRICOM | 82.35 |
| CLNINDIA | 13.83 | BALAMINES | 29.57 | GEMINI | 78.67 |
| ARIHANT | 12.46 | RAIREKMOH | 28.03 | AMTEKINDIA | 77.94 |

Worst Price Performers

| Worst Performers 1D | % Change | Worst Performers 1W | % Change | Worst Performers 1M | % Change |
|---------------------|----------|---------------------|----------|---------------------|----------|
| SINCLAIR | (16.86) | SINCLAIR | (22.29) | PRITI | (51.63) |
| ONELIFECAP | (13.75) | ARVINDREM | (22.46) | GLODYNE | (46.06) |
| SHREEKRPOL | (13.04) | RSSOFTWARE | (22.94) | SHLAKSHMI | (39.08) |
| LPDC | (11.95) | SHREEKRPOL | (25.93) | SAMTEL | (37.76) |
| SATRAPROP | (11.88) | MAVENS BIO | (28.24) | KGNENT | (35.10) |

Top News

- Just Dial Mgt Guideline** : Company has no competition in its core business of search, which continues to grow at 25-30 percent annually . Company is planning to spend around Rs 100 crore on advertisements this year and will spend 4-5 percent of annual revenues on ads from next year . company's new offering, Search Plus (a master app which combines Just Dial's search services with transaction-based) will be launched in the first or second week of May.
- LICHSGFIN Mgt Guideline** : The net interest margins (NIMs) in the quarter stood at 2.47 percent as against 2.40 percent in the corresponding period last year. Bank is hopeful of maintaining margins at current levels, she said. Bank had also decided on reducing its borrowings and were careful of borrowings from NCD market . The bank borrowings came down from 25 percent to 16 percent and the cost of funds came down by 50 basis points in FY15 . The retail loan category had grown by 20 percent and the project category had grown by 10 percent. The bank had seen reduction in non-performing loans in both corporate and retail portfolios
- Bajaj Auto Mgt Guideline** : Company is confident of his company's sales growing at over 20 percent in the current financial year and has been setting up a second production facility in Chakan, the initial capacity of new Chakan plant is seen at 50,000 units per month. Company expects the monthly average (for domestic motorcycle sales) at 2 lakh units, while that of three-wheelers at 2.60 lakh units. Company sees exports at around 1.4-1.5 lakh units in April and 1.7-1.8 lakh (units) in May. Mgt expects the total exports for FY16 at 20 lakh units as against 18 lakh units on a year-on-year basis.
- Claris Lifesciences** has reached a settlement and license agreement, ending all pending litigation with Fresenius Kabi USA Inc, with reference to the alleged infringement of a patent relating to Propofol for injection, 10 mg/ml,
- The government** is likely to reconsider levying Minimum Alternate Tax (MAT) at the time of Real Estate Investment Trust (REIT) creation.
- JSW Steel** said its crude steel production grew 4 per cent to 12.63 million tonnes (MT) for the 2014-15 fiscal. The company produced 12.17 MT of crude steel in 2013-14 . The company also recorded 12 per cent growth in its long product segment at 2.06 MT for the year under review
- The Securities and Exchange Board of India (Sebi)** has moved the Supreme Court, challenging a tribunal order in the matter of disclosure norm violations by real estate major DLF
- Lupin Pharma Canada Limited**, the Canadian subsidiary of Lupin Limited, has launched its first brand product Zaxine under a strategic licensing agreement with the North Carolina based gastrointestinal (GI) specialty company Salix Pharmaceuticals Inc. The agreement grants Lupin exclusive rights to promote, distribute and market Zaxine in the Canada.
- German Producer Price Inflation** rose to a seasonally adjusted annual rate of 0.1%, from 0.1% in the preceding month. Analysts had expected German Producer Price Inflation to rise 0.2% last month.
- Japanese tertiary industry activity index** rose to a seasonally adjusted 0.3%, from 1.4% in the preceding month. Analysts had expected Japanese tertiary industry activity index to fall -0.6% last month.
- Polish Industrial Output** rose to a seasonally adjusted 8.8%, from 4.9% in the preceding month. Analysts had expected Polish Industrial Output to rise to 7.2% last month.
- The U.S. federal funds rate**, which banks charge each other to borrow their excess reserves, averaged 0.13 percent . The U.S. federal funds rate, which banks charge each other to borrow their excess reserves, averaged 0.13 percent
- U.S. Census Bureau** said that wholesale inventories increased by a seasonally adjusted 0.3% in February, compared to forecasts for a 0.2% gain. Business inventories were flat in January.

Result Calendar Q4FY15

| BSE Code | Company Name | Date | BSE Code | Company Name | Date |
|----------|--------------|-----------|----------|--------------|-----------|
| 526921 | 21STCENMGM | 21-Apr-15 | 500550 | SIEMENS | 24-Apr-15 |
| 500089 | DICIND | 21-Apr-15 | 513262 | SSWL | 24-Apr-15 |
| 532281 | HCLTECH | 21-Apr-15 | 509930 | SUPREMEIND | 24-Apr-15 |
| 511000 | MADHUSE | 21-Apr-15 | 512595 | UNIMOVR | 24-Apr-15 |
| 517385 | SYMPHONY | 21-Apr-15 | 513729 | AROGRANITE-₹ | 25-Apr-15 |
| 504961 | TATAYODOGA-₹ | 21-Apr-15 | 538713 | ATISHAY | 25-Apr-15 |
| 509966 | VSTIND | 21-Apr-15 | 532522 | PETRONET | 25-Apr-15 |
| 505412 | WENDT | 21-Apr-15 | 531169 | SKPSEC | 25-Apr-15 |
| 507685 | WIPRO | 21-Apr-15 | 532538 | ULTRACEMCO | 25-Apr-15 |
| 520119 | ASAL | 22-Apr-15 | 531221 | MAYURFL | 26-Apr-15 |
| 506390 | CLNINDIA | 22-Apr-15 | 533573 | APLLTD | 27-Apr-15 |
| 532913 | CSIL | 22-Apr-15 | 531340 | BERVINL | 27-Apr-15 |
| 508906 | EVERESTIND | 22-Apr-15 | 506894 | CHEMFALKAL | 27-Apr-15 |
| 500249 | KSBPUMPS | 22-Apr-15 | 507886 | DHRUVES | 27-Apr-15 |
| 523704 | MASTEK | 22-Apr-15 | 523754 | EPCIN | 27-Apr-15 |
| 500355 | RALLIS | 22-Apr-15 | 532482 | GRANULES | 27-Apr-15 |
| 517320 | SAVINFOCO | 22-Apr-15 | 509675 | HIL | 27-Apr-15 |
| 500405 | SUPPETRO | 22-Apr-15 | 532174 | ICICIBANK | 27-Apr-15 |
| 532648 | YESBANK | 22-Apr-15 | 534816 | INFRATEL | 27-Apr-15 |
| 532840 | ADVANTA | 23-Apr-15 | 538835 | INTELLECT | 27-Apr-15 |
| 502761 | BLUBLND-B | 23-Apr-15 | 500241 | KIRLOSBROS | 27-Apr-15 |
| 532792 | CAIRN | 23-Apr-15 | 532896 | MAGNUM | 27-Apr-15 |
| 532443 | CERA | 23-Apr-15 | 532500 | MARUTI | 27-Apr-15 |
| 532175 | CYIENT | 23-Apr-15 | 512115 | ROSEMER | 27-Apr-15 |
| 523477 | GUJRATGAS | 23-Apr-15 | 500407 | SWARAJENG | 27-Apr-15 |
| 500179 | HCL-INSYS | 23-Apr-15 | 512070 | UPL | 27-Apr-15 |
| 500180 | HDFCBANK | 23-Apr-15 | 530197 | BAGADIA | 28-Apr-15 |
| 502330 | IPAPPM | 23-Apr-15 | 532454 | BHARTIARTL | 28-Apr-15 |
| 533519 | L&TFH | 23-Apr-15 | 532548 | CENTURYPLY | 28-Apr-15 |
| 523457 | LINDEINDIA | 23-Apr-15 | 533167 | COROENGG | 28-Apr-15 |
| 532720 | M&MFIN | 23-Apr-15 | 500135 | ESSELPRO | 28-Apr-15 |
| 500290 | MRF | 23-Apr-15 | 532345 | GATI | 28-Apr-15 |
| 532200 | MYSOREBANK | 23-Apr-15 | 532424 | GODREJCP | 28-Apr-15 |
| 532735 | RSYSTEMINT* | 23-Apr-15 | 532822 | IDEA | 28-Apr-15 |
| 532663 | SASKEN | 23-Apr-15 | 532771 | JHS | 28-Apr-15 |
| 500472 | SKFINDIA | 23-Apr-15 | 500245 | KIRLFER | 28-Apr-15 |
| 533121 | SQSBFSI | 23-Apr-15 | 532400 | KPIT | 28-Apr-15 |
| 506597 | AMAL | 24-Apr-15 | 538503 | MARICOKAYEL | 28-Apr-15 |
| 511243 | CHOLAFIN | 24-Apr-15 | 532504 | NAVINFLUOR | 28-Apr-15 |
| 505790 | FAGBEARING | 24-Apr-15 | 504112 | NELCO | 28-Apr-15 |
| 500150 | FOSECOIND | 24-Apr-15 | 532498 | SHRIRAMCIT | 28-Apr-15 |
| 500189 | HINDUJAVEN | 24-Apr-15 | 538635 | SNOWMAN | 28-Apr-15 |
| 530055 | HRMNYCP | 24-Apr-15 | 517166 | SPELS | 28-Apr-15 |
| 532960 | IBVENTURES | 24-Apr-15 | 500408 | TATAELXSI | 28-Apr-15 |
| 500209 | INFY | 24-Apr-15 | 500425 | AMBUJACEM | 29-Apr-15 |
| 500162 | PARRYUGAR | 24-Apr-15 | 532523 | BIOCON | 29-Apr-15 |
| 513519 | PITTLAM-₹ | 24-Apr-15 | 511072 | DHFL | 29-Apr-15 |
| 512529 | SEQUENT | 24-Apr-15 | 500469 | FEDERALBNK | 29-Apr-15 |

| | | | | | |
|--------|--------------|-----------|--------|--------------|-----------|
| 530141 | GYANDEV | 29-Apr-15 | 523756 | SREINFRA | 1-May-15 |
| 500010 | HDFC | 29-Apr-15 | 513709 | SHILGRAVQ-\$ | 2-May-15 |
| 532129 | HEXAWARE | 29-Apr-15 | 516030 | YASHPPR-\$ | 2-May-15 |
| 500233 | KAJARIACER | 29-Apr-15 | 522134 | ARTSONEN | 4-May-15 |
| 534690 | LAKSHVILAS | 29-Apr-15 | 531768 | POLYMED | 4-May-15 |
| 531324 | ROSELABS | 29-Apr-15 | 533228 | SKSMICRO | 4-May-15 |
| 532983 | RPGLIFE | 29-Apr-15 | 532953 | VGUARD | 4-May-15 |
| 500674 | SANOFI | 29-Apr-15 | 505665 | ABCBEARS-\$ | 5-May-15 |
| 500387 | SHREECEM | 29-Apr-15 | 500040 | CENTURYTEX | 5-May-15 |
| 505827 | SNL | 29-Apr-15 | 500096 | DABUR | 5-May-15 |
| 531359 | SRAMSET | 29-Apr-15 | 526821 | DAICHI-\$ | 5-May-15 |
| 500295 | SSLT | 29-Apr-15 | 511208 | IVC | 5-May-15 |
| 501242 | TCIFINANCE | 29-Apr-15 | 500247 | KOTAKBANK | 5-May-15 |
| 504966 | TINPLATE | 29-Apr-15 | 521018 | MARALOVER | 5-May-15 |
| 532343 | TVSMOTOR | 29-Apr-15 | 511676 | GICHSGFIN | 6-May-15 |
| 531147 | ALICON | 30-Apr-15 | 521234 | SRINACHA-\$ | 6-May-15 |
| 526125 | ARHNTTO | 30-Apr-15 | 531581 | ALKADIA | 7-May-15 |
| 532493 | ASTRAMICRO | 30-Apr-15 | 500620 | GESHIP | 7-May-15 |
| 500027 | ATUL | 30-Apr-15 | 534328 | HEXATRADEX | 7-May-15 |
| 531994 | AUTOPINS | 30-Apr-15 | 500378 | JINDALSAW | 7-May-15 |
| 532215 | AXISBANK | 30-Apr-15 | 500307 | NIRLON | 7-May-15 |
| 531203 | BRANDREAL | 30-Apr-15 | 531209 | NUCLEUS | 7-May-15 |
| 500085 | CHAMBLFERT | 30-Apr-15 | 504959 | STOVACQ | 7-May-15 |
| 506395 | COROMANDEL | 30-Apr-15 | 500114 | TITAN | 7-May-15 |
| 531155 | EPSOMPRO | 30-Apr-15 | 520113 | VESUVIUS | 7-May-15 |
| 509567 | GOACARBON-\$ | 30-Apr-15 | 526269 | CRSTCHM | 8-May-15 |
| 533150 | GODREJPROP | 30-Apr-15 | 507815 | GILLETTE | 8-May-15 |
| 500185 | HCC | 30-Apr-15 | 500165 | KANSAINER | 8-May-15 |
| 532659 | IDFC | 30-Apr-15 | 524000 | MAGMA | 8-May-15 |
| 512329 | JARITEX | 30-Apr-15 | 524558 | NEULANDLAB | 8-May-15 |
| 531692 | KHYATI | 30-Apr-15 | 500459 | PGHH | 8-May-15 |
| 513605 | LANCO INDUST | 30-Apr-15 | 520056 | SUNCLAYLTD | 8-May-15 |
| 500250 | LGBBROSLTD | 30-Apr-15 | 523411 | ADCINDIA | 11-May-15 |
| 533007 | LGBFORGE | 30-Apr-15 | 530889 | ALKA | 11-May-15 |
| 532313 | MAHLIFE | 30-Apr-15 | 532047 | ASIANFILMS | 11-May-15 |
| 530243 | MANGASOF | 30-Apr-15 | 532756 | MAHINDCIE | 11-May-15 |
| 500730 | NOCIL | 30-Apr-15 | 500877 | APOLLOTYRE | 12-May-15 |
| 532481 | NOIDATOLL | 30-Apr-15 | 500477 | ASHOKLEY | 12-May-15 |
| 500313 | OILCOUNTUB | 30-Apr-15 | 534804 | CARERATING | 12-May-15 |
| 521080 | PASARI | 30-Apr-15 | 500124 | DRREDDY | 12-May-15 |
| 532254 | POLARIS | 30-Apr-15 | 503772 | MODWOOL | 12-May-15 |
| 509423 | SEL | 30-Apr-15 | 517334 | MOTHERSUMI | 12-May-15 |
| 532638 | SHOPERSTOP | 30-Apr-15 | 534369 | TBZ | 12-May-15 |
| 511218 | SRTRANSFIN | 30-Apr-15 | 514142 | TTL-\$ | 13-May-15 |
| 531652 | THIRDFIN | 30-Apr-15 | 523736 | DPL | 14-May-15 |
| 523868 | UBEINDL | 30-Apr-15 | 517044 | IDM | 14-May-15 |
| 513375 | CARBORUNIV | 1-May-15 | 506767 | ALKYLAMINE | 15-May-15 |
| 523708 | EIMCOELECO | 1-May-15 | 500420 | TORNTPHARM | 15-May-15 |
| 505700 | ELECON | 1-May-15 | 534742 | ZUARI | 15-May-15 |
| 533088 | MHRIL | 1-May-15 | 500780 | ZUARIGLOB | 15-May-15 |

| | | | | | |
|--------|---------------|-----------|--------|-------------|-----------|
| 532133 | IFGLREFRAC | 16-May-15 | 530779 | DYNAMICP | 28-May-15 |
| 526721 | NICCOPAR-\$ | 16-May-15 | 511092 | JMDTELEFILM | 28-May-15 |
| 532527 | RKFORGE | 16-May-15 | 506113 | LIFELINE | 28-May-15 |
| 532410 | TRANSCOR | 18-May-15 | 530557 | NCLRESE | 28-May-15 |
| 590043 | HARITASEAT-\$ | 19-May-15 | 505250 | GGDANDE | 29-May-15 |
| 532978 | BAJAFINSV | 20-May-15 | 500202 | INDLEASE | 29-May-15 |
| 500034 | BAJFINANCE | 20-May-15 | 523323 | KOVAI | 29-May-15 |
| 532977 | BAJAJ-AUTO | 21-May-15 | 500520 | M&M | 29-May-15 |
| 500490 | BAJAJHLDNG | 21-May-15 | 501343 | MOTOGENFIN | 29-May-15 |
| 500414 | TIMEX-\$ | 21-May-15 | 532777 | NAUKRI | 29-May-15 |
| 532156 | VAIBHAVGBL | 21-May-15 | 531049 | NEELKAN | 29-May-15 |
| 500452 | NEPCAGRO | 22-May-15 | 535514 | PRIMECAPM | 29-May-15 |
| 531077 | NEPCPAPER | 22-May-15 | 532915 | RELIGARE | 29-May-15 |
| 521192 | NEPCTEX | 22-May-15 | 508963 | STRLGUA | 29-May-15 |
| 522113 | TIMKEN | 22-May-15 | 521226 | UNIROYAL | 29-May-15 |
| 532644 | JKCEMENT | 23-May-15 | 531831 | UNISH | 29-May-15 |
| 530835 | ELTROL | 25-May-15 | 526941 | VAICC | 29-May-15 |
| 531528 | MAARSOFTW | 25-May-15 | 511690 | WARNER | 29-May-15 |
| 531319 | MARUTISE | 25-May-15 | 512587 | ZODJRDMKJ | 29-May-15 |
| 532349 | TCI | 25-May-15 | 531223 | ANJANI-\$ | 30-May-15 |
| 500133 | ESABINDIA | 26-May-15 | 532352 | KIRLMU | 30-May-15 |
| 526558 | JAMEHOT | 26-May-15 | 532537 | LUMAXAUTO | 30-May-15 |
| 512618 | RLF | 26-May-15 | 526251 | MIDEASTP | 30-May-15 |
| 500164 | GODREJIND | 27-May-15 | 526891 | MKTCREAT | 30-May-15 |
| 500301 | NEPCMICON | 27-May-15 | 521246 | PARASPETRO | 30-May-15 |
| 523236 | SHRENUJ | 27-May-15 | 531931 | SAICAPI | 30-May-15 |
| 512153 | SPECMKT | 27-May-15 | 530905 | SAINBUS | 30-May-15 |
| 506655 | SUDARSCHM | 27-May-15 | 530125 | SAMRATPH-\$ | 30-May-15 |
| 509038 | VOLLF | 27-May-15 | 524703 | SANDUPHQ | 30-May-15 |
| 500008 | AMARAJABAT | 28-May-15 | 524103 | LINEARPO | 31-May-15 |
| 508939 | BLCISER | 28-May-15 | 511626 | RRFIN | 14-Dec-15 |
| 506405 | DHARAMSI | 28-May-15 | | | |

Result Q4FY15

| NSE CODE | BSE CODE | SALES Rs (cr.) | SALES YOY | PAT Rs Cr | PAT YOY |
|-----------|----------|----------------|-----------|-----------|---------|
| LICHSGFIN | 500253 | 2832.49 | 15.9 | 378.18 | 2.21 |
| DELTACOrP | 532848 | 47.15 | 8.6 | 13.57 | 35.43 |
| HINDZINC | 500188 | 4125 | 13.2 | 1997 | 6.16 |

| Country | Monday 20 April 15 | Tuesday 21 April 15 | Wednesday 22 April 15 | Thursday 23 April 15 | Friday 24 April 15 |
|--------------|---|--|--|--|--|
| US | CB Leading Index m/m . | | Existing Home Sales , Crude Oil Inventories . | Unemployment Claims , New Home Sales , Natural Gas Storage . | Core Durable Goods Orders m/m ,Durable Goods Orders m/m , Revised UoM Consumer Sentiment . |
| UK/EURO ZONE | French Flash Manufacturing PMI ,French Flash Services PMI , German Flash Manufacturing PMI , German Flash Services PMI , Flash Manufacturing PMI , Flash Services PMI . | CPI y/y , German ZEW Economic Sentiment , ZEW Economic Sentiment , PPI Input m/m , RPI y/y . | MPC Official Bank Rate Votes , MPC Asset Purchase Facility Votes . | Spanish Unemployment Rate , German Ifo Business Climate , Retail Sales m/m . | Belgian NBB Business Climate . |
| INDIA | | | | | |

Risk Disclosure & Disclaimer : This report/message is for the personal information of the authorized recipient and does not construe to be any investment, legal or taxation advice to you. Narnolia Securities Ltd. (Hereinafter referred as NSL) is not soliciting any action based upon it. This report/message is not for public distribution and has been furnished to you solely for your information and should not be reproduced or redistributed to any other person in any form. The report/message is based upon publicly available information, findings of our research wing "East wind" & information that we consider reliable, but we do not represent that it is accurate or complete and we do not provide any express or implied warranty of any kind, and also these are subject to change without notice. The recipients of this report should rely on their own investigations, should use their own judgment for taking any investment decisions keeping in mind that past performance is not necessarily a guide to future performance & that the the value of any investment or income are subject to market and other risks. Further it will be safe to assume that NSL and /or its Group or associate Companies, their Directors, affiliates and/or employees may have interests/positions, financial or otherwise, individually or otherwise in the recommended/mentioned securities/mutual funds/ model funds and other investment products which may be added or disposed including & other mentioned in this report/message. NSL or any of its affiliates or employees shall not be in any way responsible for any loss or damage that may arise to any person from any action taken based on the above information or inadvertent error in the information contained in this report/message

Narnolia Securities Ltd.

| | |
|---|--|
| <p>Narnolia Research Lab Stellar IT Park 5th Floor Office Space No. 6 Tower-I/nd Plot No. C-25 Sector-62 Noida Ph : 0120-4215110</p> | <p>Central Strategy Desk - Kolkata 124 1st Floor 7/1 Lords Sinha Road Kolkata - 71 Ph : 033-22821500 M : 93347 14418, 98302 69810</p> |
|---|--|