

SGX NIFTY : 7770.51 ( 25 Pt Up)

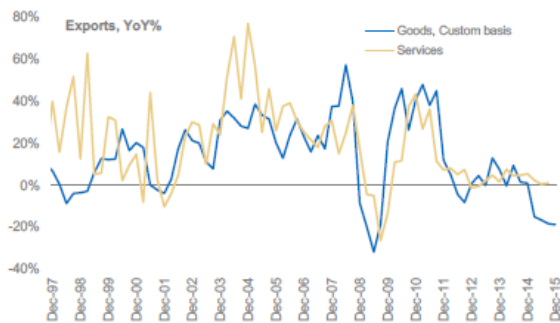
### Quote of the Day

"If you took our top fifteen decisions out, we'd have a pretty average record. It wasn't hyperactivity, but a hell of a lot of patience. You stuck to your principles and when opportunities came along, you pounced on them with vigor."

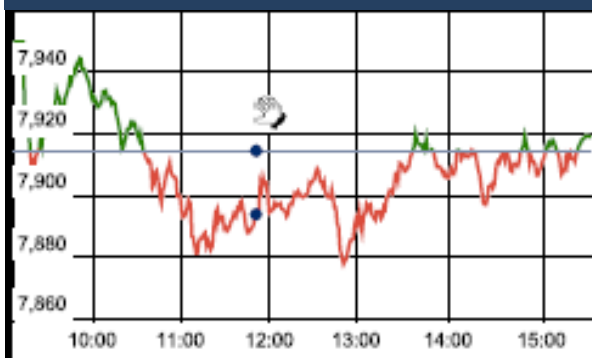
Charlie Munger

### Chart of the Day

#### SERVICE EXPORT TREND



### Index Action Nifty ( 20th Apr 16 )



### Index

Contents	Page	Coverage
News	2	Update
Economic Calendar	3	Update

### Market

Name	Value	Change
Sensex	25,844.18	27.82
Nifty	7914.75	0.05
DOW	17,602.30	120.81
NASDAQ	4,948.13	7.80
CAC	4,591.29	25.44
DAX	10,421.29	71.70
FTSE	6,410.26	4.91
NIKKEI	17,236.37	329.83
HANG SENG	21,555.07	318.79
EW ALL SHARE	13725.67	20.58

### Instituional Turnover

#### FII

Investor	Buy(Cr.)	Sale(Cr.)	Net(Cr.)
20-Apr-16	6021.67	6101.77	(80.10)
Mar,16	86328.26	68139.29	18188.97
2016	229465.72	237488.95	(8023.23)

#### DII

Investor	Buy(Cr.)	Sale(Cr.)	Net(Cr.)
20-Apr-16	1363.42	1663.51	(300.09)
Mar,16	24361.65	37409.39	(13047.74)
2016	106276.62	94873.59	11403.03

### Commodity Price

Commodity/Currencies	Value	
GOLD	29317.00	↓
SILVER	40132.00	↑
CRUDEOIL	41.45	↑
COPPER	327.40	↑
NATURALGAS	138.40	↑
DOLLAR/RS.	66.22	↓
EURO/RS.	75.08	↓
POUND/RS.	95.30	↑

## Market Snapshot

### Top Price Performers

Top Performers 1D	% Change	Top Performers 1W	% Change	Top Performers 1M	% Change
NEXTMEDIA	20.00	ELECTHERM	67.29	KAKATCEM	129.38
ROLATAN	19.96	MSPL	55.22	KIRIINDUS	95.97
BHARTISHIP	19.87	NEXTMEDIA	45.13	ELECTHERM	89.36
CHROMATIC	19.84	BHARTISHIP	40.51	UTTAMSUGAR	77.50
AMTEKAUTO	18.95	RSSOFTWARE	40.32	UGARSUGAR	73.77

Worst Performers 1D	% Change	Worst Performers 1W	% Change	Worst Performers 1M	% Change
BIRLACOT	(20.00)	SRSREAL	(24.41)	VIVIMEDLAB	(79.50)
GREENFIRE	(12.00)	BIRLACOT	(20.00)	RAINBOWPAP	(62.14)
JRG	(8.62)	SHRENUJ	(18.01)	SHREEKRPOL	(42.11)
LLOYDMETAL	(8.08)	GMBREW	(17.42)	RICOHQ	(34.69)
RAJSREESUG	(8.00)	COMFINTE	(15.45)	BILPOWER	(34.51)

## Top News

- **Biocon Inc**, part of biotechnology major Biocon, is recalling in the US 5,505 bottles of cholesterol lowering Simvastatin tablets for being sub-potent, according to the USFDA. The 5,505 bottles of Simvastatin tablets in the strength of 5 mg are being recalled in a firm initiated ongoing recall due to the product being a 'subpotent drug'

- **Supreme Petrochem Mgt guideline**: Stable raw material prices and a 30 percent jump in sales volume led to the big jump in EBITDA margins in the fourth quarter of FY16. The company recently reported stellar profit in the fourth quarter of FY16. The company anticipates an average volume growth of around 14 percent in FY17. It plans to add equipment to make polystyrene into a swing line. With this addition, the company will be able to manufacture styrene methyl methacrylate (SMMA) which can push the SMMA production to 42,000 tonnes. The overall capex of the company is limited to around Rs 23 crore.

- **Mahindra & Mahindra** has decided to double the production of its newly launched KUV100 from 4,500-5,000 units to 7,500 units per month. KUV100 was M&M's foray into petrol engine and its launch was pushed to January 2016 after Supreme Court continued its ban on diesel vehicles in Delhi-NCR region.

- **Bharti Airtel** is looking to monetise another tranche of its holding in the company's tower arm Bharti Infratel. The telecom company will use funds for the upcoming spectrum auctions and to pare debt. The stake sale could be done via block deals in Infratel.

- **National Highway Authority in India (NHAI)** has raised its road construction target for FY17. While the target has been set at 15,000 km for the new fiscal year against 6,000 km in FY16, about 25,000 km has been pegged as a target for awarding national highways projects. This is against the 10,000 km target for last fiscal year.

- **L&T Infrastructure Finance** will raise up to Rs 75 crore through issuance of bonds on a private placement basis. The company intends to issue secured, redeemable, non-convertible debentures (NCDs) of the face value of Rs 25 lakh each, amounting to Rs 75 crore with an option to retain over subscription of Rs 75 crore, on private placement basis,

- **Skipper Ltd** has secured new orders of Rs 200 crore from Powergrid Corp for supply of transmission towers. It is for 765 kv double circuit transmission tower which would be supplied to various projects on a turnkey basis

- **Wipro** will buyback up to four crore shares worth around Rs 2,500 crore. This represents 1.62 percent of the total paid-up equity capital aggregating to 4 crore shares at a price of Rs 625 per share.

- **U.K. claimant count change** rose to a seasonally adjusted 6.7K, from -9.3K in the preceding month whose figure was revised up from -18.0K.

- **U.K. Unemployment Rate** remained unchanged at a seasonally adjusted 5.1%, from 5.1% in the preceding month.

- **German Producer Price Inflation** remained unchanged at a seasonally adjusted annual rate of 0.0%, from -0.5% in the preceding month. Analysts had expected German Producer Price Inflation to rise 0.2% last month.

- **Canadian wholesale sales** fell to a seasonally adjusted -2.2%, from 0.0% in the preceding month. Analysts had expected Canadian wholesale sales to fall -0.3% last month.

**Result Calendar Q4FY16**

BSE Code	Company Name	Date	BSE Code	Company Name	Date
532175	CYIENT	21-Apr-16	500670	GNFC	26-Apr-16
534063	FUTSOL	21-Apr-16	539437	IDFCBANK	26-Apr-16
500188	HINDZINC	21-Apr-16	534816	INFRATEL	26-Apr-16
532187	INDUSINDBK	21-Apr-16	533402	INNOIND	26-Apr-16
511585	REGTRUS	21-Apr-16	500249	KSBPUMPS	26-Apr-16
509930	SUPREMEIND	21-Apr-16	532313	MAHLIFE	26-Apr-16
506597	AMAL	22-Apr-16	532500	MARUTI	26-Apr-16
522134	ARTSONEN	22-Apr-16	532200	MYSOREBANK	26-Apr-16
532459	AUNDEIND	22-Apr-16	500355	RALLIS	26-Apr-16
532792	CAIRN	22-Apr-16	500330	RAYMOND	26-Apr-16
500089	DICIND	22-Apr-16	538635	SNOWMAN	26-Apr-16
526227	FILATEX	22-Apr-16	500407	SWARAJENG	26-Apr-16
500180	HDFCBANK	22-Apr-16	539268	SYNGENE	26-Apr-16
502330	IPAPPM	22-Apr-16	533573	APLLTD	27-Apr-16
532756	MAHINDCIE	22-Apr-16	532454	BHARTIARTL	27-Apr-16
500325	RELIANCE	22-Apr-16	506395	COROMANDEL	27-Apr-16
532663	SASKEN	22-Apr-16	523708	EIMCOELECO	27-Apr-16
504960	STEWARTQ	22-Apr-16	505700	ELECON	27-Apr-16
511736	USHDI	22-Apr-16	523754	EPCIN	27-Apr-16
516030	YASHPPR	22-Apr-16	500086	EXIDEIND	27-Apr-16
504067	ZENSARTECH	22-Apr-16	505790	FAGBEARING	27-Apr-16
514394	AJIL	23-Apr-16	500150	FOSECOIND	27-Apr-16
531268	B2BSOFT	23-Apr-16	532345	GATI	27-Apr-16
531595	CGCL	23-Apr-16	509675	HIL	27-Apr-16
522245	IYKOTHITE	23-Apr-16	533148	JSWENERGY	27-Apr-16
539216	JUNCTION	23-Apr-16	500165	KANSAINER	27-Apr-16
532720	M&MFIN	23-Apr-16	505283	KIRLPNU	27-Apr-16
526935	MBPARIKH	23-Apr-16	532400	KPIT	27-Apr-16
517447	RSSOFTWARE	23-Apr-16	534690	LAKSHVILAS	27-Apr-16
539346	SADBHIN	23-Apr-16	532710	SADBHAV	27-Apr-16
511640	SANGHCO	23-Apr-16	522034	SHANTIGEAR	27-Apr-16
533179	PERSISTENT	24-Apr-16	532498	SHRIRAMCIT	27-Apr-16
500002	ABB	25-Apr-16	532648	YESBANK	27-Apr-16
533167	COROENGG	25-Apr-16	500410	ACC	28-Apr-16
532848	DELTA CORP	25-Apr-16	500425	AMBUJACEM	28-Apr-16
532832	IBREALEST	25-Apr-16	520119	ASAL	28-Apr-16
535789	IBULHSGFIN	25-Apr-16	511196	CANFINHOME	28-Apr-16
532191	SBT	25-Apr-16	500096	DABUR	28-Apr-16
531201	SHILCTECH	25-Apr-16	532482	GRANULES	28-Apr-16
513010	TATASPONGE	25-Apr-16	532281	HCLTECH	28-Apr-16
532538	ULTRACEMCO	25-Apr-16	532822	IDEA	28-Apr-16
524661	WELCURE	25-Apr-16	500233	KAJARIACER	28-Apr-16
514162	WELSPUNIND	25-Apr-16	532889	KPRMILL	28-Apr-16
506235	ALEMBICLTD	26-Apr-16	538771	PINCON	28-Apr-16
500215	ATFL	26-Apr-16	507300	RAVALSUGAR	28-Apr-16
532215	AXISBANK	26-Apr-16	531359	SRAMSET	28-Apr-16
531340	BERVINL	26-Apr-16	513262	SSWL	28-Apr-16

532523	BIOCON	26-Apr-16	500408	TATAELXSI	28-Apr-16
501242	TCIFINANCE	28-Apr-16	507815	GILLETTE	05-May-16
505412	WENDT	28-Apr-16	533150	GODREJPROP	05-May-16
530117	ADIFINCHM	29-Apr-16	500211	INSILCO	05-May-16
532331	AJANTPHARM	29-Apr-16	532529	NDTV	05-May-16
500027	ATUL	29-Apr-16	500730	NOCIL	05-May-16
511243	CHOLAFIN	29-Apr-16	500459	PGHH	05-May-16
508906	EVERESTIND	29-Apr-16	522004	BATLIBOI	06-May-16
500033	FORCEMOT	29-Apr-16	502420	ORIENTPPR	06-May-16
511676	GICHSGFIN	29-Apr-16	511632	OLYMTFI	07-May-16
532174	ICICIBANK	29-Apr-16	505665	ABCBEAR	10-May-16
532659	IDFC	29-Apr-16	511728	KZLFIN	10-May-16
500245	KIRLFER	29-Apr-16	500085	CHAMBLFERT	11-May-16
523457	LINDEINDIA	29-Apr-16	500247	KOTAKBANK	11-May-16
500674	SANOFI	29-Apr-16	533553	TDPOWERSYS	11-May-16
531003	SWRNASE	29-Apr-16	531213	MANAPPURAM	12-May-16
513434	TATAMETALI	29-Apr-16	500790	NESTLEIND	12-May-16
504966	TINPLATE	29-Apr-16	524378	JMDEPACKR	13-May-16
512070	UPL	29-Apr-16	526947	LAOPALA	13-May-16
524226	GAEL	30-Apr-16	506590	PHILIPCARB	13-May-16
500250	LGBBROSLTD	30-Apr-16	534742	ZUARI	13-May-16
533007	LGBFORGE	30-Apr-16	500780	ZUARIGLOB	13-May-16
530243	MANGASOF	30-Apr-16	532166	ALKASEC	14-May-16
516062	NATPLY	30-Apr-16	532133	IFGLREFRAC	14-May-16
532504	NAVINFLUOR	30-Apr-16	517334	MOTHERSUMI	17-May-16
500452	NEPCAGRO	30-Apr-16	532173	CYBERTECH	19-May-16
500301	NEPCMICON	30-Apr-16	500133	ESABINDIA	19-May-16
531077	NEPCPAPER	30-Apr-16	532988	RANEENGINE	19-May-16
521192	NEPCTEX	30-Apr-16	533023	WABCOINDIA	19-May-16
524204	TEEAI	30-Apr-16	524558	NEULANLAB	20-May-16
523868	UBEINDL	30-Apr-16	532661	RML	20-May-16
500010	HDFC	02-May-16	522113	TIMKEN	20-May-16
533519	L&T;TFH	02-May-16	526775	VALIANT	20-May-16
507912	LKPFIN	02-May-16	533470	RUSHIL	21-May-16
500264	MAFATIND	02-May-16	521240	SAMBANDAM	21-May-16
500040	CENTURYTEX	03-May-16	500266	MAHSCOOTER	23-May-16
532424	GODREJCP	03-May-16	532987	RBL	23-May-16
511208	IVC	03-May-16	532978	BAJAJFINSV	24-May-16
532638	SHOPERSTOP	03-May-16	500034	BAJAFINANCE	24-May-16
532343	TVSMOTOR	03-May-16	523736	DPL	24-May-16
513375	CARBORUNIV	04-May-16	523642	PIIND	24-May-16
500280	CENTENKA	04-May-16	532977	BAJAJ-AUTO	25-May-16
504112	NELCO	04-May-16	500490	BAJAJHLDNG	25-May-16
535754	ORIENTCEM	04-May-16	500660	GLAXO	25-May-16
533228	SKSMICRO	04-May-16	533217	HMVL	25-May-16
532513	TVSELECT	04-May-16	532777	NAUKRI	25-May-16
520113	VESUVIUS	04-May-16	533158	THANGAMAYL	25-May-16
532953	VGUARD	04-May-16	532662	HTMEDIA	26-May-16
531162	EMAMILTD	05-May-16	500387	SHREECEM	26-May-16

531049	NEELKAN	27-May-16	531737	GREENCREST	30-May-16
505800	RANEHOLDIN	27-May-16	532851	INSECTICID	30-May-16
506655	SUDARSCHEM	27-May-16	530405	JINDCAP	30-May-16
508939	BLCISER	28-May-16	539446	KRISHFAB	30-May-16
538319	GCMCAPI	28-May-16	531164	LADIAMO	30-May-16
511092	JMDTELEFILM	28-May-16	506113	LIFELINE	30-May-16
533202	NITESHEST	28-May-16	531319	MARUTISE	30-May-16
524038	VENLONENT	28-May-16	514332	NEOINFRA	30-May-16
509038	VOLLF	28-May-16	535514	PRIMECAPM	30-May-16
531175	BLSINFOTE	30-May-16	530125	SAMRATPH	30-May-16
500067	BLUESTARCO	30-May-16	526532	SFPIL	30-May-16
539131	CLLIMITED	30-May-16	531411	TUNITEX	30-May-16
507833	COMPUPN	30-May-16	521226	UNIROYAL	30-May-16
535917	GCMCOMM	30-May-16	531831	UNISH	30-May-16
535431	GCMSECU	30-May-16	531762	UNJHAFOR	30-May-16
531608	GORANIN	30-May-16	539123	VBIND	30-May-16

#### EARNING ESTIMATE Q4FY16

BSE Code	Company Name	SALES ( Cr. )	SALES Growth	PAT ( Cr. )	PAT Growth
500188	HINDZINC	2804	-32.00	1327	-33.90
532792	CAIRN	1690	-36.90	-40	PL
532175	CYIENT	820	12.30	101	7.60
532819	MINDTREE	1300	41.60	147	14.50
532540	TCS	28457	17.50	6196	4.90
507685	WIPRO	13735	13.10	2215	-2.60
500180	HDFCBANK	7206	19.80	3370	20.10
532187	INDUSINDBK	1203	30.00	628	26.80
511288	GRUH	157	28.10	86	15.70
500253	LICHSGFIN	878	35.10	482	27.50
532720	M&MFIN	936	6.00	258	-22.70

#### RESULT Q4FY16

BSE Code	Company Name	SALES ( Cr. )	SALES Growth	PAT ( Cr. )	PAT Growth
526612	BLUEDART	629.31	10.21	40.49	16.55
532800	TV18BRDCST	671.33	6.60	82.51	(13.57)
509567	GOACARBON	67.01	(25.35)	0.41	(145.56)
509162	INDAG	55.57	(10.60)	7.64	(0.26)
507960	GUJHOTE	0.90	(5.26)	0.60	(4.76)
507753	SREERAYALK	207.23	5.06	2.23	(66.91)
523229	BHARATSE	175.26	1.71	2.75	133.05
500186	HINDOILEXP	5.80	(5.07)	1.38	(67.61)
523445	RIIL	22.77	2.89	2.79	(29.55)
512455	LLOYDMETAL	81.82	10.75	(2.63)	(1152.00)
511288	GRUH	366.91	13.40	87.82	63.42
523704	MASTEK	124.02	(9.78)	5.86	641.77
500209	INFY	16550.00	4.07	3597.00	3.81
500213	INTLTRAVHS	47.85	2.05	1.93	(16.09)
507488	GMBREW	91.70	(1.26)	17.42	11.88
500253	LICHSGFIN	3205.66	3.35	448.02	6.95
521248	KITEX	172.27	56.62	44.90	86.54

532819	MINDTREE	1205.10	7.51	177.50	23.69
511766	MUTHTFN	63.37	9.58	6.87	13.37
532540	TCS	28448.61	3.96	6413.12	5.42
532742	PAUSHAKLTD	16.77	0.90	1.67	(24.09)
533229	BAJAJCORP	227.79	7.06	54.02	8.93
532798	NETWORK18	902.93	7.58	(3.70)	(134.97)

Economic Calendar					
Country	Monday 18th April 16	Tuesday 19th April 16	Wednesday 20th April 16	Thursday 21th April 16	Friday 22th April 16
US		Building Permits , Housing Starts.	Existing Home Sales .	Philly Fed Manufacturing Index , Unemployment Claims , HPI m/m, Flash Manufacturing PMI , Flash Services PMI , CB Leading Index m/m , Natural Gas Storage.	
UK/EURO ZONE	German Buba Monthly Report.	German ZEW Economic Sentiment , ZEW Economic Sentiment , Current Account	Average Earnings Index 3m/y , Claimant Count Change, German PPI m/m , Unemployment Rate , Italian Retail Sales m/m , CBI Industrial Order Expectations .	French Flash Manufacturing PMI , French Flash Services PMI , Spanish Unemployment Rate , German Constitutional Court Ruling , German Flash Manufacturing PMI , German Flash Services PMI , Flash Manufacturing PMI, Flash Services PMI , Minimum Bid Rate , ECB Press Conference .	German Ifo Business Climate , Belgian NBB Business Climate .
INDIA					



(Regn. No. : INP 00004011)

## Narnolia Securities Ltd.

### Narnolia Research Lab

Stellar IT Park | 5th Floor | Office Space No. 6 | Tower-II Ind Plot No. C-25 | Sector-62 | Noida | Ph : 0120-4215110

### Narnolia Securities Ltd.

201 | 2nd Floor | Marble Arch Building | 236B-AJC Bose Road Kolkata-700 020 Ph : 033-40501500  
Email : narnolia@narnolia.com website : www.narnolia.com