

SGX NIFTY : 8584 (4.50 Pt Down)

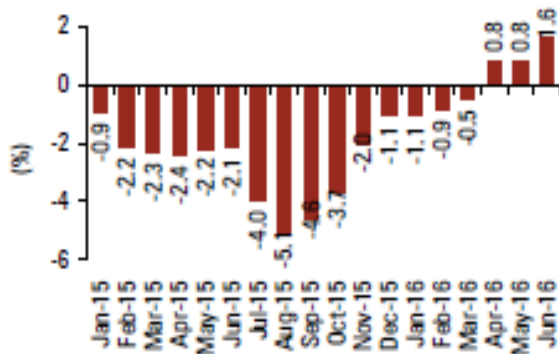
Quote of the Day

"Even with a margin [of safety] in the investor's favor, an individual security may work out badly. For the margin guarantees only that he has a better chance for profit than for loss - not that loss is impossible. But as the number of such commitments is increased the more certain does it become that the aggregate of the profits will exceed the aggregate of the losses."

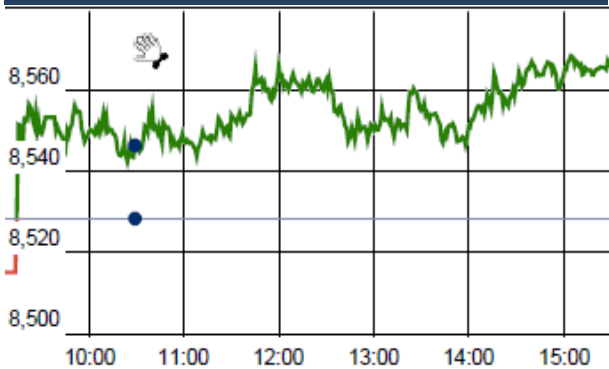
Benjamin Graham

Chart of the Day

WPI Trend



Index Action Nifty (20th July 16)



Index

| Contents | Page | Coverage |
|-------------------|------|----------|
| News | 2 | Update |
| Economic Calendar | 3 | Update |

Market

| Name | Value | Change |
|--------------|-----------|--------|
| Sensex | 27,915.89 | 128.27 |
| Nifty | 8565.85 | 37.30 |
| DOW | 18,595.03 | 36.02 |
| NASDAQ | 5,036.37 | 6.78 |
| CAC | 4,379.76 | 49.63 |
| DAX | 10,142.01 | 160.77 |
| FTSE | 6,728.99 | 31.62 |
| NIKKEI | 16,890.25 | 208.36 |
| HANG SENG | 21,992.69 | 110.21 |
| EW ALL SHARE | 14930.37 | 125.41 |

Instituional Turnover

FII

| Investor | Buy(Cr.) | Sale(Cr.) | Net(Cr.) |
|-----------|-----------|-----------|----------|
| 20-Jul-16 | 4669.70 | 4454.49 | 215.21 |
| July,16 | 46181.57 | 41448.52 | 4733.05 |
| 2016 | 559715.83 | 549001.23 | 10714.60 |

DII

| Investor | Buy(Cr.) | Sale(Cr.) | Net(Cr.) |
|-----------|-----------|-----------|-----------|
| 20-Jul-16 | 2373.99 | 2419.44 | (45.45) |
| July,16 | 19940.08 | 23372.01 | (3431.93) |
| 2016 | 234398.16 | 227371.31 | 7026.85 |

Commodity Price

| Commodity/Currencies | Value | |
|----------------------|----------|---|
| GOLD | 30737.00 | ↓ |
| SILVER | 46072.00 | ↓ |
| CRUDEOIL | 47.37 | ↑ |
| COPPER | 336.40 | ↓ |
| NATURALGAS | 179.20 | ↓ |
| DOLLAR/RS. | 67.20 | ↑ |
| EURO/RS. | 74.07 | ↑ |
| POUND/RS. | 88.92 | ↑ |

Market Snapshot

Top Price Performers

| Top Performers 1D | % Change | Top Performers 1W | % Change | Top Performers 1M | % Change |
|-------------------|----------|-------------------|----------|-------------------|----------|
| TATAMETALI | 19.99 | LAKSHMIEFL | 58.68 | AMTEKINDIA | 113.92 |
| ANANTRAJ | 19.98 | JINDCOT | 43.97 | JINDCOT | 97.27 |
| SATHAISPAT | 19.95 | JHS | 33.72 | DECNGOLD | 79.82 |
| JBMA | 19.19 | BVCL | 32.04 | RAMSARUP | 76.30 |
| TINPLATE | 17.88 | DECNGOLD | 31.82 | AROGRANITE | 70.83 |

| Worst Performers 1D | % Change | Worst Performers 1W | % Change | Worst Performers 1M | % Change |
|---------------------|----------|---------------------|----------|---------------------|----------|
| SPMLINFRA | (10.00) | MANDHANA | (18.39) | MANDHANA | (62.15) |
| FARMAXIND | (7.69) | SUPREMETEX | (18.38) | DCMSRMIND | (58.55) |
| MSPL | (5.77) | BLBLIMITED | (18.33) | SHRENUJ | (46.27) |
| HCL-INSYS | (5.62) | SHRENUJ | (18.28) | SUNASIAN | (29.59) |
| SRS LTD | (5.58) | LLOYDSTEEL | (16.00) | KPIT | (29.09) |

Top News

- JBM Auto Mgt Guideline** : The company has entered in to joint venture with European bus manufacturer Solaris Bus & Coach SA to manufacture India's first 100 percent electric buses ECOLIFE in the country. JBM Solaris will invest Rs 300 crore towards engineering, design and development, manufacturing, supply chain development among other focus areas in this electric mobility project completely made in India. The production of ECOLIFE will start by Q4 of FY 2016-17 at Kosi, Uttar Pradesh.

- Sun Pharma** gets FDA nod for rosuvastatin calcium tablets

>>Rosuvastatin calcium tabs are generic version of Crestor tablets of IPR Pharmaceuticals, Inc. Approval has been granted in the strengths of 5 mg, 10 mg, 20 mg and 40 mg.

>>Quoting IMS sales data for the 12 months to May 2016, Sun Pharma said Rosuvastatin calcium tablets achieved annual sales of around USD 6.78 billion

- KDDL Mgt Guideline** : Revenue growth will be back to double digits by the end of FY17 and the EBITDA margins in retail can go up to 9 percent . online sales contribute around 27 percent to total sales and 40 percent of sales come from watches priced above Rs 2 lakh.

- ACC** has commenced commercial production from new 2.79 million tonne per annum clinker facility in Jamul, Chhattisgarh with effect from July 19. The company's two new cement grinding facilities, one each at Jamul in Chhattisgarh and Sindri in Jharkhand state, are expected to be commissioned within Q3-2016.

- Greenply Industries** has incorporated a step-down wholly owned subsidiary company named GREENPLY GABON SA in Gabon, West Africa on July 14, 2016.

- BHEL** has commissioned third unit of the 4x40 mw Teesta Low Dam hydroelectric project stage-IV in West Bengal . The final unit of the project is also in advanced stages of execution . Power generation from project will result in reduction of green-house gas emissions and will help in achieving a low carbon development path for the state as well as the nation,

- Lupin** has launched its Norgestimate and Ethinyl Estradiol Tablets USP, 0.18 mg / 0.035 mg, 0.215 mg / 0.035 mg and 0.25 mg / 0.035 mg having received an approval from the USFDA earlier to market a generic version of Janssen Pharmaceuticals, Inc.'s Ortho Tri-Cyclen Tablets.

- M&M** launches new mild hybrid Scorpio priced upto Rs 14 lakh . The new version is equipped with 'Intelli-Hybrid' technology that helps reduce fuel consumption by up to 7 percent by assisting the engine with electric power during acceleration, automatically switching the engine off while the vehicle is stationary (start-stop) and re-using brake energy, which would otherwise be wasted.

- The promoters of VRL Logistics** have decided to withdraw their plan to enter into the civil aviation space . the company has stated that regional connectivity-related aspects in the new policy don't augur well for the company's planned business model.

- Polish Retail Sales** rose to a seasonally adjusted annual rate of 4.6%, from 2.2% in the preceding quarter. Analysts had expected Polish Retail Sales to rise to 3.7% in the last quarter.

- Euro zone ZEW economic sentiment** fell to a seasonally adjusted -14.7, from 20.2 in the preceding month. Analysts had expected Euro zone ZEW economic sentiment to fall to 12.3 last month.

- U.K. Retail Price Inflation** rose to a seasonally adjusted 1.6%, from 1.4% in the preceding quarter. Analysts had expected U.K. Retail Price Inflation to rise to 1.5% in the last quarter.

- U.K. PPI input** rose to a seasonally adjusted 1.8%, from 2.2% in the preceding month whose figure was revised down from 2.6%. Analysts had expected U.K. PPI input to rise 1.3% last month.

Result Calendar Q1FY17

| BSE Code | Company Name | Result Date | BSE Code | Company Name | Result Date |
|----------|--------------|-------------|----------|--------------|-------------|
| 500002 | ABB | 21-Jul-16 | 531508 | EVEREADY | 25-Jul-16 |
| 532475 | APTECHT | 21-Jul-16 | 514167 | GANECOS | 25-Jul-16 |
| 533228 | BHARATFIN | 21-Jul-16 | 500171 | GHCL | 25-Jul-16 |
| 532523 | BIOCON | 21-Jul-16 | 526797 | GREENPLY | 25-Jul-16 |
| 532792 | CAIRN | 21-Jul-16 | 523398 | HITACHIOM | 25-Jul-16 |
| 500670 | GNFC | 21-Jul-16 | 535789 | IBULHSGFIN | 25-Jul-16 |
| 500180 | HDFCBANK | 21-Jul-16 | 532162 | JKPAPER | 25-Jul-16 |
| 500292 | HEIDELBERG | 21-Jul-16 | 500239 | KGDENIM | 25-Jul-16 |
| 500440 | HINDALCO | 21-Jul-16 | 533302 | KICL | 25-Jul-16 |
| 505726 | IFBIND | 21-Jul-16 | 532889 | KPRMILL | 25-Jul-16 |
| 500241 | KIRLOSROS | 21-Jul-16 | 500235 | KSL | 25-Jul-16 |
| 500247 | KOTAKBANK | 21-Jul-16 | 500266 | MAHSCOOTER | 25-Jul-16 |
| 523782 | MITSHI | 21-Jul-16 | 500126 | MERCK | 25-Jul-16 |
| 532987 | RBL | 21-Jul-16 | 532777 | NAUKRI | 25-Jul-16 |
| 530883 | SUCROSA | 21-Jul-16 | 532504 | NAVINFLUOR | 25-Jul-16 |
| 539268 | SYNGENE | 21-Jul-16 | 539016 | NEIL | 25-Jul-16 |
| 523537 | APMIN | 22-Jul-16 | 532988 | RANEENGINE | 25-Jul-16 |
| 532215 | AXISBANK | 22-Jul-16 | 522034 | SHANTIGEAR | 25-Jul-16 |
| 506365 | CHEMOPH | 22-Jul-16 | 539378 | SML | 25-Jul-16 |
| 533167 | COROENGG | 22-Jul-16 | 530231 | SUBSM | 25-Jul-16 |
| 531346 | EASTRED | 22-Jul-16 | 514211 | SUMMEETINDS | 25-Jul-16 |
| 539844 | EQUITAS | 22-Jul-16 | 513010 | TATASPONGE | 25-Jul-16 |
| 500469 | FEDERALBNK | 22-Jul-16 | 532331 | AJANTPHARM | 26-Jul-16 |
| 505283 | KIRLPNU | 22-Jul-16 | 500425 | AMBUJACEM | 26-Jul-16 |
| 532720 | M&MFIN | 22-Jul-16 | 531310 | AVAILFC | 26-Jul-16 |
| 500162 | PARRYSUGAR | 22-Jul-16 | 532978 | BAJAFINSV | 26-Jul-16 |
| 533179 | PERSISTENT | 22-Jul-16 | 500034 | BAJFINANCE | 26-Jul-16 |
| 532661 | RML | 22-Jul-16 | 500039 | BANCOINDIA | 26-Jul-16 |
| 500674 | SANOFI | 22-Jul-16 | 531595 | CGCL | 26-Jul-16 |
| 504960 | STEWARTQ | 22-Jul-16 | 506395 | COROMANDEL | 26-Jul-16 |
| 539871 | THYROKARE | 22-Jul-16 | 500124 | DRREDDY | 26-Jul-16 |
| 532410 | TRANSCOR | 22-Jul-16 | 500123 | ELANTAS | 26-Jul-16 |
| 522134 | ARTSONEN | 23-Jul-16 | 505700 | ELECON | 26-Jul-16 |
| 526433 | ASMTEC | 23-Jul-16 | 500650 | EXCELINDUS | 26-Jul-16 |
| 524330 | JAYAGROGN | 23-Jul-16 | 532809 | FSL | 26-Jul-16 |
| 517415 | LEENEE | 23-Jul-16 | 534063 | FUTSOL | 26-Jul-16 |
| 526299 | MPHASIS | 23-Jul-16 | 509567 | GOACARBON | 26-Jul-16 |
| 531254 | OPTIFIN | 23-Jul-16 | 532659 | IDFC | 26-Jul-16 |
| 539921 | SEIL | 23-Jul-16 | 539437 | IDFCBANK | 26-Jul-16 |
| 502450 | SESHAPAPER | 23-Jul-16 | 533047 | IMFA | 26-Jul-16 |
| 506690 | UNICHEMLAB | 23-Jul-16 | 534816 | INFRATEL | 26-Jul-16 |
| 507525 | AMRITCORP | 25-Jul-16 | 500210 | INGERRAND | 26-Jul-16 |
| 520119 | ASAL | 25-Jul-16 | 504786 | INVPRECQ | 26-Jul-16 |
| 533229 | BAJAJCORP | 25-Jul-16 | 590003 | KARURVYSYA | 26-Jul-16 |
| 532483 | CANBK | 25-Jul-16 | 500250 | LGBBROSLTD | 26-Jul-16 |
| 507886 | DHRUVES | 25-Jul-16 | 532756 | MAHINDCIE | 26-Jul-16 |
| 523708 | EIMCOELECO | 25-Jul-16 | 538970 | MANVIJAY | 26-Jul-16 |

| | | | | | |
|--------|------------|-----------|--------|------------|-----------|
| 523642 | PIIND | 26-Jul-16 | 517372 | GUJINTRX | 28-Jul-16 |
| 532460 | PONNIERODE | 26-Jul-16 | 500185 | HCC | 28-Jul-16 |
| 500337 | PRIMESECU | 26-Jul-16 | 509675 | HIL | 28-Jul-16 |
| 512591 | PULSRIN | 26-Jul-16 | 533192 | KCPSUGIND | 28-Jul-16 |
| 500407 | SWARAJENG | 26-Jul-16 | 507598 | KLRF | 28-Jul-16 |
| 500408 | TATAELXSI | 26-Jul-16 | 517449 | MAGNAELQ | 28-Jul-16 |
| 532343 | TVSMOTOR | 26-Jul-16 | 532313 | MAHLIFE | 28-Jul-16 |
| 532953 | VGUARD | 26-Jul-16 | 531727 | MENNPIS | 28-Jul-16 |
| 524129 | VINYLINDIA | 26-Jul-16 | 513496 | MEWATZI | 28-Jul-16 |
| 505412 | WENDT | 26-Jul-16 | 533398 | MUTHOOTFIN | 28-Jul-16 |
| 505537 | ZEEL | 26-Jul-16 | 500313 | OILCOUNTUB | 28-Jul-16 |
| 500820 | ASIANPAINT | 27-Jul-16 | 504093 | PANAENERG | 28-Jul-16 |
| 500215 | ATFL | 27-Jul-16 | 530931 | STANPACK | 28-Jul-16 |
| 532977 | BAJAJ-AUTO | 27-Jul-16 | 521200 | SURYALAXMI | 28-Jul-16 |
| 500490 | BAJAJHLDNG | 27-Jul-16 | 532156 | VAIBHAVGBL | 28-Jul-16 |
| 532454 | BHARTIARTL | 27-Jul-16 | 501370 | WALCHPF | 28-Jul-16 |
| 500870 | CASTROLIND | 27-Jul-16 | 512587 | ZODJRD MKJ | 28-Jul-16 |
| 500096 | DABUR | 27-Jul-16 | 511359 | ADMANUM | 29-Jul-16 |
| 500123 | ELANTAS | 27-Jul-16 | 506767 | ALKYLAMINE | 29-Jul-16 |
| 508906 | EVERESTIND | 27-Jul-16 | 521097 | AMARJOTHI | 29-Jul-16 |
| 511676 | GICHSGFIN | 27-Jul-16 | 524663 | BIBCL | 29-Jul-16 |
| 500010 | HDFC | 27-Jul-16 | 535620 | BINNYMILLS | 29-Jul-16 |
| 517044 | IDM | 27-Jul-16 | 532974 | BIRLAMONEY | 29-Jul-16 |
| 504741 | INDIANHUME | 27-Jul-16 | 511243 | CHOLAFIN | 29-Jul-16 |
| 502330 | IPAPPM | 27-Jul-16 | 539876 | CROMPTON | 29-Jul-16 |
| 512103 | NIDHGRN | 27-Jul-16 | 517477 | ELNET | 29-Jul-16 |
| 500730 | NOCIL | 27-Jul-16 | 530333 | EMGEECA | 29-Jul-16 |
| 500360 | RAPICUT | 27-Jul-16 | 523754 | EPCIN | 29-Jul-16 |
| 526492 | RISHIROOP | 27-Jul-16 | 505714 | GABRIEL | 29-Jul-16 |
| 532983 | RPGLIFE | 27-Jul-16 | 532424 | GODREJCP | 29-Jul-16 |
| 526477 | SAENTER | 27-Jul-16 | 530469 | GSLSEC | 29-Jul-16 |
| 502090 | SAGCEM | 27-Jul-16 | 519552 | HERITGFOOD | 29-Jul-16 |
| 523598 | SCI | 27-Jul-16 | 532174 | ICICIBANK | 29-Jul-16 |
| 511218 | SRTRANSFIN | 27-Jul-16 | 532612 | INDOCO | 29-Jul-16 |
| 524542 | SUKHJITS | 27-Jul-16 | 500165 | KANSAINER | 29-Jul-16 |
| 521180 | SUPERSPIN | 27-Jul-16 | 502150 | KLYNCEM | 29-Jul-16 |
| 530401 | VINYOFL | 27-Jul-16 | 532652 | KTKBANK | 29-Jul-16 |
| 532648 | YESBANK | 27-Jul-16 | 539524 | LALPATHLAB | 29-Jul-16 |
| 538778 | AKASHDEEP | 28-Jul-16 | 500510 | LT | 29-Jul-16 |
| 538777 | ASIACAP | 28-Jul-16 | 500264 | MAFATIND | 29-Jul-16 |
| 526612 | BLUEDART | 28-Jul-16 | 500262 | MAFATLAFIN | 29-Jul-16 |
| 500147 | CMIFPE | 28-Jul-16 | 530243 | MANGASOF | 29-Jul-16 |
| 590031 | DENORA | 28-Jul-16 | 512065 | MRUTR | 29-Jul-16 |
| 505200 | EICHERMOT | 28-Jul-16 | 520043 | MUNJALSHOW | 29-Jul-16 |
| 533477 | ENKEIWHEL | 28-Jul-16 | 531049 | NEELKAN | 29-Jul-16 |
| 505790 | FAGBEARING | 28-Jul-16 | 500790 | NESTLEIND | 29-Jul-16 |
| 500139 | FEDDERLOYD | 28-Jul-16 | 508941 | PANCARBON | 29-Jul-16 |
| 500660 | GLAXO | 28-Jul-16 | 511702 | PARSHINV | 29-Jul-16 |
| 531600 | GOGIACAP | 28-Jul-16 | 500331 | PIDILITIND | 29-Jul-16 |

| | | | | | |
|--------|------------|-----------|--------|------------|-----------|
| 519439 | PIONAGR | 29-Jul-16 | 500043 | BATAINDIA | 03-Aug-16 |
| 539354 | POLYSPIN | 29-Jul-16 | 509480 | BERGEPAIN | 03-Aug-16 |
| 532826 | RAJTV | 29-Jul-16 | 513375 | CARBORUNIV | 03-Aug-16 |
| 530271 | RICHUNV | 29-Jul-16 | 531162 | EMAMILTD | 03-Aug-16 |
| 532638 | SHOPERSTOP | 29-Jul-16 | 500133 | ESABINDIA | 03-Aug-16 |
| 504398 | SJCORP | 29-Jul-16 | 531319 | MARUTISE | 03-Aug-16 |
| 512014 | SOBME | 29-Jul-16 | 535754 | ORIENTCEM | 03-Aug-16 |
| 532872 | SPARC | 29-Jul-16 | 526109 | PRICOL | 03-Aug-16 |
| 501110 | SUNRINV | 29-Jul-16 | 500346 | PUNJCOMMU | 03-Aug-16 |
| 511333 | VLSFINANCE | 29-Jul-16 | 500260 | RAMCOCEM | 03-Aug-16 |
| 531519 | ANKUSHFI | 30-Jul-16 | 500414 | TIMEX | 03-Aug-16 |
| 512247 | ASHCAP | 30-Jul-16 | 506597 | AMAL | 04-Aug-16 |
| 508933 | AYMSYNTEX | 30-Jul-16 | 532345 | GATI | 04-Aug-16 |
| 531458 | BOSTONBIO | 30-Jul-16 | 506480 | GOCLCORP | 04-Aug-16 |
| 531472 | CYBELEIND | 30-Jul-16 | 533217 | HMVL | 04-Aug-16 |
| 531270 | DAZZEL | 30-Jul-16 | 505737 | INTLCOMBQ | 04-Aug-16 |
| 530705 | FLORATX | 30-Jul-16 | 524084 | MONSANTO | 04-Aug-16 |
| 524754 | GUJMEDI | 30-Jul-16 | 504973 | TUBEINVEST | 04-Aug-16 |
| 504176 | HIGHENE | 30-Jul-16 | 523411 | ADCINDIA | 05-Aug-16 |
| 532041 | HINDBIO | 30-Jul-16 | 500049 | BEL | 05-Aug-16 |
| 500220 | JASCH | 30-Jul-16 | 534804 | CARERATING | 05-Aug-16 |
| 512455 | LLOYDSME | 30-Jul-16 | 517544 | CENTUM | 05-Aug-16 |
| 531221 | MAYURFL | 30-Jul-16 | 532662 | HTMEDIA | 05-Aug-16 |
| 538890 | MKEXIM | 30-Jul-16 | 523323 | KOVAI | 05-Aug-16 |
| 526831 | NAINAMS | 30-Jul-16 | 500252 | LAXMIMACH | 05-Aug-16 |
| 531272 | NIKKIGL | 30-Jul-16 | 532529 | NDTV | 05-Aug-16 |
| 533470 | RUSHIL | 30-Jul-16 | 530555 | PARACABLES | 05-Aug-16 |
| 522152 | SOLIMAC | 30-Jul-16 | 532782 | SUTLEJTEX | 05-Aug-16 |
| 530565 | SSLFINANCE | 30-Jul-16 | 507747 | TTKHEALTH | 05-Aug-16 |
| 513488 | SSWRL | 30-Jul-16 | 532133 | IFGLREFRAC | 06-Aug-16 |
| 510245 | SWASTIVI | 30-Jul-16 | 526558 | JAMEHOT | 06-Aug-16 |
| 531762 | UNJHAFOR | 30-Jul-16 | 532865 | MEGH | 06-Aug-16 |
| 524038 | VENLONENT | 30-Jul-16 | 500456 | PASUPTAC | 06-Aug-16 |
| 516030 | YASHPPR | 30-Jul-16 | 521234 | SRINACHA | 06-Aug-16 |
| 511403 | SAIJEEV | 31-Jul-16 | 500825 | BRITANNIA | 08-Aug-16 |
| 532230 | BENGALT | 01-Aug-16 | 530457 | CINERAD | 08-Aug-16 |
| 500067 | BLUESTARCO | 01-Aug-16 | 500830 | COLPAL | 08-Aug-16 |
| 532744 | GTNTEX | 01-Aug-16 | 522261 | DOLPHINOFF | 08-Aug-16 |
| 505893 | HINDHARD | 01-Aug-16 | 511208 | IVC | 08-Aug-16 |
| 514326 | PATSPINLTD | 01-Aug-16 | 590066 | KCP | 08-Aug-16 |
| 501154 | ROSEI | 01-Aug-16 | 504258 | LAKSELEC | 08-Aug-16 |
| 531869 | SACHEMT | 01-Aug-16 | 537800 | MANGIND | 08-Aug-16 |
| 590072 | SUNDRMBRAK | 01-Aug-16 | 530759 | STERTOOLS | 08-Aug-16 |
| 512527 | SUPER | 01-Aug-16 | 500877 | APOLLOTYRE | 09-Aug-16 |
| 511339 | APPLECREDT | 02-Aug-16 | 506820 | ASTRAZEN | 09-Aug-16 |
| 539979 | DIGJAMLTD | 02-Aug-16 | 500144 | FINCABLES | 09-Aug-16 |
| 500840 | EIHOTEL | 02-Aug-16 | 531213 | MANAPPURAM | 09-Aug-16 |
| 509631 | HEG | 02-Aug-16 | 511632 | OLYMTFI | 09-Aug-16 |
| 532814 | INDIANB | 02-Aug-16 | 500338 | PRISMCEM | 09-Aug-16 |

| | | | | | |
|--------|------------|-----------|--------|------------|-----------|
| 505520 | ZHEMHOLD | 09-Aug-16 | 526925 | BOBSHELL | 12-Aug-16 |
| 500085 | CHAMBLFERT | 10-Aug-16 | 504671 | CHASBRT | 12-Aug-16 |
| 500144 | FINCABLES | 10-Aug-16 | 531306 | DHPIND | 12-Aug-16 |
| 503639 | INDSOYA | 10-Aug-16 | 523736 | DPL | 12-Aug-16 |
| 538539 | JTAPARIA | 10-Aug-16 | 538961 | GENUSPAPER | 12-Aug-16 |
| 517344 | MINDTECK | 10-Aug-16 | 530263 | GLOBALCA | 12-Aug-16 |
| 531500 | RAJESHEXPO | 10-Aug-16 | 504840 | KAIRA | 12-Aug-16 |
| 538875 | SELLWIN | 10-Aug-16 | 514456 | METROOV | 12-Aug-16 |
| 538975 | SHREESEC | 10-Aug-16 | 524558 | NEULANLAB | 12-Aug-16 |
| 500411 | THERMAX | 10-Aug-16 | 507966 | RASRESOR | 12-Aug-16 |
| 522113 | TIMKEN | 10-Aug-16 | 530125 | SAMRATPH | 12-Aug-16 |
| 538464 | TPROJECT | 10-Aug-16 | 521222 | SANBLUE | 12-Aug-16 |
| 520113 | VESUVIUS | 10-Aug-16 | 530797 | SHGANEL | 12-Aug-16 |
| 530609 | CARNATIN | 11-Aug-16 | 521194 | SILINV | 12-Aug-16 |
| 532180 | DHANBANK | 11-Aug-16 | 506655 | SUDARSCHEM | 12-Aug-16 |
| 533248 | GPPL | 11-Aug-16 | 524378 | JMDEPACKR | 13-Aug-16 |
| 522064 | HONDAPOWER | 11-Aug-16 | 532166 | ALKASEC | 14-Aug-16 |
| 500298 | NATPEROX | 11-Aug-16 | 519191 | JOLYMER | 25-Aug-16 |
| 505800 | RANEHOLDIN | 11-Aug-16 | 535755 | ABFRL | 31-Aug-16 |
| 505010 | AUTOAXLES | 12-Aug-16 | | | |

| Result Earning Q1FY17 | | | | | |
|-----------------------|--------------|--------------|--------------|-------------|------------|
| BSE Code | Company Name | Sales (Cr) | Sales Growth | PAT (Cr.) | PAT Growth |
| 500086 | EXIDEIND | 1957.00 | 9.00 | 191.30 | 23.30 |
| 500002 | ABB | 2087.10 | 8.00 | 92.40 | 35.00 |
| 500093 | CROMPGREAV | 1336.50 | (34.30) | 41.00 | LP |
| 532538 | ULTRACEMCO | 6567.10 | 8.80 | 845.40 | 43.10 |
| 500696 | HINDUNILVR | 8591.40 | 6.00 | 1154.30 | 9.60 |
| 532523 | BIOCON | 961.00 | 16.50 | 114.00 | (9.50) |
| 500674 | SANOFI | 621.30 | 13.00 | 83.00 | 29.30 |
| 532792 | CAIRN | 2120.90 | (19.30) | 549.50 | (34.20) |
| 532819 | MINDTREE | 1341.10 | 36.60 | 161.10 | 16.60 |
| 526299 | MPHASIS | 1449.10 | (3.20) | 196.80 | 13.00 |
| 533179 | PERSISTENT | 701.80 | 40.20 | 74.40 | 10.70 |
| 507685 | WIPRO | 14059.00 | 14.90 | 2073.80 | (5.20) |
| 532215 | AXISBANK | 4591.40 | 13.20 | 1994.00 | 0.80 |
| 500469 | FEDERALBNK | 676.00 | 11.80 | 154.00 | 8.90 |
| 500180 | HDFCBANK | 7807.40 | 22.20 | 3234.10 | 20.00 |
| 500247 | KOTAKBANK | 1888.20 | 18.10 | 734.90 | 287.20 |
| 533228 | BHARATFIN | 182.50 | 56.70 | 103.60 | 69.40 |
| 511288 | GRUH | 120.60 | 15.70 | 62.30 | 23.90 |
| 532720 | M&MFIN | 772.20 | 7.80 | 155.80 | 75.10 |

Economic Calendar

| Country | Monday 18th July 16 | Tuesday 19th July 16 | Wednesday 20th July 16 | Thursday 21th July 16 | Friday 22th July 16 |
|---------------------|--|--|---|---|--|
| US | Philly Fed Manufacturing Index ,Unemployment Claims ,HPI m/m, Flash Manufacturing PMI , Flash Services PMI , CB Leading Index m/m , Natural Gas Storage. | | Flash Manufacturing PMI , Flash Services PMI. | Core Durable Goods Orders m/m , Durable Goods Orders m/m , New Home Sales , S&P/CS Composite-20 HPI y/y , CB Consumer Confidence , New Home Sales . | HPI m/m , Existing Home Sales , Crude Oil Inventories . |
| UK/EURO ZONE | Current Account , Retail Sales m/m , Final CPI y/y , Final Core CPI y/y , ECB Monetary Policy Meeting Accounts . | German PPI m/m , Public Sector Net Borrowing . | French Flash Manufacturing PMI , French Flash Services PMI , Spanish Unemployment Rate , German Constitutional Court Ruling , German Flash Manufacturing PMI , German Flash Services PMI , Flash Manufacturing PMI, Flash Services PMI , Minimum Bid Rate , ECB | GfK Consumer Confidence . | German Final GDP q/q , CBI Realized Sales , Belgian NBB Business Climate . |
| INDIA | | | | | |



(Regn. No. : INP 00004011)

Narnolia Securities Ltd.

Narnolia Research Lab

Stellar IT Park | 5th Floor | Office Space No. 6 | Tower-IIInd Plot No. C-25 | Sector-62 | Noida | Ph : 0120-4215110

Narnolia Securities Ltd.

201 | 2nd Floor | Marble Arch Building | 236B -AJC Bose Road Kolkata-700 020 Ph : 033-40501500
Email : narnolia@narnolia.com website :www.narnolia.com