

KEY LEVELS

Support 1 : 9830
Support 2 : 9777

Resistance 1: 9850
Resistance 2: 10030

Event Today

Today Result

ASHOKLEY, ATUL, CANFINHOME
DHFL, MRPL, PERSISTENT, TATASPONGE

TINPLATE

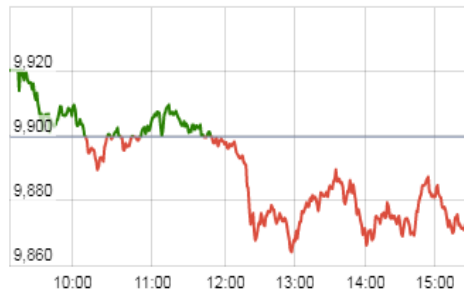
Concall

Bajaj Auto : 10:00 AM
Bajaj Finserv : 11:00 AM
DB Corp : 12:30 PM
Mahindra CIE : 2:30 PM
Indian Bank, Nucleus Soft : 3:00 PM
Can Fin Homes : 3:00 PM
Cupid, Zensar : 4:00 PM
Persistent Sys : 6:00 PM

Dividend

ATLANTA : Rs 0.30/-
BIRLACORPN : Rs 6.5/-
DCMSHRIRAM : Rs 0.80/-
GATI : Rs 0.80/-, GEPIL : Rs 3/-
INDPRUD : Rs 25/-, JENBURPH : Rs 8.1/-
KIRLFER : Rs 1.75/-, MONSANTO : Rs 15/-
PEL : Rs 21/-, POLYCHEM : Rs 2.5/-
SHREECEM : Rs 24/-, SMLT : Rs 0.5/-
VGUARD : Rs 0.7/-
(Exdate : 21.7.2017)

Nifty Intraday Chart



Market Outlook

After opening on a subdued note, nifty rose to make an intraday high of 9922.35 yesterday. However it was unable to maintain at the higher level and fell to make a low of 9863.30. At the end of the day the index closed at 9873.30. It had a net loss of 0.27% over the previous day's close. The midcap index also moved in line with the benchmark index and closed the day after losing 0.29% while the small cap index slightly outshined the benchmark and closed the after gaining 0.3%. On the sectoral front, Metal, FMCG and information Technology were the main catalyst to drag the market lower while Private banking and financial services indices closed in green. The breadth of the market was slightly negative with more declines than advances. Last week saw Nifty inching closer to golden mark of 10000. Globally too things changed for better post Janet Yellen confirming that Federal Reserve will remain "highly accomodative" to the markets by saying that interest rate would not have to rise much further- ' the federal fund would not have to rise all that much further to get a neutral policy stance'. S&P500 (US) made a new high on Friday. Last week Nifty also made a gap between 9830 & 9845 and that would be key support area to be watched this week. Only worrying sign is valuation. Though valuation debate appears to have taken a backseat lately and buy on dip has become consensus view among market participants. And here we must remember that a strong bull market needs skepticism to keep flourishing. Once consensus becomes optimistic, we should surely change the side

Market

Market	Value	% Change
Morning Traded Market		
SGX NIFTY	9,904.00	0.09%
NIKKIE	20116	-0.14%
HANG SENG	26,777.00	0.14%
Yesterday Closing Market		
Sensex	31,904.40	-0.16%
Nifty	9,873.30	-0.27%
DOW	2,16,611.00	-0.13%
NASDAQ	6,390.00	0.08%
CAC	5,199.22	-0.32%
DAX	12,447.25	-0.04%
FTSE	7,487.87	0.76%
EW ALL SHARE	17,933.00	-0.23%

% Change in 1 day

Commodity Price (Yesterday Closing)

Commodity/Currencies	Value	% Change
GOLD	28331.00	0.29%
SILVER	37881.00	0.33%
CRUDEOIL	49.35	0.06%
NATURALGAS	196.70	-0.41%
DOLLAR/RS.	64.42	0.23%
EURO/RS.	74.06	-0.04%
POUND/RS.	83.40	-0.42%

% Change in 1 day

Institutional Turnover

FII			
Investor	Buy(Cr.)	Sale(Cr.)	Net(Cr.)
20-Jul-17	4299	4144	155
Jul-17	63021	61863	1159
2017	712276	688764	23513
DII			
Investor	Buy(Cr.)	Sale(Cr.)	Net(Cr.)
20-Jul-17	3221	3221	0.08
Jul-17	40754	38785	1970
2017	410202	387841	22361

Quote of the Day : "By confining himself to a relatively few, easy-to-understand cases, a reasonably intelligent, informed and diligent person can judge investment risks with a useful degree of accuracy."
Benjamin Graham

FORCEMOT

"BUY"

21th July 2017

Force Motors Limited has strongly positioned itself in the light and small commercial vehicle segment with market share of over 45%. The company has also a technical edge over its peers as it manufactures and assembles engines for luxury car makers like Mercedes and BMW for the Indian market. The company generates about 37% of its revenues from sub-contracting business. Volume growth in 1QFY18 remained sluggish due to BS-IV transition and GST. Major positive for the quarter remained the Auto component business of the company which has posted healthy growth of 9%YoY after two quarters of degrowth. We expect RoE to improve by 400 bps to 14.8% in FY19 based on strong traction in travellers segment, favorable demand outlook for luxury cars and improvement in margins on the back of operating leverage. Currently, the stock is trading at 2.5x FY19E P/B. Considering the immense growth potential going ahead, we maintain 'BUY' on Force Motors with a target price of Rs.4850.

HMVL

"NEUTRAL"

20th July 2017

HMVL's ad revenue growth remained flat led by impact of GST while circulation revenue declined by 2% YoY due to decrease in cover price in UP market. Recent increase in competitive intensity in UP market makes us slightly apprehensive about HMVL growth going forward. The company had approximately Rs 846 crore of cash in its books in the end of FY17 but its dividend payout is very low, approx. 5%. Next trigger for HMVL could be any big acquisition and better capital allocation going forward. Presently stock is trading at 9 times of FY19's expected EPS. Considering increase in competitive intensity in UP market and GST led confusion regarding ad growth, we maintain Neutral view on this stock

*For details, refer to our daily report- *India Equity Analytics*

Top News
Q1FY18 Concall highlights of BAJFINANCE:

>>Customer franchise grew to 21.7 million customers .Up by 26%.

>>48% growth in terms of number of loan book.

>>Out of 42 cr - 24 cr of loan came from consumer business and 18 cr from sale down of infrastructure finance portfolio.

>>Burnt 35 bps of net capital in Q1FY18 and also raised 600 cr of tier II bond.

>>Change in capital raising plan of 4500 cr because once it is approved by the shareholders it is valid for only 12 months.

>>Provisioning cost -24 cr in the Q1FY18 and is expected to be 20 cr in the next 2 quarters.

>>Yield is expected to remain same for the last 5 years.

>>Loan book:- Consumer-43 cr

SME-15cr

Commercial-34 cr

Rural-132 cr

>>Total EMI-9.8 million.

>>Geographical expansion requires opex in the business.

>>Historically Q1 is considered to be stronger quarter.

>>Disbursement growth-38%

>>Biggest opportunity during the Deewali quarter is expected.

>>Additional customer-1.55 million.

>>Cost to income ratio is still elevated due to addition of resources, geographical expansion and technology up gradation.

>>40-45 cr additional provisions were made.

>>Other operating income has not been mentioned due to change in the SEBI rules.

>> NIM growth slower than AUM and expected to be flat further.

>>General provision of 280 cr is not taken into consideration under provision coverage

>>Loan growth is expected to be around 25 million in the next

Mindtree Mgt Guideline : Company grew 2.5 percent on a consolidated basis which is comparable to the rest of the industry at this point of time but more than this, company has very strong deal wins in this quarter.

Mindtree has won deals worth more than USD 260 million in this quarter. Within that more than USD 100 million of deals are in digital which is a lifetime high in the history of the company.

Company has changed its guidance due to performance of acquired entities.

Sterlite Technologies Mgt Guideline : The company eyes a USD 100 million profit target by FY20. Company has set a directional goal to achieve USD 100 million profits in FY20 . The company sees an EBITDA compound annual growth rate (CAGR) of 40-45 percent over the next 3 years. Thirty percent of cable for BharatNet's first phase is supplied by the Sterlite Technologies.

Canara Bank stopped taking bulk deposits. The cost of deposits declined to 5.83 percent versus 6.45 percent YoY. Bank is looking at loan growth of 10-11 percent for FY18. Company expects slippages in agriculture to reduce going ahead.

WIPRO has approved a proposal to buyback up to 34,37,50,000 Equity Shares (Thirty Four Crores Thirty Seven Lakhs and Fifty Thousand Only) of the Company for an aggregate amount not exceeding Rs. 1,10,00,00,00,000/- (Rupees Eleven Thousand Crores Only) (hereinafter referred to as the "Buyback Size"), being 7.06% of the total paid up equity share capital, at Rs. 320/-

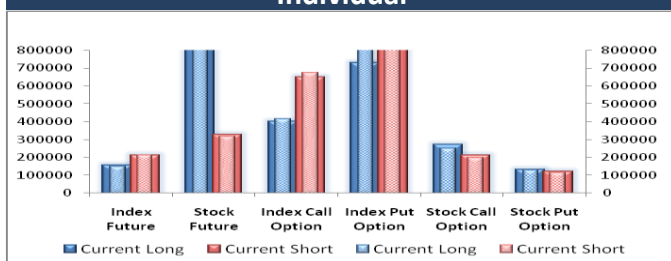
Jet Airways has asked dozens of its junior-ranking pilots to accept 30-50 percent pay cuts, or quit, as it moves to bring down its costs

Block Deal

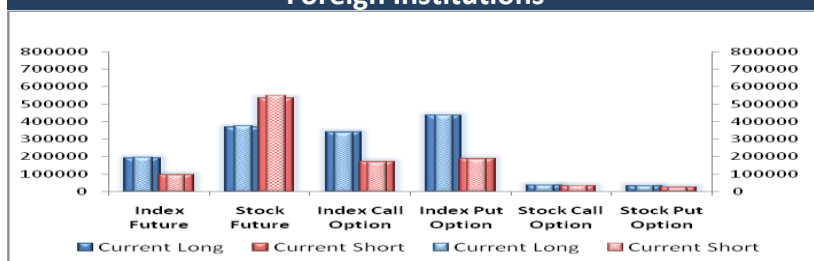
Exchange	Deal Date	Company	Client Name	Deal Type	Quantity	Price
NSE	20-Jul-17	BYKE	WASATCH EMERGING INDIA FUND	BUY	605410	190
NSE	20-Jul-17	GRAPHITE	MORGAN STANLEY (FRANCE) S.A.	BUY	1200000	196.39
NSE	20-Jul-17	HONDAPOWER	RELIANCE MUTUAL FUND	BUY	89800	1350.01
NSE	20-Jul-17	JUSTDIAL	ALPHAGREP COMMODITIES PRIVATE LIMITED	BUY	480718	378.53
NSE	20-Jul-17	JUSTDIAL	SHAASTRA SECURITIES TRADING PRIVATE LIMITED	BUY	612373	377.98
NSE	20-Jul-17	MASTEK	A K G SECURITIES AND CONSULTANCY LTD.	BUY	200915	352.51
NSE	20-Jul-17	MASTEK	GRAVITON RESEARCH CAPITAL LLP	BUY	125778	352.33
NSE	20-Jul-17	MASTEK	MILLENNIUM STOCK BROKING PVT. LTD.	BUY	133071	341.82
NSE	20-Jul-17	MASTEK	N.K. SECURITIES	BUY	237671	351.55
NSE	20-Jul-17	MASTEK	PURITY TRADEMAX LLP	BUY	168400	349.56
NSE	20-Jul-17	MASTEK	VAIBHAV STOCK & DERIVATIVES BROKING PVT. LTD	BUY	339318	349.34
NSE	20-Jul-17	OMKARCHEM	PATEL MANAV NARESHBHAI	BUY	164985	97
NSE	20-Jul-17	SICAGEN	MERCANTILE VENTURES LIMITED	BUY	200000	40.38
NSE	20-Jul-17	SINTEX	ADROIT FINANCIAL SERVICES PRIVATE LIMITED	BUY	8138212	37.11
NSE	20-Jul-17	STERTOOLS	IDFC MUTUAL FUND A/C IDFC SMALL AND MIDCAP	BUY	480861	265
NSE	20-Jul-17	TIMETECHNO	KAP FOR INVT PRO DLT AKTIER ASIEN EX JPN	BUY	4641847	156.1
NSE	20-Jul-17	HONDAPOWER	PRASOON HARSHAD BHATT	SELL	90000	1350.01
NSE	20-Jul-17	JUSTDIAL	ALPHAGREP COMMODITIES PRIVATE LIMITED	SELL	480718	378.82
NSE	20-Jul-17	JUSTDIAL	SHAASTRA SECURITIES TRADING PRIVATE LIMITED	SELL	612373	378.17
NSE	20-Jul-17	MASTEK	A K G SECURITIES AND CONSULTANCY LTD.	SELL	200915	353.1
NSE	20-Jul-17	MASTEK	GRAVITON RESEARCH CAPITAL LLP	SELL	125778	352.68
NSE	20-Jul-17	MASTEK	MILLENNIUM STOCK BROKING PVT. LTD.	SELL	133071	359.14
NSE	20-Jul-17	MASTEK	N.K. SECURITIES	SELL	237671	351.79
NSE	20-Jul-17	MASTEK	PURITY TRADEMAX LLP	SELL	168400	349.2
NSE	20-Jul-17	MASTEK	VAIBHAV STOCK & DERIVATIVES BROKING PVT. LTD	SELL	339318	349.54
NSE	20-Jul-17	OMKARCHEM	PATEL MANAV NARESHBHAI	SELL	164985	100.98
NSE	20-Jul-17	OMKARCHEM	PRAVIN HERLEKAR OMKAR	SELL	225000	97.04
NSE	20-Jul-17	SINTEX	ADROIT FINANCIAL SERVICES PRIVATE LIMITED	SELL	8325891	37.03
NSE	20-Jul-17	STERTOOLS	ANIL AGGARWAL	SELL	475000	265.01
NSE	20-Jul-17	TIMETECHNO	MORGAN STANLEY ASIA (SINGAPORE) PTE	SELL	5466254	156.25

F&O OPEN INTEREST (Number of Contracts)

Individual

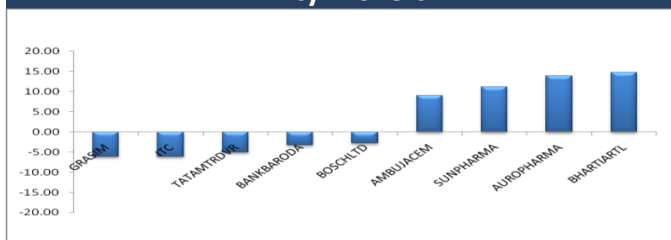


Foreign Institutions



MARKET MOVERS (1 MONTH CHANGE)

Nifty Movers



NSE Sectoral Indices Performance



Result Calendar Q1FY18

Bse Code	Company Name	Date	Bse Code	Company Name	Date
500477	ASHOKLEY	21-Jul-17	538567	GULFOILLUB	24-Jul-17
500027	ATUL	21-Jul-17	500180	HDFCBANK	24-Jul-17
530885	AURUMSOFT	21-Jul-17	540530	HUDCO	24-Jul-17
511196	CANFINHOME	21-Jul-17	532832	IBREALEST	24-Jul-17
501833	CHOWGULSTM	21-Jul-17	535789	IBULHSGFIN	24-Jul-17
511072	DHFL	21-Jul-17	500199	IGPL	24-Jul-17
500089	DICIND	21-Jul-17	534816	INFRATEL	24-Jul-17
531471	DUKEOFS	21-Jul-17	532947	IRB	24-Jul-17
509627	HINDDORROL	21-Jul-17	523405	JMFINANCIL	24-Jul-17
532814	INDIANB	21-Jul-17	535648	JUSTDIAL	24-Jul-17
506528	KELENRG	21-Jul-17	532925	KAUSHALYA	24-Jul-17
517415	LEENEE	21-Jul-17	540005	LTI	24-Jul-17
500262	MAFATLAFIN	21-Jul-17	532720	M&MFIN	24-Jul-17
500109	MRPL	21-Jul-17	532777	NAUKRI	24-Jul-17
517536	ONWARDTEC	21-Jul-17	539332	NAVKARCORP	24-Jul-17
533179	PERSISTENT	21-Jul-17	504112	NELCO	24-Jul-17
539978	QUESS	21-Jul-17	531120	PATELENG	24-Jul-17
505827	SNL	21-Jul-17	530381	PETRONENGG	24-Jul-17
513010	TATASPONGE	21-Jul-17	539354	POLYSPIN	24-Jul-17
504966	TINPLATE	21-Jul-17	519230	RICHIRICH	24-Jul-17
500254	UTTAMVALUE	21-Jul-17	523351	STDSHOE	24-Jul-17
532628	3IINFOTECH	22-Jul-17	500407	SWARAJENG	24-Jul-17
520077	AMTEKAUTO	22-Jul-17	500483	TATACOMM	24-Jul-17
513729	AROGRANITE	22-Jul-17	505400	TEXINFRA	24-Jul-17
532488	DIVISLAB	22-Jul-17	533326	TEXRAIL	24-Jul-17
540376	DMART	22-Jul-17	524129	VINYLINDIA	24-Jul-17
506945	IGLFXPL-B	22-Jul-17	524661	WELCURE	24-Jul-17
532636	IIFL	22-Jul-17	505412	WENDT	24-Jul-17
532209	J&KBANK	22-Jul-17	505537	ZEEL	24-Jul-17
517206	LUMAXIND	22-Jul-17	533287	ZEELEARN	24-Jul-17
531727	MENNPIS	22-Jul-17	500820	ASIANPAINT	25-Jul-17
526891	MKTCREAT	22-Jul-17	532215	AXISBANK	25-Jul-17
514414	OXFORDIN	22-Jul-17	532454	BHARTIARTL	25-Jul-17
532900	SEINV	22-Jul-17	524663	BIBCL	25-Jul-17
524546	SHABCHM	22-Jul-17	512313	BIJLTEX	25-Jul-17
513709	SHILGRAVQ	22-Jul-17	539304	CANOPYFIN	25-Jul-17
523756	SREINFRA	22-Jul-17	531556	CORALFINAC	25-Jul-17
500412	TIRUMALCHM	22-Jul-17	533167	COROENGG	25-Jul-17
512175	VAMA	22-Jul-17	520081	ECSTSTL	25-Jul-17
532401	VIJAYABANK	22-Jul-17	500123	ELANTAS	25-Jul-17
532432	UNITDSPR	23-Jul-17	511716	ESCORTSFIN	25-Jul-17
500425	AMBUJACEM	24-Jul-17	505790	FAGBEARING	25-Jul-17
509438	BENARAS	24-Jul-17	523696	FORTISMLR	25-Jul-17
532511	EXCELCROP	24-Jul-17	538961	GENUSPAPER	25-Jul-17
511676	GICHSGFIN	24-Jul-17	532285	GEOJITFSL	25-Jul-17
531111	GOTHIPL	24-Jul-17	522275	GET&D	25-Jul-17

500660	GLAXO	25-Jul-17	531319	MARUTISE	26-Jul-17
513507	GUJCONT	25-Jul-17	526299	MPHASIS	26-Jul-17
500182	HEROMOTOCO	25-Jul-17	511766	MUTHTFN	26-Jul-17
500500	HINDMOTORS	25-Jul-17	500790	NESTLEIND	26-Jul-17
530055	HRMNYCP	25-Jul-17	535754	ORIENTCEM	26-Jul-17
532960	IBVENTURES	25-Jul-17	532366	PNBGILTS	26-Jul-17
540133	ICICIPRULI	25-Jul-17	531265	PROGRESV	26-Jul-17
540565	INDIGRID	25-Jul-17	532689	PVR	26-Jul-17
502330	IPAPPM	25-Jul-17	532497	RADICO	26-Jul-17
532468	KAMAHOLD	25-Jul-17	522034	SHANTIGEAR	26-Jul-17
500243	KIRLOSIND	25-Jul-17	503811	SIYSIL	26-Jul-17
532889	KPRMILL	25-Jul-17	500405	SUPPETRO	26-Jul-17
500249	KSBPUMPS	25-Jul-17	533158	THANGAMAYL	26-Jul-17
511728	KZLFIN	25-Jul-17	511736	USHDI	26-Jul-17
540115	LTTS	25-Jul-17	513216	UTTAMSTL	26-Jul-17
532313	MAHLIFE	25-Jul-17	532320	VAARAD	26-Jul-17
523144	MEDICAPQ	25-Jul-17	532648	YESBANK	26-Jul-17
506734	MYSORPETRO	25-Jul-17	535755	ABFRL	27-Jul-17
532504	NAVINFUOR	25-Jul-17	505036	ACGL	27-Jul-17
531819	NUWAY	25-Jul-17	590122	ASHIKACR	27-Jul-17
500314	ORIENTHOT	25-Jul-17	512261	BAJGLOB	27-Jul-17
500331	PIDILITIND	25-Jul-17	530999	BALAMINES	27-Jul-17
523315	PURITY	25-Jul-17	526849	BANARBEADS	27-Jul-17
500330	RAYMOND	25-Jul-17	531340	BERVINL	27-Jul-17
512309	ROSETEX	25-Jul-17	532523	BIOCON	27-Jul-17
531219	SHYAMAINFO	25-Jul-17	532485	BLIL	27-Jul-17
513517	STEELCAS	25-Jul-17	511243	CHOLAFIN	27-Jul-17
513434	TATAMETALI	25-Jul-17	500147	CMIFPE	27-Jul-17
538706	ULTRACAB	25-Jul-17	539876	CROMPTON	27-Jul-17
500295	VEDL	25-Jul-17	500124	DRREDDY	27-Jul-17
531234	VICTORYPP	25-Jul-17	509525	EMPIND	27-Jul-17
517498	WEBELSOLAR	25-Jul-17	500086	EXIDEIND	27-Jul-17
504356	ZMULTIPU	25-Jul-17	500150	FOSECOIND	27-Jul-17
539056	ADLABS	26-Jul-17	532296	GLENMARK	27-Jul-17
500215	ATFL	26-Jul-17	532281	HCLTECH	27-Jul-17
533228	BHARATFIN	26-Jul-17	532174	ICICIBANK	27-Jul-17
532974	BIRLAMONEY	26-Jul-17	532822	IDEA	27-Jul-17
507886	DHRUVES	26-Jul-17	532659	IDFC	27-Jul-17
508906	EVERESTIND	26-Jul-17	539437	IDFCBANK	27-Jul-17
500469	FEDERALBNK	26-Jul-17	505726	IFBIND	27-Jul-17
531399	GGAUTO	26-Jul-17	511473	INDBANK	27-Jul-17
531199	GLANCE	26-Jul-17	523465	INDBNK	27-Jul-17
506076	GRINDWELL	26-Jul-17	523638	IPRINGLTD	27-Jul-17
500179	HCL-INSYS	26-Jul-17	500875	ITC	27-Jul-17
500010	HDFC	26-Jul-17	500241	KIRLOSBROS	27-Jul-17
507438	IFBAGRO	26-Jul-17	505283	KIRLPNU	27-Jul-17
500214	IONEXCHANG	26-Jul-17	532500	MARUTI	27-Jul-17
533519	L&T;TFH	26-Jul-17	532892	MOTILALOFS	27-Jul-17
505320	LYNMC	26-Jul-17	500730	NOCIL	27-Jul-17

500672	NOVARTIND	27-Jul-17	526574	ENTRINT	28-Jul-17
532944	ONMOBILE	27-Jul-17	523754	EPCIN	28-Jul-17
501144	PEOPLIN	27-Jul-17	539844	EQUITAS	28-Jul-17
526490	PRATIK	27-Jul-17	500495	ESCORTS	28-Jul-17
532805	REDINGTON	27-Jul-17	531600	GOGIACAP	28-Jul-17
505807	ROLCOEN	27-Jul-17	511355	INDCEMCAP	28-Jul-17
502090	SAGCEM	27-Jul-17	530005	INDIACEM	28-Jul-17
524542	SUKHJITS	27-Jul-17	532150	INDRAMEDCO	28-Jul-17
509930	SUPREMEIND	27-Jul-17	532732	KKCL	28-Jul-17
537259	SUYOG	27-Jul-17	500253	LICHSGFIN	28-Jul-17
531003	SWRNASE	27-Jul-17	500510	LT	28-Jul-17
539268	SYNGENE	27-Jul-17	523248	MACPLASQ	28-Jul-17
532301	TATACOFFEE	27-Jul-17	530243	MANGASOF	28-Jul-17
500408	TATAELXSI	27-Jul-17	532529	NDTV	28-Jul-17
540595	TEJASNET	27-Jul-17	523558	NETWORK	28-Jul-17
505854	TRF	27-Jul-17	516082	NRAGRINDQ	28-Jul-17
530401	VINYOFL	27-Jul-17	511702	PARSHINV	28-Jul-17
533023	WABCOINDIA	27-Jul-17	500329	PENTAGRAPH	28-Jul-17
533227	AHLEAST	28-Jul-17	512099	PUNITCO	28-Jul-17
505216	ALFREDHE	28-Jul-17	500367	RUBFILA	28-Jul-17
531581	ALKADIA	28-Jul-17	507984	SERIND	28-Jul-17
521097	AMARJOTHI	28-Jul-17	531431	SHAKTIPUMP	28-Jul-17
520119	ASAL	28-Jul-17	532638	SHOPERSTOP	28-Jul-17
532493	ASTRAMICRO	28-Jul-17	500472	SKFINDIA	28-Jul-17
500280	CENTENKA	28-Jul-17	524667	SOTL	28-Jul-17
530755	CORNE	28-Jul-17	521178	SRMCL	28-Jul-17
506395	COROMANDEL	28-Jul-17	532348	SUBEX	28-Jul-17
522074	ELGIEQUIP	28-Jul-17			

Result Q1FY18

Bse Code	NSE code	Sales	sales Growth	PAT	PAT Growth
500002	ABB	2361.00	13.86	75.06	(3.05)
532977	BAJAJ-AUTO	5854.00	3.73	923.70	(11.16)
523229	BHARATSE	218.57	18.75	3.52	62.21
532541	NIITTECH	718.20	7.32	71.10	127.16
500188	HINDZINC	5543.00	61.23	1897.00	82.96
533151	DBCORP	601.20	7.16	110.30	6.10
533573	APLLTD	648.00	(10.42)	65.35	(37.01)
500033	BAJAJTEMPO	873.32	17.04	31.18	(39.42)
500165	KANSAINER	1320.00	26.36	140.02	10.69
500247	KOTAKBANK	2245.00	16.98	912.00	23.07
540065	RBLBANK	378.38	54.65	141.02	44.87
507685	WIPRO	13893.00	10.60	2067.30	(7.80)
500325	RELIANCE	90537.00	27.00	10058.00	35.00
504067	ZENSARTECH	743.31	0.49	10.73	(84.44)
500355	RALLIS	348.12	(1.16)	31.01	(10.01)
531209	NUCLEUS	93.69	1.04	22.26	57.65
500033	BAJAJTEMPO	828.12	(7.08)	54.91	(25.29)
532756	MAHINDCIE	464.05	14.81	16.64	9.40

Earning Estimate Q1FY18

DATE	NSE code	Sales	sales Growth	PAT	PAT Growth
20-Jul-17	BAJAJ-AUTO	5233.50	(8.90)	883.20	(9.70)
20-Jul-17	ABB	2383.30	13.40	105.60	36.40
20-Jul-17	APLLTD	763.60	5.00	92.50	(9.30)
20-Jul-17	DBCORP	594.20	4.20	112.00	7.70
20-Jul-17	HINDZINC	4419.50	74.60	1707.90	64.60
20-Jul-17	RELIANCE	57494.40	7.50	8292.40	9.90
20-Jul-17	NIITTECH	686.20	2.50	58.70	87.60
20-Jul-17	WIPRO	13406.20	(1.40)	1856.60	(9.50)
20-Jul-17	ZENSARTECH	761.00	(0.20)	55.80	(26.80)
20-Jul-17	KOTAKBANK	2224.10	15.90	919.00	23.90
20-Jul-17	RBLBANK	374.80	53.20	142.00	45.90
21-Jul-17	ASHOKLEY	4275.50	0.40	206.60	(29.00)
21-Jul-17	MRPL	10612.60	25.90	332.50	(53.70)
21-Jul-17	PERSISTENT	726.90	3.60	75.80	3.50
21-Jul-17	INDIANB	1342.10	8.60	379.20	23.40
21-Jul-17	DHFL	552.10	20.90	249.80	24.00
22-Jul-17	DIVISLAB	974.80	(3.10)	234.30	(22.40)

Economic Calendar

Country	Monday 17th July 17	Tuesday 18th July 17	Wednesday 19th July 17	Thursday 20th July 17	Friday 21th July 17
US	Empire State Manufacturing Index.	Building Permits, Housing Starts , Crude Oil Inventories	Building Permits, Housing Starts , Crude Oil Inventories	Unemployment Claims , Philly Fed Manufacturing Index, CB Leading Index m/m, Natural Gas Storage.	Flash Manufacturing PMI , Flash Services PMI.
UK/EURO ZONE	German WPI m/m , German Buba Monthly Report	CPI y/y, PPI Input m/m, RPI y/y, Final CPI y/y, German ZEW Economic Sentiment, Final Core CPI y/y, ZEW Economic Sentiment.	Manufacturing Sales m/m	German PPI m/m, Current Account, Retail Sales m/m, CBI Industrial Order Expectations, Minimum Bid Rate, ECB Press Conference, Consumer Confidence.	French Flash Manufacturing PMI, French Flash Services PMI, German Flash Manufacturing PMI, German Flash Services PMI, Flash Manufacturing PMI, Flash Services PMI, Public Sector Net Borrowing, Italian Retail Sales m/m.
INDIA					

Narnolia

Advance Strategy - Simple Solutions

Narnolia Securities Ltd

201 | 2nd Floor | Marble Arch Building | 236B-AJC Bose
Road | Kolkata-700 020 , Ph : 033-40501500

email: narnolia@narnolia.com,

website : www.narnolia.com

Risk Disclosure & Disclaimer: This report/message is for the personal information of the authorized recipient and does not construe to be any investment, legal or taxation advice to you. Narnolia Securities Ltd. (Hereinafter referred as NSL) is not soliciting any action based upon it. This report/message is not for public distribution and has been furnished to you solely for your information and should not be reproduced or redistributed to any other person in any form. The report/message is based upon publicly available information, findings of our research wing "East wind" & information that we consider reliable, but we do not represent that it is accurate or complete and we do not provide any express or implied warranty of any kind, and also these are subject to change without notice. The recipients of this report should rely on their own investigations, should use their own judgment for taking any investment decisions keeping in mind that past performance is not necessarily a guide to future performance & that the the value of any investment or income are subject to market and other risks. Further it will be safe to assume that NSL and /or its Group or associate Companies, their Directors, affiliates and/or employees may have interests/ positions, financial or otherwise, individually or otherwise in the recommended/mentioned securities/mutual funds/ model funds and other investment products which may be added or disposed including & other mentioned in this report/message.