

SGX NIFTY : 8303 (75 Pt Down)

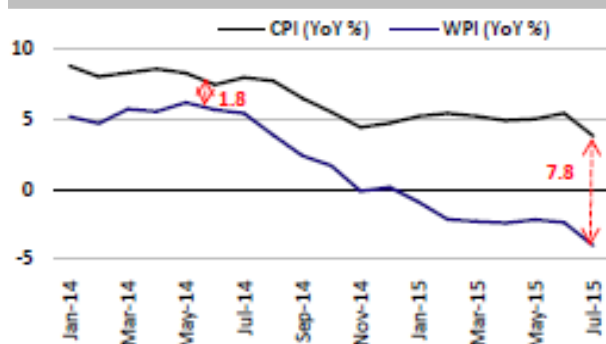
Quote of the Day

"Take the probability of loss times the amount of possible loss from the probability of gain times the amount of possible gain. That is what we're trying to do. It's imperfect, but that's what it's all about."

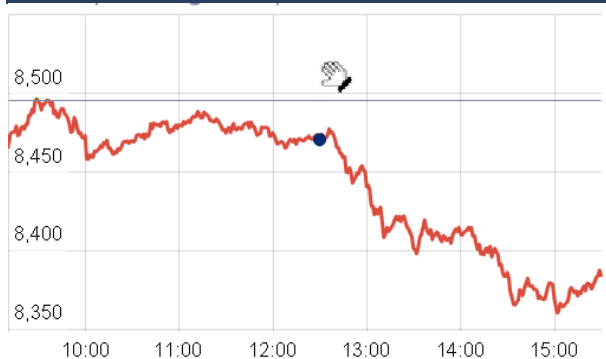
Warren Buffett

Chart of the Day

CPI & WPI Trend



Index Action Nifty (20th Aug 15)



Index

Contents	Page	Coverage
News	2	Update
Economic Calendar	3	Update

Market

Name	Value	Change
Sensex	27,607.82	(323.82)
Nifty	8372.75	(122.40)
DOW	16,990.69	(358.04)
NASDAQ	4,877.49	(141.56)
CAC	4,783.55	(100.55)
DAX	10,432.19	(249.66)
FTSE	6,367.89	(35.56)
NIKKEI	19,663.93	(369.59)
HANG SENG	22,382.62	(375.15)
EW ALL SHARE	14523.58	(228.02)

Instituional Turnover

FII

Investor	Buy(Cr.)	Sale(Cr.)	Net(Cr.)
20th Aug,15	4699.37	5706.63	(1007.26)
Aug,15	56534.73	59974.99	(3440.26)
2015	778026.28	759315.33	18710.95

DII

Investor	Buy(Cr.)	Sale(Cr.)	Net(Cr.)
20th Aug,15	2018.09	1450.22	567.87
Aug,15	23811.41	20932.17	2879.24
2015	300599.65	272017.87	28581.78

Commodity Price

Commodity/Currencies	Value	
GOLD	26801.00	↑
SILVER	36280.00	↑
CRUDEOIL	42.31	↓
COPPER	335.75	↑
NATURALGAS	181.40	↑
DOLLAR/RS.	65.54	↑
EURO/RS.	73.76	↑
POUND/RS.	102.39	↑

Market Snapshot

Top Price Performers

Top Performers 1D	% Change	Top Performers 1W	% Change	Top Performers 1M	% Change
ENERGYDEV	19.86	IMPEXFERRO	61.08	RUSHIL	92.89
NITCO	16.94	ENERGYDEV	49.57	GMBREW	91.62
EMPEESUG	15.73	JUBLINDS	36.05	SANCIA	85.71
OMMETALS	12.43	NITCO	35.12	GREENFIRE	81.58
TUNITEX	12.00	SHRENUJ	32.19	SHRENUJ	80.17

Worst Price Performers

Worst Performers 1D	% Change	Worst Performers 1W	% Change	Worst Performers 1M	% Change
AMTEKAUTO	(28.37)	AMTEKAUTO	(55.70)	AMTEKINDIA	(62.12)
CENTRALBK	(17.39)	JYOTISTRUC	(38.24)	AMTEKAUTO	(61.99)
VIDEOIND	(16.88)	AHMEDFORGE	(29.33)	JYOTISTRUC	(50.63)
BIRLACOT	(16.67)	TRICOM	(29.15)	AHMEDFORGE	(45.58)
VAKRANSOFT	(16.33)	TRF	(25.38)	INDOSOLAR	(39.36)

Top News

- ICICI Bank** said payments banks will compliment the existing universal banks and won't be a threat. She conveyed that the bank has tie-ups with Vodafone and Fino who have received payments banks licences. Bank said entry of new banks will enhance the financial ecosystem. Asked about the possibility of a rate cut, the MD and CEO said banks can't lower deposit rates if small savings rates are high. She added that transmission will happen as policy rates come down. A 75 bps cut in policy rate translates into 40-45 bps cut in cost of funds.
- Century Plyboard Mgt Guideline** : There has been inflow of orders in August. Mgt expects volume growth of 6-7 percent in the third quarter of this year. The company has announced a price hike of 3 to 3.5 percent, effective from September, he said. New catalogue and better distributing network will lead to higher sales in coming quarters. Mgt expects low raw material cost to boost margins in short term period. "Margins will not be sustainable in the long term
- Jyothy Laboratories Mgt Guideline** : Urban and rural demand is stable for soap business, but rural demand for detergent in South India is sluggish. Kamath said low commodity prices, stable inflation number and retail prices are helping the urban demand. Mgt expects volumes to grow by 10 to 12 percent and a 15 percent EBITDA growth in the current year.
- Just Dial 's Search Plus** will be launched in September this year and monetisation from it should start by first half of FY17. Search Plus business will enable customers to carry out transactions such as booking movie tickets, ordering flowers or making doctor appointments from its directory, as well as buy various products.
- Zen Technologies Mgt Guideline** : Company will develop land simulators worth Rs 6000 crore and bid orders of Rs 500 crore. Company is looking for a 24 percent of strategic partnership with a company to increase Zen's overall value to Indian armed forces.
- Reliance Industries Ltd (RIL)** has raised USD 225 million (about Rs 1,468 crore) through overseas bond issue due in 2026, guaranteed by the Export-Import Bank of the United States.
- Hindalco** says that the aluminum industry is in distress due to volatility in the London Metal exchange (LME) and reduced premiums. Fearing competition, the aluminum industry is seeking government's support in the matter. The aluminum industry would like a 5-10 percent hike in the import duty to ensure minimum damages to domestic manufacturers.
- Aurobindo Pharma** has received approval from the US health regulator to market generic version of Prilosec delayed-release capsules, used to treat ulcer, in the American market. The company has received final approval from the US Food and Drug Administration (USFDA) to manufacture and market Omeprazole delayed-release capsules in the strengths of 10mg, 20mg and 40mg.
- U.K retail** sales increased by a seasonally adjusted 0.1% last month, disappointing forecasts for a gain of 0.4%.
- U.S. Department of Labor** said the number of individuals filing for initial jobless benefits in the week ending August 15 rose by 4,000 to a seasonally adjusted 277,000 from the previous week's total of 273,000. Analysts had expected initial jobless claims to fall by 1,000 to 272,000 last week.
- Brazilian Unemployment Rate** rose to a seasonally adjusted 7.5%, from 6.9% in the preceding month. Analysts had expected Brazilian Unemployment Rate to rise to 7.1% last month.
- CBI industrial trends orders** rose to -1, from -10 in the preceding month. Analysts had expected CBI industrial trends orders to remain unchanged at -10 last month.
- Canadian wholesale sales** rose to a seasonally adjusted 1.3%, from -0.9% in the preceding month whose figure was revised up from -1.0%. Analysts had expected Canadian wholesale sales to rise 1.0% last month.
- Swedish Unemployment Rate** fell to 6.5%, from 8.5% in the preceding month. Analysts had expected Swedish Unemployment Rate to fall to 6.9% last month.

Economic Calendar

Country	Monday 17th Aug 15	Tuesday 18th Aug 15	Wednesday 19th Aug 15	Thursday 20th Aug 15	Friday 21th Aug 15
US	NAHB Housing Market Index , Empire State Manufacturing Index	Building Permits ,Housing Starts .	CPI m/m , Core CPI m/m , Crude Oil Inventories , FOMC Meeting Minutes .	Unemployment Claims , Flash Manufacturing PMI , Philly Fed Manufacturing Index , Existing Home Sales , CB Leading Index m/m , Natural Gas Storage .	Flash Services PMI .
UK/EURO ZONE	Trade Balance , German Buba Monthly Report .	CPI y/y ,PPI Input m/m ,RPI y/y , Core CPI y/y , HPI y/y .	Current Account , Consumer Confidence ,	French Flash Manufacturing PMI ,French Flash Services PMI , German Flash Manufacturing PMI , German Flash Services PMI , Flash Manufacturing PMI , Flash Services PMI , Retail Sales m/m , Public Sector Net Borrowing .	
INDIA					



(Regn. No. : INP 000004011)

Narnolia Securities Ltd.

Narnolia Research Lab

Stellar IT Park | 5th Floor | Office Space No. 6 | Tower-IIInd Plot No. C-25 | Sector-62 | Noida |
Ph : 0120-4215110

Central Strategy Desk - Kolkata

124 | 1st Floor | 7/1 Lords Sinha Road | Kolkata - 71
Ph : 033-22821500 | M : 93347 14418, 98302 69810