

SGX NIFTY : 7903 (65 Pt Down)

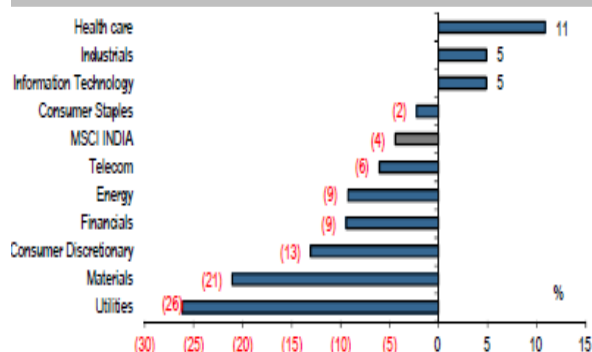
Quote of the Day

"Charlie and I decided long ago that in an investment lifetime it's too hard to make hundreds of smart decisions. That judgment became ever more compelling as Berkshire's capital mushroomed and the universe of investments that could significantly affect our results shrank dramatically. Therefore, we adopted a strategy that required our being smart - and not too smart at that - only a very few times. Indeed, we'll now settle for one good idea a year."

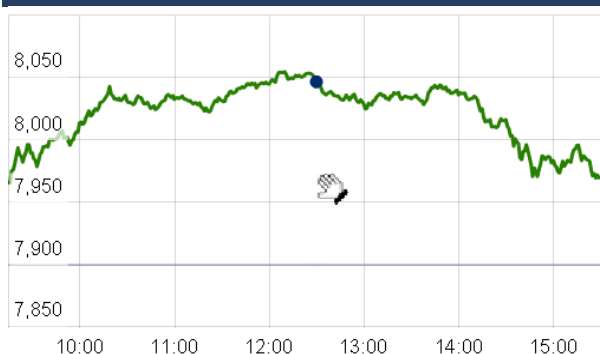
Warren Buffett

Chart of the Day

MSCI India Sectoral Performance



Index Action Nifty (17th Sept 15)



Index

Contents	Page	Coverage
News	2	Update
Economic Calendar	3	Update

Market

Name	Value	Change
Sensex	26,218.91	254.94
Nifty	7981.90	82.75
DOW	16,384.79	(289.95)
NASDAQ	4,827.23	(66.72)
CAC	4,535.85	(119.29)
DAX	9,916.16	(313.12)
FTSE	6,104.11	(82.88)
NIKKIE	18,070.21	(362.06)
HANG SENG	21,639.08	(281.75)
EW ALL SHARE	13739.2	145.63

Instituional Turnover

FII

Investor	Buy(Cr.)	Sale(Cr.)	Net(Cr.)
17-Sep-15	10656.63	10013.12	643.51
Sept,15	44469.83	50553.64	(6083.81)
2015	866427.18	869683.95	(3256.77)

DII

Investor	Buy(Cr.)	Sale(Cr.)	Net(Cr.)
17-Sep-15	1918.39	1503.30	415.09
Sept,15	20661.44	14608.77	6052.67
2015	346959.76	298956.13	48003.63

Commodity Price

Commodity/Currencies	Value	
GOLD	26469.00	↑
SILVER	36077.00	↑
CRUDEOIL	45.18	↓
COPPER	350.55	↓
NATURALGAS	172.20	↑
DOLLAR/RS.	65.67	↓
EURO/RS.	74.55	↑
POUND/RS.	102.40	↑

Market Snapshot

Top Price Performers

Top Performers 1D	% Change	Top Performers 1W	% Change	Top Performers 1M	% Change
KSOILS	20.00	REIAGROLTD	77.78	REIAGROLTD	77.78
RUSHIL	19.96	AMTEKAUTO	59.21	JINDWORLD	55.64
JSL	19.73	KSOILS	50.00	ESTER	48.29
MAHLIFE	19.25	FARMAXIND	38.46	ORISSASP	48.06
AEGISCHEM	18.57	ENERGYDEV	38.31	JRG	46.96

Worst Price Performers

Worst Performers 1D	% Change	Worst Performers 1W	% Change	Worst Performers 1M	% Change
SKSMICRO	(15.47)	AEGISCHEM	(87.84)	AEGISCHEM	(88.20)
GLOBALCA	(13.87)	GOKUL	(30.67)	AMTEKINDIA	(61.84)
ARIHANT	(13.50)	JMDTELEFILM	(27.18)	DECNGOLD	(54.04)
GOLDTECH	(10.00)	OUTCTYTRVL	(22.39)	ROLATAN	(46.62)
CURATECH	(9.29)	AMTEKINDIA	(22.30)	JMTAUTOLTD	(38.41)

Top News

• Fund Action :

Tata Motors : Citigroup Global Markets Mauritius Private Limited bought 20,824,918 shares of Tata Motors at Rs 324.50 on the BSE. **
SML Isuzu : Axis Mutual Fund sold 210,406 shares of SML Isuzu at Rs 1,125.11 on the BSE.

** **IIFL Holdings** : Rajasthan Global Securities Ltd bought 13,85,587 shares of IIFL Holdings at Rs 183.65 on the NSE.

** **Future Cons** : BNP Paribas Arbitrage sold 48,000,000 shares of Future Consumer at Rs 13.95 on the NSE.

** **Cyient** : The Vanguard Group INC A/C Vanguard Emerg. Mkts Stock INDE bought 710,073 shares of Cyient at Rs 589.02 on the NSE.

** **Aban Offshore** : Wisdomtree India Investment Portfolio INC bought 533,175 shares of Aban Offshore at Rs 240.26 on the NSE.

** **Arvind Infra** : Wisdomtree India Investment Portfolio INC sold 138,571 shares of Arvind Infra at Rs 47.75 on the NSE.

• **CARE Ratings** has revised the ratings assigned to the Essel Propack 's long term bank facilities and the non-convertible debentures from CARE A (Single A) to CARE AA- (Double A Minus), and short term bank facilities from CARE A2+ (A Two Plus) to CARE A1+ (A One Plus).

• **NTPC** is likely to exceed the thermal capacity addition target of 11,920 MW set by the government for the 12th five year plan. The company has made the single largest thermal capacity addition (8,445 MW) during the 12th Plan so far and is well on course to exceed the target of 11,920 MW set by government

• **Rural Electrification Corp (REC)** said that its shareholders have approved the proposal to raise up to Rs 42,000 crore through issuance of bonds or debentures on private placement basis.

• **Power Grid Corp** for developing power transmission lines connecting solar parks and Inter-State Transmission System (ISTS), which has led to some private companies crying foul that competitive bidding route should have been followed.

• **Asian Paints** is proposing to set up a paint manufacturing plant at Mysuru district, in the state of Karnataka. The ultimate capacity of 6 lakh KL p.a. would be achieved in a phased manner at an approximate cost of Rs. 2300 crore at the current prices. This is subject to due diligence and necessary regulatory and other approvals.

• **Sun Pharmaceutical Industries Ltd** is selling erstwhile Ranbaxy 's two divisions in central nervous system (CNS) segment in India to Strides Arcolab for Rs 165 crore. Sun Pharma and Strides have entered into a definitive agreement related to erstwhile Ranbaxy's 'Solus' and 'Solus Care' divisions operating in the central nervous system (CNS) segment in India

• **IDFC** has got regulatory approval to utilise Rs 2,500 crore non-distributable reserves for provisions against bad loans as part of exercise to clean its book before venturing into universal banking.

• U.S. CB Leading Index rose to a seasonally adjusted annual rate of 0.1%, from -0.2% in the preceding month.

• **Euro zone current account** fell to a seasonally adjusted 22.6B, from 24.9B in the preceding month whose figure was revised down from 25.4B. Analysts had expected Euro zone current account to fall to 21.3B last month.

• **U.S. Natural Gas Storage** rose to a seasonally adjusted annual rate of 73B, from 68B in the preceding month. Analysts had expected U.S. Natural Gas Storage to rise 73B last month.

• **Central Statistical Office said that Polish Industrial Output** rose to a seasonally adjusted 5.3%, from 3.8% in the preceding month. Analysts had expected Polish Industrial Output to rise to 6.1% last month.

• **Census Bureau said that the number of building permits issued** rose to 1.170M, from 1.130M in the preceding month . Analysts had expected the number of building permits issued to rise to 1.160M last month.

Economic Calendar

Country	Monday 21th Sept 15	Tuesday 22th Sept 15	Wednesday 23th Sept 15	Thursday 24th Sept 15	Friday 25th Sept 15
US	Existing Home Sales .	HPI m/m , Flash Manufacturing PMI , Richmond Manufacturing Index .	Crude Oil Inventories .	Core Durable Goods Orders m/m , Unemployment Claims , Durable Goods Orders m/m , Flash Services PMI , New Home Sales .	Final GDP q/q , Final GDP Price Index q/q , Revised UoM Consumer Sentiment , Revised UoM Inflation Expectations .
UK/EURO ZONE	Wholesale Sales m/m .	French Flash Manufacturing PMI , French Flash Services PMI , German Flash Manufacturing PMI , German Flash Services PMI , Flash Manufacturing PMI , Flash Services PMI , Public Sector Net Borrowing , Inflation Report Hearings .	German Ifo Business Climate , CBI Realized Sales , Core Retail Sales m/m .	Targeted LTRO , Italian 10-y Bond Auction , Italian Retail Sales m/m , Nationwide HPI m/m .	M3 Money Supply y/y , Private Loans y/y , Index of Services 3m/3m , GfK German Consumer Climate .
INDIA					

Narnolia Securities Ltd.

Narnolia Research Lab

Stellar IT Park | 5th Floor | Office Space No. 6 | Tower-I/nd Plot No. C-25 | Sector-62 | Noida
| Ph : 0120-4215110

Central Strategy Desk - Kolkata

124 | 1st Floor | 7/1 Lords Sinha Road | Kolkata - 71
Ph : 033-22821500 | M : 93347 14418, 98302 69810