

SGX NIFTY : 8705 (1.50 Pt Down)

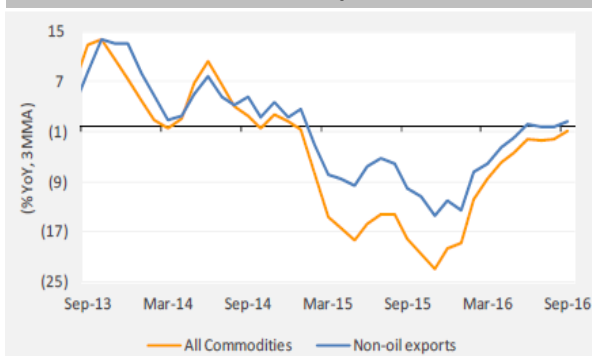
Quote of the Day

"We both (He and Warren Buffett) insist on a lot of time being available almost every day to just sit and think. That is very uncommon in American business. We read and think. So Warren and I do more reading and thinking and less doing than most people in business. We do that because we like that kind of a life."

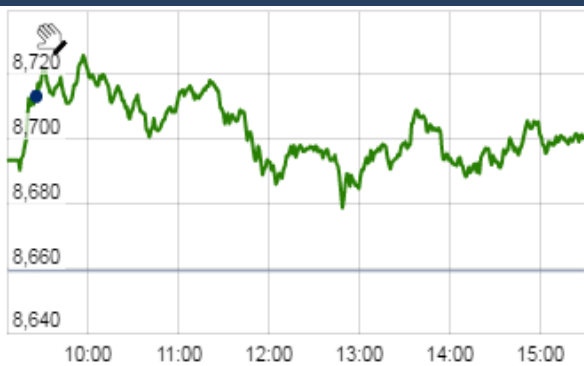
Charles Munger

Chart of the Day

Oil & Non Oil Export Trend



Index Action Nifty (20th Oct 16)



Index

Contents	Page	Coverage
News	2	Update
Economic Calendar	3	Update

Market

Name	Value	Change
Sensex	28,129.84	145.47
Nifty	8699.40	40.30
DOW	18,268.50	(12.53)
NASDAQ	5,241.83	(4.58)
CAC	4,540.12	19.82
DAX	10,701.39	55.71
FTSE	7,026.90	4.98
NIKKEI	17,260.33	24.83
HANG SENG	23,374.40	69.43
EW ALL SHARE	15742.80	59.82

Instituional Turnover

FII

Investor	Buy(Cr.)	Sale(Cr.)	Net(Cr.)
20-Oct-16	2751.57	2744.27	7.30
Oct,16	48217.41	50187.17	(1969.76)
2016	836685.63	813802.50	22883.13

DII

Investor	Buy(Cr.)	Sale(Cr.)	Net(Cr.)
20-Oct-16	2480.70	1897.48	583.22
Oct,16	29877.12	25628.82	4248.30
2016	365022.47	361634.01	3388.46

Commodity Price

Commodity/Currencies	Value	Change
GOLD	29910.00	↑
SILVER	41996.00	↓
CRUDEOIL	49.21	↑
COPPER	311.00	↓
NATURALGAS	210.00	↓
DOLLAR/RS.	66.81	↑
EURO/RS.	72.00	↓
POUND/RS.	81.33	↓

Market Snapshot

Top Price Performers

Top Performers 1D	% Change	Top Performers 1W	% Change	Top Performers 1M	% Change
NTCIND	20.00	CALSREF	50.00	REMIMETAL	98.75
CAPPL	19.99	DIAPOWER	44.70	PRIMESECU	97.47
MANUGRAPH	19.94	JAYAGROGN	38.69	CALSREF	87.50
ARIHANT	19.93	DCM	38.04	JSL	87.25
SYNCOM	19.92	HINDDORROL	34.31	PRITI	84.62

Worst Performers 1D	% Change	Worst Performers 1W	% Change	Worst Performers 1M	% Change
KAJARIACER	(9.08)	SUPREMETEX	(18.26)	BHARTISHIP	(37.46)
ANTFRIBEAR	(8.62)	RAINBOWPAP	(18.23)	MANDHANA	(30.57)
FARMAXIND	(8.33)	GTLINFRA	(18.21)	KANANIIND	(29.29)
PRADIP	(7.86)	MAVENS BIO	(14.86)	MONOT	(24.70)
GARDENSILK	(7.52)	XLENERGY	(13.57)	GTOFFSHORE	(24.02)

Top News

- **Ashok Leyland** bags Rs 1,140 cr order from Tanzania

>>Ashok Leyland bagged order worth USD 170 million (about Rs 1,140 crore) from Tanzania to supply vehicles, gensets and spares, among others.

>>The company had concluded the supply of 773 vehicles to Tanzania under Line of Credit from the Indian government.

>>The company is executing another order for supply of 777 vehicles to the Ministry of Home Affairs in Tanzania

- **Kajaria Mgt Guideline** : The market was bad in the first two months of the second quarter but the retail market has improved from September onward . despite missing street estimates the company has not lost its market share and seen a volume growth of 3 percent in Q2 despite the industry growth being negative.

- **The NCC-BGR consortium** was recently awarded the Pachhara North Coal Block MDO project. NCC will hold 51 percent stake in the special purpose vehicle (SPV) while the remaining will be held by BGR Mining and Infra.

> NCC, says the expected net profit margin from the SPV will be around 5-6 percent.

> The project will require machinery worth Rs 600 crore

- **Mgt Int : SBIN**

Security breach happened at ATMs of other service providers: SBI

>>SBI has cancelled 6,25,000 cards as a precautionary measure.

>>The customers whose cards have been cancelled will get new cards.

>>The banks could counter claim the loss, which is yet to be decided.

- **Mgt Int : KPIT**

>>Expect to achieve 15-16% margin in next few quarters.

>>Automotive will continue to do well (Seeing traction there).

>>Seeing some growth coming back in Energy utilities segment.

>>Enough opportunity to grow in Europe.

>>Pipeline looks strong.

- **Wipro** may have acquired US firm Appirio for over \$400m . Wipro is learnt to have acquired US-based cloudconsultancy firm Appirio. The size of the acquisition could be in the range of \$400-500 million (Rs 2,700-3,350 crore), making it one of Wipro's biggest acquisitions.

- **Titan** has entered into a strategic partnership with Swiss watch maker Raymond Weil. The partnership is to expand its luxury brands segment by adding another chain . the consumer sentiments have been okay in last few months. The company is seeing growth in demand across its all brands. The mood is pretty positive and we are also unveiling new collections across all our brands within Titan and Fastrack . The company is banking on the demand uptick for growth.

- **Maruti Suzuki** has launched a new car personalisation facility, called iCreate. It's currently available to customers who own the Vitara Brezza. The company says that iCreate gives customers the freedom to personalise the car according to their tastes and preferences.

- **Philly Fed manufacturing index** rose to a seasonally adjusted 9.7, from 12.8 in the preceding month. Analysts had expected Philly Fed manufacturing index to rise 5.3 last month.

- **Euro zone current account** rose to a seasonally adjusted 29.7B, from 27.7B in the preceding month whose figure was revised up from 21.0B. Analysts had expected Euro zone current account to rise to 24.3B last month.

- **Swedish Unemployment Rate** fell to 6.1%, from 6.6% in the preceding month. Analysts had expected Swedish Unemployment Rate to fall to 6.4% last month.

- **Dutch Unemployment Rate** fell to a seasonally adjusted 5.7%, from 5.8% in the preceding month. Analysts had expected Dutch Unemployment Rate to remain unchanged at 5.8% last month.

Result Calendar Q2FY17

BSE Code	Company Name	Date	BSE Code	Company Name	Date
532628	3IINFOTECH	21-Oct-16	532610	DWARKESH	22-Oct-16
500410	ACC	21-Oct-16	533315	INOVSYNTH	22-Oct-16
500710	AKZOINDIA	21-Oct-16	524330	JAYAGROGN	22-Oct-16
531581	ALKADIA	21-Oct-16	524731	JENBURPH	22-Oct-16
532259	APARINDS	21-Oct-16	522259	KALINDEE	22-Oct-16
522134	ARTSONEN	21-Oct-16	533519	L&T;TFH	22-Oct-16
500027	ATUL	21-Oct-16	517415	LEENEE	22-Oct-16
531310	AVAILFC	21-Oct-16	500250	LGBBROSLTD	22-Oct-16
530803	BHAGIL	21-Oct-16	533007	LGBFORGE	22-Oct-16
504648	BOMBWIR	21-Oct-16	539275	MSL	22-Oct-16
532792	CAIRN	21-Oct-16	533179	PERSISTENT	22-Oct-16
519477	CIANAGRO	21-Oct-16	526490	PRATIK	22-Oct-16
512018	CNIRESLTD	21-Oct-16	511640	SANGHCO	22-Oct-16
539844	EQUITAS	21-Oct-16	532900	SEINV	22-Oct-16
508906	EVERESTIND	21-Oct-16	531219	SHYAMAINFO	22-Oct-16
500171	GHCL	21-Oct-16	530445	SUMERUIND	22-Oct-16
505255	GMM	21-Oct-16	526525	WWLEATH	22-Oct-16
514370	HARPOLY	21-Oct-16	516030	YASHPPR	22-Oct-16
535789	IBULHSGFIN	21-Oct-16	504356	ZMULTIPU	22-Oct-16
500214	IONEXCHANG	21-Oct-16	532410	TRANSCOR	23-Oct-16
532642	JSWHL	21-Oct-16	512599	ADANIENT	24-Oct-16
533302	KICL	21-Oct-16	533096	ADANIPOWER	24-Oct-16
533293	KIRLOSENG	21-Oct-16	539254	ADANITRANS	24-Oct-16
500235	KSL	21-Oct-16	530117	ADIFINCHM	24-Oct-16
539992	LLOYDSTEEL	21-Oct-16	523120	ADORMUL	24-Oct-16
511000	MADHUSE	21-Oct-16	517041	ADORWELD	24-Oct-16
523828	MENONBE	21-Oct-16	513349	AJMERA	24-Oct-16
532819	MINDTREE	21-Oct-16	532215	AXISBANK	24-Oct-16
533273	OBEROIRLTY	21-Oct-16	530999	BALAMINES	24-Oct-16
517536	ONWARDTEC	21-Oct-16	511501	BHARAT	24-Oct-16
531254	OPTIFIN	21-Oct-16	532974	BIRLAMONEY	24-Oct-16
532988	RANEENGINE	21-Oct-16	511505	CAPITALT	24-Oct-16
532983	RPGLIFE	21-Oct-16	506365	CHEMOPH	24-Oct-16
501061	SBBJ	21-Oct-16	533167	COROENGG	24-Oct-16
503229	SIMPLXREA	21-Oct-16	532764	GEECEE	24-Oct-16
500472	SKFINDIA	21-Oct-16	526797	GREENPLY	24-Oct-16
513010	TATASPONGE	21-Oct-16	500690	GSFC	24-Oct-16
521064	TRIDENT	21-Oct-16	517372	GUJINTRX	24-Oct-16
505978	TRITONV	21-Oct-16	532822	IDEA	24-Oct-16
506690	UNICHEMLAB	21-Oct-16	533047	IMFA	24-Oct-16
532953	VGUARD	21-Oct-16	509162	INDAG	24-Oct-16
507685	WIPRO	21-Oct-16	534816	INFRATEL	24-Oct-16
533287	ZEELEARN	21-Oct-16	511609	ISLCONSUL	24-Oct-16
534742	ZUARI	21-Oct-16	523398	JCHAC	24-Oct-16
500780	ZUARIGLOB	21-Oct-16	534659	JOINTECAED	24-Oct-16
539662	BFLDEV	22-Oct-16	530701	KDJHRL	24-Oct-16
539527	CREATIVE	22-Oct-16	524019	KINGFA	24-Oct-16

500245	KIRLFER	24-Oct-16	538568	FRUTION	25-Oct-16
532889	KPRMILL	24-Oct-16	513108	GANDHITUBE	25-Oct-16
512455	LLOYDSME	24-Oct-16	532312	GEOMETRIC	25-Oct-16
532756	MAHINDCIE	24-Oct-16	500174	GLFL	25-Oct-16
531319	MARUTISE	24-Oct-16	505576	GOLDCORP	25-Oct-16
511766	MUTHTFN	24-Oct-16	532482	GRANULES	25-Oct-16
531289	NATFIT	24-Oct-16	518029	GSCLCEMENT	25-Oct-16
532504	NAVINFLUOR	24-Oct-16	500180	HDFCBANK	25-Oct-16
500162	PARRYSUGAR	24-Oct-16	532129	HEXAWARE	25-Oct-16
537839	PHOENIXTN	24-Oct-16	540133	ICICIPRULI	25-Oct-16
500355	RALLIS	24-Oct-16	539437	IDFCBANK	25-Oct-16
500111	RELCAPITAL	24-Oct-16	507438	IFBAGRO	25-Oct-16
532661	RML	24-Oct-16	504080	JSLINDL	25-Oct-16
532785	RUCHIRA	24-Oct-16	532926	JYOTHYLAB	25-Oct-16
502175	SAURASHCEM	24-Oct-16	523207	KOKUYOCLN	25-Oct-16
524336	SHHARICH	24-Oct-16	500247	KOTAKBANK	25-Oct-16
505827	SNL	24-Oct-16	511138	KOTHARIFIN	25-Oct-16
524727	SPANDIAQ	24-Oct-16	500249	KSBPUMPS	25-Oct-16
533110	SPSL	24-Oct-16	511728	KZLFIN	25-Oct-16
500407	SWARAJENG	24-Oct-16	532720	M&MFIN	25-Oct-16
513434	TATAMETALI	24-Oct-16	515059	MADHUDIN	25-Oct-16
539871	THYROCCARE	24-Oct-16	500264	MAFATIND	25-Oct-16
531390	UPSURGE	24-Oct-16	534091	MCX	25-Oct-16
512205	VATSAEDU	24-Oct-16	532865	MEGH	25-Oct-16
505412	WENDT	24-Oct-16	532621	MORARJEE	25-Oct-16
532921	ADANIPTS	25-Oct-16	532440	MPSLTD	25-Oct-16
532056	ADIEXRE	25-Oct-16	532200	MYSOREBANK	25-Oct-16
533573	APLLTD	25-Oct-16	539015	ORTEL	25-Oct-16
500101	ARVIND	25-Oct-16	523642	PIIND	25-Oct-16
500820	ASIANPAINT	25-Oct-16	531273	RADHEDE	25-Oct-16
522005	AUSTENG	25-Oct-16	532987	RBL	25-Oct-16
522004	BATLIBOI	25-Oct-16	512309	ROSETEX	25-Oct-16
503960	BBL	25-Oct-16	523025	SAFARIND	25-Oct-16
532454	BHARTIARTL	25-Oct-16	531431	SHAKTIPUMP	25-Oct-16
512313	BIJLTEX	25-Oct-16	538685	SHEMAROO	25-Oct-16
538786	CIL	25-Oct-16	511218	SRTRANSFIN	25-Oct-16
531556	CORALFINAC	25-Oct-16	513517	STEELCAS	25-Oct-16
539876	CROMPTON	25-Oct-16	506003	SUDAI	25-Oct-16
532099	DATABASE	25-Oct-16	517385	SYMPHONY	25-Oct-16
532760	DEEPIIND	25-Oct-16	501301	TATAINVEST	25-Oct-16
532848	DELTACORP	25-Oct-16	539488	TFL	25-Oct-16
507886	DHRUVES	25-Oct-16	504966	TINPLATE	25-Oct-16
500124	DRREDDY	25-Oct-16	532410	TRANSCOR	25-Oct-16
500123	ELANTAS	25-Oct-16	509055	VISAKAIND	25-Oct-16
524768	EMMESSA	25-Oct-16	532893	VTMLTD	25-Oct-16
533477	ENKEIWHEL	25-Oct-16	532144	WELCORP	25-Oct-16
500246	ENVAIREL	25-Oct-16	511601	YASHMGM	25-Oct-16
500469	FEDERALBNK	25-Oct-16	505537	ZEEL	25-Oct-16
526227	FILATEX	25-Oct-16	512587	ZODJRD MKJ	25-Oct-16

531335	ZYDUSWELL	25-Oct-16	532366	PNBGILTS	26-Oct-16
532331	AJANTPHARM	26-Oct-16	514223	RAMGOPOLY	26-Oct-16
521097	AMARJOTHI	26-Oct-16	537840	RAUNAQEPC	26-Oct-16
500012	ANDHRAPET	26-Oct-16	532915	RELIGARE	26-Oct-16
500016	ARUNAHTEL	26-Oct-16	532735	RSYSTEMINT	26-Oct-16
539301	ARVINFRA	26-Oct-16	506642	SADHNANIQ	26-Oct-16
526847	ASHSI	26-Oct-16	502090	SAGCEM	26-Oct-16
532888	ASIANILES	26-Oct-16	532191	SBT	26-Oct-16
508933	AYMSYNTEX	26-Oct-16	522034	SHANTIGEAR	26-Oct-16
524663	BIBCL	26-Oct-16	531201	SHILCTECH	26-Oct-16
532290	BLBLIMITED	26-Oct-16	532143	SKMEGGPROD	26-Oct-16
506197	BLISSGVS	26-Oct-16	532419	SMARTLINK	26-Oct-16
500074	BPL	26-Oct-16	531548	SOMANYCERA	26-Oct-16
532321	CADILAHC	26-Oct-16	531359	SRAMSET	26-Oct-16
532483	CANBK	26-Oct-16	512527	SUPER	26-Oct-16
506395	COROMANDEL	26-Oct-16	532276	SYNDIBANK	26-Oct-16
500480	CUMMINSIND	26-Oct-16	500420	TORNTPHARM	26-Oct-16
500096	DABUR	26-Oct-16	502281	TRIVENIGQ	26-Oct-16
533309	DALMIABHA	26-Oct-16	511371	VATCO	26-Oct-16
506401	DEEPAKNI	26-Oct-16	538382	WESTLEIRES	26-Oct-16
526783	DRAGARWQ	26-Oct-16	501386	ZSWASTSA	26-Oct-16
533208	EMAMIPAP	26-Oct-16	500002	ABB	27-Oct-16
532511	EXCELCROP	26-Oct-16	531161	ABMKNO	27-Oct-16
500086	EXIDEIND	26-Oct-16	539056	ADLABS	27-Oct-16
502865	FORBESCO	26-Oct-16	537292	AGRITECH	27-Oct-16
508486	HAWKINCOOK	26-Oct-16	509367	APTANN	27-Oct-16
500010	HDFC	26-Oct-16	505029	ATLASCYCLE	27-Oct-16
500182	HEROMOTOCO	26-Oct-16	532978	BAJAJFINSV	27-Oct-16
500189	HINDUJAVEN	26-Oct-16	500034	BAJFINANCE	27-Oct-16
500696	HINDUNILVR	26-Oct-16	526849	BANARBEADS	27-Oct-16
504741	INDIANHUME	26-Oct-16	500049	BEL	27-Oct-16
532612	INDOCO	26-Oct-16	505688	BHARATGEAR	27-Oct-16
532717	INDOTECH	26-Oct-16	500059	BINANIIND	27-Oct-16
504786	INVPRECQ	26-Oct-16	535620	BINNYMILLS	27-Oct-16
502330	IPAPPM	26-Oct-16	500069	BNKCAP	27-Oct-16
500875	ITC	26-Oct-16	533108	BTTL	27-Oct-16
500380	JKLAKSHMI	26-Oct-16	500870	CASTROLIND	27-Oct-16
533148	JSWENERGY	26-Oct-16	511243	CHOLAFIN	27-Oct-16
533155	JUBLFOOD	26-Oct-16	531067	CONTILI	27-Oct-16
535648	JUSTDIAL	26-Oct-16	530843	CUPID	27-Oct-16
500241	KIRLOSBROS	26-Oct-16	532173	CYBERTECH	27-Oct-16
500252	LAXMIMACH	26-Oct-16	500097	DALMIASUG	27-Oct-16
500266	MAHSCOOTER	26-Oct-16	523367	DCMSHRIRAM	27-Oct-16
505324	MANUGRAPH	26-Oct-16	590031	DENORA	27-Oct-16
503772	MODWOOL	26-Oct-16	532526	DISHMAN	27-Oct-16
520043	MUNJALSHOW	26-Oct-16	531471	DUKEOFS	27-Oct-16
530697	NEELKATEC	26-Oct-16	531162	EMAMILTD	27-Oct-16
502165	OCL	26-Oct-16	526574	ENTRINT	27-Oct-16
500314	ORIENTHOT	26-Oct-16	523754	EPCIN	27-Oct-16

500495	ESCORTS	27-Oct-16	526576	TECHIN	27-Oct-16
500033	FORCEMOT	27-Oct-16	532755	TECHM	27-Oct-16
532809	FSL	27-Oct-16	505400	TEXINFRA	27-Oct-16
531375	GCCLINP	27-Oct-16	533326	TEXRAIL	27-Oct-16
500660	GLAXO	27-Oct-16	531652	THIRDFIN	27-Oct-16
532296	GLENMARK	27-Oct-16	511559	TIMESGTY	27-Oct-16
511441	GUJCRED	27-Oct-16	532779	TORNTPOWER	27-Oct-16
530141	GYANDEV	27-Oct-16	506680	TRELICHE-B	27-Oct-16
500185	HCC	27-Oct-16	500251	TRENT	27-Oct-16
500186	HINDOILEXP	27-Oct-16	532343	TVSMOTOR	27-Oct-16
505726	IFBIND	27-Oct-16	539798	UMIYA	27-Oct-16
531314	INTCAPM	27-Oct-16	532432	UNITDSPR	27-Oct-16
530965	IOC	27-Oct-16	531762	UNJHAFOR	27-Oct-16
532162	JKPAPER	27-Oct-16	531894	VATSAMUS	27-Oct-16
500228	JSWSTEEL	27-Oct-16	539118	VRLOG	27-Oct-16
590003	KARURVYSYA	27-Oct-16	538268	WONDERLA	27-Oct-16
532732	KKCL	27-Oct-16	532794	ZEEMEDIA	27-Oct-16
507598	KLRF	27-Oct-16	509046	ZLEENCON	27-Oct-16
504258	LAKSELEC	27-Oct-16	511359	ADMANUM	28-Oct-16
532313	MAHLIFE	27-Oct-16	505216	ALFREDHE	28-Oct-16
521018	MARALOVER	27-Oct-16	506767	ALKYLAMINE	28-Oct-16
532500	MARUTI	27-Oct-16	512091	ANSHNCO	28-Oct-16
531727	MENNPIS	27-Oct-16	520119	ASAL	28-Oct-16
503015	MODERN	27-Oct-16	512247	ASHCAP	28-Oct-16
509760	MODRNSH	27-Oct-16	512573	AVANTI	28-Oct-16
532407	MOSCHIP	27-Oct-16	532977	BAJAJ-AUTO	28-Oct-16
500290	MRF	27-Oct-16	500490	BAJAJHLDNG	28-Oct-16
515037	MURUDCERA	27-Oct-16	524687	BASANTGL	28-Oct-16
537291	NATHBIOGEN	27-Oct-16	533228	BHARATFIN	28-Oct-16
502407	NATHPULP	27-Oct-16	513375	CARBORUNIV	28-Oct-16
532777	NAUKRI	27-Oct-16	500040	CENTURYTEX	28-Oct-16
504112	NELCO	27-Oct-16	521210	CITYMAN	28-Oct-16
500312	ONGC	27-Oct-16	531210	COLINZ	28-Oct-16
504093	PANAENERG	27-Oct-16	500830	COLPAL	28-Oct-16
501144	PEOPLIN	27-Oct-16	500089	DICIND	28-Oct-16
539354	POLYSPIN	27-Oct-16	532839	DISHTV	28-Oct-16
531870	POPULARES	27-Oct-16	505200	EICHERMOT	28-Oct-16
532934	PPAP	27-Oct-16	509525	EMPIND	28-Oct-16
526109	PRICOL	27-Oct-16	533213	FRONTSEC	28-Oct-16
532805	REDINGTON	27-Oct-16	511676	GICHSGFIN	28-Oct-16
520075	SAMKRG	27-Oct-16	531600	GOGIACAP	28-Oct-16
526885	SARLAPOLY	27-Oct-16	500300	GRASIM	28-Oct-16
532663	SASKEN	27-Oct-16	507960	GUJHOTE	28-Oct-16
507894	SCHABLON	27-Oct-16	532659	IDFC	28-Oct-16
532498	SHRIRAMCIT	27-Oct-16	500213	ITHL	28-Oct-16
514197	STCORP	27-Oct-16	523405	JMFINANCIL	28-Oct-16
532374	STRTECH	27-Oct-16	500165	KANSAINER	28-Oct-16
509930	SUPREMEIND	27-Oct-16	508993	KEDIACN	28-Oct-16
500408	TATAELXSI	27-Oct-16	502150	KLYNCEM	28-Oct-16

517463	LINAKS	28-Oct-16	500280	CENTENKA	01-Nov-16
505320	LYNMC	28-Oct-16	540124	GNA	01-Nov-16
533088	MHRIL	28-Oct-16	533217	HMVL	01-Nov-16
500890	MODIRUBBER	28-Oct-16	509966	VSTIND	01-Nov-16
500452	NEPCAGRO	28-Oct-16	590043	HARITASEAT	02-Nov-16
500301	NEPCMICON	28-Oct-16	532662	HTMEDIA	02-Nov-16
531077	NEPCPAPER	28-Oct-16	511208	IVC	02-Nov-16
521192	NEPCTEX	28-Oct-16	526247	PREMEXPLQ	02-Nov-16
500790	NESTLEIND	28-Oct-16	532221	SONATSOFTW	02-Nov-16
508875	NITINALOY	28-Oct-16	500403	SUNDRMFAST	02-Nov-16
516082	NRAGRINDQ	28-Oct-16	532390	TAJGVK	02-Nov-16
533399	PARAPRINT	28-Oct-16	532513	TVSELECT	02-Nov-16
511702	PARSHINV	28-Oct-16	500425	AMBUJACEM	03-Nov-16
519439	PIONAGR	28-Oct-16	509480	BERGEPAIN	03-Nov-16
532826	RAJTV	28-Oct-16	531458	BOSTONBIO	03-Nov-16
590051	SAKSOFT	28-Oct-16	531270	DAZZEL	03-Nov-16
532872	SPARC	28-Oct-16	500840	EIHOTEL	03-Nov-16
501110	SUNRINV	28-Oct-16	500133	ESABINDIA	03-Nov-16
530677	SUPREME	28-Oct-16	532285	GEOJITBNPP	03-Nov-16
510245	SWASTIVI	28-Oct-16	506076	GRINDWELL	03-Nov-16
531003	SWRNASE	28-Oct-16	524754	GUJMEDI	03-Nov-16
500429	UNIPHOS	28-Oct-16	532835	ICRA	03-Nov-16
521226	UNIROYAL	28-Oct-16	539524	LALPATHLAB	03-Nov-16
512070	UPL	28-Oct-16	517449	MAGNAELQ	03-Nov-16
532156	VAIBHAVGBL	28-Oct-16	522241	MMFL	03-Nov-16
500295	VEDL	28-Oct-16	526299	MPHASIS	03-Nov-16
524038	VENLONENT	28-Oct-16	532638	SHOPERSTOP	03-Nov-16
517437	DUTRON	29-Oct-16	502180	SHREDIGCEM	03-Nov-16
530405	JINDCAP	29-Oct-16	520056	SUNCLAYLTD	03-Nov-16
532644	JKCEMENT	29-Oct-16	533553	TDPOWERSYS	03-Nov-16
530243	MANGASOF	29-Oct-16	517506	TTKPRESTIG	03-Nov-16
526831	NAINAMS	29-Oct-16	526125	ARHNTTO	04-Nov-16
521009	NIWASSP	29-Oct-16	534804	CARERATING	04-Nov-16
514460	OSWAYRN	29-Oct-16	523127	EIHAHOTELS	04-Nov-16
519230	RICHIRICH	29-Oct-16	516078	JUMBO	04-Nov-16
530565	SSLFINANCE	29-Oct-16	518011	KEERTHI	04-Nov-16
513488	SSWRL	29-Oct-16	502958	LAKSHMIMIL	04-Nov-16
532493	ASTRAMICRO	31-Oct-16	524558	NEULANLAB	04-Nov-16
530705	FLORATX	31-Oct-16	532460	PONNIERODE	04-Nov-16
530389	GEEFC	31-Oct-16	502450	SESHAPAPER	04-Nov-16
532041	HINDBIO	31-Oct-16	526161	SPENTA	04-Nov-16
538838	ICL	31-Oct-16	532349	TCI	04-Nov-16
530915	JRFOODS	31-Oct-16	500114	TITAN	04-Nov-16
521248	KITEX	31-Oct-16	500008	AMARAJABAT	05-Nov-16
530441	MAHAN	31-Oct-16	501455	GREAVESCOT	05-Nov-16
511403	SAJEEV	31-Oct-16	522064	HONDAPOWER	05-Nov-16
538876	STSERV	31-Oct-16	524699	KILBURN	05-Nov-16
531279	TRISHAKT	31-Oct-16	524709	NAGAAGRI	05-Nov-16
538873	WINYCOMM	31-Oct-16	504132	PERMAGN	05-Nov-16

532853	ASAHISONG	07-Nov-16	517334	MOTHERSUMI	10-Nov-16
500825	BRITANNIA	07-Nov-16	514332	NEOINFRA	10-Nov-16
514045	BSL	07-Nov-16	500313	OILCOUNTUB	10-Nov-16
532927	ECLERX	07-Nov-16	532503	RAJPALAYAM	10-Nov-16
503681	ELCIDIN	07-Nov-16	505800	RANEHOLDIN	10-Nov-16
500141	FERROALL	07-Nov-16	511712	RELICTEC	10-Nov-16
532424	GODREJCP	07-Nov-16	520151	SHREYAS	10-Nov-16
532174	ICICIBANK	07-Nov-16	526901	SONALAD	10-Nov-16
521234	SRINACHA	07-Nov-16	500411	THERMAX	10-Nov-16
539353	SWARAJAUTO	07-Nov-16	500414	TIMEX	10-Nov-16
501425	BBTC	08-Nov-16	539123	VBIND	10-Nov-16
500020	BOMDYEING	08-Nov-16	532351	AKSHOPTFBR	11-Nov-16
531608	GORANIN	08-Nov-16	506820	ASTRAZEN	11-Nov-16
532851	INSECTICID	08-Nov-16	512277	AUTOINT	11-Nov-16
505737	INTLCOMBQ	08-Nov-16	531775	CISTRO	11-Nov-16
530443	KIRANSY-B	08-Nov-16	539131	CLLIMITED	11-Nov-16
500346	PUNJCOMMU	08-Nov-16	530171	DAULAT	11-Nov-16
505192	SMLISUZU	08-Nov-16	532180	DHANBANK	11-Nov-16
526827	SPICEISL	08-Nov-16	531306	DHPIND	11-Nov-16
524129	VINYLINDIA	08-Nov-16	531237	DHRUVCA	11-Nov-16
501370	WALCHPF	08-Nov-16	505790	FAGBEARING	11-Nov-16
532212	ARCHIES	09-Nov-16	500202	INDLEASE	11-Nov-16
519174	ASHAI	09-Nov-16	500211	INSILCO	11-Nov-16
523489	CMMHOSP	09-Nov-16	504840	KAIRA	11-Nov-16
521220	DAMOINDUS	09-Nov-16	523323	KOVAI	11-Nov-16
523708	EIMCOELECO	09-Nov-16	539446	KRISHFAB	11-Nov-16
517477	ELNET	09-Nov-16	500520	M&M	11-Nov-16
531599	FDC	09-Nov-16	517344	MINDTECK	11-Nov-16
500257	LUPIN	09-Nov-16	501343	MOTOGENFIN	11-Nov-16
513496	MEWATZI	09-Nov-16	535514	PRIMECAPM	11-Nov-16
532097	MUKANDENGG	09-Nov-16	506655	SUDARSCHEM	11-Nov-16
500260	RAMCOCEM	09-Nov-16	507747	TTKHEALTH	11-Nov-16
512153	SPECMKT	09-Nov-16	531831	UNISH	11-Nov-16
524542	SUKHJITS	09-Nov-16	511690	WARNER	11-Nov-16
530795	SUNCITYSY	09-Nov-16	523411	ADCINDIA	12-Nov-16
500303	ABIRLANUVO	10-Nov-16	514440	BPTX	12-Nov-16
508939	BLCISER	10-Nov-16	500085	CHAMBLFERT	12-Nov-16
500067	BLUESTARCO	10-Nov-16	530859	COSBOARD	12-Nov-16
511742	CHOKSEC	10-Nov-16	531472	CYBELEIND	12-Nov-16
522261	DOLPHINOFF	10-Nov-16	532133	IFGLREFRAC	12-Nov-16
505700	ELECON	10-Nov-16	531779	PADALPO	12-Nov-16
500144	FINCABLES	10-Nov-16	517296	PHOENIXLL	12-Nov-16
531737	GREENCREST	10-Nov-16	512099	PUNITCO	12-Nov-16
511543	GSBFIN	10-Nov-16	533470	RUSHIL	12-Nov-16
514386	GUJCOTEX	10-Nov-16	526532	SFPIL	12-Nov-16
526779	HINAFIL	10-Nov-16	533170	TAMBOLI	12-Nov-16
511092	JMDTELEFILM	10-Nov-16	534392	VSSL	12-Nov-16
505750	JOSTS	10-Nov-16	532509	SUPRAJIT	13-Nov-16
531213	MANAPPURAM	10-Nov-16	523168	AYPLAMI	14-Nov-16

517203	BEELE	14-Nov-16	590066	KCP	14-Nov-16
519500	BKV	14-Nov-16	530125	SAMRATPH	14-Nov-16
532783	DAAWAT	14-Nov-16	523425	SUNRAJDI	14-Nov-16
500164	GODREJIND	14-Nov-16	532166	ALKASEC	15-Nov-16
514360	GUPTCIN	14-Nov-16	506943	JBCHEPHARM	18-Nov-16
524378	JMDEPACKR	14-Nov-16	535755	ABFRL	24-Nov-16
			522113	TIMKEN	28-Nov-16

Result Q2FY17

BSE CODE	NSE CODE	Sales Rs Cr	Sales YoY	Pat Rs Cr	PAT YoY
500412	TIRUMALCHM	254.10	11.43	16	(209.77)
504961	TATAYODOGA	16.60	(57.99)	(24)	153.64
500150	FOSECOIND	86.67	11.29	8	(12.75)
532790	TANLA	134.00	25.61	10	136.83
531209	NUCLEUS	95.60	12.90	14	201.32
522205	PRAJIND	205.79	1.72	3	(34.53)
513729	AROGRANITE	63.67	5.43	3	17.31
500730	NOCIL	181.30	0.75	46	151.61
500253	LICHSGFIN	3428.30	13.29	495	20.16
500233	KAJARIACER	706.00	16.22	64	8.29
533151	DBCORP	528.60	12.06	90	51.56
524669	HESTERBIO	29.60	28.58	6	38.60

Economic Calendar

Country	Monday 17th Oct 16	Tuesday 18th Oct 16	Wednesday 19th Oct 16	Thursday 20th Oct 16	Friday 21th Oct 16
US	Empire State Manufacturing Index , Capacity Utilization Rate , Industrial Production m/m .	CPI m/m , Core CPI m/m , NAHB Housing Market Index , TIC Long-Term Purchases.	Building Permits ,Housing Starts , Crude Oil Inventories , Beige Book .	Philly Fed Manufacturing Index ,Unemployment Claims , Existing Home Sales.	Flash Manufacturing PMI , Flash Services PMI.
UK/EURO ZONE	Italian Trade Balance , Final CPI y/y , Final Core CPI y/y , German Buba Monthly Report .		Average Earnings Index 3m/y , Claimant Count Change , Unemployment Rate .	German PPI m/m ,Current Account , Public Sector Net Borrowing , Minimum Bid Rate , ECB Press Conference.	French Flash Manufacturing PMI , French Flash Services PMI , Spanish Unemployment Rate , German Constitutional Court Ruling , German Flash Manufacturing PMI , German Flash Services PMI , Flash Manufacturing PMI, Flash Services PMI .
INDIA	Balance of Trade				

Risk Disclosure & Disclaimer : This report/message is for the personal information of the authorized recipient and does not construe to be any investment, legal or taxation advice to you. Narnolia Securities Ltd. (Hereinafter referred as NSL) is not soliciting any action based upon it. This report/message is not for public distribution and has been furnished to you solely for your information and should not be reproduced or redistributed to any other person in any form. The report/message is based upon publicly available information, findings of our research wing "East wind" & information that we consider reliable, but we do not represent that it is accurate or complete and we do not provide any express or implied warranty of any kind, and also these are subject to change without notice. The recipients of this report should rely on their own investigations, should use their own judgment for taking any investment decisions keeping in mind that past performance is not necessarily a guide to future performance & that the the value of any investment or income are subject to market and other risks. Further it will be safe to assume that NSL and /or its Group or associate Companies, their Directors, affiliates and/or employees may have interests/ positions, financial or otherwise, individually or otherwise in the recommended/mentioned securities/mutual funds/ model funds and other investment products which may be added or disposed including & other mentioned in this report/message. NSL or any of its affiliates or employees shall not be in any way responsible for any loss or damage that may arise to any person from any action taken based on the above information or inadvertent error in the information contained in this report/message.



(Regn. No. : INP 000004011)

Narnolia Securities Ltd.

Narnolia Research Lab

Stellar IT Park | 5th Floor | Office Space No. 6 | Tower-IIInd Plot
No. C-25 | Sector-62 | Noida | Ph : 0120-4215110

Central Strategy Desk - Kolkata

201 | 2nd Floor | Marble Arch Building | 236B-AJC Bose Road
Kolkata-700 020 , Ph : 033-40501500 |
Email : research@narnolia.com | www.narnolia.com