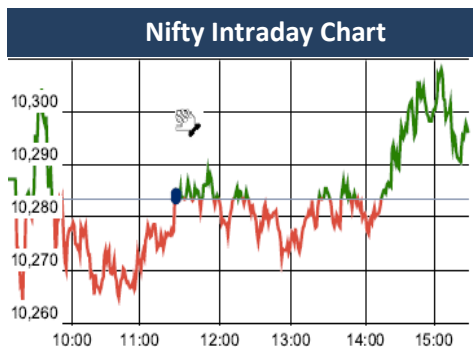


### KEY LEVELS

Support 1 : 9955

Resistance 1 : 10285  
Resistance 2 : 10369



### Market Outlook

Indian equities gave a range bound and choppy movement throughout the day on Monday and after opening on a flat note, Nifty traded in the narrow range of 10261 and 10310. At the end of the day the index closed at 10298.75. It had a net gain of 0.15% over the previous trading day's close. The small cap and midcap indices slightly out-performed the benchmark index and closed the day after gaining 0.5%-0.8%.

On the sectoral front, some buying interest was witnessed in realty and metal stocks while the other major indices remained subdued. The breadth of the market was positive and about two shares advanced for every share advanced at NSE.

Nifty trading above 23 times its trailing 12 months earning requires the market to go in for a price or time correction. Though on-going 2nd quarter FY18 earning season has gone well with a clearer sign of margin improvement. But at such elevated level of valuation, good earning is not enough. Rather it needs to be great to support price momentum from hereon.

Similar to the way the rally of the calendar year 2017 in India has been in sync with global markets, correction too is happening in sync with correction in global markets over last five trading session. Nifty has now come close to its support level of 10000-10100 but all short-term direction will be dependent more on how global markets move.

**Quote of the Day** : "Absent a lot of surprises, stocks are relatively predictable over twenty years. As to whether they're going to be higher or lower in two to three years, you might as well flip a coin to decide."  
**Peter Lynch**

### Market

| Market                          | Value     | % Change |
|---------------------------------|-----------|----------|
| <b>Morning Traded Market</b>    |           |          |
| SGX NIFTY                       | 10,326.00 | 0.11%    |
| NIKKIE                          | 22,487.20 | 1.00%    |
| HANG SENG                       | 29,448.19 | 0.64%    |
| <b>Yesterday Closing Market</b> |           |          |
| Sensex                          | 33,359.90 | 0.05%    |
| Nifty                           | 10,298.75 | 0.15%    |
| DOW                             | 23,430.33 | 0.31%    |
| NASDAQ                          | 6,790.71  | 0.12%    |
| CAC                             | 5,340.45  | 0.40%    |
| DAX                             | 13,058.66 | 0.50%    |
| FTSE                            | 7,389.46  | 0.12%    |
| EW ALL SHARE                    | 19,228.31 | 0.40%    |

% Change in 1 day

### Commodity Price ( Yesterday Closing )

| Commodity/Currencies | Value    | % Change |
|----------------------|----------|----------|
| GOLD                 | 29370.00 | -1.08%   |
| SILVER               | 39261.00 | -1.88%   |
| CRUDEOIL             | 62.26    | 0.11%    |
| NATURALGAS           | 199.40   | -1.77%   |
| DOLLAR/RS.           | 65.09    | 0.12%    |
| EURO/RS.             | 76.73    | -0.03%   |
| POUND/RS.            | 86.26    | 0.58%    |

% Change in 1 day

### Institutional Turnover

| FII       |          |           |          |
|-----------|----------|-----------|----------|
| Investor  | Buy(Cr.) | Sale(Cr.) | Net(Cr.) |
| 20-Nov-17 | 4699     | 5058      | (359)    |
| Nov-17    | 77341    | 87963     | (11249)  |
| 2017      | 1120558  | 1154296   | (34365)  |
| DII       |          |           |          |
| Investor  | Buy(Cr.) | Sale(Cr.) | Net(Cr.) |
| 20-Nov-17 | 2858     | 2245      | 613      |
| Nov-17    | 53411    | 51344     | (1914)   |
| 2017      | 714945   | 640846    | 70120    |

### Event Today

#### Interim Dividend

AUROPHARMA : Rs 1.5/-

JAMNAAUTO : Rs 0.3/-

MRF : Rs 3/-

MRSS : Rs 0.50/-

( Ex date : 21.11.2017 )

#### Amalgamation

BORAX

( Ex date : 21.11.2017 )

#### Result

GARDENSILK, GENESYS, IMPAL

#### Concall

Mayur Uniquote : 11:00 AM

Insecticide Ind : 2:00 PM

CRISIL : 3:00 PM

TCPL Packaging : 4:00 PM

**IRB****"BUY"****21th Nov 2017**

IRB has posted numbers in line with our expectations for Q2FY18. Sales was down by 13% YoY to Rs.1123 Cr (v/s our estimate of Rs. 1105 Cr). Traffic growth during the quarter was muted owing to the GST, but we expect it to normalize as economic activities will pick up post GST. The company has successfully transferred IRB Pathankot to IRB InvIT trust during the quarter at 1.3x Book value. This move has off-loaded debt of Rs.943 Cr and debt to equity has improved to 1.7x. Now, management is eyeing on HAM and TOT model in order to grow in line with industry. Government has announced investment of Rs. 6.92 lakh Cr in infrastructure. Out of this Rs. 1.75 Lakh Cr will be through PPP mode, which will create huge opportunity for growth for IRB. Ahmadabad – Vadodara toll projects will continue to face traffic diversion issues although company has taken up the matter with NHAI. We expect company to post stronger set of numbers going ahead, considering coming up toll collection on 3 new projects and strong traffic growth on Mumbai Pune expressway. In last 15 days stock has corrected nearly 5-6% and presently trading at 1.2x FY19 expected Book value which is lower against last 4 years average of 1.5x and lower amongst its peers. We value IRB at 1.5x FY19 expected book value and we change our rating from "HOLD" to "BUY" with target price Rs.288.

**CAPF****"UNDER REVIEW"****20th Nov 2017**

Assets Quality remains one of the best in the industry despite strong AUM growth. From nearly 5% of GNPA in FY10, CAPF has improved its assets quality to the level of 1% in FY17. However credit cost remains on the higher side due to aggressive write off policy of the company. We see credit cost to decline materially in longer terms which will boost the return ratio significantly. Margin has improved significantly due to change in business model towards retail book. Change in loan mix (more towards higher yield retail assets) and reducing bank borrowing can further support the margins to improve. We expect the company can post higher return ratio of RoE in the range of 17-18% and RoA 1.9% by FY19. CAPF- under review and stock- Not RATFD.

\*For details, refer to our daily report- *India Equity Analytics***Top News****Reliance Capital Concall 2QFY18**

General insurance growth 14% QOQ (mainly Health & Motor Insurance)

9.3% of Pvt Market share

CRAR 21.4% , TIER 1-13%

bankca tie up with Equitas Small Finance Bank , (Total tie up 11)

Reliance Nippon asset mngmt AUM 3.8 bn , NPA 21%, sip rose to 2.2 million

Reliance Money AUM increased by 3% to 163 bn, loan book growth 12% to 127bn,disb increased by 16%(with 33% in SME ), 8% declined in GNPA 6.6 bn(4.1% of AUM)NPA 3.3%, Coverage with write off is 19%, while excluding write off is 48%.NIM 5.5 % FROM 5.4%(QOQ)

Reliance Home Finance 51% of portfolio is homeloan and affordable home loan .AUM grew by 53% to 141 bn ,Disb 26% to 20bn. Future Guidance of 3.5% in affordable segment GNPA .8% of AUM, Coverage Excluding write off 28%, including write off is 45%.NIM 3.9%.CARE rating of AA+ In Long term borrowing.

Reliance Nepal Insurance

Individual Premium & New business premium increased by 3% to 1.7 bn to 7.6 bn. Individual WRPA increased by 4% to 1.7 bn.13 month persistency increased from 61% to 68%(YoY).Tradition Product segment consist of 83% of New Business Premium.Won Bancasurance with Bank of Maharastra.

CCD raised ,exposure by media & entertainment of 6500cr to be run off by mar 18

>> **Ujjivan Financial Services** is poised for good growth in Q3 and Q4 and are on track to achieve 18-20 percent growth in FY18. Company aim to end the year with the net interest margins around 10-10.5 percent in FY18

**2QFY18 CEATLTD concall highlights:**

Volume growth in Passenger vehicle segment to pick up from Q3FY18 onwards due to lower base in 3QFY17.

The company faced challenging time on the exports front as there were issues like rupee appreciation, import barriers in Indonesia and political unrest in some other markets.

Management expects raw material price to remain stable for rest of the year.

The management does not anticipate any further price hike due to high competitive intensity in the industry.

The company has started production of Off the road tyres in its Ambernath facility and testing for these tyres is in process in Europe. Once the testing will complete the company will launch these tyres in Indian market also. OTR tyres have margin of over 20%.

Debt to Equity ratio stands at 0.4:1.

Capacity utilization for new facilities at Nagpur and Halol stand at 60% and 75% respectively.

CEAT has market share of 28-30% on the 2W replacement market and targets to achieve 35% in next couple of years. Market share in the passenger car segment is around 12% and this segment may face some capacity constraints in near future looking at the demand scenario.

Capex in FY18 to be Rs.500-600 crores largely towards new capacity expansion.

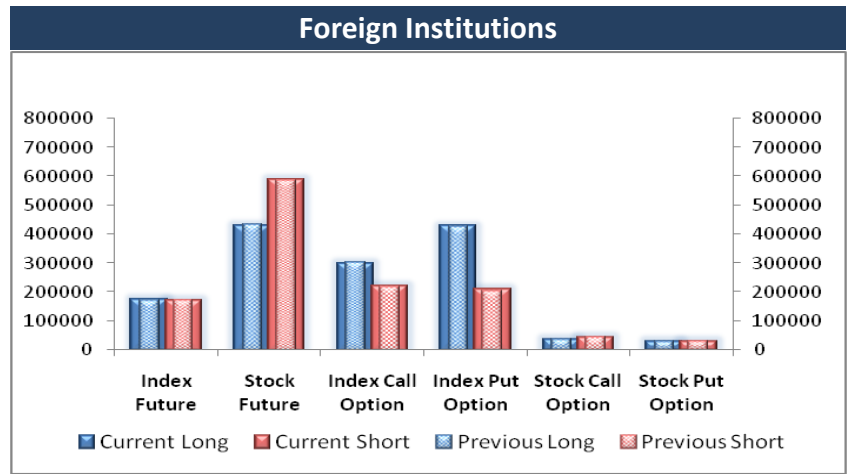
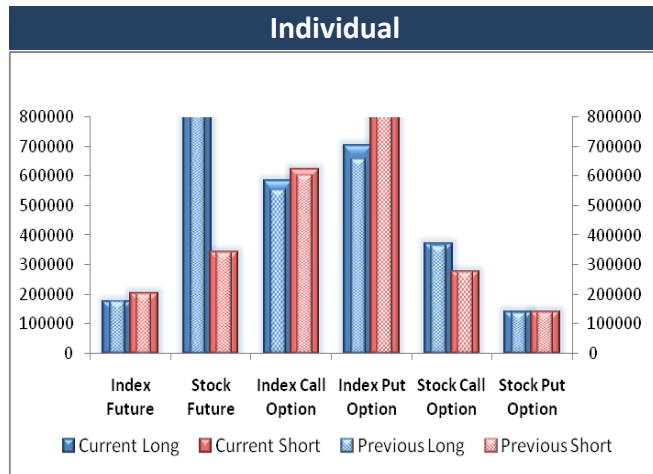
Tax rate will be in the range of 32-33% for FY18.

**Panacea Biotec** has focused more on the branded pharmaceutical and vaccine business in the private market and also on growing the differentiated products in the portfolio, where competition is limited and complexity is high . The fund raising plan is going pretty well and we have had the board, as well the shareholders' approval in place. We are doing the roadshows and there is a big interest of investment in Panacea Biotec from several investors . The process is expected to get completed by February-March of FY18

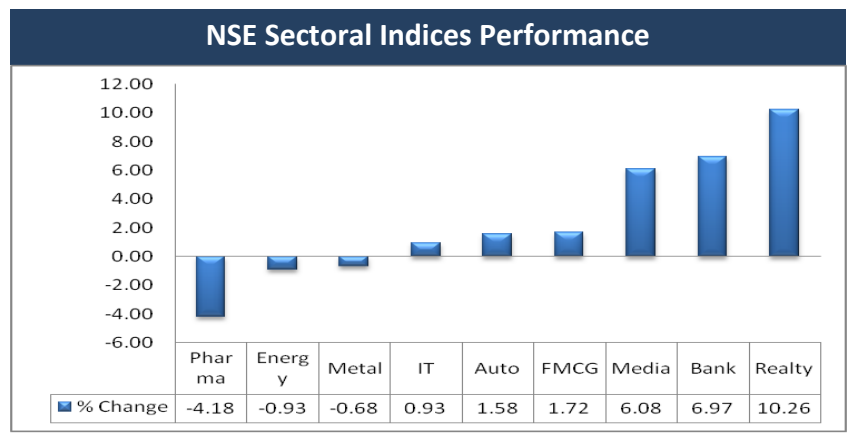
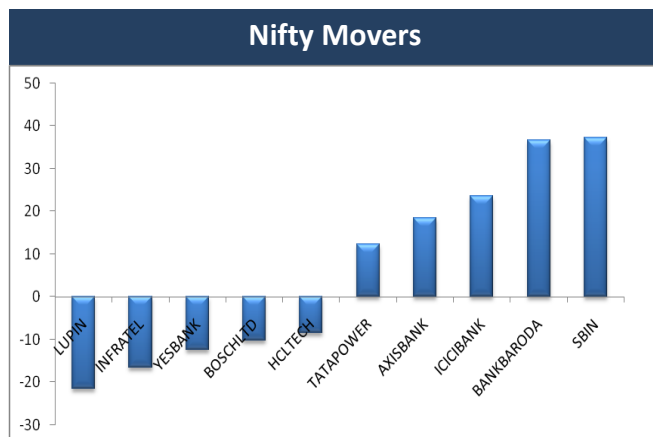
### Block Deal

| Exchange | Deal Date | Company    | Client Name                                     | Deal Type | Quantity | Price |
|----------|-----------|------------|---|-----------|----------|-------|
| NSE      | 20-Nov-17 | JUSTDIAL   | CROSSLAND TRADING CO                            | BUY       | 392829   | 560   |
| NSE      | 20-Nov-17 | JUSTDIAL   | WAY2WEALTH ENTERPRISES PRIVATE LIMITED          | BUY       | 338701   | 559   |
| NSE      | 20-Nov-17 | RIIL       | DEVISHA DHARMENDRA VYAS (DEVISHA Y UPADHYAY)    | BUY       | 93995    | 538   |
| NSE      | 20-Nov-17 | RIIL       | GRAVITON RESEARCH CAPITAL LLP                   | BUY       | 80311    | 526   |
| NSE      | 20-Nov-17 | RIIL       | SHAASTRA SECURITIES TRADING PRIVATE LIMITED     | BUY       | 117167   | 533   |
| NSE      | 20-Nov-17 | STEELKIND  | ARCADIA SHARE & STOCK BROKERS PRIVATE LIMITED   | BUY       | 252571   | 120   |
| NSE      | 20-Nov-17 | STEELKIND  | COSMOS PRIME PROJECTS LIMITED                   | BUY       | 400000   | 121   |
| NSE      | 20-Nov-17 | SUNDARAM   | VIRENDRAKUMAR JAYANTILAL PATEL                  | BUY       | 100000   | 3     |
| NSE      | 20-Nov-17 | JUSTDIAL   | CROSSLAND TRADING CO                            | SELL      | 392829   | 560   |
| NSE      | 20-Nov-17 | JUSTDIAL   | WAY2WEALTH ENTERPRISES PRIVATE LIMITED          | SELL      | 338701   | 559   |
| NSE      | 20-Nov-17 | RIIL       | DEVISHA DHARMENDRA VYAS (DEVISHA Y UPADHYAY)    | SELL      | 93995    | 538   |
| NSE      | 20-Nov-17 | RIIL       | GRAVITON RESEARCH CAPITAL LLP                   | SELL      | 80311    | 526   |
| NSE      | 20-Nov-17 | RIIL       | SHAASTRA SECURITIES TRADING PRIVATE LIMITED     | SELL      | 117167   | 533   |
| NSE      | 20-Nov-17 | STEELKIND  | ARCADIA SHARE & STOCK BROKERS PRIVATE LIMITED   | SELL      | 502571   | 121   |
| NSE      | 20-Nov-17 | SUNDARAM   | BUDDHISAGAR SHARES AND SERVICES PRIVATE LIMITED | SELL      | 1634529  | 3     |
| NSE      | 20-Nov-17 | SUNDARAM   | VIRENDRAKUMAR JAYANTILAL PATEL                  | SELL      | 1565757  | 4     |
| NSE      | 20-Nov-17 | TARAJEWELS | RAJEEV VASANT SHETH                             | SELL      | 273247   | 22    |

### F&O OPEN INTEREST ( Number of Contracts )



### MARKET MOVERS (1 MONTH CHANGE)



**Result Calendar Q2FY18**

| BSE Code | Company Name | Date      | BSE Code | Company Name | Date      |
|----------|--------------|-----------|----------|--------------|-----------|
| 538861   | AMSONS       | 21-Nov-17 | 532661   | RML          | 22-Nov-17 |
| 540694   | ANG          | 21-Nov-17 | 540673   | SIS          | 22-Nov-17 |
| 523896   | AVIPHOT      | 21-Nov-17 | 531972   | TRIDETOOL    | 22-Nov-17 |
| 531458   | BOSTONBIO    | 21-Nov-17 | 530487   | VIBROSO      | 22-Nov-17 |
| 540403   | CLEUCATE     | 21-Nov-17 | 506767   | ALKYLAMINE   | 23-Nov-17 |
| 531270   | DAZZEL       | 21-Nov-17 | 533270   | BEDMUTHA     | 23-Nov-17 |
| 539190   | DFL          | 21-Nov-17 | 534927   | EBFL         | 23-Nov-17 |
| 538708   | ETIL         | 21-Nov-17 | 533289   | KTIL         | 23-Nov-17 |
| 500155   | GARDENSILK   | 21-Nov-17 | 505324   | MANUGRAPH    | 23-Nov-17 |
| 506109   | GENESYS      | 21-Nov-17 | 530169   | MOHITPPR     | 23-Nov-17 |
| 533048   | GISOLUTION   | 21-Nov-17 | 511551   | MONARCH      | 23-Nov-17 |
| 532744   | GTNTEX       | 21-Nov-17 | 524084   | MONSANTO     | 23-Nov-17 |
| 590065   | IMPAL        | 21-Nov-17 | 526435   | PERFEPA      | 23-Nov-17 |
| 504786   | INVPRECQ     | 21-Nov-17 | 505368   | REVATHI      | 23-Nov-17 |
| 532771   | JHS          | 21-Nov-17 | 500550   | SIEMENS      | 23-Nov-17 |
| 507794   | KHAICHEM     | 21-Nov-17 | 538562   | SKIPPER      | 23-Nov-17 |
| 590075   | LAMBODHARA   | 21-Nov-17 | 516022   | STARPAPER    | 23-Nov-17 |
| 531613   | MAL          | 21-Nov-17 | 537253   | SUNLOC       | 23-Nov-17 |
| 532932   | MANAKSIA     | 21-Nov-17 | 513149   | ACROW        | 24-Nov-17 |
| 539044   | MANAKSTELTD  | 21-Nov-17 | 517546   | ALFATRAN     | 24-Nov-17 |
| 530543   | MARG         | 21-Nov-17 | 538653   | AMMLTD       | 24-Nov-17 |
| 531819   | NUWAY        | 21-Nov-17 | 511605   | ARIHCAPM     | 24-Nov-17 |
| 517397   | PANELEC      | 21-Nov-17 | 507526   | ASALCBR      | 24-Nov-17 |
| 514326   | PATSPINLTD   | 21-Nov-17 | 526843   | ATLANTADEV   | 24-Nov-17 |
| 524727   | SDL          | 21-Nov-17 | 530479   | ATLINFRA     | 24-Nov-17 |
| 530433   | SHIVAAGRO    | 21-Nov-17 | 503960   | BBL          | 24-Nov-17 |
| 539010   | SMADL        | 21-Nov-17 | 539018   | BEEKAY       | 24-Nov-17 |
| 505160   | TALBROAUTO   | 21-Nov-17 | 533260   | CAREERP      | 24-Nov-17 |
| 514236   | TRUPTWI      | 21-Nov-17 | 530393   | DBSTOCKBRO   | 24-Nov-17 |
| 500138   | UNIWORTH     | 21-Nov-17 | 538608   | DWITIYA      | 24-Nov-17 |
| 522091   | UVDRHOR      | 21-Nov-17 | 523329   | ELDEHSG      | 24-Nov-17 |
| 515099   | VERTICLIND   | 21-Nov-17 | 500650   | EXCELINDUS   | 24-Nov-17 |
| 533022   | 20MICRONS    | 22-Nov-17 | 524019   | KINGFA       | 24-Nov-17 |
| 539528   | AAYUSH       | 22-Nov-17 | 500259   | LYKALABS     | 24-Nov-17 |
| 532888   | ASIANILES    | 22-Nov-17 | 531821   | MUNOTHFI     | 24-Nov-17 |
| 517330   | CMI          | 22-Nov-17 | 511401   | MUNOTHI      | 24-Nov-17 |
| 590031   | DENORA       | 22-Nov-17 | 514330   | OBRSESY      | 24-Nov-17 |
| 526783   | DRAGARWQ     | 22-Nov-17 | 500354   | RAJSREESUG   | 24-Nov-17 |
| 534839   | EFPL         | 22-Nov-17 | 532987   | RBL          | 24-Nov-17 |
| 509557   | GARWALLROP   | 22-Nov-17 | 590051   | SAKSOFT      | 24-Nov-17 |
| 524754   | GUJMEDI      | 22-Nov-17 | 505650   | SKYLMILAR    | 24-Nov-17 |
| 539984   | HUIL         | 22-Nov-17 | 513418   | SMFIL        | 24-Nov-17 |
| 517063   | JETKINGQ     | 22-Nov-17 | 511389   | VIDEOIND     | 24-Nov-17 |
| 539045   | MNKALCOLTD   | 22-Nov-17 | 531717   | VIDHIING     | 24-Nov-17 |
| 539046   | MNKCMILTD    | 22-Nov-17 | 524758   | WINTAC       | 24-Nov-17 |
| 524558   | NEULANLAB    | 22-Nov-17 | 526225   | BLOOM        | 25-Nov-17 |

|        |             |           |        |            |           |
|--------|-------------|-----------|--------|------------|-----------|
| 526829 | CONFIPET    | 25-Nov-17 | 533006 | BIRLACOT   | 28-Nov-17 |
| 526285 | DIVYAJYQ    | 25-Nov-17 | 526817 | CHEVIOT    | 28-Nov-17 |
| 507910 | FIBERWEB    | 25-Nov-17 | 522163 | DIAPOWERR  | 28-Nov-17 |
| 522017 | FLUIDOM     | 25-Nov-17 | 519126 | HNDFDS     | 28-Nov-17 |
| 531744 | GINISILK    | 25-Nov-17 | 505737 | INTLCOMBQ  | 28-Nov-17 |
| 526729 | GOLDIAM     | 25-Nov-17 | 507580 | IVP        | 28-Nov-17 |
| 533257 | INDOSOLAR   | 25-Nov-17 | 513179 | NATNLSTEEL | 28-Nov-17 |
| 538964 | MERCURYLAB  | 25-Nov-17 | 531494 | NAVBLDR    | 28-Nov-17 |
| 506579 | ORIENTCQ    | 25-Nov-17 | 539015 | ORTEL      | 28-Nov-17 |
| 532521 | PALRED      | 25-Nov-17 | 512026 | PHTRADING  | 28-Nov-17 |
| 522207 | RASANDIK    | 25-Nov-17 | 523523 | RAINBOWPAP | 28-Nov-17 |
| 513295 | RUCHISTR    | 25-Nov-17 | 537254 | RCIIND     | 28-Nov-17 |
| 501423 | SHAILY      | 25-Nov-17 | 519191 | RGRL       | 28-Nov-17 |
| 531169 | SKPSEC      | 25-Nov-17 | 517496 | RICOHQ     | 28-Nov-17 |
| 513575 | STERPOW     | 25-Nov-17 | 533284 | RPPINFRA   | 28-Nov-17 |
| 513307 | SYNTHFO     | 25-Nov-17 | 530997 | UNIQUEO    | 28-Nov-17 |
| 532928 | TRIL        | 25-Nov-17 | 507410 | WALCHANNAG | 28-Nov-17 |
| 539398 | VISHALBL    | 25-Nov-17 | 505029 | ATLASCYCLE | 29-Nov-17 |
| 531156 | ALFAVIO     | 27-Nov-17 | 524723 | BIJHANS    | 29-Nov-17 |
| 532994 | ARCHIDPLY   | 27-Nov-17 | 511369 | FIRFIN     | 29-Nov-17 |
| 538713 | ATISHAY     | 27-Nov-17 | 538961 | GENUSPAPER | 29-Nov-17 |
| 532282 | CASTEXTech  | 27-Nov-17 | 532717 | INDOTECH   | 29-Nov-17 |
| 526546 | CHOKSILA    | 27-Nov-17 | 500234 | KAKATCEM   | 29-Nov-17 |
| 539900 | DIDL        | 27-Nov-17 | 532741 | KAMDHENU   | 29-Nov-17 |
| 526927 | DION        | 27-Nov-17 | 532357 | MUKTAARTS  | 29-Nov-17 |
| 526703 | ECOPLAST    | 27-Nov-17 | 509040 | NETLINK    | 29-Nov-17 |
| 532980 | GOKUL       | 27-Nov-17 | 507813 | NOL        | 29-Nov-17 |
| 509152 | GRPLTD      | 27-Nov-17 | 517119 | PCS        | 29-Nov-17 |
| 505712 | GUJAUTO     | 27-Nov-17 | 526247 | PREMEXPLQ  | 29-Nov-17 |
| 523586 | INDTONER    | 27-Nov-17 | 526071 | STELLANT   | 29-Nov-17 |
| 540735 | IRIS        | 27-Nov-17 | 534756 | TARAJEWELS | 29-Nov-17 |
| 530357 | KBSINDIA    | 27-Nov-17 | 534369 | TBZ        | 29-Nov-17 |
| 532967 | KIRIINDUS   | 27-Nov-17 | 532375 | TIPSINDLTD | 29-Nov-17 |
| 513335 | METALFORGE  | 27-Nov-17 | 506687 | TRANSPEK   | 29-Nov-17 |
| 533008 | OISL        | 27-Nov-17 | 532212 | ARCHIES    | 30-Nov-17 |
| 540544 | PSPPROJECT  | 27-Nov-17 | 530233 | AUROLAB    | 30-Nov-17 |
| 502448 | ROLLT       | 27-Nov-17 | 533090 | EXCEL      | 30-Nov-17 |
| 507998 | SIMMOND     | 27-Nov-17 | 590066 | KCP        | 30-Nov-17 |
| 505729 | SINGER      | 27-Nov-17 | 504132 | PERMAGN    | 30-Nov-17 |
| 503811 | SIYSIL      | 27-Nov-17 | 531870 | POPULARES  | 30-Nov-17 |
| 524514 | TULASEEBIOE | 27-Nov-17 | 524037 | RAMAPHO    | 30-Nov-17 |
| 519156 | VADILALIND  | 27-Nov-17 | 513043 | REMIEDEL   | 30-Nov-17 |
| 519152 | VADILENT    | 27-Nov-17 | 512487 | REMIELEK   | 30-Nov-17 |
| 509910 | ZSOUTGAS    | 27-Nov-17 | 505658 | REMIPRO    | 30-Nov-17 |
| 519183 | ADFFOODS    | 28-Nov-17 | 504360 | REMISIN    | 30-Nov-17 |
| 538365 | ADHUNIKIND  | 28-Nov-17 | 516016 | SHREYANIND | 30-Nov-17 |
| 532397 | ARMSPAPER   | 28-Nov-17 | 508961 | SHRICON    | 30-Nov-17 |
| 500024 | ASSAMCO     | 28-Nov-17 | 530429 | ASHISHPO   | 01-Dec-17 |
| 532336 | BARONINF    | 28-Nov-17 | 540621 | BHAGYAPROP | 01-Dec-17 |

|        |            |           |        |            |           |
|--------|------------|-----------|--------|------------|-----------|
| 512296 | BHAGYNAGAR | 01-Dec-17 | 530421 | KUWERIN    | 08-Dec-17 |
| 517238 | DYNAVSN    | 01-Dec-17 | 509762 | MAPROIN    | 08-Dec-17 |
| 512597 | KEYCORPSE  | 01-Dec-17 | 506618 | PUNJABCHEM | 08-Dec-17 |
| 522189 | KNDENGT    | 01-Dec-17 | 503831 | FOMEHOT    | 09-Dec-17 |
| 532626 | PONDYOXIDE | 01-Dec-17 | 540774 | IFGLEXPOR  | 09-Dec-17 |
| 532441 | RAINBOWDQ  | 01-Dec-17 | 515127 | RAMMA      | 09-Dec-17 |
| 500358 | RAMAPETRO  | 01-Dec-17 | 521234 | SRINACHA   | 09-Dec-17 |
| 505075 | SETCO      | 01-Dec-17 | 524824 | BALPHARMA  | 11-Dec-17 |
| 523826 | SOVERDIA   | 01-Dec-17 | 504671 | CHASBRT    | 11-Dec-17 |
| 533298 | SURANASOL  | 01-Dec-17 | 533212 | GKB        | 11-Dec-17 |
| 517530 | SURANAT&P  | 01-Dec-17 | 518011 | KEERTHI    | 11-Dec-17 |
| 537524 | VIAANINDUS | 01-Dec-17 | 511644 | OMEGAIN    | 11-Dec-17 |
| 524394 | VIMTALABS  | 01-Dec-17 | 535657 | OONE       | 11-Dec-17 |
| 533427 | VMS        | 01-Dec-17 | 526588 | PHOTOQUP   | 11-Dec-17 |
| 516030 | YASHPPR    | 01-Dec-17 | 526827 | SPICEISL   | 11-Dec-17 |
| 524695 | ASIANFR    | 02-Dec-17 | 531972 | TRIDETOOL  | 11-Dec-17 |
| 532230 | BENGALT    | 02-Dec-17 | 503657 | VEERENRGY  | 11-Dec-17 |
| 502168 | NCLIND     | 02-Dec-17 | 511523 | VEERHEALTH | 11-Dec-17 |
| 520008 | RICOAUTO   | 02-Dec-17 | 539854 | HALDER     | 12-Dec-17 |
| 530801 | DIAMOND    | 04-Dec-17 | 517044 | IDM        | 12-Dec-17 |
| 532768 | FIEMIND    | 04-Dec-17 | 538422 | JACKSON    | 12-Dec-17 |
| 524342 | INDOBORAX  | 04-Dec-17 | 535730 | KHOBSURAT  | 12-Dec-17 |
| 500211 | INSILCO    | 04-Dec-17 | 533202 | NITESHEST  | 12-Dec-17 |
| 532796 | LUMAXTECH  | 04-Dec-17 | 513127 | SHNALUM    | 12-Dec-17 |
| 590030 | SPIC       | 04-Dec-17 | 509015 | THAKRAL    | 12-Dec-17 |
| 530809 | BNRUDY     | 05-Dec-17 | 531411 | TUNITEX    | 12-Dec-17 |
| 523489 | CMMHOSP    | 05-Dec-17 | 521188 | UNITEDTE   | 12-Dec-17 |
| 514358 | EVERLON    | 05-Dec-17 | 532327 | ALLSOFT    | 13-Dec-17 |
| 536709 | INDRENEW   | 05-Dec-17 | 519500 | BKV        | 13-Dec-17 |
| 505800 | RANEHOLDIN | 05-Dec-17 | 535917 | GCMCOMM    | 13-Dec-17 |
| 521222 | SANBLUE    | 05-Dec-17 | 535431 | GCMSECU    | 13-Dec-17 |
| 517041 | ADORWELD   | 06-Dec-17 | 502958 | LAKSHMIMIL | 13-Dec-17 |
| 505690 | BRADYM     | 06-Dec-17 | 531515 | MAHANIN    | 13-Dec-17 |
| 517544 | CENTUM     | 06-Dec-17 | 515018 | REGENCERAM | 13-Dec-17 |
| 501391 | WHBRADY    | 06-Dec-17 | 530125 | SAMRATPH   | 13-Dec-17 |
| 514470 | WINSOMTX   | 06-Dec-17 | 519234 | SIEL       | 13-Dec-17 |
| 533221 | AHLWEST    | 07-Dec-17 | 526133 | SUPERTEX   | 13-Dec-17 |
| 506260 | ANUHPHR    | 07-Dec-17 | 512101 | TRIPR      | 13-Dec-17 |
| 531621 | CENTERAC   | 07-Dec-17 | 526488 | AARVINFRA  | 14-Dec-17 |
| 526445 | INDRANIB   | 07-Dec-17 | 517096 | APLAB      | 14-Dec-17 |
| 524774 | NGLFINE    | 07-Dec-17 | 530205 | BLJIGAL    | 14-Dec-17 |
| 534190 | OLPCL      | 07-Dec-17 | 512213 | CLASELE    | 14-Dec-17 |
| 532945 | SHRIRAMEPC | 07-Dec-17 | 531210 | COLINZ     | 14-Dec-17 |
| 533014 | SICAGEN    | 07-Dec-17 | 526355 | DUROPACK   | 14-Dec-17 |
| 521200 | SURYALAXMI | 07-Dec-17 | 538319 | GCMCAPI    | 14-Dec-17 |
| 524212 | WANBURY    | 07-Dec-17 | 530605 | GSLNOVA    | 14-Dec-17 |
| 526821 | DAICHI     | 08-Dec-17 | 531918 | HINDAPL    | 14-Dec-17 |
| 532847 | HILTON     | 08-Dec-17 | 523610 | ITI        | 14-Dec-17 |
| 509715 | JAYSHRETEA | 08-Dec-17 | 526558 | JAMEHOT    | 14-Dec-17 |

| Economic Calendar |                       |  |  |  |   |
|-------------------|-----------------------|--|--|--|---|
| Country           | Monday<br>20th Nov 17 | Tuesday<br>21th Nov 17   | Wednesday<br>22th Nov 17   | Thursday<br>23th Nov 17  | Friday<br>24th Nov 17   |
| US                | CB Leading Index m/m  | Existing Home Sales  | Core Durable Goods Orders m/m , Durable Goods Orders m/m , Crude Oil Inventories, FOMC Meeting Minutes | Unemployment Claims , Flash Manufacturing PMI , Flash Services PMI , Natural Gas Storage   | Revised UoM Consumer Sentiment , Revised UoM Inflation Expectations   |
| UK/EURO ZONE      | German PPI m/m        | ECB Financial Stability Review , Public Sector Net Borrowing , Consumer Confidence | French Prelim GDP q/q , German 30-y Bond Auction   | French Flash Manufacturing PMI , French Flash Services PMI , German Flash Manufacturing PMI , German Flash Services PMI, Flash Manufacturing PMI , Flash Services PMI , ECB Monetary Policy Meeting Accounts | German Ifo Business Climate , Italian Monthly Unemployment Rate, Italian Prelim CPI m/m, Belgian NBB Business Climate |
| INDIA             |                       |  |  |  |   |



## Narnolia Securities Ltd

201 | 2nd Floor | Marble Arch Building | 236B-AJC Bose  
Road | Kolkata-700 020 , Ph : 033-40501500

email: [narnolia@narnolia.com](mailto:narnolia@narnolia.com),  
website : [www.narnolia.com](http://www.narnolia.com)

**Risk Disclosure & Disclaimer:** This report/message is for the personal information of the authorized recipient and does not construe to be any investment, legal or taxation advice to you. Narnolia Securities Ltd. (Hereinafter referred as NSL) is not soliciting any action based upon it. This report/message is not for public distribution and has been furnished to you solely for your information and should not be reproduced or redistributed to any other person in any form. The report/message is based upon publicly available information, findings of our research wing "East wind" & information that we consider reliable, but we do not represent that it is accurate or complete and we do not provide any express or implied warranty of any kind, and also these are subject to change without notice. The recipients of this report should rely on their own investigations, should use their own judgment for taking any investment decisions keeping in mind that past performance is not necessarily a guide to future performance & that the the value of any investment or income are subject to market and other risks. Further it will be safe to assume that NSL and /or its Group or associate Companies, their Directors, affiliates and/or employees may have interests/ positions, financial or otherwise, individually or otherwise in the recommended/mentioned securities/mutual funds/ model funds and other investment products which may be added or disposed including & other mentioned in this report/message.