

SGX NIFTY : 7768.00 (6 Pt Down)

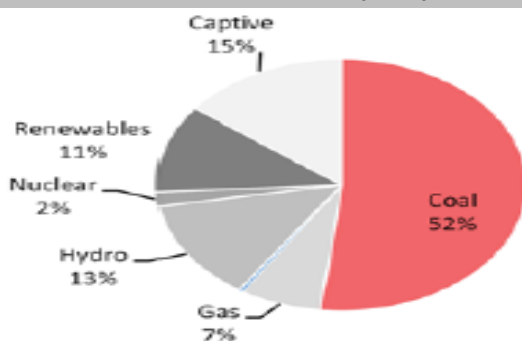
Quote of the Day

"Although I consider myself to be primarily in the quantitative school, the really sensational ideas I have had over the years have been heavily weighted toward the qualitative side where I have had a 'high-probability insight'. This is what causes the cash register to really sing."

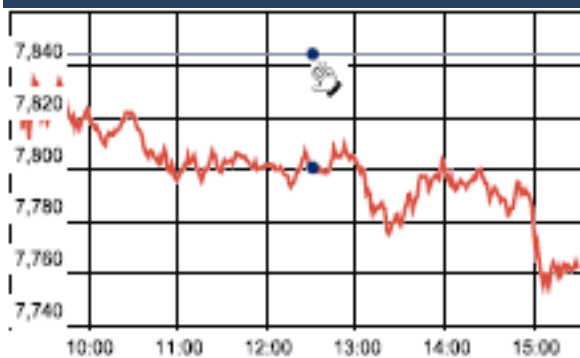
Warren Buffett

Chart of the Day

India Power Generation Capacity in FY15



Index Action Nifty (17th Dec 15)



Index

Contents	Page	Coverage
News	2	Update
Economic Calendar	3	Update

Market

Name	Value	Change
Sensex	25,519.22	(284.56)
Nifty	7761.95	(82.40)
DOW	17,128.45	(367.39)
NASDAQ	4,923.08	(79.47)
CAC	4,625.26	(52.48)
DAX	10,608.19	(129.33)
FTSE	6,052.42	(50.12)
NIKKEI	18,664.32	(322.48)
HANG SENG	21,832.09	76.25
EW ALL SHARE	13708.66	(72.65)

Institutional Turnover

FII

Investor	Buy(Cr.)	Sale(Cr.)	Net(Cr.)
18-Dec-15	5642.44	5649.43	(6.99)
Dec,15	42223.17	45998.39	(3775.22)
2015	1092865.71	1109481.42	(16615.71)

DII

Investor	Buy(Cr.)	Sale(Cr.)	Net(Cr.)
18-Dec-15	1448.04	1853.02	(404.98)
Dec,15	24215.60	16645.16	7570.44
2015	450047.87	385022.26	65025.61

Commodity Price

Commodity/Currencies	Value	
GOLD	25082.00	↑
SILVER	33933.00	↑
CRUDEOIL	35.81	↓
COPPER	313.30	↑
NATURALGAS	117.40	↓
DOLLAR/RS.	66.40	↓
EURO/RS.	72.09	↑
POUND/RS.	99.96	↑

Market Snapshot

Top Price Performers

Top Performers 1D	% Change	Top Performers 1W	% Change	Top Performers 1M	% Change
BIRLACOT	25.00	RAMANEWS	53.67	RAMANEWS	133.85
JINDCOT	20.00	SHIVACEM	42.76	BLKASHYAP	114.90
SYNCOM	19.92	RUBYMILLS	40.02	GEMINI	97.40
SIMPLEX	19.88	PIRLIFE	37.03	SHIVACEM	96.34
BVCL	19.76	SIMPLEX	34.67	INFODRIVE	86.67

Worst Performers 1D	% Change	Worst Performers 1W	% Change	Worst Performers 1M	% Change
CALSREF	(12.50)	SHRENUJ	(30.49)	AMTEKINDIA	(39.46)
AMTEKINDIA	(11.48)	AMTEKINDIA	(23.51)	SUDAR	(39.45)
GODFRYPHLP	(10.00)	COMMEXTECH	(13.87)	NCOPPER	(39.38)
ALOKTEXT	(9.26)	ADINATHBI	(13.64)	KGNIND	(39.12)
PRITI	(8.82)	GODFRYPHLP	(13.50)	SHRENUJ	(33.61)

Top News

• **Fund Action** : Clearwater Capital Partners Singapore Fund III Private Limited sold 3,00,000 shares of Diamond Power Infrastructure at Rs 42.68 on the NSE.

** Natwest Bank Plc As Trustee Of The Jupiter India Fund bought 6,97,500 shares of The Byke Hospitality at Rs 151 on the BSE and bought 6,97,500 shares at Rs 151 on the NSE.

** R.B.A Finance & Investment Co. bought 235,000 shares of APL Apollo Tubes at Rs 752.50 per share on the BSE.

** Samir Vallabhji Gosar bought 618,558 shares of Fervent Synergies at Rs 22.58 per share on the BSE.

• **Indian Oil Corp and Oil India** are in talks with Russia's Rosneft to buy up to a 29 percent stake in a Siberian oil project. The deal, which could be worth around \$1 billion based on the valuation of a recent stake purchase, is expected to take final shape during Prime Minister Narendra Modi's visit to Moscow next week for summit talks with President Vladimir Putin, said the sources with direct knowledge of the situation.

• **GIC Housing Finance** said it plans to raise Rs 800 crore by issuing non-convertible debentures on a private placement basis. The company has also decided to raise its borrowing powers to Rs 10,000 crore from Rs 8,000 crore. The resolutions were passed by company's shareholders after the postal ballot activity on December 15.

• **Titagarh Wagons** plans to bid for the entire tender and is hopeful of securing about 25 percent of the total order. Company is hoping to get orders for about 3,000-4,000 wagons. The expected bidding price could be about Rs 15-20 lakh per wagon. Margins would depend on how fiercely bidding takes place. There had been a streamlining of the approvals process in the Railway Board and that he expects the order to be finalized by January-February.

• **NIIT** has decided to set up an office in Norway. NIIT's Norway office was inaugurated recently in Bergen, Norway. With the establishment of this office, NIIT will be able to work more closely with its Scandinavian customers with onsite administrative support and real-time delivery.

• **Sun Pharma** has received a warning letter from the US FDA for its manufacturing facility based in Halol, Gujarat. The site is amongst the largest for Sun Pharma and is used to ship multiple formulations to the US. The facility was inspected by the US FDA in Sept. 2014 following which the agency had notified over 20 issues of violations of standard manufacturing norms.

• **IDBI Bank** plans to divest 20 percent in its life insurance JV with Ageas for Rs 800 cr

• **Euro zone current account fell** to a seasonally adjusted 20.4B, from 30.1B in the preceding month whose figure was revised up from 29.4B. Analysts had expected Euro zone current account to rise to 29.9B last month.

• **U.S. CB Leading Index** rose to a seasonally adjusted annual rate of 0.4%, from 0.6% in the preceding month. Analysts had expected U.S. CB Leading Index to rise 0.1% last month.

• **Canadian core CPI** fell to a seasonally adjusted -0.3%, from 0.3% in the preceding month. Analysts had expected Canadian core CPI to fall -0.1% last month.

• **Canadian consumer price inflation** fell to -0.1% on a seasonally adjusted monthly basis, from 0.1% in the preceding month. Analysts had expected Canadian consumer price inflation to rise 0.1% last month.

• **Canadian wholesale sales** fell to a seasonally adjusted -0.6%, from -0.3% in the preceding month whose figure was revised down from -0.1%. Analysts had expected Canadian wholesale sales to rise 0.1% last month.

• **CBI industrial trends orders** rose to -7, from -11 in the preceding month. Analysts had expected CBI industrial trends orders to rise to -10 last month.

Economic Calendar

Country	Monday 21th Dec 15	Tuesday 22th Dec 15	Wednesday 23th Dec 15	Thursday 24th Dec 15	Friday 25th Dec 15
US	Final GDP q/q , Final GDP Price Index q/q , HPI m/m , Flash Manufacturing PMI , Existing Home Sales , Richmond Manufacturing Index .	Core Durable Goods Orders m/m ,Core PCE Price Index m/m ,Durable Goods Orders m/m , Personal Spending m/m , New Home Sales , Crude Oil Inventories .	Unemployment Claims , Revised UoM Consumer Sentiment , Revised UoM Inflation Expectations , Natural Gas Storage .		Holiday
UK/EURO ZONE	French Flash Manufacturing PMI , GfK German Consumer Climate , French Flash Services PMI , German Flash Manufacturing PMI , German Flash Services PMI , Flash Manufacturing PMI , Flash Services PMI m, Public Sector Net Borrowing .	Current Account , Final GDP q/q , Core Retail Sales m/m , GDP m/m ,	BBA Mortgage Approvals .	Italian 10-y Bond Auction	Holiday
INDIA					



SEBI Registered Portfolio Manager

(Regn. No. : INP 000004011)

Narnolia Securities Ltd.

Narnolia Research Lab

Stellar IT Park | 5th Floor | Office Space No. 6 | Tower-II|nd Plot No. C-25 | Sector-62 | Noida | Ph : 0120-4215110

Central Strategy Desk - Kolkata

124 | 1st Floor | 7/1 Lords Sinha Road | Kolkata - 71
Ph : 033-22821500 | M : 93347 14418, 98302 69810