

SGX NIFTY : 7197 (3 Pt Down)

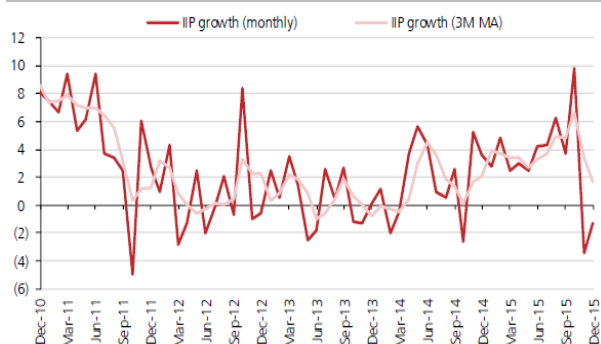
Quote of the Day

"We've long felt that the only value of stock forecasters is to make fortune tellers look good. Even now, Charlie (Munger) and I continue to believe that short-term market forecasts are poison and should be kept locked up in a safe place, away from children and also from grown-ups who behave in the market like children."

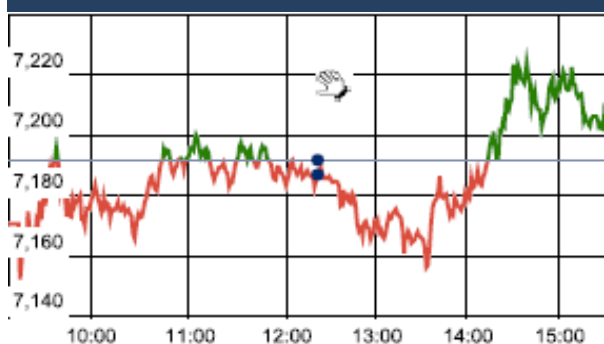
Warren Buffett

Chart of the Day

IIP Trend



Index Action Nifty (19th Feb 16)



Index

Contents	Page	Coverage
News	2	Update
Economic Calendar	3	Update

Market

Name	Value	Change
Sensex	23,709.15	59.93
Nifty	7210.75	19.00
DOW	16,391.00	-21.44
NASDAQ	4,504.43	16.89
CAC	4,223.04	(16.72)
DAX	9,388.05	(72.59)
FTSE	5,950.23	(21.72)
NIKKIE	15,967.17	-229.63
HANG SENG	19,285.00	(77.58)
EW ALL SHARE	12467.35	24.93

Instituional Turnover

FII

Investor	Buy(Cr.)	Sale(Cr.)	Net(Cr.)
19-Feb-16	2772.85	2964.58	(191.73)
Feb,16	49247.02	55903.49	(6656.47)
2016	120738.94	141751.42	(21012.48)

DII

Investor	Buy(Cr.)	Sale(Cr.)	Net(Cr.)
19-Feb-16	881.27	864.74	16.53
Feb,16	28412.64	22419.07	5993.57
2016	70117.11	51025.85	19091.26

Commodity Price

Commodity/Currencies	Value	
GOLD	29515.00	↑
SILVER	37517.00	↓
CRUDEOIL	32.16	↑
COPPER	316.05	↑
NATURALGAS	123.80	↓
DOLLAR/RS.	68.46	↑
EURO/RS.	76.27	↓
POUND/RS.	98.72	↑

Market Snapshot

Top Price Performers

Top Performers 1D	% Change	Top Performers 1W	% Change	Top Performers 1M	% Change
SHRIRAMEPC	17.55	GOKEX	37.63	NDTV	61.43
HINDCOMPOS	17.33	RUSHIL	35.73	INFODRIVE	52.78
RAMKY	13.71	DHARSUGAR	27.17	STOREONE	47.32
FORTIS	11.72	RAMKY	26.61	RUSHIL	45.05
TIDEWATER	11.48	NETWORK	25.85	LLOYDMETAL	35.19

Worst Performers 1D	% Change	Worst Performers 1W	% Change	Worst Performers 1M	% Change
VIKASGLOB	(17.72)	TREEHOUSE	(37.06)	PDUMJEPULP	(58.37)
SANWARIA	(9.05)	SUPREMEINF	(30.80)	AMTEKINDIA	(46.33)
USHDEVINT	(8.11)	SRSREAL	(26.19)	TREEHOUSE	(42.92)
RESPONIND	(7.28)	ELDERPHARM	(22.51)	AFL	(42.00)
RAMCOSYS	(7.01)	TFL	(22.49)	SRSREAL	(40.24)

Top News

- **The Centre's green panel** has given clearance to the state-owned ONGC for its Rs 1,752-crore project involving drilling of 406 development wells in oil fields in Gujarat's Cambay Basin. The proposed drilling is expected to be undertaken at the company's Ahmedabad asset located in Gandhinagar, Ahmedabad and Kheda districts. The asset currently produces 3,725 tonnes per day crude oil and 5.8 lakh cubic meters (m3) of natural gas on a daily basis.

- **ICRA** has revised downwards ratings of 5 bonds of Oriental Bank of Commerce (OBC) taking into consideration higher than anticipated bad loans. The revision in rating is on account of higher than anticipated stress, slower than expected pace of recovery and weak outlook for several credit intensive sectors which led to sharp deterioration in asset quality indicators of the bank and has impacted the earnings profile of the bank

- **RCF** is likely to get clearance from the Public Investment Board (PIB) for establishing a new urea plant at its current manufacturing facility at Thal in Maharashtra with an estimated investment of Rs 5,500 crore. As per the proposal, an ammonia-urea plant will be set up at Thal in Maharashtra with a capacity of 1.27 million tonnes per annum at the company's current manufacturing location. "The Rashtriya Chemicals and Fertilisers (RCF) is set to get PIB clearance for its brownfield expansion of its urea- ammonia plant at Thal in Maharashtra

- **Lupin Ltd** will divest two generic drugs sold by Gavis Pharmaceuticals LLC to clear antitrust hurdles related to its USD 880 million acquisition of the company, the US Federal Trade Commission

- **National Fertilisers Ltd (NFL)** said that the "board of directors of the company accorded in principle approval for equity participation of 11 percent in the revival of Sindri Unit of FCIL (Fertiliser Corporation of India Ltd)".

- **L&T Infrastructure Debt Fund** plans to raise Rs 400 crore through issue of non-convertible bonds. The company intends to issue secured, redeemable, non-convertible bonds of the face value of Rs 25 lakh each, amounting to Rs 300 crore.

- **HDFC Bank** said it is in the process of carrying out modifications to the structure of all the issuances amounting to about USD 1.2 billion done from Bahrain following lowering of the sovereign rating of the gulf nation. S&P lowered its long and short term foreign and local currency sovereign credit ratings on the Kingdom of Bahrain to BB/B (stable) from BBB-/A3 (negative)

- **Divis Laboratories Ltd** has had a successful inspection by the US-FDA for its Unit-2 at Chippada, Bheemunipatnam near Visakhapatnam during February, 2016 with no observations.

- **China's central bank** has injected a whopping 163 billion yuan into 20 financial institutions to ease liquidity strain in the world's second largest economy, currently witnessing sluggish growth. The People's Bank of China on Friday pumped 163 billion yuan (about USD 25 billion) into the financial system in open market operations via medium-term lending facility (MLF

- **Euro zone consumer confidence** fell to an annual rate of -8.8, from -6.3 in the preceding month. Analysts had expected Euro zone consumer confidence to fall -6.7 last month.

- **Canadian core retail sales** fell to a seasonally adjusted -1.6%, from 1.0% in the preceding month whose figure was revised down from 1.1%. Analysts had expected Canadian core retail sales to fall -0.5% last month.

- **Canadian consumer price inflation** rose to 0.2% on a monthly basis and before seasonal adjustment, from -0.5% in the preceding month.

- **Canadian manufacturing sales** rose to a seasonally adjusted 1.2%, from 1.0% in the preceding month. Analysts had expected Canadian manufacturing sales to rise 0.7% last month.

Economic Calendar

Country	Monday 15th Feb 16	Tuesday 16th Feb 16	Wednesday 17th Feb 16	Thursday 18th Feb 16	Friday 19th Feb 16
US	TIC Long-Term Purchases	Empire State Manufacturing Index , Mortgage Delinquencies , NAHB Housing Market Index.	Building Permits ,PPI m/m , FOMC Meeting Minutes , Industrial Production m/m , Capacity Utilization Rate , Housing Starts, FOMC Member Bullard Speaks.	Philly Fed Manufacturing Index ,Unemployment Claims , CB Leading Index m/m , Natural Gas Storage , Crude Oil Inventories .	CPI m/m ,Core CPI m/m .
UK/EURO ZONE	Trade Balance	German Constitutional Court Ruling , CPI y/y , German ZEW Economic Sentiment , ZEW Economic Sentiment.	Average Earnings Index 3m/y , Claimant Count Change ,	ECB Monetary Policy Meeting Accounts , Current Account , French 10-y Bond Auction .	Retail Sales m/m , Public Sector Net Borrowing , Consumer Confidence .
INDIA	WPI Data .				

Narnolia Research Lab

Stellar IT Park | 5th Floor | Office Space No. 6 | Tower-II Ind Plot No. C-25 | Sector-62 | Noida | Ph : 0120-4215110

Central Strategy Desk - Kolkata

124 | 1st Floor | 7/1 Lords Sinha Road | Kolkata - 71
Ph : 033-22821500 | M : 93347 14418, 98302 69810