

SGX NIFTY : 8383 ( 29 Pt Down )

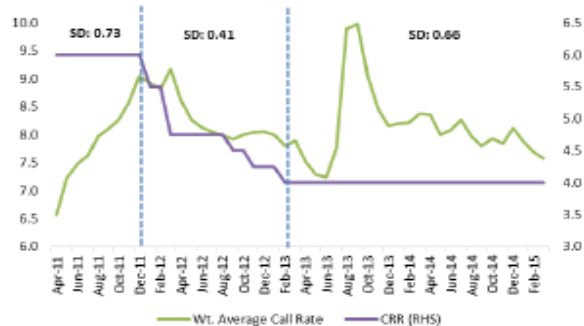
**Quote of the Day**

"An argument is made that there are just too many question marks about the near future; wouldn't it be better to wait until things clear up a bit?...face up to two unpleasant facts: The future is never clear [and] you pay a very high price for a cheery consensus. Uncertainty actually is the friend of the buyer of long term values."

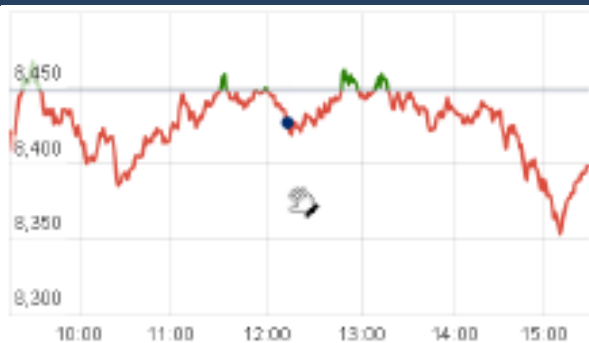
Warren Buffett

**Chart of the Day**

**CRR Rate Trend**



**Index Action Nifty ( 21th Apr 15 )**



**Index**

| Contents               | Page   | Coverage |
|------------------------|--------|----------|
| News                   | 2      | Update   |
| Economic Calendar      | 4      | Update   |
| Result Calendar Q4FY15 | 3 to 4 | Update   |

**Market**

| Name         | Value     | Change   |
|--------------|-----------|----------|
| Sensex       | 27,676.04 | (210.17) |
| Nifty        | 8377.75   | (70.35)  |
| DOW          | 17,949.45 | (85.34)  |
| NASDAQ       | 5,014.10  | 19.50    |
| CAC          | 5,192.64  | 5.05     |
| DAX          | 11,939.58 | 47.67    |
| FTSE         | 7,062.93  | 10.80    |
| NIKKEI       | 20,137.23 | 231.51   |
| HANG SENG    | 27,779.70 | (70.79)  |
| EW ALL SHARE | 14492.99  | (271.01) |

**Instituional Turnover**

**FII**

| Investor    | Buy(Cr.)  | Sale(Cr.) | Net(Cr.)  |
|-------------|-----------|-----------|-----------|
| 21th Apr,15 | 5954.52   | 7461.38   | (1506.86) |
| Apr,15      | 74888.93  | 57904.04  | 16984.89  |
| 2015        | 391896.36 | 350978.86 | 40917.50  |

**DII**

| Investor     | Buy(Cr.)  | Sale(Cr.) | Net(Cr.)  |
|--------------|-----------|-----------|-----------|
| 21th Apr ,15 | 3347.98   | 1983.15   | 1364.83   |
| Apr,15       | 22729.38  | 19469.71  | 3259.67   |
| 2015         | 137705.70 | 140420.72 | (2715.02) |

**Commodity Price**

| Commodity/Currencies | Value    | Change |
|----------------------|----------|--------|
| GOLD                 | 26947.00 | ↑      |
| SILVER               | 36186.00 | ↑      |
| CRUDEOIL             | 56.21    | ↓      |
| COPPER               | 374.40   | ↓      |
| NATURALGAS           | 162.00   | ↑      |
| DOLLAR/RS.           | 62.85    | ↓      |
| EURO/RS.             | 67.42    | ↓      |
| POUND/RS.            | 93.83    | ↑      |

## Market Snapshot

### Top Price Performers

| Top Performers 1D | % Change | Top Performers 1W | % Change | Top Performers 1M | % Change |
|-------------------|----------|-------------------|----------|-------------------|----------|
| SATRAPROP         | 19.96    | PRAKASHCON        | 47.74    | AANJANEYA         | 145.31   |
| IOLCP             | 19.91    | IOLCP             | 43.52    | ESSDEE            | 93.19    |
| DECNGOLD          | 19.86    | AANJANEYA         | 33.53    | AMTEKINDIA        | 88.59    |
| KALPENA           | 19.54    | RAIREKMOH         | 30.71    | GEMINI            | 87.50    |
| MIC               | 19.46    | SHIVACEM          | 29.81    | VENUSREM          | 81.95    |

### Worst Price Performers

| Worst Performers 1D | % Change | Worst Performers 1W | % Change | Worst Performers 1M | % Change |
|---------------------|----------|---------------------|----------|---------------------|----------|
| HOVS                | (20.00)  | HELIOSMATH          | (20.18)  | PRITI               | (46.31)  |
| ROHLTD              | (14.44)  | RSSOFTWARE          | (20.52)  | GLODYNE             | (43.80)  |
| JETKINGQ            | (9.96)   | AXIS-IT&T           | (22.58)  | SAMTEL              | (38.78)  |
| RESTILE             | (9.96)   | MAVENS BIO          | (25.56)  | SHLAKSHMI           | (37.73)  |
| PRAKASHCON          | (9.82)   | HOVS                | (28.00)  | DSINVEST            | (31.54)  |

## Top News

- **Rural Electrification Corporation Ltd** has now informed that Project Specific Special Purpose Vehicles (SPVs) have been incorporated, as wholly owned subsidiary Companies of REC Transmission Projects Company Limited (RECTPCL), a Wholly Owned Subsidiary Company of Rural Electrification Corporation Limited (RECL).
- **Neyveli Lignite Corporation Ltd** has informed that Unit II (250MW) of Thermal Power Station -II Expansion Project(2x250 MW) at Neyveli, which is the Nation's first project of this size with Circulating Fluidised Bed Combustion (CFBC) Boiler technology, has been successfully declared for commencement of commercial operation with effect from 00.00 Hours on April 22, 2015.
- **Sadbhav Infrastructure Project Limited ("SIPL")**, a company promoted by Sadbhav Engineering Limited ("SEL") has signed definitive Share Purchase Agreement ("SPA") for acquisition of 60% equity stake from HCC Concessions Limited, a group company of Hindustan Construction Company Limited in Dhule Palesnar Tollway Limited ("Company")
- **Westlife Development Ltd** has informed that Bengaluru First Stop on McCafe's Southward Journey in India - McDonald's Announces Launch of 3 McCafe's Across the City .
- **Aegis Logistics** has five distinct but related business segments and operates a network of bulk liquid terminals, liquefied petroleum gas terminals, filling plants, pipelines, and gas stations to deliver products and services.
- **KEI Industries** expects to clock export sales at Rs 250 crore in FY16 and retail sales at Rs 750-800 crore. Mgt is also expecting 20-25 percent growth turnover this fiscal.
- **Vodafone's** 5.6 percent stake sale in Bharti Airtel for over USD 1.6 billion has opened the front for a fresh run in with the Income-Tax Department.
- **The Maharashtra Government** today scrapped the Mumbai Development Plan 2015-2034 that proposed to hike the floor space index (FSI) to a maximum of 8. The government has also asked the Brihanmumbai Municipal Corporation to submit a reworked plan in four months.
- **Kotak Mahindra Bank** today said it has allotted 13.92 crore shares to the shareholders of ING Vysya Bank as part of the merger of the two lenders in an all-share deal.
- **Lupin Pharma Canada Limited**, the Canadian subsidiary of Lupin Limited, has launched its first brand product Zaxine under a strategic licensing agreement with the North Carolina based gastrointestinal (GI) specialty company Salix Pharmaceuticals Inc. The agreement grants Lupin exclusive rights to promote, distribute and market Zaxine in the Canada.
- **ZEW** said that Euro zone ZEW economic sentiment rose to a seasonally adjusted 64.8, from 62.4 in the preceding month . Analysts had expected Euro zone ZEW economic sentiment to rise to 63.7 last month.
- **Japan's index of leading economic indicators** rose to a seasonally adjusted 104.8, from 105.0 in the preceding month whose figure was revised down from 105.3. Analysts had expected Japan's index of leading economic indicators to rise 105.3 last month.
- **Statistics Canada** said wholesale sales declined by a seasonally adjusted 0.4% in February, disappointing expectations for a gain of 0.5%. Wholesale sales growth in January was revised to a decline of 2.9% from a previously reported drop of 3.1%.
- **ZEW said that Euro zone ZEW economic sentiment rose** to a seasonally adjusted 64.8, from 62.4 in the preceding month. Analysts had expected Euro zone ZEW economic sentiment to rise to 63.7 last month.

### Result Calendar Q4FY15

| BSE Code | Company Name | Date      | BSE Code | Company Name | Date      |
|----------|--------------|-----------|----------|--------------|-----------|
| 520119   | ASAL         | 22-Apr-15 | 531169   | SKPSEC       | 25-Apr-15 |
| 506390   | CLNINDIA     | 22-Apr-15 | 532538   | ULTRACEMCO   | 25-Apr-15 |
| 532913   | CSIL         | 22-Apr-15 | 531221   | MAYURFL      | 26-Apr-15 |
| 508906   | EVERESTIND   | 22-Apr-15 | 532418   | ANDHRABANK   | 27-Apr-15 |
| 500249   | KSBPUMPS     | 22-Apr-15 | 533573   | APLLTD       | 27-Apr-15 |
| 523704   | MASTEK       | 22-Apr-15 | 531591   | BAMPSL       | 27-Apr-15 |
| 500355   | RALLIS       | 22-Apr-15 | 531340   | BERVINL      | 27-Apr-15 |
| 517320   | SAVINFOCO    | 22-Apr-15 | 506894   | CHEMFALKAL   | 27-Apr-15 |
| 500405   | SUPPETRO     | 22-Apr-15 | 507886   | DHRUVES      | 27-Apr-15 |
| 532648   | YESBANK      | 22-Apr-15 | 523754   | EPCIN        | 27-Apr-15 |
| 532840   | ADVANTA      | 23-Apr-15 | 532183   | GAYATRI      | 27-Apr-15 |
| 502761   | BLUBLND-B    | 23-Apr-15 | 532482   | GRANULES     | 27-Apr-15 |
| 532792   | CAIRN        | 23-Apr-15 | 509675   | HIL          | 27-Apr-15 |
| 532443   | CERA         | 23-Apr-15 | 532174   | ICICIBANK    | 27-Apr-15 |
| 532175   | CYIENT       | 23-Apr-15 | 534816   | INFRATEL     | 27-Apr-15 |
| 533896   | FERVENTSYN   | 23-Apr-15 | 538835   | INTELLECT    | 27-Apr-15 |
| 523477   | GUJRATGAS    | 23-Apr-15 | 533148   | JSWENERGY    | 27-Apr-15 |
| 500179   | HCL-INSYS    | 23-Apr-15 | 500241   | KIRLOSBROS   | 27-Apr-15 |
| 500180   | HDFCBANK     | 23-Apr-15 | 532896   | MAGNUM       | 27-Apr-15 |
| 502330   | IPAPPM       | 23-Apr-15 | 532500   | MARUTI       | 27-Apr-15 |
| 533519   | L&TFH        | 23-Apr-15 | 512115   | ROSEMER      | 27-Apr-15 |
| 523457   | LINDEINDIA   | 23-Apr-15 | 500407   | SWARAJENG    | 27-Apr-15 |
| 532720   | M&MFIN       | 23-Apr-15 | 512070   | UPL          | 27-Apr-15 |
| 500290   | MRF          | 23-Apr-15 | 530197   | BAGADIA      | 28-Apr-15 |
| 532200   | MYSOREBANK   | 23-Apr-15 | 532454   | BHARTIARTL   | 28-Apr-15 |
| 532735   | RSYSTEMINT*  | 23-Apr-15 | 532548   | CENTURYPLY   | 28-Apr-15 |
| 532663   | SASKEN       | 23-Apr-15 | 533167   | COROENGG     | 28-Apr-15 |
| 500472   | SKFINDIA     | 23-Apr-15 | 500135   | ESSELPRO     | 28-Apr-15 |
| 533121   | SQSBFSI      | 23-Apr-15 | 532345   | GATI         | 28-Apr-15 |
| 506597   | AMAL         | 24-Apr-15 | 532424   | GODREJCP     | 28-Apr-15 |
| 511243   | CHOLAFIN     | 24-Apr-15 | 532822   | IDEA         | 28-Apr-15 |
| 505790   | FAGBEARING   | 24-Apr-15 | 532771   | JHS          | 28-Apr-15 |
| 500150   | FOSECOIND    | 24-Apr-15 | 500245   | KIRLFER      | 28-Apr-15 |
| 500189   | HINDUJAVEN   | 24-Apr-15 | 532400   | KPIT         | 28-Apr-15 |
| 530055   | HRMNYCP      | 24-Apr-15 | 538503   | MARICOKAYEL  | 28-Apr-15 |
| 535789   | IBULHSGFIN   | 24-Apr-15 | 532504   | NAVINFLUOR   | 28-Apr-15 |
| 532960   | IBVENTURES   | 24-Apr-15 | 504112   | NELCO        | 28-Apr-15 |
| 500209   | INFY         | 24-Apr-15 | 532498   | SHRIRAMCIT   | 28-Apr-15 |
| 500162   | PARRYSUGAR   | 24-Apr-15 | 538635   | SNOWMAN      | 28-Apr-15 |
| 513519   | PITTILAM-₹   | 24-Apr-15 | 517166   | SPELS        | 28-Apr-15 |
| 512529   | SEQUENT      | 24-Apr-15 | 500408   | TATAELXSI    | 28-Apr-15 |
| 500550   | SIEMENS      | 24-Apr-15 | 532144   | WELCORP      | 28-Apr-15 |
| 513262   | SSWL         | 24-Apr-15 | 504067   | ZENSARTECH   | 28-Apr-15 |
| 509930   | SUPREMEIND   | 24-Apr-15 | 500425   | AMBUJACEM    | 29-Apr-15 |
| 512595   | UNIMOVR      | 24-Apr-15 | 532523   | BIOCON       | 29-Apr-15 |
| 513729   | AROGRANITE-₹ | 25-Apr-15 | 511072   | DHFL         | 29-Apr-15 |
| 538713   | ATISHAY      | 25-Apr-15 | 500469   | FEDERALBNK   | 29-Apr-15 |
| 532522   | PETRONET     | 25-Apr-15 | 532622   | GDL          | 29-Apr-15 |

|        |              |           |        |              |           |
|--------|--------------|-----------|--------|--------------|-----------|
| 530141 | GYANDEV      | 29-Apr-15 | 532638 | SHOPERSTOP   | 30-Apr-15 |
| 500010 | HDFC         | 29-Apr-15 | 511218 | SRTRANSFIN   | 30-Apr-15 |
| 532129 | HEXAWARE     | 29-Apr-15 | 524204 | TEEAI        | 30-Apr-15 |
| 500233 | KAJARIACER   | 29-Apr-15 | 531652 | THIRDFIN     | 30-Apr-15 |
| 534690 | LAKSHVILAS   | 29-Apr-15 | 523868 | UBEINDL      | 30-Apr-15 |
| 513269 | MANINDS      | 29-Apr-15 | 513375 | CARBORUNIV   | 1-May-15  |
| 532366 | PNBGILTS     | 29-Apr-15 | 523708 | EIMCOELECO   | 1-May-15  |
| 531324 | ROSELABS     | 29-Apr-15 | 505700 | ELECON       | 1-May-15  |
| 532983 | RPLIFE       | 29-Apr-15 | 533088 | MHRIL        | 1-May-15  |
| 500674 | SANOFI       | 29-Apr-15 | 523756 | SREINFRA     | 1-May-15  |
| 500387 | SHREECEM     | 29-Apr-15 | 500300 | GRASIM       | 2-May-15  |
| 505827 | SNL          | 29-Apr-15 | 513709 | SHILGRAVQ-\$ | 2-May-15  |
| 531359 | SRAMSET      | 29-Apr-15 | 516030 | YASHPPR-\$   | 2-May-15  |
| 500295 | SSLT         | 29-Apr-15 | 504988 | ZWELCAST     | 2-May-15  |
| 501242 | TCIFINANCE   | 29-Apr-15 | 522134 | ARTSONEN     | 4-May-15  |
| 504966 | TINPLATE     | 29-Apr-15 | 533257 | INDOSOLAR    | 4-May-15  |
| 532343 | TVSMOTOR     | 29-Apr-15 | 532698 | NITINSPIN    | 4-May-15  |
| 531147 | ALICON       | 30-Apr-15 | 531768 | POLYMED      | 4-May-15  |
| 526125 | ARHNTTO      | 30-Apr-15 | 533228 | SKSMICRO     | 4-May-15  |
| 532493 | ASTRAMICRO   | 30-Apr-15 | 532953 | VGUARD       | 4-May-15  |
| 500027 | ATUL         | 30-Apr-15 | 505665 | ABCBEARS-\$  | 5-May-15  |
| 531994 | AUTOPINS     | 30-Apr-15 | 533108 | BTTL         | 5-May-15  |
| 532215 | AXISBANK     | 30-Apr-15 | 500280 | CENTENKA     | 5-May-15  |
| 531203 | BRANDREAL    | 30-Apr-15 | 500040 | CENTURYTEX   | 5-May-15  |
| 500085 | CHAMBLFERT   | 30-Apr-15 | 500096 | DABUR        | 5-May-15  |
| 506395 | COROMANDEL   | 30-Apr-15 | 526821 | DAICHI-\$    | 5-May-15  |
| 531155 | EPSOMPRO     | 30-Apr-15 | 509895 | HINDMILL     | 5-May-15  |
| 500086 | EXIDEIND     | 30-Apr-15 | 511208 | IVC          | 5-May-15  |
| 509567 | GOACARBON-\$ | 30-Apr-15 | 500247 | KOTAKBANK    | 5-May-15  |
| 533150 | GODREJPROP   | 30-Apr-15 | 521018 | MARALOVER    | 5-May-15  |
| 513343 | GRANDFONRY   | 30-Apr-15 | 532218 | SOUTHBANK    | 5-May-15  |
| 500185 | HCC          | 30-Apr-15 | 511676 | GICHSGFIN    | 6-May-15  |
| 532659 | IDFC         | 30-Apr-15 | 523874 | PRECISION    | 6-May-15  |
| 512329 | JARITEX      | 30-Apr-15 | 521234 | SRINACHA-\$  | 6-May-15  |
| 590003 | KARURVYSYA   | 30-Apr-15 | 531574 | VASINFRA     | 6-May-15  |
| 531692 | KHYATI       | 30-Apr-15 | 530063 | YASHRAJC     | 6-May-15  |
| 513605 | LANCO INDUST | 30-Apr-15 | 531581 | ALKADIA      | 7-May-15  |
| 500250 | LGBBROSLTD   | 30-Apr-15 | 500620 | GESHIP       | 7-May-15  |
| 533007 | LGBFORGE     | 30-Apr-15 | 534328 | HEXATRADEX   | 7-May-15  |
| 532313 | MAHLIFE      | 30-Apr-15 | 500378 | JINDALSAW    | 7-May-15  |
| 530243 | MANGASOF     | 30-Apr-15 | 500307 | NIRLON       | 7-May-15  |
| 531642 | MARICO       | 30-Apr-15 | 531209 | NUCLEUS      | 7-May-15  |
| 512103 | NIDHGRN      | 30-Apr-15 | 507753 | SREERAYA     | 7-May-15  |
| 500730 | NOCIL        | 30-Apr-15 | 504959 | STOVACQ      | 7-May-15  |
| 532481 | NOIDATOLL    | 30-Apr-15 | 500114 | TITAN        | 7-May-15  |
| 500313 | OILCOUNTUB   | 30-Apr-15 | 520113 | VESUVIUS     | 7-May-15  |
| 521080 | PASARI       | 30-Apr-15 | 526269 | CRSTCHM      | 8-May-15  |
| 532254 | POLARIS      | 30-Apr-15 | 505200 | EICHERMOT    | 8-May-15  |
| 500540 | PREMIER      | 30-Apr-15 | 507815 | GILLETTE     | 8-May-15  |
| 509423 | SEL          | 30-Apr-15 | 500165 | KANSAINER    | 8-May-15  |

|        |              |           |        |             |           |
|--------|--------------|-----------|--------|-------------|-----------|
| 524000 | MAGMA        | 8-May-15  | 532349 | TCI         | 25-May-15 |
| 524558 | NEULANDLAB   | 8-May-15  | 500133 | ESABINDIA   | 26-May-15 |
| 500459 | PGHH         | 8-May-15  | 526558 | JAMEHOT     | 26-May-15 |
| 532461 | PNB          | 8-May-15  | 512618 | RLF         | 26-May-15 |
| 505192 | SMLISUZU     | 8-May-15  | 500164 | GODREJIND   | 27-May-15 |
| 520056 | SUNCLAYLTD   | 8-May-15  | 500301 | NEPCMICON   | 27-May-15 |
| 530789 | CEEJAY       | 9-May-15  | 523236 | SHRENUJ     | 27-May-15 |
| 523411 | ADCINDIA     | 11-May-15 | 512153 | SPECMKT     | 27-May-15 |
| 530889 | ALKA         | 11-May-15 | 506655 | SUDARSCHEM  | 27-May-15 |
| 532047 | ASIANFILMS   | 11-May-15 | 509038 | VOLLF       | 27-May-15 |
| 532756 | MAHINDCIE    | 11-May-15 | 500008 | AMARAJABAT  | 28-May-15 |
| 532390 | TAJGVK       | 11-May-15 | 508939 | BLCISER     | 28-May-15 |
| 500877 | APOLLOTYRE   | 12-May-15 | 506405 | DHARAMSI    | 28-May-15 |
| 500477 | ASHOKLEY     | 12-May-15 | 530779 | DYNAMICP    | 28-May-15 |
| 534804 | CARERATING   | 12-May-15 | 531463 | GBLINFRA    | 28-May-15 |
| 500124 | DRREDDY      | 12-May-15 | 531737 | GREENCREST  | 28-May-15 |
| 500144 | FINCABLES    | 12-May-15 | 511092 | JMDTELEFILM | 28-May-15 |
| 500266 | MAHSCOOTER   | 12-May-15 | 506113 | LIFELINE    | 28-May-15 |
| 503772 | MODWOOL      | 12-May-15 | 530557 | NCLRESE     | 28-May-15 |
| 517334 | MOTHERSUMI   | 12-May-15 | 505250 | GGDANDE     | 29-May-15 |
| 534369 | TBZ          | 12-May-15 | 500202 | INDLEASE    | 29-May-15 |
| 514142 | TTL-Ş        | 13-May-15 | 538422 | JACKSON     | 29-May-15 |
| 523736 | DPL          | 14-May-15 | 535730 | KHOBSURAT   | 29-May-15 |
| 517044 | IDM          | 14-May-15 | 523323 | KOVAI       | 29-May-15 |
| 506767 | ALKYLAMINE   | 15-May-15 | 500520 | M&M         | 29-May-15 |
| 500420 | TORNTPHARM   | 15-May-15 | 501343 | MOTOFENFIN  | 29-May-15 |
| 534742 | ZUARI        | 15-May-15 | 532777 | NAUKRI      | 29-May-15 |
| 500780 | ZUARIGLOB    | 15-May-15 | 531049 | NEELKAN     | 29-May-15 |
| 532133 | IFGLREFRAC   | 16-May-15 | 500333 | PIXTRANS    | 29-May-15 |
| 534184 | NAGAROIL     | 16-May-15 | 535514 | PRIMECAPM   | 29-May-15 |
| 526721 | NICCOPAR-Ş   | 16-May-15 | 532915 | RELIGARE    | 29-May-15 |
| 532527 | RKFORGE      | 16-May-15 | 508963 | STRLGUA     | 29-May-15 |
| 532410 | TRANSCOR     | 18-May-15 | 521226 | UNIROYAL    | 29-May-15 |
| 590043 | HARITASEAT-Ş | 19-May-15 | 531831 | UNISH       | 29-May-15 |
| 532978 | BAJAJFINSV   | 20-May-15 | 526941 | VAICC       | 29-May-15 |
| 500034 | BAJFINANCE   | 20-May-15 | 511690 | WARNER      | 29-May-15 |
| 532977 | BAJAJ-AUTO   | 21-May-15 | 512587 | ZODJRD MJ   | 29-May-15 |
| 500490 | BAJAJHLDNG   | 21-May-15 | 531223 | ANJANI-Ş    | 30-May-15 |
| 500414 | TIMEX-Ş      | 21-May-15 | 532352 | KIRLMU      | 30-May-15 |
| 532156 | VAIBHAVGBL   | 21-May-15 | 532537 | LUMAXAUTO   | 30-May-15 |
| 500452 | NEPCAGRO     | 22-May-15 | 526251 | MIDEASTP    | 30-May-15 |
| 531077 | NEPCPAPER    | 22-May-15 | 526891 | MKTCREAT    | 30-May-15 |
| 521192 | NEPCTEX      | 22-May-15 | 521246 | PARASPETRO  | 30-May-15 |
| 522113 | TIMKEN       | 22-May-15 | 531931 | SAICAPI     | 30-May-15 |
| 532644 | JKCEMENT     | 23-May-15 | 530905 | SAINDUS     | 30-May-15 |
| 530835 | ELTROL       | 25-May-15 | 530125 | SAMRATPH-Ş  | 30-May-15 |
| 531528 | MAARSOFTW    | 25-May-15 | 524703 | SANDUPHQ    | 30-May-15 |
| 531319 | MARUTISE     | 25-May-15 | 524103 | LINEARPO    | 31-May-15 |
|        |              |           | 511626 | RRFIN       | 14-Dec-15 |

| Country      | Monday<br>20 April 15   | Tuesday<br>21 April 15   | Wednesday<br>22 April 15   | Thursday<br>23 April 15  | Friday<br>24 April 15  |
|--------------|---|--|--|--|--|
| US           | CB Leading Index m/m .  |  | Existing Home Sales , Crude Oil Inventories .                      | Unemployment Claims , New Home Sales , Natural Gas Storage .                 | Core Durable Goods Orders m/m ,Durable Goods Orders m/m , Revised UoM Consumer Sentiment . |
| UK/EURO ZONE | French Flash Manufacturing PMI ,French Flash Services PMI , German Flash Manufacturing PMI , German Flash Services PMI , Flash Manufacturing PMI , Flash Services PMI . | CPI y/y , German ZEW Economic Sentiment , ZEW Economic Sentiment , PPI Input m/m , RPI y/y . | MPC Official Bank Rate Votes , MPC Asset Purchase Facility Votes . | Spanish Unemployment Rate , German Ifo Business Climate , Retail Sales m/m . | Belgian NBB Business Climate .   |
| INDIA        |   |  |  |  |  |

### Result Q4FY15

| NSE CODE   | BSE CODE | SALES Rs (cr.) | SALES YOY | PAT Rs Cr | PAT YOY |
|------------|----------|----------------|-----------|-----------|---------|
| HCLTECH    | 532281   | 4385.95        | 8.4       | 1564.74   | 10.77   |
| RAMCOSYS   | 532370   | 101            | 33.2      | 4.35      | 935.7   |
| TATASPONGE | 513010   | 160.33         | -32.2     | 8.57      | -78.83  |
| PERSISTENT | 533179   | 515.7          | 15.4      | 76        | 13.1    |
| SYMPHONY   | 517385   | 146.29         | 25.8      | 36.51     | 35.07   |

**Risk Disclosure & Disclaimer :** This report/message is for the personal information of the authorized recipient and does not construe to be any investment, legal or taxation advice to you. Narnolia Securities Ltd. (Hereinafter referred as NSL) is not soliciting any action based upon it. This report/message is not for public distribution and has been furnished to you solely for your information and should not be reproduced or redistributed to any other person in any form. The report/message is based upon publicly available information, findings of our research wing "East wind" & information that we consider reliable, but we do not represent that it is accurate or complete and we do not provide any express or implied warranty of any kind, and also these are subject to change without notice. The recipients of this report should rely on their own investigations, should use their own judgment for taking any investment decisions keeping in mind that past performance is not necessarily a guide to future performance & that the the value of any investment or income are subject to market and other risks. Further it will be safe to assume that NSL and /or its Group or associate Companies, their Directors, affiliates and/or employees may have interests/positions, financial or otherwise, individually or otherwise in the recommended/mentioned securities/mutual funds/ model funds and other investment products which may be added or disposed including & other mentioned in this report/message. NSL or any of its affiliates or employees shall not be in any way responsible for any loss or damage that may arise to any person from any action taken based on the above information or inadvertent error in the information contained in this report/message

## Narnolia Securities Ltd.

|  |  |
|--|--|
| <p><b>Narnolia Research Lab</b><br/>Stellar IT Park   5th Floor   Office Space No. 6   Tower-IIInd Plot No. C-25   Sector-62   Noida   Ph : 0120-4215110</p> | <p><b>Central Strategy Desk - Kolkata</b><br/>124   1st Floor   7/1 Lords Sinha Road   Kolkata - 71<br/>Ph : 033-22821500   M : 93347 14418, 98302 69810</p> |
|--|--|