

SGX NIFTY : 7914.50 (10 Pt Up)

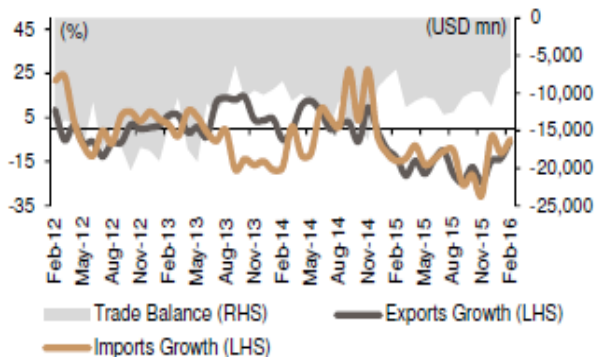
Quote of the Day

"An argument is made that there are just too many question marks about the near future; wouldn't it be better to wait until things clear up a bit?...face up to two unpleasant facts: The future is never clear [and] you pay a very high price for a cheery consensus. Uncertainty actually is the friend of the buyer of long term values."

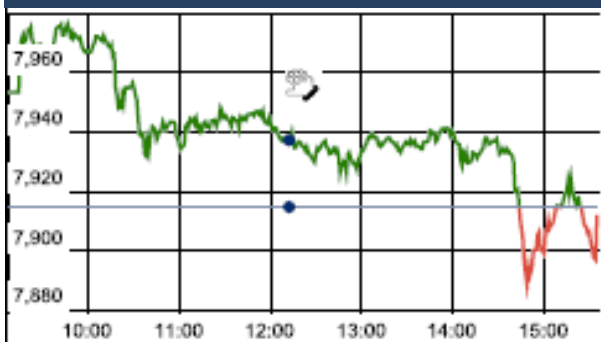
Warren Buffett

Chart of the Day

Trade Deficit %



Index Action Nifty (21th Apr 16)



Index

Contents	Page	Coverage
News	2	Update
Economic Calendar	3	Update

Market

Name	Value	Change
Sensex	25,880.38	36.20
Nifty	7912.05	(2.70)
DOW	17,602.30	120.81
NASDAQ	4,945.89	(2.24)
CAC	4,582.83	(9.09)
DAX	10,453.73	14.44
FTSE	6,381.44	(28.82)
NIKKEI	17,347.36	(16.26)
HANG SENG	21,480.13	(142.12)
EW ALL SHARE	13689.27	(36.96)

Instituional Turnover

FII

Investor	Buy(Cr.)	Sale(Cr.)	Net(Cr.)
21-Apr-16	5625.66	4820.24	805.42
Mar,16	77057.77	61888.65	15169.12
2016	220195.23	231238.31	(11043.08)

DII

Investor	Buy(Cr.)	Sale(Cr.)	Net(Cr.)
21-Apr-16	2168.30	2102.58	65.72
Mar,16	21356.30	30887.02	(9530.72)
2016	103271.27	88351.22	14920.05

Commodity Price

Commodity/Currencies	Value	
GOLD	29357.00	↑
SILVER	40056.00	↓
CRUDEOIL	41.45	↑
COPPER	330.35	↑
NATURALGAS	138.60	↓
DOLLAR/RS.	66.39	↑
EURO/RS.	75.14	↑
POUND/RS.	95.40	↑

Market Snapshot

Top Price Performers

Top Performers 1D	% Change	Top Performers 1W	% Change	Top Performers 1M	% Change
BIRLACOT	25.00	OISL	59.27	KAKATCEM	129.38
OISL	19.71	MSPL	54.88	KIRIINDUS	95.97
CALSREF	16.67	BHARTISHIP	51.34	ELECTHERM	89.36
TRIL	15.28	ELECTHERM	36.05	UTTAMSUGAR	77.50
JAYBARMARU	11.77	NEXTMEDIA	35.21	UGARSUGAR	73.77

Worst Performers 1D	% Change	Worst Performers 1W	% Change	Worst Performers 1M	% Change
TIL	(13.00)	LLOYDMETAL	(18.03)	VIVIMEDLAB	(79.25)
LPDC	(11.03)	SHRENUJ	(17.79)	RAINBOWPAP	(62.10)
REMIMETAL	(8.21)	RAINBOWPAP	(17.21)	SHREEKRPOL	(41.03)
EMPEESUG	(8.12)	SRSREAL	(17.21)	RICOHQ	(37.62)
NEXTMEDIA	(7.11)	SANCIA	(16.67)	BILPOWER	(29.63)

Top News

- **Alembic Pharmaceuticals** entered into a joint venture with Orbicular Pharmaceutical to develop, manufacture and commercialise dermatology products for global markets. APL and Orbicular will own 60 percent and 40 percent of the equity capital of Aleor when the transaction is completed.

- **The UK government** announced it is willing to acquire 25 percent stake in Tata Steel 's UK operations to help potential buyers eyeing ownership of the Indian steel giant's loss-making plants. The money "worth hundreds of millions of pounds" is being put up jointly by the UK and Welsh governments and will be made available to potential buyers as part of a support package for the crisis-hit steel industry

- **Gitanjali Mgt Guideline** : Commerce Ministry's move to make available duty-free gold import in the domestic tariff will be a big advantage for the domestic sector . The move will help the gold exporters to reduce their working capital by 11 percent as well as the save on the interest cost . The scheme works very similar to how a gold metal loan works. It will allow the gold jewellery exporters to encash bank guarantees immediately post exports

- **Transformers and Rectifiers (India) Mgt guideline** : Orders for power generation equipments have seen a sudden surge due to a strong performance in the power distribution and transmission segment, including NTPC . Roll out of tenders by Power Grid, NTPC and various utilities have also gone up . 70 percent of the company's capacity is booked for FY17. The orderbook for the company in third quarter was Rs 250 crore and on April 1, the orderbook jumped to Rs 1,000 crore, which is only 70 percent of the total capacity of the company. The company has capability to manufacture transformers upto 1000 MVA, 1200 KV class. Mamtara expects some major tenders coming in this month.

- **GAIL India Ltd** will swap one-third of the liquefied natural gas (LNG) it has contracted from the US with a gas seller nearer to the country to save on transportation costs. GAIL, in two deals, contracted 5.3 million tonnes a year of super-cooled gas (LNG) from the US starting 2018. Of this, it reckons 3-3.5 million tonnes will be shipped to India for consumption by local industries like power and fertiliser plants.

- **Shemaroo Entertainment** has tied up with Dish TV to launch a new premium service called Miniplex. This is a movie service which will premiere latest movies every for subscription fee of Rs 60 per month. This service, which is still in its build up phase, will boost company's profits in FY18 . The company is looking to tie up with other non-DTH platform as well

- **IL&FS Transportation Networks Mgt Guideline** : The National Highway Authority in India (NHAI), on Wednesday, raised its road construction target for FY17, which seems achievable with the amount of Budget allocated to the sector this year . While the construction target has been set at 15,000 km for the new fiscal year, about 25,000 km has been pegged as a target for awarding national highways projects.

- **Philly Fed manufacturing index** fell to a seasonally adjusted -1.6, from 12.4 in the preceding month. Analysts had expected Philly Fed manufacturing index to rise 8.9 last month.

- **U.S. Department of Labor said the number** of individuals filing for initial jobless benefits in the week ending April 16 decreased by 6,000 to a seasonally adjusted 24,000 from the previous week's total of 253,000. Analysts had expected jobless claims to rise by 10,000 to 263,000 last week.

- **U.K. Office for National Statistics** said that retail sales fell 1.3% in March, compared to the prior 0.5% drop whose figure was revised from the original 0.4% decrease. Analysts had expected retail sales to slip 0.1% last month.

- **U.K. Public Sector Net Borrowing** fell to a seasonally adjusted 4.16B, from 6.33B in the preceding quarter whose figure was revised down from 6.49B. Analysts had expected U.K. Public Sector Net Borrowing to fall to 5.50B in the last quarter.

Result Calendar Q4FY16

BSE Code	Company Name	Date	BSE Code	Company Name	Date
506597	AMAL	22-Apr-16	500670	GNFC	26-Apr-16
522134	ARTSONEN	22-Apr-16	539437	IDFCBANK	26-Apr-16
532459	AUNDEIND	22-Apr-16	534816	INFRATEL	26-Apr-16
532792	CAIRN	22-Apr-16	533402	INNOIND	26-Apr-16
500089	DICIND	22-Apr-16	500249	KSBPUMPS	26-Apr-16
526227	FILATEX	22-Apr-16	532313	MAHLIFE	26-Apr-16
500180	HDFCBANK	22-Apr-16	514418	MANORG	26-Apr-16
502330	IPAPPM	22-Apr-16	532500	MARUTI	26-Apr-16
532756	MAHINDCIE	22-Apr-16	532200	MYSOREBANK	26-Apr-16
500325	RELIANCE	22-Apr-16	500355	RALLIS	26-Apr-16
532663	SASKEN	22-Apr-16	500330	RAYMOND	26-Apr-16
504960	STEWARTQ	22-Apr-16	538635	SNOWMAN	26-Apr-16
511736	USHDI	22-Apr-16	500407	SWARAJENG	26-Apr-16
516030	YASHPPR	22-Apr-16	539268	SYNGENE	26-Apr-16
504067	ZENSARTECH	22-Apr-16	533573	APLLTD	27-Apr-16
514394	AJIL	23-Apr-16	532454	BHARTIARTL	27-Apr-16
531268	B2BSOFT	23-Apr-16	500878	CEATLTD	27-Apr-16
531595	CGCL	23-Apr-16	506395	COROMANDEL	27-Apr-16
522245	IYKOTHITE	23-Apr-16	507886	DHRUVES	27-Apr-16
539216	JUNCTION	23-Apr-16	523708	EIMCOELECO	27-Apr-16
532720	M&MFIN	23-Apr-16	505700	ELECON	27-Apr-16
526935	MBPARIKH	23-Apr-16	523754	EPCIN	27-Apr-16
531626	OROSMITHS	23-Apr-16	500086	EXIDEIND	27-Apr-16
517447	RSSOFTWARE	23-Apr-16	505790	FAGBEARING	27-Apr-16
539346	SADBHIN	23-Apr-16	500150	FOSECOIND	27-Apr-16
511640	SANGHCO	23-Apr-16	532345	GATI	27-Apr-16
533179	PERSISTENT	24-Apr-16	532622	GDL	27-Apr-16
500002	ABB	25-Apr-16	509675	HIL	27-Apr-16
533167	COROENGG	25-Apr-16	532706	INOXLEISUR	27-Apr-16
532848	DELTACORP	25-Apr-16	533148	JSWENERGY	27-Apr-16
526899	HIMIN	25-Apr-16	500165	KANSAINER	27-Apr-16
532832	IBREALST	25-Apr-16	505283	KIRLPNU	27-Apr-16
535789	IBULHSGFIN	25-Apr-16	532400	KPIT	27-Apr-16
532191	SBT	25-Apr-16	534690	LAKSHVILAS	27-Apr-16
531201	SHILCTECH	25-Apr-16	532710	SADBHAV	27-Apr-16
513010	TATASPONGE	25-Apr-16	522034	SHANTIGEAR	27-Apr-16
532538	ULTRACEMCO	25-Apr-16	532498	SHRIRAMCIT	27-Apr-16
524661	WELCURE	25-Apr-16	530017	SIL	27-Apr-16
514162	WELSPUNIND	25-Apr-16	506105	STANROS	27-Apr-16
506235	ALEMBICLTD	26-Apr-16	501370	WALCHPF	27-Apr-16
500215	ATFL	26-Apr-16	532648	YESBANK	27-Apr-16
532215	AXISBANK	26-Apr-16	500410	ACC	28-Apr-16
531340	BERVINL	26-Apr-16	500425	AMBUJACEM	28-Apr-16
532523	BIOCON	26-Apr-16	520119	ASAL	28-Apr-16
511505	CAPITALT	26-Apr-16	511196	CANFINHOME	28-Apr-16
532365	DSSL	26-Apr-16	500096	DABUR	28-Apr-16
530079	FAZE3Q	26-Apr-16	532482	GRANULES	28-Apr-16

531410	GUJFOIL	28-Apr-16	516062	NATPLY	30-Apr-16
500185	HCC	28-Apr-16	532504	NAVINFUOR	30-Apr-16
532281	HCLTECH	28-Apr-16	500452	NEPCAGRO	30-Apr-16
532822	IDEA	28-Apr-16	500301	NEPCMICON	30-Apr-16
500233	KAJARIACER	28-Apr-16	531077	NEPCPAPER	30-Apr-16
539276	KAYA	28-Apr-16	521192	NEPCTEX	30-Apr-16
532889	KPRMILL	28-Apr-16	514454	SOUTLAT	30-Apr-16
500307	NIRLON	28-Apr-16	530565	SSLFINANCE	30-Apr-16
538771	PINCON	28-Apr-16	524204	TEEAI	30-Apr-16
507300	RAVALSUGAR	28-Apr-16	523868	UBEINDL	30-Apr-16
531169	SKPSEC	28-Apr-16	531147	ALICON	02-May-16
533121	SQSBFSI	28-Apr-16	500010	HDFC	02-May-16
531359	SRAMSET	28-Apr-16	533519	L&T;TFH	02-May-16
513262	SSWL	28-Apr-16	507912	LKPFIN	02-May-16
500408	TATAELXSI	28-Apr-16	500264	MAFATIND	02-May-16
501242	TCIFINANCE	28-Apr-16	534369	TBZ	02-May-16
500295	VEDL	28-Apr-16	509438	BENARAS	03-May-16
505412	WENDT	28-Apr-16	500040	CENTURYTEX	03-May-16
530117	ADIFINCHM	29-Apr-16	532443	CERA	03-May-16
532331	AJANTPHARM	29-Apr-16	532424	GODREJCP	03-May-16
532493	ASTRAMICRO	29-Apr-16	538835	INTELLECT	03-May-16
500027	ATUL	29-Apr-16	511208	IVC	03-May-16
511243	CHOLAFIN	29-Apr-16	500290	MRF	03-May-16
508906	EVERESTIND	29-Apr-16	532481	NOIDATOLL	03-May-16
500033	FORCEMOT	29-Apr-16	532638	SHOPERSTOP	03-May-16
511676	GICHSGFIN	29-Apr-16	520086	SICAL	03-May-16
519126	HNDFDS	29-Apr-16	532343	TVSMOTOR	03-May-16
532174	ICICIBANK	29-Apr-16	513375	CARBORUNIV	04-May-16
532659	IDFC	29-Apr-16	500280	CENTENKA	04-May-16
539448	INDIGO	29-Apr-16	532129	HEXAWARE	04-May-16
500245	KIRLIFER	29-Apr-16	504112	NELCO	04-May-16
523457	LINDEINDIA	29-Apr-16	535754	ORIENTCEM	04-May-16
532983	RPGLIFE	29-Apr-16	533228	SKSMICRO	04-May-16
500674	SANOFI	29-Apr-16	532513	TVSELECT	04-May-16
501061	SBBJ	29-Apr-16	520113	VESUVIUS	04-May-16
511218	SRTRANSFIN	29-Apr-16	532953	VGUARD	04-May-16
531003	SWRNASE	29-Apr-16	531162	EMAMILTD	05-May-16
513434	TATAMETALI	29-Apr-16	507815	GILLETTE	05-May-16
504966	TINPLATE	29-Apr-16	533150	GODREJPROP	05-May-16
500429	UNIPHOS	29-Apr-16	500211	INSILCO	05-May-16
512070	UPL	29-Apr-16	532529	NDTV	05-May-16
534392	VSSL	29-Apr-16	500730	NOCIL	05-May-16
513729	AROGRANITE	30-Apr-16	500459	PGHH	05-May-16
500469	FEDERALBNK	30-Apr-16	504961	TATAYODOGA	05-May-16
524226	GAEL	30-Apr-16	512297	WHELTEX	05-May-16
590025	GINNIFILA	30-Apr-16	590013	XPROINDIA	05-May-16
500250	LGBBROSLTD	30-Apr-16	522004	BATLIBOI	06-May-16
533007	LGBFORGE	30-Apr-16	501455	GREAVESCOT	06-May-16
530243	MANGASOF	30-Apr-16	502420	ORIENTPPR	06-May-16

500550	SIEMENS	06-May-16	523642	PIIND	24-May-16
511632	OLYMTFI	07-May-16	519174	ASHAI	25-May-16
519091	TASTYBIT	07-May-16	532977	BAJAJ-AUTO	25-May-16
505665	ABCBEARS	10-May-16	500490	BAJAJHLDNG	25-May-16
532548	CENTURYPLY	10-May-16	500660	GLAXO	25-May-16
511728	KZLFIN	10-May-16	500164	GODREJIND	25-May-16
539353	SWARAJAUTO	10-May-16	533217	HMVL	25-May-16
500877	APOLLOTYRE	11-May-16	532777	NAUKRI	25-May-16
500085	CHAMBLFERT	11-May-16	530073	SANGHVIMOV	25-May-16
500247	KOTAKBANK	11-May-16	533158	THANGAMAYL	25-May-16
509220	PTL	11-May-16	500144	FINCABLES	26-May-16
533553	TDPOWERSYS	11-May-16	517300	GIPCL	26-May-16
500124	DRREDDY*	12-May-16	532662	HTMEDIA	26-May-16
531213	MANAPPURAM	12-May-16	500387	SHREECEM	26-May-16
500790	NESTLEIND	12-May-16	531652	THIRDFIN	26-May-16
520056	SUNCLAYLTD	12-May-16	500414	TIMEX	26-May-16
524378	JMDEPACKR	13-May-16	522261	DOLPHINOFF	27-May-16
526947	LAOPALA	13-May-16	531049	NEELKAN	27-May-16
506590	PHILIPCARB	13-May-16	505800	RANEHOLDIN	27-May-16
532410	TRANSCOR	13-May-16	506655	SUDARSICHEM	27-May-16
534742	ZUARI	13-May-16	508939	BLCISER	28-May-16
500780	ZUARIGLOB	13-May-16	538319	GCMCAPI	28-May-16
532166	ALKASEC	14-May-16	511092	JMDTELEFILM	28-May-16
532133	IFGLREFRAC	14-May-16	530557	NCLRESE	28-May-16
590130	KANCOTEA	14-May-16	533202	NITESHST	28-May-16
517334	MOTHERSUMI	17-May-16	524038	VENLONENT	28-May-16
517562	TRIGYN	17-May-16	509038	VOLLF	28-May-16
500228	JSWSTEEL	18-May-16	531175	BLSINFOTE	30-May-16
524212	WANBURY	18-May-16	500067	BLUESTARCO	30-May-16
532173	CYBERTECH	19-May-16	531458	BOSTONBIO	30-May-16
500133	ESABINDIA	19-May-16	539131	CLLIMITED	30-May-16
532988	RANEENGINE	19-May-16	507833	COMPUPN	30-May-16
533023	WABCOINDIA	19-May-16	531270	DAZZEL	30-May-16
500038	BALRAMCHIN	20-May-16	535917	GCMCOMM	30-May-16
505737	INTLCOMBQ	20-May-16	535431	GCMSECU	30-May-16
506943	JBCHEPHARM	20-May-16	530263	GLOBALCA	30-May-16
517344	MINDTECK	20-May-16	531608	GORANIN	30-May-16
524558	NEULANLAB	20-May-16	531737	GREENCREST	30-May-16
532661	RML	20-May-16	511543	GSBFIN	30-May-16
522113	TIMKEN	20-May-16	524754	GUJMEDI	30-May-16
506690	UNICHEMLAB	20-May-16	532851	INSECTICID	30-May-16
526775	VALIANT	20-May-16	538422	JACKSON	30-May-16
533470	RUSHIL	21-May-16	530405	JINDCAP	30-May-16
521240	SAMBANDAM	21-May-16	539446	KRISHFAB	30-May-16
500266	MAHSCOOTER	23-May-16	531164	LADIAMO	30-May-16
532987	RBL	23-May-16	506113	LIFELINE	30-May-16
532978	BAJAJFINSV	24-May-16	531319	MARUTISE	30-May-16
500034	BAJFINANCE	24-May-16	514332	NEOINFRA	30-May-16
523736	DPL	24-May-16	535514	PRIMECAPM	30-May-16

530125	SAMRATPH	30-May-16	531831	UNISH	30-May-16
526532	SFPIL	30-May-16	531762	UNJHAFOR	30-May-16
531411	TUNITEX	30-May-16	539123	VBIND	30-May-16
521226	UNIROYAL	30-May-16	511690	WARNER	30-May-16

EARNING ESTIMATE Q4FY16

BSE Code	Company Name	SALES (Cr.)	SALES Growth	PAT (Cr.)	PAT Growth
500188	HINDZINC	2804	-32.00	1327	-33.90
532792	CAIRN	1690	-36.90	-40	PL
532175	CYIENT	820	12.30	101	7.60
532819	MINDTREE	1300	41.60	147	14.50
532540	TCS	28457	17.50	6196	4.90
507685	WIPRO	13735	13.10	2215	-2.60
500180	HDFCBANK	7206	19.80	3370	20.10
532187	INDUSINDBK	1203	30.00	628	26.80
511288	GRUH	157	28.10	86	15.70
500253	LICHSGFIN	878	35.10	482	27.50
532720	M&MFIN	936	6.00	258	-22.70

RESULT Q4FY16

BSE Code	Company Name	SALES (Cr.)	SALES Growth	PAT (Cr.)	PAT Growth
532798	NETWORK18	902.93	7.58	(3.70)	(134.97)
520066	JAYBARMARU	339.30	7.68	12.70	26.75
509966	VSTIND	270.00	23.87	49.30	21.16
507685	WIPRO	13741.70	12.90	2235.00	(1.63)
500405	SUPPETRO	809.17	23.11	54.34	165.33
532175	CYIENT	815.44	11.70	66.06	(29.49)
500188	HINDZINC	3132.00	(23.11)	2149.00	7.59

Economic Calendar

Country	Monday 18th April 16	Tuesday 19th April 16	Wednesday 20th April 16	Thursday 21th April 16	Friday 22th April 16
US		Building Permits , Housing Starts.	Existing Home Sales .	Philly Fed Manufacturing Index , Unemployment Claims , HPI m/m, Flash Manufacturing PMI , Flash Services PMI , CB Leading Index m/m , Natural Gas Storage.	
UK/EURO ZONE	German Buba Monthly Report.	German ZEW Economic Sentiment , ZEW Economic Sentiment , Current Account .	Average Earnings Index 3m/y , Claimant Count Change, German PPI m/m , Unemployment Rate , Italian Retail Sales m/m , CBI Industrial Order Expectations .	French Flash Manufacturing PMI , French Flash Services PMI , Spanish Unemployment Rate , German Constitutional Court Ruling , German Flash Manufacturing PMI , German Flash Services PMI , Flash Manufacturing PMI , Flash Services PMI , Minimum Bid Rate , ECB Press Conference .	German Ifo Business Climate , Belgian NBB Business Climate .
INDIA					



(Regn. No. : INP 000004011)

Narnolia Securities Ltd.

Narnolia Research Lab

Stellar IT Park | 5th Floor | Office Space No. 6 | Tower-II Ind Plot No. C-25 | Sector-62 | Noida | Ph : 0120-4215110

Narnolia Securities Ltd.

201 | 2nd Floor | Marble Arch Building | 236B-AJC Bose Road Kolkata-700 020 Ph : 033-40501500
Email : narnolia@narnolia.com website :www.narnolia.com