

SGX NIFTY : 8521 (1.4 Pt Down)

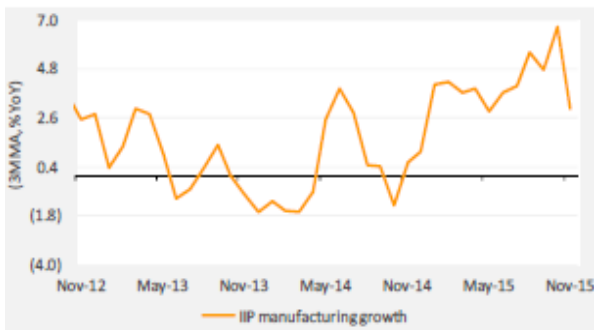
Quote of the Day

In a bull market, one must avoid the error of the preening duck that quacks boastfully after a torrential rainstorm, thinking that its paddling skills have caused it to rise in the world. A right-thinking duck would instead compare its position after the downpour to that of the other ducks on the pond."

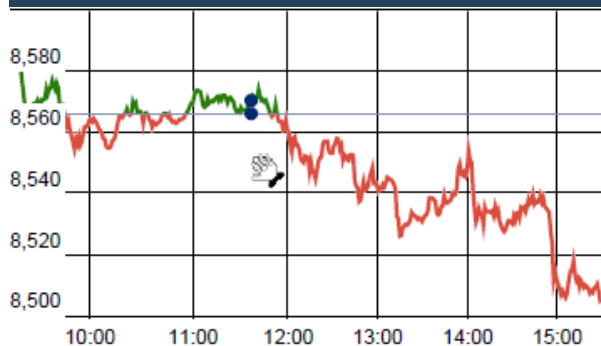
Warren Buffett

Chart of the Day

IIP Trend



Index Action Nifty (21th July 16)



Index

Contents	Page	Coverage
News	2	Update
Economic Calendar	3	Update

Market

Name	Value	Change
Sensex	27,710.52	(205.37)
Nifty	8510.10.	(0.65)
DOW	18,905.15	(18.25)
NASDAQ	5,036.37	6.78
CAC	4,376.25	(3.51)
DAX	10,156.21	14.20
FTSE	6,699.89	(29.10)
NIKKEI	16,644.28	(165.94)
HANG SENG	21,915.81	(84.65)
EW ALL SHARE	14930.37	125.41

Instituional Turnover

FII

Investor	Buy(Cr.)	Sale(Cr.)	Net(Cr.)
21-Jul-16	4293.45	3873.23	420.22
July,16	21490.67	23275.91	(1785.24)
2016	92982.59	109123.84	(16141.25)

DII

Investor	Buy(Cr.)	Sale(Cr.)	Net(Cr.)
21-Jul-16	1865.28	2237.68	(372.40)
July,16	11630.08	11291.98	338.10
2016	53334.55	39898.76	13435.79

Commodity Price

Commodity/Currencies	Value	
GOLD	31039.00	↓
SILVER	47342.00	↓
CRUDEOIL	46.91	↑
COPPER	330.60	↑
NATURALGAS	184.00	↓
DOLLAR/RS.	67.18	↑
EURO/RS.	74.13	↑
POUND/RS.	88.96	↑

Market Snapshot

Top Price Performers

Top Performers 1D	% Change	Top Performers 1W	% Change	Top Performers 1M	% Change
TATAMETALI	19.99	LAKSHMIEFL	58.68	AMTEKINDIA	113.92
ANANTRAJ	19.98	JINDCOT	43.97	JINDCOT	97.27
SATHAISPAT	19.95	JHS	33.72	DECNGOLD	79.82
JBMA	19.19	BVCL	32.04	RAMSARUP	76.30
TINPLATE	17.88	DECNGOLD	31.82	AROGRANITE	70.83

Worst Performers 1D	% Change	Worst Performers 1W	% Change	Worst Performers 1M	% Change
SPMLINFRA	(10.00)	MANDHANA	(18.39)	MANDHANA	(62.15)
FARMAXIND	(7.69)	SUPREMETEX	(18.38)	DCMSRMIND	(58.55)
MSPL	(5.77)	BLBLIMITED	(18.33)	SHRENUJ	(46.27)
HCL-INSYS	(5.62)	SHRENUJ	(18.28)	SUNASIAN	(29.59)
SRS LTD	(5.58)	LLOYDSTEEL	(16.00)	KPIT	(29.09)

Top News

- **L&T Hydrocarbon Engineering-led consortium** announced that it has bagged a USD 1.6-billion contract from oil major Saudi Aramco. The L&T subsidiary owns a 60 percent stake in the order is for the development of the second phase of Hasbah Offshore Gas field, situated off the coast of Saudi Arabia, which is to be completed over the next 36-40 months . The Aramco contract takes the company's order book to about Rs 7800-7900 crore.

- **NHPC** has entered into a pact with Bharat Heavy Electricals Ltd (BHEL) for undertaking hydro power projects in overseas markets. As per the MOU, NHPC and BHEL will look after the civil and electro mechanical packages respectively. During 2015-16 fiscal, NHPC power stations generated 23,404 million units. In the last fiscal, NHPC had a sales of Rs 7,347 crore with a net profit of Rs 2,440 crore.

- CDC Group plc will make an investment of about Rs 1,000 crore in IIFL's wholly-owned subsidiary, India Infoline Finance (IIFL Finance). This investment will help IIFL Group in expanding the financing business and address the capital needs of under-served segments through diversified offerings . The proposed investment is by way of compulsorily convertible preference shares (CCPS) which on conversion will result in about 15 percent equity stake for CDC in IIFL Finance on a fully diluted basis. The proposed transaction is subject to necessary regulatory approvals.

- **Mgt Int :** KPIT Tech hopeful of growth pick-up in H2FY17

>>Company is hopeful of a reasonable growth in the second half of FY17 on account of growth investments and new offerings.

>>The company expects the growth to remain flat in the first two quarters of FY17.

>>The company's pipeline of deals in products, enterprise and engineering segments is reasonable.

- **Suven Life** receives Establishment Inspection Report from USFDA.

Suven Life's Pashamylaram unit successfully completes US FDA inspection . Suven Life Sciences Ltd has undergone USFDA renewal inspection at their facility in Pashamylaram near Hyderabad for the manufacture and supply of active pharmaceutical ingredients (bulk drugs), intermediates and formulations under cGMP during April 4-14,

2016

- **Wockhardt** has received Establishment Inspection Report (EIR). The report is for its Chikalthana facility for its March 2015 US Food and Drug Administration (FDA) inspection. Upon completion of inspection USFDA provides inspected establishments an inspection report called an EIR.

- **Piramal Enterprises** said its board has approved raising up to Rs 1,000 crore through issue of non-convertible debentures. Piramal Enterprises Ltd (PEL) is the flagship company of Piramal Group and is present in the business verticals of healthcare and financial services.

- The government approved the proposal of ambuja's acquisition of 24 percent shares in **Holcim India Private** Limited from Holderind Investment. Holcim and Ambuja's proposed deal to effectively restructure Holcim's holding structure in India, which was originally proposed in 2013, will allow its parent Swiss giant LafargeHolcim to strengthen India footprint.

- **Philly Fed manufacturing index** fell to a seasonally adjusted -2.9, from 4.7 in the preceding month. Analysts had expected Philly Fed manufacturing index to rise 5.0 last month.

- **U.K. Public Sector Net Borrowing** fell to a seasonally adjusted 7.31B, from 9.41B in the preceding quarter whose figure was revised up from 9.14B. Analysts had expected U.K. Public Sector Net Borrowing to rise to 9.20B in the last quarter.

- **Swiss Trade Balance** fell to a seasonally adjusted 3.546B, from 3.782B in the preceding month whose figure was revised down from 3.786B. Analysts had expected Swiss Trade Balance to fall to 3.490B last month.

- **Japan's All Industries Activity Index** fell to a seasonally adjusted -1.0%, from 0.8% in the preceding month whose figure was revised down from 1.3%. Analysts had expected Japan's All Industries Activity Index to fall -1.0% last month.

Result Calendar Q1FY17

BSE Code	Company Name	Result Date	BSE Code	Company Name	Result Date
521141	ADITYASP	22-Jul-16	535789	IBULHSGFIN	25-Jul-16
523537	APMIN	22-Jul-16	532162	JKPAPER	25-Jul-16
532215	AXISBANK	22-Jul-16	500239	KGDENIM	25-Jul-16
512608	BHANDHOS	22-Jul-16	533302	KICL	25-Jul-16
506365	CHEMOPH	22-Jul-16	532889	KPRMILL	25-Jul-16
533167	COROENGG	22-Jul-16	500235	KSL	25-Jul-16
531346	EASTRED	22-Jul-16	500266	MAHSCOOTER	25-Jul-16
539844	EQUITAS	22-Jul-16	500126	MERCK	25-Jul-16
500469	FEDERALBNK	22-Jul-16	532200	MYSOREBANK	25-Jul-16
509635	HINDCOMPOS	22-Jul-16	532777	NAUKRI	25-Jul-16
505283	KIRLPNU	22-Jul-16	532504	NAVINFLUOR	25-Jul-16
532720	M&MFIN	22-Jul-16	539016	NEIL	25-Jul-16
500162	PARRYSUGAR	22-Jul-16	504112	NELCO	25-Jul-16
533179	PERSISTENT	22-Jul-16	501144	PEOPLIN	25-Jul-16
522205	PRAJIND	22-Jul-16	538771	PINCON	25-Jul-16
500355	RALLIS	22-Jul-16	507864	PIONRINV	25-Jul-16
532661	RML	22-Jul-16	532988	RANEENGINE	25-Jul-16
512115	ROSEMER	22-Jul-16	522034	SHANTIGEAR	25-Jul-16
500674	SANOFI	22-Jul-16	539378	SML	25-Jul-16
504960	STEWARTQ	22-Jul-16	530231	SUBSM	25-Jul-16
539871	THYROCARE	22-Jul-16	514211	SUMEETINDS	25-Jul-16
505196	TIL	22-Jul-16	513010	TATASPONGE	25-Jul-16
532410	TRANSCOR	22-Jul-16	505400	TEXINFRA	25-Jul-16
532401	VIJAYABANK	22-Jul-16	533326	TEXRAIL	25-Jul-16
522134	ARTSONEN	23-Jul-16	517393	VINTRON	25-Jul-16
526433	ASMTEC	23-Jul-16	532331	AJANTPHARM	26-Jul-16
524330	JAYAGROGN	23-Jul-16	500425	AMBUJACEM	26-Jul-16
522259	KALINDEE	23-Jul-16	530723	ASITCFIN	26-Jul-16
517415	LEENEE	23-Jul-16	533138	ASTEC	26-Jul-16
526299	MPHASIS	23-Jul-16	522005	AUSTENG	26-Jul-16
531254	OPTIFIN	23-Jul-16	531310	AVAILFC	26-Jul-16
539921	SEIL	23-Jul-16	532978	BAJAJFINSV	26-Jul-16
502450	SESHAPAPER	23-Jul-16	500034	BAJFINANCE	26-Jul-16
506690	UNICHEMLAB	23-Jul-16	500039	BANCOINDIA	26-Jul-16
507525	AMRITCORP	25-Jul-16	512313	BIJLTEX	26-Jul-16
520119	ASAL	25-Jul-16	531595	CGCL	26-Jul-16
533229	BAJAJCORP	25-Jul-16	531327	CHARMS	26-Jul-16
532483	CANBK	25-Jul-16	506395	COROMANDEL	26-Jul-16
507886	DHRUVES	25-Jul-16	508814	COSMOFILMS	26-Jul-16
523708	EIMCOELECO	25-Jul-16	500124	DRREDDY	26-Jul-16
531508	EVEREADY	25-Jul-16	500123	ELANTAS	26-Jul-16
514167	GANECOS	25-Jul-16	505700	ELECON	26-Jul-16
521133	GEMSPIN	25-Jul-16	500650	EXCELINDUS	26-Jul-16
500171	GHCL	25-Jul-16	532809	FSL	26-Jul-16
526797	GREENPLY	25-Jul-16	534063	FUTSOL	26-Jul-16
526899	HIMIN	25-Jul-16	509567	GOACARBON	26-Jul-16
523398	HITACHIOM	25-Jul-16	532659	IDFC	26-Jul-16

539437	IDFCBANK	26-Jul-16	526492	RISHIROOP	27-Jul-16
533047	IMFA	26-Jul-16	532983	RPGLIFE	27-Jul-16
534816	INFRATEL	26-Jul-16	526477	SAENTER	27-Jul-16
500210	INGERRAND	26-Jul-16	502090	SAGCEM	27-Jul-16
504786	INVPRECQ	26-Jul-16	523598	SCI	27-Jul-16
590003	KARURVYSYA	26-Jul-16	511218	SRTRANSFIN	27-Jul-16
500250	LGBBROSLTD	26-Jul-16	524542	SUKHJITS	27-Jul-16
532756	MAHINDCIE	26-Jul-16	521180	SUPERSPIN	27-Jul-16
538970	MANVIJAY	26-Jul-16	530401	VINYOFL	27-Jul-16
532500	MARUTI	26-Jul-16	532648	YESBANK	27-Jul-16
500304	NIITLTD	26-Jul-16	517041	ADORWELD	28-Jul-16
523642	PIIND	26-Jul-16	538778	AKASHDEEP	28-Jul-16
532460	PONNIERODE	26-Jul-16	538777	ASIACAP	28-Jul-16
500337	PRIMESECU	26-Jul-16	526612	BLUEDART	28-Jul-16
512591	PULSRIN	26-Jul-16	500147	CMIFPE	28-Jul-16
512309	ROSETEX	26-Jul-16	532760	DEEPIND	28-Jul-16
500407	SWARAJENG	26-Jul-16	590031	DENORA	28-Jul-16
500408	TATAELXSI	26-Jul-16	532839	DISHTV	28-Jul-16
532343	TVSMOTOR	26-Jul-16	505200	EICHERMOT	28-Jul-16
532432	UNITDSPR	26-Jul-16	533477	ENKEIWHEL	28-Jul-16
532953	VGUARD	26-Jul-16	505790	FAGBEARING	28-Jul-16
524129	VINYLINDIA	26-Jul-16	500139	FEDDERLOYD	28-Jul-16
509055	VISAKAIND	26-Jul-16	513108	GANDHITUBE	28-Jul-16
505412	WENDT	26-Jul-16	532764	GEECEE	28-Jul-16
505537	ZEEL	26-Jul-16	500660	GLAXO	28-Jul-16
500820	ASIANPAINT	27-Jul-16	531600	GOGIACAP	28-Jul-16
500215	ATFL	27-Jul-16	506076	GRINDWELL	28-Jul-16
532977	BAJAJ-AUTO	27-Jul-16	530001	GUJALKALI	28-Jul-16
500490	BAJAJHLDNG	27-Jul-16	517372	GUJINTRX	28-Jul-16
532454	BHARTIARTL	27-Jul-16	500185	HCC	28-Jul-16
500870	CASTROLIND	27-Jul-16	509675	HIL	28-Jul-16
506935	CONTCHM	27-Jul-16	530055	HRMNYCP	28-Jul-16
500096	DABUR	27-Jul-16	533192	KCPSUGIND	28-Jul-16
513452	ELANGO	27-Jul-16	500245	KIRLFER	28-Jul-16
500123	ELANTAS	27-Jul-16	507598	KLRF	28-Jul-16
508906	EVERESTIND	27-Jul-16	517449	MAGNAELQ	28-Jul-16
511676	GICHSGFIN	27-Jul-16	532313	MAHLIFE	28-Jul-16
500010	HDFC	27-Jul-16	531727	MENNPIS	28-Jul-16
517044	IDM	27-Jul-16	513496	MEWATZI	28-Jul-16
504741	INDIANHUME	27-Jul-16	533398	MUTHOOTFIN	28-Jul-16
502330	IPAPPM	27-Jul-16	500313	OILCOUNTUB	28-Jul-16
524731	JENBURPH	27-Jul-16	504093	PANAENERG	28-Jul-16
526923	KUMAKAIND	27-Jul-16	532805	REDINGTON	28-Jul-16
526179	LUDLOWJUT	27-Jul-16	530931	STANPACK	28-Jul-16
530011	MANGCHEFER	27-Jul-16	516108	STHINPA	28-Jul-16
512103	NIDHGRN	27-Jul-16	509930	SUPREMEIND	28-Jul-16
500730	NOCIL	27-Jul-16	521200	SURYALAXMI	28-Jul-16
520021	OMAXAUTO	27-Jul-16	532276	SYNDIBANK	28-Jul-16
500360	RAPICUT	27-Jul-16	532156	VAIBHAVGBL	28-Jul-16

501370	WALCHPF	28-Jul-16	539354	POLYSPIN	29-Jul-16
512587	ZODJRDMKJ	28-Jul-16	532826	RAJTV	29-Jul-16
511359	ADMANUM	29-Jul-16	530271	RICHUNV	29-Jul-16
537292	AGRITECH	29-Jul-16	532638	SHOPERSTOP	29-Jul-16
531581	ALKADIA	29-Jul-16	504398	SJCORP	29-Jul-16
506767	ALKYLAMINE	29-Jul-16	512014	SOBME	29-Jul-16
521097	AMARJOTHI	29-Jul-16	532872	SPARC	29-Jul-16
532493	ASTRAMICRO	29-Jul-16	514197	STCORP	29-Jul-16
524663	BIBCL	29-Jul-16	501110	SUNRINV	29-Jul-16
535620	BINNYMILLS	29-Jul-16	526576	TECHIN	29-Jul-16
532974	BIRLAMONEY	29-Jul-16	505978	TRITONV	29-Jul-16
532902	CCCL	29-Jul-16	511096	TVOLCON	29-Jul-16
511243	CHOLAFIN	29-Jul-16	512070	UPL	29-Jul-16
539876	CROMPTON	29-Jul-16	500295	VEDL	29-Jul-16
500089	DICIND	29-Jul-16	512064	VISTR	29-Jul-16
522074	ELGIEQUIP	29-Jul-16	511333	VLSFINANCE	29-Jul-16
517477	ELNET	29-Jul-16	509046	ZLEENCON	29-Jul-16
530333	EMGEECA	29-Jul-16	531519	ANKUSHFI	30-Jul-16
526574	ENTRINT	29-Jul-16	526125	ARHNTTO	30-Jul-16
523754	EPCIN	29-Jul-16	512247	ASHCAP	30-Jul-16
505714	GABRIEL	29-Jul-16	508933	AYMSYNTEX	30-Jul-16
532424	GODREJCP	29-Jul-16	531458	BOSTONBIO	30-Jul-16
530469	GSLSEC	29-Jul-16	531210	COLINZ	30-Jul-16
519552	HERITGFOOD	29-Jul-16	531472	CYBELEIND	30-Jul-16
532174	ICICIBANK	29-Jul-16	531270	DAZZEL	30-Jul-16
532612	INDOCO	29-Jul-16	530705	FLORATX	30-Jul-16
507779	KANPRPLA	29-Jul-16	500033	FORCEMOT	30-Jul-16
500165	KANSAINER	29-Jul-16	531399	GGAUTO	30-Jul-16
532714	KEC	29-Jul-16	524754	GUJMEDI	30-Jul-16
524019	KINGFA	29-Jul-16	504176	HIGHENE	30-Jul-16
502150	KLYNCEM	29-Jul-16	532041	HINDBIO	30-Jul-16
532652	KTKBANK	29-Jul-16	538838	ICL	30-Jul-16
539524	LALPATHLAB	29-Jul-16	531672	INANISEC	30-Jul-16
500510	LT	29-Jul-16	500220	JASCH	30-Jul-16
500264	MAFATIND	29-Jul-16	508993	KEDIACN	30-Jul-16
500262	MAFATLAFIN	29-Jul-16	512455	LLOYDSME	30-Jul-16
530243	MANGASOF	29-Jul-16	531221	MAYURFL	30-Jul-16
512065	MRUTR	29-Jul-16	538890	MKEXIM	30-Jul-16
520043	MUNJALSHOW	29-Jul-16	515037	MURUDCERA	30-Jul-16
537291	NATHBIOGEN	29-Jul-16	526831	NAINAMS	30-Jul-16
502168	NCLIND	29-Jul-16	531272	NIKKIGL	30-Jul-16
531049	NEELKAN	29-Jul-16	508875	NITINALOY	30-Jul-16
500790	NESTLEIND	29-Jul-16	530253	RAJTUBE	30-Jul-16
500307	NIRLON	29-Jul-16	533470	RUSHIL	30-Jul-16
509782	OSEASPR	29-Jul-16	522152	SOLIMAC	30-Jul-16
508941	PANCARBON	29-Jul-16	530565	SSLFINANCE	30-Jul-16
511702	PARSHINV	29-Jul-16	513488	SSWRL	30-Jul-16
500331	PIDILITIND	29-Jul-16	510245	SWASTIVI	30-Jul-16
519439	PIONAGR	29-Jul-16	531762	UNJHAFOR	30-Jul-16

524038	VENLONENT	30-Jul-16	506480	GOCLCORP	04-Aug-16
516030	YASHPPR	30-Jul-16	533217	HMVL	04-Aug-16
511403	SAIJEEV	31-Jul-16	505737	INTLCOMBQ	04-Aug-16
532230	BENGALT	01-Aug-16	533293	KIRLOSENG	04-Aug-16
500067	BLUESTARCO	01-Aug-16	524084	MONSANTO	04-Aug-16
504648	BOMBWIR	01-Aug-16	532864	NELCAST	04-Aug-16
532744	GTNTEX	01-Aug-16	534076	ORIENTREF	04-Aug-16
505893	HINDHARD	01-Aug-16	512618	RLF	04-Aug-16
539448	INDIGO	01-Aug-16	504973	TUBEINVEST	04-Aug-16
532722	NITCO	01-Aug-16	523411	ADCINDIA	05-Aug-16
516082	NRAGRINDQ	01-Aug-16	532056	ADIEXRE	05-Aug-16
514326	PATSPINLTD	01-Aug-16	500049	BEL	05-Aug-16
501154	ROSEI	01-Aug-16	534804	CARERATING	05-Aug-16
531869	SACHEMT	01-Aug-16	517544	CENTUM	05-Aug-16
590072	SUNDRMBRAK	01-Aug-16	521220	DAMOINDUS	05-Aug-16
512527	SUPER	01-Aug-16	532662	HTMEDIA	05-Aug-16
539118	VRLLOG	01-Aug-16	524699	KILBURNC	05-Aug-16
531147	ALICON	02-Aug-16	523323	KOVAI	05-Aug-16
511339	APPLECREDIT	02-Aug-16	500252	LAXMIMACH	05-Aug-16
530429	ASHISHPO	02-Aug-16	532529	NDTV	05-Aug-16
539979	DIGJAMLTD	02-Aug-16	530555	PARACABLES	05-Aug-16
500840	EIHOTEL	02-Aug-16	520056	SUNCLAYLTD	05-Aug-16
509631	HEG	02-Aug-16	532782	SUTLEJTEX	05-Aug-16
532814	INDIANB	02-Aug-16	507747	TTKHEALTH	05-Aug-16
523405	JMFINANCIL	02-Aug-16	500008	AMARAJABAT	06-Aug-16
533393	TCIDEVELOP	02-Aug-16	532133	IFGLREFRAC	06-Aug-16
532779	TORNTPOWER	02-Aug-16	526558	JAMEHOT	06-Aug-16
500575	VOLTAS	02-Aug-16	532644	JKCEMENT	06-Aug-16
500043	BATAINDIA	03-Aug-16	521242	KANDAGIRI	06-Aug-16
509480	BERGEPAIN	03-Aug-16	532865	MEGH	06-Aug-16
530809	BNRUDY	03-Aug-16	500456	PASUPTAC	06-Aug-16
533108	BTTL	03-Aug-16	521234	SRINACHA	06-Aug-16
513375	CARBORUNIV	03-Aug-16	514183	BLACKROSE	08-Aug-16
590087	ELLENBARR	03-Aug-16	500825	BRITANNIA	08-Aug-16
531162	EMAMILTD	03-Aug-16	530457	CINERAD	08-Aug-16
500133	ESABINDIA	03-Aug-16	500830	COLPAL	08-Aug-16
521018	MARALOVER	03-Aug-16	522261	DOLPHINOFF	08-Aug-16
531319	MARUTISE	03-Aug-16	590043	HARITASEAT	08-Aug-16
535754	ORIENTCEM	03-Aug-16	511208	IVC	08-Aug-16
526109	PRICOL	03-Aug-16	590066	KCP	08-Aug-16
500346	PUNJCOMMU	03-Aug-16	504258	LAKSELEC	08-Aug-16
500260	RAMCOCEM	03-Aug-16	537800	MANGIND	08-Aug-16
500414	TIMEX	03-Aug-16	530759	STERTOOLS	08-Aug-16
517506	TTKPRESTIG	03-Aug-16	539132	VEGETABLE	08-Aug-16
590013	XPROINDIA	03-Aug-16	500877	APOLLOTYRE	09-Aug-16
506597	AMAL	04-Aug-16	532212	ARCHIES	09-Aug-16
505688	BHARATGEAR	04-Aug-16	506820	ASTRAZEN	09-Aug-16
531854	FUNWTRD	04-Aug-16	500144	FINCABLES	09-Aug-16
532345	GATI	04-Aug-16	505250	GGDANDE	09-Aug-16

533150	GODREJPROP	09-Aug-16	505010	AUTOAXLES	12-Aug-16
509162	INDAG	09-Aug-16	526925	BOBSHELL	12-Aug-16
531213	MANAPPURAM	09-Aug-16	504671	CHASBRT	12-Aug-16
533202	NITESHEST	09-Aug-16	530171	DAULAT	12-Aug-16
511632	OLYMTFI	09-Aug-16	531306	DHPIND	12-Aug-16
500338	PRISMCEM	09-Aug-16	523736	DPL	12-Aug-16
526775	VALIANT	09-Aug-16	531599	FDC	12-Aug-16
522267	VJLAXMIE	09-Aug-16	531191	FILTRON	12-Aug-16
505520	ZHEMHOLD	09-Aug-16	538961	GENUSPAPER	12-Aug-16
534742	ZUARI	09-Aug-16	530263	GLOBALCA	12-Aug-16
524824	BALPHARMA	10-Aug-16	526729	GOLDIAM	12-Aug-16
500085	CHAMBLFERT	10-Aug-16	538422	JACKSON	12-Aug-16
511742	CHOKSEC	10-Aug-16	504840	KAIRA	12-Aug-16
500144	FINCABLES	10-Aug-16	535730	KHOBSURAT	12-Aug-16
503639	INDSOYA	10-Aug-16	514456	METROOV	12-Aug-16
538539	JTAPARIA	10-Aug-16	522235	MINALIND	12-Aug-16
500520	M&M	10-Aug-16	531289	NATFIT	12-Aug-16
517344	MINDTECK	10-Aug-16	524558	NEULANLAB	12-Aug-16
531157	ORGOAT	10-Aug-16	517296	PHOENIXLL	12-Aug-16
532693	PUNJLLOYD	10-Aug-16	507966	RASRESOR	12-Aug-16
531500	RAJESHEXPO	10-Aug-16	530125	SAMRATPH	12-Aug-16
538875	SELLWIN	10-Aug-16	521222	SANBLUE	12-Aug-16
538975	SHREESEC	10-Aug-16	530035	SANTOSHF	12-Aug-16
500411	THERMAX	10-Aug-16	530797	SHGANEL	12-Aug-16
522113	TIMKEN	10-Aug-16	521194	SILINV	12-Aug-16
538464	TPROJECT	10-Aug-16	506655	SUDARSCHEM	12-Aug-16
520113	VESUVIUS	10-Aug-16	509038	VOLLF	12-Aug-16
500780	ZUARIGLOB	10-Aug-16	530803	BHAGIL	13-Aug-16
530609	CARNATIN	11-Aug-16	514440	BPTX	13-Aug-16
532180	DHANBANK	11-Aug-16	524378	JMDEPACKR	13-Aug-16
533248	GPPL	11-Aug-16	505594	MULTIIN	13-Aug-16
522064	HONDAPOWER	11-Aug-16	532166	ALKASEC	14-Aug-16
500298	NATPEROX	11-Aug-16	506590	PHILIPCARB	17-Aug-16
530557	NCLRESE	11-Aug-16	519191	JOLYMER	25-Aug-16
505800	RANEHOLDIN	11-Aug-16	535755	ABFRL	31-Aug-16
530073	SANGHVIMOV	11-Aug-16			

Result Earning Q1FY17

BSE Code	Company Name	Sales (Cr)	Sales Growth	PAT (Cr.)	PAT Growth
500086	EXIDEIND	1957.00	9.00	191.30	23.30
500002	ABB	2087.10	8.00	92.40	35.00
500093	CROMPGREAV	1336.50	(34.30)	41.00	LP
532538	ULTRACEMCO	6567.10	8.80	845.40	43.10
500696	HINDUNILVR	8591.40	6.00	1154.30	9.60
532523	BIOCON	961.00	16.50	114.00	(9.50)
500674	SANOFI	621.30	13.00	83.00	29.30
532792	CAIRN	2120.90	(19.30)	549.50	(34.20)
532819	MINDTREE	1341.10	36.60	161.10	16.60

526299	MPHASIS	1449.10	(3.20)	196.80	13.00
533179	PERSISTENT	701.80	40.20	74.40	10.70
507685	WIPRO	14059.00	14.90	2073.80	(5.20)
532215	AXISBANK	4591.40	13.20	1994.00	0.80
500469	FEDERALBNK	676.00	11.80	154.00	8.90
500180	HDFCBANK	7807.40	22.20	3234.10	20.00
500247	KOTAKBANK	1888.20	18.10	734.90	287.20
533228	BHARATFIN	182.50	56.70	103.60	69.40
511288	GRUH	120.60	15.70	62.30	23.90
532720	M&MFIN	772.20	7.80	155.80	75.10

Result Q1FY17

BSE Code	Company Name	Sales (Cr)	Sales Growth	PAT (Cr.)	PAT Growth
511196	CANFINHOME	309.84	27.78	49.72	54.89
532175	CYIENT	830.57	14.35	73.97	(1.15)
523445	RIL	23.12	(0.77)	3.02	(31.98)
532443	CERA	223.00	14.79	21.39	36.50
524394	VIMTALABS	37.82	34.21	2.71	115.08
532540	TCS	29305.00	14.17	6513.00	14.05
500325	RELIANCE	64990.00	(15.74)	7464.00	19.96
507753	SREERAYALK	212.98	22.82	5.55	(37.99)
520066	JAYBARMARU	282.49	(7.01)	7.04	(11.67)
523704	MASTEK	129.60	(2.40)	3.58	(19.19)
500209	INFY	16782.00	16.92	3436.00	13.47
507488	GMBREW	89.03	9.62	12.58	(20.83)
511505	CAPITALT	19.76	66.61	9.12	156.18
500253	LICHSGFIN	3326.33	14.02	407.84	6.73
511766	MUTHTFN	64.23	27.87	4.48	19.47
531364	CHOICEINF	1.00	(91.52)	0.04	(73.33)
531531	HATSUN	1032.31	19.28	29.07	1.32
531950	VERTEX	1.05	23.53	(0.15)	(28.57)
531410	GUJFOIL	85.77	(37.22)	(4.40)	(340.44)
532407	MOSCHIP	1.74	70.59	0.15	(108.52)
512161	8KMILES	103.87	105.44	19.33	167.73
532541	NIITTECH	669.20	4.38	31.30	(46.50)
532800	TV18BRDCST	210.69	(22.84)	(14.13)	(264.11)
532798	NETWORK18	351.08	(14.52)	(49.70)	(215.99)
533287	ZEELEARN	42.06	17.52	8.02	102.53
500188	HINDZINC	2530.60	(29.62)	1036.90	(46.02)
523648	PLASTIBLEN	143.70	12.21	8.40	(20.38)
517569	KEI	560.70	8.97	16.90	44.44
531209	NUCLEUS	90.00	(2.91)	10.80	(23.40)
523229	BHARATSE	204.30	21.53	1.68	73.20
532400	KPIT	803.20	5.92	55.00	23.85
500150	FOSECOIND	87.40	15.96	9.90	15.52
500472	SKFINDIA	703.10	16.54	60.40	29.75
507438	IFBAGRO	213.35	40.00	8.80	20.38
532538	ULTRACEMCO	6589.10	3.43	780.00	31.95
507685	WIPRO	13697.60	10.73	2051.90	(6.21)

523457	LINDEINDIA	430.30	15.33	(2.47)	(162.59)
500086	EXIDEIND	2011.00	12.01	196.05	26.32
513729	AROGRANITE	67.13	12.16	5.00	252.37
500330	RAYMOND	1061.90	(4.27)	(16.61)	21.06
505726	IFBIND	417.69	20.49	14.91	41.46
500875	ITC	13253.00	8.35	2384.00	0.25

Economic Calendar					
Country	Monday 18th July 16	Tuesday 19th July 16	Wednesday 20th July 16	Thursday 21th July 16	Friday 22th July 16
US	Philly Fed Manufacturing Index ,Unemployment Claims ,HPI m/m, Flash Manufacturing PMI , Flash Services PMI , CB Leading Index m/m , Natural Gas Storage.		Flash Manufacturing PMI , Flash Services PMI.	Core Durable Goods Orders m/m , Durable Goods Orders m/m , New Home Sales , S&P/CS Composite-20 HPI y/y , CB Consumer Confidence , New Home Sales .	HPI m/m , Existing Home Sales , Crude Oil Inventories .
UK/EURO ZONE	Current Account , Retail Sales m/m , Final CPI y/y , Final Core CPI y/y , ECB Monetary Policy Meeting Accounts .	German PPI m/m , Public Sector Net Borrowing .	French Flash Manufacturing PMI , French Flash Services PMI , Spanish Unemployment Rate , German Constitutional Court Ruling , German Flash Manufacturing PMI , German Flash Services PMI , Flash Manufacturing PMI, Flash Services PMI , Minimum Bid Rate , ECB	GfK Consumer Confidence .	German Final GDP q/q , CBI Realized Sales , Belgian NBB Business Climate .
INDIA					

Narnolia Securities Ltd.

Narnolia Research Lab

Stellar IT Park | 5th Floor | Office Space No. 6 | Tower-IIInd Plot No. C-25 | Sector-62 | Noida | Ph : 0120-4215110

Narnolia Securities Ltd.

201 | 2nd Floor | Marble Arch Building | 236B-AJC Bose Road Kolkata-700 020 Ph : 033-40501500

Email : narnolia@narnolia.com website :www.narnolia.com