

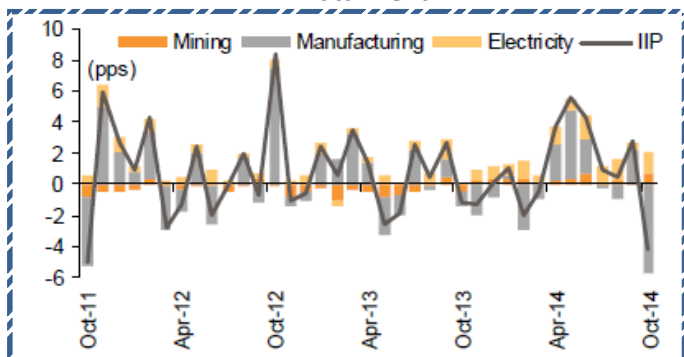
Quote of the Day

"You ought to be able to explain why you're taking the job you're taking, why you're making the investment you're making, or whatever it may be. And if it can't stand applying pencil to paper, you'd better think it through some more. And if you can't write an intelligent answer to those questions, don't do it." **Warren Buffett**

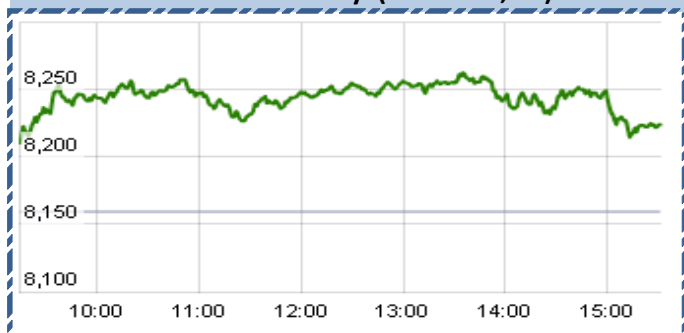
SGX NIFTY : 8250
(17 pts Up)

Chart of the Day

IIP Data Trend



Index Action-Nifty (19th Dec, 14)



Index

Contents	Page	Coverage
News	3	UPDATE
Economic calendar	4	UPDATE

MARKET

Name	Value	Change
Sensex	27,372	245.27
Nifty	8,225.20	65.90
DOW	17804.8	26.65
NASDAQ	4765.38	16.98
CAC	4241.65	(7.84)
DAX	9786.96	(24.10)
FTSE	6545.27	79.27
NIKKEI	17618.99	(2.42)
HANG SENG	23338.21	221.38
EW ALL SHARE	13739.08	83.54

INSTITUTIONAL TURNOVER

FII			
Investor	Buy(Cr.)	Sale(Cr.)	Net(Cr.)
19th Dec	5238.80	5,907.65	(668.85)
Dec,14	50624.85	48,382.49	2242.36
2014	949865.82	8,76,782.00	73083.82
DII			
Investor	Buy(Cr.)	Sale(Cr.)	Net(Cr.)
19th Dec	1928.50	1,305.73	622.77
Dec,14	20978.91	20,559.48	419.43
2014	342400.89	3,76,382.83	(33981.94)

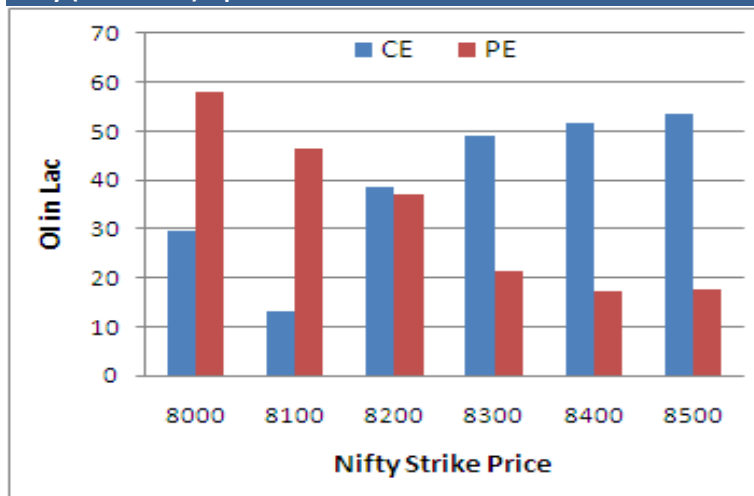
COMMODITY PRICE

COMMODITY/CURRENCIES	Value	
GOLD	26998.00	↑
SILVER	36940.00	↑
CRUDEOIL	57.75	↑
COPPER	409.10	↑
NATURALGAS	221.40	↓
DOLLAR/RS.	63.30	↑
EURO/RS.	77.39	↑
POUND/RS.	98.84	↑

Narnolia Securities Ltd.

NIFTY SNAPSHOT	
Nifty Spot	8225.20(+65.90)
Nifty Dec 2014 Future	8233
Nifty Jan 2014 Future	8301
Nifty Dec 2014 Open Interest	19795925
Nifty Jan 2014 Open Interest	6335775
7 DMA of Spot Nifty	8174
21 DMA of Spot Nifty	8095
50 DMA of Spot Nifty	8235
VOLATILITY INDEX (VIX)	14.51(-0.09)
PUT CALL RATIO	0.93

Nifty (Dec Series) Option OI Distribution:



Activity of Nifty (Dec Series) Strike

Strike Price	CALL		PUT	
	OI	% Chng	OI	% Chng
8000	2946550	21.63	5812950	11.05
8100	1308200	-87.31	4643300	4.85
8200	3869950	-36.03	3697275	16.01
8300	4916325	-2.22	2138100	16.73
8400	5147700	4.21	1728375	-12.00
8500	5365300	-1.32	1757900	-3.90

Fresh Long Seen In (Rising OI -Rising Price)

Scrip	OI	OI ch%	CMP	Ch%
PETRONET	35,00,000	18.7	200.9	2.1
JSWENERGY	238,48,000	10.7	102.2	9.7
TATAPOWER	319,48,000	7.9	83.4	2.3
OFSS	1,27,750	5.4	3330.1	2.8
VOLTAS	63,02,000	4.3	249.3	2.2

PCR (OI)

STOCK	T1	T2
IBREALEST	0.35	0.25
JSWENERGY	0.36	0.25
ICICIBANK	0.70	0.51
TATAMTRDVR	0.79	0.60
ULTRACEMCO	0.72	0.55



FII Activity (Fig in Cr)

Segment	Buy	Sell	Net
INDEX FUTURE	4,744	4,824	(80)
INDEX OPTION	23,247	21,204	2,043
STOCK FUTURE	8,140	7,785	355
STOCK OPTION	2,528	2,566	(38)
TOTAL	38,660	36,379	2,280

Fresh Shorts Seen In: (Rising OI -Falling Price)

Scrip	OI	OI ch%	CMP	Ch%
IBREALEST	440,36,000	20.2	68.4	-2.1
EXIDEIND	87,28,000	8.5	169.2	-0.5
MARUTI	27,57,625	6.6	3356.2	-0.9
RELINFRA	83,62,500	6.3	492.8	-2.5
IGL	5,94,500	5.1	422.2	-1.5

PCR (OI)

STOCK	T1	T2
HINDUNILVR	0.40	0.48
SRTRANSFIN	0.68	0.81
ITC	0.47	0.56
TECHM	0.45	0.53
ASIANPAINT	0.46	0.53

Technical Ideas

PERSISTENT

19-Dec-14

Buy near 1575 tgt of 1525 with 1680 as sl.



After spending few days in channel Persistent has broken upper range of channel with high volume which indicates that momentum will carry this stock upto 1680. Momentum oscillator stochastic is also showing strength. Persistent will also take benefit of rupee fall. In mid cap IT its a best player. Delivery quantity is also rising which indicates that traders/investors are accumulating this stock for upside potential.

ATUL AUTO

19-Dec-14

Buy near 1033 tgt of 1080 with 1007 as sl.



Technically ATUL AUTO is looking very attractive. After consolidating in the range of 1350-1200 yesterday it has broken an imp upper level of 1355 with volume. Momentum oscillator stochastic is also showing strength. On volume front it has traded with high volume after 18 Oct 2014. Delivery percentage is also rising. Finally it has also successfully managed to close above 50SMA.

Markets Snapshot

Top Price Performers

Top Performers 1D	% Change	Top Performers 1W	% Change	Top Performers 1M	% Change
JINDALPHOT	20.00	MASTEK	38.64	BINNY	82.33
MODILUFT	19.70	SURAJLTD	29.28	AFTEK	75.06
ARVINDREM	18.75	FORBESGOK	28.44	STRAUSIND	65.88
SURAJLTD	16.13	CENTRUM	27.55	INFODRIVE	63.05
GLOBOFFS	14.57	STRAUSIND	26.46	MIC	62.61

Worst Price Performers

Worst Performers 1D	% Change	Worst Performers 1W	% Change	Worst Performers 1M	% Change
VAKRANSOFT	(15.50)	KSERASERA	(50.08)	KSERASERA	(50.08)
BILPOWER	(15.15)	PRITI	(39.94)	ERAINFRA	(47.97)
AANJANEYA	(12.37)	WINSOMEDJ	(33.64)	PRITI	(47.82)
BANG	(10.67)	OMNITECH	(25.24)	DIAPOWER	(45.55)
KSERASERA	(9.99)	ERAINFRA	(21.96)	MANAKSIA	(45.30)

Top News :

- **Bajaj Auto** has bagged an order for 1.25 lakh units of Discover-125M motorcycles from Sri Lankan government. The company through its distributor David Pieris Motor Company in Sri Lanka had secured, after a detailed evaluation process by the Government of Sri Lanka, an order from them for supply of around 50,000 units of Discover-125M motorcycles.

- **Panacea Biotec** has entered into collaboration with Rising Pharmaceuticals Inc, one of industry's leading organizations involved in marketing and distribution of innovative branded and multi-source prescription and over-the-counter pharmaceutical products in USA

- **Mahindra & Mahindra Ltd Clarification** : "Mahindra Partners in Talk to Buy Online Co BabyOye". Mahindra & Mahindra Ltd replied stating "This matter pertains to an unlisted subsidiary of Mahindra & Mahindra Limited and not to the Company. As such, it would not be appropriate for us to comment on the same. The Company would continue to inform stock exchanges about any price sensitive information before the same is made public."

- **SC** dismisses JSPL's plea for penalty payment extension . In a desperate bid, JSPL highlighted high debt levels and impact on daily operations and offered to submit either bank guarantees or monthly payments of Rs 100 crore.

- **IDFC Ltd** is planning to cut stake in IDFC Infrastructure Debt Fund (IIDF), its wholly-owned subsidiary, to 49 per cent. IIDF is raising Rs 1,500 crore through non-convertible debentures (NCDs) to buy out loans to road projects

- **HDFC Bank and Ratnakar Bank** got clearance from government panel Foreign Investment Promotion Board for their respective FDI proposals. HDFC Bank had applied for yet another FIPB approval, this time for expanding its equity base by up to Rs 10,000 crore

- **Fund Action : VAN ECK VIP Emerging Markets Fund** bought 38,09,668 shares of NCC at Rs 82.90 on the NSE. Morgan Stanley Asia (Singapore) PTE sold 6,74,125 shares of Radico Khaitan at Rs 90.30 on the BSE.

- **Dr. Reddy's Laboratories** announced that it has closed the acquisition of Habitrol brand from Novartis Consumer Health. Habitrol is an over-the-counter nicotine replacement therapy transdermal patch. The acquisition was completed following the U.S. Federal Trade Commission issuing the consent order on November 26 .

- **Mexican Unemployment Rate** fell to a seasonally adjusted annual rate of 4.53%, from 4.78% in the preceding month. Analysts had expected Mexican Unemployment Rate to fall to 4.59% last month.

- **Canadian core CPI** fell to a seasonally adjusted -0.2%, from 0.3% in the preceding month. Analysts had expected Canadian core CPI to rise 0.1% last month.

- **Brazilian Unemployment Rate** rose to a seasonally adjusted 4.8%, from 4.7% in the preceding month. Analysts had expected Brazilian Unemployment Rate to fall to 4.5% last month.

- **U.K. Public Sector Net Borrowing** rose to a seasonally adjusted 13.41B, from 6.43B in the preceding quarter whose figure was revised down from 7.06B. Analysts had expected U.K. Public Sector Net Borrowing to rise to 15.37B in the last quarter.

- **New York** banned fracking in the state for health reasons, saying that the fracking alongwith horizontal drilling and chemical laced water can increase risk of cancer, skin rashes, and upper respiratory problems. If rest of the states in the US follow suit, it could put billions of dollars of investment at risk.

Economic Calendar

	Monday 22-Dec-14	Tuesday 23-Dec-14	Wednesday 24-Dec-14	Thursday 25-Dec-14	Friday 26-Dec-14
US	Existing Home Sales .	Core Durable Goods Orders m/m ,Final GDP q/q , Core PCE Price Index m/m , Durable Goods Orders m/m , Personal Spending m/m , Final GDP Price Index q/q , Personal Income m/m , Flash Manufacturing PMI , New Home Sales .	Unemployment Claims , Crude Oil Inventories , Natural Gas Storage .	Holiday	Revised UoM Consumer Sentiment
UK/EURO ZONE	German Unemployment Change , GfK Consumer Confidence .	BBA Mortgage Approvals , Current Account , German Retail Sales m/m , Final GDP q/q ,		Holiday	
INDIA					



Narnolia Securities Ltd

124, 1st floor 7/ 1, Lords Sinha Road Kolkata 700071, Ph 033-22821251 Toll Free no : 1-800-345-4000

email: research@narnolia.com,

website : www.narnolia.com

Risk Disclosure & Disclaimer: This report/message is for the personal information of the authorized recipient and does not construe to be any investment, legal or taxation advice to you. Narnolia Securities Ltd. (Hereinafter referred as NSL) is not soliciting any action based upon it. This report/message is not for public distribution and has been furnished to you solely for your information and should not be reproduced or redistributed to any other person in any form. The report/message is based upon publicly available information, findings of our research wing "East wind" & information that we consider reliable, but we do not represent that it is accurate or complete and we do not provide any express or implied warranty of any kind, and also these are subject to change without notice. The recipients of this report should rely on their own investigations, should use their own judgment for taking any investment decisions keeping in mind that past performance is not necessarily a guide to future performance & that the the value of any investment or income are subject to market and other risks. Further it will be safe to assume that NSL and /or its Group or associate Companies, their Directors, affiliates and/or employees may have interests/ positions, financial or otherwise, individually or otherwise in the recommended/mentioned securities/mutual funds/ model funds and other investment products which may be added or disposed including & other mentioned in this report/message.