

SGX NIFTY : 7835.00 ( 3 Pt Down)

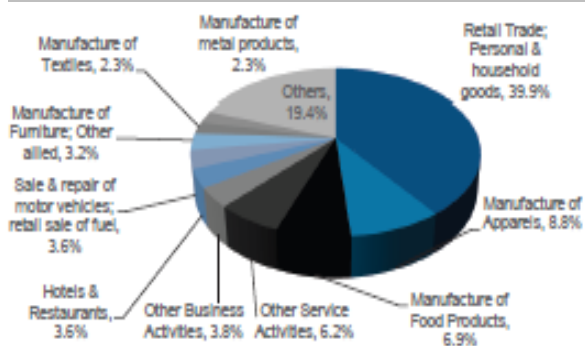
**Quote of the Day**

"Even with a margin [of safety] in the investor's favor, an individual security may work out badly. For the margin guarantees only that he has a better chance for profit than for loss - not that loss is impossible. But as the number of such commitments is increased the more certain does it become that the aggregate of the profits will exceed the aggregate of the losses."

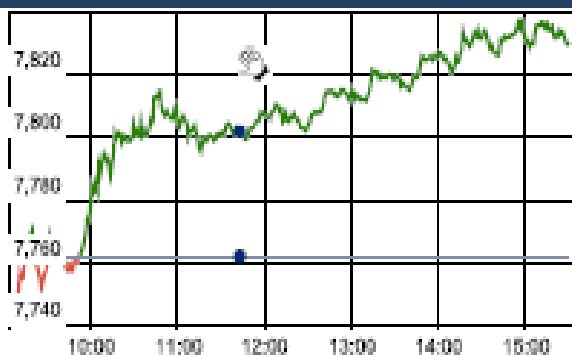
Benjamin Graham

**Chart of the Day**

**Retail Trade Trend in MSME Sector**



**Index Action Nifty ( 21th Dec 15 )**



**Index**

Contents	Page	Coverage
News	2	Update
Economic Calendar	3	Update

**Market**

Name	Value	Change
Sensex	25,731.07	(4.83)
Nifty	7829.40	(5.05)
DOW	17,251.42	122.47
NASDAQ	4,968.92	45.84
CAC	4,565.17	(60.09)
DAX	10,497.77	(110.42)
FTSE	6,034.84	(17.68)
NIKKIE	18,917.51	1.49
HANG SENG	21,776.60	(15.08)
EW ALL SHARE	13708.66	(72.65)

**Instituional Turnover**

**FII**

Investor	Buy(Cr.)	Sale(Cr.)	Net(Cr.)
21-Dec-15	2468.66	2431.29	37.37
Dec,15	44691.83	48429.68	(3737.85)
2015	1095334.37	1111912.71	(16578.34)

**DII**

Investor	Buy(Cr.)	Sale(Cr.)	Net(Cr.)
21-Dec-15	1191.34	1128.64	62.70
Dec,15	25406.94	17773.80	7633.14
2015	451239.21	386150.90	65088.31

**Commodity Price**

Commodity/Currencies	Value	
GOLD	25385.00	↑
SILVER	34301.00	↑
CRUDEOIL	36.10	↑
COPPER	317.35	↑
NATURALGAS	127.70	↑
DOLLAR/RS.	66.35	↓
EURO/RS.	72.09	↓
POUND/RS.	98.81	↑

## Market Snapshot

### Top Price Performers

Top Performers 1D	% Change	Top Performers 1W	% Change	Top Performers 1M	% Change
PARACABLES	20.00	PIRLIFE	63.59	RAMANEWS	135.36
INDLMETER	19.97	RAMANEWS	53.04	SHIVACEM	101.20
ISMTLTD	19.93	JCT	52.13	GEMINI	99.31
GUJNRECOKE	19.93	PARACABLES	45.87	PIRLIFE	90.01
SPENTEX	19.82	SPENTEX	43.92	INFODRIVE	86.67

Worst Performers 1D	% Change	Worst Performers 1W	% Change	Worst Performers 1M	% Change
KSCL	(8.02)	SHRENUJ	(27.34)	AMTEKINDIA	(39.32)
ISIBARS	(7.41)	AMTEKINDIA	(23.50)	SHRENUJ	(39.00)
PRADIP	(6.25)	SUNILHITEC	(20.46)	KGNIND	(36.09)
HBLPOWER	(6.02)	GODFRYPHLP	(16.48)	SUDAR	(33.09)
SUNILHITEC	(5.83)	GEMINI	(14.75)	SEZAL	(26.76)

### Top News

- **Cipla** has launched generic tablets used for treating of hepatitis C under the brand name 'Hepcvir-L' costing Rs 25,000 for a bottle of 28 tablets in India. The launch of Ledipasvir-Sofosbuvir is a further step to facilitate the optimal treatment for patients suffering from genotype 1 hepatitis C virus."
- **Kotak Mahindra Bank** acquired a 1.37 percent stake in Godrej Properties for Rs 91 crore through an open market transaction. The bank acquired 27,46,043 shares or 1.37 percent stake in the real estate development arm of the Godrej group for Rs 90.61 crore, according to the bulk deals data available with the NSE. The shares were bought at an average price of Rs 330 per scrip.
- **State Bank of India** said it will raise Rs 12,000 crore by way of issue of Tier II bonds to comply with capital needs under the Basel III rules. In August this year the government had announced fund infusion of Rs 20,088 crore into 13 PSU banks with SBI cornering a hefty Rs 5,531 crore.
- **Thomas Cook India** has entered into a strategic partnership with digital payment solutions company ItzCash to extend its outreach to India's rapidly growing unbanked inward remittance market, by offering remittance services.
- **HDIL** has sold 850,000 square feet of development rights in Kurla here to a company belonging to the Mumbai-based Wadhawan Group for Rs 649 crore
- **Adani Green Energy, a subsidiary of Adani Enterprises**, has acquired 100% equity stake in Ahmedabad-based Duryodhana Developers, Adani Enterprises said in a regulatory statement on stock exchange.
- **Strides Shasun** has received approval from the Drug Controller General of India (DCGI) to produce a generic version of Gilead's 'Sovaldi' used for treatment of Hepatitis C. Strides had entered into a licensing agreement with Gilead Sciences to bring Hepatitis C cure to 91 developing countries.
- **Granules India** has received three observations from the USFDA for its Jeedimetla, Hyderabad facility during a recent inspection. US Food and Drug Administration (USFDA) completed the inspection of company's two facilities, one located at Vizag in Andhra Pradesh and another at Jeedimetla in Telangana .
- **RCOM** said that it has sold nearly 150 residential flats in Navi Mumbai for Rs 330 crore, the proceeds from which will be used to repay debt.
- **German Producer Price Inflation** fell to a seasonally adjusted annual rate of -0.2%, from -0.4% in the preceding month. Analysts had expected German Producer Price Inflation to fall -0.2% last month.
- **U.S. CB Leading Index** rose to a seasonally adjusted annual rate of 0.4%, from 0.6% in the preceding month. Analysts had expected U.S. CB Leading Index to rise 0.1% last month.
- **Japanese Ministry of Economy, Trade and Industry said that Japan's All Industries Activity Index** rose to a seasonally adjusted 1.0%, from -0.2% in the preceding month.
- **CBI realized trades** rose to 19, from 7 in the preceding month. Analysts had expected CBI realized trades to rise to 21 last month.
- **Canadian wholesale sales** fell to a seasonally adjusted -0.6%, from -0.3% in the preceding month whose figure was revised down from -0.1%. Analysts had expected Canadian wholesale sales to rise 0.1% last month.
- **CBI industrial trends orders** rose to -7, from -11 in the preceding month. Analysts had expected CBI industrial trends orders to rise to -10 last month.

### Economic Calendar

Country	Monday 21th Dec 15	Tuesday 22th Dec 15	Wednesday 23th Dec 15	Thursday 24th Dec 15	Friday 25th Dec 15
<b>US</b>	Final GDP q/q , Final GDP Price Index q/q , HPI m/m , Flash Manufacturing PMI , Existing Home Sales , Richmond Manufacturing Index .	Core Durable Goods Orders m/m ,Core PCE Price Index m/m ,Durable Goods Orders m/m , Personal Spending m/m , New Home Sales , Crude Oil Inventories .	Unemployment Claims , Revised UoM Consumer Sentiment , Revised UoM Inflation Expectations , Natural Gas Storage .		Holiday
<b>UK/EURO ZONE</b>	French Flash Manufacturing PMI , GfK German Consumer Climate , French Flash Services PMI , German Flash Manufacturing PMI , German Flash Services PMI , Flash Manufacturing PMI , Flash Services PMI m, Public Sector Net Borrowing .	Current Account , Final GDP q/q , Core Retail Sales m/m , GDP m/m ,	BBA Mortgage Approvals .	Italian 10-y Bond Auction	Holiday
<b>INDIA</b>					



SEBI Registered Portfolio Manager

(Regn. No. : INP 000004011)

## Narnolia Securities Ltd.

### Narnolia Research Lab

Stellar IT Park | 5th Floor | Office Space No. 6 | Tower-II|nd Plot No. C-25 | Sector-62 | Noida | Ph : 0120-4215110

### Central Strategy Desk - Kolkata

124 | 1st Floor | 7/1 Lords Sinha Road | Kolkata - 71  
Ph : 033-22821500 | M : 93347 14418, 98302 69810