

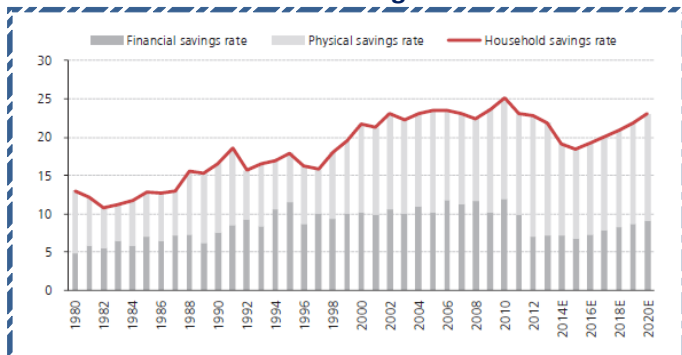
**Quote of the Day**

"We've long felt that the only value of stock forecasters is to make fortune tellers look good. Even now, Charlie (Munger) and I continue to believe that short-term market forecasts are poison and should be kept locked up in a safe place, away from children and also from grown-ups who behave in the market like children." **Warren Buffett**

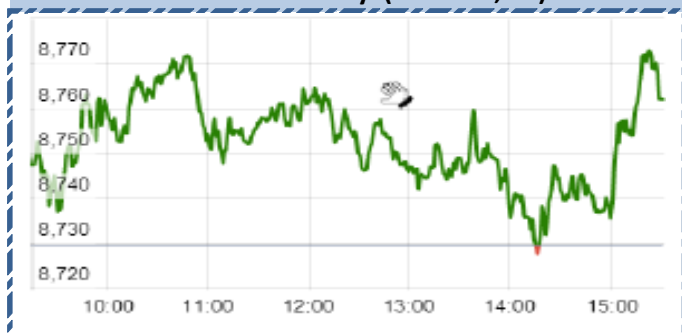
**SGX NIFTY : 8864**  
**( 77 pts Up)**

**Chart of the Day**

**Financial Saving Trend**



**Index Action-Nifty (22th Jan, 15)**



**Index**

Contents	Page	Coverage
News	3	UPDATE
Result Calendar Q3FY15	4 to 10	UPDATE
Result Q3FY15	11	UPDATE
Economic Calendar	10	UPDATE

**MARKET**

Name	Value	Change
Sensex	29006.02	117.06
Nifty	8761.4	31.90
DOW	17813.98	259.70
NASDAQ	4750.42	89.82
CAC	4552.8	67.98
DAX	10435.62	136.39
FTSE	6796.63	68.59
NIKKIE	17505.18	176.16
HANG SENG	24813.02	290.39
EW ALL SHARE	14643.15	62.90

**INSTITUTIONAL TURNOVER**

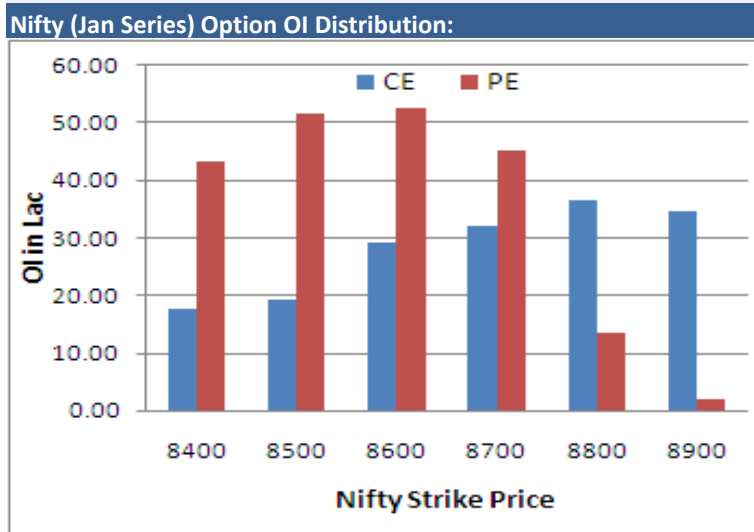
FII			
Investor	Buy(Cr.)	Sale(Cr.)	Net(Cr.)
22th Jan	5408.39	4,815.60	592.79
Jan,15	68027.68	63,070.31	4957.37
2015	68027.68	63,070.31	4957.37
DII			
Investor	Buy(Cr.)	Sale(Cr.)	Net(Cr.)
22th Jan	1781.45	2,359.98	(578.53)
Jan,15	26703.13	29,491.21	(2788.08)
2015	26703.13	29,491.21	(2788.08)

**COMMODITY PRICE**

COMMODITY/CURRENCIES	Value	
GOLD	28030.00	↑
SILVER	40090.00	↑
CRUDEOIL	47.14	↑
COPPER	350.55	↓
NATURALGAS	171.80	↓
DOLLAR/RS.	61.70	↑
EURO/RS.	69.98	↓
POUND/RS.	92.48	↑

**Narnolia Securities Ltd.**

NIFTY SNAPSHOT	
Nifty Spot	8761.40(+31.90)
Nifty Jan 2014 Future	8784
Nifty Feb 2014 Future	8837
Nifty Jan 2014 Open Interest	22654775
Nifty Feb 2014 Open Interest	2189650
7 DMA of Spot Nifty	8508
21 DMA of Spot Nifty	8338
50 DMA of Spot Nifty	8366
VOLATILITY INDEX (VIX)	18.56(+0.85)
PUT CALL RATIO	1.18



Activity of Nifty (Jan Series) Strike				
Strike	CALL		PUT	
	OI	% Chng	OI	% Chng
8400	1775775	-6.24	4334350	-11.48
8500	1916250	-7.41	5152225	0.43
8600	2906875	-23.85	5253675	1.20
8700	3200325	-36.26	4510725	24.56
8800	3643225	5.15	1344950	36.12
8900	3477575	5.35	190175	28.03

FIIs Activity (Fig in Cr)			
Segment	Buy	Sell	Net
INDEX FUTURE	2,151	1,249	902
INDEX OPTION	15,704	17,372	(1,668)
STOCK FUTURE	3,840	4,341	(501)
STOCK OPTION	2,316	2,285	31
<b>TOTAL</b>	<b>24,011</b>	<b>25,248</b>	<b>(1,237)</b>

Fresh Long Seen In (Rising OI -Rising Price)				
Scrip	OI	OI ch%	CMP	Ch%
IFCI	562,80,000	5.6	37.5	0.3
TCS	47,77,000	5.0	2512.8	0.1
AMBUJACEM	54,48,000	4.8	248.9	0.9
DISHTV	351,04,000	4.8	74.4	4.5
TATAMOTORS	200,14,500	4.4	566.3	2.7

Fresh Shorts Seen In: (Rising OI -Falling Price)				
Scrip	OI	OI ch%	CMP	Ch%
DIVISLAB	7,44,250	11.6	1658.3	-1.2
ITC	365,21,000	9.6	350.4	-0.6
PETRONET	52,34,000	9.4	189.1	-2.6
TECHM	18,68,125	6.8	2758.2	-1.4
SYNDIBANK	161,22,000	6.0	127.3	-1.5

PCR (OI)			
STOCK	T1	T2	
DISHTV	0.48	0.32	
IBREALEST	0.42	0.31	
JPASSOCIAT	0.77	0.58	
BPCL	0.70	0.55	
EXIDEIND	0.54	0.43	

PCR (OI)			
STOCK	T1	T2	
PFC	0.47	0.66	
TATAMTRDVR	0.63	0.80	
BAJAJ-AUTO	0.73	0.93	
RECLTD	0.56	0.70	
RELIANCE	0.62	0.77	

## Markets Snapshot

### Top Price Performers

Top Performers 1D	% Change	Top Performers 1W	% Change	Top Performers 1M	% Change
HITACHIOM	20.00	TAKE	50.23	NTCIND	206.18
ALCHEM	19.94	RICHAIND	49.03	ERAINFRA	125.64
GLOBALCA	19.86	MIRZAIN	44.80	INDOSOLAR	116.38
AGCNET	19.77	CCCL	44.42	WEBELSOLAR	108.15
RICHAIND	17.13	ANDHRAPET	39.07	KGIND	102.02

### Worst Price Performers

Worst Performers 1D	% Change	Worst Performers 1W	% Change	Worst Performers 1M	% Change
IFBAGRO	(14.29)	RESTILE	(23.03)	OUTCTYTRVL	(72.55)
HELIOMATH	(12.39)	SHRENT	(21.64)	JMDTELEFILM	(59.65)
GEE	(12.09)	HELIOMATH	(18.53)	PRITI	(51.55)
KGENT	(11.09)	KGENT	(18.32)	RASOYPR	(47.65)
SHRENT	(10.21)	PRITI	(17.75)	AADHAARVEN	(44.12)

### Top News :

- **TTK Prestige Mgt Guideline** : Company said the sales in Diwali were very weak and e-retailing too hurt appliance sales. However, January has been reasonably robust and could make for the earlier quarter . The company would be eyeing a topline growth of 12 percent for FY15 . The exports for the company for the quarter ended December stood at Rs 13.5 crore and for fourth quarter it would be around 16 percent . Tamil Nadu market for the company has bounced back even though it has seen be bogged by power cuts to the tune of 40 percent. Market share in the South India has also increased .

- **Emami Overseas FZE (based in UAE)**, a Wholly owned subsidiary of EMAMI LTD has acquired controlling stake of 66.67% in M/s Fravin Pty Ltd (Fravin), a Company based in Australia with major strength in R&D and manufacture of natural and organic personal care products in Australia.

- **CBI** arrested three persons, including a close aide of former Telecom Minister Dayanidhi Maran, in connection with the telephone exchange case. Investigators have alleged that when Mr Maran was Telecom Minister, he used 300 government-owned phone lines for Sun TV, the media network owned by his brother, Kalanidhi, in Tamil Nadu .

- **Reliance Industries** has priced its dollar bonds worth \$ 1 billion at 240 basis points over the 10-year US Treasury Note, to yield 4.249 per cent. The funds will be utilized for its ongoing capital expenditure in India and its bonds were oversubscribed by 4.5 times.

- **Aurobindo Pharma Clarification** : "Aurobindo, Actavis recall Gabapentin capsules" . Aurobindo Pharma Ltd replied stating "Aurobindo Pharma's US Subsidiary, Aurobindo Pharma USA Inc voluntarily recalled a batch of Gabapentine Capsules USP 300mg, 100-count bottles in the month of November 2014, as the product lot was found to contain some empty capsules. Such recall did not have any material impact on the Company's financials. Company consider that the news appearing in some sections of the Indian media relates to an earlier incidence that has been reported out of context. This does not require disclosure under clause 36 of the listing agreement. Company also as a policy do not comment on the media reports and market speculations

- **Somany Ceramics Mgt Guideline** : Company is confident of maintaining 20 percent FY15 growth guidance and look at similar growth for FY16 too. The 19.6-19.7 percent volume growth was mainly on back of value addition mix . The company is also confident of maintaining 0.5-0.6 percent year-on-year growth in profit before tax (PBT) margins.

- **U.K. public sector borrowing**, the difference between spending and income, was £12.47 billion in December, up from £11.73 billion in November. Analysts had expected the U.K. public sector net borrowing to total £9.0 billion in December.

- **Spanish unemployment rate** rose to an annual rate of 23.70%, from 23.67% in the preceding month. Analysts had expected Spanish unemployment rate to fall to 23.50% last month.

- **The European Central Bank** announced higher than expected monthly bond buying programme amounting to 60 billion euro till September 2016. It, however, kept benchmark interest rate unchanged.

- **China`s central bank** injected 50 billion yuan (\$8 billion) of liquidity into the financial system. The People`s Bank of China offered 50 billion yuan (\$8 billion) of seven-day reverse repos, a short-term lending facility to commercial banks, in its open-market operation today, 22 January 2015

## Result Calendar Q3FY15

Bse Coade	Company Name	Date	Bse Coade	Company Name	Date
531161	ABMKNO	23-Jan-15	513544	MSCTC	24-Jan-15
523411	ADCINDIA	23-Jan-15	533179	PERSISTENT	24-Jan-15
532309	AIL	23-Jan-15	526095	RALEGRA	24-Jan-15
501622	AMALGAM	23-Jan-15	532029	SINDHUTRAD	24-Jan-15
527001	ASHAPURMIN	23-Jan-15	531169	SKPSEC	24-Jan-15
500027	ATUL	23-Jan-15	511218	SRTRANSFIN	24-Jan-15
503960	BBL-₹	23-Jan-15	532301	TATACOFFEE	24-Jan-15
500049	BEL	23-Jan-15	532432	UNITDSPR	24-Jan-15
500830	COLPAL	23-Jan-15	532848	DELTACORP	26-Jan-15
506395	COROMANDEL	23-Jan-15	505216	ALFREDHE	27-Jan-15
501148	DSINVEST	23-Jan-15	500008	AMARAJABAT	27-Jan-15
532922	EDELWEISS	23-Jan-15	513729	AROGRANITE-₹	27-Jan-15
523754	EPCIN	23-Jan-15	522004	BATLIBOI-₹	27-Jan-15
530929	EUROASIA	23-Jan-15	512313	BIJLTEX	27-Jan-15
590065	IMPAL	23-Jan-15	511505	CAPITALT	27-Jan-15
526887	INDOCRED	23-Jan-15	500110	CHENNPETRO	27-Jan-15
501151	KARTKIN	23-Jan-15	511243	CHOLAFIN	27-Jan-15
506528	KELENRG	23-Jan-15	512445	DEVITRD	27-Jan-15
507948	KEYCORP	23-Jan-15	533208	EMAMIPAP	27-Jan-15
532924	KOLTEPATIL	23-Jan-15	531508	EVEREADY	27-Jan-15
526596	LIBERTSHOE	23-Jan-15	523113	FUTURSEC	27-Jan-15
501471	MACK	23-Jan-15	512493	GARNETINT	27-Jan-15
526642	MIRZAINI	23-Jan-15	500171	GHCL	27-Jan-15
503015	MODERN-₹	23-Jan-15	533150	GODREJPROP	27-Jan-15
531096	MOUNTEVE	23-Jan-15	500690	GSFC	27-Jan-15
532416	NEXTMEDIA	23-Jan-15	505982	HINDUJAF0-₹	27-Jan-15
530175	ODYSSEY-₹	23-Jan-15	532822	IDEA	27-Jan-15
520021	OMAXAUTO	23-Jan-15	533181	ISFT	27-Jan-15
500314	ORIENTHOT	23-Jan-15	524622	ISTRNETWK	27-Jan-15
500327	PILIND	23-Jan-15	512329	JARITEX	27-Jan-15
522257	RAJOOENG-₹	23-Jan-15	524731	JENBURPH	27-Jan-15
532987	RBL	23-Jan-15	507981	JINDHOT	27-Jan-15
532983	RPGLIFE	23-Jan-15	532652	KTKBANK	27-Jan-15
511640	SANGHCO	23-Jan-15	524103	LINEARPO	27-Jan-15
501267	SHRERAN	23-Jan-15	505320	LYNMC	27-Jan-15
523363	STERLINH	23-Jan-15	532500	MARUTI	27-Jan-15
506854	TANFACIND-₹	23-Jan-15	531209	NUCLEUS	27-Jan-15
501242	TCIFINANCE	23-Jan-15	502165	OCL	27-Jan-15
531846	TRINITYLEA	23-Jan-15	517536	ONWARDTEC	27-Jan-15
532538	ULTRACEMCO	23-Jan-15	512626	ORBTEXP	27-Jan-15
511736	USHDI	23-Jan-15	512115	ROSEMER	27-Jan-15
533023	WABCOINDIA	23-Jan-15	512309	ROSETEX	27-Jan-15
506194	ASL	24-Jan-15	532841	SAHYADRI	27-Jan-15
531340	BERVINL	24-Jan-15	532143	SKMEGGPROD	27-Jan-15
532210	CUB	24-Jan-15	516108	STHINPA	27-Jan-15
532329	DANLAW-₹	24-Jan-15	532812	TFL	27-Jan-15
532345	GATI	24-Jan-15	500114	TITAN	27-Jan-15
531531	HATSUN	24-Jan-15	532477	UNIONBANK	27-Jan-15
500236	KANELIND	24-Jan-15	524200	VINATIORGA	27-Jan-15
532741	KIL	24-Jan-15	524129	VINYLINDIA	27-Jan-15

532553	WELPROJ	27-Jan-15	521194	SILINV	28-Jan-15
538538	WELSPUNENT	27-Jan-15	502742	SINTEX	28-Jan-15
505412	WENDT	27-Jan-15	538635	SNOWMAN	28-Jan-15
512297	WHELTEX	27-Jan-15	500420	TORNTPHARM	28-Jan-15
501270	ZCHANAIN	27-Jan-15	532144	WELCORP	28-Jan-15
504356	ZMULTIPU	27-Jan-15	533252	WELINV	28-Jan-15
523204	ABAN	28-Jan-15	532016	WELLESLEY	28-Jan-15
532268	ACCELYA	28-Jan-15	505583	WWTECHHOL	28-Jan-15
532921	ADANIPOINTS	28-Jan-15	523395	3MINDIA	29-Jan-15
533096	ADANIPOWER	28-Jan-15	500710	AKZOINDIA	29-Jan-15
532331	AJANTPHARM	28-Jan-15	500477	ASHOKLEY	29-Jan-15
506767	ALKYLAMINE	28-Jan-15	526187	ASHRAM	29-Jan-15
522275	ALSTOMT&D	28-Jan-15	500820	ASIANPAINT	29-Jan-15
532830	ASTRAL	28-Jan-15	513375	CARBORUNIV	29-Jan-15
531310	AVAILFC	28-Jan-15	521210	CITYMAN	29-Jan-15
519105	AVTNPL	28-Jan-15	533309	DALMIABHA	29-Jan-15
505688	BHARATGEAR	28-Jan-15	531306	DHPIND	29-Jan-15
532974	BIRLAMONEY-\$	28-Jan-15	500124	DRREDDY	29-Jan-15
533108	BTTL	28-Jan-15	500133	ESABINDIA	29-Jan-15
531556	CORALFINAC	28-Jan-15	500135	ESSELPRO	29-Jan-15
526821	DAICHI-\$	28-Jan-15	506803	FULFORD	29-Jan-15
500840	EIHOTEL	28-Jan-15	513108	GANDHITUBE-\$	29-Jan-15
531162	EMAMILTD	28-Jan-15	531953	GCCL	29-Jan-15
500246	ENVAIREL	28-Jan-15	531375	GCCLINP	29-Jan-15
523696	FORTISMLR	28-Jan-15	532622	GDL	29-Jan-15
500150	FOSECOIND	28-Jan-15	530855	GDLLEAS	29-Jan-15
531600	GOGIACAP	28-Jan-15	531399	GGAUTO	29-Jan-15
532482	GRANULES	28-Jan-15	531360	GOLECHA	29-Jan-15
509546	GRAVISSHO	28-Jan-15	506076	GRINDWELL	29-Jan-15
517354	HAVELLS	28-Jan-15	511441	GUJCREC	29-Jan-15
523844	INVICTA	28-Jan-15	517372	GUJINTRX-\$	29-Jan-15
523405	JMFINANCIL	28-Jan-15	500185	HCC	29-Jan-15
535648	JUSTDIAL	28-Jan-15	500010	HDFC	29-Jan-15
532926	JYOTHYLAB	28-Jan-15	523398	HITACHIOM	29-Jan-15
513509	KALYANIFRG	28-Jan-15	532835	ICRA	29-Jan-15
526179	LUDLOWJUT	28-Jan-15	532659	IDFC	29-Jan-15
532796	LUMAXTECH	28-Jan-15	532636	IIFL	29-Jan-15
521018	MARALOVER	28-Jan-15	532150	INDRAMEDCO	29-Jan-15
531319	MARUTISE	28-Jan-15	504810	INFORTEC	29-Jan-15
523544	MONEL	28-Jan-15	504786	INVPRECQ	29-Jan-15
504882	NATIONSTD	28-Jan-15	511208	IVC	29-Jan-15
500730	NOCIL	28-Jan-15	523592	JENSONICOL	29-Jan-15
532481	NOIDATOLL	28-Jan-15	590003	KARURVYSYA	29-Jan-15
500331	PIDILITIND	28-Jan-15	500245	KIRLFER	29-Jan-15
513519	PITTILAM-\$	28-Jan-15	523207	KOKUYOCLN	29-Jan-15
590055	POLYSPIN	28-Jan-15	523323	KOVAI	29-Jan-15
512481	POLYTEX	28-Jan-15	530139	KREONFIN	29-Jan-15
512461	PUNCTRD	28-Jan-15	507912	LKPFIN	29-Jan-15
500359	RANBAXY	28-Jan-15	501874	MACKINN	29-Jan-15
532923	RJL	28-Jan-15	533259	MICROSEC	29-Jan-15
501154	ROSEI	28-Jan-15	532440	MPSLTD	29-Jan-15
501061	SBBJ	28-Jan-15	516062	NATPLY	29-Jan-15

500313	OILCOUNTUB	29-Jan-15	509480	BERGEPAIN	30-Jan-15
532880	OMAXE	29-Jan-15	511698	BHAGYFN	30-Jan-15
500315	ORIENTBANK	29-Jan-15	524723	BIJHANS	30-Jan-15
507260	ODHSUG	29-Jan-15	500059	BINANIIND	30-Jan-15
537839	PHOENIXTN	29-Jan-15	535620	BINNYMILLS	30-Jan-15
590121	PILANIINV	29-Jan-15	500069	BNKCAP	30-Jan-15
532366	PNBGILTS	29-Jan-15	526925	BOBSHELL	30-Jan-15
520111	RATNAMANI	29-Jan-15	532405	CCSIN	30-Jan-15
531539	RISHDIGA-\$	29-Jan-15	517544	CENTUM	30-Jan-15
532699	ROHLTD	29-Jan-15	500147	CMIFPE-\$	30-Jan-15
505807	ROLCOEN	29-Jan-15	504340	CONFINT	30-Jan-15
531324	ROSELABS	29-Jan-15	506935	CONTCHM	30-Jan-15
509423	SEL	29-Jan-15	531067	CONTILI	30-Jan-15
532498	SHRIRAMCIT	29-Jan-15	526269	CRSTCHM	30-Jan-15
533228	SKSMICRO	29-Jan-15	500096	DABUR	30-Jan-15
505827	SNL	29-Jan-15	500097	DALMIASUG	30-Jan-15
500295	SSLT	29-Jan-15	526285	DIVYAJYQ	30-Jan-15
530883	SUCROSA	29-Jan-15	532927	ECLERX	30-Jan-15
500407	SWARAJENG	29-Jan-15	503681	ELCIDIN	30-Jan-15
532390	TAJGVK	29-Jan-15	504387	ELFTRDG	30-Jan-15
521228	TATIAGLOB	29-Jan-15	517477	ELNET-\$	30-Jan-15
532349	TCI	29-Jan-15	509525	EMPIND	30-Jan-15
533393	TCIDEVELOP	29-Jan-15	532178	ENGINERSIN	30-Jan-15
531652	THIRDFIN	29-Jan-15	526574	ENTRINT	30-Jan-15
511559	TIMESGTY	29-Jan-15	514060	EVERTEX	30-Jan-15
500414	TIMEX-\$	29-Jan-15	500650	EXCELINDUS	30-Jan-15
524717	TITANBIO	29-Jan-15	531754	FINCOM	30-Jan-15
530045	TITANSEC	29-Jan-15	534063	FUTSOL	30-Jan-15
500251	TRENT	29-Jan-15	505714	GABRIEL	30-Jan-15
532371	TTML	29-Jan-15	502856	GNDHISP	30-Jan-15
512117	TWIROST	29-Jan-15	500670	GNFC	30-Jan-15
532398	UMESLTD	29-Jan-15	513343	GRANDFONRY	30-Jan-15
530505	UPERGANGES	29-Jan-15	532015	GRAVITY-\$	30-Jan-15
532156	VAIBHAVGBL	29-Jan-15	530469	GSLSEC	30-Jan-15
512511	VARUNME	29-Jan-15	505712	GUJAUTO	30-Jan-15
517393	VINTRON	29-Jan-15	530141	GYANDEV	30-Jan-15
507880	VIPIND	29-Jan-15	532281	HCLTECH	30-Jan-15
501370	WALCHPF	29-Jan-15	519552	HERITGFOOD	30-Jan-15
538268	WONDERLA	29-Jan-15	500189	HINDUJAVEN	30-Jan-15
511601	YASHMGM	29-Jan-15	526683	HOTELRUGBY	30-Jan-15
505163	ZFSTEERING	29-Jan-15	532174	ICICIBANK	30-Jan-15
512587	ZODJRD MJ	29-Jan-15	500106	IFCI	30-Jan-15
503893	ZSATYASL	29-Jan-15	532100	INDOCITY-\$	30-Jan-15
524348	AARTIDRUGS	30-Jan-15	532612	INDOCO	30-Jan-15
512599	ADANIENT	30-Jan-15	504746	INLCM	30-Jan-15
500003	AEGISLOG	30-Jan-15	505358	INTEGRAEN	30-Jan-15
521097	AMARJOTHI	30-Jan-15	538835	INTELLECT	30-Jan-15
532418	ANDHRABANK	30-Jan-15	506161	ISHWATR	30-Jan-15
590122	ASHIKACR	30-Jan-15	509715	JAYSHRETEA	30-Jan-15
533271	ASHOKA	30-Jan-15	524592	JDORGOCHEM	30-Jan-15
532134	BANKBARODA	30-Jan-15	500228	JSWSTEEL	30-Jan-15
524687	BASANTGL-\$	30-Jan-15	500165	KANSAINER	30-Jan-15

505890	KENNAMET	30-Jan-15	503696	SHRENTI	30-Jan-15
531692	KHYATI	30-Jan-15	523790	SHUKJEW	30-Jan-15
532352	KIRLMU	30-Jan-15	531219	SHYAMAINFO	30-Jan-15
500241	KIRLOSBROS	30-Jan-15	530439	SIDDHA	30-Jan-15
502150	KLYNCEM	30-Jan-15	500550	SIEMENS	30-Jan-15
511138	KOTHARIFIN	30-Jan-15	504398	SJCORP	30-Jan-15
503626	KSHITIJ	30-Jan-15	531506	SKRABUL	30-Jan-15
531164	LADIAMO	30-Jan-15	512014	SOBME	30-Jan-15
513605	LANCO INDUST	30-Jan-15	532872	SPARC	30-Jan-15
500250	LGBBROSLTD	30-Jan-15	514442	SRIKPRIND	30-Jan-15
533007	LGBFORGE	30-Jan-15	590071	SUNDARMFIN	30-Jan-15
517463	LINAKS	30-Jan-15	501110	SUNRINV	30-Jan-15
517449	MAGNAELQ-\$	30-Jan-15	532733	SUNTV	30-Jan-15
532313	MAHLIFE	30-Jan-15	531003	SWRNASE	30-Jan-15
506919	MAKERSL-\$	30-Jan-15	511447	SYLPH	30-Jan-15
526891	MKTCREAT	30-Jan-15	500800	TATAGLOBAL	30-Jan-15
509196	MMRUBBR-B	30-Jan-15	532755	TECHM	30-Jan-15
509760	MODRNSH	30-Jan-15	501421	TECHNVISN	30-Jan-15
524084	MONSANTO	30-Jan-15	500411	THERMAX	30-Jan-15
531049	NEELKAN	30-Jan-15	517407	TOYAMAQ-\$	30-Jan-15
500452	NEPCAGRO	30-Jan-15	526582	TPLPLAST	30-Jan-15
500301	NEPCMICON	30-Jan-15	530783	TRANSASIA	30-Jan-15
531077	NEPCPAPER	30-Jan-15	502281	TRIVENIGQ-\$	30-Jan-15
521192	NEPCTEX	30-Jan-15	504273	TUMUSEL	30-Jan-15
524558	NEULANLAB	30-Jan-15	511096	TVOLCON	30-Jan-15
523209	NICCOUCO	30-Jan-15	536709	VAKPOWINF	30-Jan-15
512103	NIDHGRN	30-Jan-15	531650	VAXHS	30-Jan-15
521009	NIWASSP	30-Jan-15	524038	VENLONENT	30-Jan-15
532555	NTPC	30-Jan-15	532401	VIJAYABANK	30-Jan-15
538537	OMANSH	30-Jan-15	530401	VINYOFL	30-Jan-15
514460	OSWAYRN	30-Jan-15	500238	WHIRLPOOL	30-Jan-15
530555	PARACABLES-\$	30-Jan-15	590013	XPROINDIA	30-Jan-15
511702	PARSHINV	30-Jan-15	512345	YASTF	30-Jan-15
521080	PASARI	30-Jan-15	533287	ZEELEARN	30-Jan-15
531352	PEETISEC	30-Jan-15	509046	ZLEENCON	30-Jan-15
532933	PORWAL	30-Jan-15	511359	ADMANUM	31-Jan-15
531256	PRAVEEN	30-Jan-15	537292	AGRITECH	31-Jan-15
531802	PRERINFRA	30-Jan-15	512008	AMANITRA	31-Jan-15
519262	PRIMAGR	30-Jan-15	531519	ANKUSHFI	31-Jan-15
531246	PRIMAIN	30-Jan-15	526125	ARHNTTO	31-Jan-15
512217	PRISMMEDI	30-Jan-15	532493	ASTRAMICRO	31-Jan-15
532689	PVR	30-Jan-15	512038	ASWTR	31-Jan-15
532866	QUINTEGRA	30-Jan-15	517246	BCCFUBA	31-Jan-15
530253	RAJTUBE	30-Jan-15	530879	BHILTEX	31-Jan-15
530271	RICHUNV	30-Jan-15	502216	BOMBPOT	31-Jan-15
504365	RIDHISYN	30-Jan-15	531203	BRANDREAL	31-Jan-15
530917	RRSECUR	30-Jan-15	532929	BRIGADE	31-Jan-15
523025	SAFARIND	30-Jan-15	507486	CAPRO	31-Jan-15
511403	SAJEEV	30-Jan-15	530789	CEEJAY	31-Jan-15
515043	SAINTGOBAIN	30-Jan-15	538786	CIL	31-Jan-15
531893	SAWABUSI	30-Jan-15	531210	COLINZ	31-Jan-15
532638	SHOPERSTOP	30-Jan-15	521216	DHANROTO	31-Jan-15

503796	DIGJAM	31-Jan-15	505685	TAPARIA	31-Jan-15
532488	DIVISLAB	31-Jan-15	526576	TECHIN	31-Jan-15
531533	ECOM	31-Jan-15	524204	TEEAI	31-Jan-15
500125	EIDPARRY	31-Jan-15	532856	TIMETECHNO	31-Jan-15
531155	EPSOMPRO	31-Jan-15	531814	TIRSARJ	31-Jan-15
500086	EXIDEIND	31-Jan-15	500412	TIRUMALCHM	31-Jan-15
530705	FLORATX	31-Jan-15	532779	TORNTPOWER	31-Jan-15
514167	GANECOS	31-Jan-15	531279	TRISHAKT	31-Jan-15
531608	GORANIN	31-Jan-15	524408	UNIVSTAR	31-Jan-15
500300	GRASIM	31-Jan-15	531762	UNJHAFOR	31-Jan-15
532744	GTNTEX	31-Jan-15	512517	VINVANI	31-Jan-15
538838	ICL	31-Jan-15	538873	WINYCOMM	31-Jan-15
531672	INANISEC	31-Jan-15	520119	ASAL	02-Feb-15
505212	JAINEX	31-Jan-15	506285	BAYERCROP	02-Feb-15
538564	JAMESWARREN	31-Jan-15	500493	BHARATFORG	02-Feb-15
530405	JINDCAP	31-Jan-15	532443	CERA	02-Feb-15
530915	JRFOODS	31-Jan-15	511742	CHOKSEC	02-Feb-15
514448	JYOTIRES	31-Jan-15	523708	EIMCOELECO	02-Feb-15
533297	KBIL	31-Jan-15	511676	GICHSGFIN	02-Feb-15
508993	KEDIACN	31-Jan-15	522289	IFMIMPX	02-Feb-15
500239	KGDENIM	31-Jan-15	532054	KDDL-\$	02-Feb-15
500243	KIRLOSIND	31-Jan-15	500252	LAXMIMACH	02-Feb-15
532732	KKCL	31-Jan-15	533012	LPDC	02-Feb-15
509048	LANCORHOL	31-Jan-15	505324	MANUGRAPH-\$	02-Feb-15
530243	MANGASOF	31-Jan-15	500890	MODIRUBBER	02-Feb-15
530537	MANRAJH	31-Jan-15	506107	PRECTRA	02-Feb-15
531221	MAYURFL	31-Jan-15	532805	REDINGTON	02-Feb-15
526251	MIDEASTP	31-Jan-15	532915	RELIGARE	02-Feb-15
505594	MULTIIN	31-Jan-15	535322	REPCOHOME	02-Feb-15
515037	MURUDCERA	31-Jan-15	509845	RJSHAH	02-Feb-15
537291	NATHBIOGEN	31-Jan-15	522034	SHANTIGEAR	02-Feb-15
502168	NCLIND-\$	31-Jan-15	503229	SIMPLXREA	02-Feb-15
531272	NIKKIGL	31-Jan-15	517168	SUBROS	02-Feb-15
508875	NITINALOY	31-Jan-15	533306	SUMMITSEC	02-Feb-15
514326	PATSPINLTD	31-Jan-15	512527	SUPER-\$	02-Feb-15
530669	PRESOFI	31-Jan-15	526755	VELHO	02-Feb-15
526009	PROCAL	31-Jan-15	514470	WINSOMTX-\$	02-Feb-15
507962	RAJATH	31-Jan-15	532368	YBRANTDIGI	02-Feb-15
520073	RAUNAAQU	31-Jan-15	500410	ACC	03-Feb-15
532527	RKFORGE	31-Jan-15	517041	ADORWELD	03-Feb-15
530265	SAINIK	31-Jan-15	500825	BRITANNIA	03-Feb-15
532191	SBT	31-Jan-15	500093	CROMPGREAV	03-Feb-15
531745	SGLOBEX	31-Jan-15	502137	DECCANCE-\$	03-Feb-15
519031	SHAHFOOD	31-Jan-15	505700	ELECON	03-Feb-15
519397	SHINDL	31-Jan-15	530835	ELTROL	03-Feb-15
522152	SOLIMAC	31-Jan-15	500676	GSKCONS	03-Feb-15
516038	SOMAPPR	31-Jan-15	500182	HEROMOTOCO	03-Feb-15
524667	SOTL	31-Jan-15	531968	IITLPROJ	03-Feb-15
513488	SSWRL	31-Jan-15	533047	IMFA	03-Feb-15
590129	STARDELTA	31-Jan-15	504741	INDIANHUME	03-Feb-15
526231	STDSFAC	31-Jan-15	534816	INFRATEL	03-Feb-15
538876	STSERV	31-Jan-15	519606	INTEGFD	03-Feb-15



532286	JINDALSTEL	03-Feb-15	519224	WILLAMAGOR	04-Feb-15
500257	LUPIN	03-Feb-15	519214	WILLIMFI	04-Feb-15
531528	MAARSOFTW	03-Feb-15	532683	AIAENG	05-Feb-15
590078	MAITHANALL	03-Feb-15	513117	AMFORG	05-Feb-15
531213	MANAPPURAM	03-Feb-15	531878	ANJANIFIN	05-Feb-15
538834	MEL	03-Feb-15	532259	APARINDS	05-Feb-15
503772	MODWOOL	03-Feb-15	530429	ASHISHPO	05-Feb-15
532641	NDL	03-Feb-15	530885	AURUMSOFT	05-Feb-15
533098	NHPC	03-Feb-15	505010	AUTOAXLES	05-Feb-15
506532	NITTAGELA-\$	03-Feb-15	531719	BHAGCHEM	05-Feb-15
502420	ORIENTPPR	03-Feb-15	532173	CYBERTECH	05-Feb-15
532461	PNB	03-Feb-15	532424	GODREJCP	05-Feb-15
500387	SHREECEM	03-Feb-15	526797	GREENPLY	05-Feb-15
526877	SIDDHEGA	03-Feb-15	500306	JAYKAY	05-Feb-15
505650	SKYLMILAR	03-Feb-15	533148	JSWENERGY	05-Feb-15
532348	SUBEX	03-Feb-15	507598	KLRF	05-Feb-15
590072	SUNDRMBRAK	03-Feb-15	504258	LAKSELEC	05-Feb-15
534369	TBZ	03-Feb-15	500126	MERCK	05-Feb-15
522113	TIMKEN	03-Feb-15	524709	NAGAAGRI	05-Feb-15
506687	TRANSPEK-\$	03-Feb-15	535755	PFRL	05-Feb-15
532343	TVSMOTOR	03-Feb-15	500338	PRISMCEM	05-Feb-15
590073	WHEELS	03-Feb-15	532524	PTC	05-Feb-15
530889	ALKA	04-Feb-15	509220	PTL-\$	05-Feb-15
532047	ASIANFILMS	04-Feb-15	531562	PUSHPIN	05-Feb-15
524804	AUOPHARMA	04-Feb-15	500260	RAMCOCEM	05-Feb-15
532454	BHARTIARTL	04-Feb-15	532369	RAMCOIND	05-Feb-15
500020	BOMDYEING	04-Feb-15	531638	SURAJLTD-\$	05-Feb-15
500280	CENTENKA	04-Feb-15	532513	TVSELECT	05-Feb-15
532885	CENTRALBK	04-Feb-15	532774	AFL	06-Feb-15
500040	CENTURYTEX	04-Feb-15	530973	ALFAICA	06-Feb-15
521056	CHESLINTEX	04-Feb-15	500877	APOLLOTYRE	06-Feb-15
522261	DOLPHINOFF-\$	04-Feb-15	520121	ARCEEIN	06-Feb-15
533248	GPPL	04-Feb-15	531179	ARMANFIN	06-Feb-15
508486	HAWKINCOOK	04-Feb-15	532382	BALAJITELE	06-Feb-15
501295	IITL	04-Feb-15	500038	BALRAMCHIN	06-Feb-15
512237	JAICORPLTD	04-Feb-15	532834	CAMLINFIN	06-Feb-15
502901	JAMSHRI-\$	04-Feb-15	500085	CHAMBLFERT	06-Feb-15
506943	JBCHEPHARM	04-Feb-15	505242	DYNAMATECH	06-Feb-15
507779	KANPRPLA	04-Feb-15	532181	GMDCLTD	06-Feb-15
537750	KIRANVYPAR	04-Feb-15	505737	INTLCOMBQ	06-Feb-15
524000	MAGMA	04-Feb-15	532617	JETAIRWAYS	06-Feb-15
506261	MODISNME-\$	04-Feb-15	590084	KANCOENT	06-Feb-15
523630	NFL	04-Feb-15	521242	KANDAGIRI-\$	06-Feb-15
500672	NOVARTIND	04-Feb-15	517344	MINDTECK	06-Feb-15
506579	ORIENTCQ-\$	04-Feb-15	520043	MUNJALSHOW	06-Feb-15
500458	PHILCORP	04-Feb-15	532460	PONNIERODE	06-Feb-15
533168	ROSSELLIND	04-Feb-15	523874	PRECISION	06-Feb-15
511654	SUGALDAM	04-Feb-15	526109	PRICOL	06-Feb-15
520056	SUNCLAYLTD	04-Feb-15	531412	RADIXIND	06-Feb-15
500403	SUNDRMFAST	04-Feb-15	521240	SAMBANDAM-\$	06-Feb-15
500400	TATAPOWER	04-Feb-15	516003	SARDAPLY	06-Feb-15
533158	THANGAMAYL	04-Feb-15	521182	SEASONF	06-Feb-15
504973	TUBEINVEST	04-Feb-15	503804	SHRIDINE-\$	06-Feb-15
500231	UMANGDAIR	04-Feb-15	505192	SMLISUZU	06-Feb-15

513575	STERS	06-Feb-15	500170	GTNINDS	10-Feb-15
508963	STRLGUA	06-Feb-15	534734	ICVLCHEM	10-Feb-15
532782	SUTLEJTEX	06-Feb-15	536868	INTELSOFT	10-Feb-15
500770	TATACHEM	06-Feb-15	517334	MOTHERSUMI	10-Feb-15
500470	TATASTEEL	06-Feb-15	530697	NEELKATEC	10-Feb-15
530199	THEMISMED	06-Feb-15	526721	NICCOPAR-\$	10-Feb-15
532515	TVTODAY	06-Feb-15	538860	PANAFIC	10-Feb-15
531574	VASINFRA	06-Feb-15	526801	PSL	10-Feb-15
530063	YASHRAJC	06-Feb-15	512099	PUNITCO	10-Feb-15
530803	BHAGERIA	07-Feb-15	517496	RICOHQ	10-Feb-15
530307	CHAMANSEQ-\$	07-Feb-15	530073	SANGHVIMOV	10-Feb-15
531599	FDC	07-Feb-15	530035	SANTOSHF	10-Feb-15
517300	GIPCL	07-Feb-15	511185	SURYAKR	10-Feb-15
513528	GLITTEKG	07-Feb-15	530363	UGARSUGAR-\$	10-Feb-15
504176	HIGHENE	07-Feb-15	531091	UNITDCR	10-Feb-15
500500	HINDMOTORS	07-Feb-15	500780	ZUARIGLOB	10-Feb-15
532644	JKCEMENT	07-Feb-15	506166	APIS	11-Feb-15
521127	KHTRFIB	07-Feb-15	526851	AREXMIS	11-Feb-15
526947	LAOPALA	07-Feb-15	519174	ASHAI	11-Feb-15
500333	PIXTRANS	07-Feb-15	506820	ASTRAZEN	11-Feb-15
526490	PRATIK	07-Feb-15	500043	BATAINDIA	11-Feb-15
533470	RUSHIL	07-Feb-15	500547	BPCL	11-Feb-15
502450	SESHAPAPER	07-Feb-15	520131	COARO	11-Feb-15
533281	TECHNO	07-Feb-15	500645	DEEPAKFERT	11-Feb-15
522122	VOITHPAPR-\$	07-Feb-15	531237	DHRUVCA	11-Feb-15
516030	YASHPPR-\$	07-Feb-15	500164	GODREJIND	11-Feb-15
522108	YUKEN-\$	07-Feb-15	531882	KWALITY	11-Feb-15
530233	AUROLAB	09-Feb-15	502958	LAKSHMIMIL-\$	11-Feb-15
531278	AXISCAP	09-Feb-15	530557	NCLRESE	11-Feb-15
532992	CHLLTD	09-Feb-15	532810	PFC	11-Feb-15
504697	GALADA	09-Feb-15	520151	SHREYAS	11-Feb-15
523586	INDTONER-\$	09-Feb-15	512153	SPECMKT	11-Feb-15
523248	MACPLASQ-\$	09-Feb-15	530151	VIJAYTX	11-Feb-15
532865	MEGH	09-Feb-15	509038	VOLLF	11-Feb-15
500307	NIRLON	09-Feb-15	538563	ADARSH	12-Feb-15
504879	ORIENTABRA-\$	09-Feb-15	531223	ANJANI-\$	12-Feb-15
504093	PANAENERG-\$	09-Feb-15	530799	ANNAINFRA	12-Feb-15
531944	SERVOTEC	09-Feb-15	500031	BAJAJELEC	12-Feb-15
530759	STERTOOLS-\$	09-Feb-15	508939	BLCISER	12-Feb-15
506222	STYABS	09-Feb-15	530609	CARNATIN	12-Feb-15
522267	VJLAXMIE-\$	09-Feb-15	530839	CLIOINFO	12-Feb-15
500002	ABB	10-Feb-15	530779	DYNAMICP	12-Feb-15
500303	ABIRLANUVO	10-Feb-15	531463	GBLINFRA	12-Feb-15
526331	ADVMULT	10-Feb-15	505250	GGDANDE	12-Feb-15
506947	ADVPETR-B	10-Feb-15	507815	GILLETTE	12-Feb-15
500048	BEML	10-Feb-15	526931	HRYNSHP-\$	12-Feb-15
532321	CADILAHC	10-Feb-15	532001	INDCTST	12-Feb-15
534804	CARERATING	10-Feb-15	538422	JACKSON	12-Feb-15
504671	CHASBRT	10-Feb-15	526558	JAMEHOT	12-Feb-15
523736	DPL	10-Feb-15	511092	JMDTELEFILM	12-Feb-15
513059	GSAUTO	10-Feb-15	530201	KALLAM-\$	12-Feb-15

535730	KHOBSURAT	12-Feb-15	523652	KPLASTIK	13-Feb-15
517471	KOATOOLIN	12-Feb-15	530421	KUWERIN	13-Feb-15
531689	MAHAREM	12-Feb-15	531288	LEADFIN	13-Feb-15
530897	NGIND-\$	12-Feb-15	506113	LIFELINE	13-Feb-15
511632	OLYMTFI	12-Feb-15	532537	LUMAXAUTO	13-Feb-15
532827	PAGEIND	12-Feb-15	500520	M&M	13-Feb-15
506122	PANKPIY	12-Feb-15	514456	METROOV	13-Feb-15
535658	PAWANSUT	12-Feb-15	532164	MINOLTAF	13-Feb-15
500459	PGHH	12-Feb-15	501343	MOTOGENFIN	13-Feb-15
526043	POLYCHMP	12-Feb-15	526299	MPHASIS	13-Feb-15
538452	QUASAR	12-Feb-15	534184	NAGAROIL	13-Feb-15
503837	SHRAJSYNQ-\$	12-Feb-15	514332	NEOINFRA	13-Feb-15
523236	SHRENUJ	12-Feb-15	511714	NIMBSPROJ	13-Feb-15
532945	SHRIRAMEPC	12-Feb-15	511674	OLYCAP	13-Feb-15
526901	SONALAD	12-Feb-15	514324	OMNITEX	13-Feb-15
526161	SPENTA	12-Feb-15	531257	PRATIKSH	13-Feb-15
526827	SPICEISL-\$	12-Feb-15	535514	PRIMECAPM	13-Feb-15
500399	STEELCO	12-Feb-15	515127	RAMMA	13-Feb-15
523425	SUNRAJDI	12-Feb-15	531583	RAP	13-Feb-15
532035	UNISTRMU	12-Feb-15	531033	REGAL	13-Feb-15
521188	UNITEDTE	12-Feb-15	521222	SANBLUE	13-Feb-15
526941	VAICC	12-Feb-15	507952	SHIKHARLETR	13-Feb-15
526775	VALIANT-\$	12-Feb-15	506655	SUDARSCHEM	13-Feb-15
515099	VERTICLIND	12-Feb-15	531411	TUNITEX	13-Feb-15
511122	1STCUS	13-Feb-15	531831	UNISH	13-Feb-15
521174	ARORAFIB	13-Feb-15	511690	WARNER	13-Feb-15
513401	ASHIS	13-Feb-15	509910	ZSOUTGAS	13-Feb-15
517203	BEELE	13-Feb-15	531047	ADVPOWER	14-Feb-15
519500	BKV	13-Feb-15	508869	APOLLOHOSP	14-Feb-15
532324	CINEVISTA	13-Feb-15	531900	CCLINTER	14-Feb-15
512213	CLASELE	13-Feb-15	531119	CEENIK	14-Feb-15
530859	COSBOARD	13-Feb-15	533144	COX&KINGS	14-Feb-15
505678	CPECLTD	13-Feb-15	512485	DHANCOT	14-Feb-15
530171	DAULAT	13-Feb-15	526073	GALXBRG	14-Feb-15
535486	DELTAITD	13-Feb-15	532133	IFGLREFRAC	14-Feb-15
531252	FARRYIND	13-Feb-15	512025	INERTIAST	14-Feb-15
534757	FOCUSIRL	13-Feb-15	526409	KALPENA	14-Feb-15
531196	GAGANPO	13-Feb-15	517467	MARSONS	14-Feb-15
521176	GANGOTRI	13-Feb-15	509040	NETLINK	14-Feb-15
531479	GLOBAL	13-Feb-15	530061	ROCKTHR	14-Feb-15
530263	GLOBALCA	13-Feb-15	530125	SAMRATPH-\$	14-Feb-15
531737	GREENCREST	13-Feb-15	524703	SANDUPHQ	14-Feb-15
511543	GSBFIN	13-Feb-15	526532	SFPIL	14-Feb-15
531918	HINDAPL	13-Feb-15	530797	SHGANEL	14-Feb-15
517044	IDM	13-Feb-15	512221	TARCF	14-Feb-15
500202	INDLEASE	13-Feb-15	590035	TIRFOAM-\$	15-Feb-15
504840	KAIRA	13-Feb-15	500425	AMBUJACEM	18-Feb-15
504269	KHAITANELE	13-Feb-15	500166	GOODRICKE	28-Feb-15

## Consensus Estimate Q3FY15

BSE Code	NSE Code	Sales ( Cr.)	Sales Growth(%)	PAT( Cr.)	PAT Growth (%)
500049	BEL	1409.7	198.40	197.7	17.30
532538	ULTRACEMCO	5713.2	997.10	411.9	19.40
500830	COLPAL	1021	183.90	137.5	15.50
500696	HINDUNILVR	8111.8	1411.50	1058.8	12.30
500875	ITC	9774.1	3772.80	2802.5	12.00
532432	MCDOWELL-N	2437.9	243.80	108.5	7.00
532523	BIOCON	768.7	178.30	107.8	9.80
532839	DISHTV	713.6	181.20	-0.2	14.40
505537	ZEEL	1239.7	398.20	293.4	4.30
500188	HINDZINC	4078.4	2234.10	2366	18.20
506395	COROMANDEL	3067.6	248.50	124.9	11.30
532777	NAUKRI	154.2	51.30	51.4	25.00
532792	CAIRN	3223	1952.40	1433.2	(35.50)
533274	PRESTIGE	630.5	167.10	103.2	46.50
532400	KPIT	768.4	109.60	67.1	13.40
532819	MINDTREE	916.4	184.50	142.5	15.90
533179	PERSISTENT	495.8	117.60	74.8	14.60
531807	INGVYSYABK	512.3	338.20	185	23.10
500247	KOTAKBANK	1076.7	743.60	459.4	18.00
535789	IBULHSGFIN	572.3	602.30	457.7	(1.30)
511218	SRTRANSFIN	1042.6	789.60	336.3	11.90

## Result Q3FY15

NSE Code	BSE Code	Sales ( Cr.)	Sales Growth(%)	PAT( Cr.)	PAT Growth (%)
KPIT	532400	780	15.00	65	7.40
RAYMOND	500330	1383	14.40	56	(1.40)
BLUESTARCO	500067	591	8.20	6	124.20
SUPPETRO	500405	614	(24.60)	(59)	(337.27)
TTL	514142	177	(6.30)	4	324.24
L&TFIN	533519	1572	23.40	182	65.60
TTKPRESTIG	517506	393	6.30	28	(4.85)
EVERESTIND	508906	278	20.40	1	218.75
IFBAGRO	507438	140	8.80	1	(86.30)
SIYSIL	503811	330	7.20	13	(7.78)
EMCO	504008	239	33.30	1	(13.13)
IONEXCHANG	500214	198	15.80	6	127.87
LLOYDMETAL	512455	118	(8.00)	(7)	(12.35)
PANCARBON	508941	10	13.40	2	32.43
RAJTV	532826	20	(18.50)	2	(58.12)
RANEENGINE	532988	60	(7.40)	(3)	(1039.29)
TATAYODOGA	504961	34	4.80	(16)	(9.66)
TINPLATE	504966	221	(14.90)	7	(46.66)
MUTHOOTFIN	533398	1068	(10.70)	154	(20.49)
Mastek Ltd.	523704	268	8.70	9	(52.60)
DISHTV	532839	713	14.30	(3)	89.88
STRTECH	532374	894	31.50	23	325.46
SOMANYCERA	531548	375	31.80	11	130.54
KGKHOSLA	505283	102	11.20	3	33.51
ORIENTCEM	535754	384	12.60	31	35.75
SOLARINDS	532725	249	17.20	26	38.29
IPAPPM	502330	278	(8.20)	1	114.58

DEEPAKNTR	506401	306	(9.50)	21	84.14
PARRYSUGAR	500162	43	5.60	(3)	44.68
SUPREMEIND	509930	1065	9.30	53	(15.80)
CAIRN	532792	3504	(17.10)	1349	(53.20)
ZEEMEDIA	532794	139	51.60	(9)	(258.60)
POLARIS	532254	476	(26.10)	39	(22.70)
ZUARI	534742	1436	(7.80)	17	0.18
TATAMETALIKS	513434	321	(13.20)	20	1636.20
ATFL	500215	195	(1.10)	9	(28.10)
VSTIND	509966	198	(6.60)	30	(21.55)
KOTAKBANK	500247	3397	12.79	716	21.51
SOUTHBANK	532218	319	(8.80)	87.93	(37.77)
ING VYSYA	531807	491.8	18.02	145.7	(12.90)

### Economic Calendar

	Monday 19-Jan-15	Tuesday 20-Jan-15	Wednesday 21-Jan-15	Thursday 22-Jan-15	Friday 23-Jan-15
US		Flash Manufacturing PMI , NAHB Housing Market Index .	Building Permits , Crude Oil Inventories .	Unemployment Claims ,Flash Services PMI , Natural Gas Storage .	Existing Home Sales .CB Leading Index m/m .
UK/EURO ZONE	German Buba Monthly Report .	German Buba Monthly Report , French Flash Manufacturing PMI , French Flash Services PMI , German Flash Manufacturing PMI , German Flash Services PMI , Flash Manufacturing PMI , German ZEW Economic Sentiment , ZEW Economic Sentiment .	Average Earnings Index 3m/y , Claimant Count Change , MPC Official Bank Rate Votes , MPC Asset Purchase Facility Votes , Unemployment Rate .	Spanish Unemployment Rate , Public Sector Net Borrowing , CBI Realized Sales , Minimum Bid Rate , ECB Press Conference .	Retail Sales m/m .
INDIA					



## Narnolia Securities Ltd

124, 1st floor 7/ 1, Lords Sinha Road Kolkata 700071, Ph 033-22821251 Toll Free no : 1-800-345-4000

email: [research@narnolia.com](mailto:research@narnolia.com),

website : [www.narnolia.com](http://www.narnolia.com)

**Risk Disclosure & Disclaimer:** This report/message is for the personal information of the authorized recipient and does not construe to be any investment, legal or taxation advice to you. Narnolia Securities Ltd. (Hereinafter referred as NSL) is not soliciting any action based upon it. This report/message is not for public distribution and has been furnished to you solely for your information and should not be reproduced or redistributed to any other person in any form. The report/message is based upon publicly available information, findings of our research wing "East wind" & information that we consider reliable, but we do not represent that it is accurate or complete and we do not provide any express or implied warranty of any kind, and also these are subject to change without notice. The recipients of this report should rely on their own investigations, should use their own judgment for taking any investment decisions keeping in mind that past performance is not necessarily a guide to future performance & that the the value of any investment or income are subject to market and other risks. Further it will be safe to assume that NSL and /or its Group or associate Companies, their Directors, affiliates and/or employees may have interests/ positions, financial or otherwise, individually or otherwise in the recommended/mentioned securities/mutual funds/ model funds and other investment products which may be added or disposed including & other mentioned in this report/message.