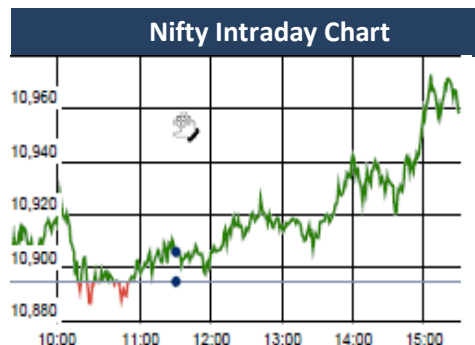


KEY LEVELS

Support 1 : 10659
Support 1 : 10592

Resistance 1 : 11040



Event Today

Bonus Issue

EXCEL (Ratio : 2:1)
(Ex Date : 22. 1.2018)

Result

ALEMBICLTD , CANFINHOME,
CROMPTON , EDELWEISS , IBREALEST
IBULHSGFIN , NIITLTD , NUCLEUS
PNBHOUSING , RBLBANK, SWARAJENG
SYMPHONY , VINYLINDIA
WABCOINDIA

Concall

Mahindra CIE : 10:30 AM
Navkar Corporation : 11:30 AM
DHFL , V-Guard : 3:00 PM
DCM Shriram Ltd : 12:00 PM
NIIT , Care Rating : 3:30 PM
Indiabulls housing , Symphony : 4:00 PM
HOEC , MPS, Can Fin Homes :4:00 PM
RBL BANK : 5:00 PM
Just DiaL : 6:00 PM

Market Outlook

Indian equities continued it's up move yesterday and after opening on a positive session, Nifty rose to make a high of 10974.80. At the end of the day the index closed at 10966.20. It had a net gain of 0.66% over the previous trading day's close. The broader market was in favor of bulls and the small cap and midcap indices slightly out-performed the benchmark index and closed the day after gaining 0.7%-0.9%.

On the sectoral front, Realty and Information Technology stocks were on the buyers' radar while Metal and PSU banking indices closed in red. The breadth of the market was slightly positive with more advances than declines. Investor sentiment continues to be highly positive. Nifty put writers are writing options of higher strike price almost as quickly as Nifty makes newer high. On-going Q3 quarter results are unfolding almost in-line with the street expectations. And double-digit growth for Nifty EPS in FY18 is almost secured.

Though there does not yet appear any threat to this on-going rally in terms of market technicals, it's worth to remember that stock market can never be a one-way street. So it would be prudent to continue trading long but with trailing stop loss. Post fresh gap made again this Monday, Nifty trend reversal level gets shifted upward to 10,592.

Market

Market	Value	% Change
Morning Traded Market		
SGX NIFTY	10,998.00	0.26%
NIKKIE	24,001.02	0.77%
HANG SENG	32,587.18	0.59%
Yesterday Closing Market		
Sensex	35,798.01	0.81%
Nifty	10,966.20	0.66%
DOW	26,214.60	0.55%
NASDAQ	7,408.03	0.97%
CAC	5,541.99	0.28%
DAX	13,463.69	0.22%
FTSE	7,715.44	-0.20%
EW ALL SHARE	20,500.02	0.74%

% Change in 1 day

Commodity Price (Yesterday Closing)

Commodity/Currencies	Value	% Change
GOLD	29852.00	0.33%
SILVER	38979.00	0.03%
CRUDEOIL	69.36	0.07%
NATURALGAS	206.30	1.38%
DOLLAR/RS.	63.87	0.04%
EURO/RS.	78.29	-0.04%
POUND/RS.	88.83	0.15%

% Change in 1 day

Institutional Turnover

FII			
Investor	Buy(Cr.)	Sale(Cr.)	Net(Cr.)
22-Jan-18	7002	5435	1568
Jan-18	87394	80818	6575
2018	87394	80818	6575
DII			
Investor	Buy(Cr.)	Sale(Cr.)	Net(Cr.)
22-Jan-18	3583	4045	(462)
Jan-18	59434	59147	286
2018	59434	59147	286

Quote of the Day : "We've long felt that the only value of stock forecasters is to make fortune tellers look good. Even now, Charlie (Munger) and I continue to believe that short-term market forecasts are poison and should be kept locked up in a safe place, away from children and also from grown-ups who behave in the market like children." **Warren Buffett**

DCMSHRIRAM

"ACCUMULATE"

23th Jan 2018

DCM Shriram has reported sales of Rs 1784 Cr, in line with our estimates. Sales grew by 23.2% YOY on account of growth in revenues of Chlor-Vinyl Business on account of full utilization of expanded capacities at Bharuch, supported by firm prices. Margin improvement was driven by the increase in Chlor-alkali volume and higher realization in the Chloro-Vinyl business. Good monsoon season had a positive impact on the demand for the company's products and are evident from the growth in revenues in the last two quarters. Rising input cost particularly coal, salt as the global energy prices are going up, could create some pressure on the margin. Also, any significant increase in cane cost going forward could adversely impact the financial performance and cash generation potential of the company. Keeping in mind near term headwind related to declining sugar prices and increasing input cost we maintain ACCUMULATE with a target price of Rs. 695

TATAELXSI

"NEUTRAL"

23th Jan 2018

Management is expecting automotive OEMs' which focus on design, infotainment, vehicle electronics, safety, VR/AR-based digital experience and autonomous cars to drive segmental ER&D investment over the next few years. Management remains confident of exploring opportunities that lie ahead in its specialized verticals of automotive, video broadcasting, healthcare and industrial design. Moreover we are positive with the recent development related to Tataelxsi penetration into Healthcare vertical in areas of designing of medical devices is expected to drive growth going forward. But softness in System Integration and industrial design segment (contributes 3%/ 12% of total revenue) makes us slightly apprehensive about strong growth in near term. So we are NUETRAL on the stock with limited upside at target price of Rs 1138 at 25x FY19e EPS

*For details, refer to our daily report- India Equity Analytics

Top News

>> **NMDC Mgt Guideline** : NMDC Ltd aims to produce about 45 million tonnes (MT) of iron ore during the next financial year as against the expected 35 million tonnes in the current fiscal . Company achieved 34.5 million tonnes of production. This year (FY18) the first two quarters were good. But unfortunately during the third quarter there was some problem in terms of rains affecting railway line.

Company will be at par with that (output) for this year (FY18) if not exceeding it. Company is aiming 37 MT for FY18, but company may up a little bit below...35 MT is a safe assumption.

Company has to go up to 67 MT by 2022. For FY19, Company is looking at 43-45 MT production. It again depends on factors like logistics

Company has spent about Rs 13,000 crore on the plant so far and expected to spend about Rs 2000 to Rs 3000 crore more to complete it.

Company is requesting the Madhya Pradesh government to allot some diamond mines to NMDC on a nomination basis.

The PSU scaled down diamond mining activities at Panna in MP due to issues related to wildlife protection and environment.

The diamond mining capacity is pegged at about one lakh carat per annum, the company is producing 35,000 to 36,000 carat only

>> **GNA Axles Mgt Guideline** : Company will look to post revenue of Rs 600 crore in FY18 . The overall market conditions have been positive. Company is targeting growth of 15 percent in FY19.

On margin front, Company expect margin to stay between 15 percent and 16 percent.

Company is looking to add capacities for off-highway vehicles

>> **DCM Shriram Limited CONCALL HIGHLIGHTS FOR 3QFY18**

→Company expects to sustain the trend of high capacity utilization (~ 100% capacity utilization) at Bharuch for chemical Business.

→Capacity expansion of Chlor-alkali at Kota (84TPD) and Bharuch (146TPD) at an investment of Rs98Cr. Bharuch expansion is expected to be completed by Q1FY20 and Kota by Q2FY20. These projects underway- are progressing as per plan.

→Domestic prices will follow global price trends.

→The prices of PVC as well as Carbide will be stable going ahead.

→The 150 KLD Distillery project at Hariawan unit will be commissioned by end of Jan'18.

→As on 30th December sugar was valued at Rs. 3350 per quintal and the inventory was 12lakh quintals.

→As of now the price of sugar price is still hovering between Rs. 33-32.5 / per kg.

→Management is hopeful that pricing pressure on sugar will come down from middle of February.

→For the Fenesta segment outlook is positive because of the Improvement in the overall economic scenario and uptick in the Real Estate sector which will enable higher penetration of UPVC window offerings.

>> **Parag Milk Foods Mgt Guideline** : Parag Milk Foods is expecting a dip in revenue growth to up to 15 percent per annum over the next three years, and will focus on dairy FMCG products in this period

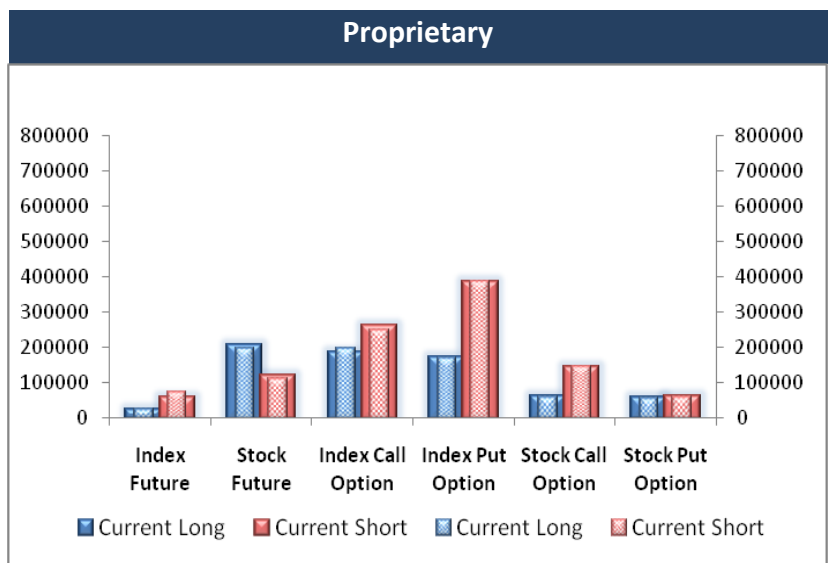
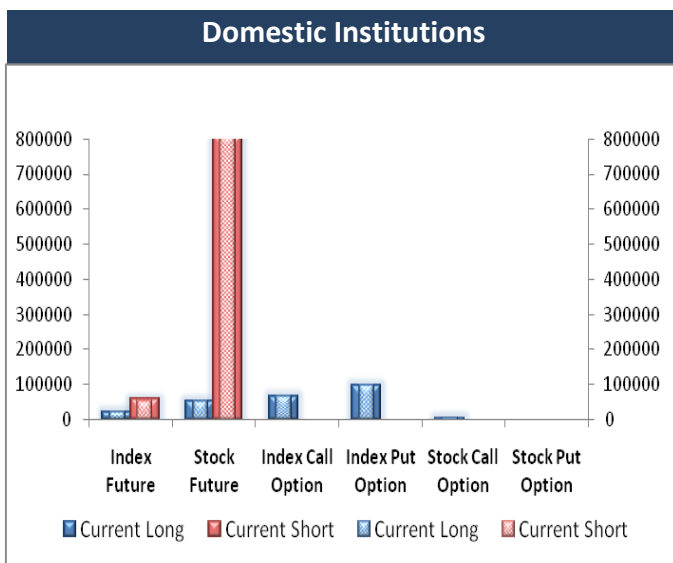
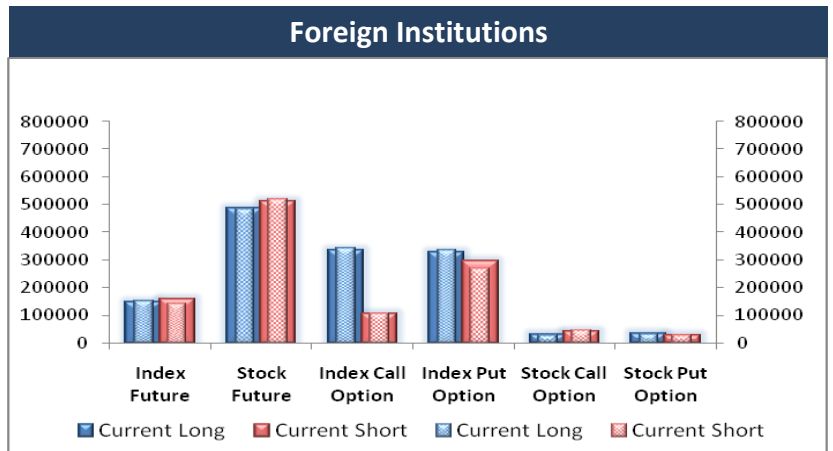
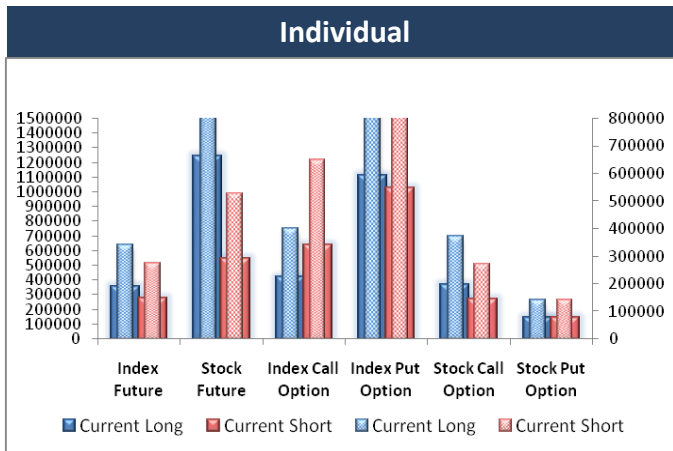
The future growth will come mainly from traditional products like liquid milk, ghee, paneer and curd, which are expected to grow by 15 per cent, while modern products like UHT milk, flavoured milk, cheese and whey powder may grow by 26 per cent by 2020

Parag Food plans to increase operation efficiencies by leveraging in-house technological, R&D capabilities and strengthening brands. It is looking at focusing on introducing healthy and nutritious products.

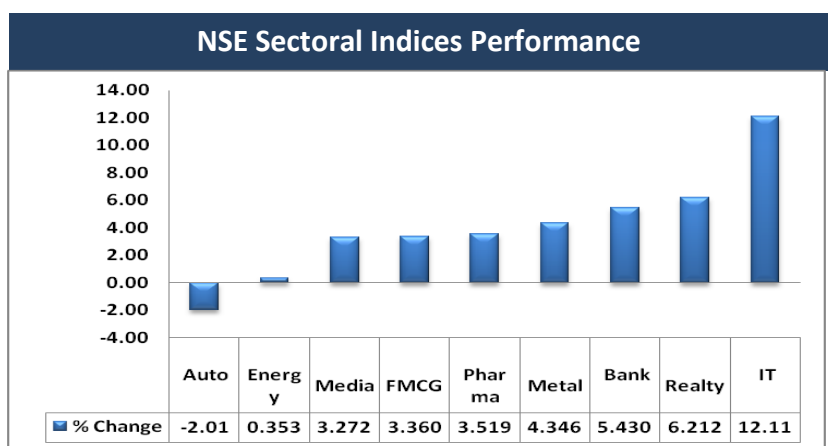
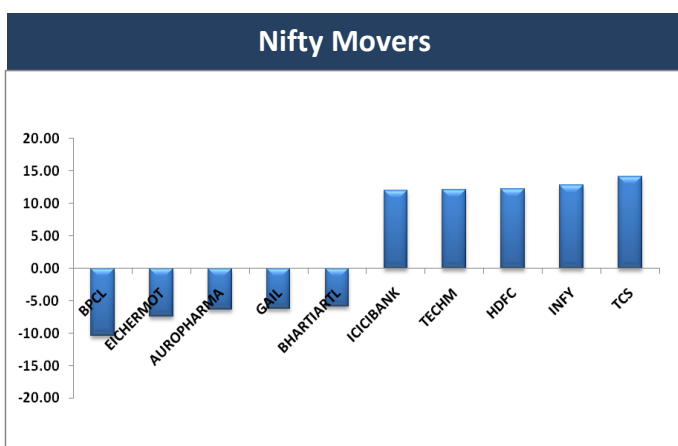
Block Deal

Exchange	Deal Date	Company	Client Name	Deal Type	Quantity	Price
NSE	22-Jan-18	8KMILES	DSP BLACKROCK MUTUAL FUND	BUY	426281	748
NSE	22-Jan-18	CELEBRITY	DARSHANNA BHAVESH PANDYA	BUY	625435	21
NSE	22-Jan-18	CEREBRAINT	SHAH AMI NIRAJ	BUY	791500	57
NSE	22-Jan-18	JPASSOCIAT	ADROIT FINANCIAL SERVICES PRIVATE LIMITED	BUY	15339281	23
NSE	22-Jan-18	JPASSOCIAT	ADROIT SHARE & STOCK BROKER PVT. LTD.	BUY	18500469	23
NSE	22-Jan-18	JUSTDIAL	CROSSLAND TRADING CO	BUY	504054	581
NSE	22-Jan-18	JUSTDIAL	QE SECURITIES	BUY	348619	582
NSE	22-Jan-18	JUSTDIAL	SHAASTRA SECURITIES TRADING PRIVATE LIMITED	BUY	414290	580
NSE	22-Jan-18	LINCOLN	KIRJAL SECUTITIES PVT. LTD	BUY	188338	261
NSE	22-Jan-18	LUXIND	KOTAK MAHINDRA ASSET MANAGEMENT CO LTD (PMS)	BUY	168898	1525
NSE	22-Jan-18	MAJESCO	RELAN AJAY KUMAR	BUY	120000	551
NSE	22-Jan-18	MCX	SBI MUTUAL FUND	BUY	819048	841
NSE	22-Jan-18	NDGL	RAMESHBHAI CHINUBHAI SHAH	BUY	6452	1953
NSE	22-Jan-18	NDGL	SWAY FINANCIAL SERVICES	BUY	5000	2064
NSE	22-Jan-18	PRAKASHCON	BP FINTRADE PRIVATE LIMITED	BUY	519193	8
NSE	22-Jan-18	RELIGARE	BP FINTRADE PRIVATE LIMITED	BUY	1206478	50
NSE	22-Jan-18	SILLYMONKS	DOSHI SHAKUNTALA RAMNIKLAL	BUY	24000	157
NSE	22-Jan-18	SILLYMONKS	LUV GUPTA	BUY	31200	157
NSE	22-Jan-18	SILLYMONKS	RAJ KUMAR BANSAL	BUY	30000	169
NSE	22-Jan-18	SILLYMONKS	SHETH BROTHERS	BUY	49200	159
NSE	22-Jan-18	SILLYMONKS	VIPIN AGGARWAL	BUY	27600	156
NSE	22-Jan-18	8KMILES	RAMANI R S	SELL	432506	749
NSE	22-Jan-18	8KMILES	RAMANI R S	SELL	250000	750
NSE	22-Jan-18	CELEBRITY	DARSHANNA BHAVESH PANDYA	SELL	791022	20
NSE	22-Jan-18	CELESTIAL	DECCAN ENTERPRISES	SELL	322795	19
NSE	22-Jan-18	CEREBRAINT	SHAH AMI NIRAJ	SELL	100000	56
NSE	22-Jan-18	JPASSOCIAT	ADROIT FINANCIAL SERVICES PRIVATE LIMITED	SELL	14752477	23
NSE	22-Jan-18	JPASSOCIAT	ADROIT SHARE & STOCK BROKER PVT. LTD.	SELL	18398469	23
NSE	22-Jan-18	JPASSOCIAT	RAJESH GUPTA	SELL	26765374	22
NSE	22-Jan-18	JUSTDIAL	CROSSLAND TRADING CO	SELL	504054	581
NSE	22-Jan-18	JUSTDIAL	QE SECURITIES	SELL	360495	581
NSE	22-Jan-18	JUSTDIAL	SHAASTRA SECURITIES TRADING PRIVATE LIMITED	SELL	414290	580
NSE	22-Jan-18	KEERTI	PANDYA VAIBHAV S	SELL	18000	54
NSE	22-Jan-18	LINCOLN	KIRJAL SECUTITIES PVT. LTD	SELL	188338	262
NSE	22-Jan-18	LUXIND	VENERABLE ADVERTISING PRIVATE LIMITED	SELL	134043	1522
NSE	22-Jan-18	MAJESCO	RELAN AJAY KUMAR	SELL	20000	551
NSE	22-Jan-18	MCX	BARON INTERNATIONAL GROWTH FUND	SELL	1131252	841
NSE	22-Jan-18	NDGL	RAMESHBHAI CHINUBHAI SHAH	SELL	4922	2064
NSE	22-Jan-18	NDGL	SWAY FINANCIAL SERVICES	SELL	5000	1948
NSE	22-Jan-18	PRAKASHCON	BP FINTRADE PRIVATE LIMITED	SELL	719193	8
NSE	22-Jan-18	RELIGARE	BP FINTRADE PRIVATE LIMITED	SELL	1206478	51
NSE	22-Jan-18	RELIGARE	IDBI TRUSTEESHIP SERVICES LTD	SELL	2255731	50
NSE	22-Jan-18	SANCO	ALPA M GHELANI	SELL	75075	44
NSE	22-Jan-18	SILLYMONKS	DOSHI SHAKUNTALA RAMNIKLAL	SELL	24000	157
NSE	22-Jan-18	SILLYMONKS	LUV GUPTA	SELL	4800	159
NSE	22-Jan-18	SILLYMONKS	SHETH BROTHERS	SELL	49200	160
NSE	22-Jan-18	SILLYMONKS	VIPIN AGGARWAL	SELL	6000	159
NSE	22-Jan-18	VIDEOIND	LTD YES BANK	SELL	1739740	21

F&O OPEN INTEREST (Number of Contracts)



MARKET MOVERS (1 MONTH CHANGE)



Result Calendar Q3FY18

Bse Code	Company Name	Date	Bse Code	Company Name	Date
506235	ALEMBICLTD	23-Jan-18	506365	CHEMOPH	24-Jan-18
522134	ARTSONEN	23-Jan-18	526817	CHEVIOT	24-Jan-18
511196	CANFINHOME	23-Jan-18	531344	CONCOR	24-Jan-18
539876	CROMPTON	23-Jan-18	531556	CORALFINAC	24-Jan-18
532329	DANLAW	23-Jan-18	540701	DCAL	24-Jan-18
505526	DOLAT	23-Jan-18	500120	DIAMINESQ	24-Jan-18
532922	EDELWEISS	23-Jan-18	539267	DRHABEEB	24-Jan-18
533477	ENKEIWHEL	23-Jan-18	508906	EVERESTIND	24-Jan-18
500033	FORCEMOT	23-Jan-18	502865	FORBESCO	24-Jan-18
523696	FORTISMLR	23-Jan-18	512493	GARNETINT	24-Jan-18
531953	GCCL	23-Jan-18	530343	GENUSPOWER	24-Jan-18
524669	HESTERBIO	23-Jan-18	532285	GEOJITFSL	24-Jan-18
532832	IBREALEST	23-Jan-18	533263	GREENPOWER	24-Jan-18
535789	IBULHSGFIN	23-Jan-18	530141	GYANDEV	24-Jan-18
540115	LTTS	23-Jan-18	534328	HEXATRADEX	24-Jan-18
523828	MENONBE	23-Jan-18	509675	HIL	24-Jan-18
500304	NIITLTD	23-Jan-18	532960	IBVENTURES	24-Jan-18
531209	NUCLEUS	23-Jan-18	532822	IDEA	24-Jan-18
517536	ONWARDTEC	23-Jan-18	539448	INDIGO	24-Jan-18
500314	ORIENTHOT	23-Jan-18	500214	IONEXCHANG	24-Jan-18
531779	PADALPO	23-Jan-18	540526	IRBINVIT	24-Jan-18
540173	PNBHOUSING	23-Jan-18	500378	JINDALSAW	24-Jan-18
500337	PRIMESECU	23-Jan-18	540311	JITFINFRA	24-Jan-18
517522	RAJGLOWIR	23-Jan-18	534600	JTLINFRA	24-Jan-18
540065	RBLBANK	23-Jan-18	517569	KEI	24-Jan-18
532661	RML	23-Jan-18	500245	KIRLFER	24-Jan-18
500367	RUBFILA	23-Jan-18	500241	KIRLOSBROS	24-Jan-18
538685	SHEMAROO	23-Jan-18	532400	KPIT	24-Jan-18
532083	SHKALYN	23-Jan-18	530813	KRBL	24-Jan-18
500407	SWARAJENG	23-Jan-18	526596	LIBERTSHOE	24-Jan-18
517385	SYMPHONY	23-Jan-18	540005	LTI	24-Jan-18
539268	SYNGENE	23-Jan-18	532720	M&MFIN	24-Jan-18
531846	TRINITYLEA	23-Jan-18	540749	MASFIN	24-Jan-18
532432	UNITDSPR	23-Jan-18	532892	MOTILALOFS	24-Jan-18
524129	VINYLINDIA	23-Jan-18	526299	MPHASIS	24-Jan-18
530057	VIVANZA	23-Jan-18	531919	MUDITFN	24-Jan-18
523888	VRWODAR	23-Jan-18	531859	ORVENPR	24-Jan-18
533023	WABCOINDIA	23-Jan-18	532742	PAUSHAKLTD	24-Jan-18
530697	ZENLABS	23-Jan-18	500680	PFIZER	24-Jan-18
539151	ARFIN	24-Jan-18	500331	PIDILITIND	24-Jan-18
503960	BBL	24-Jan-18	539978	QUESS	24-Jan-18
532523	BIOCON	24-Jan-18	532497	RADICO	24-Jan-18
532974	BIRLAMONEY	24-Jan-18	540366	RADIOCITY	24-Jan-18
504648	BOMBWIR	24-Jan-18	500330	RAYMOND	24-Jan-18
532483	CANBK	24-Jan-18	502090	SAGCEM	24-Jan-18
532938	CAPF	24-Jan-18	532163	SAREGAMA	24-Jan-18

507514	SDBL	24-Jan-18	519494	NKIND	25-Jan-18
512393	SHARDUL	24-Jan-18	530071	PARSOLI	25-Jan-18
502180	SHREDIGCEM	24-Jan-18	532988	RANEENGINE	25-Jan-18
532795	SITINET	24-Jan-18	517447	RSSOFTWARE	25-Jan-18
530953	SUNILAGR	24-Jan-18	526477	SAENTER	25-Jan-18
532790	TANLA	24-Jan-18	538666	SHARDACROP	25-Jan-18
532262	TCIIND	24-Jan-18	532498	SHRIRAMCIT	25-Jan-18
517506	TTKPRESTIG	24-Jan-18	533121	SQSBFSI	25-Jan-18
514142	TTL	24-Jan-18	516108	STHINPA	25-Jan-18
500231	UMANGDAIR	24-Jan-18	530445	SUMERUIND	25-Jan-18
532401	VIJAYABANK	24-Jan-18	534756	TARAJEWELS	25-Jan-18
511333	VLSFINANCE	24-Jan-18	532301	TATACOFFEE	25-Jan-18
505412	WENDT	24-Jan-18	532410	TRANSCOR	25-Jan-18
512165	ABANSENT	25-Jan-18	504273	TUMUSEL	25-Jan-18
532762	ACE	25-Jan-18	500429	UNIPHOS	25-Jan-18
513149	ACROW	25-Jan-18	512070	UPL	25-Jan-18
532331	AJANTPHARM	25-Jan-18	531234	VICTORYPP	25-Jan-18
531581	ALKADIA	25-Jan-18	507880	VIPIND	25-Jan-18
531252	ANERI	25-Jan-18	512345	YASTF	25-Jan-18
533758	APLAPOLLO	25-Jan-18	532406	AVANTEL	27-Jan-18
539301	ARVSMART	25-Jan-18	500069	BNKCAP	27-Jan-18
508933	AYMSYNTEX	25-Jan-18	532488	DIVISLAB	27-Jan-18
526849	BANARBEADS	25-Jan-18	514358	EVERLON	27-Jan-18
509438	BENARAS	25-Jan-18	531505	INDERGR	27-Jan-18
530803	BHAGIL	25-Jan-18	536709	INDRENEW	27-Jan-18
512301	CHMBBRW	25-Jan-18	500220	JASCH	27-Jan-18
538786	CIL	25-Jan-18	590078	MAITHANALL	27-Jan-18
524506	CORALAB	25-Jan-18	531221	MAYURFL	27-Jan-18
533167	COROENGG	25-Jan-18	538964	MERCURYLAB	27-Jan-18
530067	CSLFINANCE	25-Jan-18	533179	PERSISTENT	27-Jan-18
530393	DBSTOCKBRO	25-Jan-18	526490	PRATIK	27-Jan-18
540376	DMART	25-Jan-18	515127	RAMMA	27-Jan-18
500124	DRREDDY	25-Jan-18	534680	SRGHFL	27-Jan-18
526227	FILATEX	25-Jan-18	511218	SRTRANSFIN	27-Jan-18
540267	FLORACORP	25-Jan-18	533227	AHLEAST	28-Jan-18
540798	FSC	25-Jan-18	526833	ANNTHMS	28-Jan-18
505725	HINDEVER	25-Jan-18	505036	ACGL	29-Jan-18
532612	INDOCO	25-Jan-18	505216	ALFREDHE	29-Jan-18
532286	JINDALSTEL	25-Jan-18	532259	APARINDS	29-Jan-18
506528	KELENRG	25-Jan-18	520119	ASAL	29-Jan-18
507598	KLRF	25-Jan-18	532493	ASTRAMICRO	29-Jan-18
523207	KOKUYOCMLN	25-Jan-18	530999	BALAMINES	29-Jan-18
533519	L&TFH	25-Jan-18	500059	BINANIIND	29-Jan-18
500253	LICHSGFIN	25-Jan-18	532485	BLIL	29-Jan-18
524748	LINKPH	25-Jan-18	524440	CAMEXLTD	29-Jan-18
532500	MARUTI	25-Jan-18	500040	CENTURYTEX	29-Jan-18
530497	MARVEL	25-Jan-18	539681	DAL	29-Jan-18
531727	MENNPIS	25-Jan-18	590031	DENORA	29-Jan-18
523385	NILKAMAL	25-Jan-18	522074	ELGIEQUIP	29-Jan-18

531162	EMAMILTD	29-Jan-18	524723	BIJHANS	30-Jan-18
532737	EMKAY	29-Jan-18	531175	BLSINFOTE	30-Jan-18
500246	ENVAIREL	29-Jan-18	526612	BLUEDART	30-Jan-18
531600	GOGIACAP	29-Jan-18	534804	CARERATING	30-Jan-18
517372	GUJINTRX	29-Jan-18	511243	CHOLAFIN	30-Jan-18
532457	GULPOLY	29-Jan-18	507833	COMPUPN	30-Jan-18
500010	HDFC	29-Jan-18	526269	CRSTCHM	30-Jan-18
500184	HSCL	29-Jan-18	500840	EIHOTEL	30-Jan-18
500187	HSIL	29-Jan-18	532178	ENGINERSIN	30-Jan-18
532659	IDFC	29-Jan-18	523754	EPCIN	30-Jan-18
533047	IMFA	29-Jan-18	531375	GCCLINP	30-Jan-18
532240	INDNIPPON	29-Jan-18	538961	GENUSPAPER	30-Jan-18
506222	INEOSSTYRO	29-Jan-18	511676	GICHSGFIN	30-Jan-18
500458	KORE	29-Jan-18	500174	GLFL	30-Jan-18
540222	LAURUSLABS	29-Jan-18	532424	GODREJCP	30-Jan-18
500252	LAXMIMACH	29-Jan-18	533248	GPPL	30-Jan-18
526179	LUDLOWJUT	29-Jan-18	517288	GUJARATPOLY	30-Jan-18
540768	MAHLOG	29-Jan-18	532425	GULCHEM	30-Jan-18
500266	MAHSCOOTER	29-Jan-18	530055	HRMNYCP	30-Jan-18
506919	MAKERSL	29-Jan-18	505726	IFBIND	30-Jan-18
531319	MARUTISE	29-Jan-18	538835	INTELLECT	30-Jan-18
524654	NATCAPSUQ	29-Jan-18	504786	INVPRECQ	30-Jan-18
513023	NBVENTURES	29-Jan-18	530965	IOC	30-Jan-18
500672	NOVARTIND	29-Jan-18	511208	IVC	30-Jan-18
535754	ORIENTCEM	29-Jan-18	523398	JCHAC	30-Jan-18
532987	RBL	29-Jan-18	517063	JETKINGQ	30-Jan-18
532527	RKFORGE	29-Jan-18	532162	JKPAPER	30-Jan-18
540673	SIS	29-Jan-18	530163	KERALAYUR	30-Jan-18
503811	SIYSIL	29-Jan-18	540680	KIOCL	30-Jan-18
532872	SPARC	29-Jan-18	526409	KKALPANAIND	30-Jan-18
523222	SRMENERGY	29-Jan-18	534690	LAKSHVILAS	30-Jan-18
500405	SUPPETRO	29-Jan-18	500250	LGBBROSLTD	30-Jan-18
531003	SWRNASE	29-Jan-18	501874	MACKINN	30-Jan-18
531173	SYSHEM	29-Jan-18	532313	MAHLIFE	30-Jan-18
532755	TECHM	29-Jan-18	530537	MANRAJH	30-Jan-18
521064	TRIDENT	29-Jan-18	523566	MARBU	30-Jan-18
532156	VAIBHAVGBL	29-Jan-18	530119	NATRAJPR	30-Jan-18
532300	WOCKPHARMA	29-Jan-18	532504	NAVINFLUOR	30-Jan-18
532056	ADIEXRE	30-Jan-18	524774	NGLFINE	30-Jan-18
511359	ADMANUM	30-Jan-18	532391	OPTOCIRCUI	30-Jan-18
517552	ADVNCMIC	30-Jan-18	530365	ORIENTBELL	30-Jan-18
533271	ASHOKA	30-Jan-18	514460	OSWAYRN	30-Jan-18
500028	ATVPR	30-Jan-18	531870	POPULARES	30-Jan-18
540611	AUBANK	30-Jan-18	540719	SBILIFE	30-Jan-18
539251	BALKRISHNA	30-Jan-18	507894	SCHABLON	30-Jan-18
500049	BEL	30-Jan-18	532900	SEINV	30-Jan-18
531340	BERVINL	30-Jan-18	540425	SHANKARA	30-Jan-18
533228	BHARATFIN	30-Jan-18	530565	SSLFINANCE	30-Jan-18

Earning Estimate Q3FY18

BSE CODE	NSE CODE	Sales Rs Cr	Sales YoY	Pat Rs Cr	PAT YoY
20-Jan-18	GRUH	178	17.40	82	28.10
22-Jan-18	ASIANPAINT	4724	20.00	578	23.90
22-Jan-18	AXISBANK	4649	7.30	794	37.00
22-Jan-18	DHFL	624	21.20	300	22.70
22-Jan-18	HAVELLS	2029	34.70	178	56.40
23-Jan-18	PNBHOUSING	417	57.80	221	60.30
23-Jan-18	CROMPTON	1268	9.30	26	(65.90)
23-Jan-18	IBULHSGFIN	1293	35.70	909	21.00
23-Jan-18	MCDOWELL-N	2494	0.00	192	22.00
23-Jan-18	RBLBANK	447	39.00	183	42.50
24-Jan-18	RADIOCITY	76	4.70	14	17.00
24-Jan-18	BIOCON	1051	2.10	101	(41.00)
24-Jan-18	CANBK	2844	17.80	256	(20.40)
24-Jan-18	CAPF	501	50.20	86	39.40
24-Jan-18	CONCOR	1484	11.50	248	33.60
24-Jan-18	IDEA	6630	(23.50)	(1391)	Loss
24-Jan-18	INDIGO	6042	21.20	652	33.80
24-Jan-18	KPIT	913	9.90	50	5.40
24-Jan-18	LTI	1808	8.50	268	8.00
24-Jan-18	M&MFIN	999	33.90	250	LP
24-Jan-18	MPHASIS	1630	6.10	201	(1.70)
24-Jan-18	PIDILITIND	1521	14.00	223	10.30
24-Jan-18	QUESS	1440	40.30	50	62.10
24-Jan-18	SITICABLE	372	24.50	(19)	Loss
24-Jan-18	TTKPRESTIG	938	15.20	19	68.70
25-Jan-18	L&TFH	1144	22.50	381	40.70
25-Jan-18	AJANTPHARM	526	(1.30)	116	(18.70)
25-Jan-18	DMART	4241	27.00	236	55.60
25-Jan-18	DRREDDY	3664	(1.20)	341	(27.50)
25-Jan-18	JINDALSTEL	6144	10.10	(593)	Loss
25-Jan-18	LICHSGFIN	924	1.00	517	3.60
25-Jan-18	MARUTI	19260	14.20	2031	16.40
25-Jan-18	SHRIRAMCIT	901	18.10	203	28.90
27-Jan-18	DIVISLAB	989	3.00	233	(13.30)
27-Jan-18	PERSISTENT	790	5.90	86	5.30
27-Jan-18	SRTRANSFIN	1688	19.60	504	45.80

Result Q3FY18

BSE CODE	NSE CODE	Sales Rs Cr	Sales YoY	Pat Rs Cr	PAT YoY
532734	GPIL	672	57.60	74	(791.26)
511288	GRUH	428	12.33	82	28.29
500186	HINDOILEXP	13	143.35	13	207.89
539542	LUXIND	298	29.17	18	28.59
506197	BLISSGVS	195	(16.02)	24	26.32
511431	VAKRANGEE	1802	84.13	247	87.50

500325	RELIANCE	99810	25.69	9445	25.53
500243	KIRLOSIND	1	64.15	2	(59.44)
520021	OMAXAUTO	306	20.88	12	(506.51)
521018	MARALOVER	183	7.92	(2)	(168.01)
500110	CHENNPETRO	8587	18.17	386	32.68
531950	VERTEX	2	1.19	0	(58.33)
532532	JPASSOCIAT	1109	(27.20)	(148)	(86.48)
540133	ICICIPRULI	6795	19.26	452	0.46
540124	GNA	167	40.87	13	55.77
513179	NATNLSTEEL	1029	6.68	6	45.58
526899	HIMIN	32	16.45	3	274.03
533029	ALKALI	15	(0.26)	0	(51.69)
512455	LLOYDMETAL	116	0.65	2	265.12
539332	NAVKARCORP	106	16.22	24	21.33
511072	DHFL	2632	11.43	306	24.99
517354	HAVELLS	1965	30.48	194	26.82
532543	SAHPETRO	198	55.42	6	71.01
500670	GNFC	1591	39.87	39	(41.55)
532812	TFL	2	(41.62)	(1)	4200.00
533029	ALKALI	15	(0.26)	0	(51.69)
507649	RASOI	5	(5.77)	(0)	(134.14)
532953	VGUARD	524	13.91	36	27.90
500820	ASIANPAINT	3587	(8.89)	528	7.91
532440	MPSLTD	68	(15.16)	18	2.09
500355	RALLIS	390	17.70	25	(1.58)
504966	TINPLATE	502	466.64	13	185.91
532893	VTMLTD	42	9.22	2	63.16

Economic Calendar

Country	Monday 22th Jan 18	Tuesday 23th Jan 18	Wednesday 24th Jan 18	Thursday 25th Jan 18	Friday 26th Jan 18
US		Philly Fed Manufacturing Index , Flash Manufacturing PMI , Flash Services PMI , Richmond Manufacturing Index	HPI m/m , Existing Home Sales , Crude Oil Inventories	Goods Trade Balance,Prelim Wholesale Inventories m/m , New Home Sales, CB Leading Index m/m , Natural Gas Storage	Advance GDP q/q , Core Durable Goods Orders m/m , Advance GDP Price Index q/q , Durable Goods Orders m/m , Revised UoM Consumer Sentiment , Revised UoM Inflation Expectations
UK/EURO ZONE	German Buba Monthly Report ,Consumer Confidence,	French Flash Manufacturing PMI , French Flash Services PMI , German Flash Manufacturing PMI , German Flash Services PMI , Flash Manufacturing PMI , Flash Services PMI , Public Sector Net Borrowing ,GfK Consumer Confidence	Average Earnings Index 3m/y , Claimant Count Change , Unemployment Rate	Italian 10-y Bond Auction , CBI Realized Sales , Minimum Bid Rate , ECB Press Conference	Spanish Flash GDP q/q , Spanish Unemployment Rate , Prelim GDP q/q , High Street Lending , Index of Services 3m/3m , Italian Prelim CPI m/m
INDIA					



Narnolia Securities Ltd

201 | 2nd Floor | Marble Arch Building | 236B-AJC Bose
Road | Kolkata-700 020 , Ph : 033-40501500

email: narnolia@narnolia.com,
website : www.narnolia.com

Risk Disclosure & Disclaimer: This report/message is for the personal information of the authorized recipient and does not construe to be any investment, legal or taxation advice to you. Narnolia Securities Ltd. (Hereinafter referred as NSL) is not soliciting any action based upon it. This report/message is not for public distribution and has been furnished to you solely for your information and should not be reproduced or redistributed to any other person in any form. The report/message is based upon publicly available information, findings of our research wing "East wind" & information that we consider reliable, but we do not represent that it is accurate or complete and we do not provide any express or implied warranty of any kind, and also these are subject to change without notice. The recipients of this report should rely on their own investigations, should use their own judgment for taking any investment decisions keeping in mind that past performance is not necessarily a guide to future performance & that the the value of any investment or income are subject to market and other risks. Further it will be safe to assume that NSL and /or its Group or associate Companies, their Directors, affiliates and/or employees may have interests/ positions, financial or otherwise, individually or otherwise in the recommended/mentioned securities/mutual funds/ model funds and other investment products which may be added or disposed including & other mentioned in this report/message.