

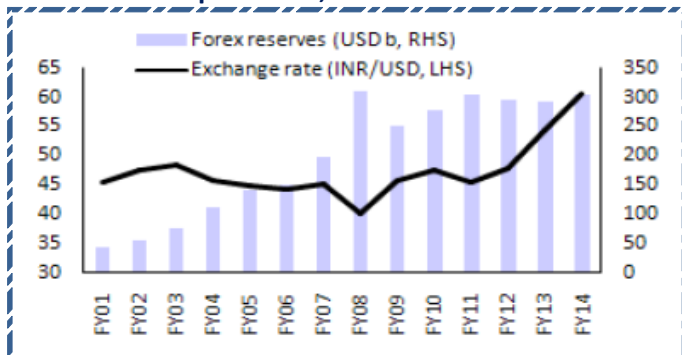
Quote of the Day

" The market does reflect the available information, as the professors tell us. But just as the funhouse mirrors don't always accurately reflect your weight, the markets don't always accurately reflect that information. Usually they are too pessimistic when it's bad and too optimistic when it's good." **Bill Miller**

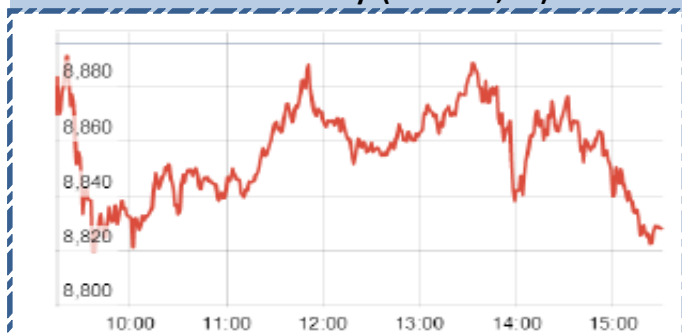
SGX NIFTY : 8852 (9 Pt Up)

Chart of the Day

INR Depreciated , Forex Reserve Trend



Index Action-Nifty (20th Feb, 15)



MARKET		
Name	Value	Change
Sensex	29231.41	(230.86)
Nifty	8833.6	(61.70)
DOW	18029.85	(17.73)
NASDAQ	4955.97	31.27
CAC	4830.9	(2.38)
DAX	11056.64	48.70
FTSE	6915.2	26.30
NIKIE	18496.1	163.80
HANG SENG	24720.09	(111.99)
EW ALL SHARE	14835.54	(55.14)

INSTITUTIONAL TURNOVER

FII			
Investor	Buy(Cr.)	Sale(Cr.)	Net(Cr.)
20th Feb	3319.02	3,408.43	(89.41)
Feb,15	63977.61	63,930.44	47.17
2015	169128.82	1,58,475.41	10653.41
DII			
Investor	Buy(Cr.)	Sale(Cr.)	Net(Cr.)
20th Feb	1722.37	1,517.52	204.85
Feb,15	26316.76	23,421.49	2895.27
2015	61630.41	66,616.91	(4986.50)

COMMODITY PRICE

COMMODITY/CURRENCIES	Value	
GOLD	26277.00	↑
SILVER	36314.00	↓
CRUDEOIL	52.29	↓
COPPER	356.80	↓
NATURALGAS	184.00	↑
DOLLAR/RS.	62.22	↓
EURO/RS.	70.74	↑
POUND/RS.	95.56	↓

Index

Contents	Page	Coverage
News	2	UPDATE
Economic Calendar	3	UPDATE

Narnolia Securities Ltd.

Markets Snapshot

Top Price Performers

Top Performers 1D	% Change	Top Performers 1W	% Change	Top Performers 1M	% Change
TWL	20.00	STEERINTER	76.23	ISFT	90.57
RMMIL	19.85	PETRONENGG	62.47	TWL	87.82
MODILUFT	19.80	KGL	61.60	NTCIND	77.43
INTLCONV	19.63	MUKTAARTS	53.35	PIPAVAVDOC	74.09
ITDCEM	18.72	MOSERBAER	53.17	STEERINTER	73.10

Worst Price Performers

Worst Performers 1D	% Change	Worst Performers 1W	% Change	Worst Performers 1M	% Change
SCANPGEOM	(16.16)	SCANPGEOM	(31.02)	FARMAXIND	(47.95)
ABGSHIP	(12.92)	SAMTEL	(29.73)	PRITHVI	(47.51)
GLOBALCA	(10.61)	ALMONDZ	(26.27)	STRAUSIND	(39.69)
GEMINI	(10.32)	ADSL	(22.15)	SVCRES	(35.95)
SUBHKAM	(9.92)	STRAUSIND	(21.78)	YBRANTDIGI	(33.81)

Top News :

- RCF Mgt Guideline** : Oil Ministry has moved a proposal to pool or average out prices of domestic natural gas and imported LNG used by fertilizer plants . The new policy is likely to come into effect from April 1, 2015. If the entire gas is pooled, it will be good for the existing plants and also the new plants coming up because then the gas price will become more affordable. Company said gas prices will go up by USD 2-3/mmBtu post gas-pooling. Cost of gas may go up by Rs 750-1000 crore. The ministry has proposed that the custom duty on imported liquefied natural gas . Company think around 5 percent is the custom duty on LNG and definitely to that extent, depending on the LNG price maybe USD 0.5 or USD 1 per mmbtu, the price may come down. Roughly around Rs 1,000 crore or Rs 1,500 crore cost may come down for the imported LNG .

- McLeod Russel Mgt Guideline** : This is the first time in the last 10-15 years that company lost 7 million kg of our own crop till November-December. The price increase is only Rs 6-7 which is not good enough. So this year had a negative impact from Q1. Quarter four which is non-seasonal quarter . The prices did not go up because of overall export during the year has been much lower because of price drop in african market . Company had seen a price increase of around 15-20 percent for the African operations and there is also a report of a dry weather condition in Kenya in the last 15-20 days. So, putting these two factors together company will see recovery in prices in international market, good prices, opening prices in Indian markets and recovery of crop.

- DLF Mgt Guideline** : Company is confident of crossing at least the lower-end of their annual pre-sales sales target of Rs 3000 crore by FY15-end. Sales in luxury product have started picking up and expects a pre-sales of Rs 1,100 crore in fourth quarter from Crest and Camelia.

- UltraTech Cement** has won the auction conducted for the Coal Block at Bicharpur, situated in Madhya Pradesh. Its bid of Rs.3,003/- per MT was the highest. A formal communication vesting the said coal block in the Company s favour is expected in due course. Commercial production is expected to commence from FY 2018.

- Competition Commission of India (CCI)** has approved the proposed combination in the nature of merger of ING Vysya Bank Ltd with Kotak Mahindra Bank Ltd

- Fund Action** : eClerx Services : Ironwood Investment Holdings sold 4,94,341 shares of eClerx Services at Rs 1,300.92 on the NSE . ABG Shipyard : The Ratnakar Bank Ltd. sold 3,54,217 shares of ABG Shipyard at Rs 203.45 on the NSE.

- U.S. Manufacturing Purchasing Managers Index** rose to 54.3 in February, up from the January's final reading of 53.9. Economists polled by Reuters had expected a 53.6 reading.

- U.K. Office for National Statistics** said that retail sales fell to -0.3%, from 0.2% in the preceding month whose figure was revised down from 0.4%. Analysts had expected retail sales to fall -0.2% last month.

- Euro zone finance ministers** agreed in principle on Friday to extend Greece's financial rescue by four months, averting a potential cash crunch in March that could have forced the country out of the currency area.

- Mexican GDP** rose to a seasonally adjusted 2.6%, from 2.2% in the preceding quarter. Analysts had expected Mexican GDP to rise to 2.6% in the last quarter.

Result Calendar Q3FY15

Bse Coade	Company Name	Date	Bse Coade	Company Name	Date
590031	DENORA	19-Feb-15	500870	CASTROLIND	25-Feb-15
504959	STOVACQ	19-Feb-15	523888	VRWODAR	27-Feb-15
500249	KSBPUMPS	20-Feb-15	500166	GOODRICKE	28-Feb-15
500674	SANOFI	20-Feb-15	511626	RRFIN	14-Dec-15
520113	VESUVIUS	24-Feb-15			

Economic Calendar

	Monday 23-Feb-15	Tuesday 24-Feb-15	Wednesday 25-Feb-15	Thursday 26-Feb-15	Friday 27-Feb-15	Saturday 28-Feb-15
US	Existing Home Sales , Flash Services PMI .	CB Consumer Confidence , Richmond Manufacturing Index .	Crude Oil Inventories .	CPI m/m , Core CPI m/m ,Core Durable Goods Orders m/m ,Unemployment Claims , Durable Goods Orders m/m , HPI m/m ,Natural Gas Storage .	Prelim GDP q/q , Chicago PMI , Pending Home Sales m/m , Revised UoM Consumer Sentiment .	
UK/EURO ZONE	German Ifo Business Climate , CBI Realized Sales .	EU Economic Forecasts , Final CPI y/y .	GfK German Consumer Climate ,BBA Mortgage Approvals	Nationwide HPI m/m , German Prelim CPI m/m , German Unemployment Change , M3 Money Supply y/y , Private Loans y/y, Targeted LTRO	Second Estimate GDP q/q , Prelim Business Investment q/q , Index of Services 3m/3m .	
INDIA				Railway Budget FY15-16	Economic Survey	Union Budget FY15-16



Narnolia Securities Ltd

124, 1st floor 7/ 1, Lords Sinha Road Kolkata 700071, Ph 033-22821251 Toll Free no : 1-800-345-4000

email: research@narnolia.com,

website : www.narnolia.com

Risk Disclosure & Disclaimer: This report/message is for the personal information of the authorized recipient and does not construe to be any investment, legal or taxation advice to you. Narnolia Securities Ltd. (Hereinafter referred as NSL) is not soliciting any action based upon it. This report/message is not for public distribution and has been furnished to you solely for your information and should not be reproduced or redistributed to any other person in any form. The report/message is based upon publicly available information, findings of our research wing "East wind" & information that we consider reliable, but we do not represent that it is accurate or complete and we do not provide any express or implied warranty of any kind, and also these are subject to change without notice. The recipients of this report should rely on their own investigations, should use their own judgment for taking any investment decisions keeping in mind that past performance is not necessarily a guide to future performance & that the the value of any investment or income are subject to market and other risks. Further it will be safe to assume that NSL and /or its Group or associate Companies, their Directors, affiliates and/or employees may have interests/ positions, financial or otherwise, individually or otherwise in the recommended/mentioned securities/mutual funds/ model funds and other investment products which may be added or disposed including & other mentioned in this report/message.