

SGX NIFTY : 7239 ( 3 Pt Up)

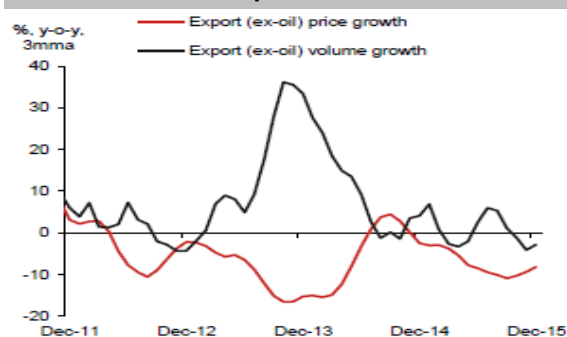
**Quote of the Day**

"If you understood a business perfectly and the future of the business, you would need very little in the way of a margin of safety. So, the more vulnerable the business is, assuming you still want to invest in it, the larger margin of safety you'd need. If you're driving a truck across a bridge that says it holds 10,000 pounds and you've got a 9,800 pound vehicle, if the bridge is 6 inches above the crevice it covers, you may feel okay, but if it's over the Grand Canyon, you may feel you want a little larger margin of safety."

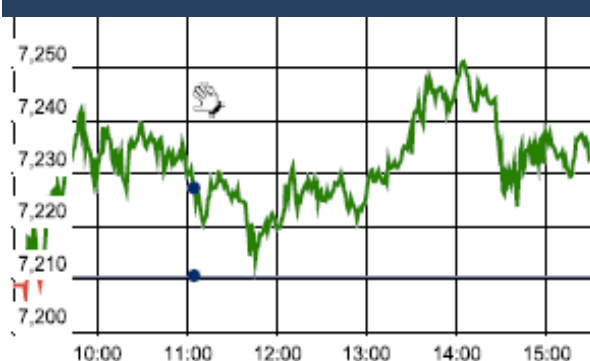
Warren Buffett

**Chart of the Day**

**Export Trend**



**Index Action Nifty ( 22th Feb 16 )**



**Index**

Contents	Page	Coverage
News	2	Update
Economic Calendar	3	Update

**Market**

Name	Value	Change
Sensex	23,788.79	79.64
Nifty	7234.55	23.80
DOW	16,391.00	-21.44
NASDAQ	4,570.61	66.18
CAC	4,298.70	75.66
DAX	9,573.59	185.54
FTSE	6,037.73	87.50
NIKKEI	16,126.44	15.39
HANG SENG	19,415.86	(47.23)
EW ALL SHARE	12531.74	65.16

**Instituional Turnover**

**FII**

Investor	Buy(Cr.)	Sale(Cr.)	Net(Cr.)
19-Feb-16	2617.38	3274.31	(656.93)
Feb,16	65859.26	80786.97	(14927.71)
2016	65859.26	80786.97	(14927.71)

**DII**

Investor	Buy(Cr.)	Sale(Cr.)	Net(Cr.)
19-Feb-16	1377.85	779.98	597.87
Feb,16	39582.86	26725.19	12857.67
2016	39582.86	26725.19	12857.67

**Commodity Price**

Commodity/Currencies	Value	
GOLD	28970.00	↓
SILVER	36970.00	↓
CRUDEOIL	32.16	↑
COPPER	321.00	↑
NATURALGAS	124.30	↑
DOLLAR/RS.	68.60	↑
EURO/RS.	75.73	↑
POUND/RS.	96.89	↓

## Market Snapshot

### Top Price Performers

Top Performers 1D	% Change	Top Performers 1W	% Change	Top Performers 1M	% Change
INDTODE	19.99	RAMKY	53.77	NDTV	59.81
ANDHRAPET	19.98	RUSHIL	34.62	LLOYDMETAL	58.74
BFINVEST	19.94	LLOYDMETAL	24.57	RAMKY	47.38
BFINVEST	19.94	VALECHAENG	23.56	INFODRIVE	39.02
FACT	18.23	ASHAPURMIN	21.67	RUSHIL	34.93

Worst Performers 1D	% Change	Worst Performers 1W	% Change	Worst Performers 1M	% Change
RESTILE	(9.83)	SUPREMEINF	(23.67)	PDUMJEPULP	(62.24)
ALMONDZ	(8.50)	GEMINI	(21.29)	AMTEKINDIA	(46.46)
SURAJLTD	(7.04)	SPECTACLE	(20.63)	AFL	(42.98)
BATLIBOI	(6.82)	BIRLACOT	(20.00)	PARLESOFT	(40.02)
LPDC	(6.76)	PDPL	(18.42)	TREEHOUSE	(38.80)

## Top News

- **Syngene International**, the contract research arm of biotechnology major Biocon, is looking to invest USD 200 million (over Rs 1,370 crore) over the next two years to expand capacity and upgrade manufacturing facilities. Capex of USD 200 million (is) envisaged over FY16 to FY18. The capex would be used towards capacity expansions, capability additions and technology upgradations

- **Maruti Suzuki** India's two plants in Gurgaon and Manesar as supplies of components continue to be hit by the agitation of Jats demanding job reservation. The two plants put together roll out some 5,000 units of vehicles a day. The company temporarily halted production at the two plants on Saturday due to Jat agitation in Haryana.

- **Blue Star** plans to invest Rs 215 crore in the next 3-4 years to increase its overall production capacity to a million units per year. The company is in the process of setting up two major facilities, which would redesign and augment its manufacturing footprint. The plant at Sri City is proposed to be built on an area of around 20 acres, while the Samba factory is to be constructed on over 24 acres,

- **Thermax Ltd** has bagged an order worth Rs 353 crore from Rashtriya Chemicals and Fertilizers Ltd (RCF) to execute an energy efficient improvement project. The company will commission a 50 mw gas-based co-generation plant at RCF's facility in Thal, Maharashtra for captive power

- **National Fertilisers Ltd (NFL)** said that the "board of directors of the company accorded in principle approval for equity participation of 11 percent in the revival of Sindri Unit of FCIL (Fertiliser Corporation of India Ltd)".

- **L&T Infrastructure Debt Fund** plans to raise Rs 400 crore through issue of non-convertible bonds. The company intends to issue secured, redeemable, non-convertible bonds of the face value of Rs 25 lakh each, amounting to Rs 300 crore.

- **Government** is set to sell five percent stake in NTPC via offer-for-sale (OFS) on Tuesday. It hopes to garner around Rs 5000 crore. The floor price for the offer shall be Rs 122 per equity share. NTPC is the first company to hit the markets under the revised offer for sale (OFS) guidelines of market regulator Sebi. The OFS route has now been spread over two days.

- **Divis Laboratories Ltd** has had a successful inspection by the US-FDA for its Unit-2 at Chippada, Bheemunipatnam near Visakhapatnam during February, 2016 with no observations.

- **Flash Euro Zone Composite Output Index, which measures the combined output of both the manufacturing and service sectors** dropped from 53.6 in January to 53.0 in February, a 13-month low and below forecasts for 53.3.

- **Euro zone consumer confidence** fell to an annual rate of -8.8, from -6.3 in the preceding month. Analysts had expected Euro zone consumer confidence to fall -6.7 last month

- **Italian CPI** fell to -0.2%, from -0.2% in the preceding month. Analysts had expected Italian CPI to fall -0.2% last month.

- **Federal Statistical Office said that Swiss PPI** fell to a seasonally adjusted -0.4%, from -0.4% in the preceding month. Analysts had expected Swiss PPI to fall -0.2% last month.

- **Canada said that retail sales** fell to -2.2%, from 1.7% in the preceding month. Analysts had expected retail sales to fall -0.6% last month.

- **Canadian manufacturing sales** rose to a seasonally adjusted 1.2%, from 1.0% in the preceding month. Analysts had expected Canadian manufacturing sales to rise 0.7% last month.

### Economic Calendar

Country	Monday 22th Feb 16	Tuesday 23th Feb 16	Wednesday 24th Feb 16	Thursday 25th Feb 16	Friday 26th Feb 16
<b>US</b>	Flash Manufacturing PMI.	S&P/CS Composite-20 HPI y/y , CB Consumer Confidence , Existing Home Sales .	New Home Sales , Crude Oil Inventories.	Core Durable Goods Orders m/m , Unemployment Claims , Durable Goods Orders m/m , HPI m/m , Natural Gas Storage.	Prelim GDP q/q , Core PCE Price Index m/m , Goods Trade Balance , Personal Spending m/m .
<b>UK/EURO ZONE</b>	French Flash Manufacturing PMI ,French Flash Services PMI , German Flash Manufacturing PMI , German Flash Services PMI , Flash Manufacturing PMI, Retail Sales m/m, Public Sector Net Borrowing.	German Ifo Business Climate , Inflation Report Hearings , BBA Mortgage Approvals , 10-y Bond Auction.	Belgian NBB Business Climate , CBI Realized Sales.	German Unemployment Change , M3 Money Supply y/y , Private Loans y/y , Second Estimate GDP q/q , Prelim Business Investment q/q , Index of Services 3m/3m , Final CPI y/y.	German Prelim CPI m/m , French Consumer Spending m/m , French Prelim CPI m/m , Spanish Flash CPI y/y .
<b>INDIA</b>					

**Narnolia Research Lab**

Stellar IT Park | 5th Floor | Office Space No. 6 | Tower-IIInd Plot No. C-25 | Sector-62 | Noida | Ph : 0120-4215110

**Central Strategy Desk - Kolkata**

124 | 1st Floor | 7/1 Lords Sinha Road | Kolkata - 71  
Ph : 033-22821500 | M : 93347 14418, 98302 69810