

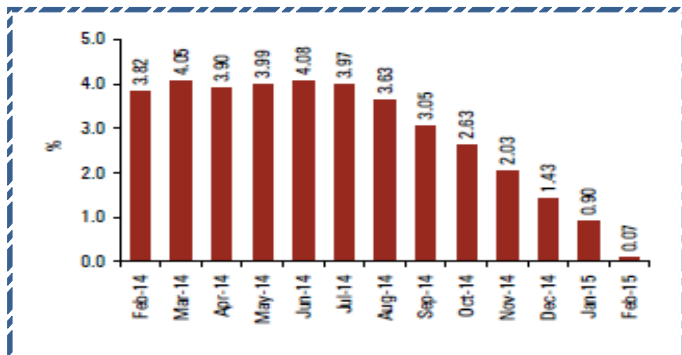
Quote of the Day

"Never adopt permanently any type of asset or any selection method. Try to stay flexible, open-minded, and skeptical." **John Templeton**

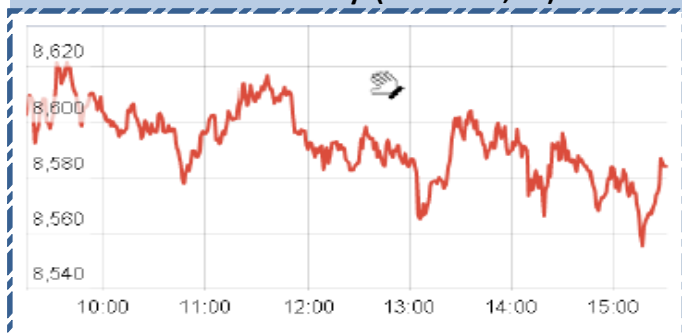
SGX NIFTY : 8614 (1.5 Pt Up)

Chart of the Day

Core CPI Trend



Index Action-Nifty (20th Mar, 15)



Index

Contents	Page	Coverage
News	2	UPDATE
Economic Calendar	3	UPDATE

MARKET

Name	Value	Change
Sensex	28261.08	(208.56)
Nifty	8570.9	(63.75)
DOW	18127.68	168.62
NASDAQ	5026.42	34.04
CAC	5087.49	50.31
DAX	12039.97	139.97
FTSE	7022.51	60.91
NIKIE	1973853	178.51
HANG SENG	24465.54	90.30
EW ALL SHARE	14520.87	(208.03)

INSTITUTIONAL TURNOVER

FII			
Investor	Buy(Cr.)	Sale(Cr.)	Net(Cr.)
20th Mar	7550.83	7,196.24	354.59
Mar,15	76829.38	71,491.15	5338.23
2015	280605.11	2,57,914.94	22690.17
DII			
Investor	Buy(Cr.)	Sale(Cr.)	Net(Cr.)
20th Mar	1577.79	1,796.99	(219.20)
Mar,15	24282.50	26,253.73	(1971.23)
2015	98068.89	1,06,209.57	(8140.68)

COMMODITY PRICE

COMMODITY/CURRENCIES	Value	
GOLD	26182.00	↑
SILVER	37789.00	↑
CRUDEOIL	45.94	↓
COPPER	382.25	↑
NATURALGAS	174.70	↓
DOLLAR/RS.	62.46	↓
EURO/RS.	67.41	↓
POUND/RS.	93.22	↓

Narnolia Securities Ltd.

Markets Snapshot

Top Price Performers

Top Performers 1D	% Change	Top Performers 1W	% Change	Top Performers 1M	% Change
ESL	19.78	KIRIINDUS	54.38	WESTE	55.32
KIRIINDUS	16.77	DIAPOWER	38.34	SATRAPROP	57.30
ISIBARS	16.07	MUDRA	32.77	WANBURY	60.49
CALSREF	12.50	EUROCERA	27.24	LOGIXMICRO	63.79
ESSARPORTS	12.49	ABGHEAVY	27.19	EUROCERA	67.86

Worst Price Performers

Worst Performers 1D	% Change	Worst Performers 1W	% Change	Worst Performers 1M	% Change
KANANIIND	(19.70)	ZYLOG	(29.34)	GEMINI	(48.57)
ORIENTCONT	(15.40)	CURATECH	(29.29)	ZYLOG	(41.20)
SPARC	(14.09)	GSS	(28.80)	ESSDEE	(40.41)
JINDCOT	(12.36)	GEMINI	(26.53)	EDUCOMP	(38.91)
SINCLAIR	(12.34)	TWL	(26.32)	KGIND	(38.75)

Top News :

- **Bosch Ltd** has informed that the Labour Union of the Company's Jaipur plant has called for a 'one day strike' on March 20, 2015 in connection with the ongoing wage settlement. The wage negotiations have been going on since last 20 months. Labour Commissioner and Joint Labour Commissioner had convened multiple conciliatory meetings between the Company management and members of Labour Union.

- **UPL Limited** increases its stake in UPL DO BRASIL INDUSTRIA E COMERCIO DE INSUMOS AGROPECUARIOS S.A. UPL has, through its step down wholly owned subsidiary, increased its stake in UPL do Brazil Industria E Comercio de Insumos Agropecuarios S.A., a Brazilian Company, from 73 percent to 100 percent by acquiring the balance 27 percent shares from its existing shareholders.

- **Edelweiss Financial Services Ltd** has informed that CRISIL Limited, has assigned the rating of 'CRISIL A1+' (CRISIL A one plus) to the proposed issue of Short Term Debt Issue of Rs. 15 billion of the Company.

- **Gateway Distriparks Ltd** has informed that the Customs permission for Custodianship at the Container Freight Station (CFS) at Chennai of the subsidiary Company, Chandra CFS & Terminal Operators Private Limited was temporarily suspended by Customs Dept., Chennai, until further orders.

- **The sanction to the Company by State Bank of India**, Backbay Reclamation Branch, Nariman Point, Mumbai of, inter-alia, the facility of an Export Performance Bank Guarantee (EPBG) of up to USD 1633.33 million equivalent to about Rs. 9800 crores, In this regard, Alok Industries Ltd has informed that out of the aforesaid total advance and in addition to the USD 250 million received on January 13, 2015, an additional Advance amounting to USD 125 million was received on February 05, 2015 and USD 40 million has been received on March 20, 2015 by the Company's Authorised Dealer on the Company's behalf. The Company expect a further advance of USD 60 million to come in next week thus taking the total advance received to USD 475 million.

- **Mahindra First Choice Wheels** has signed a definitive agreement to raise USD 15 million from San Francisco based investment advisor firm, Valiant Capital for a minority stake for the company.

- **Instituto Nacional De Estadistic y Censos** said that Argentinian GDP rose to 0.4%, from -0.8% in the preceding month. Analysts had expected Argentinian GDP to rise to 0.3% last month.

- **National Statistics Office** said that U.K. Public Sector Net Borrowing rose to a seasonally adjusted 6.22B, from -8.93B in the preceding quarter whose figure was revised up from -9.41B. Analysts had expected U.K. Public Sector Net Borrowing to rise to 7.70B in the last quarter.

- **European Central Bank** said that Euro zone current account rose to a seasonally adjusted 29.4B, from 22.5B in the preceding month whose figure was revised up from 17.8B. Analysts had expected Euro zone current account to rise to 21.3B last month.

- **Statistics Canada** said that **Canadian consumer price inflation** rose to a seasonally adjusted 0.9%, from -0.2% in the preceding month. Analysts had expected Canadian consumer price inflation to rise 0.7% last month.

Economic Calendar

	Monday 23-Mar-15	Tuesday 24-Mar-15	Wednesday 25-Mar-15	Thursday 26-Mar-15	Friday 27-Mar-15
US	Existing Home Sales , Flash Services PMI .	CPI m/m , Core CPI m/m , CB Consumer Confidence , New Home Sales , Richmond Manufacturing Index .	Core Durable Goods Orders m/m , Durable Goods Orders m/m , Crude Oil Inventories .	Unemployment Claims , Natural Gas Storage .	Final GDP q/q , Final GDP Price Index q/q , Revised UoM Consumer Sentiment , Revised UoM Inflation Expectations .
UK/EURO ZONE	Consumer Confidence	German Ifo Business Climate , CPI y/y , PPI Input m/m , RPI y/y , CBI Realized Sales .	GfK German Consumer Climate , BBA Mortgage Approvals , FPC Statement .	M3 Money Supply y/y , Private Loans y/y , Retail Sales m/m .	French Consumer Spending m/m , Spanish Flash CPI y/y , Italian Retail Sales m/m .
INDIA					



Narnolia Securities Ltd

124, 1st floor 7/ 1, Lords Sinha Road Kolkata 700071, Ph 033-22821251 Toll Free no : 1-800-345-4000

email: research@narnolia.com,

website : www.narnolia.com

Risk Disclosure & Disclaimer: This report/message is for the personal information of the authorized recipient and does not construe to be any investment, legal or taxation advice to you. Narnolia Securities Ltd. (Hereinafter referred as NSL) is not soliciting any action based upon it. This report/message is not for public distribution and has been furnished to you solely for your information and should not be reproduced or redistributed to any other person in any form. The report/message is based upon publicly available information, findings of our research wing "East wind" & information that we consider reliable, but we do not represent that it is accurate or complete and we do not provide any express or implied warranty of any kind, and also these are subject to change without notice. The recipients of this report should rely on their own investigations, should use their own judgment for taking any investment decisions keeping in mind that past performance is not necessarily a guide to future performance & that the the value of any investment or income are subject to market and other risks. Further it will be safe to assume that NSL and /or its Group or associate Companies, their Directors, affiliates and/or employees may have interests/ positions, financial or otherwise, individually or otherwise in the recommended/mentioned securities/mutual funds/ model funds and other investment products which may be added or disposed including & other mentioned in this report/message.