

SGX NIFTY : 7735 (11.50 Pt Up)

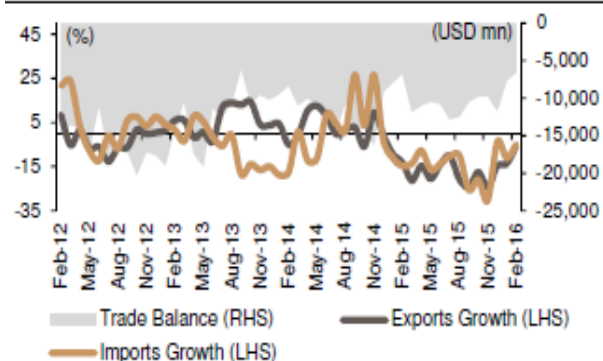
Quote of the Day

"Making an investment decision is like formulating a scientific hypothesis and submitting it to a practical test. The main difference is that the hypothesis that underlies an investment decision is intended to make money and not to establish a universally valid generalization."

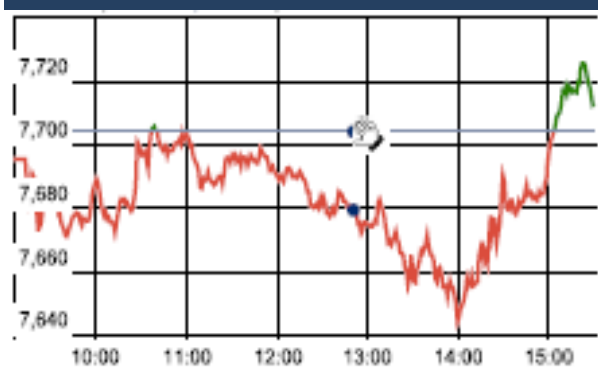
George Soros

Chart of the Day

Trade Deficit %



Index Action Nifty (22th Mar 16)



Index

Contents	Page	Coverage
News	2	Update
Economic Calendar	3	Update

Market

Name	Value	Change
Sensex	25,330.49	45.12
Nifty	7714.90	10.65
DOW	17,602.30	120.81
NASDAQ	4,821.66	12.79
CAC	4,431.79	4.17
DAX	9,990.00	41.36
FTSE	6,192.74	8.16
NIKKIE	17,068.89	20.34
HANG SENG	20,668.98	(2.77)
EW ALL SHARE	13244.51	37.08

Instituional Turnover

FII

Investor	Buy(Cr.)	Sale(Cr.)	Net(Cr.)
22-Mar-16	4945.28	3849.84	1095.44
Mar,16	77057.77	61888.65	15169.12
2016	220195.23	231238.31	(11043.08)

DII

Investor	Buy(Cr.)	Sale(Cr.)	Net(Cr.)
22-Mar-16	1167.84	2098.21	(930.37)
Mar,16	21356.30	30887.02	(9530.72)
2016	103271.27	88351.22	14920.05

Commodity Price

Commodity/Currencies	Value	
GOLD	29051.00	↑
SILVER	37875.00	↑
CRUDEOIL	41.20	↑
COPPER	339.40	↓
NATURALGAS	123.50	↓
DOLLAR/RS.	66.71	↑
EURO/RS.	74.85	↓
POUND/RS.	94.85	↑

Market Snapshot

Top Price Performers

Top Performers 1D	% Change	Top Performers 1W	% Change	Top Performers 1M	% Change
GRAVITA	20.00	WEBELSOLAR	53.39	DWARKESH	83.96
SUPREMEINF	19.02	THIRUSUGAR	35.94	RAJSREESUG	76.21
CALSREF	16.67	SANWARIA	35.06	PRAKASHCON	76.07
INFODRIVE	15.00	ABGSHIP	33.55	PARRYSUGAR	72.44
NEULANLAB	13.54	DHARSUGAR	27.39	OUHSUG	72.27

Worst Performers 1D	% Change	Worst Performers 1W	% Change	Worst Performers 1M	% Change
PRADIP	(9.40)	YBRANTDIGI	(19.75)	SHRENUJ	(42.27)
THANGAMAYL	(8.95)	SHRENUJ	(19.06)	RUSHIL	(39.60)
SAHARAHOUS	(8.92)	SANCIA	(16.48)	SURANACORP	(31.95)
SHREEKRPOL	(7.69)	FARMAXIND	(14.29)	INDINFO	(28.57)
SEZAL	(7.41)	SURANACORP	(14.18)	TRICOM	(28.00)

Top News

- **Bajaj Finance** is entering the Rs 20,000-crore life care segment under which it will finance expenses for stem cells storage units, cosmetics-based hair treatment, dental and eye care, IVF & maternity care, laproscopic cure for a dozen ailments, and elective medical/paramedical care for many other issues. The company, which claims to be the first to enter this segment in the country, expects to net around Rs 1,000 crore in sales over the next five years from this business hoping to an encore of the massive demand for such segmental funding in the Western markets where life care segment is a booming business.

- **Sobha Ltd** has raised Rs 45 crore through private placement of non-convertible debentures to replace costlier debt. The Bengaluru-based developer has raised Rs 125 crore so far this month through NCDs. The company has on March 21, 2016 allotted secured redeemable non-convertible debentures aggregating to Rs 45 crore on private placement basis

- **IDBI Bank** said it plans to raise Rs 20,000 crore from bonds in one or more tranches next fiscal to fund business growth. The fund would be raised in one or more tranches comprising senior or infrastructure bonds, Basel-III compliant tier-II or additional tier-I bonds by way of private placement or public issue in 2016-17

- **Financial services firm ECL Finance** has invoked shares worth over Rs 130 crore in Vijay Mallya-led United Breweries Ltd (UBL) pledged by two different promoter entities. ECL Finance had invoked 7.05 lakh shares pledged by Kamsco Industries Pvt Ltd, accounting for 0.27 percent stake, on March 17

- **McNally Bharat** said its board has approved merger of the company, its subsidiary McNally Sayaji Engineering and EMC Ltd with Kilburn Engineering . McNally Bharat Engineering said the board has agreed to form a committee with representative from each of the aforesaid companies to oversee the preparation of a draft Scheme of Amalgamation. The board in its meeting has "approved in principle a proposal to merge the company, its subsidiary McNally Sayaji Engineering Ltd and EMC Ltd with Kilburn Engineering Ltd.

- **Puravankara announced** back into western region with a proposed development of 30 acres in Mundhwa, Pune. Purva Silversands, the first phase of development across 20 acres, is being launched as a unique integrated lifestyle district with a design theme

- **Emami** drags Patanjali to court, claims Patanjali launch of 'Kesh Kanti' as an infringement of its trade mark 'Kesh King' – court directed Patanjali to stop dealing with the product for 10 weeks

- **ITC** has hiked prices of some cigarette brands. The hike is for two of its flagship brands Classic and Gold Flake Kings.

- **U.K. Office for National Statistics (ONS)** said the rate of consumer price inflation rose by a seasonally adjusted 0.3% last month, below forecasts for an increase of 0.4% and unchanged from 0.3% in January.

- **German research institute Ifo** said its Business Climate Index rose to a seasonally adjusted 106.7 this month from a reading of 105.7 in February, above forecasts for 106.0.

- **Flash Germany Composite Output Index**, which measures the combined output of both the manufacturing and service sectors held steady 54.1 in March, unchanged from the prior month and above expectations for 53.9.

- **U.S. consumer sentiment** fell to a seasonally adjusted 90.0, from 91.7 in the preceding month. Analysts had expected UoM consumer sentiment to rise to 92.2 last month.

- **Canadian core CPI** rose to a seasonally adjusted 0.5%, from 0.3% in the preceding month. Analysts had expected Canadian core CPI to rise 0.5% last month.

- **Canadian consumer price inflation** rose to 0.2% on a monthly basis and before seasonal adjustment, from 0.2% in the preceding month. Analysts had expected Canadian consumer price inflation to rise 0.4% last month.

Economic Calendar

Country	Monday 21th Mar 16	Tuesday 22th Mar 16	Wednesday 23th Mar 16	Thursday 24th Mar 16	Friday 25th Mar 16
US	Flash Manufacturing PMI , Existing Home Sales , Flash Services PMI.	HPI m/m.	New Home Sales , Crude Oil Inventories.	Core Durable Goods Orders m/m , Unemployment Claims , Durable Goods Orders m/m .	Final GDP q/q , Final GDP Price Index q/q , Revised UoM Consumer Sentiment , Revised UoM Inflation Expectations.
UK/EURO ZONE	French Flash Manufacturing PMI , French Flash Services PMI, German Flash Manufacturing PMI , German Flash Services PMI, Flash Manufacturing PMI , Flash Services PMI , Current Account , CBI Industrial Order Expectations.	CPI y/y , PPI Input m/m , RPI y/y , German ZEW Economic Sentiment , ZEW Economic Sentiment , Employment Change q/q .	German Ifo Business Climate , Public Sector Net Borrowing , BBA Mortgage Approvals , Belgian NBB Business Climate.	GfK German Consumer Climate, ECB Economic Bulletin , Retail Sales m/m , Targeted LTRO , FPC Statement.	
INDIA					



(Regn. No. : INP 000004011)

Narnolia Securities Ltd.

Narnolia Research Lab
Stellar IT Park | 5th Floor | Office Space No. 6 | Tower-II Ind Plot No. C-25 | Sector-62 | Noida | Ph : 0120-4215110

Central Strategy Desk - Kolkata
124 | 1st Floor | 7/1 Lords Sinha Road | Kolkata - 71
Ph : 033-22821500 | M : 93347 14418, 98302 69810