

SGX NIFTY : 8481 ( 21 Pt Up )

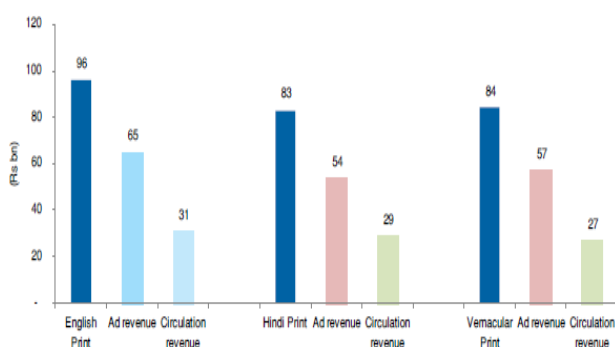
**Quote of the Day**

"Abnormally good or abnormally bad conditions do not last forever. This is true not only of general business but of particular industries as well. Corrective forces are often set in motion which tend to restore profits where they have disappeared, or to reduce them where they are excessive in relation to capital."

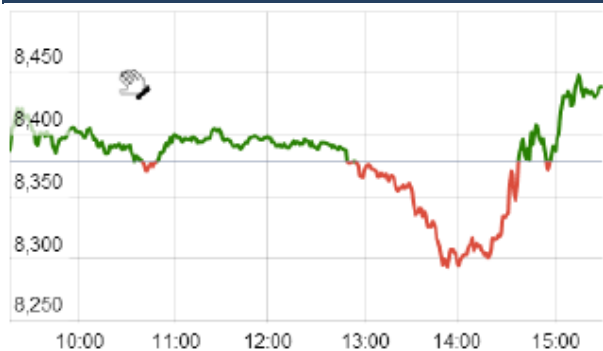
Benjamin Graham

**Chart of the Day**

**CRR Rate Trend**



**Index Action Nifty ( 22th Apr 15 )**



**Index**

Contents	Page	Coverage
News	2	Update
Economic Calendar	4	Update
Result Calendar Q4FY15	3 to 4	Update

**Market**

Name	Value	Change
Sensex	27,890.13	214.09
Nifty	8429.7	51.95
DOW	18,038.27	88.86
NASDAQ	5,035.17	21.07
CAC	5,211.09	18.45
DAX	11,867.37	(72.21)
FTSE	7,028.24	(34.69)
NIKKIE	20,205.22	71.42
HANG SENG	28,112.38	178.35
EW ALL SHARE	14403.9	25.92

**Instituional Turnover**

**FII**

Investor	Buy(Cr.)	Sale(Cr.)	Net(Cr.)
22th Apr,15	4919.59	5829.74	(910.15)
Apr,15	52321.33	52825.17	(503.84)
2015	369328.76	345899.99	23428.77

**DII**

Investor	Buy(Cr.)	Sale(Cr.)	Net(Cr.)
22th Apr ,15	2227.97	2009.99	217.98
Apr,15	19381.40	17486.56	1894.84
2015	134357.72	138437.57	(4079.85)

**Commodity Price**

Commodity/Currencies	Value	
GOLD	26620.00	↓
SILVER	35793.00	↓
CRUDEOIL	56.54	↑
COPPER	372.65	↓
NATURALGAS	163.90	↑
DOLLAR/RS.	62.82	↓
EURO/RS.	67.25	↑
POUND/RS.	94.67	↑

## Market Snapshot

### Top Price Performers

Top Performers 1D	% Change	Top Performers 1W	% Change	Top Performers 1M	% Change
TANEJAERO	20.00	IOLCP	42.63	AANJANEYA	165.19
PETRONENGG	19.98	SHIVACEM	37.94	AMTEKINDIA	125.36
RICOHQ	19.98	MUDRA	35.43	GEMINI	90.54
AADHAARVEN	18.75	BILENERGY	33.33	ESSDEE	84.80
FMGOETZE	18.62	PRAKASHCON	28.02	BHAGWATIHO	79.87

### Worst Price Performers

Worst Performers 1D	% Change	Worst Performers 1W	% Change	Worst Performers 1M	% Change
HOVS	(13.04)	HOVS	(34.88)	PRITI	(47.41)
SYMPHONY	(11.19)	MARG	(24.21)	GLODYNE	(43.48)
CALSREF	(11.11)	AXIS-IT&T	(22.58)	KGNENT	(38.56)
COMFINTE	(10.16)	CMAHENDRA	(20.75)	SAMTEL	(37.23)
PRAKASHCON	(9.86)	MAHAPOL	(20.61)	SHLAKSHMI	(33.66)

## Top News

- **Symphony Mgt Guideline** : The company is confident of achieving consolidated CAGR growth of 20-25 over the medium to long-term by maintaining current levels of profitability and operating margins . Going forward with the help of pricing power, new launches and economies of scale, the company is confident of keeping its EBITDA margins steady at current levels of around 30 percent. Companies products are priced at around 5-12 percent premium to its peers .

- **8K Miles** to acquire Cintel Systems, the leading UI & UX, Mobile Application Development and Services Company . The total consideration of stock & Cash for aquisition is \$ 3750000 ( \$ 1000000 in cash & \$ 2750000 ) .

- **Fund Action : Sun Pharma** : -Aranda Investment Mauritius buys 2 crore shares at Rs 930.16/share . Goldman Sachs (Singapore) buys 5.12 crore shares at Rs 930.16/share . Daiichi Sankyo Company sells 21.4 crore shares at Rs 931.58/share

- **Rain Industries** : Pabrai Investment Fund buys 51.1 lakh shares at Rs 35.4/share . CIR International sells 56 lakh shares at Rs 35.4/share

- **Magnum Multicap Fund** bought 2,00,000 shares of Sagar Cements at Rs 350 and SBI Infrastructure Fund Series I bought 5,65,862 shares at Rs 350 on the BSE.

- **YES Bank** is looking at raising \$1 billion by selling shares in local and overseas markets. Yes Bank said its board of directors in a meeting empowered the Capital Raising Committee, to raise funds by way of issuance of equity capital up to \$1 billion in one or more tranches on such terms and conditions as it may deem fit.

- **Reliance Power** has achieved Power Station Commercial Operation (COD) by operating all six units comprising 3960 MW continuously for 24 hours.

- **Tech Mahindra Ltd** launched its fourth center in Philippines . The IT & BPO major has been operational in Philippines since 2008, with two centers in Manila and one in Cebu. This addition makes Tech Mahindra one-of-the fastest growing service providers in the region.

- **M&M** is looking to hike Ssangyong stake to 85 percent for which around Rs 1500 crore has been set aside. By year-end, M&M plans to increase its stake in Ssangyong to 90-95 percent, thereby giving it almost 100 percent ownership.

- **eClerx** had signed a definitive agreement to acquire of CLX Europe S.P.A. (Italy), a joint stock limited liability company incorporated and existing under laws of Italy, through its subsidiary eClerx Investments (UK) Limited .

- **Tata Consultancy Services** announced that it has partnered with Solace Systems, the leading provider of next generation messaging middleware solutions. This collaboration will enable customers to quickly and cost-effectively implement big data, mobility and Internet of Things (IoT) initiatives.

- **The European Central Bank** will continue to fund Greek banks as long as they stay solvent and have enough collatera , dismissing talk that Athens might ditch the euro.

- **US Energy Information Administration** said that U.S. Gasoline Inventories fell to a seasonally adjusted annual rate of -2.135M, from -2.072M in the preceding quarter. Analysts had expected U.S. Gasoline Inventories to fall -0.700M in the last quarter.

- **European Commission** said that Euro zone consumer confidence fell to an annual rate of -4.6, from -3.7 in the preceding month. Analysts had expected Euro zone consumer confidence to fall -2.8 last month.

- **U.S National Association of Realtors** said that home sales rose to 5.19M, from 4.89M in the preceding month whose figure was revised up from 4.88M.

- **Korea National Statistical Office** said that South Korean GDP rose to a seasonally adjusted 0.8%, from 0.3% in the preceding month.

### Result Calendar Q4FY15

BSE Code	Company Name	Date	BSE Code	Company Name	Date
532840	ADVANTA	23-Apr-15	532183	GAYATRI	27-Apr-15
502761	BLUBLND-B	23-Apr-15	532482	GRANULES	27-Apr-15
532792	CAIRN	23-Apr-15	509675	HIL	27-Apr-15
532443	CERA	23-Apr-15	532174	ICICIBANK	27-Apr-15
532175	CYIENT	23-Apr-15	534816	INFRATEL	27-Apr-15
533896	FERVENTSYN	23-Apr-15	538835	INTELLECT	27-Apr-15
523477	GUJRATGAS	23-Apr-15	533148	JSWENERGY	27-Apr-15
500179	HCL-INSYS	23-Apr-15	500241	KIRLOSBROS	27-Apr-15
500180	HDFCBANK	23-Apr-15	532896	MAGNUM	27-Apr-15
502330	IPAPPM	23-Apr-15	532500	MARUTI	27-Apr-15
533519	L&TFH	23-Apr-15	512115	ROSEMER	27-Apr-15
523457	LINDEINDIA	23-Apr-15	500407	SWARAJENG	27-Apr-15
532720	M&MFIN	23-Apr-15	512070	UPL	27-Apr-15
500290	MRF	23-Apr-15	530197	BAGADIA	28-Apr-15
532200	MYSOREBANK	23-Apr-15	532454	BHARTIARTL	28-Apr-15
532735	RSYSTEMINT*	23-Apr-15	532548	CENTURYPLY	28-Apr-15
532663	SASKEN	23-Apr-15	533167	COROENGG	28-Apr-15
500472	SKFINDIA	23-Apr-15	500135	ESSELPRO	28-Apr-15
533121	SQSBFSI	23-Apr-15	532345	GATI	28-Apr-15
506597	AMAL	24-Apr-15	532424	GODREJCP	28-Apr-15
511243	CHOLAFIN	24-Apr-15	532822	IDEA	28-Apr-15
505790	FAGBEARING	24-Apr-15	532771	JHS	28-Apr-15
500150	FOSECOIND	24-Apr-15	500245	KIRLIFER	28-Apr-15
500189	HINDUJAVEN	24-Apr-15	532400	KPIT	28-Apr-15
530055	HRMNYCP	24-Apr-15	538503	MARICOKAYEL	28-Apr-15
535789	IBULHSGFIN	24-Apr-15	532504	NAVINFLUOR	28-Apr-15
532960	IBVENTURES	24-Apr-15	504112	NELCO	28-Apr-15
500209	INFY	24-Apr-15	532498	SHRIRAMCIT	28-Apr-15
500162	PARRYUGAR	24-Apr-15	538635	SNOWMAN	28-Apr-15
513519	PITILAM-₹	24-Apr-15	517166	SPELS	28-Apr-15
512529	SEQUENT	24-Apr-15	500408	TATAELXSI	28-Apr-15
500550	SIEMENS	24-Apr-15	532144	WELCORP	28-Apr-15
513262	SSWL	24-Apr-15	504067	ZENSARTECH	28-Apr-15
509930	SUPREMEIND	24-Apr-15	500425	AMBUJACEM	29-Apr-15
512595	UNIMOVR	24-Apr-15	532523	BIOCON	29-Apr-15
513729	AROGRANITE-₹	25-Apr-15	511072	DHFL	29-Apr-15
538713	ATISHAY	25-Apr-15	500469	FEDERALBNK	29-Apr-15
532522	PETRONET	25-Apr-15	532622	GDL	29-Apr-15
531169	SKPSEC	25-Apr-15	530141	GYANDEV	29-Apr-15
532538	ULTRACEMCO	25-Apr-15	500010	HDFC	29-Apr-15
531221	MAYURFL	26-Apr-15	532129	HEXAWARE	29-Apr-15
532418	ANDHRABANK	27-Apr-15	500233	KAJARIACER	29-Apr-15
533573	APLLTD	27-Apr-15	534690	LAKSHVILAS	29-Apr-15
531591	BAMPSL	27-Apr-15	513269	MANINDS	29-Apr-15
531340	BERVINL	27-Apr-15	532366	PNBGILTS	29-Apr-15
506894	CHEMFALKAL	27-Apr-15	531324	ROSELABS	29-Apr-15
507886	DHRUVES	27-Apr-15	532983	RPLIFE	29-Apr-15
523754	EPCIN	27-Apr-15	500674	SANOFI	29-Apr-15

500387	SHREECEM	29-Apr-15	500300	GRASIM	2-May-15
505827	SNL	29-Apr-15	513709	SHILGRAVQ-₹	2-May-15
531359	SRAMSET	29-Apr-15	516030	YASHPPR-₹	2-May-15
500295	SSLT	29-Apr-15	504988	ZWELCAST	2-May-15
501242	TCIFINANCE	29-Apr-15	522134	ARTSONEN	4-May-15
504966	TINPLATE	29-Apr-15	533257	INDOSOLAR	4-May-15
532343	TVSMOTOR	29-Apr-15	532698	NITINSPIN	4-May-15
531147	ALICON	30-Apr-15	531768	POLYMED	4-May-15
526125	ARHNTTO	30-Apr-15	533228	SKSMICRO	4-May-15
532493	ASTRAMICRO	30-Apr-15	532953	VGUARD	4-May-15
500027	ATUL	30-Apr-15	505665	ABCBEARS-₹	5-May-15
531994	AUTOPINS	30-Apr-15	533108	BTTL	5-May-15
532215	AXISBANK	30-Apr-15	500280	CENTENKA	5-May-15
531203	BRANDREAL	30-Apr-15	500040	CENTURYTEX	5-May-15
500085	CHAMBLFERT	30-Apr-15	500096	DABUR	5-May-15
506395	COROMANDEL	30-Apr-15	526821	DAICHI-₹	5-May-15
531155	EPSOMPRO	30-Apr-15	509895	HINDMILL	5-May-15
500086	EXIDEIND	30-Apr-15	511208	IVC	5-May-15
509567	GOACARBON-₹	30-Apr-15	500247	KOTAKBANK	5-May-15
533150	GODREJPROP	30-Apr-15	521018	MARALOVER	5-May-15
513343	GRANDFONRY	30-Apr-15	532218	SOUTHBANK	5-May-15
500185	HCC	30-Apr-15	511676	GICHSGFIN	6-May-15
532659	IDFC	30-Apr-15	523874	PRECISION	6-May-15
512329	JARITEX	30-Apr-15	521234	SRINACHA-₹	6-May-15
590003	KARURVYSYA	30-Apr-15	531574	VASINFRA	6-May-15
531692	KHYATI	30-Apr-15	530063	YASHRAJC	6-May-15
513605	LANCO INDUST	30-Apr-15	531581	ALKADIA	7-May-15
500250	LGBBROSLTD	30-Apr-15	500620	GESHIP	7-May-15
533007	LGBFORGE	30-Apr-15	534328	HEXATRADEX	7-May-15
532313	MAHLIFE	30-Apr-15	500378	JINDALSAW	7-May-15
530243	MANGASOF	30-Apr-15	500307	NIRLON	7-May-15
531642	MARICO	30-Apr-15	531209	NUCLEUS	7-May-15
512103	NIDHGRN	30-Apr-15	507753	SREERAYA	7-May-15
500730	NOCIL	30-Apr-15	504959	STOVACQ	7-May-15
532481	NOIDATOLL	30-Apr-15	500114	TITAN	7-May-15
500313	OILCOUNTUB	30-Apr-15	520113	VESUVIUS	7-May-15
521080	PASARI	30-Apr-15	526269	CRSTCHM	8-May-15
532254	POLARIS	30-Apr-15	505200	EICHERMOT	8-May-15
500540	PREMIER	30-Apr-15	507815	GILLETTE	8-May-15
509423	SEL	30-Apr-15	500165	KANSAINER	8-May-15
532638	SHOPERSTOP	30-Apr-15	524000	MAGMA	8-May-15
511218	SRTRANSFIN	30-Apr-15	524558	NEULANDLAB	8-May-15
524204	TEEAI	30-Apr-15	500459	PGHH	8-May-15
531652	THIRDFIN	30-Apr-15	532461	PNB	8-May-15
523868	UBEINDL	30-Apr-15	505192	SMLISUZU	8-May-15
513375	CARBORUNIV	1-May-15	520056	SUNCLAYLTD	8-May-15
523708	EIMCOELECO	1-May-15	530789	CEEJAY	9-May-15
505700	ELECON	1-May-15	523411	ADCINDIA	11-May-15
533088	MHRIL	1-May-15	530889	ALKA	11-May-15
523756	SREINFRA	1-May-15	532047	ASIANFILMS	11-May-15

532756	MAHINDCIE	11-May-15	500301	NEPCMICON	27-May-15
532390	TAJGVK	11-May-15	523236	SHRENUJ	27-May-15
500877	APOLLOTYRE	12-May-15	512153	SPECMKT	27-May-15
500477	ASHOKLEY	12-May-15	506655	SUDARSCHEM	27-May-15
534804	CARERATING	12-May-15	509038	VOLLF	27-May-15
500124	DRREDDY	12-May-15	500008	AMARAJABAT	28-May-15
500144	FINCABLES	12-May-15	508939	BLCISER	28-May-15
500266	MAHSCOOTER	12-May-15	506405	DHARAMSI	28-May-15
503772	MODWOOL	12-May-15	530779	DYNAMICP	28-May-15
517334	MOTHERSUMI	12-May-15	531463	GBLINFRA	28-May-15
534369	TBZ	12-May-15	531737	GREENCREST	28-May-15
514142	TTL-\$	13-May-15	511092	JMDTELEFILM	28-May-15
523736	DPL	14-May-15	506113	LIFELINE	28-May-15
517044	IDM	14-May-15	530557	NCLRESE	28-May-15
506767	ALKYLAMINE	15-May-15	505250	GGDANDE	29-May-15
500420	TORNTPHARM	15-May-15	500202	INDLEASE	29-May-15
534742	ZUARI	15-May-15	538422	JACKSON	29-May-15
500780	ZUARIGLOB	15-May-15	535730	KHOBSURAT	29-May-15
532133	IFGLREFRAC	16-May-15	523323	KOVAI	29-May-15
534184	NAGAROIL	16-May-15	500520	M&M	29-May-15
526721	NICCOPAR-\$	16-May-15	501343	MOTOGFIN	29-May-15
532527	RKFORGE	16-May-15	532777	NAUKRI	29-May-15
532410	TRANSCOR	18-May-15	531049	NEELKAN	29-May-15
590043	HARITASEAT-\$	19-May-15	500333	PIXTRANS	29-May-15
532978	BAJAJFINSV	20-May-15	535514	PRIMECAPM	29-May-15
500034	BAJFINANCE	20-May-15	532915	RELIGARE	29-May-15
532977	BAJAJ-AUTO	21-May-15	508963	STRLGUA	29-May-15
500490	BAJAJHLDNG	21-May-15	521226	UNIROYAL	29-May-15
500414	TIMEX-\$	21-May-15	531831	UNISH	29-May-15
532156	VAIBHAVGBL	21-May-15	526941	VAICC	29-May-15
500452	NEPCAGRO	22-May-15	511690	WARNER	29-May-15
531077	NEPCPAPER	22-May-15	512587	ZODJRD MJ	29-May-15
521192	NEPCTEX	22-May-15	531223	ANJANI-\$	30-May-15
522113	TIMKEN	22-May-15	532352	KIRLMU	30-May-15
532644	JKCEMENT	23-May-15	532537	LUMAXAUTO	30-May-15
530835	ELTROL	25-May-15	526251	MIDEASTP	30-May-15
531528	MAARSOFTW	25-May-15	526891	MKTCREAT	30-May-15
531319	MARUTISE	25-May-15	521246	PARASPETRO	30-May-15
532349	TCI	25-May-15	531931	SAICAPI	30-May-15
500133	ESABINDIA	26-May-15	530905	SAINDUS	30-May-15
526558	JAMEHOT	26-May-15	530125	SAMRATPH-\$	30-May-15
512618	RLF	26-May-15	524703	SANDUPHQ	30-May-15
500164	GODREJIND	27-May-15	524103	LINEARPO	31-May-15
			511626	RRFIN	14-Dec-15

Country	Monday 20 April 15	Tuesday 21 April 15	Wednesday 22 April 15	Thursday 23 April 15	Friday 24 April 15
US	CB Leading Index m/m .		Existing Home Sales , Crude Oil Inventories .	Unemployment Claims , New Home Sales , Natural Gas Storage .	Core Durable Goods Orders m/m ,Durable Goods Orders m/m , Revised UoM Consumer Sentiment .
UK/EURO ZONE	French Flash Manufacturing PMI ,French Flash Services PMI , German Flash Manufacturing PMI , German Flash Services PMI , Flash Manufacturing PMI , Flash Services PMI .	CPI y/y , German ZEW Economic Sentiment , ZEW Economic Sentiment , PPI Input m/m , RPI y/y .	MPC Official Bank Rate Votes , MPC Asset Purchase Facility Votes .	Spanish Unemployment Rate , German Ifo Business Climate , Retail Sales m/m .	Belgian NBB Business Climate .
INDIA					

### Result Q4FY15

NSE CODE	BSE CODE	SALES Rs (cr.)	SALES YOY	PAT Rs Cr	PAT YOY
WIPRO	507685	10651.5	2.90	2141.5	-8.99
VSTIND	509966	219	15.80	40.7	-21.56
CIMMCO	505230	23.46	-54.50	-3.78	-7660.00
GMBREW	507488	77.92	3.90	5.72	-5.30
GUJHOTE	507960	0.88	4.80	1.04	-36.20
INTLTRAVHS	500213	46.47	4.00	4.85	-0.21
JAYBARMARU	520066	335.21	1.70	10.02	370.81
LANDMARC	532275	0.18	-57.10	-1.12	-45.45
LLOYDMETAL	512455	123.15	-32.90	-2.56	80.34
S E Inv	532900	48.04	-12.70	3.67	-65.20
TWL	532966	118.47	59.60	8.78	398.86
Mastek Ltd.	523704	276.11	19.70	6.44	-43.10
KSBPUMPS	500249	189.32	9.20	6.41	-57.63



SEBI Registered Portfolio Manager

(Regn. No. : INP 000004011)

## Narnolia Securities Ltd.

### Narnolia Research Lab

Stellar IT Park | 5th Floor | Office Space No. 6 | Tower-II Ind Plot No. C-25 | Sector-62 | Noida | Ph : 0120-4215110

### Central Strategy Desk - Kolkata

124 | 1st Floor | 7/1 Lords Sinha Road | Kolkata - 71  
Ph : 033-22821500 | M : 93347 14418, 98302 69810