

SGX NIFTY : 8048 (58 Pt Up)

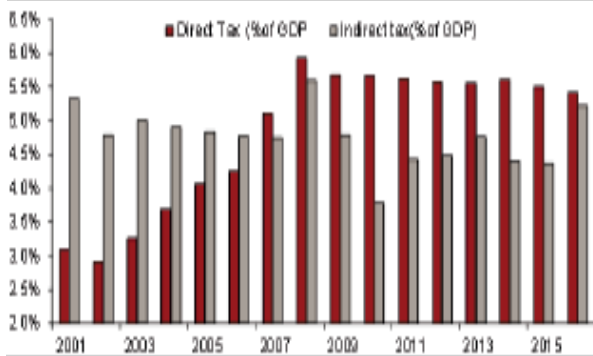
Quote of the Day

"It's not given to human beings to have such talent that they can just know everything about everything all the time. But it is given to human beings who work hard at it - who look and sift the world for a mispriced bet - that they can occasionally find one. And the wise ones bet heavily when the world offers them that opportunity. They bet big when they have the odds. And the rest of the time they don't. It's just that simple. "

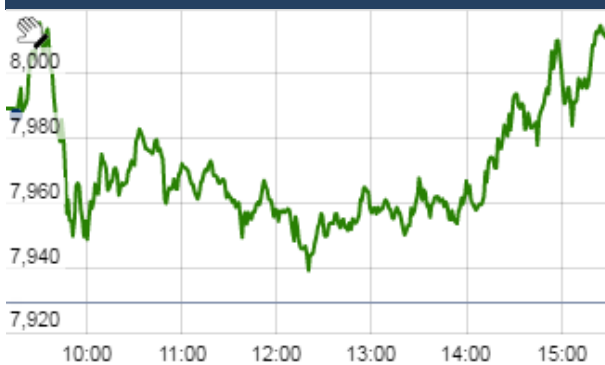
Charlie Munger

Chart of the Day

Direct Tax as % of GDP



Index Action Nifty (22th Nov 16)



Index

| Contents | Page | Coverage |
|-------------------|------|----------|
| News | 2 | Update |
| Economic Calendar | 3 | Update |

Market

| Name | Value | Change |
|--------------|-----------|--------|
| Sensex | 25,960.78 | 195.64 |
| Nifty | 8002.30 | 73.20 |
| DOW | 19,023.87 | 67.18 |
| NASDAQ | 5,386.35 | 17.49 |
| CAC | 4,548.35 | 18.77 |
| DAX | 10,713.85 | 28.72 |
| FTSE | 6,819.72 | 41.86 |
| NIKKEI | 18,162.94 | 56.92 |
| HANG SENG | 22,715.24 | 37.17 |
| EW ALL SHARE | 14286.96 | 160.01 |

Institutional Turnover

FII

| Investor | Buy(Cr.) | Sale(Cr.) | Net(Cr.) |
|-----------|-----------|-----------|------------|
| 22-Nov-16 | 4418.49 | 5111.34 | (692.85) |
| Nov,16 | 73360.76 | 87350.86 | (13990.10) |
| 2016 | 957331.19 | 948923.81 | 8407.38 |

DII

| Investor | Buy(Cr.) | Sale(Cr.) | Net(Cr.) |
|-----------|-----------|-----------|----------|
| 22-Nov-16 | 2727.86 | 1652.66 | 1075.20 |
| Nov,16 | 49508.54 | 37576.96 | 11931.58 |
| 2016 | 441149.71 | 418502.10 | 22647.61 |

Commodity Price

| Commodity/Currencies | Value | |
|----------------------|----------|---|
| GOLD | 29139.00 | ↑ |
| SILVER | 40790.00 | ↓ |
| CRUDEOIL | 48.03 | ↑ |
| COPPER | 378.30 | ↑ |
| NATURALGAS | 204.20 | ↑ |
| DOLLAR/RS. | 68.25 | ↑ |
| EURO/RS. | 72.70 | ↑ |
| POUND/RS. | 84.98 | ↑ |

Market Snapshot

Top Price Performers

| Top Performers 1D | % Change | Top Performers 1W | % Change | Top Performers 1M | % Change |
|-------------------|----------|-------------------|----------|-------------------|----------|
| TANTIACONS | 19.85 | CALSREF | 33.33 | PNBGILTS | 66.02 |
| MICROSEC | 18.27 | VIJSHAN | 27.01 | MBSWITCH | 48.53 |
| SUJANAUNI | 15.38 | GOLDINFRA | 26.30 | GOLDENTOBC | 38.93 |
| A2ZMES | 12.80 | MAWANASUG | 24.25 | METKORE | 24.77 |
| PRADIP | 12.18 | OUDHSUG | 21.79 | SRSREAL | 24.51 |

| Worst Performers 1D | % Change | Worst Performers 1W | % Change | Worst Performers 1M | % Change |
|---------------------|----------|---------------------|----------|---------------------|----------|
| ENERGYDEV | (9.99) | SUNILHITEC | (41.65) | ENERGYDEV | (61.47) |
| SUNILHITEC | (9.98) | ENERGYDEV | (41.64) | PRAKASHCON | (60.89) |
| PANCHMSTEL | (9.89) | PRAKASHCON | (21.99) | SUNILHITEC | (57.69) |
| GOLDINFRA | (8.61) | BLBLIMITED | (21.12) | PRIMEPRO | (50.27) |
| METKORE | (7.80) | TNPETRO | (18.71) | DIAPOWER | (47.36) |

Top News

• **Britannia Industries** is aiming to double its turnover in the next four to five years and also planning to expand presence overseas in a big way as part of its growth strategy.

The company is looking to expand its business in the countries having similar business environment like that of India and is also open to inorganic growth if it gets a right opportunity. The company, which had a revenue of Rs 7,947.90 crore in FY2015-16, is aiming to double it in next four to five years on back of continued growth in current business and new categories in which it is planning to enter. The company is working on multiple categories. The company also has investment plans for this.

• Bajaj Auto Management Interview:

Post demonetisation a significant decline in the sales of 2 wheelers. 50% in rural India and 25% in urban India.

The management expects 25% YoY decline in November 2-wheeler sales.

New launches won't be affected due to currency ban.

• **A2Z Infra Engineering** has received contract from Chhattisgarh State Power Transmission Company. The said contract is for construction of 132 KV S/S Bijapur and associated EHV Line on turnkey basis. The aggregate value of the said contract is Rs 41,33,69,658.

• **Vedanta** will raise up to Rs 300 crore through private placement of non-convertible debentures (NCDs). A committee constituted by Vedanta's Board today approved offering for subscription, on a private placement basis, up to 3,000 secured, rated, listed, redeemable, NCDs of face value Rs 10 lakh each aggregating up to Rs 300 crore

• **Larsen & Toubro (L&T)** said its construction arm has bagged projects worth Rs 1,926 crore across various business verticals. In the power transmission and distribution segment, it bagged orders worth Rs 571 crore. The business continued its winning streak by garnering electrification work orders under the Integrated Power Development Scheme (IPDS) and Deen Dayal Upadhyay Gram Jyoti Yojana (DDUGJY) schemes of the government.

• **BGR Energy Systems** has bagged Rs 2,788.60 crore order from NLC India Ltd for its 1,980 MW thermal power plant in Ghatampur, Uttar Pradesh. Letter of Award (LoA) was issued to BGR Energy Systems, Chennai, for the balance of plant package (GA3 package) of Ghatampur power project (3x660 MW) of Neyveli Uttar Pradesh Power Ltd (NUPPL), a subsidiary of NLC India Ltd (NLCI) to a value of Rs 2,788.60 crore. NLCI, jointly with Uttar Pradesh Rajya Vidyut Utpadan Nigam Ltd (UPRVUNL), is setting up a 1,980 MW coal-based super critical thermal power plant at Ghatampur, Uttar Pradesh through its subsidiary firm NUPPL.

• **Rashtriya Chemicals and Fertilizers Ltd** has informed that in terms of the guidelines issued by the Reserve Bank of India, the Company has issued Commercial Paper for Rs.100 Crore on November 21, 2016, in favour of HDFC Bank Limited

• **Bliss GVS Pharma**'s Kenyan arm has won a three-year contract worth USD 111.40 million (around Rs 760 crore) from Aon Kenya Insurance Brokers. This contract covers outpatient services for over 3,04,060 members. Service payments will be received by the company from Aon, in advance, on a quarterly basis. Part payment for the first quarter has been received from the company

• **Euro zone consumer confidence** fell to an annual rate of -6.1, from -8.0 in the preceding month. Analysts had expected Euro zone consumer confidence to fall -7.8 last month.

• **Richmond Manufacturing Index** rose to a seasonally adjusted annual rate of 4, from -4 in the preceding month. Analysts had expected Richmond Manufacturing Index to rise 1 last month.

• **Canada said that retail sales** rose to 0.6%, from 0.1% in the preceding month whose figure was revised up from -0.1%. Analysts had expected retail sales to rise 0.6% last month.

Result Calendar Q2FY17

| BSE Code | Company Name | Date | BSE Code | Company Name | Date |
|----------|--------------|-----------|----------|--------------|-----------|
| 532935 | ARIES | 23-Nov-16 | 522285 | JAYNECOIND | 28-Nov-16 |
| 500041 | BANARISUG | 23-Nov-16 | 533106 | OIL | 28-Nov-16 |
| 505681 | BIMETAL | 23-Nov-16 | 522113 | TIMKEN | 28-Nov-16 |
| 533263 | GREENPOWER | 23-Nov-16 | 532356 | TRIVENI | 28-Nov-16 |
| 532508 | JSL | 23-Nov-16 | 532389 | VALECHAENG | 28-Nov-16 |
| 517518 | LLOYDELENG | 23-Nov-16 | 506525 | KANORICHEM | 29-Nov-16 |
| 532912 | NET4 | 23-Nov-16 | 523630 | NFL | 29-Nov-16 |
| 534809 | PCJEWELLER | 23-Nov-16 | 500400 | TATAPOWER | 29-Nov-16 |
| 503031 | PENINLAND | 23-Nov-16 | 531426 | TNPL | 29-Nov-16 |
| 500550 | SIEMENS | 23-Nov-16 | 524212 | WANBURY | 29-Nov-16 |
| 532725 | SOLARINDS | 23-Nov-16 | 502355 | BALKRISIND | 30-Nov-16 |
| 535755 | ABFRL | 24-Nov-16 | 532708 | GVKPIL | 30-Nov-16 |
| 517552 | ADVNCMIC | 24-Nov-16 | 520111 | RATNAMANI | 30-Nov-16 |
| 511716 | ESCORTSFIN | 24-Nov-16 | 506390 | CLNINDIA | 01-Dec-16 |
| 523672 | FLEXFO | 24-Nov-16 | 507815 | GILLETTE | 01-Dec-16 |
| 500227 | JINDALPOLY | 24-Nov-16 | 532702 | GSPL | 01-Dec-16 |
| 531687 | KGL | 24-Nov-16 | 540153 | ENDURANCE | 02-Dec-16 |
| 539207 | MANPASAND | 24-Nov-16 | 509073 | HATHWAYB | 02-Dec-16 |
| 532391 | OPTOCIRCUI | 24-Nov-16 | 533177 | IL&FSTRANS | 02-Dec-16 |
| 530239 | SUVEN | 24-Nov-16 | 539302 | POWERMECH | 02-Dec-16 |
| 532382 | BALAJITELE | 25-Nov-16 | 532515 | TVTODAY | 02-Dec-16 |
| 500043 | BATAINDIA | 25-Nov-16 | 500459 | PGHH | 03-Dec-16 |
| 500048 | BEML | 25-Nov-16 | 500023 | ASIANHOTNR | 05-Dec-16 |
| 502219 | BOROSIL | 25-Nov-16 | 500830 | COLPAL | 05-Dec-16 |
| 533162 | HATHWAY | 25-Nov-16 | 532051 | SWELECTES | 05-Dec-16 |
| 521016 | ICIL | 25-Nov-16 | 517300 | GIPCL | 09-Dec-16 |
| 539332 | NAVKARCORP | 25-Nov-16 | 590072 | SUNDRMBRAK | 10-Dec-16 |
| 530549 | SHILPAMED | 25-Nov-16 | 500093 | CROMPGREAV | 12-Dec-16 |
| 500285 | SPICEJET | 25-Nov-16 | 512237 | JAICORPLTD | 12-Dec-16 |
| 590005 | TIDEWATER | 25-Nov-16 | 521070 | ALOKTEXT | 13-Dec-16 |
| 500148 | UFLEX | 25-Nov-16 | 526622 | MFLINDIA | 13-Dec-16 |
| 530343 | GENUSPOWER | 26-Nov-16 | 500338 | PRISMCEM | 13-Dec-16 |
| 506528 | KELENRG | 26-Nov-16 | 533152 | MBLINFRA | 14-Dec-16 |
| 533144 | COX&KINGS | 28-Nov-16 | 509243 | TVSSRICHAK | 14-Dec-16 |
| 500183 | HFCL | 28-Nov-16 | 524038 | VENLONENT | 31-Jan-17 |

| Economic Calendar | | | | | |
|---------------------|---|----------------------------|---|---|--|
| Country | Monday 21th Nov 16 | Tuesday 22th Nov 16 | Wednesday 23th Nov 16 | Thursday 24th Nov 16 | Friday 25th Nov 16 |
| US | Flash Manufacturing PMI , Flash Services PMI. | Existing Home Sales . | Core Durable Goods Orders m/m , Durable Goods Orders m/m , S&P/CS Composite-20 HPI y/y , CB Consumer Confidence , New Home Sales , Crude Oil Inventories , FOMC Meeting Minutes. | Unemployment Claims . | Revised UoM Consumer Sentiment , Revised UoM Inflation Expectations . |
| UK/EURO ZONE | French Flash Manufacturing PMI , French Flash Services PMI , Spanish Unemployment Rate , German Constitutional Court Ruling , German Flash Manufacturing PMI , German Flash Services PMI , Flash Manufacturing PMI, Flash Services PMI . | Italian Retail Sales m/m . | GfK German Consumer Climate , ECB Financial Stability Review , Autumn Forecast Statement . | German Final GDP q/q , German Ifo Business Climate , Italian Monthly Unemployment Rate . | German Import Prices m/m , French Consumer Spending m/m , Second Estimate GDP q/q , Prelim Business Investment q/q , Index of Services 3m/3m. |
| INDIA | | | | | |

Risk Disclosure & Disclaimer : This report/message is for the personal information of the authorized recipient and does not construe to be any investment, legal or taxation advice to you. Narnolia Securities Ltd. (Hereinafter referred as NSL) is not soliciting any action based upon it. This report/message is not for public distribution and has been furnished to you solely for your information and should not be reproduced or redistributed to any other person in any form. The report/message is based upon publicly available information, findings of our research wing “East wind” & information that we consider reliable, but we do not represent that it is accurate or complete and we do not provide any express or implied warranty of any kind, and also these are subject to change without notice. The recipients of this report should rely on their own investigations, should use their own judgment for taking any investment decisions keeping in mind that past performance is not necessarily a guide to future performance & that the the value of any investment or income are subject to market and other risks. Further it will be safe to assume that NSL and /or its Group or associate Companies, their Directors, affiliates and/or employees may have interests/ positions, financial or otherwise, individually or otherwise in the recommended/mentioned securities/mutual funds/ model funds and other investment products which may be added or disposed including & other mentioned in this report/message. NSL or any of its affiliates or employees shall not be in any way responsible for any loss or damage that may arise to any person from any action taken based on the above information or inadvertent error in the information contained in this report/message.

Narnolia

Advance Strategy · Simple Solutions

(Regn. No. : INP 000004011)

Narnolia Securities Ltd.

Narnolia Research Lab

Stellar IT Park | 5th Floor | Office Space No. 6 | Tower-IIInd Plot
No. C-25 | Sector-62 | Noida | Ph : 0120-4215110

Central Strategy Desk - Kolkata

201 | 2nd Floor | Marble Arch Building | 236B-AJC Bose Road
Kolkata-700 020 , Ph : 033-40501500 |
Email : research@narnolia.com | www.narnolia.com