

SGX NIFTY : 7827.50 (43 Pt Up)

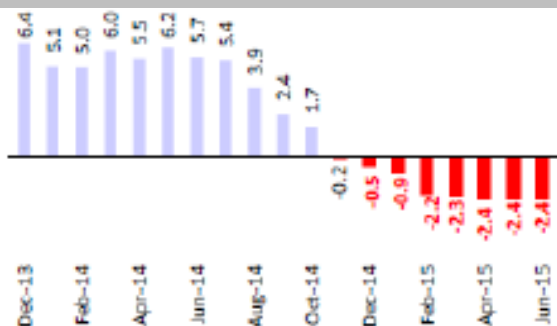
Quote of the Day

"Price fluctuations have only one significant meaning for the true investor. They provide him with an opportunity to buy wisely when prices fall sharply and to sell wisely when they advance a great deal. At other times he will do better if he forgets about the stock market and pays attention to...the operating results of his companies."

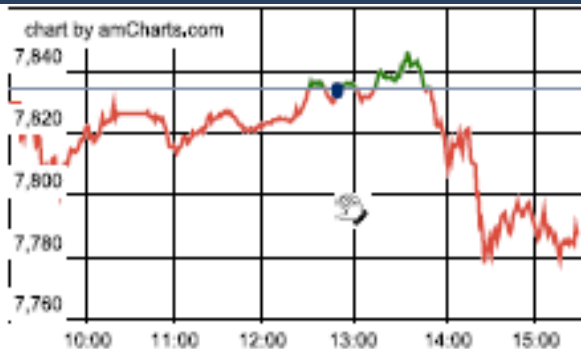
Ben Graham

Chart of the Day

WPI Trend



Index Action Nifty (22th Dec 15)



Index

Contents	Page	Coverage
News	2	Update
Economic Calendar	3	Update

Market

Name	Value	Change
Sensex	25,590.65	(145.25)
Nifty	7786.10	(48.35)
DOW	17,251.42	122.47
NASDAQ	5,001.11	32.19
CAC	4,567.60	2.43
DAX	10,488.75	(9.02)
FTSE	6,083.10	48.23
NIKKIE	18,886.70	(29.42)
HANG SENG	22,058.61	228.59
EW ALL SHARE	13763.57	(48.17)

Instituional Turnover

FII

Investor	Buy(Cr.)	Sale(Cr.)	Net(Cr.)
22-Dec-15	2578.47	2409.74	168.73
Dec,15	47270.30	50839.42	(3569.12)
2015	1097912.84	1114322.45	(16409.61)

DII

Investor	Buy(Cr.)	Sale(Cr.)	Net(Cr.)
22-Dec-15	1362.28	1123.92	238.36
Dec,15	26769.22	18897.72	7871.50
2015	452601.49	387274.82	65326.67

Commodity Price

Commodity/Currencies	Value	
GOLD	25251.00	↓
SILVER	34286.00	↓
CRUDEOIL	36.38	↑
COPPER	312.80	↓
NATURALGAS	124.60	↓
DOLLAR/RS.	66.24	↓
EURO/RS.	72.45	↓
POUND/RS.	98.22	↑

Market Snapshot

Top Price Performers

Top Performers 1D	% Change	Top Performers 1W	% Change	Top Performers 1M	% Change
INFOMEDIA	20.00	SPENTEX	59.89	RAMANEWS	121.56
TIDEWATER	20.00	PIRLIFE	58.41	GEMINI	108.97
RIIL	19.98	INDLMETER	52.62	DONEAR	97.80
PROVOGE	19.93	PARACABLES	45.42	PIRLIFE	92.94
ALCHEM	19.92	RAMANEWS	44.72	INFODRIVE	86.67

Worst Performers 1D	% Change	Worst Performers 1W	% Change	Worst Performers 1M	% Change
JCT	(9.80)	SHRENUJ	(30.17)	SHRENUJ	(41.59)
SHIVACEM	(8.84)	AMTEKINDIA	(16.15)	AMTEKINDIA	(37.21)
BVCL	(7.47)	COMMEXTECH	(16.15)	SUDAR	(33.59)
RESPONIND	(6.87)	SUNILHITEC	(14.23)	KGNIND	(33.45)
SHREYAS	(6.62)	GEMINI	(14.16)	SEZAL	(30.44)

Top News

- **Tata Steel UK**, an indirect subsidiary company of Tata Steel Europe, today announced the signing of a letter of intent with Greybull Capital to enter exclusive negotiations for the potential sale of its Long Products Europe business. Company will continue to work closely with our trade unions and works councils and will communicate any relevant news to employees on an ongoing basis .
- **Orchid Pharma** said its subsidiary has inked a pact with UK's Line Trust International to avail loan of up to USD 800 million (about Rs 5,300 crore) to explore new growth avenues. Orchid Europe Ltd, UK, a wholly-owned subsidiary of the company has entered into a long-term financial arrangement to avail up to USD 800 million as loan with Line Trust International, Guernsey, UK
- **Chambal Fertilisers & Chemicals** said its board has given approval to sell entire shipping business or dispose off all five ships/vessels owned by the company. The company requires fund to set up new ammonia-urea project in Rajasthan. The Board of Directors, at its meeting held today, gave "in-principle consent to the: (i) sale or disposal of one or more or all of the 5 ships/ vessels owned by the company; or (ii) sell, transfer or dispose-off the entire shipping undertaking/business of the company on slump sale basis or some other appropriate structure
- **Piramal Enterprises** announced the acquisition of five brands from drug firm MSD for Rs 92 crore. The acquisition, done by the company's consumer products division, includes brands in the gastro-intestinal segment like Naturo lax, Lactobacil and Farizym. Piramal intends to offer these through the over-the-counter (OTC) route. The brands hold a rich legacy in India and have a high consumer pull .
- **The Cabinet Committee on Economic Affairs (CCEA)** approved ONGC converting its Rs 5,000 crore loan to subsidiary ONGC Videsh Ltd, into equity. Company had extended a loan of Rs 6,000 crore to its overseas investment arm to meet its acquisitions requirements. Of this, Rs 5,000 crore is being converted into equity.
- **Brigade Enterprises** despite the unsold inventory rising in the city from 27,000 units in June-2011 to 84,000 units in June 2015. Mgt says H2FY16 will be better for the company than H1, adding that the company hopes to grow 30-35 percent year-on-year (YoY).
- **RCOM** said that it has sold nearly 150 residential flats in Navi Mumbai for Rs 330 crore, the proceeds from which will be used to repay debt.
- **German Producer Price Inflation** fell to a seasonally adjusted annual rate of -0.2%, from -0.4% in the preceding month. Analysts had expected German Producer Price Inflation to fall -0.2% last month.
- **U.K. Public Sector Net Borrowing** rose to a seasonally adjusted 13.56B, from 6.75B in the preceding quarter whose figure was revised down from 7.47B. Analysts had expected U.K. Public Sector Net Borrowing to rise to 11.00B in the last quarter.
- **Gfk said that its index of Germany's consumer climate** rose to 9.4, from 9.3 in the preceding month. Analysts had expected Gfk consumer climate to remain unchanged at 9.3 last month.
- **U.K. Gfk Consumer confidence** rose to a seasonally adjusted 2, from 1 in the preceding month.
- **Swiss Trade Balance** fell to a seasonally adjusted 3.144B, from 4.086B in the preceding month whose figure was revised down from 4.156B. Analysts had expected Swiss Trade Balance to fall to 3.820B last month.
- **U.S. API Weekly Crude Stock** fell to -3.600M, from 2.300M in the preceding week. Analysts had expected U.S. API Weekly Crude Stock to rise 1.000M last week.

Economic Calendar

Country	Monday 21th Dec 15	Tuesday 22th Dec 15	Wednesday 23th Dec 15	Thursday 24th Dec 15	Friday 25th Dec 15
US	Final GDP q/q , Final GDP Price Index q/q , HPI m/m , Flash Manufacturing PMI , Existing Home Sales , Richmond Manufacturing Index .	Core Durable Goods Orders m/m ,Core PCE Price Index m/m ,Durable Goods Orders m/m , Personal Spending m/m , New Home Sales , Crude Oil Inventories .	Unemployment Claims , Revised UoM Consumer Sentiment , Revised UoM Inflation Expectations , Natural Gas Storage .		Holiday
UK/EURO ZONE	French Flash Manufacturing PMI , GfK German Consumer Climate , French Flash Services PMI , German Flash Manufacturing PMI , German Flash Services PMI , Flash Manufacturing PMI , Flash Services PMI m, Public Sector Net Borrowing .	Current Account , Final GDP q/q , Core Retail Sales m/m , GDP m/m ,	BBA Mortgage Approvals .	Italian 10-y Bond Auction	Holiday
INDIA					



SEBI Registered Portfolio Manager

(Regn. No. : INP 000004011)

Narnolia Securities Ltd.

Narnolia Research Lab

Stellar IT Park | 5th Floor | Office Space No. 6 | Tower-II|nd Plot No. C-25 | Sector-62 | Noida | Ph : 0120-4215110

Central Strategy Desk - Kolkata

124 | 1st Floor | 7/1 Lords Sinha Road | Kolkata - 71
Ph : 033-22821500 | M : 93347 14418, 98302 69810