

SGX NIFTY : 7102 ( 1.5 Pt Down)

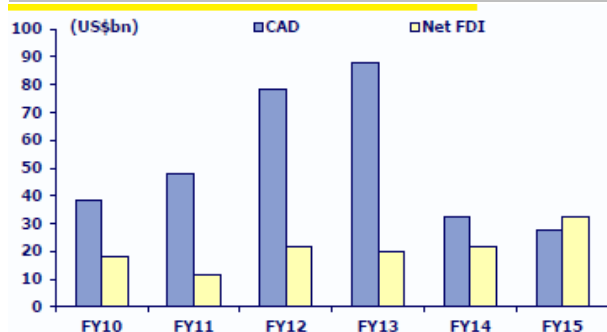
**Quote of the Day**

"We've long felt that the only value of stock forecasters is to make fortune tellers look good. Even now, Charlie (Munger) and I continue to believe that short-term market forecasts are poison and should be kept locked up in a safe place, away from children and also from grown-ups who behave in the market like children."

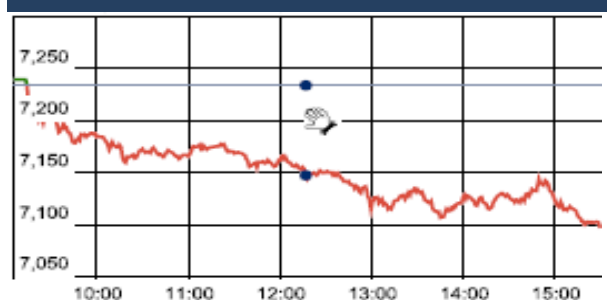
Warren Buffett

**Chart of the Day**

**Current Account Deficit Vs FDI**



**Index Action Nifty ( 23th Feb 16 )**



**Index**

Contents	Page	Coverage
News	2	Update
Economic Calendar	3	Update

**Market**

Name	Value	Change
Sensex	23,410.18	(378.61)
Nifty	7109.55	(125.00)
DOW	16,391.00	-21.44
NASDAQ	4,503.58	(67.03)
CAC	4,238.42	(60.28)
DAX	9,416.77	(156.82)
FTSE	5,962.31	(75.42)
NIKKEI	15,948.31	(103.47)
HANG SENG	19,208.69	(206.09)
EW ALL SHARE	12334.40	(193.65)

**Instituional Turnover**

**FII**

Investor	Buy(Cr.)	Sale(Cr.)	Net(Cr.)
23-Feb-16	3356.14	3645.80	(289.66)
Feb,16	52603.16	59549.29	(6946.13)
2016	124095.08	145397.22	(21302.14)

**DII**

Investor	Buy(Cr.)	Sale(Cr.)	Net(Cr.)
23-Feb-16	1385.32	1127.39	257.93
Feb,16	29797.96	23546.46	6251.50
2016	71502.43	52153.24	19349.19

**Commodity Price**

Commodity/Currencies	Value	
GOLD	29300.00	↑
SILVER	27169.00	↑
CRUDEOIL	32.16	↑
COPPER	319.00	↓
NATURALGAS	127.00	↓
DOLLAR/RS.	68.57	↓
EURO/RS.	75.54	↑
POUND/RS.	95.89	↓

## Market Snapshot

### Top Price Performers

Top Performers 1D	% Change	Top Performers 1W	% Change	Top Performers 1M	% Change
BFINVEST	14.49	RAMKY	56.28	NDTV	59.81
ANDHRACEMT	9.94	SHREYAS	46.55	LLOYDMETAL	58.74
NEYVELILIG	9.77	RUSHIL	34.98	RAMKY	47.38
RAMKY	7.83	BFINVEST	34.87	INFODRIVE	39.02
KAMAHOLD	6.76	LLOYDMETAL	26.92	RUSHIL	34.93

Worst Performers 1D	% Change	Worst Performers 1W	% Change	Worst Performers 1M	% Change
WSI	(13.99)	VIKASGLOB	(25.60)	PDUMJEPULP	(62.24)
REMIMETAL	(13.82)	TFL	(18.39)	AMTEKINDIA	(46.46)
QUADRANT	(11.08)	ZYLOG	(17.30)	AFL	(42.98)
SHARRESLTD	(10.36)	SPECTACLE	(16.67)	PARLESOFT	(40.02)
GREENFIRE	(10.12)	SIMPLXREA	(15.22)	TREEHOUSE	(38.80)

## Top News

- **Neyveli Lignite** said the government had allotted them Talabira-II and III coal mines in Odisha to meet their coal requirements for thermal power projects. The mines would provide them with 31.5 million tonnes (mt) of coal per annum which will be enough to meet our requirement for coal based power generation without depending on any import coming from abroad. The company currently buys coal from Coal India and once they start producing their own coal from the mines, it would definitely turn out to be cheaper
- **Promoter Samvardhana Motherson International (SMIL)** created pledge on 62 lakh shares (representing 0.47 percent equity stake of total paid up equity capital) with IDBI Trusteeship Services. It is in addition to non-convertible debentures issued by SMIL. Total promoter and promoter group shareholding in the company stood at 65.61 percent
- **Hindustan Construction Company** in joint venture with Vensar Construction Company has been awarded Rs 1114 crore contract by the Public Works Department of government of Manipur.
- Beleaguered joint venture for small trucks between Japanese auto major Nissan and Hinduja group flagship **Ashok Leyland** hit a nadir with Nissan issuing a termination of licence notice to one of their three JV companies, effectively sounding a death knell to the idea of growing the business together . The dispute between partners is for a paltry sum of Rs 2.34 crore in royalty, which Nissan says Leyland owes the JV while Leyland alleged that its partner illegally diverted and used plant machinery in violation of government commitments and regulations.
- **Virtusa Corp** has received fair trade regulator CCI's nod to acquire 53 percent stake in mid-tier Indian IT firm Polaris Consulting & Services for about Rs 1,173 crore.
- **Wipro and SugarCRM** announce partnership to deploy CRM solutions for global enterprises
- **Maruti Suzuki India** resumed production at its two manufacturing facilities in Haryana after two days of suspension due to the Jat reservation agitation in the state. The suspension of work at the two plants, located at Gurgaon and Manesar in Haryana, resulted in production loss of around 10,000 units to the company.
- **Tata Consultancy Services** has been selected by Element Financial Corporation to help the company significantly evolve its fleet management technology platform and user experience.
- **Polish Unemployment Rate** rose to a seasonally adjusted 10.3%, from 9.8% in the preceding month. Analysts had expected Polish Unemployment Rate to rise to 10.3% last month.
- **German GDP** rose to a seasonally adjusted 0.3%, from 0.3% in the preceding quarter. Analysts had expected German GDP to rise 0.3% in the last quarter.
- **Insituto Nacional de Estadistica Y Geografia said that Mexican Retail Sales** fell to a seasonally adjusted 3.4%, from 5.7% in the preceding month. Analysts had expected Mexican Retail Sales to rise to 6.1% last month.
- **CBI industrial trends orders** fell to -17, from -15 in the preceding month. Analysts had expected CBI industrial trends orders to rise to -12 last month.
- **Italian CPI** fell to -0.2%, from -0.2% in the preceding month. Analysts had expected Italian CPI to fall -0.2% last month.
- **Federal Statistical Office said that Swiss PPI** fell to a seasonally adjusted -0.4%, from -0.4% in the preceding month. Analysts had expected Swiss PPI to fall -0.2% last month.

### Economic Calendar

Country	Monday 22th Feb 16	Tuesday 23th Feb 16	Wednesday 24th Feb 16	Thursday 25th Feb 16	Friday 26th Feb 16
<b>US</b>	Flash Manufacturing PMI.	S&P/CS Composite-20 HPI y/y , CB Consumer Confidence , Existing Home Sales .	New Home Sales , Crude Oil Inventories.	Core Durable Goods Orders m/m , Unemployment Claims , Durable Goods Orders m/m , HPI m/m , Natural Gas Storage.	Prelim GDP q/q , Core PCE Price Index m/m , Goods Trade Balance , Personal Spending m/m .
<b>UK/EURO ZONE</b>	French Flash Manufacturing PMI ,French Flash Services PMI , German Flash Manufacturing PMI , German Flash Services PMI , Flash Manufacturing PMI, Retail Sales m/m, Public Sector Net Borrowing.	German Ifo Business Climate , Inflation Report Hearings , BBA Mortgage Approvals , 10-y Bond Auction.	Belgian NBB Business Climate , CBI Realized Sales.	German Unemployment Change , M3 Money Supply y/y , Private Loans y/y , Second Estimate GDP q/q , Prelim Business Investment q/q , Index of Services 3m/3m , Final CPI y/y.	German Prelim CPI m/m ,French Consumer Spending m/m , French Prelim CPI m/m , Spanish Flash CPI y/y .
<b>INDIA</b>					

**Narnolia Research Lab**

Stellar IT Park | 5th Floor | Office Space No. 6 | Tower-IIInd Plot No. C-25 | Sector-62 | Noida | Ph : 0120-4215110

**Central Strategy Desk - Kolkata**

124 | 1st Floor | 7/1 Lords Sinha Road | Kolkata - 71  
Ph : 033-22821500 | M : 93347 14418, 98302 69810