

SGX NIFTY : 8159 (117 Pt Down)

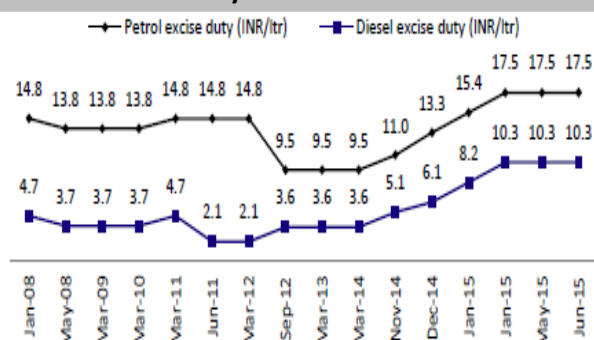
Quote of the Day

"There's a clarity that comes with great ideas: You can explain why something's a great business, how and why it's cheap, why it's cheap for temporary reasons and how, on a normal basis, it should be trading at a much higher level. You're never sitting there on the 40th page of your spreadsheet, as Buffett would say, agonizing over whether you should buy or not."

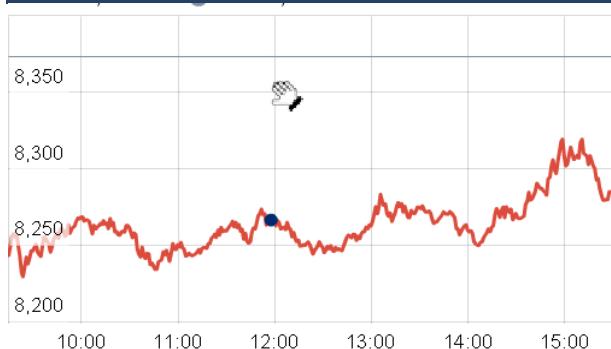
Joel Greenblatt

Chart of the Day

Excise duty of Petroleum Prodct



Index Action Nifty (20th Aug 15)



Index

Contents	Page	Coverage
News	2	Update
Economic Calendar	3	Update

Market

Name	Value	Change
Sensex	27,366.07	(241.75)
Nifty	8299.75	(72.88)
DOW	16,459.55	(531.14)
NASDAQ	4,706.04	(180.24)
CAC	4,630.99	(152.56)
DAX	10,124.54	(307.67)
FTSE	6,187.65	(180.24)
NIKKIE	18,996.12	(439.17)
HANG SENG	21,592.07	(817.55)
EW ALL SHARE	14754.61	26.55

Instituional Turnover

FII

Investor	Buy(Cr.)	Sale(Cr.)	Net(Cr.)
20th Aug,15	4583.50	6924.10	(2340.60)
Aug,15	61118.23	66899.09	(5780.86)
2015	782609.78	766239.43	16370.35

DII

Investor	Buy(Cr.)	Sale(Cr.)	Net(Cr.)
20th Aug,15	3028.46	1504.36	1524.10
Aug,15	26839.87	22436.53	4403.34
2015	303628.11	273522.23	30105.88

Commodity Price

Commodity/Currencies	Value	
GOLD	27216.00	↑
SILVER	36204.00	↓
CRUDEOIL	39.67	↓
COPPER	337.90	↑
NATURALGAS	178.20	↓
DOLLAR/RS.	65.83	↑
EURO/RS.	75.47	↓
POUND/RS.	103.47	↓

Market Snapshot

Top Price Performers

Top Performers 1D	% Change	Top Performers 1W	% Change	Top Performers 1M	% Change
ORISSASP	20.00	IMPEXFERRO	78.33	RUSHIL	94.59
VIDEOIND	14.94	ENERGYDEV	63.79	SANCIA	94.29
GLOBALCA	11.96	NITCO	41.88	SHRENUJ	91.84
HOTELEELA	11.69	SHRENUJ	32.48	ENERGYDEV	74.85
MEGH	10.98	JUBLINDS	28.07	IMPEXFERRO	72.58

Worst Price Performers

Worst Performers 1D	% Change	Worst Performers 1W	% Change	Worst Performers 1M	% Change
TUNITEX	(12.50)	AMTEKAUTO	(56.92)	AMTEKINDIA	(62.12)
DOLATINVES	(11.06)	AHMEDFORGE	(34.92)	AMTEKAUTO	(60.76)
FIRSTOBJ	(9.84)	TRF	(28.11)	JYOTISTRUC	(50.85)
BVCL	(9.33)	JYOTISTRUC	(26.27)	AHMEDFORGE	(46.85)
GARDENSILK	(9.24)	INFODRIVE	(23.08)	SURANAIND	(37.50)

Top News

• **Fund Action** : Kitara India Micro Cap Growth Fund bought 248,000 shares of KDDL at Rs 296.77 on the BSE.

** East Bridge Capital Master Fund Limited bought 15,467,400 shares of Hathway Cable and Datacom at Rs 45 on the NSE.

** Manphool Exports Limited sold 1,450,000 shares of Essar Shipping at Rs 20.30 on the BSE.

** Quest portfolio Services Private Limited bought 1,400,000 shares of Delta Corp at Rs 76.67 on the NSE.

• **Suzlon Energy** will issue over 4.72 crore shares worth Rs 73 crore to certain bondholders upon conversion of their bonds that are due in July 2019. These shares are being issued on conversion of 12,136 USD 546,916,000 step-up convertible Bonds of USD 1,000 each at a conversion price of Rs 15.46 per share, the company said in a regulatory filing. Suzlon has been grappling with tough business conditions amid stiff competition and global economic uncertainties.

• **GAIL India Ltd** has begun talks with Iran to revive a decade-old USD 22 billion LNG supply contract, the cheapest deal ever struck by an Indian firm. Indian state firms had on June 13, 2005 signed a Sale and Purchase Agreement (SPA) with National Iranian Gas Export Company (NIGEC) for buying 5 million tons a year of LNG on a long-term contract at very attractive price of USD 3.215 per million British thermal unit. But Tehran never honoured the deal.

• **Just Dial 's Search Plus** will be launched in September this year and monetisation from it should start by first half of FY17

Search Plus business will enable customers to carry out transactions such as booking movie tickets, ordering flowers or making doctor appointments from its directory, as well as buy various products.

• **The government** will sell 10 percent stake in Indian Oil (IOC) through an offer for sale (OFS) on today . The government is looking to raise between Rs 9,000 crore and Rs 9,500 crore in the process. The floor price is Rs 378 .

• **Future Corporate Resources Ltd**, a part of Kishore Biyani-led Future Group, has sold 2.02 percent stake in its erstwhile group firm Pantaloons Fashion & Retail .

• **Gammon India** has bagged a road project worth Rs 397 crore from the Goa government.

Construction, operation and maintenance of balance work for four laning of the stretch of NH-17B from Varunapuri to Sada Junction from KM 13.100 to KM 18.300 and elevated road cum flyover...in the state of Goa on EPC mode

• **L&T Infrastructure Development Projects (L&TIDPL)**, a subsidiary of L&T, had incorporated a wholly-owned subsidiary L&T Port Sutrapada Pvt Ltd to implement the project awarded by GMB in 2008 for setting up a greenfield sea port at Sutrapada in Gujarat on build, own, operate, transfer (BOOT) basis

• **Instituto Nacional De Estadistic y Censos said that Argentinian Economic Activity** rose to a seasonally adjusted 3.8%, from 2.2% in the preceding month.

• **Canada said that retail sales** rose to 0.6%, from 0.9% in the preceding month whose figure was revised down from 1.0%. Analysts had expected retail sales to rise 0.2% last month.

• **U.K. Public Sector Net Borrowing** fell to a seasonally adjusted -2.07B, from 8.64B in the preceding quarter whose figure was revised up from 8.58B. Analysts had expected U.K. Public Sector Net Borrowing to fall to -2.40B in the last quarter.

• **Euro Zone Services PMI** rose to 54.3, from 54.0 in the preceding quarter. Analysts had expected Euro Zone Services PMI to remain unchanged at 54.0 in the last quarter.

• **German manufacturing PMI** rose to a seasonally adjusted 53.2, from 51.8 in the preceding month. Analysts had expected German manufacturing PMI to fall to 51.7 last month.

• **French Services PMI** fell to a seasonally adjusted 51.8, from 52.0 in the preceding month. Analysts had expected French Services PMI to remain unchanged at 52.0 last month.

Economic Calendar

Country	Monday 24th Aug 15	Tuesday 25th Aug 15	Wednesday 26th Aug 15	Thursday 27th Aug 15	Friday 28th Aug 15
US		CB Consumer Confidence , New Home Sales , S&P/CS Composite-20 HPI y/y , HPI m/m .	Core Durable Goods Orders m/m ,Durable Goods Orders m/m , Crude Oil Inventories .	Prelim GDP q/q , Unemployment Claims , Prelim GDP Price Index q/q , Pending Home Sales m/m , Natural Gas Storage .	Goods Trade Balance , Core PCE Price Index m/m , Personal Spending m/m , Personal Income m/m , Revised UoM Consumer Sentiment , Revised UoM Inflation Expectations .
UK/EURO ZONE	German Ifo Business Climate	BBA Mortgage Approvals , Belgian NBB Business Climate , German Final GDP q/q , German Ifo Business Climate .	CBI Realized Sales , Nationwide HPI m/m , German 30-y Bond Auction .	German Prelim CPI m/m ,Employment Level , M3 Money Supply y/y , Private Loans y/y , Second Estimate GDP q/q , Prelim Business Investment q/q , Index of Services 3m/3m , Italian 10-y Bond Auction .	Spanish Flash CPI y/y ,German Import Prices m/m , Italian Monthly Unemployment Rate , Italian Quarterly Unemployment Rate , Italian Prelim CPI m/m
INDIA					

Narnolia Securities Ltd.

Narnolia Research Lab

Stellar IT Park | 5th Floor | Office Space No. 6 | Tower-IIInd Plot No. C-25 | Sector-62 | Noida |
Ph : 0120-4215110

Central Strategy Desk - Kolkata

124 | 1st Floor | 7/1 Lords Sinha Road | Kolkata - 71
Ph : 033-22821500 | M : 93347 14418, 98302 69810