

SGX NIFTY : 8631 (22 Pt Down)

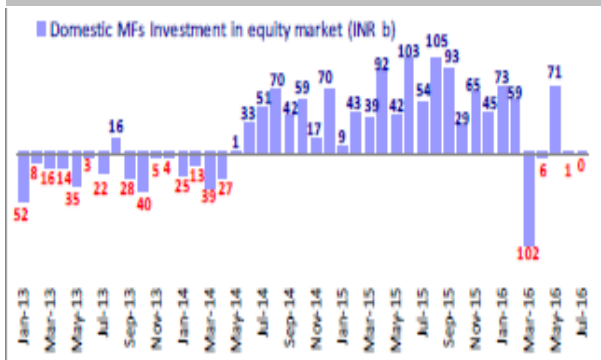
Quote of the Day

"The line separating investment and speculation, which is never bright and clear, becomes blurred still further when most market participants have recently enjoyed triumphs. Nothing sedates rationality like large doses of effortless money."

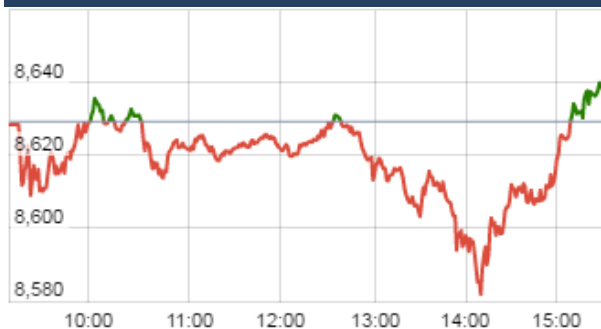
Warren Buffett

Chart of the Day

Domestic MF Investment Trend



Index Action Nifty (23th Aug 16)



Index

Contents	Page	Coverage
News	2	Update
Economic Calendar	3	Update

Market

Name	Value	Change
Sensex	27,990.21	4.67
Nifty	8629.15	(37.75)
DOW	18,690.40	16.10
NASDAQ	5,260.08	15.48
CAC	4,421.45	31.51
DAX	10,592.88	98.35
FTSE	6,868.51	39.97
NIKKEI	16,581.08	83.72
HANG SENG	22,878.68	(120.25)
EW ALL SHARE	15281.60	(15.28)

Instituional Turnover

FII

Investor	Buy(Cr.)	Sale(Cr.)	Net(Cr.)
23-Aug-16	3587.31	3587.50	(0.19)
Aug,16	71366.90	64212.13	7154.77
2016	668648.51	646201.51	22447.00

DII

Investor	Buy(Cr.)	Sale(Cr.)	Net(Cr.)
23-Aug-16	1729.99	2181.86	(451.87)
Aug,16	28256.02	33503.97	(5247.95)
2016	277587.35	278111.30	(523.95)

Commodity Price

Commodity/Currencies	Value	
GOLD	31370.00	↓
SILVER	44496.00	↓
CRUDEOIL	47.49	↑
COPPER	319.00	↑
NATURALGAS	184.10	↑
DOLLAR/RS.	67.06	↓
EURO/RS.	75.87	↑
POUND/RS.	88.51	↓

Market Snapshot

Top Price Performers

Top Performers 1D	% Change	Top Performers 1W	% Change	Top Performers 1M	% Change
PIRLIFE	20.00	JBMA	38.82	APTECHT	81.66
HOVS	19.98	SHALPAINTS	33.94	PRIMEPRO	60.00
AGARIND	19.89	APTECHT	32.10	DELTACORP	58.50
TAJGVK	13.44	BFLYGANDHI	31.78	MANDHANA	53.37
JBMA	13.15	JKIL	30.16	SHALPAINTS	52.82

Worst Performers 1D	% Change	Worst Performers 1W	% Change	Worst Performers 1M	% Change
XCHANGING	(20.00)	WELSPUNIND	(36.35)	USHERAGRO	(40.17)
WELSPUNIND	(19.99)	ISIBARS	(20.66)	RAMSARUP	(39.50)
ICIL	(14.76)	XCHANGING	(19.96)	DHARSUGAR	(38.31)
BIRLACOT	(11.11)	SAHARAHOUS	(18.47)	KEMROCK	(38.15)
WSI	(9.63)	USHERAGRO	(15.29)	UGARSUGAR	(36.79)

Top News

- **Tech Mahindra** has received approval from UK's Financial Conduct Authority for its 120 million pound acquisition of Target Group. Target Group, which provides financial services outsourcing and software, welcomes the FCA's confirmation that it has formally approved Target's acquisition by Tech Mahindra

- **Hindustan Petroleum Corp Ltd (HPCL)** and gas utility GAIL India Ltd will divest up to 50 percent stake in the Rs 30,000 crore petrochemical plant which is being set up in Andhra Pradesh . HPCL and GAIL are looking at setting up a 1 million tonnes Ethylene Derivatives plant, which will produce a wide range of petrochemical raw materials for the manufacture of detergents, paints and coatings, cosmetics, textiles and adhesives.

- **Tata Sponge Mgt Guideline** > Sponge iron ore price has risen by Rs 500-600 per tonne in the last 3-4 days.

The increase is due to expected demand from the neighbouring countries and shortage of supply there.

Company believes 50-60 percent of the price hike will reflect directly in the company's operating profits . Operating profit per tonne should improve to Rs 1,300-1,400 over the longer term and Rs 900 in the medium term

- **MAHANAGARGAS** Focus on tech innovation, capacity expansion: Mahanagar Gas

>>The company is working on a technology to combine gas and diesel for vehicles.

>>Mahanagar Gas caters to around 5 lakh vehicles in Mumbai currently and targets to increase the number to 18 lakh CNG vehicles.

- **Edelweiss Financial Services** expects the market to consolidate in the short-term as investors will remain cautious till October of this year. Investors expect liquidity squeeze in October dues to FCNR outflow from the banking sector

- **GAIL India Ltd** will divest up to 50 percent stake in the Rs 30,000 crore petrochemical plant which is being set up in Andhra Pradesh.

- **Adani Ports** is targetting a fourfold increase in capacity to 100 milion tonnes at its Dhamra port over the next four years . Adani's Ennore and Vizhinjam ports are currently under construction and will start operations in October and December respectively, Rao said. It currently has 8 operating ports. Adani is also one of the pre-qualified bidders in Bhavanapadu Port in Andhra Pradesh

- **NTPC** plans to add 5,648 megawatts (MW) of capacity in the current fiscal, says Kulamani Biswal, Director - Finance, NTPC. In FY18, the plan is to add 6,298 MW capacity. Company is usually lower in the second quarter. The plant load factor for FY17 is likely to be 81 percent. The company also plans to raise Rs 30,000 crore this fiscal. Of this Rs 20,000 crore will be raised from external sources . NTPC is interested in providing operations and maintenance services for stranded assets, but has not received any request from banks to buy such assets

- **Mgt Int : HEALTHCARE**

Expect to maintain revenue, EBITDA growth: Healthcare Global CEO

>>Mgt expects its existing centres to turn profitable in the coming days and has capex plans worth Rs 200 crore for the next two years.

- **CBI industrial trends orders** fell to -5, from -4 in the preceding month. Analysts had expected CBI industrial trends orders to fall to -9 last month.

- **The euro zone's manufacturing PMI** fell to 51.8, from 52.0 in the preceding month. Analysts had expected the euro zone's manufacturing PMI to remain unchanged at 52.0 last month.

- **Euro Zone Services PMI** rose to 53.1, from 52.9 in the preceding quarter. Analysts had expected Euro Zone Services PMI to fall to 52.8 in the last quarter.

Result Calendar Q1FY17

BSE Code	Company Name	Result Date	BSE Code	Company Name	Result Date
532749	ALLCARGO	22-Aug-16	532356	TRIVENI	26-Aug-16
500183	HFCL	22-Aug-16	532240	INDNIPPON	27-Aug-16
513599	HINDCOPPER	22-Aug-16	500207	INDORAMA	27-Aug-16
500104	HINDPETRO	22-Aug-16	520111	RATNAMANI	27-Aug-16
532624	JINDALPHOT	22-Aug-16	521206	SAMTEX	27-Aug-16
536773	JPOLYINVST	22-Aug-16	526961	TRANSFIN	27-Aug-16
532555	NTPC	22-Aug-16	500041	BANARISUG	29-Aug-16
532670	RENUKA	22-Aug-16	532927	ECLERX	29-Aug-16
500402	SPMLINFRA	22-Aug-16	532181	GMDCLTD	29-Aug-16
507815	GILLETTE	23-Aug-16	533286	MOIL	29-Aug-16
509073	HATHWAYB	23-Aug-16	506022	PRAKASH	29-Aug-16
521016	ICIL	23-Aug-16	531088	TULIPSTA	29-Aug-16
512237	JAICORPLTD	23-Aug-16	533144	COX&KINGS	30-Aug-16
532649	NECLIFE	23-Aug-16	532150	INDRAMEDCO	30-Aug-16
500400	TATAPOWER	23-Aug-16	535755	ABFRL	31-Aug-16
533154	INFINITE	24-Aug-16	532708	GVKPIL	31-Aug-16
533169	MANINFRA	24-Aug-16	506525	KANORICHEM	31-Aug-16
513023	NBVENTURES	24-Aug-16	539302	POWERMECH	31-Aug-16
540048	SPAL	24-Aug-16	508869	APOLLOHOSP	01-Sep-16
532959	GAMMNINFRA	25-Aug-16	502995	MALWACOTT	05-Sep-16
519191	JOLYMER	25-Aug-16	500110	CHENNPETRO	07-Sep-16
513250	JYOTISTRUC	25-Aug-16	506166	APIS	08-Sep-16
537573	POLYMAC	25-Aug-16	534742	ZUARI	08-Sep-16
539392	SANGFROID	25-Aug-16	500780	ZUARIGLOB	08-Sep-16
500488	ABBOTINDIA	26-Aug-16	522113	TIMKEN	09-Sep-16
500940	FINOLEXIND	26-Aug-16	534742	ZUARI	09-Sep-16
506943	JBCHEPHARM	26-Aug-16	500780	ZUARIGLOB	09-Sep-16
514034	JBFIND	26-Aug-16	531882	KWALITY	14-Sep-16
500459	PGHH	26-Aug-16	520155	STARLOG	14-Sep-16
530549	SHILPAMED	26-Aug-16	524038	VENLONENT	28-Oct-16

Economic Calendar

Country	Monday 22th Aug 16	Tuesday 23th Aug 16	Wednesday 24th Aug 16	Thursday 25th Aug 16	Friday 26th Aug 16
US	Flash Manufacturing PMI , Flash Services PMI.	Core Durable Goods Orders m/m , Durable Goods Orders m/m , New Home Sales , S&P/CS Composite- 20 HPI y/y , CB Consumer Confidence , New Home Sales .	HPI m/m , Existing Home Sales , Crude Oil Inventories .	Unemployment Claims , Natural Gas Storage .	Prelim GDP q/q , Goods Trade Balance , Prelim GDP Price Index q/q , Revised UoM Consumer Sentiment , Revised UoM Inflation Expectations .
UK/EURO ZONE	French Flash Manufacturing PMI , French Flash Services PMI , Spanish Unemployment Rate , German Constitutional Court Ruling , German Flash Manufacturing PMI , German Flash Services PMI , Flash Manufacturing PMI, Flash Services PMI , Minimum Bid Rate . ECB	GfK Consumer Confidence .	German Final GDP q/q , CBI Realized Sales , Belgian NBB Business Climate .	German Final GDP q/q , CBI Realized Sales , Belgian NBB Business Climate .	M3 Money Supply y/y , Private Loans y/y , Second Estimate GDP q/q , Prelim Business Investment q/q , Index of Services 3m/3m , Italian Prelim CPI m/m .
INDIA					

Narnolia Securities Ltd.

Narnolia Research Lab

Stellar IT Park | 5th Floor | Office Space No. 6 | Tower-IIInd Plot
No. C-25 | Sector-62 | Noida | Ph : 0120-4215110

Narnolia Securities Ltd.

201 | 2nd Floor | Marble Arch Building | 236B-AJC Bose Road Kolkata-
700 020 Ph : 033-40501500
Email : narnolia@narnolia.com website :www.narnolia.com