

SGX NIFTY : 8707 (5 Pt Up)

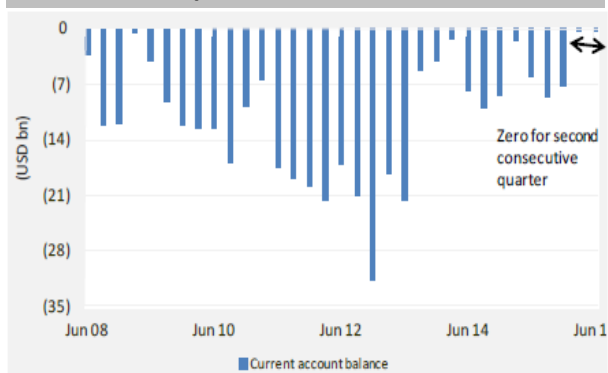
Quote of the Day

"Although I consider myself to be primarily in the quantitative school, the really sensational ideas I have had over the years have been heavily weighted toward the qualitative side where I have had a 'high-probability insight'. This is what causes the cash register to really sing."

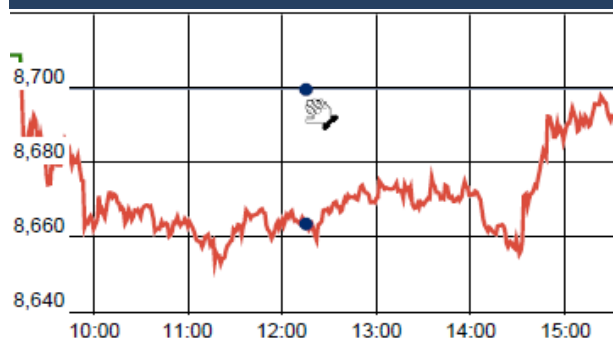
Warren Buffett

Chart of the Day

Capital Account Balance



Index Action Nifty (21th Oct 16)



Index

Contents	Page	Coverage
News	2	Update
Economic Calendar	3	Update

Market

Name	Value	Change
Sensex	28,077.18	(52.66)
Nifty	8693.05	(6.35)
DOW	18,145.71	(16.64)
NASDAQ	5,257.40	15.57
CAC	4,536.07	(4.05)
DAX	10,710.15	9.34
FTSE	7,020.47	(6.43)
NIKKEI	17,192.84	8.25
HANG SENG	23,311.75	(62.65)
EW ALL SHARE	15756.33	(14.18)

Instituional Turnover

FII

Investor	Buy(Cr.)	Sale(Cr.)	Net(Cr.)
21-Oct-16	3501.42	3774.33	(272.91)
Oct,16	3745.10	3710.88	34.22
2016	792213.32	767326.21	24887.11

DII

Investor	Buy(Cr.)	Sale(Cr.)	Net(Cr.)
21-Oct-16	2517.59	2017.22	500.37
Oct,16	2479.59	2281.57	198.02
2016	337624.94	338286.76	(661.82)

Commodity Price

Commodity/Currencies	Value	
GOLD	29946.00	↑
SILVER	41958.00	↓
CRUDEOIL	49.21	↑
COPPER	310.95	↓
NATURALGAS	201.00	↓
DOLLAR/RS.	66.89	↑
EURO/RS.	72.80	↓
POUND/RS.	81.78	↓

Market Snapshot

Top Price Performers

Top Performers 1D	% Change	Top Performers 1W	% Change	Top Performers 1M	% Change
JAYBARMARU	20.00	KELLTONTEC	38.69	REMIMETAL	98.75
SATHAISPAT	19.96	CAPPL	37.48	PRIMESECU	97.47
ANGIND	19.94	JAYAGROGN	37.46	CALSREF	87.50
BSELINFRA	19.94	CALSREF	36.36	JSL	87.25
SELMCL	19.94	ARIHANT	35.43	PRITI	84.62

Worst Performers 1D	% Change	Worst Performers 1W	% Change	Worst Performers 1M	% Change
KSLIND	(9.17)	RAINBOWPAP	(18.25)	BHARTISHIP	(37.46)
AROGANITE	(8.73)	PATELENG	(17.35)	MANDHANA	(30.57)
PANCHMSTEL	(7.23)	INDINFO	(16.67)	KANANIIND	(29.29)
FOSECOIND	(6.93)	KAJARIACER	(15.04)	MONOT	(24.70)
KAJARIACER	(6.72)	GNRL	(14.16)	GTOFFSHORE	(24.02)

Top News

- Indiabulls Housing Finance Mgt Guideline** : The aim to reduce bank borrowings below 40 percent by FY18 is already achieved . Indiabulls has a balance sheet size of Rs 91,000 crore, of which around 25 percent is cash balance. Banga expects the balance sheet size to rise to Rs 1 lakh crore by the end of current fiscal. The cost of funds for the company declined by 25 basis points in the second quarter . The company's net profits rose 23 percent in the second quarter of FY17 year-on-year at Rs 684 crore.

- NBCC Mgt Guideline** : As a part of its divestment drive the government announced that it will sell 15 percent of its stake in construction company NBCC . the company's current orderbook stands at Rs 73,000 crore which will be executed over the next 5 years. NBCC has the responsibility to develop 10 railway stations which will be a part of the redevelopment projects. On the divestment front he said that the government is not planning to sell more than 15 percent as of now.

- DB Corp Mgt Guideline** : With good monsoon and positive market response the company expects the momentum to continue over the next six months . DB Corp's other expenses reduced by 14 percent in the second quarter on account of gains made from radio business and from provisions taken in the previous years

- Biocon Mgt Guideline** : Company is expecting growth to come from its main biosimilars business and not the US generics business . Q2 performance was boosted by delivery of small molecular business. In Q2, the most significant milestone was the tentative nod for Rosuvastatin Generic. The company booked Rs 32 crore licensing income pertaining to biosimilars. Biosimilars are seeing a good uptick in emerging markets.

• Mgt Int : KPIT

- >>Expect to achieve 15-16% margin in next few quarters.
- >>Automotive will continue to do well (Seeing tractions there).
- >>Seeing some growth coming back in Energy utilities segment.
- >>Enough opportunity to grow in Europe.
- >>Pipeline looks strong.

- Apollo Tyres** is setting up Europe's largest greenfield plant in Hungary with an investment of 475 million euros to produce nearly 62 lakh tyres for passenger cars and heavy commercial vehicles per annum. The facility at Gyongyosalasz, located less than 100 km from here, will start production early next year and it will produce tyres to cater to the entire European market.

- Reliance Industries** , operator of the world's biggest oil-refining complex, has forayed into cooking gas retailing, launching a 4-kg LPG cylinder on pilot basis. Four-kg LPG cylinder launched in 4 districts on pilot basis . LPG consumption is growing by over 10 per cent and private refiners RIL and Essar Oil want a die of it.

- Tata Motors** is lining up a slew of new products, including a compact SUV, premium hatchback and an executive sedan. Targetting to become the third biggest passenger vehicle maker in India by 2019-20 after Maruti Suzuki and Hyundai, homegrown auto major Tata Motors is lining up a slew of new products, including a compact SUV, premium hatchback and an executive sedan.

- Belgium NBB Business Climate** rose to -1.8, from -2.2 in the preceding quarter. Analysts had expected Belgium NBB Business Climate to rise to -1.5 in the last quarter.

- Canadian consumer price inflation** rose to 0.1% on a monthly basis and before seasonal adjustment, from -0.2% in the preceding month. Analysts had expected Canadian consumer price inflation to rise 0.2% last month.

- U.K. Public Sector Net Borrowing** fell to a seasonally adjusted 10.12B, from 10.33B in the preceding quarter whose figure was revised up from 10.05B. Analysts had expected U.K. Public Sector Net Borrowing to fall to 8.20B in the last quarter.

- U.S. Natural Gas Storage** rose to a seasonally adjusted annual rate of 77B, from 79B in the preceding month. Analysts had expected U.S. Natural Gas Storage to rise 73B last month.

Result Calendar Q2FY17

BSE Code	Company Name	Date	BSE Code	Company Name	Date
512599	ADANIENT	24-Oct-16	524727	SPANDIAQ	24-Oct-16
533096	ADANIPOWER	24-Oct-16	533110	SPSL	24-Oct-16
539254	ADANITRANS	24-Oct-16	500405	SUPPETRO	24-Oct-16
530117	ADIFINCHM	24-Oct-16	500407	SWARAJENG	24-Oct-16
523120	ADORMUL	24-Oct-16	513434	TATAMETALI	24-Oct-16
517041	ADORWELD	24-Oct-16	539871	THYROCARE	24-Oct-16
513349	AJMERA	24-Oct-16	531390	UPSURGE	24-Oct-16
538713	ATISHAY	24-Oct-16	512205	VATSAEDU	24-Oct-16
532215	AXISBANK	24-Oct-16	505412	WENDT	24-Oct-16
530999	BALAMINES	24-Oct-16	532921	ADANIPOINTS	25-Oct-16
511501	BHARAT	24-Oct-16	532056	ADIEXRE	25-Oct-16
532974	BIRLAMONEY	24-Oct-16	533573	APLLTD	25-Oct-16
511505	CAPITALT	24-Oct-16	500101	ARVIND	25-Oct-16
506365	CHEMOPH	24-Oct-16	500820	ASIANPAINT	25-Oct-16
533167	COROENGG	24-Oct-16	522005	AUSTENG	25-Oct-16
512127	ETPCORP	24-Oct-16	522004	BATLIBOI	25-Oct-16
532764	GEECEE	24-Oct-16	503960	BBL	25-Oct-16
526797	GREENPLY	24-Oct-16	532454	BHARTIARTL	25-Oct-16
500690	GSFC	24-Oct-16	512313	BIJLTEX	25-Oct-16
517372	GUJINTRX	24-Oct-16	538786	CIL	25-Oct-16
532832	IBREALEST	24-Oct-16	524506	CORALAB	25-Oct-16
532822	IDEA	24-Oct-16	531556	CORALFINAC	25-Oct-16
533047	IMFA	24-Oct-16	539876	CROMPTON	25-Oct-16
509162	INDAG	24-Oct-16	532099	DATABASE	25-Oct-16
534816	INFRATEL	24-Oct-16	532760	DEEPIND	25-Oct-16
511609	ISLCONSUL	24-Oct-16	532848	DELTACORP	25-Oct-16
523398	JCHAC	24-Oct-16	507886	DHRUVES	25-Oct-16
534659	JOINTECAED	24-Oct-16	500124	DRREDDY	25-Oct-16
530701	KDJHRL	24-Oct-16	532707	DYNPRO	25-Oct-16
524019	KINGFA	24-Oct-16	500123	ELANTAS	25-Oct-16
500245	KIRLFER	24-Oct-16	524768	EMMESSA	25-Oct-16
532889	KPRMILL	24-Oct-16	533477	ENKEIWHEL	25-Oct-16
512455	LLOYDSME	24-Oct-16	500246	ENVAIREL	25-Oct-16
532756	MAHINDCIE	24-Oct-16	500469	FEDERALBNK	25-Oct-16
531319	MARUTISE	24-Oct-16	526227	FILATEX	25-Oct-16
511766	MUTHFTN	24-Oct-16	538568	FRUTION	25-Oct-16
531289	NATFIT	24-Oct-16	513108	GANDHITUBE	25-Oct-16
532504	NAVINFLUOR	24-Oct-16	532312	GEOMETRIC	25-Oct-16
500162	PARRYSUGAR	24-Oct-16	500174	GLFL	25-Oct-16
537839	PHOENIXTN	24-Oct-16	505576	GOLDCORP	25-Oct-16
500355	RALLIS	24-Oct-16	532482	GRANULES	25-Oct-16
500111	RELCAPITAL	24-Oct-16	518029	GSCLCEMENT	25-Oct-16
532661	RML	24-Oct-16	500180	HDFCBANK	25-Oct-16
532785	RUCHIRA	24-Oct-16	532129	HEXAWARE	25-Oct-16
502175	SAURASHCEM	24-Oct-16	532960	IBVENTURES	25-Oct-16
524336	SHHARICH	24-Oct-16	540133	ICICIPRULI	25-Oct-16
505827	SNL	24-Oct-16	500116	IDBI	25-Oct-16

539437	IDFCBANK	25-Oct-16	511601	YASHMGM	25-Oct-16
507438	IFBAGRO	25-Oct-16	505537	ZEEL	25-Oct-16
507981	JINDHOT	25-Oct-16	512587	ZODJRDMKJ	25-Oct-16
504080	JSLINDL	25-Oct-16	531335	ZYDUSWELL	25-Oct-16
532926	JYOTHYLAB	25-Oct-16	532331	AJANTPHARM	26-Oct-16
523207	KOKUYOCMLN	25-Oct-16	521097	AMARJOTHI	26-Oct-16
500247	KOTAKBANK	25-Oct-16	500012	ANDHRAPET	26-Oct-16
511138	KOTHARIFIN	25-Oct-16	500016	ARUNAHTEL	26-Oct-16
500249	KSBPUMPS	25-Oct-16	539301	ARVINFRA	26-Oct-16
511728	KZLFIN	25-Oct-16	526847	ASHSI	26-Oct-16
533519	L&T;TFH	25-Oct-16	532888	ASIANILES	26-Oct-16
532720	M&M;MFIN	25-Oct-16	508933	AYMSYNTEX	26-Oct-16
515059	MADHUDIN	25-Oct-16	531340	BERVINL	26-Oct-16
500264	MAFATIND	25-Oct-16	524663	BIBCL	26-Oct-16
500248	MAVIIND	25-Oct-16	532290	BLBLIMITED	26-Oct-16
534091	MCX	25-Oct-16	506197	BLISSGVS	26-Oct-16
532865	MEGH	25-Oct-16	500074	BPL	26-Oct-16
532621	MORARJEE	25-Oct-16	532321	CADILAHC	26-Oct-16
532440	MPSLTD	25-Oct-16	532483	CANBK	26-Oct-16
532200	MYSOREBANK	25-Oct-16	506395	COROMANDEL	26-Oct-16
539015	ORTEL	25-Oct-16	500480	CUMMINSIND	26-Oct-16
523642	PIIND	25-Oct-16	500096	DABUR	26-Oct-16
532979	PIRPHYTO	25-Oct-16	533309	DALMIABHA	26-Oct-16
531273	RADHEDE	25-Oct-16	506401	DEEPAKNI	26-Oct-16
532987	RBL	25-Oct-16	526783	DRAGARWQ	26-Oct-16
532699	ROHLTD	25-Oct-16	533208	EMAMIPAP	26-Oct-16
512309	ROSETEX	25-Oct-16	532511	EXCELCROP	26-Oct-16
523025	SAFARIND	25-Oct-16	500086	EXIDEIND	26-Oct-16
539682	SESL	25-Oct-16	502865	FORBESCO	26-Oct-16
531431	SHAKTIPUMP	25-Oct-16	509546	GRAVISSHO	26-Oct-16
538685	SHEMAROO	25-Oct-16	508486	HAWKINCOOK	26-Oct-16
511218	SRTRANSFIN	25-Oct-16	500010	HDFC	26-Oct-16
513517	STEELCAS	25-Oct-16	500182	HEROMOTOCO	26-Oct-16
506003	SUDAI	25-Oct-16	500189	HINDUJAVEN	26-Oct-16
531433	SUNGOLD	25-Oct-16	500696	HINDUNILVR	26-Oct-16
531638	SURAJLTD	25-Oct-16	532636	IIFL	26-Oct-16
522215	SWISSGLA	25-Oct-16	504741	INDIANHUME	26-Oct-16
511447	SYLPH	25-Oct-16	532612	INDOCO	26-Oct-16
517385	SYMPHONY	25-Oct-16	532717	INDOTECH	26-Oct-16
501301	TATAINVEST	25-Oct-16	504786	INVPRECQ	26-Oct-16
531190	TAVERNIER	25-Oct-16	502330	IPAPPM	26-Oct-16
539488	TFLL	25-Oct-16	500875	ITC	26-Oct-16
504966	TINPLATE	25-Oct-16	500380	JKLAKSHMI	26-Oct-16
532410	TRANSCOR	25-Oct-16	533148	JSWENERGY	26-Oct-16
512117	TWIROST	25-Oct-16	533155	JUBLFOOD	26-Oct-16
512511	VARUNME	25-Oct-16	535648	JUSTDIAL	26-Oct-16
509055	VISAKAIND	25-Oct-16	506184	KANANIIND	26-Oct-16
532893	VTMLTD	25-Oct-16	500241	KIRLOSIBROS	26-Oct-16
532144	WELCORP	25-Oct-16	531164	LADIAMO	26-Oct-16

531842	LAHOTIOV	26-Oct-16	503722	BANSWRAS	27-Oct-16
500252	LAXMIMACH	26-Oct-16	500049	BEL	27-Oct-16
500266	MAHSCOOTER	26-Oct-16	511698	BHAGYFN	27-Oct-16
505324	MANUGRAPH	26-Oct-16	505688	BHARATGEAR	27-Oct-16
505336	MIRCH	26-Oct-16	500059	BINANIIND	27-Oct-16
539594	MISHTANN	26-Oct-16	535620	BINNYMILLS	27-Oct-16
503772	MODWOOL	26-Oct-16	500069	BNKCAP	27-Oct-16
532892	MOTILALOFS	26-Oct-16	533108	BTTL	27-Oct-16
520043	MUNJALSHOW	26-Oct-16	500870	CASTROLIND	27-Oct-16
530697	NEELKATEC	26-Oct-16	511243	CHOLAFIN	27-Oct-16
502165	OCL	26-Oct-16	531067	CONTILI	27-Oct-16
500314	ORIENTHOT	26-Oct-16	530843	CUPID	27-Oct-16
532366	PNBGILTS	26-Oct-16	532173	CYBERTECH	27-Oct-16
531265	PROGRESV	26-Oct-16	500097	DALMIASUG	27-Oct-16
514223	RAMGOPOLY	26-Oct-16	523367	DCMSHRIRAM	27-Oct-16
537840	RAUNAQEPC	26-Oct-16	590031	DENORA	27-Oct-16
500330	RAYMOND	26-Oct-16	532526	DISHMAN	27-Oct-16
532915	RELIGARE	26-Oct-16	531471	DUKEOFS	27-Oct-16
532735	RSYSTEMINT	26-Oct-16	531162	EMAMILTD	27-Oct-16
506642	SADHNANIQ	26-Oct-16	526574	ENTRINT	27-Oct-16
502090	SAGCEM	26-Oct-16	523754	EPCIN	27-Oct-16
532191	SBT	26-Oct-16	500495	ESCORTS	27-Oct-16
524546	SHABCHM	26-Oct-16	500033	FORCEMOT	27-Oct-16
522034	SHANTIGEAR	26-Oct-16	532809	FSL	27-Oct-16
531201	SHILCTECH	26-Oct-16	531854	FUNWTRD	27-Oct-16
532143	SKMEGGPROD	26-Oct-16	532726	GALLANTT	27-Oct-16
532419	SMARTLINK	26-Oct-16	526073	GALXBRG	27-Oct-16
531548	SOMANYCERA	26-Oct-16	531953	GCCL	27-Oct-16
531359	SRAMSET	26-Oct-16	531375	GCCLINP	27-Oct-16
512527	SUPER	26-Oct-16	500660	GLAXO	27-Oct-16
532276	SYNDIBANK	26-Oct-16	532296	GLENMARK	27-Oct-16
500413	THOMASCOOK	26-Oct-16	539515	GMLM	27-Oct-16
500420	TORNTPHARM	26-Oct-16	532630	GOKEX	27-Oct-16
511730	TRCFIN	26-Oct-16	511441	GUJCRED	27-Oct-16
502281	TRIVENIGQ	26-Oct-16	530141	GYANDEV	27-Oct-16
511371	VATCO	26-Oct-16	500185	HCC	27-Oct-16
538382	WESTLEIRES	26-Oct-16	526899	HIMIN	27-Oct-16
501386	ZSWASTSA	26-Oct-16	500186	HINDOILEXP	27-Oct-16
500002	ABB	27-Oct-16	505726	IFBIND	27-Oct-16
531161	ABMKNO	27-Oct-16	532414	IKFTECH	27-Oct-16
539056	ADLABS	27-Oct-16	526887	INDOCRED	27-Oct-16
537292	AGRITECH	27-Oct-16	532706	INOXLEISUR	27-Oct-16
526833	ANNTHMS	27-Oct-16	531314	INTCAPM	27-Oct-16
509367	APTANN	27-Oct-16	530965	IOC	27-Oct-16
533138	ASTEC	27-Oct-16	532771	JHS	27-Oct-16
505029	ATLASCYCLE	27-Oct-16	532162	JKPAPER	27-Oct-16
532978	BAJAJFINSV	27-Oct-16	506522	JLMORI	27-Oct-16
500034	BAJFINANCE	27-Oct-16	500228	JSWSTEEL	27-Oct-16
526849	BANARBEADS	27-Oct-16	530019	JUBILANT	27-Oct-16

590003	KARURVYSYA	27-Oct-16	526576	TECHIN	27-Oct-16
539276	KAYA	27-Oct-16	532755	TECHM	27-Oct-16
507948	KEYCORP	27-Oct-16	505400	TEXINFRA	27-Oct-16
532732	KKCL	27-Oct-16	533326	TEXRAIL	27-Oct-16
507598	KLRF	27-Oct-16	531652	THIRDFIN	27-Oct-16
539686	KPEL	27-Oct-16	511559	TIMESGTY	27-Oct-16
504258	LAKSELEC	27-Oct-16	532779	TORNTPOWER	27-Oct-16
532313	MAHLIFE	27-Oct-16	506680	TRELCH-B	27-Oct-16
521018	MARALOVER	27-Oct-16	500251	TRENT	27-Oct-16
532500	MARUTI	27-Oct-16	532948	TULSI	27-Oct-16
531727	MENNPIS	27-Oct-16	511096	TVOLCON	27-Oct-16
539767	MNIL	27-Oct-16	532343	TVSMOTOR	27-Oct-16
503015	MODERN	27-Oct-16	539798	UMIYA	27-Oct-16
509760	MODRNSH	27-Oct-16	532432	UNITDSPR	27-Oct-16
533080	MOLDTKPAC	27-Oct-16	531762	UNJHAFOR	27-Oct-16
532407	MOSCHIP	27-Oct-16	531894	VATSAMUS	27-Oct-16
500290	MRF	27-Oct-16	532401	VIJAYABANK	27-Oct-16
515037	MURUDCERA	27-Oct-16	539118	VRLLG	27-Oct-16
524654	NATCAPSUQ	27-Oct-16	538268	WONDERLA	27-Oct-16
537291	NATHBIOGEN	27-Oct-16	505872	WPIL	27-Oct-16
502407	NATHPULP	27-Oct-16	532794	ZEEMEDIA	27-Oct-16
532777	NAUKRI	27-Oct-16	509046	ZLEENCON	27-Oct-16
504112	NELCO	27-Oct-16	511359	ADMANUM	28-Oct-16
520021	OMAXAUTO	27-Oct-16	505216	ALFREDHE	28-Oct-16
500312	ONGC	27-Oct-16	533029	ALKALI	28-Oct-16
504093	PANAENERG	27-Oct-16	506767	ALKYLAMINE	28-Oct-16
500302	PEL	27-Oct-16	531761	AMULEAS	28-Oct-16
501144	PEOPLIN	27-Oct-16	512091	ANSHNCO	28-Oct-16
539354	POLYSPIN	27-Oct-16	520119	ASAL	28-Oct-16
531870	POPULARES	27-Oct-16	512247	ASHCAP	28-Oct-16
532934	PPAP	27-Oct-16	512573	AVANTI	28-Oct-16
526109	PRICOL	27-Oct-16	512109	AVIVA	28-Oct-16
530695	PRIMEPRO	27-Oct-16	532977	BAJAJ-AUTO	28-Oct-16
590120	PROVEST	27-Oct-16	500490	BAJAJHLDNG	28-Oct-16
532689	PVR	27-Oct-16	524687	BASANTGL	28-Oct-16
532805	REDINGTON	27-Oct-16	539120	BFFL	28-Oct-16
520075	SAMKRG	27-Oct-16	533228	BHARATFIN	28-Oct-16
526885	SARLAPOLY	27-Oct-16	531175	BLSINFOTE	28-Oct-16
532663	SASKEN	27-Oct-16	513375	CARBORUNIV	28-Oct-16
507894	SCHABLON	27-Oct-16	500040	CENTURYTEX	28-Oct-16
530797	SHGANEL	27-Oct-16	511696	CHRTDCA	28-Oct-16
532498	SHRIRAMCIT	27-Oct-16	521210	CITYMAN	28-Oct-16
539584	SIPTL	27-Oct-16	531210	COLINZ	28-Oct-16
514197	STCORP	27-Oct-16	500830	COLPAL	28-Oct-16
516108	STHINPA	27-Oct-16	532456	COMPUAGE	28-Oct-16
532374	STRTECH	27-Oct-16	507833	COMPUPN	28-Oct-16
509930	SUPREMEIND	27-Oct-16	540047	DBL	28-Oct-16
533101	SURYAAMBA	27-Oct-16	530393	DBSTOCKBRO	28-Oct-16
500408	TATAELXSI	27-Oct-16	500089	DICIND	28-Oct-16

532839	DISHTV	28-Oct-16	517168	SUBROS	28-Oct-16
505200	EICHERMOT	28-Oct-16	530883	SUCROSA	28-Oct-16
509525	EMPIND	28-Oct-16	501110	SUNRINV	28-Oct-16
533213	FRONTSEC	28-Oct-16	530677	SUPREME	28-Oct-16
534063	FUTSOL	28-Oct-16	510245	SWASTIVI	28-Oct-16
511676	GICHSGFIN	28-Oct-16	531003	SWRNASE	28-Oct-16
531600	GOGIACAP	28-Oct-16	532371	TTML	28-Oct-16
500300	GRASIM	28-Oct-16	533644	UJAAS	28-Oct-16
507960	GUJHOTE	28-Oct-16	500429	UNIPHOS	28-Oct-16
500179	HCL-INSYS	28-Oct-16	521226	UNIROYAL	28-Oct-16
519552	HERITGFOOD	28-Oct-16	512070	UPL	28-Oct-16
522073	HITECHGEAR	28-Oct-16	532156	VAIBHAVGBL	28-Oct-16
500449	HOCL	28-Oct-16	500295	VEDL	28-Oct-16
532659	IDFC	28-Oct-16	524038	VENLONENT	28-Oct-16
517077	INDAGIV	28-Oct-16	505533	WESTLIFE	28-Oct-16
539083	INOXWIND	28-Oct-16	512245	ZNIVITRD	28-Oct-16
500213	ITHL	28-Oct-16	533758	APLAPOLLO	29-Oct-16
523405	JMFINANCIL	28-Oct-16	590122	ASHIKACR	29-Oct-16
533320	JUBLINDS	28-Oct-16	531203	BRANDREAL	29-Oct-16
500165	KANSAINER	28-Oct-16	530427	CHOKSI	29-Oct-16
508993	KEDIACN	28-Oct-16	504256	DELTRON	29-Oct-16
502150	KLYNCEM	28-Oct-16	517437	DUTRON	29-Oct-16
517463	LINAKS	28-Oct-16	530405	JINDCAP	29-Oct-16
505320	LYNMC	28-Oct-16	532644	JKCEMENT	29-Oct-16
523792	MAZDALTD	28-Oct-16	530243	MANGASOF	29-Oct-16
533088	MHRIL	28-Oct-16	530537	MANRAJH	29-Oct-16
526570	MIDWEST	28-Oct-16	531221	MAYURFL	29-Oct-16
500890	MODIRUBBER	28-Oct-16	538890	MKEXIM	29-Oct-16
539016	NEIL	28-Oct-16	526831	NAINAMS	29-Oct-16
500452	NEPCAGRO	28-Oct-16	521009	NIWASSP	29-Oct-16
500301	NEPCMICON	28-Oct-16	514460	OSWAYRN	29-Oct-16
531077	NEPCPAPER	28-Oct-16	519230	RICHIRICH	29-Oct-16
521192	NEPCTEX	28-Oct-16	531169	SKPSEC	29-Oct-16
500790	NESTLEIND	28-Oct-16	507753	SREERAYA	29-Oct-16
508875	NITINALOY	28-Oct-16	530565	SSLFINANCE	29-Oct-16
516082	NRAGRINDQ	28-Oct-16	513488	SSWRL	29-Oct-16
532555	NTPC	28-Oct-16	524200	VINATIORGA	29-Oct-16
533399	PARAPRINT	28-Oct-16	517399	VXLINSTR	29-Oct-16
511702	PARSHINV	28-Oct-16	526187	ASHRAM	31-Oct-16
519439	PIONAGR	28-Oct-16	532493	ASTRAMICRO	31-Oct-16
526009	PROCAL	28-Oct-16	530705	FLORATX	31-Oct-16
532826	RAJTV	28-Oct-16	530389	GEEFC	31-Oct-16
502587	RAMAPULP	28-Oct-16	503689	HEALINV	31-Oct-16
531539	RISHDIGA	28-Oct-16	532041	HINDBIO	31-Oct-16
590051	SAKSOFT	28-Oct-16	538838	ICL	31-Oct-16
519031	SHAHFOOD	28-Oct-16	530915	JRFOODS	31-Oct-16
522152	SOLIMAC	28-Oct-16	521248	KITEX	31-Oct-16
532872	SPARC	28-Oct-16	530139	KREONFIN	31-Oct-16
532531	STAR	28-Oct-16	530441	MAHAN	31-Oct-16

519262	PRIMAGR	31-Oct-16	539524	LALPATHLAB	03-Nov-16
531246	PRIMAIN	31-Oct-16	507912	LKPFIN	03-Nov-16
539435	RFSL	31-Oct-16	517449	MAGNAELQ	03-Nov-16
511403	SAIJEEV	31-Oct-16	522241	MMFL	03-Nov-16
514454	SOUTLAT	31-Oct-16	526299	MPHASIS	03-Nov-16
538876	STSERV	31-Oct-16	532441	RAINBOWDQ	03-Nov-16
590071	SUNDARMFIN	31-Oct-16	500358	RAMAPETRO	03-Nov-16
517201	SWITCHTE	31-Oct-16	532638	SHOPERSTOP	03-Nov-16
521228	TATIAGLOB	31-Oct-16	502180	SHREDIGCEM	03-Nov-16
531279	TRISHAKT	31-Oct-16	520056	SUNCLAYLTD	03-Nov-16
503671	UNIJOLL	31-Oct-16	521180	SUPERSPIN	03-Nov-16
538873	WINYCOMM	31-Oct-16	501242	TCIFINANCE	03-Nov-16
511339	APPLECREDIT	01-Nov-16	533553	TDPOWERSYS	03-Nov-16
500280	CENTENKA	01-Nov-16	533158	THANGAMAYL	03-Nov-16
540124	GNA	01-Nov-16	517506	TTKPRESTIG	03-Nov-16
533217	HMVL	01-Nov-16	507808	UNTTEMI	03-Nov-16
519602	KELLTONTEC	01-Nov-16	590073	WHEELS	03-Nov-16
539289	MJCO	01-Nov-16	507525	AMRITCORP	04-Nov-16
540132	SABRIMALA	01-Nov-16	526125	ARHNTTO	04-Nov-16
509966	VSTIND	01-Nov-16	534804	CARERATING	04-Nov-16
530469	GSLSEC	02-Nov-16	523127	EIHAHOTELS	04-Nov-16
509597	HARDCAS	02-Nov-16	532345	GATI	04-Nov-16
590043	HARITASEAT	02-Nov-16	534328	HEXATRADEX	04-Nov-16
532662	HTMEDIA	02-Nov-16	500378	JINDALSAW	04-Nov-16
511208	IVC	02-Nov-16	516078	JUMBO	04-Nov-16
507260	ODHSUG	02-Nov-16	533192	KCPSUGIND	04-Nov-16
526247	PREMEXPLQ	02-Nov-16	518011	KEERTHI	04-Nov-16
515043	SAINTGOBAIN	02-Nov-16	500239	KGDENIM	04-Nov-16
512014	SOBME	02-Nov-16	502958	LAKSHMIMIL	04-Nov-16
532221	SONATSOFTW	02-Nov-16	524558	NEULANDLAB	04-Nov-16
521113	SUDTIND-B	02-Nov-16	538860	PANAFIC	04-Nov-16
500403	SUNDRMFAST	02-Nov-16	532460	PONNIERODE	04-Nov-16
532390	TAJGVK	02-Nov-16	512618	RLF	04-Nov-16
531846	TRINITYLEA	02-Nov-16	502450	SESHAPAPER	04-Nov-16
532513	TVSELECT	02-Nov-16	526161	SPENTA	04-Nov-16
530505	UPERGANGES	02-Nov-16	539217	SRESTHA	04-Nov-16
500425	AMBUJACEM	03-Nov-16	518053	SRICC	04-Nov-16
509480	BERGEPAIN	03-Nov-16	532349	TCI	04-Nov-16
531458	BOSTONBIO	03-Nov-16	500114	TITAN	04-Nov-16
531270	DAZZEL	03-Nov-16	505854	TRF	04-Nov-16
512068	DECNGOLD	03-Nov-16	500008	AMARAJABAT	05-Nov-16
500840	EIHOTEL	03-Nov-16	530457	CINERAD	05-Nov-16
500133	ESABINDIA	03-Nov-16	501455	GREAVESCOT	05-Nov-16
532285	GEOJITBNPP	03-Nov-16	522064	HONDAPOWER	05-Nov-16
531399	GGAUTO	03-Nov-16	519606	INTEGFD	05-Nov-16
506076	GRINDWELL	03-Nov-16	524699	KILBURN	05-Nov-16
524754	GUJMEDI	03-Nov-16	537800	MANGIND	05-Nov-16
532835	ICRA	03-Nov-16	502157	MANGLMCEM	05-Nov-16
538835	INTELLECT	03-Nov-16	524709	NAGAAGRI	05-Nov-16

506532	NITTAGELA	05-Nov-16	519174	ASHAI	09-Nov-16
504132	PERMAGN	05-Nov-16	524742	CAPPL	09-Nov-16
532461	PNB	05-Nov-16	523489	CMMHOSP	09-Nov-16
531869	SACHEMT	05-Nov-16	520131	COARO	09-Nov-16
524667	SOTL	05-Nov-16	521220	DAMOINDUS	09-Nov-16
530759	STERTOOLS	05-Nov-16	530779	DYNAMICP	09-Nov-16
530419	SUMEDHA	05-Nov-16	523708	EIMCOELECO	09-Nov-16
539132	VEGETABLE	05-Nov-16	531278	ELIXIR	09-Nov-16
524598	AKSCHEM	07-Nov-16	517477	ELNET	09-Nov-16
532633	ALLSEC	07-Nov-16	531599	FDC	09-Nov-16
532853	ASAHISONG	07-Nov-16	533150	GODREJPROP	09-Nov-16
500825	BRITANNIA	07-Nov-16	501298	INDPRUD	09-Nov-16
514045	BSL	07-Nov-16	500257	LUPIN	09-Nov-16
532927	ECLERX	07-Nov-16	513496	MEWATZI	09-Nov-16
503681	ELCIDIN	07-Nov-16	532097	MUKANDENGG	09-Nov-16
500141	FERROALL	07-Nov-16	532254	POLARIS	09-Nov-16
532424	GODREJCP	07-Nov-16	530331	PREMCO	09-Nov-16
532015	GRAVITY	07-Nov-16	500260	RAMCOCEM	09-Nov-16
532174	ICICIBANK	07-Nov-16	530073	SANGHVIMOV	09-Nov-16
526179	LUDLOWJUT	07-Nov-16	512153	SPECMKT	09-Nov-16
500354	RAJSREESUG	07-Nov-16	530931	STANPACK	09-Nov-16
505368	REVATHI	07-Nov-16	524542	SUKHJITS	09-Nov-16
530271	RICHUNV	07-Nov-16	530795	SUNCITYSY	09-Nov-16
509874	SHALPAINTS	07-Nov-16	534369	TBZ	09-Nov-16
500387	SHREECEM	07-Nov-16	526775	VALIANT	09-Nov-16
521234	SRINACHA	07-Nov-16	500303	ABIRLANUVO	10-Nov-16
539353	SWARAJAUTO	07-Nov-16	508939	BLCISER	10-Nov-16
501425	BBTC	08-Nov-16	500067	BLUESTARCO	10-Nov-16
500020	BOMDYEING	08-Nov-16	511742	CHOKSEC	10-Nov-16
531608	GORANIN	08-Nov-16	526737	CORPOCO	10-Nov-16
506879	GUJTHEM	08-Nov-16	522261	DOLPHINOFF	10-Nov-16
532851	INSECTICID	08-Nov-16	505700	ELECON	10-Nov-16
505737	INTLCOMBQ	08-Nov-16	500144	FINCABLES	10-Nov-16
538539	JTAPARIA	08-Nov-16	500670	GNFC	10-Nov-16
530443	KIRANSY-B	08-Nov-16	531737	GREENCREST	10-Nov-16
513179	NATNLSTEEL	08-Nov-16	511543	GSBFIN	10-Nov-16
531272	NIKKIGL	08-Nov-16	514386	GUJCOTEX	10-Nov-16
532808	PGIL	08-Nov-16	526779	HINAFIL	10-Nov-16
500346	PUNJCOMMU	08-Nov-16	511092	JMDTELEFILM	10-Nov-16
505807	ROLCOEN	08-Nov-16	505750	JOSTS	10-Nov-16
538875	SELLWIN	08-Nov-16	526947	LAOPALA	10-Nov-16
538975	SHREESEC	08-Nov-16	531213	MANAPPURAM	10-Nov-16
505192	SMLISUZU	08-Nov-16	517334	MOTHERSUMI	10-Nov-16
526827	SPICEISL	08-Nov-16	530557	NCLRESE	10-Nov-16
532812	TFL	08-Nov-16	514332	NEOINFRA	10-Nov-16
530199	THEMISMED	08-Nov-16	500313	OILCOUNTUB	10-Nov-16
538464	TPROJECT	08-Nov-16	534076	ORIENTREF	10-Nov-16
520113	VESUVIUS	08-Nov-16	509782	OSEASPR	10-Nov-16
524129	VINYLINDIA	08-Nov-16	532827	PAGEIND	10-Nov-16
533269	WABAG	08-Nov-16	533178	PRADIP	10-Nov-16
533023	WABCOINDIA	08-Nov-16	532503	RAJPALAYAM	10-Nov-16
501370	WALCHPF	08-Nov-16	505800	RANEHOLDIN	10-Nov-16
524212	WANBURY	08-Nov-16	511712	RELICTEC	10-Nov-16
532774	AFL	09-Nov-16	501154	ROSEI	10-Nov-16
500877	APOLLOTYRE	09-Nov-16	520151	SHREYAS	10-Nov-16
532212	ARCHIES	09-Nov-16	526901	SONALAD	10-Nov-16

509917	TECHCON	10-Nov-16	531472	CYBELEIND	12-Nov-16
500411	THERMAX	10-Nov-16	524226	GAEL	12-Nov-16
500414	TIMEX	10-Nov-16	526729	GOLDIAM	12-Nov-16
531411	TUNITEX	10-Nov-16	532133	IFGLREFRAC	12-Nov-16
539123	VBIND	10-Nov-16	532340	OMNIAX	12-Nov-16
532351	AKSHOPTFBR	11-Nov-16	531779	PADALPO	12-Nov-16
506820	ASTRAZEN	11-Nov-16	517296	PHOENIXLL	12-Nov-16
512277	AUTOINT	11-Nov-16	500333	PIXTRANS	12-Nov-16
504671	CHASBRT	11-Nov-16	512099	PUNITCO	12-Nov-16
531775	CISTRO	11-Nov-16	532527	RKFORGE	12-Nov-16
539131	CLLIMITED	11-Nov-16	533470	RUSHIL	12-Nov-16
530171	DAULAT	11-Nov-16	531931	SAICAPI	12-Nov-16
532180	DHANBANK	11-Nov-16	526532	SFPIL	12-Nov-16
531306	DHPIND	11-Nov-16	533170	TAMBOLI	12-Nov-16
531237	DHRUVCA	11-Nov-16	534392	VSSL	12-Nov-16
505790	FAGBEARING	11-Nov-16	532509	SUPRAJIT	13-Nov-16
505714	GABRIEL	11-Nov-16	531179	ARMANFIN	14-Nov-16
505893	HINDHARD	11-Nov-16	523168	AYPLAMI	14-Nov-16
500202	INDLEASE	11-Nov-16	517203	BEELE	14-Nov-16
500211	INSILCO	11-Nov-16	519500	BKV	14-Nov-16
538422	JACKSON	11-Nov-16	532783	DAAWAT	14-Nov-16
504840	KAIRA	11-Nov-16	500164	GODREJIND	14-Nov-16
535730	KHOBSURAT	11-Nov-16	514360	GUPTCIN	14-Nov-16
523323	KOVAI	11-Nov-16	524378	JMDEPACKR	14-Nov-16
539446	KRISHFAB	11-Nov-16	539393	KCL	14-Nov-16
534532	LYPSAGEMS	11-Nov-16	590066	KCP	14-Nov-16
500520	M&M	11-Nov-16	530813	KRBL	14-Nov-16
500126	MERCK	11-Nov-16	536170	KUSHAL	14-Nov-16
517344	MINDTECK	11-Nov-16	522235	MINALIND	14-Nov-16
501343	MOTOGENFIN	11-Nov-16	532641	NDL	14-Nov-16
500298	NATPEROX	11-Nov-16	506128	PARNAXLAB	14-Nov-16
508989	NAVNETEDUL	11-Nov-16	500456	PASUPTAC	14-Nov-16
530897	NGIND	11-Nov-16	526813	RAGHUNAT	14-Nov-16
500307	NIRLON	11-Nov-16	531552	RAGHUTOB	14-Nov-16
533202	NITESHEST	11-Nov-16	530125	SAMRATPH	14-Nov-16
511632	OLYMTFI	11-Nov-16	530035	SANTOSHF	14-Nov-16
526481	PHOENXINTL	11-Nov-16	519234	SIEL	14-Nov-16
535514	PRIMECAPM	11-Nov-16	523425	SUNRAJDI	14-Nov-16
526492	RISHIROOP	11-Nov-16	526941	VAICC	14-Nov-16
503804	SHRIDINE	11-Nov-16	522267	VJLAXMIE	14-Nov-16
523790	SHUKJEW	11-Nov-16	514162	WELSPUNIND	14-Nov-16
531506	SKRABUL	11-Nov-16	532166	ALKASEC	15-Nov-16
504959	STOVACQ	11-Nov-16	531344	CONCOR	15-Nov-16
506655	SUDARSHEM	11-Nov-16	506943	JBCHEPHARM	18-Nov-16
537253	SUNLOC	11-Nov-16	539636	PRECAM	18-Nov-16
507747	TTKHEALTH	11-Nov-16	535755	ABFRL	24-Nov-16
531831	UNISH	11-Nov-16	522113	TIMKEN	28-Nov-16
511690	WARNER	11-Nov-16			
523411	ADCINDIA	12-Nov-16			
531719	BHAGCHEM	12-Nov-16			
514440	BPTX	12-Nov-16			
500085	CHAMBLFERT	12-Nov-16			
530859	COSBOARD	12-Nov-16			

Result Q2FY17

BSE CODE	NSE CODE	Sales Rs Cr	Sales YoY	Pat Rs Cr	PAT YoY
500412	TIRUMALCHM	254.10	11.43	16	(209.77)
504961	TATAYODOGA	16.60	(57.99)	(24)	153.64
500150	FOSECOIND	86.67	11.29	8	(12.75)
532790	TANLA	134.00	25.61	10	136.83
531209	NUCLEUS	95.60	12.90	14	201.32
522205	PRAJIND	205.79	1.72	3	(34.53)
513729	AROGRANITE	63.67	5.43	3	17.31
500730	NOCIL	181.30	0.75	46	151.61
500253	LICHSGFIN	3428.30	13.29	495	20.16
500233	KAJARIACER	706.00	16.22	64	8.29
533151	DBCORP	528.60	12.06	90	51.56
524669	HESTERBIO	29.60	28.58	6	38.60

Economic Calendar

Country	Monday 24th Oct 16	Tuesday 25th Oct 16	Wednesday 26th Oct 16	Thursday 27th Oct 16	Friday 28th Oct 16
US		HPI m/m ,S&P/CS Composite-20 HPI y/y , CB Consumer Confidence , Richmond Manufacturing Index .	Core Durable Goods Orders m/m , Durable Goods Orders m/m , S&P/CS Composite-20 HPI y/y , CB Consumer Confidence , New Home Sales , Crude Oil Inventories.	Unemployment Claims , Pending Home Sales m/m , Natural Gas Storage .	Advance GDP q/q , Advance GDP Price Index q/q , Employment Cost Index q/q , Revised UoM Consumer Sentiment , Revised UoM Inflation Expectations .
UK/EURO ZONE	Belgian NBB Business Climate , CBI Realized Sales.	German Ifo Business Climate , Prelim GDP q/q , German Import Prices m/m , German Ifo Business Climate , Prelim GDP q/q , BBA Mortgage Approvals.	Italian Prelim CPI m/m ,	German Unemployment Change , M3 Money Supply y/y , Italian Monthly Unemployment Rate , Private Loans y/y.	French Prelim GDP q/q , French Consumer Spending m/m , Spanish Flash GDP q/q , German Prelim CPI m/m , French Prelim CPI m/m.
INDIA					

Risk Disclosure & Disclaimer : This report/message is for the personal information of the authorized recipient and does not construe to be any investment, legal or taxation advice to you. Narnolia Securities Ltd. (Hereinafter referred as NSL) is not soliciting any action based upon it. This report/message is not for public distribution and has been furnished to you solely for your information and should not be reproduced or redistributed to any other person in any form. The report/message is based upon publicly available information, findings of our research wing "East wind" & information that we consider reliable, but we do not represent that it is accurate or complete and we do not provide any express or implied warranty of any kind, and also these are subject to change without notice. The recipients of this report should rely on their own investigations, should use their own judgment for taking any investment decisions keeping in mind that past performance is not necessarily a guide to future performance & that the the value of any investment or income are subject to market and other risks. Further it will be safe to assume that NSL and /or its Group or associate Companies, their Directors, affiliates and/or employees may have interests/ positions, financial or otherwise, individually or otherwise in the recommended/mentioned securities/mutual funds/ model funds and other investment products which may be added or disposed including & other mentioned in this report/message. NSL or any of its affiliates or employees shall not be in any way responsible for any loss or damage that may arise to any person from any action taken based on the above information or inadvertent error in the information contained in this report/message.



(Regn. No. : INP 000004011)

Narnolia Securities Ltd.

Narnolia Research Lab

Stellar IT Park | 5th Floor | Office Space No. 6 | Tower-IIInd Plot
No. C-25 | Sector-62 | Noida | Ph : 0120-4215110

Central Strategy Desk - Kolkata

201 | 2nd Floor | Marble Arch Building | 236B-AJC Bose Road
Kolkata-700 020 , Ph : 033-40501500 |
Email : research@narnolia.com | www.narnolia.com