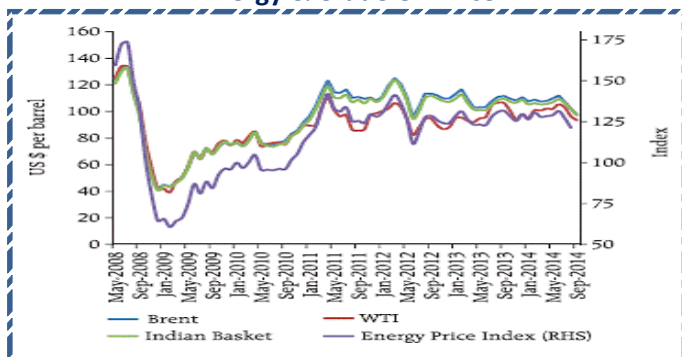


Quote of the Day

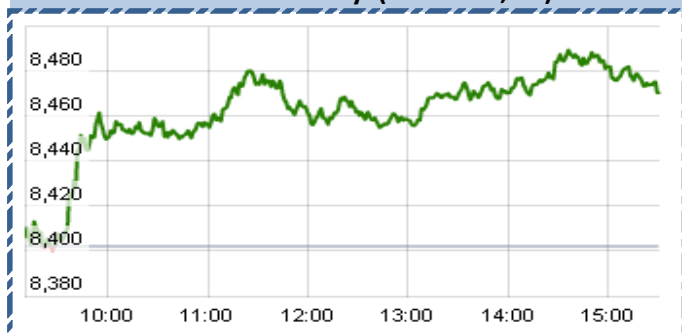
"The best way to think about investments is to be in a room with no one else and just think. And if that doesn't work, nothing else is going to work." **Warren Buffett**

Chart of the Day

Energy & Crude Oil Price



Index Action-Nifty (21st Nov, 14)



Index

Contents	Page	Coverage
News	3	UPDATE
Economic calendar	4	UPDATE

SGX NIFTY : 8543
(55 pts up)

MARKET

Name	Value	Change
Sensex	28,334	267.07
Nifty	8477.35	75.45
DOW	17810.06	91.06
NASDAQ	4712.97	11.10
CAC	4347.23	113.20
DAX	9732.55	248.55
FTSE	6750.76	71.86
NIKKIE	Closed	
HANG SENG	23875	438.38
EW ALL SHARE	14102.33	59.58

INSTITUTIONAL TURNOVER

FII			
Investor	Buy(Cr.)	Sale(Cr.)	Net(Cr.)
21st Nov 2014	4134.87	4,012.37	122.50
Nov,14	60647.65	52,785.47	7862.18
2014	867650.92	7,99,892.87	67758.05
DII			
Investor	Buy(Cr.)	Sale(Cr.)	Net(Cr.)
21st Nov 2014	1662.12	1,524.53	137.59
Nov,14	18101.63	24,060.97	(5959.34)
2014	310858.66	3,43,948.03	(31839.53)

COMMODITY PRICE

COMMODITY/CURRENCIES	Value	
GOLD	26391.00	↓
SILVER	36080.00	↑
CRUDEOIL	80.45	↑
COPPER	412.85	↑
NATURALGAS	277.60	↓
DOLLAR/RS.	61.76	↓
EURO/RS.	76.49	↑
POUND/RS.	96.68	↓

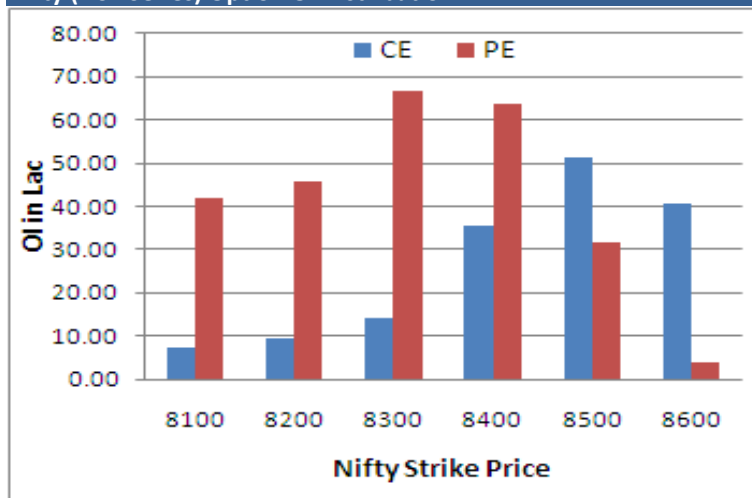
Narnolia Securities Ltd.

124, 1st floor 7/1, Lords Sinha Road Kolkata -700071. Ph 033-22821251 Toll Free no : 1-800-345-4000
email: research@narnolia.com, website : www.narnolia.com

NIFTY SNAPSHOT

Nifty Spot	8477.35(+75.45)
Nifty Nov 2014 Future	8488
Nifty Dec 2014 Future	8535
Nifty Nov 2014 Open Interest	20970050
Nifty Dec 2014 Open Interest	3964325
7 DMA of Spot Nifty	8101
21 DMA of Spot Nifty	8409
50 DMA of Spot Nifty	8261
VOLATILITY INDEX (VIX)	13.85(-0.31)
PUT CALL RATIO	1.17

Nifty (Nov Series) Option OI Distribution:



Activity of Nifty (Nov Series) Strike

Strike	CALL		PUT	
	OI	% Chng	OI	% Chng
8100	740000	-5.7	4204500	-13.9
8200	958525	-8.6	4582200	-16.8
8300	1395550	-22.8	6672750	-2.7
8400	3529600	-37.7	6384175	20.1
8500	5120700	-17.5	3148750	58.3
8600	4078350	-0.1	406175	51.7

Fresh Long Seen In (Rising OI -Rising Price)

Scrip	OI	OI ch%	CMP	Ch%
ICICIBANK	108,23,500	12.0	1734.0	2.7
M&M	43,27,500	9.6	1246.5	1.2
BHARTIARTL	149,70,000	8.4	400.8	0.8
MARUTI	28,47,125	7.6	3348.8	0.4
YESBANK	94,64,000	6.6	703.4	4.0

PCR (OI)

STOCK	T1	T2
VOLTAS	0.89	0.57
SBIN	1.19	0.82
ITC	0.66	0.47
PNB	0.79	0.60
ICICIBANK	1.21	0.91

8477.35 75.45 8488.80 68.45 28067.56 0.00 4438.41 0.00 62.00 0.00 T m x 531

Data Desktop Watches Chart Scan Trading Personal Help Live Chat Desktop : Derivative Desktop

CHXNifty - 21-11-14 3:36:39 PM 8477.35 0.90%

8408.20 8489.80 8398.60 8477.35 24099
SMA50, SMA(CloseLine:7), SMA(CloseLine:21), CrossSMA(CloseLine:50)



FIIs Activity (Fig in Cr)

Segment	Buy	Sell	Net
INDEX FUTURE	2,510	2,283	226
INDEX OPTION	24,425	24,466	(41)
STOCK FUTURE	5,978	6,358	(380)
STOCK OPTION	2,940	3,079	(139)
TOTAL	35,851	36,186	(334)

Fresh Shorts Seen In: (Rising OI -Falling Price)

Scrip	OI	OI ch%	CMP	Ch%
COLPAL	6,74,500	15.6	1894.1	-1.6
HDIL	354,20,000	15.1	81.4	-1.3
CESC	18,58,000	7.1	690.3	-3.4
UNIONBANK	99,87,000	7.0	211.4	-0.2
IRB	94,10,000	6.6	268.9	-2.0

PCR (OI)

STOCK	T1	T2
JSWSTEEL	0.40	0.63
TECHM	0.45	0.61
HINDUNILVR	0.74	0.98
CESC	0.32	0.42
APOLLOHOSP	0.44	0.56

Markets Snapshot

Top Price Performers

Top Performers 1D	% Change	Top Performers 1W	% Change	Top Performers 1M	% Change
BBTC	20.00	COMFINTE	71.88	SATINDLTD	100.45
BASML	19.99	SAHPETRO	57.30	ONMOBILE	90.98
CIMMCO	19.96	AMRUTANJAN	51.13	GOLDENTOBC	86.57
LOTUSEYE	19.91	LINCPENQ	42.97	INDINFO	83.90
ICSA	19.90	JMDTELEFILM	39.57	KDDL	78.38

Worst Price Performers

Worst Performers 1D	% Change	Worst Performers 1W	% Change	Worst Performers 1M	% Change
KAMATHOTEL	(10.27)	RASOYPR	(53.10)	STRAUSIND	(60.79)
RASOYPR	(9.92)	MLKFOOD	(28.17)	RASOYPR	(52.68)
NET4	(9.90)	SHRENTH	(25.73)	SURYAPHARM	(44.62)
GEOMETRIC	(8.54)	BINNY	(23.42)	COMMEXTech	(42.65)
AREALTY	(8.41)	PARABDRUGS	(22.81)	ADINATHBI	(41.18)

Top News :

- **GMR Male’ International Airport Private Limited (GMIAL)**, a subsidiary of GMR Infrastructure Limited (GMR), entered into a Concession Agreement with Government of Maldives (GoM) and Maldives Airport Company Limited (MACL) for modernization and operation of Ibrahim Nasir International Airport (INIA) in 2010 . GMIAL has submitted its claim for damages amounting to USD 803 Million (Rs. 4,987 Crore) for wrongful repudiation of the Concession Agreement for Maldives International Airport .
- **Future Consumer Enterprise Ltd** has pursuant to Share Purchase Agreement(s) executed with the concerned Sellers, acquired 97.97% equity shares of The Nilgiri Dairy Farm Private Limited ("NDFPL") in terms whereof, NDFPLand its subsidiary companies have become subsidiaries of the Company.
- **Clarification from Mahindra & Mahindra Ltd** : With respect to the news media report appearing on The Economic Times on November 20, 2014 titled "Mahindra Gets Nod to Sell Oz Planes Here"Mahindra & Mahindra Ltd replied stating "The Company wishes to clarify that this News Article does not pertain to Mahindra and Mahindra Limited. Rather it pertains to an unlisted subsidiary of the Company i.e. Mahindra Aerospace which is already in this line of Business. In any case, the aerospace business carried on by the unlisted subsidiary is not significant to the operations or performance of M&M."
- **Sun Group** may have finally finalised an investor for partially or completely offloading its stake in SpiceJet . The final stages and a term sheet may be signed by December. (SpiceJet is valued at Rs 1500 crore. Sun Group holds 53.4 percent stake in SpiceJet. It is not yet clear whether SpiceJet promoter and media baron Kalanithi Maran is mulling to exit completely from the low-cost airline.)
- **Astral Poly Tech** acquires 76% in Resinova for Rs 213cr . In August 2014, Astral had completed the acquisition of 80 percent stake in UK-based Seal It Services Ltd (Seal-It) which manufactures and sells a comprehensive range of sealants, adhesives, water proofing, cleaning products.
- **Iran** has imposed an import ban on basmati rice. Iran has barred rice from other countries as its local crop is reported to be good this year and is set to arrive in the market there. (KRBL exports around 2 percent (of total exports) to Iran.
- **Fund action** : Reliance Capital Partners sold 1,149,000 shares of INOX Leisure at Rs 182.15 on the NSE. La Mancha Resorts bought 170,000 shares of Aryaman Financial Services at Rs 30 on the BSE. Jwalamukhi Investment Holdings sold 626,486 shares of Bajaj Electric at Rs 220.03 on the BSE. Birla Sun Life Mutual Fund bought 200,000 shares of Atul Auto at Rs 405 on the BSE.
- **U.K. Public Sector** Net Borrowing fell to a seasonally adjusted 7.05B, from 10.57B in the preceding quarter whose figure was revised down from 11.07B. Analysts had expected U.K. Public Sector Net Borrowing to fall to 6.90B in the last quarter.
- **Canadian consumer price inflation** rose to a seasonally adjusted 0.1%, from 0.1% in the preceding month. Analysts had expected Canadian consumer price inflation to fall -0.3% last month.
- **Mexican GDP** rose to a seasonally adjusted 2.2%, from 1.6% in the preceding quarter. Analysts had expected Mexican GDP to rise to 2.4% in the last quarter.
- **Argentinian Economic Activity** rose to a seasonally adjusted -0.2%, from -1.2% in the preceding month. Analysts had expected Argentinian Economic Activity to rise to -0.8% last month.

Economic Calendar					
	Monday 24-Nov-14	Tuesday 25-Nov-14	Wednesday 26-Nov-14	Thursday 27-Nov-14	Friday 28-Nov-14
US	Flash Services PMI .	Prelim GDP q/q , CB Consumer Confidence , S&P/CS Composite-20 HPI y/y , Prelim GDP Price Index q/q , HPI m/m , Richmond Manufacturing Index .	Core Durable Goods Orders m/m , Unemployment Claims , Core PCE Price Index m/m , Durable Goods Orders m/m , Personal Spending m/m , New Home Sales , Pending Home Sales m/m , Crude Oil Inventories .		
UK/EURO ZONE	Nationwide HPI m/m , German Ifo Business Climate , 30-y Bond Auction , Belgian NBB Business Climate .	German Retail Sales m/m , German Final GDP q/q , Italian Retail Sales m/m , BBA Mortgage Approvals , Italian 10-y Bond Auction .	Second Estimate GDP q/q , Prelim Business Investment q/q , Index of Services 3m/3m , CBI Realized Sales .	German Prelim CPI m/m , Spanish Flash CPI y/y , German Unemployment Change , M3 Money Supply y/y , Private Loans y/y , GfK German Consumer Climate .	French Consumer Spending m/m , CPI Flash Estimate y/y , Core CPI Flash Estimate y/y , Unemployment Rate , Italian Prelim CPI m/m .
INDIA					



Narnolia Securities Ltd

124, 1st floor 7/ 1, Lords Sinha Road Kolkata 700071, Ph 033-22821251 Toll Free no : 1-800-345-4000

email: research@narnolia.com,

website : www.narnolia.com

Risk Disclosure & Disclaimer: This report/message is for the personal information of the authorized recipient and does not construe to be any investment, legal or taxation advice to you. Narnolia Securities Ltd. (Hereinafter referred as NSL) is not soliciting any action based upon it. This report/message is not for public distribution and has been furnished to you solely for your information and should not be reproduced or redistributed to any other person in any form. The report/message is based upon publicly available information, findings of our research wing "East wind" & information that we consider reliable, but we do not represent that it is accurate or complete and we do not provide any express or implied warranty of any kind, and also these are subject to change without notice. The recipients of this report should rely on their own investigations, should use their own judgment for taking any investment decisions keeping in mind that past performance is not necessarily a guide to future performance & that the value of any investment or income are subject to market and other risks. Further it will be safe to assume that NSL and /or its Group or associate Companies, their Directors, affiliates and/or employees may have interests/ positions, financial or otherwise, individually or otherwise in the recommended/mentioned securities/mutual funds/ model funds and other investment products which may be added or disposed including & other mentioned in this report/message.