

SGX NIFTY : 7815 ( 36 Pt Down )

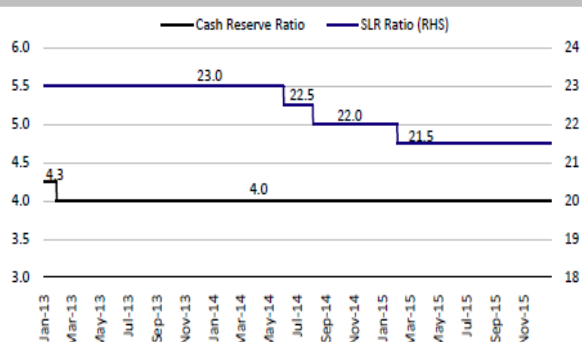
**Quote of the Day**

"The the ideal business is one that generates very high returns on capital and can invest that capital back into business at equally high rates. Imagine a \$100 million business that earns 20% in one year, reinvests the \$20 million profit and in the next year earns 20% of \$120 million and so forth."

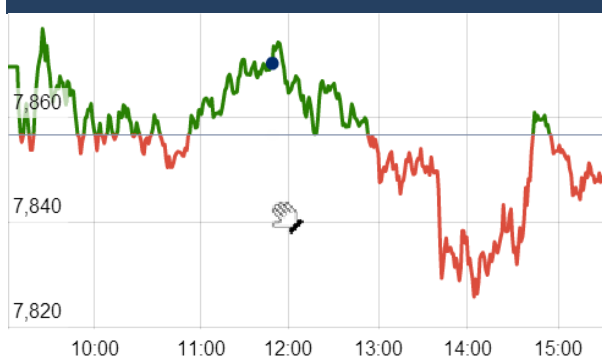
Warren Buffett

**Chart of the Day**

**CRR & SLR Rate Trend**



**Index Action Nifty ( 23th Nov 15 )**



**Index**

Contents	Page	Coverage
News	2	Update
Economic Calendar	3	Update

**Market**

Name	Value	Change
Sensex	25,819.34	(49.15)
Nifty	7849.25	(7.30)
DOW	17,793.08	(30.73)
NASDAQ	5,102.48	(2.44)
CAC	4,889.12	(21.85)
DAX	11,092.31	(27.52)
FTSE	6,305.20	(29.14)
NIKKIE	19,863.51	(16.30)
HANG SENG	22,484.50	(181.50)
EW ALL SHARE	13774.8	(30.00)

**Instituional Turnover**

**FII**

Investor	Buy(Cr.)	Sale(Cr.)	Net(Cr.)
23-Nov-15	3143.41	3178.78	(35.37)
Nov,15	43008.22	49082.01	(6073.79)
2015	1017383.98	1027676.99	23177.15

**DII**

Investor	Buy(Cr.)	Sale(Cr.)	Net(Cr.)
23-Nov-15	1361.82	1271.54	90.28
Nov,15	19401.02	14513.76	(446.80)
2015	412989.53	358634.12	25255.74

**Commodity Price**

Commodity/Currencies	Value	
GOLD	25152.00	↓
SILVER	33570.00	↓
CRUDEOIL	41.88	↓
COPPER	296.30	↓
NATURALGAS	156.00	↑
DOLLAR/RS.	66.14	↑
EURO/RS.	70.59	↓
POUND/RS.	100.40	↓

## Market Snapshot

### Top Price Performers

Top Performers 1D	% Change	Top Performers 1W	% Change	Top Performers 1M	% Change
EON	20.00	KINETICENG	44.88	MUDRA	80.59
VICEROY	20.00	RPGLIFE	44.80	MANUGRAPH	73.94
RPGLIFE	19.98	MUDRA	44.52	SHIVTEX	70.20
CHEVIOT	19.97	EON	43.32	ALLSEC	65.97
PARABDRUGS	19.97	SHIVTEX	42.86	MOREPENLAB	62.97

Worst Performers 1D	% Change	Worst Performers 1W	% Change	Worst Performers 1M	% Change
BATLIBOI	(7.28)	PLETHICO	(22.11)	SARLAPOLY	(89.48)
RAJSREESUG	(7.21)	CMAHENDRA	(20.37)	HELIOSMATH	(50.96)
ALKALI	(6.61)	CMAHENDRA	(20.37)	SHILPAMED	(48.51)
FARMAXIND	(6.25)	INDINFO	(20.00)	PLETHICO	(46.56)
NUTEK	(6.15)	RAJSREESUG	(18.57)	EROSMEDIA	(46.19)

### Top News

- **Bank of India (BOI)** said it will raise capital by allotting two crore equity shares to LIC at a price of Rs 264.12 crore in order to comply with Basel norms. The bank will hold its Extraordinary General Meeting of the shareholders on December 1, to issue and allot these many shares to LIC. To create, offer, issue and allot 2,00,00,000 equity shares of Rs 10 each for cash at Rs 132.06 per share including premium of Rs 122.06 per equity share on preferential basis to LIC
- **Pfizer Inc and Botox maker Allergan Plc** have entered into a merger agreement for a total enterprise value of about USD 160 billion in the biggest ever deal in healthcare sector. The combined company is expected to generate annual operating cash flow in excess of USD 25 billion beginning in 2018 with broadened innovative pipeline of more than 100 combined mid-to-late stage programmes in development. As per the definitive merger agreement that has been approved by the Boards of the two companies, Pfizer will combine with Allergan in a stock transaction currently valued at USD 363.63 per Allergan share, for a total enterprise value of approximately USD 160 billion
- **Arshiya promoters'** shareholding in the company increased by 2.5 percent to 75 percent after corporate debt restructuring (CDR) scheme. Archana A Mittal's shareholding increased to 63.11 percent from 59.48 percent while Ajay S Mittal's stake declined to 11.88 percent from 13.05 percent after preferential allotment.
- **IDBI Bank** launched an issue of US dollar-denominated green bonds through its Dubai branch. The bank will utilise the proceeds to fund new and existing green projects. The issue of the green bond is through its Dubai International Financial Centre branch. The issuer will use the net proceeds from the sale of the notes to fund, or reimburse the issuer for its funding of, certain new and existing eligible green projects,
- **Gammon India Ltd's** lenders have begun a process to swap their debt into equity under the so-called strategic debt restructuring scheme. India's central bank in June allowed lenders to temporarily take control of a company under its strategic debt restructuring scheme.
- Credit ratings agency Fitch downgraded its outlook on **JSW Steel** to 'Negative' from 'Stable' due to risk of further decline in product prices. It also affirmed Long-Term Issuer Default Rating (IDR) at 'BB+' and the steelmaker's senior unsecured rating and the rating on its USD 500 million, 4.75 percent senior unsecured notes due 2019 at 'BB+'
- **Bajaj Electricals** will merge with Hind Lamps Limited's (HLL) manufacturing business and the transaction is likely to close in the next 12 months. On HLL's business, it has been under Board for Industrial and Financial Reconstruction (BIFR) for the last 10-12 years and is valued at Rs 16 crore. It has a negative net-worth of Rs 25-30 crore. With this deal, cost of borrowing for HLL will come down from 13 percent to 10-11 percent
- U.S. home resales fell 3.4% to an annual rate of 5.36 million units from 5.55 million in September. Analysts had expected home resales to fall 2.3% to 5.40 million units.
- **Canada said that retail sales** fell to -0.5%, from 0.5% in the preceding month. Analysts had expected retail sales to rise 0.2% last month.
- **National Association of Realtors** said that existing home sales decreased 3.4% to a seasonally adjusted 5.36 million units last month from 5.55 million in September. Analysts had expected existing home sales to fall 2.3% to 5.40 million units in October.
- **Euro zone consumer confidence** fell to an annual rate of -6.0, from -7.6 in the preceding month whose figure was revised up from -7.7. Analysts had expected Euro zone consumer confidence to fall -7.5 last month.
- **Mexican Economic Activity** rose to a seasonally adjusted 3.10%, from 2.60% in the preceding month. Analysts had expected Mexican Economic Activity to remain unchanged at 2.60% last month.

### Economic Calendar

Country	Monday 20th Nov 15	Tuesday 21th Nov 15	Wednesday 22th Nov 15	Thursday 23th Nov 15	Friday 24th Nov 15
US	Fed Announcement ,Existing Home Sales .	CB Consumer Confidence ,Richmond Manufacturing Index .	Core Durable Goods Orders m/m , Unemployment Claims ,Core PCE Price Index m/m , Durable Goods Orders m/m .		
UK/EURO ZONE	French Flash Manufacturing PMI ,French Flash Services PMI , German Flash Manufacturing PMI , German Flash Services PMI ,	German Ifo Business Climate , Belgian NBB Business Climate , German Final GDP q/q .	Italian Retail Sales m/m ,German 10-y Bond Auction ,	M3 Money Supply y/y , Private Loans y/y .	Spanish Flash CPI y/y , Second Estimate GDP q/q , Prelim Business Investment q/q .
INDIA					

## Narnolia Securities Ltd.

**Narnolia Research Lab**  
Stellar IT Park | 5th Floor | Office Space No. 6 | Tower-IInd Plot No. C-25 | Sector-62 |  
Noida | Ph : 0120-4215110

**Central Strategy Desk - Kolkata**  
124 | 1st Floor | 7/1 Lords Sinha Road | Kolkata - 71  
Ph : 033-22821500 | M : 93347 14418, 98302 69810