

SGX NIFTY : 7976 (32 Pt Down)

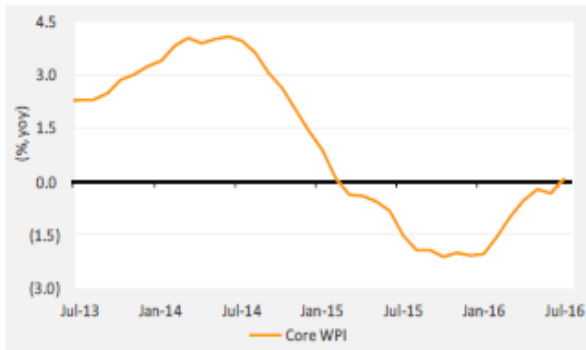
Quote of the Day

"Over the long term, it's hard for a stock to earn a much better return than the business which underlies it earns. If the business earns six percent on capital over forty years and you hold it for that forty years, you're not going to make much different than a six percent return - even if you originally buy it at a huge discount. Conversely, if a business earns eighteen percent on capital over twenty or thirty years, even if you pay an expensive looking price, you'll end up with one hell of a result."

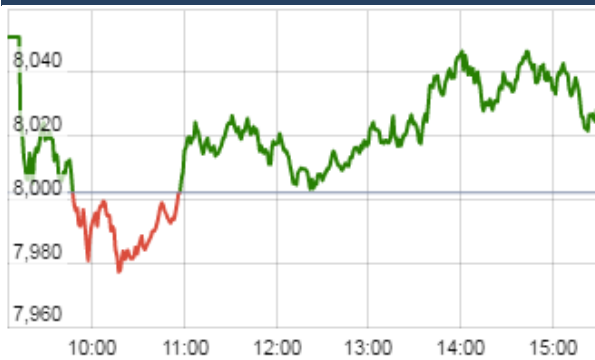
Charlie Munger

Chart of the Day

Core WPI



Index Action Nifty (23th Nov 16)



Index

Contents	Page	Coverage
News	2	Update
Economic Calendar	3	Update

Market

Name	Value	Change
Sensex	26,051.81	91.03
Nifty	8033.30	31.00
DOW	18,332.74	73.14
NASDAQ	5,380.68	(5.67)
CAC	4,529.41	(19.41)
DAX	10,662.44	(51.41)
FTSE	6,871.71	(2.01)
NIKKIE	18,357.66	194.72
HANG SENG	22,558.47	(123.93)
EW ALL SHARE	14417.99	132.64

Instituional Turnover

FII

Investor	Buy(Cr.)	Sale(Cr.)	Net(Cr.)
23-Nov-16	4265.03	5288.15	(1023.12)
Nov,16	77625.79	92639.01	(15013.22)
2016	961596.22	954211.96	7384.26

DII

Investor	Buy(Cr.)	Sale(Cr.)	Net(Cr.)
23-Nov-16	2695.57	1440.90	1254.67
Nov,16	52204.11	39017.86	13186.25
2016	443845.28	419943.00	23902.28

Commodity Price

Commodity/Currencies	Value	
GOLD	28829.00	↓
SILVER	40526.00	↓
CRUDEOIL	44.90	↑
COPPER	378.30	↑
NATURALGAS	210.10	↑
DOLLAR/RS.	68.56	↑
EURO/RS.	72.44	↓
POUND/RS.	85.46	↓

Market Snapshot

Top Price Performers

Top Performers 1D	% Change	Top Performers 1W	% Change	Top Performers 1M	% Change
ARIES	19.99	UPERGANGES	41.32	MBSWITCH	57.09
CHEMFALKAL	19.99	PNBGILTS	36.73	PNBGILTS	52.64
TVSELECT	19.99	MAWANASUG	33.94	ANDHRAPET	34.99
ADANITRANS	19.96	ODHSUG	32.30	ADANITRANS	30.00
CINEPRO	19.95	DALMIASUG	29.75	PIXTRANS	28.55

Worst Performers 1D	% Change	Worst Performers 1W	% Change	Worst Performers 1M	% Change
COMPUAGE	(10.64)	ENERGYDEV	(30.71)	ENERGYDEV	(63.82)
ABGHEAVY	(9.02)	SUNILHITEC	(30.50)	PRAKASHCON	(61.20)
ALOKTEXT	(7.22)	SUDAR	(17.91)	SUNILHITEC	(60.57)
GOLDENTOBC	(6.33)	PRAKASHCON	(17.44)	SIGNET	(44.10)
RASOYPR	(5.88)	FACORALL	(16.77)	PRIMEPRO	(43.10)

Top News

• **Mgt Int : CUB**

Banking may see healthy gains from treasury book: City Union
All banks have huge surplus statutory liquidity ratio (SLR) and surplus appreciation in their investment book. The incremental profit for the banking sector for the next two quarters and particularly third quarter will be coming from booking the treasury profit only to a greater extent

• **BHEL** has commissioned a 93 MW steam turbine-based captive power plant (CPP) at Hazira in Gujarat for Reliance Industries Ltd (RIL). This is the second unit of the 4x93 MW steam turbine-based CPP, being set up by BHEL for RIL at Hazira . The company is also setting up a 3x93 MW steam turbine-based CPP at Dahej in Gujarat.

• **Sun Pharma** has signed definitive agreements to acquire 85.1 percent stake in Russia-based JSC Biosintez for USD 24 million. Sun Pharma would also assume a debt of about USD 36 million as part of this transaction. Sun Pharma would also assume a debt of about USD 36 million as part of this transaction.

• **State Bank of India** has slashed bulk term deposit rates between 125-190 basis points across various tenors from November 24. Bulk deposits cover funds over Rs 1 crore but less than Rs 10 crore. The rates for 7-45 days has been cut by 125 bps to 3.75 percent, while the largest cut is in the 180-210-days deposit by 190 bps to 3.85 percent.

• **L&T Finance Holdings**

-L&T Finance has appointed Kotak Investment Bank
-Kotak will help in selling the de-focused business of Rs 3,800 crore

• **Tata Elxsi** added over 20 percent to design & tech workforce in last 4 months via new hiring . The addition, the highest in Tata Elxsi's history, was done with the long-term goal of growing globally-integrated executives with the right skills and capabilities

• **GVK**

GVK Airport looks to raise USD 200 million
GVK Airport is a subsidiary of GVK Power & Infra

• **Lupin** has received tentative approval for its Abacavir Sulfate and Lamivudine tablets from the USFDA to market generic version of ViiV Healthcare company's Epzicom tablets. Lupin's Abacavir Sulfate and Lamivudine tablets, 600 mg/300 mg are the AB rated generic equivalent of ViiV Healthcare company's Epzicom tablets, 600 mg/300 mg.

• **Infosys** will invest Rs 31.6 crore in Stellaris Venture Partners, an early stage venture fund. This investment is towards the first close of Stellaris' fund. This investment is towards the first close of Stellaris' fund

• **Cipla** said Chase Pharmaceuticals Corporation, in which it has 16.7 per cent stake has been acquired by Ireland-headquartered Allergan plc. Delaware-based Chase Pharmaceuticals Corporation, in which the company's UK arm Cipla (EU) Ltd has 16.7 per cent stake, has been acquired by a subsidiary of Allergan plc.

• **Rallis India** will acquire an additional 26.37 per cent stake in its arm Zero Waste Agro-Organics for nearly Rs 20 crore, making the company a wholly-owned subsidiary. After the acquisition, Rallis India's stake will increase to 100 per cent in Zero Waste Agro-Organics Ltd (ZWAOL), which manufactures organic compost.

• **U.S. consumer sentiment index** rose to a final reading of 93.8 for November, up from both the preliminary reading of 91.6 earlier in the month and October's final reading of 87.2. Analysts polled had expected a reading of 91.6.

• **Japan Manufacturing Purchasing Managers Index (PMI)** for November, released on Thursday, fell to a seasonally adjusted 51.1 from a final 51.4 in October.

• **U.S. Natural Gas Storage** rose to a seasonally adjusted annual rate of 2B, from 30B in the preceding month. Analysts had expected U.S. Natural Gas Storage to rise 5B last month.

• **Singaporean GDP** rose to a seasonally adjusted 1.1%, from 0.6% in the preceding quarter. Analysts had expected Singaporean GDP to rise to 1.0% in the last quarter.

Result Calendar Q2FY17

BSE Code	Company Name	Date	BSE Code	Company Name	Date
535755	ABFRL	24-Nov-16	532389	VALECHAENG	28-Nov-16
517552	ADVNCMIC	24-Nov-16	506525	KANORICHEM	29-Nov-16
511716	ESCORTSFIN	24-Nov-16	523630	NFL	29-Nov-16
523672	FLEXFO	24-Nov-16	500400	TATAPOWER	29-Nov-16
500227	JINDALPOLY	24-Nov-16	531426	TNPL	29-Nov-16
531687	KGL	24-Nov-16	524212	WANBURY	29-Nov-16
539207	MANPASAND	24-Nov-16	502355	BALKRISIND	30-Nov-16
532391	OPTOCIRCUI	24-Nov-16	532708	GVKPIL	30-Nov-16
530239	SUVEN	24-Nov-16	532693	PUNJLLOYD	30-Nov-16
532382	BALAJITELE	25-Nov-16	520111	RATNAMANI	30-Nov-16
500043	BATAINDIA	25-Nov-16	506390	CLNINDIA	1-Dec-16
500048	BEML	25-Nov-16	507815	GILLETTE	1-Dec-16
502219	BOROSIL	25-Nov-16	532702	GSPL	1-Dec-16
532734	GPIL	25-Nov-16	513605	SRIPIPES	1-Dec-16
533162	HATHWAY	25-Nov-16	532930	BGREENERGY	2-Dec-16
521016	ICIL	25-Nov-16	540153	ENDURANCE	2-Dec-16
539332	NAVKARCORP	25-Nov-16	509073	HATHWAYB	2-Dec-16
530923	RCLFOODS	25-Nov-16	533177	IL&FSTRANS	2-Dec-16
530549	SHILPAMED	25-Nov-16	539302	POWERMECH	2-Dec-16
500285	SPICEJET	25-Nov-16	532515	TVTODAY	2-Dec-16
590005	TIDEWATER	25-Nov-16	523890	DSKULKARNI	3-Dec-16
500148	UFLEX	25-Nov-16	500459	PGHH	3-Dec-16
523660	WATERBASE	25-Nov-16	500023	ASIANHOTNR	5-Dec-16
530343	GENUSPOWER	26-Nov-16	500830	COLPAL	5-Dec-16
533257	INDOSOLAR	26-Nov-16	532051	SWELECTES	5-Dec-16
506528	KELENRG	26-Nov-16	500128	ELECTCAST	6-Dec-16
500488	ABBOTINDIA	28-Nov-16	523638	IPRINGLTD	7-Dec-16
519383	ANIKINDS	28-Nov-16	517300	GIPCL	9-Dec-16
533276	BSLIMITED	28-Nov-16	590072	SUNDRMBRAK	10-Dec-16
533144	COX&KINGS	28-Nov-16	500093	CROMPGREAV	12-Dec-16
500183	HFCL	28-Nov-16	512237	JAICORPLTD	12-Dec-16
509635	HINDCOMPOS	28-Nov-16	531882	KWALITY	12-Dec-16
522285	JAYNECOIND	28-Nov-16	521070	ALOKTEXT	13-Dec-16
539957	MGL	28-Nov-16	526622	MFLINDIA	13-Dec-16
533106	OIL	28-Nov-16	500338	PRISMCEM	13-Dec-16
532710	SADBHAV	28-Nov-16	533152	MBLINFRA	14-Dec-16
522113	TIMKEN	28-Nov-16	509243	TVSSRICHAK	14-Dec-16
532356	TRIVENI	28-Nov-16	524038	VENLONENT	31-Jan-17

Economic Calendar					
Country	Monday 21th Nov 16	Tuesday 22th Nov 16	Wednesday 23th Nov 16	Thursday 24th Nov 16	Friday 25th Nov 16
US	Flash Manufacturing PMI , Flash Services PMI.	Existing Home Sales .	Core Durable Goods Orders m/m , Durable Goods Orders m/m , S&P/CS Composite-20 HPI y/y , CB Consumer Confidence , New Home Sales , Crude Oil Inventories , FOMC Meeting Minutes.	Unemployment Claims .	Revised UoM Consumer Sentiment , Revised UoM Inflation Expectations .
UK/EURO ZONE	French Flash Manufacturing PMI , French Flash Services PMI , Spanish Unemployment Rate , German Constitutional Court Ruling , German Flash Manufacturing PMI , German Flash Services PMI , Flash Manufacturing PMI , Flash Services PMI .	Italian Retail Sales m/m .	GfK German Consumer Climate , ECB Financial Stability Review , Autumn Forecast Statement .	German Final GDP q/q , German Ifo Business Climate , Italian Monthly Unemployment Rate .	German Import Prices m/m , French Consumer Spending m/m , Second Estimate GDP q/q , Prelim Business Investment q/q , Index of Services 3m/3m.
INDIA					

Risk Disclosure & Disclaimer : This report/message is for the personal information of the authorized recipient and does not construe to be any investment, legal or taxation advice to you. Narnolia Securities Ltd. (Hereinafter referred as NSL) is not soliciting any action based upon it. This report/message is not for public distribution and has been furnished to you solely for your information and should not be reproduced or redistributed to any other person in any form. The report/message is based upon publicly available information, findings of our research wing "East wind" & information that we consider reliable, but we do not represent that it is accurate or complete and we do not provide any express or implied warranty of any kind, and also these are subject to change without notice. The recipients of this report should rely on their own investigations, should use their own judgment for taking any investment decisions keeping in mind that past performance is not necessarily a guide to future performance & that the the value of any investment or income are subject to market and other risks. Further it will be safe to assume that NSL and /or its Group or associate Companies, their Directors, affiliates and/or employees may have interests/ positions, financial or otherwise, individually or otherwise in the recommended/mentioned securities/mutual funds/ model funds and other investment products which may be added or disposed including & other mentioned in this report/message. NSL or any of its affiliates or employees shall not be in any way responsible for any loss or damage that may arise to any person from any action taken based on the above information or inadvertent error in the information contained in this report/message.

Narnolia

Advance Strategy · Simple Solutions

(Regn. No. : INP 000004011)

Narnolia Securities Ltd.

Narnolia Research Lab

Stellar IT Park | 5th Floor | Office Space No. 6 | Tower-IIInd Plot
No. C-25 | Sector-62 | Noida | Ph : 0120-4215110

Central Strategy Desk - Kolkata

201 | 2nd Floor | Marble Arch Building | 236B-AJC Bose Road
Kolkata-700 020 , Ph : 033-40501500 |
Email : research@narnolia.com | www.narnolia.com