

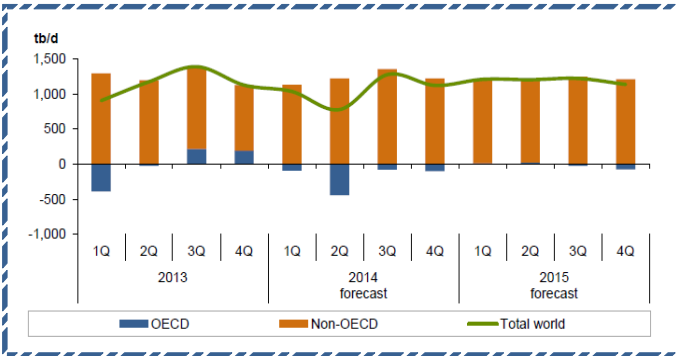
**Quote of the Day**

"Surprise and shock are endemic to the system, and people should always arrange their affairs so that they will survive such events. They will end up richer that way than focusing all the time on getting

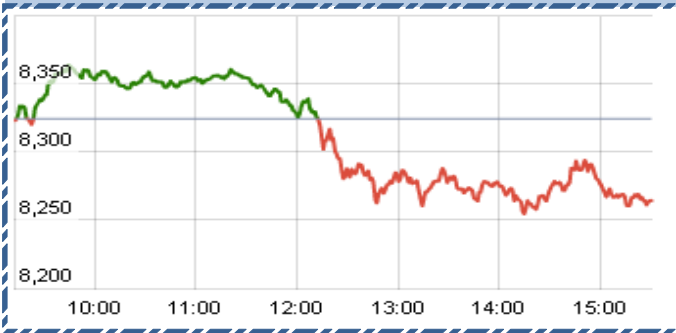
**SGX NIFTY : 8274**  
**( 3.50 pts Up)**

**Chart of the Day**

**World Oil Demand Growth**



**Index Action-Nifty ( 23rd Dec, 14)**



**Index**

Contents	Page	Coverage
News	3	UPDATE
Economic calendar	4	UPDATE

**MARKET**

Name	Value	Change
Sensex	27,506	(195.33)
Nifty	8,267.00	(57.00)
DOW	18024	64.78
NASDAQ	4765.42	(16.00)
CAC	4314.97	60.54
DAX	9922.11	56.35
FTSE	6598.18	21.44
NIKKIE	17834.86	199.72
HANG SENG	23353.83	20.14
EW ALL SHARE	13816.37	(68.10)

**INSTITUTIONAL TURNOVER**

FII			
Investor	Buy(Cr.)	Sale(Cr.)	Net(Cr.)
23rd Dec	2148.19	2,593.12	(444.93)
Dec,14	36374.74	30,756.19	5618.55
2014	935615.71	8,59,155.70	76460.01
DII			
Investor	Buy(Cr.)	Sale(Cr.)	Net(Cr.)
23rd Dec	1845.54	1,329.20	516.34
Dec,14	13331.59	14,338.12	(1006.53)
2014	334753.57	3,70,161.47	(35407.90)

**COMMODITY PRICE**

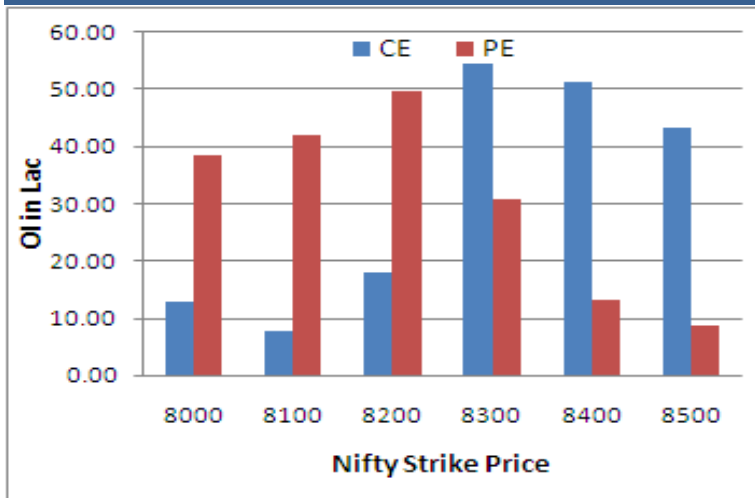
COMMODITY/CURRENCIES	Value	
GOLD	26625.00	↑
SILVER	36423.00	↑
CRUDEOIL	56.73	↓
COPPER	406.30	↑
NATURALGAS	198.90	↓
DOLLAR/RS.	63.28	↑
EURO/RS.	77.20	↑
POUND/RS.	98.34	↓

**Narnolia Securities Ltd.**

**NIFTY SNAPSHOT**

Nifty Spot	8267(-57.00)
Nifty Dec 2014 Future	8265
Nifty Jan 2014 Future	8335
Nifty Dec 2014 Open Interest	13359375
Nifty Jan 2014 Open Interest	15943850
7 DMA of Spot Nifty	8519
21 DMA of Spot Nifty	8366
50 DMA of Spot Nifty	8253
VOLATILITY INDEX (VIX)	15.29(+1.09)
PUT CALL RATIO	1.01

**Nifty (Dec Series) Option OI Distribution:**



**Activity of Nifty (Dec Series) Strike**

Strike	CALL		PUT	
	OI	% Chng	OI	% Chng
8000	1298625	-75.80	3840075	-20.37
8100	758275	-28.04	4196125	-9.77
8200	1789075	-59.41	4986425	4.39
8300	5449150	31.27	3075625	-39.68
8400	5149050	-2.46	1304850	-30.87
8500	4338000	-14.32	874825	-82.96

**Fresh Long Seen In (Rising OI -Rising Price)**

Scrip	OI	OI ch%	CMP	Ch%
SUNTV	11,77,000	8.5	362.7	0.9
IGL	6,01,500	3.7	453.8	4.5
INDIACEM	243,82,000	3.5	80.3	1.2
ZEEL	125,17,000	3.3	378.1	0.1
HEROMOTOCO	14,94,125	3.1	3140.1	0.8

**PCR (OI)**

STOCK	T1	T2
BAJAJ-AUTO	0.59	0.33
JUBLFOOD	0.34	0.28
LUPIN	0.56	0.46
HEROMOTOCO	0.58	0.49
JSWENERGY	0.36	0.31



**FII Activity (Fig in Cr)**

Segment	Buy	Sell	Net
INDEX FUTURE	8,086	6,668	1,418
INDEX OPTION	33,160	31,979	1,180
STOCK FUTURE	16,879	17,015	(136)
STOCK OPTION	2,291	2,390	(99)
<b>TOTAL</b>	<b>60,415</b>	<b>58,052</b>	<b>2,364</b>

**Fresh Shorts Seen In: (Rising OI -Falling Price)**

Scrip	OI	OI ch%	CMP	Ch%
SIEMENS	17,58,500	13.4	844.1	-3.2
VOLTAS	68,59,000	12.4	239.7	-4.2
RELINFRA	84,02,000	7.1	490.3	-3.1
PFC	53,08,000	6.4	294.7	-2.7
HINDALCO	300,66,000	5.3	153.2	-1.7

**PCR (OI)**

STOCK	T1	T2
IBREALEST	0.23	0.35
HCLTECH	0.45	0.60
TATAMTRDVR	0.75	0.87
TECHM	0.41	0.47
VOLTAS	0.39	0.44

## Markets Snapshot

### Top Price Performers

Top Performers 1D	% Change	Top Performers 1W	% Change	Top Performers 1M	% Change
ORIENTCONT	19.81	GUJRATGAS	40.57	STRAUSIND	101.30
INDNIPPON	19.40	MAXWELL	40.03	HINDDORROL	68.53
KANANIIND	18.99	JINDALPHOT	35.55	CENTRUM	66.30
GUJRATGAS	18.24	ORIENTCONT	35.04	BINNY	56.61
MADHUCON	14.96	DCM	29.55	JETAIRWAYS	55.12

### Worst Price Performers

Worst Performers 1D	% Change	Worst Performers 1W	% Change	Worst Performers 1M	% Change
NITESHEST	(10.54)	KSERASERA	(44.46)	KSERASERA	(57.23)
MANAKSIA	(9.90)	WINSOMEDJ	(27.08)	MANAKSIA	(55.86)
ISIBARS	(9.76)	RAMKASH	(21.61)	PRITI	(48.73)
STERLINBIO	(9.76)	RASOYPR	(21.53)	WINSOMEDJ	(47.76)
MODILUFT	(9.46)	OUTCTYTRVL	(21.03)	RAMKASH	(46.39)

### Top News :

- **Gujarat Pipavav Port** is entering into arrangement with NYK Auto Logistics (India) wherein NYK has been sub-leased land for developing a dedicated common user integrated RO-RO yard at Pipavav Port . The RO-RO yard with annual designed capacity for handling 250,000 vehicles will be ready for operations by 02 of Calendar Year 2015.

- **Mukand** the board of directors approved a proposal to transfer its special and alloy steel business as a going concern by way of a slump sale to a subsidiary company for an enterprise value of Rs 1,590 crore . The steel and alloy business has an installed capacity of 3.7 lakh million tonne per annum.

- **Orchid Chemicals & Pharmaceuticals** its fund raising plans to ease out debts . As part of the CDR package, promoter group firm will pick up stakes to infuse Rs 92.17 crore into the company through preferential allotment of shares. It has around Rs 3,500 crore outstanding debt.

- **UltraTech Cement** announced acquisition of Jaiprakash Associates ' two cement units and associated power plants in Madhya Pradesh for Rs 5,400 crore. The two units in Madhya Pradesh include clinker capacity of 2.1 million tonne and cement grinding capacity of 2.6 MT at Bela along with a captive power plant of 25 MW. In addition, 3.1 MT of clinker capacity and 2.3 MT of cement grinding capacity at Sidhi will also be sold along with a 155 MW power plant.

- **Novartis-GSK Pharma deal** -GSK to acquire Novartis global human vaccines business -Novartis-GSK Pharma to form consumer healthcare JV -GSK Pharma to contribute global consumer healthcare business to JV -Novartis will contribute its over the counter consumer healthcare business to JV -GSK Pharma to hold 63.5 percent equity in JV, Novartis to hold 36.5 percent -Novartis to acquire GSK Pharma's oncology products portfolio

- **NTPC** -Company to lose its first UMPP, government to cancel bid as private companies pull out, final call on 2 ultra mega power projects by January 5: BS -NTPC board approves bonus debenture issue: Business Line -Company to issue 824.54 crore debentures amounting to Rs 10306 crore

- **Alstom T&D India** -Gets order worth around Rs 180 crore from NTPC -To supply 765 kV switchyard at NTPC's Darlipalli STPP in Sundergarh, Odisha

- **Cipla** its South African subsidiary Cipla Medpro bagged Rs 1,096.6 crore order from South Africa Government.

- **U.K. current account balance** fell to a seasonally adjusted -27.0B, from -24.3B in the preceding month whose figure was revised down from -23.1B. Analysts had expected U.K. current account balance to fall -21.9B last month.

- **BAA mortgage approvals** fell to a seasonally adjusted 36.7K, from 37.2K in the preceding month whose figure was revised up from 37.1K. Analysts had expected BAA mortgage approvals to remain unchanged at 37.1K last month.

- **U.K. Index of Services** rose to 0.7%, from 0.8% in the preceding month. Analysts had expected U.K. Index of Services to rise 0.7% last month.

- **U.K. Office for National Statistics** said that GDP rose to 0.7%, from 0.8% in the preceding quarter whose figure was revised up from 0.7%. Analysts had expected U.K.'s gross domestic product to rise 0.7% in the last quarter.

## Economic Calendar

	Monday 22-Dec-14	Tuesday 23-Dec-14	Wednesday 24-Dec-14	Thursday 25-Dec-14	Friday 26-Dec-14
US	Existing Home Sales .	Core Durable Goods Orders m/m ,Final GDP q/q , Core PCE Price Index m/m , Durable Goods Orders m/m , Personal Spending m/m , Final GDP Price Index q/q , Personal Income m/m , Flash Manufacturing PMI , New Home Sales .	Unemployment Claims , Crude Oil Inventories , Natural Gas Storage .	Holiday	Revised UoM Consumer Sentiment
UK/EURO ZONE	German Unemployment Change , GfK Consumer Confidence .	BBA Mortgage Approvals , Current Account , German Retail Sales m/m , Final GDP q/q ,		Holiday	
INDIA					



## Narnolia Securities Ltd

124, 1st floor 7/ 1, Lords Sinha Road Kolkata 700071, Ph 033-22821251 Toll Free no : 1-800-345-4000

email: [research@narnolia.com](mailto:research@narnolia.com),

website : [www.narnolia.com](http://www.narnolia.com)

**Risk Disclosure & Disclaimer:** This report/message is for the personal information of the authorized recipient and does not construe to be any investment, legal or taxation advice to you. Narnolia Securities Ltd. (Hereinafter referred as NSL) is not soliciting any action based upon it. This report/message is not for public distribution and has been furnished to you solely for your information and should not be reproduced or redistributed to any other person in any form. The report/message is based upon publicly available information, findings of our research wing "East wind" & information that we consider reliable, but we do not represent that it is accurate or complete and we do not provide any express or implied warranty of any kind, and also these are subject to change without notice. The recipients of this report should rely on their own investigations, should use their own judgment for taking any investment decisions keeping in mind that past performance is not necessarily a guide to future performance & that the the value of any investment or income are subject to market and other risks. Further it will be safe to assume that NSL and /or its Group or associate Companies, their Directors, affiliates and/or employees may have interests/ positions, financial or otherwise, individually or otherwise in the recommended/mentioned securities/mutual funds/ model funds and other investment products which may be added or disposed including & other mentioned in this report/message.