

SGX NIFTY : 7888 (21 Pt Up)

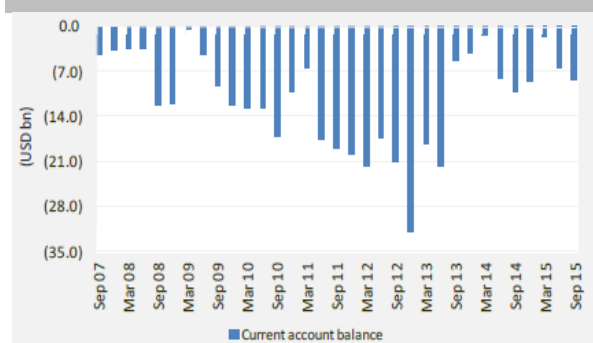
Quote of the Day

"Although I consider myself to be primarily in the quantitative school, the really sensational ideas I have had over the years have been heavily weighted toward the qualitative side where I have had a 'high-probability insight'. This is what causes the cash register to really sing."

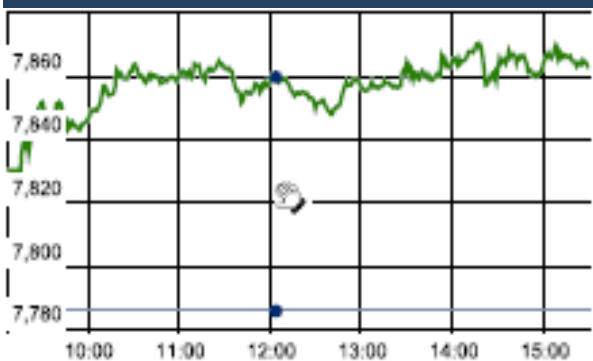
Warren Buffett

Chart of the Day

Indian Current Account Balance



Index Action Nifty (23th Dec 15)



Index

Contents	Page	Coverage
News	2	Update
Economic Calendar	3	Update

Market

Name	Value	Change
Sensex	25,850.30	259.65
Nifty	7865.95	79.85
DOW	17,602.61	185.34
NASDAQ	5,045.93	44.82
CAC	4,674.53	106.53
DAX	10,727.64	238.89
FTSE	6,240.98	157.88
NIKKEI	18,935.65	48.95
HANG SENG	22,150.59	110.00
EW ALL SHARE	13874.66	112.38

Instituional Turnover

FII

Investor	Buy(Cr.)	Sale(Cr.)	Net(Cr.)
23-Dec-15	2426.42	2040.60	385.82
Dec,15	49696.72	52880.02	(3183.30)
2015	1100339.26	1116363.05	(16023.79)

DII

Investor	Buy(Cr.)	Sale(Cr.)	Net(Cr.)
23-Dec-15	1743.36	1110.72	632.64
Dec,15	28512.58	20008.44	8504.14
2015	454344.85	388385.54	65959.31

Commodity Price

Commodity/Currencies	Value	
GOLD	25067.00	↓
SILVER	34215.00	↓
CRUDEOIL	37.71	↑
COPPER	312.80	↑
NATURALGAS	128.80	↑
DOLLAR/RS.	66.21	↑
EURO/RS.	72.22	↑
POUND/RS.	98.29	↑

Market Snapshot

Top Price Performers

Top Performers 1D	% Change	Top Performers 1W	% Change	Top Performers 1M	% Change
FACORALL	20.00	SPENTEX	76.34	DONEAR	112.05
SUNDARAM	20.00	PIRLIFE	56.53	RAMANEWS	109.07
SALSTEEL	20.00	PARACABLES	52.59	GEMINI	107.84
FOURSOFT	19.98	ALCHEM	49.90	RUBYMILLS	96.37
CHROMATIC	19.76	CHROMATIC	47.10	PIRLIFE	93.02

Worst Performers 1D	% Change	Worst Performers 1W	% Change	Worst Performers 1M	% Change
BSLIMITED	(7.26)	SHRENUJ	(26.39)	SHRENUJ	(43.77)
SURANACORP	(6.67)	PRITI	(18.67)	AMTEKINDIA	(38.41)
GARWARPOLY	(5.87)	AMTEKINDIA	(18.58)	SUDAR	(34.93)
REMIMETAL	(5.43)	COMMEXTECH	(17.31)	SEZAL	(31.05)
SURAJLTD	(5.41)	LPDC	(13.48)	KGNIND	(30.07)

Top News

- **Natco Pharma and its US partner Allergan** have settled a pending litigation with biopharmaceutical firm Celgene regarding generic Lenalidomide capsules used for treatment of multiple myeloma. Celgene has agreed to provide Natco with a license to Celgene's patents required to manufacture and sell an unlimited quantity of generic Lenalidomide in the United States beginning January 31, 2026
- **Bank of India** said it will raise up to Rs 3,000 crore by issuing tier-II bonds. The bank intends to issue unsecured, non-convertible, redeemable, Basel III-compliant tier-II bonds for an amount of Rs 1,500 crore with a green-shoe option of Rs 1,500 crore at an appropriate time
- **Larsen & Toubro (L&T)** has bagged orders worth Rs 1,178 crore across various segments so far this month. The company said its Metallurgical and Material Handling business has secured orders worth Rs 663 crore while its Power Transmission and Distribution business has won orders worth Rs 515 crore in both international and domestic markets.
- **Coal India** signs MoU with railways for procurement of 33 rakes Coal Minister Says Procurement Of 33 Rakes Will Lead To Additional Coal Loading Additional Coal Loading Of 8-10 mt Coal Per Wagon
- **Idea Cellular** has launched 4G LTE services across the southern states, becoming the last of the top incumbent telcos to offer high-speed data connectivity in the country ahead of the roll out of telecom services by Mukesh Ambani-led Reliance Jio Infocomm. Idea's 4G services are now available in Andhra Pradesh, Karnataka, Kerala, Tamil Nadu and Telangana. In the first phase, the telco's high-speed 4G network will be available across 75 towns. By June 2016, the 4G footprint will cover 750 cities across 10 telecom circles,
- **The Reserve Bank** has allowed foreign institutional investors to buy up to 49 percent stake in V-Mart Retail . The central bank said the foreign shareholding by FIIs/RFPs in V-Mart Retail have gone below the revised threshold limit.
- **DLF** has received Rs 1,992 crore from Singapore's sovereign wealth fund GIC, thereby completing the deal to sell 50 percent stake each in two upcoming projects in the national capital. The company would use this fund to boost cash flow and reduce debt, which stood at Rs 22,520 crore in September end.
- **Apollo Hospitals Enterprise** has issued a Letter of Comfort for an aggregate sum of Rs 50 crores to Axis Bank Limited the sanction of credit facilities in favour of its subsidiary, "Apollo Rajshree Hospitals Pvt Ltd, Indore"
- **German Producer Price Inflation** fell to a seasonally adjusted annual rate of -0.2%, from -0.4% in the preceding month. Analysts had expected German Producer Price Inflation to fall -0.2% last month.
- **U.K. Index of Services** rose to 0.5%, from 0.7% in the preceding month. Analysts had expected U.K. Index of Services to rise 0.6% last month.
- **U.K.'s Office for National Statistics** said gross domestic product expanded at a seasonally adjusted rate of 0.4% in the three months ended September 30, missing forecasts for 0.5%. Preliminary estimates initially pegged U.K. growth at 0.5%.The U.K.'s economy grew by 0.7% in the preceding quarter.
- **U.K. business investment remained** unchanged at a seasonally adjusted 2.2%, from 2.2% in the preceding quarter. Analysts had expected U.K. business investment to remain unchanged at 2.2% in the last quarter.
- **U.K. current account balance** fell to a seasonally adjusted -17.5B, from -17.5B in the preceding month whose figure was revised down from -16.8B. Analysts had expected U.K. current account balance to fall -21.5B last month.
- **Norwegian Unemployment Rate remained unchanged** at a seasonally adjusted annual rate of 4.6%, from 4.6% in the preceding month.

Economic Calendar

Country	Monday 21th Dec 15	Tuesday 22th Dec 15	Wednesday 23th Dec 15	Thursday 24th Dec 15	Friday 25th Dec 15
US	Final GDP q/q , Final GDP Price Index q/q , HPI m/m , Flash Manufacturing PMI , Existing Home Sales , Richmond Manufacturing Index .	Core Durable Goods Orders m/m ,Core PCE Price Index m/m ,Durable Goods Orders m/m , Personal Spending m/m , New Home Sales , Crude Oil Inventories .	Unemployment Claims , Revised UoM Consumer Sentiment , Revised UoM Inflation Expectations , Natural Gas Storage .		Holiday
UK/EURO ZONE	French Flash Manufacturing PMI , GfK German Consumer Climate , French Flash Services PMI , German Flash Manufacturing PMI , German Flash Services PMI , Flash Manufacturing PMI , Flash Services PMI m, Public Sector Net Borrowing .	Current Account , Final GDP q/q , Core Retail Sales m/m , GDP m/m ,	BBA Mortgage Approvals .	Italian 10-y Bond Auction	Holiday
INDIA					



SEBI Registered Portfolio Manager

(Regn. No. : INP 000004011)

Narnolia Securities Ltd.

Narnolia Research Lab

Stellar IT Park | 5th Floor | Office Space No. 6 | Tower-II|nd Plot No. C-25 | Sector-62 | Noida | Ph : 0120-4215110

Central Strategy Desk - Kolkata

124 | 1st Floor | 7/1 Lords Sinha Road | Kolkata - 71
Ph : 033-22821500 | M : 93347 14418, 98302 69810