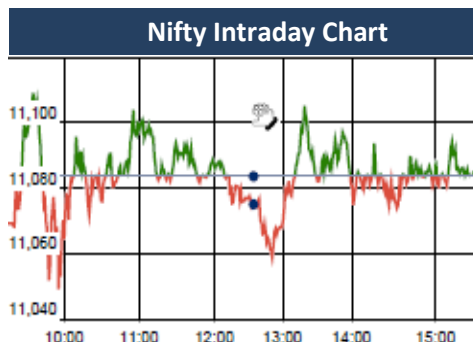


KEY LEVELS

Support 1 : 11039
Support 1 : 10782

Resistance 1 : 11200



Market Outlook

Yesterday we have seen a range bound and choppy movement of Indian equities and after opening on a flat note, Nifty traded in the band of 11046-11110. At the end of the day the index closed near flat at 11086. The midcap and small cap indices under-performed the benchmark index and closed the day after losing 0.3%-0.9%.

On the sectoral front, Information Technology and PSU banking stocks were on the buyers' radar while Metal and Auto indices closed in red.

Investor sentiment continues to be highly positive. Nifty put writers are writing options of higher strike price almost as quickly as Nifty makes newer high. On-going Q3 quarter results are unfolding almost in-line with the street expectations. And double-digit growth for Nifty EPS in FY18 is almost secured. The breadth of the market was negative and about two shares declines for every share advanced at NSE.

Though there does not yet appear any threat to this on-going rally in terms of market technicals, it's worth to remember that stock market can never be a one-way street. So it would be prudent to continue trading long but with trailing stop loss. Post fresh gap made again this Monday, Nifty trend reversal level gets shifted upward to 10,782

Quote of the Day : "You do things when the opportunities come along. I've had periods in my life when I've had a bundle of ideas come along, and I've had long dry spells. If I get an idea next week, I'll do something. If not, I won't do a damn thing." **Warren Buffett**

Market

Market	Value	% Change
Morning Traded Market		
SGX NIFTY	11,105.00	0.26%
NIKKIE	23,810.97	-0.55%
HANG SENG	32,979.38	0.06%
Yesterday Closing Market		
Sensex	36,161.64	0.06%
Nifty	11,086.00	0.02%
DOW	26,252.12	0.16%
NASDAQ	7,415.06	-0.61%
CAC	5,495.16	-0.73%
DAX	13,414.74	-1.08%
FTSE	7,643.43	-1.16%
EW ALL SHARE	20,620.66	-0.19%

% Change in 1 day

Commodity Price (Yesterday Closing)

Commodity/Currencies	Value	% Change
GOLD	30277.00	1.22%
SILVER	39711.00	2.52%
CRUDEOIL	70.90	0.24%
NATURALGAS	196.00	0.67%
DOLLAR/RS.	63.69	-0.14%
EURO/RS.	78.53	0.53%
POUND/RS.	89.83	0.93%

% Change in 1 day

Institutional Turnover

FII			
Investor	Buy(Cr.)	Sale(Cr.)	Net(Cr.)
24-Jan-18	7723	6947	776
Jan-18	103429	94848	8581
2018	103429	94848	8581
DII			
Investor	Buy(Cr.)	Sale(Cr.)	Net(Cr.)
24-Jan-18	5436	5630	(194)
Jan-18	71194	70932	261
2018	71194	70932	261

Event Today

Interim Dividend

SIEMENS : Rs 7/-

(Ex Date : 25. 1.2018)

Result

AJANTPHARM , APLAPOLLO , CHMBBRW , DBSTOCKBRO , DMART , DRREDDY , INDOCO , JINDALSTEL , L&TFH , LICHSFIN , MARUTI , NILKAMAL , RSSOFTWARE , SHARDACROP , SQSBFSI , TARAJEWELS , TATACOFFEE , UNIPHOS , UPL , VIPIND

Concall

Biocon : 9:00 PM

Cont Corp , KEI , Saregama : 11:00 PM

Music Broadcast : 11:30 PM

Sagar Cem : 12:00 PM , Mphasis : 12:30 PM

Orient Green : 2:00 PM , HIL : 3:00 PM

Motilal Oswal , VIP Inds : 4:00 PM

Indoco , UPL , Raymond , Dishman : 4:00 PM

Pidilite , Geojit : 5:00 PM

Eris Lifescienc : 6:00 PM

Dr Reddy' : 6:30 PM

CAPF**"Terminate
Coverage"****25th Jan 2018**

From being a wholesale financier NBFC, CAPF has transformed itself into a diversified retail finance company after a buyout of management in 2012. AUM has grown at a CAGR of 26% over FY12 to FY17 with being a niche player in MSME segment. Boards of CAPF and IDFC Bank have approved for the merger of two entities at 139:10 swap ratio where shareholders of CAPF will receive 139 shares of IDFC Bank for every 10 shares held. However this merger waits for regulatory approval and we believe it will take around 9 to 12 months to complete. We believe the merger would provide long term benefits for shareholders of the company; we maintain our earlier target price of Rs 925 (3x BVPS FY19E) and due to impending merger with IDFCBANK, we terminate our coverage of CAPF post this report.

CANFINHOME**"NEUTRAL"****25th Jan 2018**

CANFINHOME loan book has got impacted due to uncertainty over RERA in Karnataka and Kerala which constitute 50% of the business. The slowdown in demand was mainly on account of purchase deferment by customer on the hope of price correction in real estate. There has been supply side issue as well on affordable segment. Factoring lower than expected recovery in loan book and margin pressure, we are reducing our FY19e earnings estimate by 15% and our RoE estimate for FY19 will reduce from 27% to 23%, hence considering decline in RoE we reduce our valuation multiple to 4x from 5x and value CANFINHOME at Rs 483 on FY19 BVPS. We downgrade CANFINHOME to NEUTRAL.

*For details, refer to our daily report- *India Equity Analytics***Top News****>> Jindal Saw 3QFY18 Concall highlights:**

>> EBITDA to sales ratio fell because of change in contract structure. Pre –GST regime job work was included in top line & Raw material prices were pass through. In GST regime all the contract for water were executed by way of job work are all now executed as normal contract. Therefore, top line now includes raw material prices as well.

>> And, execution of more water project which are of lower margin (large dia) than oil & gas project. Combination of high execution of water pipeline project & collapse of pre GST contract structure led to fall in EBITDA to sales ratio.

>> Exceptional loss of Rs.30 cr was because of sale of last two ships that company had, Which completed the exit from water way business.

>> Current order book of 1.2 million ton.

>> No major capex on the horizon.

>> Expected to produce more than million ton for FY18. Expect volume growth of 15-20% in FY19.

>> Stainless business picking up very good, currently going through pre-qualification & up gradation process. Sharp growth in stainless business expected and company hopes to become among top three players in one year.

>> Growth drivers are expected to be through value addition and cost control.

>> Expects Middle East market to open up.

>> Company looking up for opportunities in East Africa, Egypt, Vietnam, Singapore.

>> Export market likely to improve in near future.

>> Raw material prices firmed up and company has been successful in passing it on with increase in pipe prices.

>> ONGC continues to be a strong client, new order on seamless front.

>> Increase in demand from water pipeline projects.

>> **Hester Biosciences Mgt Guideline** : The poultry business in the domestic segment has grown by around 9.28 percent while the large animal division has grown by 22 percent.

Q4 is mainly the quarter in which the government tenders are released and the execution of orders take place. So in Q4, Company will definitely have higher sales for the products.

Export is an important segment. In sales, there has been lesser growth than expected. Africa is the main area of export for the company. Company is setting up our own distribution network

The different states have different tendering processes. The tendering business in poultry across India is very small.

>> **GNFC Mgt Guideline** : The company saw significant revenue growth and margin improvement owing to higher toluene di-isocyanate (TDI) price. TDI plant utilisation has increased to 87 percent from 85 percent.

The TDI volume is up 10 percent year-on-year (YoY).

On Dahej plant front, Company said that the TDI plant which was shut down due to certain technical problems, Company have restarted that plant and the production has also started.

Company has enough export orders for next two months. TDI exports has been steadily on the rise. Methanol, Ethyl Acetate have crossed sales realisation in nine months

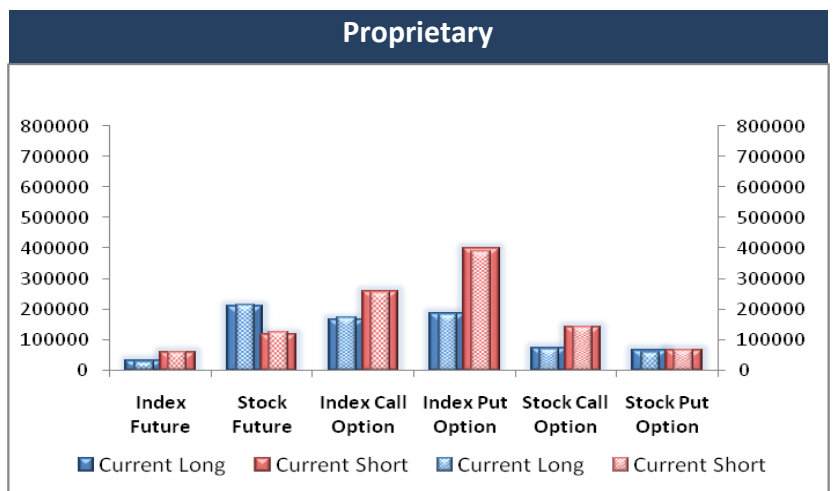
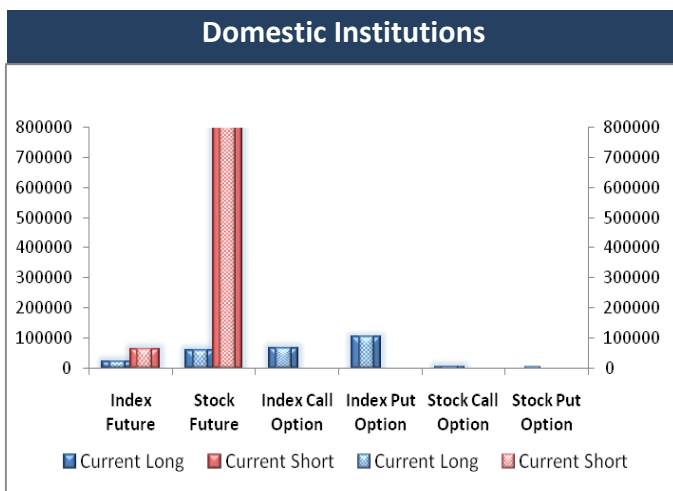
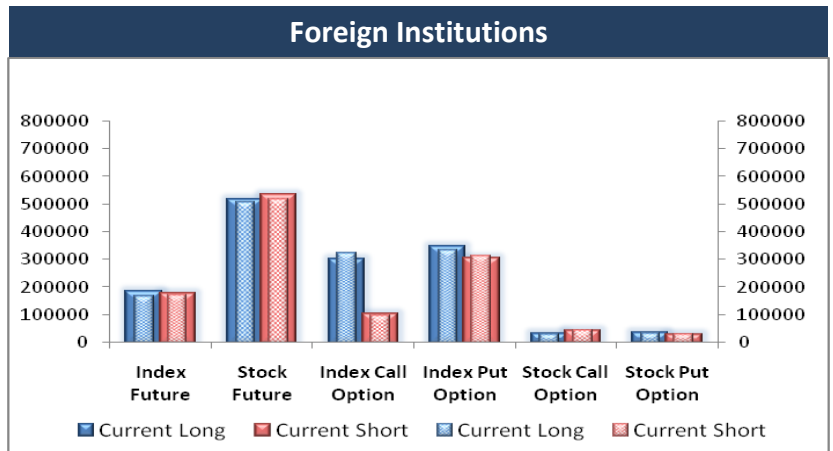
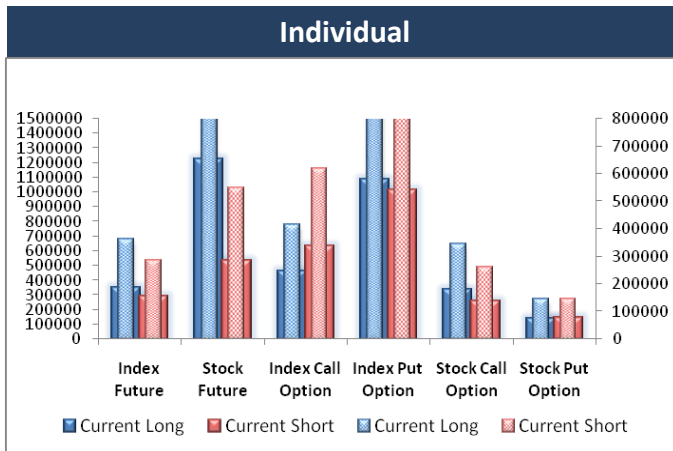
>> **Shemaroo Entertainment Mgt Guideline** : The explosion in data, consumers can watch videos anywhere and the next leg of growth is expected to come from online streaming. Company believe the traditional media industry should grow at double-digit rate. The digital media industry is growing at 30-35 percent currently.

Company hope higher consumption will lead to higher monetisation. Company clocked 400 million YouTube views in the month of September. Company has been recording an average of 17 million views on YouTube every day

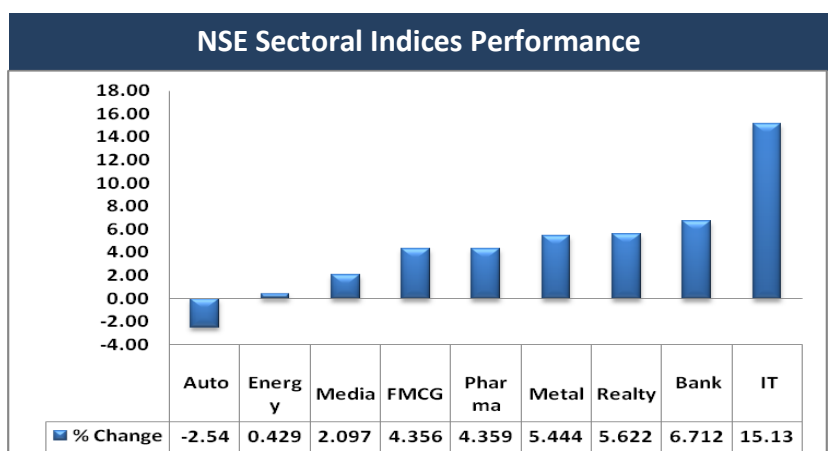
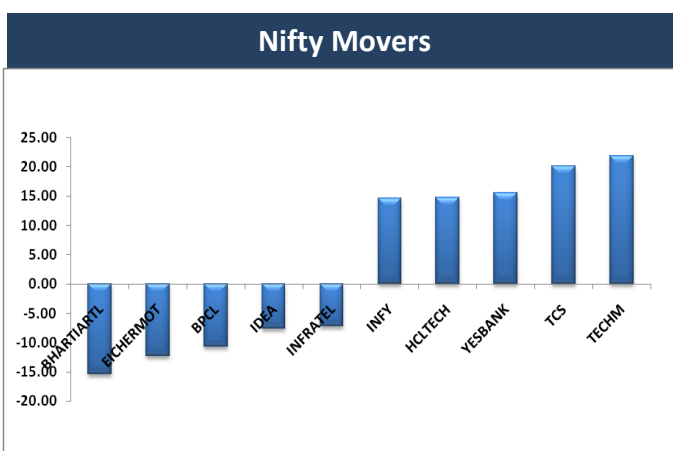
Block Deal

Exchange	Deal Date	Company	Client Name	Deal Type	Quantity	Price
NSE	24-Jan-18	AKASH	NIRAV VIKRAM MANIAR	BUY	100000	76
NSE	24-Jan-18	CEREBRAINT	POOJA ARVIND GOYAL	BUY	632823	54
NSE	24-Jan-18	CYIENT	GOLDMAN SACHS INDIA FUND LTD	BUY	1650000	630
NSE	24-Jan-18	HITECH	GIRIK WEALTH ADVISORS PRIVATE LTD PMS	BUY	281000	350
NSE	24-Jan-18	HITECH	JITENDRA BANTHIA	BUY	55000	351
NSE	24-Jan-18	HITECH	VRAJ ENTERPRISES	BUY	171000	370
NSE	24-Jan-18	INDBANK	RONAK BANSAL	BUY	519421	35
NSE	24-Jan-18	INNOVANA	RAMESHBHAI CHINUBHAI SHAH	BUY	30000	164
NSE	24-Jan-18	INNOVATIVE	PURITY TRADEMAX LLP	BUY	111000	64
NSE	24-Jan-18	KAMATHOTEL	ANKITA VISHAL SHAH	BUY	118089	154
NSE	24-Jan-18	KOPRAN	ARKAYA INVESTMENTS	BUY	389485	79
NSE	24-Jan-18	MOHITIND	AJAY NATHWANI	BUY	231094	44
NSE	24-Jan-18	MOHITIND	DEEPAK PARSHARAM SALVI	BUY	200000	45
NSE	24-Jan-18	RELIABLE	RAMESHBHAI CHINUBHAI SHAH	BUY	48000	64
NSE	24-Jan-18	RELIABLE	RISHWA D HARIYANI	BUY	48000	64
NSE	24-Jan-18	CAREERP	DHWAJA SHARES & SECURITIES PRIVATE LIMITED	SELL	93780	127
NSE	24-Jan-18	CEREBRAINT	POOJA ARVIND GOYAL	SELL	632823	55
NSE	24-Jan-18	CYIENT	DEUTSCHE SECURITIES MAURITIUS LIMITED	SELL	5455856	630
NSE	24-Jan-18	HDIL	ADIAN EMERGING MARKETS SMALL-CAP EQUITY FUND L	SELL	2486657	60
NSE	24-Jan-18	HITECH	AVR TRENDS INTERNATIONAL PVT LTD	SELL	150000	350
NSE	24-Jan-18	HITECH	CHAND RANI	SELL	63000	371
NSE	24-Jan-18	HITECH	EVEREST GROW MORE FINANCE PRIVATE LIMITED	SELL	200000	351
NSE	24-Jan-18	HITECH	JITENDRA BANTHIA	SELL	5000	356
NSE	24-Jan-18	HITECH	VRAJ ENTERPRISES	SELL	171000	353
NSE	24-Jan-18	INDBANK	RONAK BANSAL	SELL	519421	36
NSE	24-Jan-18	INDOCO	INDIA WHIZDOM FUND	SELL	588800	280
NSE	24-Jan-18	INNOVANA	AIRAN LIMITED	SELL	30000	164
NSE	24-Jan-18	INNOVANA	RAMESHBHAI CHINUBHAI SHAH	SELL	30000	172
NSE	24-Jan-18	INNOVATIVE	PURITY TRADEMAX LLP	SELL	111000	65
NSE	24-Jan-18	KAMATHOTEL	ANKITA VISHAL SHAH	SELL	118089	156
NSE	24-Jan-18	KOPRAN	ARKAYA INVESTMENTS	SELL	342253	78
NSE	24-Jan-18	MOHITIND	AJAY NATHWANI	SELL	201677	45
NSE	24-Jan-18	MOHITIND	DEEPAK PARSHARAM SALVI	SELL	100000	45
NSE	24-Jan-18	RELIABLE	ELITE ACCFIN SOLUTIONS PRIVATE LIMITED	SELL	50000	64
NSE	24-Jan-18	RELIABLE	RAMESHBHAI CHINUBHAI SHAH	SELL	48000	68
NSE	24-Jan-18	VIRESHINFO	AGRATA REAL ESTATE PRIVATE LIMITED	SELL	35482500	0

F&O OPEN INTEREST (Number of Contracts)



MARKET MOVERS (1 MONTH CHANGE)



Result Calendar Q3FY18

Bse Code	Company Name	Date	Bse Code	Company Name	Date
512165	ABASENT	25-Jan-18	530445	SUMERUIND	25-Jan-18
532762	ACE	25-Jan-18	534756	TARAJEWELS	25-Jan-18
513149	ACROW	25-Jan-18	532301	TATACOFFEE	25-Jan-18
532331	AJANTPHARM	25-Jan-18	532410	TRANSCOR	25-Jan-18
531581	ALKADIA	25-Jan-18	504273	TUMUSEL	25-Jan-18
501622	AMALGAM	25-Jan-18	500429	UNIPHOS	25-Jan-18
531252	ANERI	25-Jan-18	512070	UPL	25-Jan-18
533758	APLAPOLLO	25-Jan-18	531234	VICTORYPP	25-Jan-18
539301	ARVSMART	25-Jan-18	507880	VIPIND	25-Jan-18
508933	AYMSYNTEX	25-Jan-18	512345	YASTF	25-Jan-18
526849	BANARBEADS	25-Jan-18	532406	AVANTEL	27-Jan-18
509438	BENARAS	25-Jan-18	500069	BNKCAP	27-Jan-18
530803	BHAGIL	25-Jan-18	530755	CORNE	27-Jan-18
512301	CHMBBRW	25-Jan-18	532488	DIVISLAB	27-Jan-18
538786	CIL	25-Jan-18	514358	EVERLON	27-Jan-18
524506	CORALAB	25-Jan-18	531505	INDERGR	27-Jan-18
533167	COROENGG	25-Jan-18	536709	INDRENEW	27-Jan-18
530067	CSLFINANCE	25-Jan-18	500220	JASCH	27-Jan-18
530393	DBSTOCKBRO	25-Jan-18	590078	MAITHANALL	27-Jan-18
540376	DMART	25-Jan-18	531221	MAYURFL	27-Jan-18
500124	DRREDDY	25-Jan-18	538964	MERCURYLAB	27-Jan-18
526227	FILATEX	25-Jan-18	539767	MNIL	27-Jan-18
540267	FLORACORP	25-Jan-18	533179	PERSISTENT	27-Jan-18
540798	FSC	25-Jan-18	526490	PRATIK	27-Jan-18
505725	HINDEVER	25-Jan-18	515127	RAMMA	27-Jan-18
532612	INDOCO	25-Jan-18	519413	RUIAAQA	27-Jan-18
532286	JINDALSTEL	25-Jan-18	511640	SANGHCO	27-Jan-18
506528	KELENRG	25-Jan-18	534680	SRGHFL	27-Jan-18
507598	KLRF	25-Jan-18	511218	SRTRANSFIN	27-Jan-18
523207	KOKUYOCLN	25-Jan-18	533227	AHLEAST	28-Jan-18
533519	L&TFH	25-Jan-18	526833	ANNTHMS	28-Jan-18
500253	LICHSGFIN	25-Jan-18	505036	ACGL	29-Jan-18
524748	LINKPH	25-Jan-18	505216	ALFREDHE	29-Jan-18
532500	MARUTI	25-Jan-18	524634	ALUFLUOR	29-Jan-18
530497	MARVEL	25-Jan-18	532259	APARINDS	29-Jan-18
531727	MENNPIS	25-Jan-18	512642	ARTIBIOIN	29-Jan-18
523385	NILKAMAL	25-Jan-18	520119	ASAL	29-Jan-18
519494	NKIND	25-Jan-18	532493	ASTRAMICRO	29-Jan-18
530071	PARSOLI	25-Jan-18	540824	ASTRON	29-Jan-18
532988	RANEENGINE	25-Jan-18	530999	BALAMINES	29-Jan-18
517447	RSSOFTWARE	25-Jan-18	500059	BINANIIND	29-Jan-18
526477	SAENTER	25-Jan-18	532485	BLIL	29-Jan-18
538666	SHARDACROP	25-Jan-18	524440	CAMEXLTD	29-Jan-18
532498	SHRIRAMCIT	25-Jan-18	500040	CENTURYTEX	29-Jan-18
533121	SQSBFSI	25-Jan-18	539681	DAL	29-Jan-18
516108	STHINPA	25-Jan-18	590031	DENORA	29-Jan-18

503681	ELCIDIN	29-Jan-18	523222	SRMENERGY	29-Jan-18
522074	ELGIEQUIP	29-Jan-18	532348	SUBEX	29-Jan-18
531162	EMAMILTD	29-Jan-18	500405	SUPPETRO	29-Jan-18
532737	EMKAY	29-Jan-18	530185	SURATEX	29-Jan-18
500246	ENVAIREL	29-Jan-18	531003	SWRNASE	29-Jan-18
531600	GOGIACAP	29-Jan-18	531173	SYSCHEM	29-Jan-18
513309	GOLKONDA	29-Jan-18	532755	TECHM	29-Jan-18
517372	GUJINTRX	29-Jan-18	505854	TRF	29-Jan-18
532457	GULPOLY	29-Jan-18	521064	TRIDENT	29-Jan-18
508956	HBLEAS	29-Jan-18	532156	VAIBHAVGBL	29-Jan-18
532216	HBSTOCK	29-Jan-18	532300	WOCKPHARMA	29-Jan-18
500010	HDFC	29-Jan-18	532056	ADIEXRE	30-Jan-18
500184	HSCL	29-Jan-18	511359	ADMANUM	30-Jan-18
500187	HSIL	29-Jan-18	517552	ADVNCMIC	30-Jan-18
532659	IDFC	29-Jan-18	531761	APOLLOPIPES	30-Jan-18
533047	IMFA	29-Jan-18	533271	ASHOKA	30-Jan-18
511473	INDBANK	29-Jan-18	500028	ATVPR	30-Jan-18
523465	INDBNK	29-Jan-18	540611	AUBANK	30-Jan-18
532240	INDNIPPON	29-Jan-18	532380	BABA	30-Jan-18
506222	INEOSSTYRO	29-Jan-18	539251	BALKRISHNA	30-Jan-18
532706	INOXLEISUR	29-Jan-18	500049	BEL	30-Jan-18
519606	INTEGFD	29-Jan-18	531340	BERVINL	30-Jan-18
500458	KORE	29-Jan-18	533228	BHARATFIN	30-Jan-18
540222	LAURUSLABS	29-Jan-18	524723	BIJHANS	30-Jan-18
500252	LAXMIMACH	29-Jan-18	531175	BLSINFOTE	30-Jan-18
526179	LUDLOWJUT	29-Jan-18	526612	BLUEDART	30-Jan-18
505320	LYNMC	29-Jan-18	534804	CARERATING	30-Jan-18
540768	MAHLOG	29-Jan-18	511243	CHOLAFIN	30-Jan-18
500266	MAHSCOOTER	29-Jan-18	507833	COMPUPN	30-Jan-18
506919	MAKERSL	29-Jan-18	526269	CRSTCHM	30-Jan-18
531319	MARUTISE	29-Jan-18	532927	ECLERX	30-Jan-18
539594	MISHTANN	29-Jan-18	500840	EIHOTEL	30-Jan-18
520059	MUNJALAU	29-Jan-18	532178	ENGINERSIN	30-Jan-18
524654	NATCAPSUQ	29-Jan-18	523754	EPCIN	30-Jan-18
513023	NBVENTURES	29-Jan-18	533296	FMNL	30-Jan-18
500672	NOVARTIND	29-Jan-18	531375	GCCLINP	30-Jan-18
535754	ORIENTCEM	29-Jan-18	538961	GENUSPAPER	30-Jan-18
532987	RBL	29-Jan-18	511676	GICHSGFIN	30-Jan-18
537254	RCIIND	29-Jan-18	500174	GLFL	30-Jan-18
532712	RCOM	29-Jan-18	532424	GODREJCP	30-Jan-18
532527	RKFORGE	29-Jan-18	533248	GPPL	30-Jan-18
512115	ROSEMER	29-Jan-18	509488	GRAPHITE	30-Jan-18
532886	SELMCL	29-Jan-18	533282	GRAVITA	30-Jan-18
531431	SHAKTIPUMP	29-Jan-18	517288	GUJARATPOLY	30-Jan-18
540673	SIS	29-Jan-18	532425	GULCHEM	30-Jan-18
503811	SIYSIL	29-Jan-18	530055	HRMNYCP	30-Jan-18
532872	SPARC	29-Jan-18	505726	IFBIND	30-Jan-18
530177	SPSINT	29-Jan-18	538835	INTELLECT	30-Jan-18
519238	SPTRSHI	29-Jan-18	504786	INVPRECQ	30-Jan-18

530965	IOC	30-Jan-18	530565	SSLFINANCE	30-Jan-18
511208	IVC	30-Jan-18	513517	STEELCAS	30-Jan-18
532705	JAGRAN	30-Jan-18	517168	SUBROS	30-Jan-18
523398	JCHAC	30-Jan-18	500403	SUNDRMFAST	30-Jan-18
517063	JETKINGQ	30-Jan-18	512527	SUPER	30-Jan-18
532771	JHS	30-Jan-18	509930	SUPREMEIND	30-Jan-18
570004	JISLDVREQS	30-Jan-18	530239	SUVEN	30-Jan-18
500219	JISLJALEQS	30-Jan-18	513434	TATAMETALI	30-Jan-18
532162	JKPAPER	30-Jan-18	539658	TEAMLEASE	30-Jan-18
530163	KERALAYUR	30-Jan-18	511730	TRCFIN	30-Jan-18
540680	KIOCL	30-Jan-18	511096	TVOLCON	30-Jan-18
526409	KKALPANAIND	30-Jan-18	532343	TVSMOTOR	30-Jan-18
534690	LAKSHVILAS	30-Jan-18	521226	UNIROYAL	30-Jan-18
517415	LEENEE	30-Jan-18	526113	UNRYLMA	30-Jan-18
500250	LGBBROSLTD	30-Jan-18	530401	VINYOFL	30-Jan-18
501874	MACKINN	30-Jan-18	501370	WALCHPF	30-Jan-18
532313	MAHLIFE	30-Jan-18	509046	ZLEENCON	30-Jan-18
539207	MANPASAND	30-Jan-18	512245	ZNIVITRD	30-Jan-18
530537	MANRAJH	30-Jan-18	539300	AKSPINTEX	31-Jan-18
523566	MARBU	30-Jan-18	531147	ALICON	31-Jan-18
513544	MSCTC	30-Jan-18	521097	AMARJOTHI	31-Jan-18
530119	NATRAJPR	30-Jan-18	507525	AMRITCORP	31-Jan-18
532504	NAVINFLUOR	30-Jan-18	533573	APLLTD	31-Jan-18
523558	NETWORK	30-Jan-18	532212	ARCHIES	31-Jan-18
524774	NGLFINE	30-Jan-18	500101	ARVIND	31-Jan-18
532698	NITINSPIN	30-Jan-18	500023	ASIANHOTNR	31-Jan-18
533273	OBEROIRLTY	30-Jan-18	531310	AVAILFC	31-Jan-18
530175	ODYSSEY	30-Jan-18	531591	BAMPSL	31-Jan-18
532391	OPTOCIRCUI	30-Jan-18	524687	BASANTGL	31-Jan-18
530365	ORIENTBELL	30-Jan-18	511698	BHAGYFN	31-Jan-18
514460	OSWAYRN	30-Jan-18	511501	BHARAT	31-Jan-18
532900	PAISALO	30-Jan-18	505688	BHARATGEAR	31-Jan-18
500302	PEL	30-Jan-18	531495	BLUECOAST	31-Jan-18
523648	PLASTIBLEN	30-Jan-18	502216	BOMBPOT	31-Jan-18
531870	POPULARES	30-Jan-18	531203	BRANDREAL	31-Jan-18
512105	PROAIMENT	30-Jan-18	504643	BWLLTD	31-Jan-18
533107	RNAVAL	30-Jan-18	532386	CALSOFT	31-Jan-18
505807	ROLCOEN	30-Jan-18	539230	CHEMIESYNT	31-Jan-18
501154	ROSEI	30-Jan-18	534758	CIGNITI	31-Jan-18
539561	ROXY	30-Jan-18	512018	CNIRESLTD	31-Jan-18
532939	RPOWER	30-Jan-18	531210	COLINZ	31-Jan-18
534618	SAL	30-Jan-18	532456	COMPUAGE	31-Jan-18
540719	SBILIFE	30-Jan-18	531067	CONTILI	31-Jan-18
507894	SCHABLON	30-Jan-18	522295	CONTROLPR	31-Jan-18
540425	SHANKARA	30-Jan-18	506395	COROMANDEL	31-Jan-18
500394	SOLCT	30-Jan-18	500096	DABUR	31-Jan-18
531548	SOMANYCERA	30-Jan-18	526443	DATASOFT	31-Jan-18
533301	SPYL	30-Jan-18	500119	DHAMPURSUG	31-Jan-18

Earning Estimate Q3FY18

BSE CODE	NSE CODE	Sales Rs Cr	Sales YoY	Pat Rs Cr	PAT YoY
24-Jan-18	RADIOCITY	76	4.70	14	17.00
24-Jan-18	BIOCON	1051	2.10	101	(41.00)
24-Jan-18	CANBK	2844	17.80	256	(20.40)
24-Jan-18	CAPF	501	50.20	86	39.40
24-Jan-18	CONCOR	1484	11.50	248	33.60
24-Jan-18	IDEA	6630	(23.50)	(1391)	Loss
24-Jan-18	INDIGO	6042	21.20	652	33.80
24-Jan-18	KPIT	913	9.90	50	5.40
24-Jan-18	LTI	1808	8.50	268	8.00
24-Jan-18	M&MFIN	999	33.90	250	LP
24-Jan-18	MPHASIS	1630	6.10	201	(1.70)
24-Jan-18	PIDILITIND	1521	14.00	223	10.30
24-Jan-18	QUESS	1440	40.30	50	62.10
24-Jan-18	SITICABLE	372	24.50	(19)	Loss
24-Jan-18	TTKPRESTIG	938	15.20	19	68.70
25-Jan-18	L&TFH	1144	22.50	381	40.70
25-Jan-18	AJANTPHARM	526	(1.30)	116	(18.70)
25-Jan-18	DMART	4241	27.00	236	55.60
25-Jan-18	DRREDDY	3664	(1.20)	341	(27.50)
25-Jan-18	JINDALSTEL	6144	10.10	(593)	Loss
25-Jan-18	LICHSGFIN	924	1.00	517	3.60
25-Jan-18	MARUTI	19260	14.20	2031	16.40
25-Jan-18	SHRIRAMCIT	901	18.10	203	28.90
27-Jan-18	DIVISLAB	989	3.00	233	(13.30)
27-Jan-18	PERSISTENT	790	5.90	86	5.30
27-Jan-18	SRTRANSFIN	1688	19.60	504	45.80

Result Q3FY18

BSE CODE	NSE CODE	Sales Rs Cr	Sales YoY	Pat Rs Cr	PAT YoY
538685	SHEMAROO	133	16.79	18	23.88
500367	RUBFILINTL	45	11.56	3	(6.81)
532432	MCDOWELL-N	2263	(7.46)	135	(8.74)
532974	BIRLAMONEY	42	66.28	3	(14.00)
530343	GENUSPOWER	200	9.01	13	9.75
509675	HIL	282	41.78	14	77.17
532960	IBSEC	238	156.97	70	563.36
539448	INDIGO	6178	23.89	762	56.38
500378	JINDALSAW	2114	55.50	96	19.29
500241	KIRLOSBROS	442	3.13	9	333.33
530813	KRBL	783	(2.04)	123	11.04
540005	LTI	1888	13.30	334	34.56
532720	M&MFIN	1834	5.73	342	2815.43
532892	MOTILALOFS	736	73.83	148	66.20
500680	PFIZER	456	(7.20)	87	39.54
532163	SAREGAMA	94	72.98	8	90.45
532790	TANLA	200	18.62	4	(69.62)

Economic Calendar					
Country	Monday 22th Jan 18	Tuesday 23th Jan 18	Wednesday 24th Jan 18	Thursday 25th Jan 18	Friday 26th Jan 18
US		Philly Fed Manufacturing Index , Flash Manufacturing PMI , Flash Services PMI , Richmond Manufacturing Index	HPI m/m , Existing Home Sales , Crude Oil Inventories	Goods Trade Balance,Prelim Wholesale Inventories m/m , New Home Sales, CB Leading Index m/m , Natural Gas Storage	Advance GDP q/q , Core Durable Goods Orders m/m , Advance GDP Price Index q/q , Durable Goods Orders m/m , Revised UoM Consumer Sentiment , Revised UoM Inflation Expectations
UK/EURO ZONE	German Buba Monthly Report ,Consumer Confidence,	French Flash Manufacturing PMI , French Flash Services PMI , German Flash Manufacturing PMI , German Flash Services PMI , Flash Manufacturing PMI , Flash Services PMI , Public Sector Net Borrowing ,GfK Consumer Confidence	Average Earnings Index 3m/y , Claimant Count Change , Unemployment Rate	Italian 10-y Bond Auction , CBI Realized Sales , Minimum Bid Rate , ECB Press Conference	Spanish Flash GDP q/q , Spanish Unemployment Rate , Prelim GDP q/q , High Street Lending , Index of Services 3m/3m , Italian Prelim CPI m/m
INDIA					



Narnolia Securities Ltd

201 | 2nd Floor | Marble Arch Building | 236B-AJC Bose
Road | Kolkata-700 020 , Ph : 033-40501500

email: narnolia@narnolia.com,
website : www.narnolia.com

Risk Disclosure & Disclaimer: This report/message is for the personal information of the authorized recipient and does not construe to be any investment, legal or taxation advice to you. Narnolia Securities Ltd. (Hereinafter referred as NSL) is not soliciting any action based upon it. This report/message is not for public distribution and has been furnished to you solely for your information and should not be reproduced or redistributed to any other person in any form. The report/message is based upon publicly available information, findings of our research wing "East wind" & information that we consider reliable, but we do not represent that it is accurate or complete and we do not provide any express or implied warranty of any kind, and also these are subject to change without notice. The recipients of this report should rely on their own investigations, should use their own judgment for taking any investment decisions keeping in mind that past performance is not necessarily a guide to future performance & that the the value of any investment or income are subject to market and other risks. Further it will be safe to assume that NSL and /or its Group or associate Companies, their Directors, affiliates and/or employees may have interests/ positions, financial or otherwise, individually or otherwise in the recommended/mentioned securities/mutual funds/ model funds and other investment products which may be added or disposed including & other mentioned in this report/message.