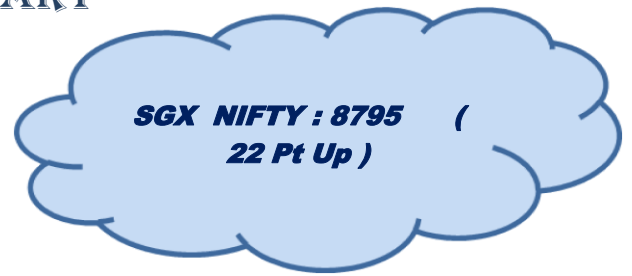


**Quote of the Day**

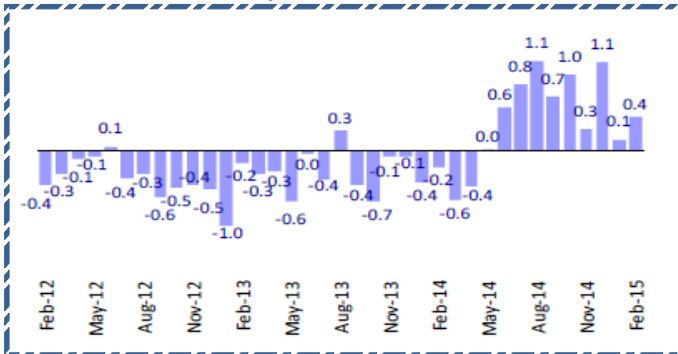
"We never want to count on the kindness of strangers in order to meet tomorrow's obligations. When forced to choose, I will not trade even a night's sleep for the chance of extra profits."

**Warren Buffett**

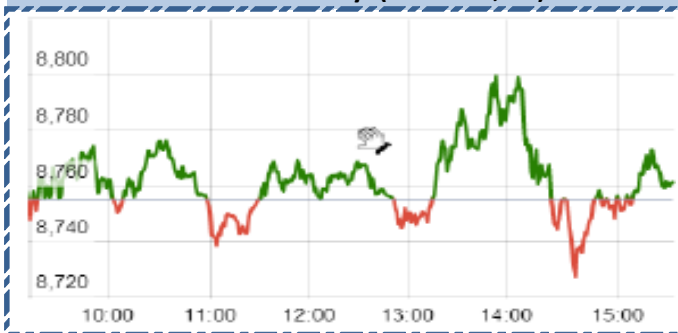


**Chart of the Day**

**Monthly Domestic MF Flow**



**Index Action-Nifty (24th Feb, 15)**



**Index**

Contents	Page	Coverage
News	2	UPDATE
Economic Calendar	3	UPDATE

**MARKET**

Name	Value	Change
Sensex	29004.66	29.55
Nifty	8762.1	7.15
DOW	18209.19	92.35
NASDAQ	4968.12	7.15
CAC	4886.44	24.14
DAX	11205.74	74.82
FTSE	6949.63	37.47
NIKIE	18618.77	15.29
HANG SENG	24756.39	6.32
EW ALL SHARE	14708.59	(9.25)

**INSTITUTIONAL TURNOVER**

FII			
Investor	Buy(Cr.)	Sale(Cr.)	Net(Cr.)
24th Feb	5482.29	4,785.01	697.28
Feb,15	74169.57	72,823.21	1346.36
2015	179320.78	1,67,368.18	11952.60
DII			
Investor	Buy(Cr.)	Sale(Cr.)	Net(Cr.)
24th Feb	1346.92	1,493.90	(146.98)
Feb,15	29185.57	26,601.07	2584.50
2015	64499.22	69,796.49	(5297.27)

**COMMODITY PRICE**

COMMODITY/CURRENCIES	Value	
GOLD	26071.00	↓
SILVER	36000.00	↓
CRUDEOIL	49.52	↓
COPPER	361.90	↑
NATURALGAS	184.00	↑
DOLLAR/RS.	62.20	↓
EURO/RS.	70.46	↓
POUND/RS.	96.06	↑

**Narnolia Securities Ltd.**

## Markets Snapshot

### Top Price Performers

Top Performers 1D	% Change	Top Performers 1W	% Change	Top Performers 1M	% Change
BILPOWER	18.60	BILPOWER	60.63	ISFT	90.59
BFINVEST	17.81	MOSERBAER	59.75	IL&FSENGG	82.48
HINDOILEXP	17.18	RMMIL	57.36	RICOHQ	73.26
FORTISFIN	16.95	BFINVEST	49.81	SUZLON	72.14
INVENTURE	16.37	TWL	41.09	TWL	67.68

### Worst Price Performers

Worst Performers 1D	% Change	Worst Performers 1W	% Change	Worst Performers 1M	% Change
REMIMETAL	(13.97)	SCANPGEOM	(32.91)	PRITHVI	(47.26)
KALINDEE	(12.62)	GEINDSYS	(20.92)	FARMAXIND	(44.88)
SUDAR	(12.41)	PRITHVI	(20.90)	STRAUSIND	(37.55)
SHREEKRPOL	(12.00)	STRAUSIND	(19.13)	SRSREAL	(37.00)
GNRL	(10.08)	SAMTEL	(18.18)	NEULANLAB	(34.91)

### Top News :

- **Emami Mgt Guideline** : Company is confident of surpassing their earlier growth guidance of 15-17 percent. With the ramp-up in production of the recently launched products in the next fiscal, there would marked improvement in the finances of the company . The company is actively looking for global and domestic acquisitions . The company is all set to strengthen its Zandu Healthcare base and expand its brand portfolio in FY16. It would be looking at new launches to help increase consumer spending.

- **NCC Mgt Guideline** : Company sees margins at 7.8 percent versus initial estimate of over 8 percent in FY15 . Going forward there is a residual order of about Rs 1,500 crore in the power vertical. That is likely to be completed in the next nine months. The right issue has been a success and nearly Rs 600 crore money has gone towards reduction of debt in the parent company's books. The debt-equity also improved nicely to about 0.7

- **VIP Industries Mgt Guideline** : The consumer demand hasn't been in sync with expectations and hence the company has had to downgrade FY15 sales guidance to 7.5 percent from 10-12 percent. Company is continuing to spend a lot on brand building as it has recently started promoting two new brands- Caprese and Carlton.

- **Piramal Enterprises Ltd** , will invest up to 50 billion rupees(USD 803 million) before March 2016 to finance construction projects . The projects are in Mumbai, Delhi, Bangalore, Pune and Chennai . The company will eventually expand financing to smaller cities such as Jaipur, Ahmedabad, Nagpur and Hyderabad

- **ABB India** became the first company to reach sales of a cumulative capacity of 1GW solar inverters. This milestone was marked today with the roll out of an order for Tata Power Solar s project for Kiran Energy Solar Power.

- **COAL India board** has directed the PSU to withdraw from International Coal Ventures Ltd. ICVL is a PSU consortium formed to acquire coal mines overseas. The company also said that its board gave approval for the first year expenditure of Rs 1,019 crore to start the work for setting up MCL's - Coal India arm - 2x800 mw coal-based super critical thermal power plant in Odisha.

- **IBM** has signed an agreement with IT services major Tech Mahindra to build a platform for the development of cloud-based apps for its clients on Bluemix to increase hybrid services adoption.

- **Eurostat said consumer price inflation** fell by a seasonally adjusted 0.6% last month, in line with expectations and unchanged from a preliminary estimate. Euro zone inflation declined by 0.2% in December

- **Statistisches Bundesamt Deutschland** said that German GDP rose to a seasonally adjusted 0.7%, from 0.7% in the preceding quarter. Analysts had expected German GDP to rise 0.7% in the last quarter.

- **French Business Confidence** rose to an annual rate of 99, from 100 in the preceding quarter whose figure was revised up from 99. Analysts had expected French Business Confidence to rise 99 in the last quarter.

- **Federal Statistical Office** said that Swiss employment level rose to a seasonally adjusted 4.230M, from 4.227M in the preceding quarter. Analysts had expected Swiss employment level to fall to 4.220M in the last quarter.

## Result Calendar Q3FY15

Bse Coade	Company Name	Date	Bse Coade	Company Name	Date
507525	AMRITCORP-\$	24-Feb-15	500024	ASSAMCO	27-Feb-15
500123	ELANTAS	24-Feb-15	530959	DIANATEA	27-Feb-15
509496	ITDCEM	24-Feb-15	500168	GOODYEAR	27-Feb-15
520113	VESUVIUS	24-Feb-15	500339	RAIN	27-Feb-15
500870	CASTROLIND	25-Feb-15	523888	VRWODAR	27-Feb-15
533266	TECPRO	25-Feb-15	532616	XCHANGING	27-Feb-15
517140	MOSERBAER	26-Feb-15	512299	STERLINBIO	28-Feb-15
531381	ARIHANT-\$	27-Feb-15	511626	RRFIN	14-Dec-15

## Economic Calendar

	Monday 23-Feb-15	Tuesday 24-Feb-15	Wednesday 25-Feb-15	Thursday 26-Feb-15	Friday 27-Feb-15	Saturday 28-Feb-15
US	Existing Home Sales , Flash Services PMI .	CB Consumer Confidence , Richmond Manufacturing Index .	Crude Oil Inventories .	CPI m/m , Core CPI m/m ,Core Durable Goods Orders m/m ,Unemployment Claims , Durable Goods Orders m/m , HPI m/m ,Natural Gas Storage .	Prelim GDP q/q , Chicago PMI , Pending Home Sales m/m , Revised UoM Consumer Sentiment .	
UK/EURO ZONE	German Ifo Business Climate , CBI Realized Sales .	EU Economic Forecasts , Final CPI y/y .	GfK German Consumer Climate ,BBA Mortgage Approvals	Nationwide HPI m/m , German Prelim CPI m/m , German Unemployment Change , M3 Money Supply y/y , Private Loans y/y, Targeted LTRO	Second Estimate GDP q/q , Prelim Business Investment q/q , Index of Services 3m/3m .	
INDIA				Railway Budget FY15-16	Economic Survey	Union Budget FY15-16



## Narnolia Securities Ltd

124, 1st floor 7/ 1, Lords Sinha Road Kolkata 700071, Ph 033-22821251 Toll Free no : 1-800-345-4000

email: [research@narnolia.com](mailto:research@narnolia.com),

website : [www.narnolia.com](http://www.narnolia.com)

**Risk Disclosure & Disclaimer:** This report/message is for the personal information of the authorized recipient and does not construe to be any investment, legal or taxation advice to you. Narnolia Securities Ltd. (Hereinafter referred as NSL) is not soliciting any action based upon it. This report/message is not for public distribution and has been furnished to you solely for your information and should not be reproduced or redistributed to any other person in any form. The report/message is based upon publicly available information, findings of our research wing "East wind" & information that we consider reliable, but we do not represent that it is accurate or complete and we do not provide any express or implied warranty of any kind, and also these are subject to change without notice. The recipients of this report should rely on their own investigations, should use their own judgment for taking any investment decisions keeping in mind that past performance is not necessarily a guide to future performance & that the the value of any investment or income are subject to market and other risks. Further it will be safe to assume that NSL and /or its Group or associate Companies, their Directors, affiliates and/or employees may have interests/ positions, financial or otherwise, individually or otherwise in the recommended/mentioned securities/mutual funds/ model funds and other investment products which may be added or disposed including & other mentioned in this report/message.