

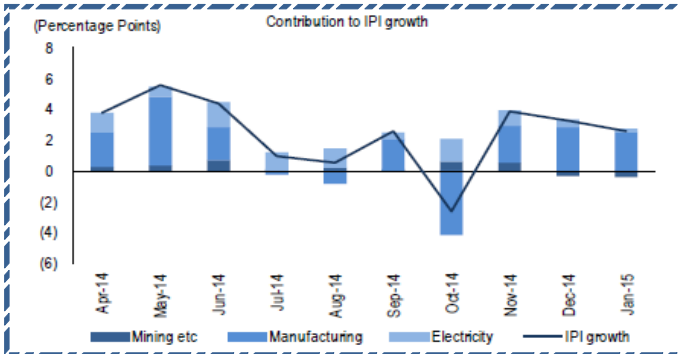
Quote of the Day

" You ought to be able to explain why you're taking the job you're taking, why you're making the investment you're making, or whatever it may be. And if it can't stand applying pencil to paper, you'd better think it through some more. And if you can't write an intelligent answer to those questions, don't do it." **Warren Buffett**

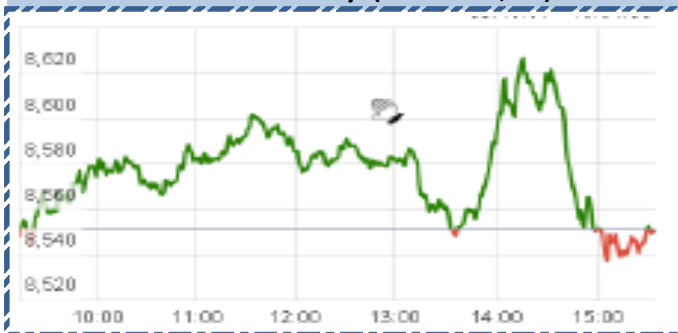
SGX NIFTY : 8587 (5 Pt Up)

Chart of the Day

IIP Trend



Index Action-Nifty (24th Mar, 15)



Index

Contents	Page	Coverage
News	2	UPDATE
Economic Calendar	3	UPDATE

MARKET		
Name	Value	Change
Sensex	28161.72	(30.30)
Nifty	8542.95	(7.95)
DOW	18011.14	(108.90)
NASDAQ	4994.73	(16.24)
CAC	5088.28	33.76
DAX	12005.69	109.65
FTSE	7019.68	(17.99)
NIKKEI	19676.07	(37.68)
HANG SENG	24447.07	47.47
EW ALL SHARE	14429.58	16.32

INSTITUTIONAL TURNOVER			
FII			
Investor	Buy(Cr.)	Sale(Cr.)	Net(Cr.)
24th Mar	4647.75	3,909.89	737.86
Mar,15	84551.50	78,058.00	6493.50
2015	288327.23	2,64,481.79	23845.44
DII			
Investor	Buy(Cr.)	Sale(Cr.)	Net(Cr.)
24th Mar	1858.13	2,489.80	(631.67)
Mar,15	28144.67	30,343.66	(2198.99)
2015	101931.06	1,10,299.50	(8368.44)

COMMODITY PRICE		
COMMODITY/CURRENCIES	Value	
GOLD	26375.00	↑
SILVER	37984.00	↑
CRUDEOIL	47.53	↑
COPPER	387.45	↑
NATURALGAS	173.60	↑
DOLLAR/RS.	62.26	↓
EURO/RS.	68.09	↓
POUND/RS.	92.66	↑

Narnolia Securities Ltd.

Markets Snapshot

Top Price Performers

Top Performers 1D	% Change	Top Performers 1W	% Change	Top Performers 1M	% Change
ANDHRAPET	19.75	KIRIINDUS	70.45	EUROCERA	91.31
PFOCUS	14.36	SCANPGEOM	28.26	SHLAKSHMI	76.36
TIDEWATER	13.46	ISIBARS	26.69	KIRIINDUS	73.03
EMKAY	12.83	EUROCERA	25.19	NATCOPHARM	56.57
ISIBARS	12.61	SAURASHCEM	22.80	SVCRES	47.37

Worst Price Performers

Worst Performers 1D	% Change	Worst Performers 1W	% Change	Worst Performers 1M	% Change
COUNCLB	(14.31)	COUNCLB	(35.72)	GSS	(46.52)
NEXTMEDIA	(12.41)	MANJEERA	(31.12)	COUNCLB	(45.17)
QUADRANT	(11.20)	KANANIIND	(28.10)	EDUCOMP	(43.52)
BIRLACOT	(11.11)	BILENERGY	(25.00)	GEMINI	(42.11)
KGL	(10.38)	ADSL	(23.56)	GEINDSYS	(40.53)

Top News :

- **Aarti Drugs Ltd has informed** that Two of the Aarti Drugs Ltd facilities in Tarapur have received an import alert dated March 23, 2015 as per the FDA website. However, only one of that is US FDA facility. Second one, we had already delisted from the US FDA website couple of years back. For the said E-22 facility, we had a re-inspection in August 2014. Post that, we submitted four responses starting Aug'14 and the last response in Feb'15. We still have to receive an official communication from US FDA on the import alert after which we can take immediate actions to rectify the same. The total US sales contributes to slightly less than 1% of the total sales volume. Hence this shouldn't affect our top-line and bottom-line significantly .

- **Punjab National Bank** has raised Rs. 1800 crores Long term bonds for Infrastructure (Project) Finance and Affordable Housing in the nature of debentures at an annual coupon of 8.35% on private placement basis on March 24, 2015 and same will mature on March 24, 2025.

- **Dr Reddy** has entered into an agreement with Hetero, under which Dr Reddy's has been licensed to distribute and market Sofosbuvir 400 mg tablets indicated in treatment of chronic Hepatitis C under the brand 'Resof' in India

- **The Reserve Bank of India (RBI)** has rejected Tata Sons' application to buy Tata Teleservices stake from Docomo at a price higher than current fair value of the stake

- **Fund Action** - Nava Bharat Ventures : Morgan Stanley Asia Singapore Pte buys 5.82 lakh shares at Rs 175/share . East Bridge Capital Master Fund buys 4.54 lakh shares at Rs 175/share . J Caird BMD MB sells 6.68 lakh shares at Rs 175/share . PAT Financial buys 2.07 lakh shares of Transpek Industry

- **Suven Life Sciences Limited** has received a product patent each from Canada, Japan and Korea corresponding to the new chemical entities (NCEs) for the treatment of disorders associated with neuro-degenerative diseases.

- **Seamec Ltd** has acquired a vessel by name "REVELATION" having Belize flag at a price of USD 2.6 million. The Vessel was taken over on March 19, 2015 at Singapore.

- **Capital First** announced today that it has raised Rs 300 crore through its first qualified institutional placement (QIP). The funds will be deployed for expansion of our existing businesses

- **U.S. Department of Labor said that consumer prices** increased by a seasonally adjusted 0.2% last month, meeting forecasts and following a drop of 0.7% in January.

- **The flash HSBC/Markit Purchasing Managers' Index (PMI)** dipped to 49.2 in March, below the 50-point level that separates growth in activity from contraction on a monthly basis. Economists polled by Reuters had forecast 50.6, slightly weaker than February's final PMI of 50.7.

- **U.K. Office for National Statistics** said that PPI input inched up by a seasonally adjusted 0.2% last month, below expectations for a gain of 1.6%.

- **Confederation of British Industry** said its index of industrial order expectations decreased by 10.0 points to a reading of 0.0 this month from February's reading of 10.0. Analysts had expected the index to decline by 1.0 point to 9.0 in March.

Economic Calendar

	Monday 23-Mar-15	Tuesday 24-Mar-15	Wednesday 25-Mar-15	Thursday 26-Mar-15	Friday 27-Mar-15
US	Existing Home Sales , Flash Services PMI .	CPI m/m , Core CPI m/m , CB Consumer Confidence , New Home Sales , Richmond Manufacturing Index .	Core Durable Goods Orders m/m , Durable Goods Orders m/m , Crude Oil Inventories .	Unemployment Claims , Natural Gas Storage .	Final GDP q/q , Final GDP Price Index q/q , Revised UoM Consumer Sentiment , Revised UoM Inflation Expectations .
UK/EURO ZONE	Consumer Confidence	German Ifo Business Climate , CPI y/y , PPI Input m/m , RPI y/y , CBI Realized Sales .	GfK German Consumer Climate , BBA Mortgage Approvals , FPC Statement .	M3 Money Supply y/y , Private Loans y/y , Retail Sales m/m .	French Consumer Spending m/m , Spanish Flash CPI y/y , Italian Retail Sales m/m .
INDIA					



Narnolia Securities Ltd

124, 1st floor 7/ 1, Lords Sinha Road Kolkata 700071, Ph 033-22821251 Toll Free no : 1-800-345-4000

email: research@narnolia.com,

website : www.narnolia.com

Risk Disclosure & Disclaimer: This report/message is for the personal information of the authorized recipient and does not construe to be any investment, legal or taxation advice to you. Narnolia Securities Ltd. (Hereinafter referred as NSL) is not soliciting any action based upon it. This report/message is not for public distribution and has been furnished to you solely for your information and should not be reproduced or redistributed to any other person in any form. The report/message is based upon publicly available information, findings of our research wing "East wind" & information that we consider reliable, but we do not represent that it is accurate or complete and we do not provide any express or implied warranty of any kind, and also these are subject to change without notice. The recipients of this report should rely on their own investigations, should use their own judgment for taking any investment decisions keeping in mind that past performance is not necessarily a guide to future performance & that the the value of any investment or income are subject to market and other risks. Further it will be safe to assume that NSL and /or its Group or associate Companies, their Directors, affiliates and/or employees may have interests/ positions, financial or otherwise, individually or otherwise in the recommended/mentioned securities/mutual funds/ model funds and other investment products which may be added or disposed including & other mentioned in this report/message.