

SGX NIFTY : 7897.50 (18 Pt Down)

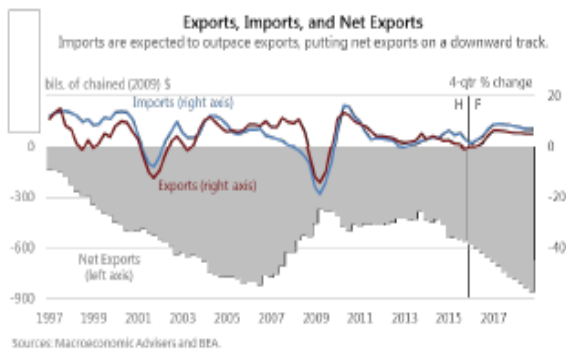
Quote of the Day

"Mathematics is ordinarily considered as producing precise and dependable results; but in the stock market the more elaborate and abstruse the mathematics, the more uncertain and speculative are the conclusions we draw therefrom."

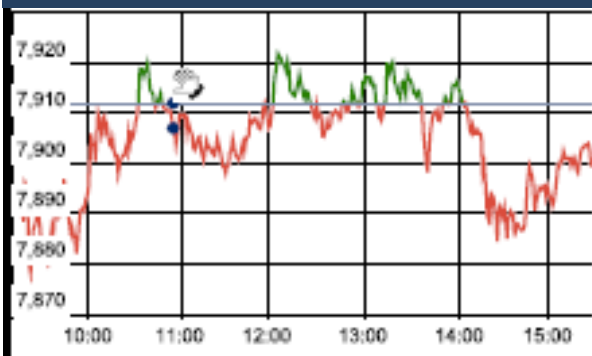
Benjamin Graham

Chart of the Day

Export Import Trend



Index Action Nifty (22th Apr 16)



Index

Contents	Page	Coverage
News	2	Update
Economic Calendar	3	Update

Market

Name	Value	Change
Sensex	25,838.14	(42.24)
Nifty	7899.30	(12.75)
DOW	18,003.75	21.23
NASDAQ	4,906.23	(39.66)
CAC	4,569.66	(13.17)
DAX	10,373.49	(62.24)
FTSE	6,310.44	(71.00)
NIKKEI	17,482.35	(90.14)
HANG SENG	21,467.04	(155.21)
EW ALL SHARE	13687.11	2.73

Instituional Turnover

FII

Investor	Buy(Cr.)	Sale(Cr.)	Net(Cr.)
22-Apr-16	3701.43	3510.36	191.07
Mar,16	49786.27	46989.86	2796.41
2016	300926.68	300140.96	785.72

DII

Investor	Buy(Cr.)	Sale(Cr.)	Net(Cr.)
22-Apr-16	1500.28	1668.92	(168.64)
Mar,16	19204.45	20178.69	(974.24)
2016	132695.57	126110.94	6584.63

Commodity Price

Commodity/Currencies	Value	
GOLD	29021.00	↓
SILVER	39985.00	↓
CRUDEOIL	43.11	↑
COPPER	334.50	↑
NATURALGAS	142.60	↑
DOLLAR/RS.	66.49	↑
EURO/RS.	74.93	↑
POUND/RS.	96.30	↑

Market Snapshot

Top Price Performers

Top Performers 1D	% Change	Top Performers 1W	% Change	Top Performers 1M	% Change
ALCHEM	20.00	OISL	68.94	KAKATCEM	129.38
PANCHMSTEL	17.40	BHARTISHIP	44.87	KIRIINDUS	95.97
J&KBANK	17.06	AMTEKAUTO	34.99	ELECTHERM	89.36
BODALCHEM	14.93	LAKSHMIEFL	30.81	UTTAMSUGAR	77.50
INDLMETER	14.31	RUBYMILLS	30.81	UGARSUGAR	73.77

Worst Performers 1D	% Change	Worst Performers 1W	% Change	Worst Performers 1M	% Change
CHROMATIC	(7.52)	RAINBOWPAP	(18.99)	VIVIMEDLAB	(79.23)
SAHARAHOUS	(7.34)	BSLIMITED	(18.02)	RAINBOWPAP	(63.77)
SUJANAUNI	(6.67)	SRSREAL	(17.76)	SHREEKRPOL	(43.59)
KSLIND	(6.16)	FIRSTOBJ	(17.01)	RICOHQ	(36.67)
PITTILAM	(5.96)	LLOYDMETAL	(16.89)	ABGSHIP	(35.54)

Top News

- **Cyient Mgt Guideline** : Company expects its core business to grow by 10 percent. Also, Bodanapu guides a 1.5 percent rise in the margins in FY17 after margins in FY16 were lower than expected. Cyient company dealing in service operations management, was also a major dissapointment in FY16, bringing lower than anticipated revenues. But Bodanapu expects it to do better in the future and says it is going to fetch them little over USD 20 million in the coming year. Cyient's oil and gas and mining business will continue to remain a challenge . Company contribute to only three to four percent of the revenues and should not affect the overall business.

- **Aurobindo Pharma** has received final approval from USFDA to manufacture and market Esomeprazole Magnesium delayed release capsules, used in treatment of gastroesophageal reflux disease, in the American market. The company said the launch of the product is based on the settlement terms/litigation outcome with AstraZeneca . The approved product has an estimated market size of USD 4.2 billion for the 12 months ended February 2016, according to IMS

- **Fund action** : Hinduja Power buys 10.98 lakh shares of GOCL Corporation at Rs 143.

Dinesh Chandra Shakra HUF sold 31,00,000 shares of Ruchi Soya Industries at Rs 29.97 on the NSE.

- **HCL Infosystems** will now be the Value Added Distributor for the entire portfolio of scanners offered by Fujitsu to customers across India. HCL Infosystems offers sales, marketing and last mile connect funder its value-added proposition.

- **Havells** has forayed into entry-level modular switches by launching Reo Bliss brand and eyes sales of Rs 100 crore in two-three years from the segmen . Havells is expecting an overall growth of 10 percent from the switch segment . With this launch, the company will enhance presence from 700 towns to 1,100 with population of 50,000 and above in the next two-three year . Company expect Reo Bliss to contribute around 25 per cent of switches revenues in the next two years.

- **Meghmani Organics** has started operations at its Bharuch plant, which is expected to add annual revenue of Rs 125 crore . EBITDA margin will be 30 percent for that new product. The company has won long-term pigments orders from MNCs that will help reduce the operating cost of the plant and overall business. Company expects to debt reduction of Rs 110 crore by FY17 through internal cash generation.

- **Canadian core CPI** rose to a seasonally adjusted 0.7%, from 0.5% in the preceding month. Analysts had expected Canadian core CPI to rise 0.3% last month.

- **Canadian consumer price inflation** rose to 0.6% on a monthly basis and before seasonal adjustment, from 0.2% in the preceding month. Analysts had expected Canadian consumer price inflation to rise 0.6% last month.

- **Canada said that retail sales** rose to 0.4%, from 2.0% in the preceding month whose figure was revised down from 2.1%. Analysts had expected retail sales to fall -0.8% last month.

- **Markit said that its Flash Euro Zone Composite** Output Index, which measures the combined output of both the manufacturing and service sectors slipped from 53.1 in March to 53.0 in April, below forecasts for 53.2.

- **Euro Zone Services PMI** rose to 53.2, from 53.1 in the preceding quarter. Analysts had expected Euro Zone Services PMI to rise to 53.3 in the last quarter.

- **German manufacturing PMI** rose to a seasonally adjusted 51.9, from 50.7 in the preceding month. Analysts had expected German manufacturing PMI to rise to 51.0 last month.

- **Flash Euro Zone Composite Output Index**, which measures the combined output of both the manufacturing and service sectors slipped from 53.1 in March to 53.0 in April, below forecasts for 53.2.

Result Calendar Q4FY16

BSE Code	Company Name	Date	BSE Code	Company Name	Date
500002	ABB	25-Apr-16	500150	FOSECOIND	27-Apr-16
513149	ACROW	25-Apr-16	532345	GATI	27-Apr-16
533167	COROENGG	25-Apr-16	532622	GDL	27-Apr-16
532848	DELTACORP	25-Apr-16	532706	INOXLEISUR	27-Apr-16
526899	HIMIN	25-Apr-16	533148	JSWENERGY	27-Apr-16
532832	IBREALEST	25-Apr-16	500165	KANSAINER	27-Apr-16
535789	IBULHSGFIN	25-Apr-16	505283	KIRLPNU	27-Apr-16
532191	SBT	25-Apr-16	532400	KPIT	27-Apr-16
531201	SHILCTECH	25-Apr-16	534690	LAKSHVILAS	27-Apr-16
513010	TATASPONGE	25-Apr-16	532710	SADBHAV	27-Apr-16
532538	ULTRACEMCO	25-Apr-16	522034	SHANTIGEAR	27-Apr-16
524661	WELCURE	25-Apr-16	532498	SHRIRAMCIT	27-Apr-16
514162	WELSPUNIND	25-Apr-16	530017	SIL	27-Apr-16
506235	ALEMBICLTD	26-Apr-16	506105	STANROS	27-Apr-16
500215	ATFL	26-Apr-16	501370	WALCHPF	27-Apr-16
532215	AXISBANK	26-Apr-16	532648	YESBANK	27-Apr-16
531340	BERVINL	26-Apr-16	500410	ACC	28-Apr-16
532523	BIOCON	26-Apr-16	500425	AMBUJACEM	28-Apr-16
511505	CAPITALT	26-Apr-16	507525	AMRITCORP	28-Apr-16
532365	DSSL	26-Apr-16	520119	ASAL	28-Apr-16
530079	FAZE3Q	26-Apr-16	511196	CANFINHOME	28-Apr-16
500670	GNFC	26-Apr-16	500096	DABUR	28-Apr-16
532775	GTLINFRA	26-Apr-16	500135	ESSELPRO	28-Apr-16
539437	IDFCBANK	26-Apr-16	532482	GRANULES	28-Apr-16
534816	INFRATEL	26-Apr-16	500160	GTL	28-Apr-16
533402	INNOIND	26-Apr-16	531410	GUJFOIL	28-Apr-16
500249	KSBPUMPS	26-Apr-16	500185	HCC	28-Apr-16
532313	MAHLIFE	26-Apr-16	532281	HCLTECH	28-Apr-16
514418	MANORG	26-Apr-16	504731	IBRIGST	28-Apr-16
532500	MARUTI	26-Apr-16	532822	IDEA	28-Apr-16
532200	MYSOREBANK	26-Apr-16	500233	KAJARIACER	28-Apr-16
500355	RALLIS	26-Apr-16	539276	KAYA	28-Apr-16
500330	RAYMOND	26-Apr-16	532889	KPRMILL	28-Apr-16
538635	SNOWMAN	26-Apr-16	500307	NIRLON	28-Apr-16
500407	SWARAJENG	26-Apr-16	538771	PINCON	28-Apr-16
539268	SYNGENE	26-Apr-16	507300	RAVALSUGAR	28-Apr-16
532831	ABHISHEK	27-Apr-16	531169	SKPSEC	28-Apr-16
533573	APLLTD	27-Apr-16	590046	SMRUTHI	28-Apr-16
532454	BHARTIARTL	27-Apr-16	533121	SQSBFSI	28-Apr-16
500878	CEATLTD	27-Apr-16	531359	SRAMSET	28-Apr-16
506395	COROMANDEL	27-Apr-16	513262	SSWL	28-Apr-16
507886	DHRUVES	27-Apr-16	500408	TATAELXSI	28-Apr-16
523708	EIMCOELECO	27-Apr-16	501242	TCIFINANCE	28-Apr-16
505700	ELECON	27-Apr-16	500295	VEDL	28-Apr-16
523754	EPCIN	27-Apr-16	505412	WENDT	28-Apr-16
500086	EXIDEIND	27-Apr-16	530117	ADIFINCHM	29-Apr-16
505790	FAGBEARING	27-Apr-16	532331	AJANTPHARM	29-Apr-16

532493	ASTRAMICRO	29-Apr-16	524204	TEEAI	30-Apr-16
500027	ATUL	29-Apr-16	523868	UBEINDL	30-Apr-16
511243	CHOLAFIN	29-Apr-16	534741	VIRTUALG	30-Apr-16
508906	EVERESTIND	29-Apr-16	531147	ALICON	02-May-16
500033	FORCEMOT	29-Apr-16	533029	ALKALI	02-May-16
511676	GICHSGFIN	29-Apr-16	519600	CCL	02-May-16
502856	GNDHISP	29-Apr-16	533896	FERVENTSYN	02-May-16
519126	HNDFDS	29-Apr-16	500010	HDFC	02-May-16
532174	ICICIBANK	29-Apr-16	533519	L&TFH	02-May-16
532659	IDFC	29-Apr-16	507912	LKPFIN	02-May-16
539448	INDIGO	29-Apr-16	500264	MAFATIND	02-May-16
500245	KIRLFER	29-Apr-16	500162	PARRYSUGAR	02-May-16
523457	LINDEINDIA	29-Apr-16	534369	TBZ	02-May-16
500329	PENTAGRAPH	29-Apr-16	532921	ADANIPTS	03-May-16
524632	RELISH	29-Apr-16	533096	ADANIPOWER	03-May-16
532983	RPGLIFE	29-Apr-16	522275	ALSTOMT&D	03-May-16
500674	SANOFI	29-Apr-16	509438	BENARAS	03-May-16
501061	SBBJ	29-Apr-16	500040	CENTURYTEX	03-May-16
505827	SNL	29-Apr-16	532443	CERA	03-May-16
511218	SRTRANSFIN	29-Apr-16	531199	GLANCE	03-May-16
531003	SWRNASE	29-Apr-16	532424	GODREJCP	03-May-16
513434	TATAMETALI	29-Apr-16	538835	INTELLECT	03-May-16
504966	TINPLATE	29-Apr-16	511208	IVC	03-May-16
500429	UNIPHOS	29-Apr-16	500290	MRF	03-May-16
512070	UPL	29-Apr-16	532698	NITINSPIN	03-May-16
534392	VSSL	29-Apr-16	532481	NOIDATOLL	03-May-16
526125	ARHNTTO	30-Apr-16	532690	RAMSARUP	03-May-16
513729	AROGRANITE	30-Apr-16	534618	SAL	03-May-16
531155	EPSOMPRO	30-Apr-16	539252	SCFL	03-May-16
500469	FEDERALBNK	30-Apr-16	536666	SFCL	03-May-16
524226	GAEL	30-Apr-16	532638	SHOPERSTOP	03-May-16
590025	GINNIFILA	30-Apr-16	520086	SICAL	03-May-16
500250	LGBBROSLTD	30-Apr-16	504973	TUBEINVEST	03-May-16
533007	LGBFORGE	30-Apr-16	532343	TVSMOTOR	03-May-16
530243	MANGASOF	30-Apr-16	500254	UTTAMVALUE	03-May-16
532892	MOTILALOFS	30-Apr-16	512599	ADANIENT	04-May-16
516062	NATPLY	30-Apr-16	513375	CARBORUNIV	04-May-16
531494	NAVBLDR	30-Apr-16	500280	CENTENKA	04-May-16
532504	NAVINFLUOR	30-Apr-16	532129	HEXAWARE	04-May-16
500452	NEPCAGRO	30-Apr-16	524648	INDOAMIN	04-May-16
500301	NEPCMICON	30-Apr-16	504112	NELCO	04-May-16
531077	NEPCPAPER	30-Apr-16	535754	ORIENTCEM	04-May-16
521192	NEPCTEX	30-Apr-16	533228	SKSMICRO	04-May-16
539015	ORTEL	30-Apr-16	532513	TVSELECT	04-May-16
526349	PARTIND	30-Apr-16	520113	VESUVIUS	04-May-16
532735	RSYSTEMINT	30-Apr-16	532953	VGUARD	04-May-16
513709	SHILGRAVQ	30-Apr-16	534612	AMTL	05-May-16
514454	SOUTLAT	30-Apr-16	500870	CASTROLIND	05-May-16
530565	SSLFINANCE	30-Apr-16	531162	EMAMILTD	05-May-16

500620	GESHIP	05-May-16	524378	JMDEPACKR	13-May-16
507815	GILLETTE	05-May-16	523405	JMFINANCIL	13-May-16
533150	GODREJPROP	05-May-16	526947	LAOPALA	13-May-16
509675	HIL	05-May-16	506590	PHILIPCARB	13-May-16
500211	INSILCO	05-May-16	532410	TRANSCOR	13-May-16
532529	NDTV	05-May-16	534742	ZUARI	13-May-16
500730	NOCIL	05-May-16	500780	ZUARIGLOB	13-May-16
500459	PGHH	05-May-16	532166	ALKASEC	14-May-16
532419	SMARTLINK	05-May-16	530829	CILSEC	14-May-16
504959	STOVACQ	05-May-16	532133	IFGLREFRAC	14-May-16
504961	TATAYODOGA	05-May-16	590130	KANCOTEA	14-May-16
512297	WHELTEX	05-May-16	530443	KIRANSY-B	14-May-16
590013	XPROINDIA	05-May-16	523628	PODDAR	16-May-16
522004	BATLIBOI	06-May-16	517334	MOTHERSUMI	17-May-16
532974	BIRLAMONEY	06-May-16	517562	TRIGYN	17-May-16
517477	ELNET	06-May-16	500228	JSWSTEEL	18-May-16
501455	GREAVESCOT	06-May-16	524212	WANBURY	18-May-16
532642	JSWHL	06-May-16	532173	CYBERTECH	19-May-16
505890	KENNAMET	06-May-16	532526	DISHMAN	19-May-16
502420	ORIENTPPR	06-May-16	500133	ESABINDIA	19-May-16
500339	RAIN	06-May-16	532988	RANEENGINE	19-May-16
500550	SIEMENS	06-May-16	533023	WABCOINDIA	19-May-16
500114	TITAN	06-May-16	513117	AMFORG	20-May-16
532300	WOCKPHARMA	06-May-16	500038	BALRAMCHIN	20-May-16
500300	GRASIM	07-May-16	590043	HARITASEAT	20-May-16
524330	JAYAGROGN	07-May-16	505737	INTLCOMBQ	20-May-16
511632	OLYMTFI	07-May-16	506943	JBCHEPHARM	20-May-16
519091	TASTYBIT	07-May-16	517344	MINDTECK	20-May-16
512161	8KMILES	09-May-16	524558	NEULANDLAB	20-May-16
522241	MMFL	09-May-16	532661	RML	20-May-16
513605	SRIPIPES	09-May-16	522113	TIMKEN	20-May-16
505665	ABCBEARS	10-May-16	506690	UNICHEMLAB	20-May-16
532548	CENTURYPLY	10-May-16	526775	VALIANT	20-May-16
511728	KZLFIN	10-May-16	533470	RUSHIL	21-May-16
539353	SWARAJAUTO	10-May-16	521240	SAMBANDAM	21-May-16
532812	TFL	10-May-16	500266	MAHSCOOTER	23-May-16
500877	APOLLOTYRE	11-May-16	532987	RBL	23-May-16
500085	CHAMBLFERT	11-May-16	532978	BAJAFINSV	24-May-16
500247	KOTAKBANK	11-May-16	500034	BAJFINANCE	24-May-16
509220	PTL	11-May-16	523736	DPL	24-May-16
500350	RSWM	11-May-16	523642	PIIND	24-May-16
533553	TDPOWERSYS	11-May-16	590072	SUNDRMBRAK	24-May-16
500124	DRREDDY*	12-May-16	519174	ASHAI	25-May-16
509488	GRAPHITE	12-May-16	532977	BAJAJ-AUTO	25-May-16
523207	KOKUYOCLN	12-May-16	500490	BAJAJHLDNG	25-May-16
531213	MANAPPURAM	12-May-16	500660	GLAXO	25-May-16
500790	NESTLEIND	12-May-16	500164	GODREJIND	25-May-16
520056	SUNCLAYLTD	12-May-16	533217	HMVL	25-May-16
521064	TRIDENT	12-May-16	532777	NAUKRI	25-May-16

530073	SANGHVIMOV	25-May-16	507833	COMPUPN	30-May-16
519234	SIEL	25-May-16	531270	DAZZEL	30-May-16
533158	THANGAMAYL	25-May-16	535917	GCMCOMM	30-May-16
523319	BALMLAWRIE	26-May-16	535431	GCMSECU	30-May-16
500144	FINCABLES	26-May-16	530263	GLOBALCA	30-May-16
517300	GIPCL	26-May-16	531608	GORANIN	30-May-16
532662	HTMEDIA	26-May-16	531737	GREENCREST	30-May-16
500387	SHREECEM	26-May-16	511543	GSBFIN	30-May-16
531652	THIRDFIN	26-May-16	524754	GUJMEDI	30-May-16
500414	TIMEX	26-May-16	532851	INSECTICID	30-May-16
509910	ZSOUTGAS	26-May-16	538422	JACKSON	30-May-16
522261	DOLPHINOFF	27-May-16	526558	JAMEHOT	30-May-16
531049	NEELKAN	27-May-16	530405	JINDCAP	30-May-16
505800	RANEHOLDIN	27-May-16	535730	KHOBSURAT	30-May-16
506655	SUDARSCHEM	27-May-16	539446	KRISHFAB	30-May-16
508939	BLCISER	28-May-16	531164	LADIAMO	30-May-16
530859	COSBOARD	28-May-16	506113	LIFELINE	30-May-16
538319	GCMCAPI	28-May-16	531319	MARUTISE	30-May-16
500202	INDLEASE	28-May-16	514332	NEOINFRA	30-May-16
511092	JMDTELEFILM	28-May-16	535514	PRIMECAPM	30-May-16
506079	LAKPRE	28-May-16	530125	SAMRATPH	30-May-16
501343	MOTOGENFIN	28-May-16	526532	SFPIL	30-May-16
530557	NCLRESE	28-May-16	531411	TUNITEX	30-May-16
533202	NITESHEST	28-May-16	521226	UNIROYAL	30-May-16
524038	VENLONENT	28-May-16	531831	UNISH	30-May-16
509038	VOLLF	28-May-16	531762	UNJHAFOR	30-May-16
531175	BLSINFOTE	30-May-16	539123	VBIND	30-May-16
500067	BLUESTARCO	30-May-16	530401	VINYOFL	30-May-16
531458	BOSTONBIO	30-May-16	511690	WARNER	30-May-16
539131	CLLIMITED	30-May-16			

EARNING ESTIMATE Q4FY16

BSE Code	Company Name	SALES (Cr.)	SALES Growth	PAT (Cr.)	PAT Growth
500086	EXIDEIND	1546.1	(6.00)	129.5	(5.90)
532500	MARUTI	14529.7	6.60	1207.4	(6.00)
500002	ABB	1880	3.60	76	40.00
500410	ACC	2985	3.50	213.9	(14.30)
500425	AMBUJACEM	2485.3	2.50	303.5	(4.50)
532538	ULTRACEMCO	6398.8	4.20	572	(7.00)
500096	DABUR	2103.6	8.20	305	7.10
533573	APLLTD	806.2	60.70	178.7	154.00
532523	BIOCON	870.8	4.90	105.5	(47.60)
500674	SANOFI	550	12.50	63.2	30.60
500295	VEDL	15679.9	(11.90)	422.3	(42.20)
532832	IBREALEST	640	7.70	61.4	(34.10)
532313	MAHLIFE	230.1	(11.20)	28.2	(8.00)
532281	HCLTECH	10854.4	17.10	1872.8	11.20
532400	KPIT	842.4	10.40	81.1	61.20

500408	TATAELXI	289.1	25.00	39.3	31.80
532454	BHARTIARTL	24795.8	7.70	985.6	(21.50)
534816	INFRATEL	3120.3	5.90	619.9	11.20
532822	IDEA	9469.8	12.40	507.1	(46.20)
506395	COROMANDEL	2862.7	(4.50)	90.1	31.30
532622	GDL	265.6	0.20	30.8	(36.80)
532706	INOXLEISUR	243.9	12.00	-6.9	Loss
539448	INDIGO	4131.5	8.10	513.7	0.20
512070	UPL	3962.4	9.30	510.5	13.00
532215	AXISBANK	4212.2	10.90	2376.7	9.00
500469	FEDERALBNK	596.4	(4.30)	193.4	(31.10)
532174	ICICIBANK	5503.7	8.40	2926.5	0.20
532648	YESBANK	1218.8	24.70	698.2	26.70
535789	IBULHSGFIN	879.3	9.00	657.7	19.40
511218	SRTRANSFIN	1364.5	25.70	279.6	(11.70)
532215	AXISBANK	163.8	79.40	91.8	126.50

RESULT Q4FY16

BSE Code	Company Name	SALES (Cr.)	SALES Growth	PAT (Cr.)	PAT Growth
502330	IPAPPM	295.33	(0.30)	20.38	199.71
532756	MAHINDCIE	404.19	6.58	15.27	(52.34)
500325	RELIANCE	60252.00	(10.70)	7398.00	15.94
504067	ZENSARTECH	751.39	14.27	70.19	(2.24)
532187	INDUSINDBK	1268.21	37.81	620.00	25.25
500180	HDFCBANK	7453.35	23.35	3374.00	20.20

Economic Calendar

Country	Monday 25th April 16	Tuesday 26th April 16	Wednesday 27th April 16	Thursday 28th April 16	Friday 29th April 16
US	Core Durable Goods Orders m/m , Durable Goods Orders m/m , New Home Sales .	S&P/CS Composite-20 HPI y/y , CB Consumer Confidence , Richmond Manufacturing Index .	Goods Trade Balance , Pending Home Sales m/m , Crude Oil Inventories , FOMC Statement, Federal Funds Rate .	Advance GDP q/q , Unemployment Claims , Advance GDP Price Index q/q , Natural Gas Storage .	Core PCE Price Index m/m , Employment Cost Index q/q , Personal Spending m/m , Personal Income m/m , Chicago PMI , Revised UoM Consumer Sentiment , Revised UoM Inflation Expectations
UK/EURO ZONE	Nationwide HPI m/m , BBA Mortgage Approvals.	German Import Prices m/m ,	French Consumer Spending m/m , M3 Money Supply y/y , Private Loans y/y , Prelim GDP q/q , Index of Services 3m/3m .	German Prelim CPI m/m , German Unemployment Change, Italian Monthly Unemployment Rate , Italian Prelim CPI m/m .	German Prelim CPI m/m , German Unemployment Change, Italian Monthly Unemployment Rate , Italian Prelim CPI m/m .
INDIA					



(Regn. No. : INP 000004011)

Narnolia Securities Ltd.

Narnolia Research Lab

Stellar IT Park | 5th Floor | Office Space No. 6 | Tower-II Ind Plot
No. C-25 | Sector-62 | Noida | Ph : 0120-4215110

Narnolia Securities Ltd.

201 | 2nd Floor | Marble Arch Building | 236B-AJC Bose Road Kolkata-
700 020 Ph : 033-40501500
Email : narnolia@narnolia.com website : www.narnolia.com