

SGX NIFTY : 8678 ( 23 Pt Up)

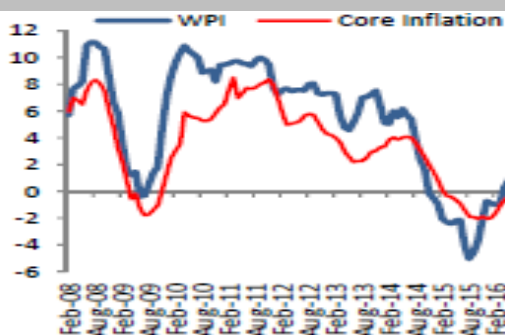
### Quote of the Day

"Bargains are the holy grail of the true stockpicker. The fact that 10 to 30 percent of our net worth is lost in a market sell-off is of little consequence. We see the latest correction not as a disaster but as an opportunity to acquire more shares at low prices. This is how great fortunes are made over time."

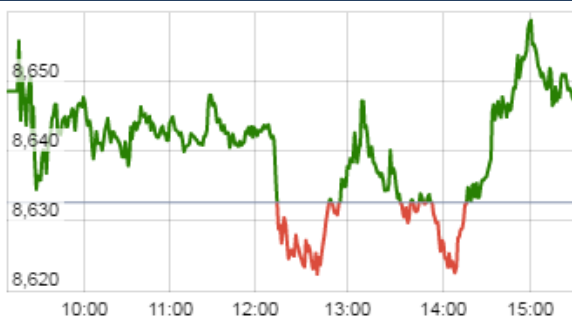
Peter Lynch

### Chart of the Day

#### WPI Trend



### Index Action Nifty ( 24th Aug 16 )



### Index

Contents	Page	Coverage
News	2	Update
Economic Calendar	3	Update

### Market

Name	Value	Change
Sensex	28,059.94	69.73
Nifty	8650.30	17.70
DOW	18,481.48	(65.82)
NASDAQ	5,217.70	(42.30)
CAC	4,435.47	14.02
DAX	10,622.97	30.09
FTSE	6,835.78	(32.73)
NIKKIE	16,609.93	12.63
HANG SENG	22,834.49	13.71
EW ALL SHARE	15344.08	62.91

### Instituional Turnover

#### FII

Investor	Buy(Cr.)	Sale(Cr.)	Net(Cr.)
24-Aug-16	3092.45	3131.73	(39.28)
Aug,16	74459.35	67343.86	7115.49
2016	671740.96	649333.24	22407.72

#### DII

Investor	Buy(Cr.)	Sale(Cr.)	Net(Cr.)
24-Aug-16	2186.71	2057.53	129.18
Aug,16	30442.73	35561.50	(5118.77)
2016	279774.06	280168.83	(394.77)

### Commodity Price

Commodity/Currencies	Value	
GOLD	31046.00	↓
SILVER	43766.00	↓
CRUDEOIL	49.05	↑
COPPER	319.00	↑
NATURALGAS	188.20	↑
DOLLAR/RS.	67.07	↓
EURO/RS.	75.59	↑
POUND/RS.	88.67	↓

## Top Price Performers

Top Performers 1D	% Change	Top Performers 1W	% Change	Top Performers 1M	% Change
PIRLIFE	33.68	PIRLIFE	38.09	APTECHT	81.66
USHERAGRO	20.63	SHALPAINTS	37.06	PRIMEPRO	60.00
AGARIND	20.00	BFLYGANDHI	36.09	DELTACORP	58.50
PANYAMCEM	19.18	DEEPAKFERT	35.90	MANDHANA	53.37
RAMCOIND	19.07	JBMA	35.19	SHALPAINTS	52.82

Worst Performers 1D	% Change	Worst Performers 1W	% Change	Worst Performers 1M	% Change
WELSPUNIND	(27.95)	WELSPUNIND	(42.68)	USHERAGRO	(40.17)
BIRLACOT	(22.22)	SAHARAHOUS	(22.54)	RAMSARUP	(39.50)
VIVIDHA	(16.48)	BIRLACOT	(22.22)	DHARSUGAR	(38.31)
BILENERGY	(11.93)	KEMROCK	(16.50)	KEMROCK	(38.15)
WSI	(9.76)	ISIBARS	(14.37)	UGARSUGAR	(36.79)

## Top News

- **Auro pharma concall update:**
- Four peptide-based microsphere products are in the pipeline and they have a revenue potential of \$3 billion. Management do not see more than three-four players getting into that. So that is a level of opportunity which exists right now
- company was expecting revenues to trickle in the next two to two-and-a-half years. Vaccine is one area, microsphere is another and oncology
- US sales registered the highest growth of 20.5 per cent at Rs 1,703.9 crore in June quarter, contributing 45 per cent to the gross sales, on the back of new launches in oral and injectibles segments
- Capex plans to deploy close to Rs 1,200 crore this year
- 43 products have received approval which includes 2 tentative approvals
- 19 products will be launched in next 3 quarters .The company has already obtained approval for these products
- **KRBL** , which saw a de-growth in the first quarter of FY17, is expecting to end the year by 8-10 percent growth in volumes and topline. Some price hike is expected in coming quarters . 14-15 percent rise to Rs 22,000-23,000 is possible this year. Swing of Basmati rice has been lower despite bumper Kharif crop this season. This will lead to shortage of rice by around 20 percent, Mittal says. However, Iraq and other countries are expected to buy rice post October-November, which will boost volumes.
- **Engineers India** 's bet on the international sector is paying off, with about Rs 100 crore revenue accruing from there and margins coming back up to 20 percent. The company has a strong order book and he is also seeing a lot of demand from hydrocarbon sector and projects like 'Namami Gange'. International order pipeline is very strong and EIL has seen a major breakthrough in orders from Bangladesh territory
- **Tata Power** generation capacity up 9% in June quarter . The rise in overall generation capacity was "mainly due to commissioning of 44 MW Lahori wind farm project in Madhya Pradesh and Cennergi (Pty) achieving commercial operations of both its 134 MW Amakhala Emoyeni and 95 MW Tsitsikamma Wind Farms
- **Lupin** said its subsidiary Gavis Pharmaceuticals has received approval from the US health regulator to market generic linezolid tablets used for treating bacterial infection in the American market. The company's US-based subsidiary Gavis Pharmaceuticals has received final approval for its linezolid tablets in 600 mg strength from the US Food and Drug Administration (USFDA)
- **Inox Leisure** plans to invest Rs 200 crore to add up to 60 cinema screens across the country this fiscal. In addition to 1 property, 5 screens and 617 seats (already opened), we expect to open another 12 properties, 54 screens and 10,786 seats this financial year
- **Strides Shasun** received approval from USFDA for Ranitidine tablets USP 150 mg and 300 mg. Ranitidine tablets is the first integrated product approval where the API and formulations will be manufactured at erstwhile Shasun Pharmaceutical's Cuddalore and Pondicherry facilities respectively
- **Japan's CSPI** rose to a seasonally adjusted annual rate of 0.4%, from 0.2% in the preceding month. Analysts had expected Japan's CSPI to fall to 0.1% last month.
- **U.S. Crude Oil Inventories** rose to a seasonally adjusted annual rate of 2.501M, from -2.508M in the preceding month. Analysts had expected U.S. Crude Oil Inventories to fall - 0.455M last month.
- **Federal Housing Enterprise Oversight (OFHEO)** said that U.S. HPI rose to a seasonally adjusted 0.2%, from 0.2% in the preceding month. Analysts had expected U.S. HPI to rise 0.3% last month.
- **National Bank of Belgium** said that Belgium NBB Business Climate fell to -3.1, from 1.0 in the preceding quarter. Analysts had expected Belgium NBB Business Climate to remain unchanged at 1.0 in the last quarter.

**Result Calendar Q1FY17**

BSE Code	Company Name	Result Date	BSE Code	Company Name	Result Date
532749	ALLCARGO	22-Aug-16	532356	TRIVENI	26-Aug-16
500183	HFCL	22-Aug-16	532240	INDNIPPON	27-Aug-16
513599	HINDCOPPER	22-Aug-16	500207	INDORAMA	27-Aug-16
500104	HINDPETRO	22-Aug-16	520111	RATNAMANI	27-Aug-16
532624	JINDALPHOT	22-Aug-16	521206	SAMTEX	27-Aug-16
536773	JPOLYINVST	22-Aug-16	526961	TRANSFIN	27-Aug-16
532555	NTPC	22-Aug-16	500041	BANARISUG	29-Aug-16
532670	RENUKA	22-Aug-16	532927	ECLERX	29-Aug-16
500402	SPMLINFRA	22-Aug-16	532181	GMDCLTD	29-Aug-16
507815	GILLETTE	23-Aug-16	533286	MOIL	29-Aug-16
509073	HATHWAYB	23-Aug-16	506022	PRAKASH	29-Aug-16
521016	ICIL	23-Aug-16	531088	TULIPSTA	29-Aug-16
512237	JAICORPLTD	23-Aug-16	533144	COX&KINGS	30-Aug-16
532649	NECLIFE	23-Aug-16	532150	INDRAMEDCO	30-Aug-16
500400	TATAPOWER	23-Aug-16	535755	ABFRL	31-Aug-16
533154	INFINITE	24-Aug-16	532708	GVKPIL	31-Aug-16
533169	MANINFRA	24-Aug-16	506525	KANORICHEM	31-Aug-16
513023	NBVENTURES	24-Aug-16	539302	POWERMECH	31-Aug-16
540048	SPAL	24-Aug-16	508869	APOLLOHOSP	1-Sep-16
532959	GAMMNINFRA	25-Aug-16	502995	MALWACOTT	5-Sep-16
519191	JOLYMER	25-Aug-16	500110	CHENNPETRO	7-Sep-16
513250	JYOTISTRUC	25-Aug-16	506166	APIS	8-Sep-16
537573	POLYMAC	25-Aug-16	534742	ZUARI	8-Sep-16
539392	SANGFROID	25-Aug-16	500780	ZUARIGLOB	8-Sep-16
500488	ABBOTINDIA	26-Aug-16	522113	TIMKEN	9-Sep-16
500940	FINOLEXIND	26-Aug-16	534742	ZUARI	9-Sep-16
506943	JBCHEPHARM	26-Aug-16	500780	ZUARIGLOB	9-Sep-16
514034	JBFIND	26-Aug-16	531882	KWALITY	14-Sep-16
500459	PGHH	26-Aug-16	520155	STARLOG	14-Sep-16
530549	SHILPAMED	26-Aug-16	524038	VENLONENT	28-Oct-16

Economic Calendar					
Country	Monday 22th Aug 16	Tuesday 23th Aug 16	Wednesday 24th Aug 16	Thursday 25th Aug 16	Friday 26th Aug 16
US	Flash Manufacturing PMI , Flash Services PMI.	Core Durable Goods Orders m/m , Durable Goods Orders m/m , New Home Sales , S&P/CS Composite- 20 HPI y/y , CB Consumer Confidence , New Home Sales .	HPI m/m , Existing Home Sales , Crude Oil Inventories .	Unemployment Claims , Natural Gas Storage .	Prelim GDP q/q , Goods Trade Balance , Prelim GDP Price Index q/q , Revised UoM Consumer Sentiment , Revised UoM Inflation Expectations .
UK/EURO ZONE	French Flash Manufacturing PMI , French Flash Services PMI , Spanish Unemployment Rate , German Constitutional Court Ruling , German Flash Manufacturing PMI , German Flash Services PMI , Flash Manufacturing PMI, Flash Services PMI , Minimum Bid Rate , ECB	GfK Consumer Confidence .	German Final GDP q/q , CBI Realized Sales , Belgian NBB Business Climate .	German Final GDP q/q , CBI Realized Sales , Belgian NBB Business Climate .	M3 Money Supply y/y , Private Loans y/y , Second Estimate GDP q/q , Prelim Business Investment q/q , Index of Services 3m/3m , Italian Prelim CPI m/m .
INDIA					



(Regn. No. : INP 000004011)

### Narnolia Securities Ltd.

#### Narnolia Research Lab

Stellar IT Park | 5th Floor | Office Space No. 6 | Tower-IIInd Plot  
No. C-25 | Sector-62 | Noida | Ph : 0120-4215110

#### Narnolia Securities Ltd.

201 | 2nd Floor | Marble Arch Building | 236B-AJC Bose Road Kolkata-  
700 020 Ph : 033-40501500  
Email : narnolia@narnolia.com website : www.narnolia.com