

SGX NIFTY : 7069 (57 Pt Up)

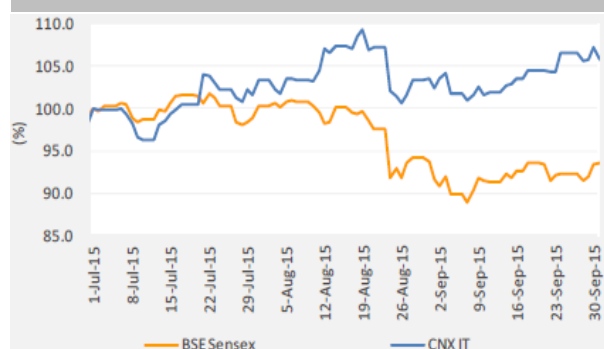
Quote of the Day

"Bargains are the holy grail of the true stockpicker. The fact that 10 to 30 percent of our net worth is lost in a market sell-off is of little consequence. We see the latest correction not as a disaster but as an opportunity to acquire more shares at low prices. This is how great fortunes are made over time."

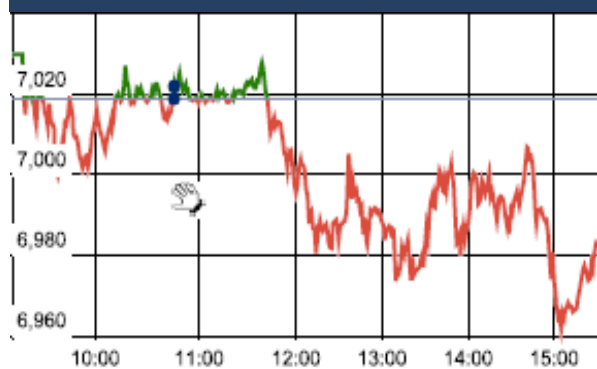
Peter Lynch

Chart of the Day

BSE IT Sector Trend



Index Action Nifty (25th Feb 16)



Index

Contents	Page	Coverage
News	2	Update
Economic Calendar	3	Update

Market

Name	Value	Change
Sensex	22,976.00	(112.30)
Nifty	6970.60	(48.10)
DOW	16,391.00	-21.44
NASDAQ	4,582.20	39.59
CAC	4,248.45	93.11
DAX	9,331.48	163.68
FTSE	6,012.81	145.63
NIKKIE	16,241.89	101.55
HANG SENG	19,190.79	302.04
EW ALL SHARE	12110.29	(77.50)

Instituional Turnover

FII

Investor	Buy(Cr.)	Sale(Cr.)	Net(Cr.)
25-Feb-16	4959.80	6425.48	(1465.68)
Feb,16	60516.75	69659.55	(9142.80)
2016	910843.24	155507.48	755335.76

DII

Investor	Buy(Cr.)	Sale(Cr.)	Net(Cr.)
25-Feb-16	2569.20	1762.23	806.97
Feb,16	33851.32	26186.97	7664.35
2016	75555.79	54793.75	20762.04

Commodity Price

Commodity/Currencies	Value	
GOLD	29760.00	↑
SILVER	37155.00	↓
CRUDEOIL	32.16	↑
COPPER	315.50	↓
NATURALGAS	124.80	↓
DOLLAR/RS.	68.71	↑
EURO/RS.	75.95	↑
POUND/RS.	96.12	↑

Market Snapshot

Top Price Performers

Top Performers 1D	% Change	Top Performers 1W	% Change	Top Performers 1M	% Change
SMARTLINK	19.99	SHREYAS	33.35	NDTV	59.81
LAKSHMIEFL	16.86	RAMKY	33.24	LLOYDMETAL	58.74
PRIMEPRO	16.67	BFINVEST	31.73	RAMKY	47.38
SAHARAHOUS	13.51	RUSHIL	29.16	INFODRIVE	39.02
KAVVERITEL	12.35	TRICOM	23.87	RUSHIL	34.93

Worst Performers 1D	% Change	Worst Performers 1W	% Change	Worst Performers 1M	% Change
BIRLACOT	(20.00)	RAMSARUP	(22.06)	PDUMJEPULP	(62.24)
SHREERAM	(12.08)	STCINDIA	(21.14)	AMTEKINDIA	(46.46)
ESTER	(11.07)	VIKASGLOB	(21.02)	AFL	(42.98)
CENTRUM	(10.00)	MMTC	(17.88)	PARLESOFT	(40.02)
RESTILE	(9.89)	FINANTECH	(17.82)	TREEHOUSE	(38.80)

Top News

• Railway Budget Updation :

- > FY16 loss from subsidising passenger fares seen Rs 30000 crore
- > To up FY17 allocation for electrification by 50 percent
- > FY17 gross budgetary support seen Rs 40000 crore
- > FY17 goods earnings target at Rs 1.18 lakh cr
- > LIC has agreed to fund Rs 1.5 lakh cr over next 5 years.
- > FY17 passenger revenue target at Rs 51012 crore up 12.4% YoY

• **Fitch Ratings** has assigned state-owned NTPC 's USD 500 million senior unsecured notes due 2026, which were issued out of its USD 4 billion medium-term note programme, a final rating of 'BBB-'. The notes constitute direct, unconditional, unsubordinated and unsecured obligations of NTPC. The assignment of the final rating follows a review of the final documentation materially conforming to the draft paper previously received. The final rating is the same as expected one assigned on February 21.

• **L&T** has signed a long-term agreement with McDermott International for subsea projects in deepwater segment in the east coast of India. L&T Hydrocarbon Engineering Ltd (LTHE) has inked the agreement with McDermott to develop a cost-effective approach at the L&T subsidiary's Kattupalli facility near Chennai

• **Central Bank of India** is going to consider fund raising via preferential allotment of shares. The issue price per equity share may be determined as per SEBI (ICDR) regulations subject to approval of Government of India, Reserve Bank of India, shareholders and other statutory authorities.

• **IRVCL** said that JLF, have approved the SDR conversion package and that the lenders will convert part of the debt of the company into equity, in one or more tranches . JLF, on February 23, have approved the SDR conversion package and that the lenders will convert part of the debt of the company into equity, in one or more tranches

• **IDBI Bank** said it proposes to offer about 28 crore shares at Rs 53.44 apiece to LIC on preferential basis to raise Rs 1,500 crore. LIC and various other schemes currently hold 7.25 per cent stake in IDBI Bank.

• **IOC Mgt Guideline** : Hike in customs duty will have to be borne by the oil marketing companies (OMCs). Crude cost will increase by USD 1.50 per barrel (bbl) if the duty is increased by 5 percent, which will further hit the company's EBITDA by Rs 2,000-3,000 crore . Company said that low crude price cannot be passed on to the customers as finished products are only linked with product prices internationally.

• **Wipro** collaborates with Wind River to showcase carrier grade cloud technologies

• **Eurostat said consumer price inflation** rose by a seasonally adjusted 0.3% last month, down from a preliminary estimate of 0.4%. Euro zone inflation rose by 0.2% in December.

• **Italian Retail Sales** fell to -0.1%, from 0.2% in the preceding month whose figure was revised down from 0.3%. Analysts had expected Italian Retail Sales to rise 0.5% last month.

• **U.K. business investment** fell to a seasonally adjusted -2.1%, from 1.2% in the preceding quarter whose figure was revised down from 2.2%. Analysts had expected U.K. business investment to fall to 0.9% in the last quarter.

• **Instituto Nacional de Estadistica said that Spanish GDP** rose to 0.8%, from 0.8% in the preceding month. Analysts had expected Spanish GDP to rise 0.8% last month.

• **Energy Information Administration said that U.S. Crude Oil Inventories** rose to a seasonally adjusted annual rate of 3.502M, from 2.147M in the preceding month. Analysts had expected U.S. Crude Oil Inventories to rise 3.427M last month.

• **Federal Statistical Office said that Swiss PPI** fell to a seasonally adjusted -0.4%, from -0.4% in the preceding month. Analysts had expected Swiss PPI to fall -0.2% last month.

Economic Calendar

Country	Monday 22th Feb 16	Tuesday 23th Feb 16	Wednesday 24th Feb 16	Thursday 25th Feb 16	Friday 26th Feb 16
US	Flash Manufacturing PMI.	S&P/CS Composite-20 HPI y/y , CB Consumer Confidence , Existing Home Sales .	New Home Sales , Crude Oil Inventories.	Core Durable Goods Orders m/m , Unemployment Claims , Durable Goods Orders m/m , HPI m/m , Natural Gas Storage.	Prelim GDP q/q , Core PCE Price Index m/m , Goods Trade Balance , Personal Spending m/m .
UK/EURO ZONE	French Flash Manufacturing PMI ,French Flash Services PMI , German Flash Manufacturing PMI , German Flash Services PMI , Flash Manufacturing PMI, Retail Sales m/m, Public Sector Net Borrowing.	German Ifo Business Climate , Inflation Report Hearings , BBA Mortgage Approvals , 10-y Bond Auction.	Belgian NBB Business Climate , CBI Realized Sales.	German Unemployment Change , M3 Money Supply y/y , Private Loans y/y , Second Estimate GDP q/q , Prelim Business Investment q/q , Index of Services 3m/3m , Final CPI y/y.	German Prelim CPI m/m ,French Consumer Spending m/m , French Prelim CPI m/m , Spanish Flash CPI y/y .
INDIA					

Narnolia Research Lab

Stellar IT Park | 5th Floor | Office Space No. 6 | Tower-IIInd Plot No. C-25 | Sector-62 | Noida | Ph : 0120-4215110

Central Strategy Desk - Kolkata

124 | 1st Floor | 7/1 Lords Sinha Road | Kolkata - 71
Ph : 033-22821500 | M : 93347 14418, 98302 69810