

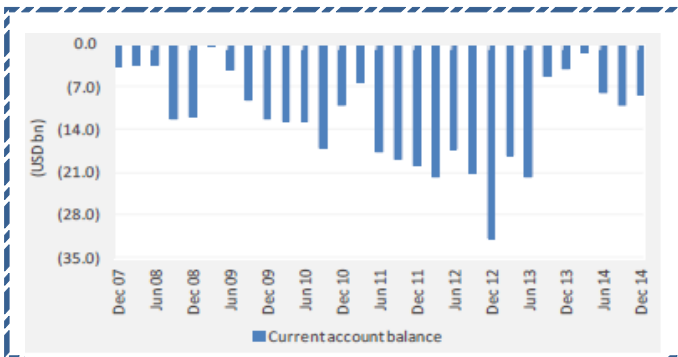
Quote of the Day

"First, many in Wall Street - a community in which quality control is not prized - will sell investors anything they will buy." **Warren Buffett**

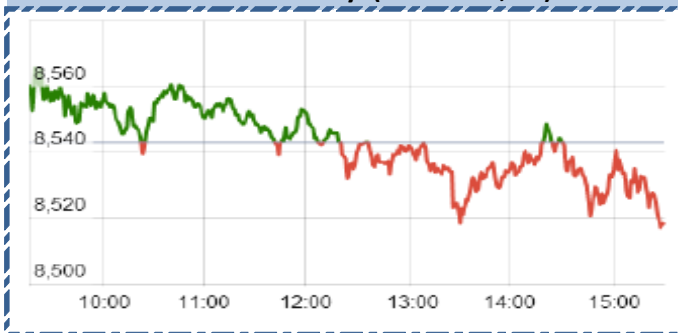
SGX NIFTY : 8475 (51 Pt Down)

Chart of the Day

Current Account Deficit



Index Action-Nifty (25th Mar, 15)



Index

Contents	Page	Coverage
News	2	UPDATE
Economic Calendar	3	UPDATE

MARKET

Name	Value	Change
Sensex	28111.83	(49.89)
Nifty	8530.8	(12.15)
DOW	17718.54	(292.60)
NASDAQ	4876.52	(118.82)
CAC	5020.99	(67.29)
DAX	11862.32	(140.32)
FTSE	6990.97	(28.71)
NIKKIE	19420.22	(325.98)
HANG SENG	24479.29	(48.94)
EW ALL SHARE	14392.46	(37.12)

INSTITUTIONAL TURNOVER

FII			
Investor	Buy(Cr.)	Sale(Cr.)	Net(Cr.)
25th Mar	6910.27	6,097.08	813.19
Mar,15	91461.77	84,155.08	7306.69
2015	295237.50	2,70,578.87	24658.63
DII			
Investor	Buy(Cr.)	Sale(Cr.)	Net(Cr.)
25th Mar	2029.46	1,932.94	96.52
Mar,15	30174.13	32,276.60	(2102.47)
2015	103960.52	1,12,232.44	(8271.92)

COMMODITY PRICE

COMMODITY/CURRENCIES	Value	
GOLD	26477.00	↑
SILVER	38160.00	↑
CRUDEOIL	50.24	↑
COPPER	386.80	↓
NATURALGAS	173.30	↓
DOLLAR/RS.	62.33	↑
EURO/RS.	68.56	↑
POUND/RS.	92.99	↑

Narnolia Securities Ltd.

Markets Snapshot

Top Price Performers

Top Performers 1D	% Change	Top Performers 1W	% Change	Top Performers 1M	% Change
INDOTECH	19.98	KIRIINDUS	38.28	EUROCERA	91.28
DECNGOLD	19.96	EUROCERA	25.18	NATCOPHARM	60.78
KANANIIND	18.92	RPGLIFE	19.47	SHLAKSHMI	60.76
MANJEERA	18.52	KICL	17.24	KIRIINDUS	57.45
RUSHIL	15.05	DYNAMATECH	15.83	SVCRES	51.58

Worst Price Performers

Worst Performers 1D	% Change	Worst Performers 1W	% Change	Worst Performers 1M	% Change
ISIBARS	(18.13)	COUNCLB	(30.76)	EDUCOMP	(46.99)
IITL	(13.01)	DIAPOWER	(28.72)	SUMEETINDS	(43.14)
IPCALAB	(12.55)	BRANDHOUSE	(26.72)	WEBELSOLAR	(42.65)
RADHEDE	(11.73)	KHAITANELE	(24.74)	GSS	(42.62)
CALSREF	(11.11)	SIGRUN	(23.53)	GEMINI	(41.18)

Top News :

- **Bharat Electronics Ltd** has informed that ICRA has reaffirmed the following credit ratings of the Company for Long-term rating of [ICRA]AAA (pronounced ICRA triple A) to Rs. 200cr fund based bank limits. Short-term rating of [ICRA]A1+ (pronounced ICRA A one plus) to Rs. 2700cr non-fund based bank limits. Short-term rating of [ICRA]A1+ (pronounced ICRA A one plus) to Rs. 5cr short-term Debt programme. The outlook on the long-term rating is 'stable'. These ratings indicate the highest credit quality in the long- and short-term. The instruments rated in these categories carry the lowest credit risk in the long- and short-term.

- **PFC Consulting Limited** (a wholly owned subsidiary of Power Finance Corporation Limited) has transferred on March 17, 2015, its wholly owned Subsidiary Company namely "DGEN Transmission Company Limited (Formerly DGEN & Utrakhand Transmission Company Limited)", incorporated for development of Transmission System associated with DGEN TPS (1200 MW) of Torrent Power Limited to "Instalaciones Inabensa, S.A.", successful bidder selected through "Tariff based Competitive Bidding Guidelines for Transmission services" issued by Ministry of Power, Government of India.

- **IL&FS Transportation Networks Ltd** has informed that ITNL Offshore Two Pte. Ltd., a wholly owned subsidiary of the Company in Singapore, has issued RMB 690 million, 7.50% Reg S only Senior Unsecured Notes due 2018. These Notes have been listed on the Singapore Stock Exchange.

- **Repc Home Finance** has issued Commercial Papers to the tune of Rs.60 Crore (1200 Commercial papers of Rs.5,00,000 each) at a discount rate of 9.15% with a maturity date of May 29, 2015 (65 days tenure).

- **Tata Motors** fixed the issue prices of two different types of shares at Rs 450 and Rs 271 per scrip for its proposed Rs 7,500 crore rights issue.

- **The Foreign Investment Promotion Board** has cleared 10 FDI proposals worth Rs 2,858 crore, and referred the Holcim-Ambuja deal to the CCEA. "The Government has approved 10 proposals of Foreign Direct Investment (FDI) amounting to Rs 2857.83 crore

- **Tata Power** will acquire 50 percent stake in Zambia's Itezhi Tezhi Power Corp Ltd (ITPC) from Tata Africa for an undisclosed amount. ITPC, a 50-50 joint venture with the Zambian parastatal utility ZESCO Ltd (ZESCO), is a special purpose vehicle which has been set up to build and operate a 120 MW hydro power plant in Itezhi Tezhi district in Zambia.

- **Supreme Court** stayed till April 28 the order of Delhi High Court barring Indian pharma major Glenmark, marketing or selling its anti-diabetes medicines in which US drug major Merck Sharp and Dohme (MSD) has claimed patent right.

- **National Institute of Statistics and Censuses** said that Argentinian Trade Balance fell to a seasonally adjusted annual rate of 53M, from 73M in the preceding month. Analysts had expected Argentinian Trade Balance to rise to 95M last month.

- **US Energy Information Administration** said that U.S. Gasoline Inventories fell to a seasonally adjusted annual rate of -2.014M, from -4.473M in the preceding quarter. Analysts had expected U.S. Gasoline Inventories to fall -1.633M in the last quarter.

- **U.K. Office for National Statistics** said that PPI input inched up by a seasonally adjusted 0.2% last month, below expectations for a gain of 1.6%.

Economic Calendar

	Monday 23-Mar-15	Tuesday 24-Mar-15	Wednesday 25-Mar-15	Thursday 26-Mar-15	Friday 27-Mar-15
US	Existing Home Sales , Flash Services PMI .	CPI m/m , Core CPI m/m , CB Consumer Confidence , New Home Sales , Richmond Manufacturing Index .	Core Durable Goods Orders m/m , Durable Goods Orders m/m , Crude Oil Inventories .	Unemployment Claims , Natural Gas Storage .	Final GDP q/q , Final GDP Price Index q/q , Revised UoM Consumer Sentiment , Revised UoM Inflation Expectations .
UK/EURO ZONE	Consumer Confidence	German Ifo Business Climate , CPI y/y , PPI Input m/m , RPI y/y , CBI Realized Sales .	GfK German Consumer Climate , BBA Mortgage Approvals , FPC Statement .	M3 Money Supply y/y , Private Loans y/y , Retail Sales m/m .	French Consumer Spending m/m , Spanish Flash CPI y/y , Italian Retail Sales m/m .
INDIA					



Narnolia Securities Ltd

124, 1st floor 7/ 1, Lords Sinha Road Kolkata 700071, Ph 033-22821251 Toll Free no : 1-800-345-4000

email: research@narnolia.com,

website : www.narnolia.com

Risk Disclosure & Disclaimer: This report/message is for the personal information of the authorized recipient and does not construe to be any investment, legal or taxation advice to you. Narnolia Securities Ltd. (Hereinafter referred as NSL) is not soliciting any action based upon it. This report/message is not for public distribution and has been furnished to you solely for your information and should not be reproduced or redistributed to any other person in any form. The report/message is based upon publicly available information, findings of our research wing "East wind" & information that we consider reliable, but we do not represent that it is accurate or complete and we do not provide any express or implied warranty of any kind, and also these are subject to change without notice. The recipients of this report should rely on their own investigations, should use their own judgment for taking any investment decisions keeping in mind that past performance is not necessarily a guide to future performance & that the the value of any investment or income are subject to market and other risks. Further it will be safe to assume that NSL and /or its Group or associate Companies, their Directors, affiliates and/or employees may have interests/ positions, financial or otherwise, individually or otherwise in the recommended/mentioned securities/mutual funds/ model funds and other investment products which may be added or disposed including & other mentioned in this report/message.