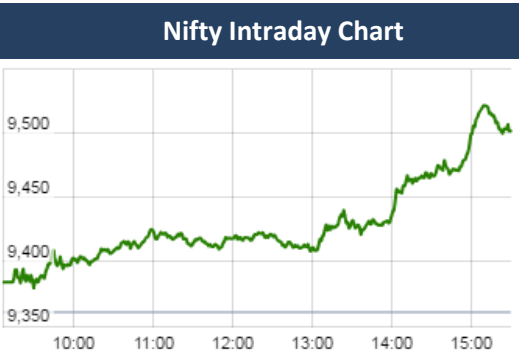


KEY LEVELS

Support 1 : 9421

Resistance 1: 9531



Event Today

Result

BEML , COX&KINGS , CROMPTON, DIVISLAB , DLF, EROSMEDIA EXCELINDUS , FDC , FINOLEXIND HBLPOWER , HINDPETRO, IFBIND, INDHOTEL, INDOCO ITC, JINDRILL , NIPPOBATRY ONGC , PFC , RUPA , SKFINDIA SUNPHARMA , SUNTV , TATACHEM TECHM , TORNTPHARM , TVTODAY

Concall

Ashok Leyland : 9:30 AM Mphasis , Greenlam : 11:00 AM VST , Cont Corp ; 11:00 AM Globus Spirits : 12:00 PM KSCL , SP Apparels : 12:00 PM Oriental Carbon : 12:00 PM LT Foods: 3:00 PM, GE T&D : 4PM Adlabs , Balkrishna, IOC : 4PM Indoco, PTC : 4:00 PM Alkem Lab, Mahanagar : 5:30 PM Crompton Greaves: 6:00 PM Sun Pharma ,TECHM :6:30 PM

Dividend

JKPAPER : Rs. 1.6/- PLASTIBLEN : Rs. 2.6/- SBIN : Rs 2.6/- (Exdate : 26.5.2017)

Market Outlook

Yesterday we have seen a sharp up move of Indian equities and after opening on a subdued note, Nifty continuously rose to make an intraday high of 9522.70. At the end of the day the index closed at 9509.75. It had a net gain of 1.59% over the previous day's close. The broader market was in favor of bulls as the midcap and small cap indices also moved in line with the benchmark index and closed the day after gaining 1.3%-2.9%.

On the sectoral front, Banking, Auto, Realty and Information Technology stocks were on the buyers' radar while some selling pressure was witnessed in Pharmaceuticals stocks. The breadth of the market was positive and about three shares advanced for every share declined at NSE.

Technically the set up was getting built for a pull back over next 3-5 days, but lo and behold it took place just in 3-5 hours. Present days highly synchronous global market at times are showing so much high speed in terms of its reaction that we traders need to adopt a highly agile mindset. S&P 500 (US) have hit a new high and China where debt was downgraded by Moody's just a day before, equities went up sharply. Domestically, derivative structure showed its supremacy once again and while maintaining the range of 9300-9500, closed the May series at the top-end of the range.

For June series looking at the derivative structure post May expiry yesterday is giving Nifty range of 9300-9600 though its too early to have a firm view just yet. for Nifty 9600 call, outstanding open interest is 34.0 lakh contracts whereas for 9300 put, out standing open interest is 38.0 lakh contracts.

Market		
Market	Value	% Change
Morning Traded Market		
SGX NIFTY	9,492.00	-0.04%
NIKKIE	19782.24	-0.16%
HANG SENG	25,696.96	0.26%
Yesterday Closing Market		
Sensex	30,750.03	1.48%
Nifty	9,509.00	1.59%
DOW	21,082.00	0.34%
NASDAQ	6,205.26	0.68%
CAC	5,337.16	-0.08%
DAX	12,621.72	-0.17%
FTSE	7,517.71	0.04%
EW ALL SHARE	16,835.64	0.85%

Commodity Price (Yesterday Closing)		
Commodity/Currencies	Value	% Change
GOLD	28661.00	-0.18%
SILVER	39802.00	-0.08%
CRUDEOIL	5.47	0.41%
NATURALGAS	211.00	-1.91%
DOLLAR/RS.	64.62	-0.17%
EURO/RS.	72.46	0.06%
POUND/RS.	83.73	-0.28%

Institutional Turnover			
FII			
Investor	Buy(Cr.)	Sale(Cr.)	Net(Cr.)
25-May-17	9072	8483	589
May-17	76435	77484	(1049)
2017	76435	77484	(1049)

DII			
Investor	Buy(Cr.)	Sale(Cr.)	Net(Cr.)
25-May-17	4990	5227	(236)
May-17	49775	45264	4511
2017	49775	45264	4511

Quote of the Day : " There is no shame in losing money on a stock. Everybody does it. What is shameful is to hold on to a stock or worse to buy more of it when the fundamentals are deteriorating. " - Peter Lynch

LUPIN **"NEUTRAL"** **25th May 2017**

Lupin is facing headwinds in the US business due to the regulation of drug prices by the US government which has increased competition and deteriorated revenue in the last quarter. We expect that this will continue for next few months which may impact the US sales to the extent of 8-10% going forward. Company's revenue may improve on the back of new launches in FY18. On valuation front, it is attractive for long term investors but due to near term outlook we are Neutral on this stock with the target price of Rs. 1410

HDFCBANK **"BUY"** **24th May 2017**

We continue to like HDFC Bank given its strong fundamentals, steady loan growth, adequate capital, best in assets quality, strong branch network and intensive digitalization initiatives. With all levers set, HDFCBANK is poised for strong business growth from the expected upturn in economy. Continuation of strong loan growth has resulted in gain of market share from its peers. Due to intensive investment in digitalization and slow down in employee expenses, we expect productivity to improve further and hence will result in cost reduction. Increase in CASA during demonetization period will help NIM to sustain at current levels despite reduction in rates due to MCLR. With the healthy capitalization ratio of Tier 1 at 12.8% we expect RoE in the range of 19%-19.5% and RoA of 2% in FY19. HDFCBANK is currently trading at 3.5x P/B FY19 and we value it (3.9x P/B, EPS growth 20% FY19) at Rs 1758 and recommend BUY.

**For details, refer to our daily report- India Equity Analytics*

Top News
• AMARAJABAT concall update:

- # GST will accelerate the demand in Truck and Tractor segment.
- # Home inverter segment may see 5-7% growth going forward. (market share 33%)
- # Company's focus is to increase presence in the automotive segment.
- # Telecom battery segment 5-6 percent growth (market share 48%)
- # 30% market share target for Truck and Tractor segment. Currently 15% market share
- # EBITDA margin guidance of 14-16%
- # current capacity utilization in Tubular battery segment is around 75-77%
- # On the electric vehicle side 3 wheelers have huge opportunity with market size of Rs.1500 crore. (E-rickshaw revenue: currently 2% of company's total revenue)
- # Management expects that PV segment will take some time to gain popularity on the electric vehicle front.

• **Gruh Finance mgt Guideline** : The company would definitely look better than what it has been in the past because post-Budget the sentiment has become positive amongst private developers. The state governments will move at their own pace. However, that could improve the supply situation, while the demand already exists.

The company focuses on pure housing loans but over the last few years the loan asset growth had declined and in FY17 it was around 19 percent but going forward, in the next 2-3 years it should be on a rising trend

• Cipla concall update:

Company is expanding its capacity in the key markets like US. In Q4FY17, company has made provision of Rs.57 Cr for the impairment of assets.

Company has planned to file 20-25 ANDA's in FY18.

There is de-stocking in the channel due to GST which may impact business in the Q1FY18.

Management is optimistic about margin expansion going forward.

There is a Rs. 400 Cr non-cash impairment of assets included in depreciation in the last quarter which impacted the PAT in Q4FY17.

Cipla has gained market share to 14% in US according to IMS data.

Few significant products are in pipeline to be launched in the second half of FY18.

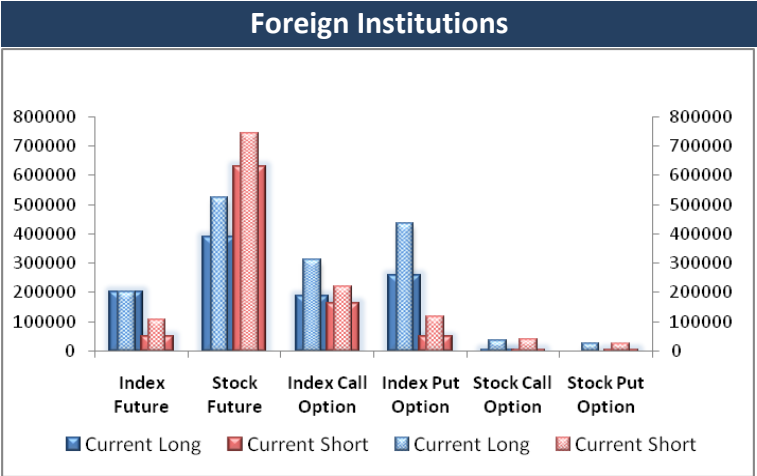
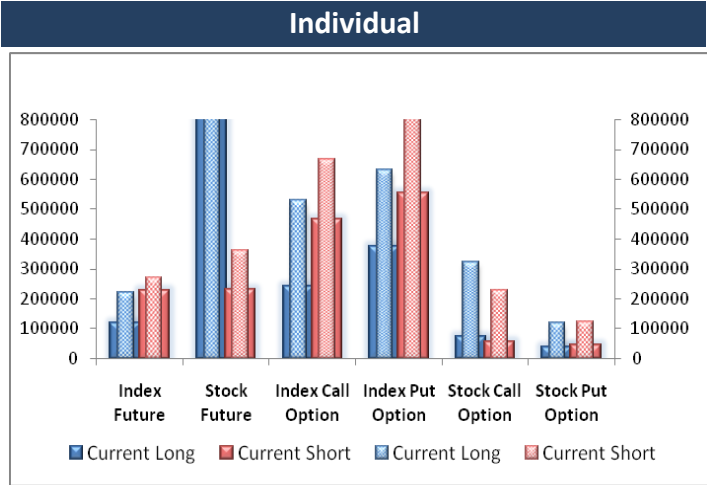
• **S&P Global Ratings** revised Glenmark Pharmaceuticals' outlook to negative from stable due to likely slower revenue growth with profitability constrained by natural price erosion. The negative outlook reflects the risk of delayed deleveraging for Glenmark, resulting in a ratio of debt to EBITDA.

• CCI has approved Tatas' purchase of 21.63 per cent stake in group firm Tata Teleservices from Japan's NTT Docomo, taking the long- pending billion-dollar deal a step closer to completion . A joint filing was made with CCI for acquisition of share amounting to 21.63 per cent in TTSL by Tata Sons and four other group firms -- Tata Steel, Tata Industries, Tata Communications and Tata Power.

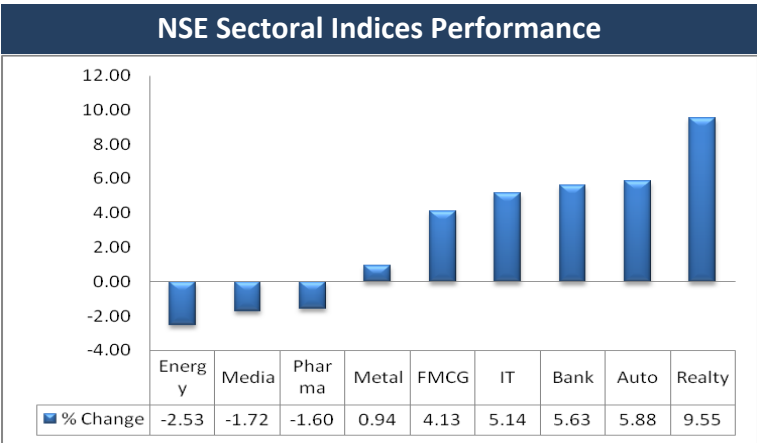
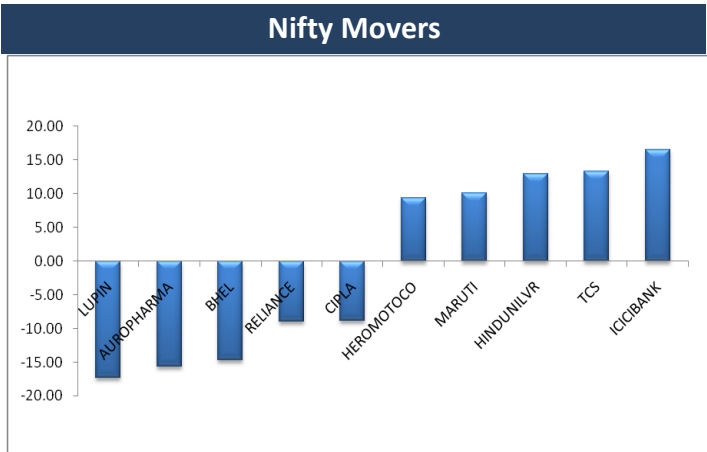
• **Precision Camshafts** is talking to companies in its segment for a buy-out which it hopes to achieve before the end of this year. The company which makes 150 varieties of camshafts that go in the heart of a car's engine said that it is looking for companies that are into critical components business for a takeover.

• **Suven Life Sciences** announced initiation of phase 1 clinical trial and first dosing of a chemical entity intended for the treatment of major depressive disorder.

F&O OPEN INTEREST (Number of Contracts)



MARKET MOVERS (1 MONTH CHANGE)



TRADING IDEAS

Scrip	Reco	Initiation Price	Target 1	Target 2	Stop Loss	Rational
MINDTREE	Buy	543.9	564	580	518	The stock has given a price volume breakout above Rs 525 yesterday. some fresh rally is likely to emerge from the current level.
VEDL June 220 PE	Short (1 Lot =3500)	5.15	2	0.5	8	After getting a strong support at 200 DMA (near Rs 220), the stock has given a sharp pullback rally yesterday. In the short term it is very unlikely to breach that level

Result Calendar Q4FY17

BSE Code	Company Name	Date	BSE Code	Company Name	Date
523395	3MINDIA	26-May-17	530457	CINERAD	26-May-17
526881	63MOONS	26-May-17	532104	CMSINFO	26-May-17
514274	AARVEEDEN	26-May-17	531210	COLINZ	26-May-17
532831	ABHISHEK	26-May-17	504340	CONFINT	26-May-17
517356	ACIIN	26-May-17	524506	CORALAB	26-May-17
530901	ACIL	26-May-17	530755	CORNE	26-May-17
507852	ADDIND	26-May-17	533144	COX&KINGS	26-May-17
532727	ADHUNIK	26-May-17	526181	CROMAKM	26-May-17
532875	ADSL	26-May-17	539876	CROMPTON	26-May-17
533221	AHLWEST	26-May-17	521220	DAMOINDUS	26-May-17
514394	AJIL	26-May-17	530393	DBSTOCKBRO	26-May-17
539523	ALKEM	26-May-17	512121	DELINFRA	26-May-17
531720	ALPGRAPH	26-May-17	504256	DELTRON	26-May-17
538423	ALPSMOTOR	26-May-17	537536	DENISCHEM	26-May-17
539277	ALSTONE	26-May-17	512445	DEVITRD	26-May-17
526439	AMBIT	26-May-17	539405	DITCO	26-May-17
526241	AMRAPLIN	26-May-17	532488	DIVISLAB	26-May-17
506260	ANUHPHR	26-May-17	532868	DLF	26-May-17
531179	ARMANFIN	26-May-17	532707	DYNPRO	26-May-17
514482	ASAHIIND	26-May-17	534927	EBFL	26-May-17
532853	ASAHISONG	26-May-17	534839	EFPL	26-May-17
507526	ASALCBR	26-May-17	526705	ELEMARB	26-May-17
539099	ATHCON	26-May-17	531144	ELFORGE	26-May-17
538713	ATISHAY	26-May-17	530835	ELTROL	26-May-17
531310	AVAILFC	26-May-17	531155	EPSOMPRO	26-May-17
524516	BACPHAR	26-May-17	533261	EROSMEDIA	26-May-17
530197	BAGADIA	26-May-17	514118	ESKAY	26-May-17
523186	BAPACK	26-May-17	533704	ESSARSHPNG	26-May-17
500048	BEML	26-May-17	500650	EXCELINDUS	26-May-17
533499	BGLOBAL	26-May-17	532084	FASTRAENT	26-May-17
505681	BIMETAL	26-May-17	533400	FCONSUMER	26-May-17
539290	BINDALAGRO	26-May-17	531599	FDC	26-May-17
500335	BIRLACORPN	26-May-17	500940	FINOLEXIND	26-May-17
531495	BLUECOAST	26-May-17	522017	FLUIDOM	26-May-17
523133	BONINDL	26-May-17	538568	FRUTION	26-May-17
506315	BORAX	26-May-17	531854	FUNWTRD	26-May-17
540006	BULL	26-May-17	526073	GALXBRG	26-May-17
526652	CALSREF	26-May-17	538961	GENUSPAPER	26-May-17
539304	CANOPYFIN	26-May-17	532285	GEOJITFSL	26-May-17
533267	CANTABIL	26-May-17	531055	GFLFIN	26-May-17
530609	CARNATIN	26-May-17	531399	GGAUTO	26-May-17
532695	CELEBRITY	26-May-17	531758	GKCONS	26-May-17
522251	CENLUB	26-May-17	532957	GOKAKTEX	26-May-17
500093	CGPOWER	26-May-17	526729	GOLDIAM	26-May-17
530309	CHANDRAP	26-May-17	509024	GOLDLEG	26-May-17
532992	CHLLTD	26-May-17	500168	GOODYEAR	26-May-17

500170	GTNINDS	26-May-17	532906	MAANALU	26-May-17
539479	GTV	26-May-17	523248	MACPLASQ	26-May-17
530001	GUJALKALI	26-May-17	517449	MAGNAELQ	26-May-17
532160	GUJSTATFIN	26-May-17	530347	MAGNUML	26-May-17
532425	GULCHEM	26-May-17	523384	MAHAPEXLTD	26-May-17
532855	HARYNACAP	26-May-17	513554	MAHASTEEL	26-May-17
508956	HBLEAS	26-May-17	500265	MAHSEAMLLES	26-May-17
517271	HBLPOWER	26-May-17	539400	MALLCOM	26-May-17
532216	HBSTOCK	26-May-17	533204	MANDHANA	26-May-17
532847	HILTON	26-May-17	537800	MANGIND	26-May-17
500104	HINDPETRO	26-May-17	512505	MEENST	26-May-17
530853	HIPOLIN	26-May-17	513496	MEWATZI	26-May-17
504036	HIRECT	26-May-17	539957	MGL	26-May-17
505726	IFBIND	26-May-17	514450	MHLXMIRU	26-May-17
511628	IMCAP	26-May-17	531942	MILLENCY	26-May-17
590065	IMPAL	26-May-17	531456	MINAXI	26-May-17
500850	INDHOTEL	26-May-17	530955	MINDVISCAP	26-May-17
509692	INDIANCARD	26-May-17	532376	MRO-TEK	26-May-17
532612	INDOCO	26-May-17	523832	MUKATPIP	26-May-17
532150	INDRAMEDCO	26-May-17	539917	NAGARFERT	26-May-17
533329	INDTERRAIN	26-May-17	534184	NAGAROIL	26-May-17
500208	INDUNISS	26-May-17	539595	NATECO	26-May-17
506222	INEOSSTYRO	26-May-17	508989	NAVNETEDUL	26-May-17
512025	INERTIAST	26-May-17	534309	NBCC	26-May-17
517433	INSOE	26-May-17	526159	NIKHILAD	26-May-17
511433	INSTAF	26-May-17	531272	NIKKIGL	26-May-17
526871	INTECCAP	26-May-17	511714	NIMBSPROJ	26-May-17
517423	INTEGSW	26-May-17	504058	NIPPOBATRY	26-May-17
506161	ISHWATR	26-May-17	519528	NORBTEAEXP	26-May-17
511609	ISLCONSUL	26-May-17	531791	NOVAGOLD	26-May-17
500875	ITC	26-May-17	530367	NRBBEARING	26-May-17
522285	JAYNECOIND	26-May-17	538537	OMANSH	26-May-17
512233	JAYTEX	26-May-17	500312	ONGC	26-May-17
511034	JINDRILL	26-May-17	532944	ONMOBILE	26-May-17
500234	KAKATCEM	26-May-17	524372	ORCHIDPHAR	26-May-17
526668	KAMATHOTEL	26-May-17	590086	ORISSAMINE	26-May-17
506938	KAPPH	26-May-17	531859	ORVENPR	26-May-17
526067	KCCLPLASTC	26-May-17	500317	OSWALAGRO	26-May-17
537784	KCSL	26-May-17	526905	PADMAIND	26-May-17
512113	KELVINFIN	26-May-17	532521	PALRED	26-May-17
524019	KINGFA	26-May-17	531349	PANACEABIO	26-May-17
511138	KOTHARIFIN	26-May-17	511734	PASUFIN	26-May-17
524518	KREBSBIO	26-May-17	526381	PATINTLOG	26-May-17
526753	KRIPIND	26-May-17	532810	PFC	26-May-17
530149	KSLIND	26-May-17	532808	PGIL	26-May-17
531882	KWALITY	26-May-17	537839	PHOENIXTN	26-May-17
539927	LIKHAMI	26-May-17	514486	POLTC	26-May-17

539354	POLYSPIN	26-May-17	531398	SOURCENTRL	26-May-17
533239	PRAKASHSTL	26-May-17	538402	SPS	26-May-17
526490	PRATIK	26-May-17	523222	SRMENERGY	26-May-17
531437	PWASML	26-May-17	512531	STCINDIA	26-May-17
590070	RADAAN	26-May-17	504180	STDBAT	26-May-17
531273	RADHEDE	26-May-17	530759	STERTOOLS	26-May-17
532441	RAINBOWDQ	26-May-17	522085	STONEIN	26-May-17
500358	RAMAPETRO	26-May-17	506655	SUDARSCHEM	26-May-17
537840	RAUNAEPC	26-May-17	530763	SUNBRIGHT	26-May-17
504341	RAVINDT	26-May-17	500404	SUNFLAG	26-May-17
531207	RAYLA	26-May-17	524715	SUNPHARMA	26-May-17
531646	RFLINT	26-May-17	530845	SUNSHIEL	26-May-17
520008	RICOAUTO	26-May-17	512179	SUNTECK	26-May-17
517496	RICOHQ	26-May-17	532733	SUNTV	26-May-17
526492	RISHIROOP	26-May-17	513277	SUPERFORGE	26-May-17
531447	ROCKONENT	26-May-17	537259	SUYOG	26-May-17
531822	RODIUM	26-May-17	503659	SW1	26-May-17
539561	ROXY	26-May-17	539406	SWAGTAM	26-May-17
533552	RUPA	26-May-17	505685	TAPARIA	26-May-17
504335	RUTRINT	26-May-17	500770	TATACHEM	26-May-17
515043	SAINTGOBAIN	26-May-17	532755	TECHM	26-May-17
590051	SAKSOFT	26-May-17	533281	TECHNO	26-May-17
531781	SAPANCHEM	26-May-17	533164	TEXMOPIPES	26-May-17
533259	SASTASUNDR	26-May-17	531910	TOHELPH	26-May-17
539404	SATIN	26-May-17	500420	TORNTPHARM	26-May-17
512393	SHARDUL	26-May-17	500251	TRENT	26-May-17
540072	SHIVAEXPO	26-May-17	531703	TRIBHSG	26-May-17
522237	SHIVAGR	26-May-17	512101	TRIPR	26-May-17
512463	SHRGLTR	26-May-17	531659	TSL	26-May-17
531219	SHYAMAINFO	26-May-17	532515	TVTODAY	26-May-17
505529	SHYAMHO	26-May-17	538706	ULTRACAB	26-May-17
513472	SIMPLEXCAS	26-May-17	506685	ULTRAMAR	26-May-17
523023	SINCLAIR	26-May-17	500231	UMANGDAIR	26-May-17
532795	SITINET	26-May-17	532398	UMESLTD	26-May-17
537669	SIVI	26-May-17	531963	UNICRSE	26-May-17
504398	SJCORP	26-May-17	523519	UNIOFFICE	26-May-17
500472	SKFINDIA	26-May-17	532646	UNIPLY	26-May-17
536592	SKFL	26-May-17	531091	UNITDCR	26-May-17
521161	SLSTLQ	26-May-17	511764	UPASAFN	26-May-17
539010	SMADL	26-May-17	539132	VEGETABLE	26-May-17
539494	SMARTFIN	26-May-17	531015	VENMAX	26-May-17
500391	SMDYECH	26-May-17	511389	VIDEOIND	26-May-17
522042	SMENER	26-May-17	532721	VISASTEEL	26-May-17
505827	SNL	26-May-17	524576	VIVIDIND	26-May-17
513699	SOLIDSTON	26-May-17	522267	VJLAXMIE	26-May-17
533520	SORILHOLD	26-May-17	523888	VRWODAR	26-May-17
532679	SORILINFRA	26-May-17	507410	WALCHANNAG	26-May-17

511074	WEIZFIN	26-May-17	517236	CALCOM	27-May-17
538382	WESTLEIRES	26-May-17	532483	CANBK	27-May-17
519214	WILLIMFI	26-May-17	530789	CEEJAY	27-May-17
526586	WIMPLAST	26-May-17	504671	CHASBRT	27-May-17
504998	WMINIMT	26-May-17	530191	CHROMATIC	27-May-17
505583	WWTECHHOL	26-May-17	530829	CILSEC	27-May-17
512553	ZENITHEXPO	26-May-17	507515	CJGEL	27-May-17
512017	ZEXDONTR	26-May-17	535142	CNEL	27-May-17
531404	ZICOM	26-May-17	538770	CRANEINFRA	27-May-17
519064	ZKHANDEN	26-May-17	530423	CRBSHAR	27-May-17
512004	ZNILKENG	26-May-17	538521	CROWNTOURS	27-May-17
512381	ZNIVEMER	26-May-17	531380	CSURGSU	27-May-17
512062	ZSANMCOM	26-May-17	538476	CTL	27-May-17
503624	ZSVARAJT	26-May-17	501945	DHENUBUILD	27-May-17
503622	ZSVTRADI	26-May-17	526315	DIVSHKT	27-May-17
501386	ZSWASTSA	26-May-17	526285	DIVYAJYQ	27-May-17
539544	ABHIINFRA	27-May-17	535694	EDSL	27-May-17
533096	ADANIPOWER	27-May-17	533218	EMAMIINFRA	27-May-17
539254	ADANITRANS	27-May-17	504008	EMCO	27-May-17
514113	ADINATH	27-May-17	512135	ENSSI	27-May-17
521141	ADITYASP	27-May-17	517264	FINELINE	27-May-17
540025	ADVENZYMES	27-May-17	522195	FRONTSP	27-May-17
532806	AICHAMP	27-May-17	504697	GALADA	27-May-17
524598	AKSCHEM	27-May-17	532183	GAYATRI	27-May-17
530973	ALFAICA	27-May-17	531744	GINISILK	27-May-17
532327	ALLSOFT	27-May-17	513507	GUJCONT	27-May-17
531400	ALMONDZ	27-May-17	514386	GUJCOTEX	27-May-17
539693	ALORA	27-May-17	523836	GUJRAFIA	27-May-17
531978	AMBIKCO	27-May-17	532457	GULPOLY	27-May-17
532141	ANDHRACEMT	27-May-17	530315	HINDTIN	27-May-17
511605	ARIHCAPM	27-May-17	535217	HPCBL	27-May-17
516064	ARROWGREEN	27-May-17	539724	HYPERSOFT	27-May-17
533163	ARSSINFRA	27-May-17	522289	IFMIMPX	27-May-17
540024	ASHARI	27-May-17	532414	IKFTECH	27-May-17
500023	ASIANHOTNR	27-May-17	533177	IL&FSTRANS	27-May-17
506194	ASL	27-May-17	538541	INCEPTUM	27-May-17
522005	AUSTENG	27-May-17	531253	INDGELA	27-May-17
532797	AUTOIND	27-May-17	530005	INDIACEM	27-May-17
532989	BAFNAPHARM	27-May-17	524648	INDOAMIN	27-May-17
500038	BALRAMCHIN	27-May-17	533257	INDOSOLAR	27-May-17
511664	BGIL	27-May-17	526445	INDRANIB	27-May-17
512608	BHANDHOS	27-May-17	532851	INSECTICID	27-May-17
539799	BHARATWIRE	27-May-17	530601	JAGSONFI	27-May-17
531029	BHATEXT	27-May-17	519441	JAIDIND	27-May-17
532719	BLKASHYAP	27-May-17	501311	JAYBHCR	27-May-17
508136	BNALTD	27-May-17	506520	JAYCH	27-May-17
532321	CADILAHC	27-May-17	513693	KAJARIR	27-May-17

530201	KALLAM	27-May-17	532693	PUNJLLOYD	27-May-17
506184	KANANIIND	27-May-17	520073	RACLGEAR	27-May-17
530977	KATWAUD	27-May-17	539309	RAMASTEEL	27-May-17
508993	KEDIACN	27-May-17	530951	RAMINFO	27-May-17
511547	KIEVFIN	27-May-17	531228	RANDER	27-May-17
523218	KILBURN	27-May-17	500360	RAPICUT	27-May-17
530443	KIRANSY-B	27-May-17	532712	RCOM	27-May-17
537750	KIRANVYPAR	27-May-17	533608	RDBRL	27-May-17
532304	KJMCCORP	27-May-17	523650	REDEXPR	27-May-17
530235	KJMCFIN	27-May-17	503162	RELCHEMQ	27-May-17
532997	KSK	27-May-17	530919	REMSONSIND	27-May-17
505299	KULKPOWT	27-May-17	515085	RESTILE	27-May-17
540360	LLFICL	27-May-17	531952	RIBATEX	27-May-17
532998	LOTUSEYE	27-May-17	530251	RISAINTL	27-May-17
534338	MAXHEIGHTS	27-May-17	540358	RMC	27-May-17
531146	MEDICAMEQ	27-May-17	512565	RTEXPO	27-May-17
511276	MEFCOM	27-May-17	500367	RUBFILA	27-May-17
531338	MILESTONE	27-May-17	513295	RUCHISTR	27-May-17
505594	MULTIIN	27-May-17	539660	SAHYOGMULT	27-May-17
524709	NAGAAGRI	27-May-17	538557	SAIBABA	27-May-17
524654	NATCAPSUQ	27-May-17	507315	SAKHTISUG	27-May-17
531289	NATFIT	27-May-17	526725	SANDESH	27-May-17
513023	NBVENTURES	27-May-17	532972	SANKHYAIN	27-May-17
502168	NCLIND	27-May-17	538795	SAPPL	27-May-17
539016	NEIL	27-May-17	526885	SARLAPOLY	27-May-17
500301	NEPCMICON	27-May-17	523598	SCI	27-May-17
521192	NEPCTEX	27-May-17	539574	SCL	27-May-17
533202	NITESHEST	27-May-17	539148	SHIVALIK	27-May-17
508875	NITINCAST	27-May-17	503205	SHREERAM	27-May-17
530805	OIVL	27-May-17	530841	SHRIBCL	27-May-17
509099	OSWALEA	27-May-17	538897	SHRINIWAS	27-May-17
523151	OTCO	27-May-17	532007	SHVFL	27-May-17
531779	PADALPO	27-May-17	517411	SHYAMTEL	27-May-17
511597	PALSOFT	27-May-17	503811	SIYSIL	27-May-17
526349	PARTIND	27-May-17	539378	SML	27-May-17
517296	PHOENIXLL	27-May-17	524667	SOTL	27-May-17
530305	PICCADIL	27-May-17	523826	SOVERDIA	27-May-17
507498	PICCASUG	27-May-17	532025	SOWBHAGYA	27-May-17
524570	PODARPIGQ	27-May-17	534425	SPECIALITY	27-May-17
532933	PORWAL	27-May-17	519242	SRDAPRT	27-May-17
511016	PREMCAP	27-May-17	535601	SREEL	27-May-17
526247	PREMEXPLQ	27-May-17	530565	SSLFINANCE	27-May-17
509835	PREMSYN	27-May-17	530953	SUNILAGR	27-May-17
531688	PRITHVIEXCH	27-May-17	511185	SURYAKR	27-May-17
526009	PROCAL	27-May-17	531885	SVAINDIA	27-May-17
532524	PTC	27-May-17	506863	SWADEIN	27-May-17
512461	PUNCTRD	27-May-17	531003	SWRNASE	27-May-17

526638	TEXELIN	27-May-17	539659	VIDLI	27-May-17
507450	THIRUSUGAR	27-May-17	514302	VIPPYSP	27-May-17
532856	TIMETECHNO	27-May-17	519457	VIRATCRA	27-May-17
538607	TOYAMIND	27-May-17	531668	VISIONCO	27-May-17
506687	TRANSPEK	27-May-17	532660	VIVIMEDLAB	27-May-17
500464	UCALFUEL	27-May-17	517399	VXLINSTR	27-May-17
522014	UNIDT	27-May-17	532373	WEPSOLN	27-May-17
530997	UNIQUEO	27-May-17	514266	ZENIFIB	27-May-17
532320	VAARAD	27-May-17	530697	ZENLABS	27-May-17
530459	VALSONQ	27-May-17	505520	ZHEMHOLD	27-May-17

Earning Estimate Q4FY17					
Date	NSE CODE	SALES	SALES YoY	PAT	PAT YoY
25-May-17	ASHOKLEY	6343	6.50	425	(6.90)
25-May-17	BOSCHLTD	2790	13.10	429	(9.10)
25-May-17	BRITANNIA	2266	7.30	192	(3.30)
25-May-17	PAGEIND	484	13.80	64	6.90
25-May-17	CIPLA	3806	16.50	366	20.40
25-May-17	CONCOR	1392	(1.60)	202	43.00
25-May-17	IOC	98763	23.40	4050	227.80
25-May-17	MPHASIS	1506	(0.60)	197	2.70
26-May-17	CROMPGREAV	1084	8.30	81	6.60
26-May-17	CROMPTON	1158	2.50	26	(77.10)
26-May-17	ITC	9880	1.30	2578	8.40
26-May-17	DIVISLAB	1103	0.90	289	(10.30)
26-May-17	SUNPHARMA	7811	2.30	1461	(14.70)
26-May-17	TORNTPHARM	1500	0.10	229	(35.70)
26-May-17	SITICABLE	310	(13.00)	(30)	PL
26-May-17	HINDPETRO	51721	22.80	1110	(28.50)
26-May-17	TECHM	7540	9.50	730	(14.90)
26-May-17	NAVNETEDUL	203	10.00	13	7.30
27-May-17	CADILAHC	2508	2.40	338	(12.90)

Economic Calendar					
Country	Monday 22th May 17	Tuesday 23th May 17	Wednesday 24th May 17	Thursday 25th May 17	Friday 26th May 17
US		Flash Manufacturing PMI , Flash Services PMI , New Home Sales , Richmond Manufacturing Index.	HPI m/m , Existing Home Sales , Crude Oil Inventories , FOMC Meeting Minutes.	Unemployment Claims , Goods Trade Balance , Prelim Wholesale Inventories m/m , Natural Gas Storage	Core Durable Goods Orders m/m , Prelim GDP q/q , Durable Goods Orders m/m , Prelim GDP Price Index q/q , Revised UoM Consumer Sentiment , Revised UoM Inflation Expectations.
UK/EURO ZONE		French Flash Manufacturing PMI , French Flash Services PMI , German Flash Manufacturing PMI , German Flash Services PMI , German Ifo Business Climate , Flash Manufacturing PMI , Flash Services PMI , ECB Financial Stability Review , Public Sector Net Borrowing , Inflation Report Hearings , CBI Realized Sales.	GfK German Consumer Climate , Italian Retail Sales m/m , German 30-y Bond Auction	Second Estimate GDP q/q , Prelim Business Investment q/q , BBA Mortgage Approvals , ECB Monetary Policy Meeting Accounts.	French Consumer Spending m/m , Italian 10-y Bond Auction
INDIA					

Narnolia
Advance Strategy · Simple Solutions
Narnolia Securities Ltd

201 | 2nd Floor | Marble Arch Building | 236B-AJC Bose
Road | Kolkata-700 020 , Ph : 033-40501500

email: narnolia@narnolia.com,
website : www.narnolia.com

Risk Disclosure & Disclaimer: This report/message is for the personal information of the authorized recipient and does not construe to be any investment, legal or taxation advice to you. Narnolia Securities Ltd. (Hereinafter referred as NSL) is not soliciting any action based upon it. This report/message is not for public distribution and has been furnished to you solely for your information and should not be reproduced or redistributed to any other person in any form. The report/message is based upon publicly available information, findings of our research wing "East wind" & information that we consider reliable, but we do not represent that it is accurate or complete and we do not provide any express or implied warranty of any kind, and also these are subject to change without notice. The recipients of this report should rely on their own investigations, should use their own judgment for taking any investment decisions keeping in mind that past performance is not necessarily a guide to future performance & that the value of any investment or income are subject to market and other risks. Further it will be safe to assume that NSL and /or its Group or associate Companies, their Directors, affiliates and/or employees may have interests/ positions, financial or otherwise, individually or otherwise in the recommended/mentioned securities/mutual funds/ model funds and other investment products which may be added or disposed including & other mentioned in this report/message.