

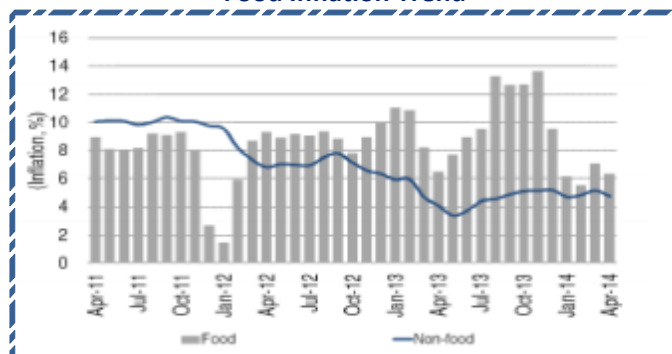
Day of the Quote

"While enthusiasm may be necessary for great accomplishments elsewhere, on Wall Street it almost invariably leads to disaster."

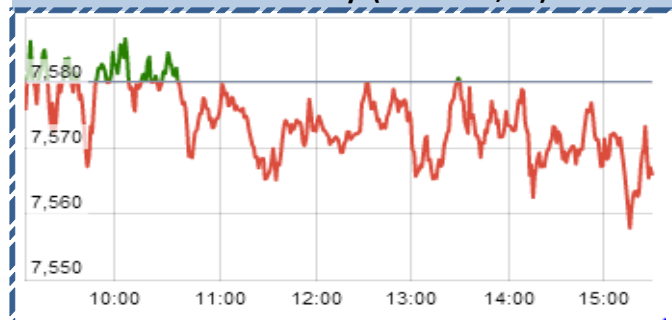
SGX NIFTY : 7576
(1 pts Down)

Chart of the Day

Food Inflation Trend



Index Action-Nifty (24th June, 14)



Index

Contents	Page	Coverage
News	3	UPDATE
Derivative snapshot	2	UPDATE
Economic calendar	4	UPDATE

MARKET

Name	Value	Change
Sensex	25313.74	(55.16)
Nifty	7569.25	(10.95)
DOW	16,867.51	49.38
NASDAQ	4,379.76	29.40
CAC	4,460.60	(57.74)
DAX	9,867.75	(70.33)
FTSE	6,733.62	(53.45)
NIKKIE	15,301.35	34.74
HANG SENG	22,990.52	123.82
EW ALL SHARE	12845.78	15.52

INSTITUTIONAL TURNOVER

FII			
Investor	Buy(Cr.)	Sale(Cr.)	Net(Cr.)
24th June,14	3739.20	3,044.57	694.63
June,14	78775.35	73,488.67	5286.68
2014	481246.05	429,955.13	51290.92
DII			
Investor	Buy(Cr.)	Sale(Cr.)	Net(Cr.)
24th June,14	1410.34	1,843.97	(433.63)
June,14	24696.03	28,691.88	(3995.85)
2014	159514.22	189,634.92	(30120.70)

COMMODITY PRICE

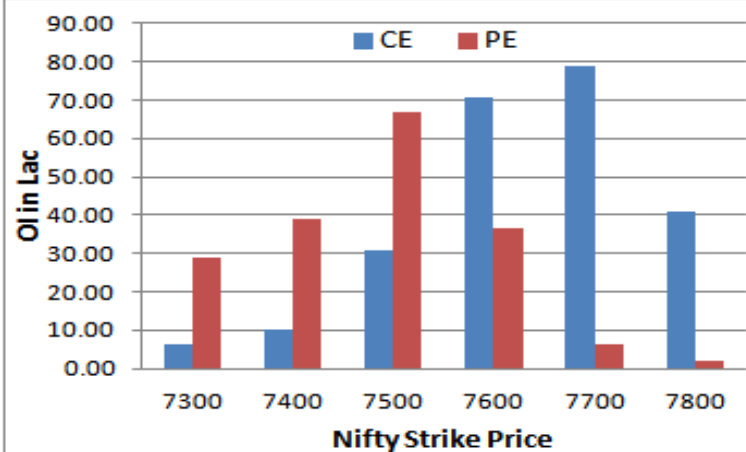
COMMODITY/CURRENCIES	Value	
GOLD	27735.00	↑
SILVER	44583.00	↑
CRUDEOIL	6373.00	↓
COPPER	417.55	↓
NATURALGAS	272.60	↑
DOLLAR/RS.	60.02	↑
EURO/RS.	81.81	↑
POUND/RS.	101.94	↑

Narnolia Securities Ltd.

NIFTY SNAPSHOT

Nifty Spot	7569.25(-10.95)
Nifty June 2014 Future	7576
Nifty July 2014 Future	7610
Nifty June 2014 Open Interest	9269800
Nifty July 2014 Open Interest	10920850
7 DMA of Spot Nifty	7554
21 DMA of Spot Nifty	7503
50 DMA of Spot Nifty	7178
VOLATILITY INDEX (VIX)	18.31(-0.88)
PUT CALL RATIO	1.01

Nifty (June Series) Option OI Distribution:



Activity of Nifty (June Series) Strike

Strike	CALL		PUT	
	OI	% Chng	OI	% Chng
7300	632050	-56.5	2891450	-8.1
7400	992850	-28.9	3877450	-6.3
7500	3078200	-23.4	6680100	0.6
7600	7081250	8.6	3683100	-10.3
7700	7906300	0.8	635550	-23.7
7800	4072000	-10.7	182300	-19.5

Fresh Long Seen In (Rising OI -Rising Price)

Scrip	OI	OI ch%	CMP	Ch%
BIOCON	4,734,500	18.1	507.7	4.2
DRREDDY	1,987,625	10.0	2479.4	0.8
IRB	14,276,000	8.9	229.0	5.8
DISHTV	50,728,000	8.6	58.0	1.8
RECLTD	4,331,000	7.5	368.0	4.3

PCR (OI)

STOCK	T1	T2
UBL	0.26	0.13
PFC	0.43	0.32
ASHOKLEY	0.47	0.38
MARUTI	1.30	1.06
IRB	0.61	0.50



FIIs Activity (Fig in Cr)

Segment	Buy	Sell	Net
INDEX FUTURE	5,682	5,504	178
INDEX OPTION	10,364	10,926	(562)
STOCK FUTURE	13,941	14,450	(509)
STOCK OPTION	1,944	2,063	(119)
TOTAL	31,931	32,944	(1,012)

Fresh Shorts Seen In: (Rising OI -Falling Price)

Scrip	OI	OI ch%	CMP	Ch%
IDEA	45,116,000	9.5	133.5	-2.5
ONGC	28,230,000	9.2	436.9	-1.4
BHARTIARTL	17,311,000	9.0	336.4	-1.3
ITC	37,403,000	7.9	316.1	-1.4
ICICIBANK	14,604,500	6.9	1419.9	-1.3

PCR (OI)

STOCK	T1	T2
DISHTV	0.38	0.51
PETRONET	0.41	0.52
IBREALEST	0.47	0.59
HDIL	0.34	0.42
YESBANK	0.56	0.65

Markets Snapshot

Top Price Performers

Top Performers 1D	% Change	Top Performers 1W	% Change	Top Performers 1M	% Change
KAKATCEM	19.97	KERALACHEM	43.79	WEBELSOLAR	149.06
NAHARCAP	14.92	MAHINDFORG	37.05	PRAKASHCON	137.01
ARIES	14.23	CEATLTD	37.01	RMMIL	131.03
GAEL	13.75	MAHINDUGIN	34.23	AUSTRAL	130.43
KERALACHEM	13.09	ORIENTCONT	31.62	MVL	125.20

Worst Price Performers

Worst Performers 1D	% Change	Worst Performers 1W	% Change	Worst Performers 1M	% Change
MAHINDUGIN	(8.95)	DHANUS	(27.78)	SHRGLTR	(44.53)
RUSHIL	(7.98)	SIGRUN	(26.32)	GLOBALCA	(40.75)
NATCOPHARM	(7.34)	BILPOWER	(22.03)	SIGRUN	(33.33)
TATAMTRDVR	(7.21)	RUSHIL	(20.27)	SHREETULSI	(32.58)
DHANUS	(7.14)	OISL	(19.67)	SUBEX	(26.65)

Top News :

- IPCA LAB Mgt guideline :** The company is currently seeking the shareholder approval for the proposed ESOPs scheme. New ESOP scheme could impact the earnings per share of the company by 2-3 percent. Company is expected to receive business orders worth Rs 500 crore in FY15 as against Rs 430 crore in FY14, hopes to maintain margins at current levels of 24 percent, and also expects Rs 300 crore annual revenue from anti-malarial tender for two years.
- PRIME FOCUS Mgt Guideline :** The merger of Prime Focus World with Double Negative will create a consolidated group of visual effects services, 2D to 3D conversions and animation services. Prime Focus will continue to hold 80 percent in the new entity post-merger. The company currently holds nearly 94 percent in Prime Focus World.
- United Bank of India :** bank has a good case of willful defaulting on the part of beleaguered Kingfisher Airlines , bank had given the company time until June 28 to present its case before a committee. However, the company has sought more time, so the hearing may now happen in the first week of July.
- CIL :** The industry has welcomed the government's proposal to expedite environmental clearances for state-owned Coal India's expansion projects so that the PSU could quickly ramp up production.
- The government has decided to increase in the minimum support price (MSP) of paddy by less than 5% for the current crop year, which it said won't impact inflation.**
- Natural Gas :** In a setback to gas producers like Reliance Industries, the government today postponed revision in natural gas prices by three months pending a "comprehensive" review to make a controversial pricing formula more palatable. **Oil Minister Dharmendra Pradhan** said the current USD 4.2 per million British thermal unit rate for gas, which would have jumped to USD 8.8 if a formula approved by the previous UPA government was implemented on July 1, will continue till September-end.
- Auto, Consumer Durables :** Govt. announced the decision to continue with low excise duty for six months till December 31 for auto, consumer durables and capital goods sector. Excise duty on commercial vehicles and two-wheelers was cut to 8 percent from 12 percent and on SUV's it was reduced to 24 percent from 30 percent. The excise duty on large and mid-segment cars was slashed to 24 percent from 27 percent.
- U.S. Commerce Department** said that total durable goods orders, which include transportation items, fell by a seasonally adjusted 1% last month, disappointing expectations for a 0.2% increase.
- Energy Information Administration** said that U.S. Crude Oil Inventories rose to a seasonally adjusted annual rate of 1.742M, from -0.579M in the preceding month. Analysts had expected U.S. Crude Oil Inventories to fall -1.557M last month.
- Instituto Nacional de Estadística** said that Spanish PPI fell to a seasonally adjusted -0.4%, from -0.2% in the preceding month whose figure was revised down from 0.1%. Analysts had expected Spanish PPI to fall to -0.6% last month.
- Research group Gfk** said that its index of Germany's consumer climate rose to 8.9, from 8.6 in the preceding month whose figure was revised up from 8.5. Analysts had expected Gfk consumer climate to remain unchanged at 8.5 last month.

Economic Calendar					
	Monday 23-Jun-14	Tuesday 24-Jun-14	Wednesday 25-Jun-14	Thursday 26-Jun-14	Friday 27-Jun-14
US	Existing Home Sales .	S&P/CS Composite-20 HPI y/y , Flash Manufacturing PMI , Flash Services PMI , CB Consumer Confidence , New Home Sales , Richmond Manufacturing Index .	Core Durable Goods Orders m/m , Durable Goods Orders m/m , Final GDP q/q , Final GDP Price Index q/q , Crude Oil Inventories.	Unemployment Claims , Core PCE Price Index m/m , Personal Spending m/m , Personal Income m/m , Natural Gas Storage .	Revised UoM Consumer Sentiment , Revised UoM Inflation Expectations .
UK/EURO ZONE	CBI Realized Sales , Belgian NBB Business Climate .	French Flash Manufacturing PMI , German Flash Manufacturing PMI , German Flash Services PMI , German Ifo Business Climate , Flash Manufacturing PMI , Flash Services PMI , BBA Mortgage Approvals , Inflation Report Hearings .	Nationwide HPI m/m , German Prelim CPI m/m , Italian Prelim CPI m/m , BOE Financial Stability Report .	GfK German Consumer Climate , Italian Monthly Unemployment Rate , Current Account , Final GDP q/q , Revised Business Investment q/q .	Net Lending to Individuals m/m , Index of Services 3m/3m , M4 Money Supply m/m , Mortgage Approvals .
INDIA					



Narnolia Securities Ltd

124, 1st floor 7/1, Lords Sinha Road Kolkata 700071, Ph 033-22821251 Toll Free no : 1-800-345-4000

email: research@narnolia.com, website
: www.narnolia.com

Risk Disclosure & Disclaimer: This report/message is for the personal information of the authorized recipient and does not construe to be any investment, legal or taxation advice to you. Narnolia Securities Ltd. (Hereinafter referred as NSL) is not soliciting any action based upon it. This report/message is not for public distribution and has been furnished to you solely for your information and should not be reproduced or redistributed to any other person in any form. The report/message is based upon publicly available information, findings of our research wing "East wind" & information that we consider reliable, but we do not represent that it is accurate or complete and we do not provide any express or implied warranty of any kind, and also these are subject to change without notice. The recipients of this report should rely on their own investigations, should use their own judgment for taking any investment decisions keeping in mind that past performance is not necessarily a guide to future performance & that the value of any investment or income are subject to market and other risks. Further it will be safe to assume that NSL and /or its Group or associate Companies, their Directors, affiliates and/or employees may have interests/ positions, financial or otherwise, individually or otherwise in the recommended/mentioned securities/mutual funds/ model funds and other investment products which may be added or disposed including & other mentioned in this report/message.