

SGX NIFTY : 7803 ( 82 Pt Down )

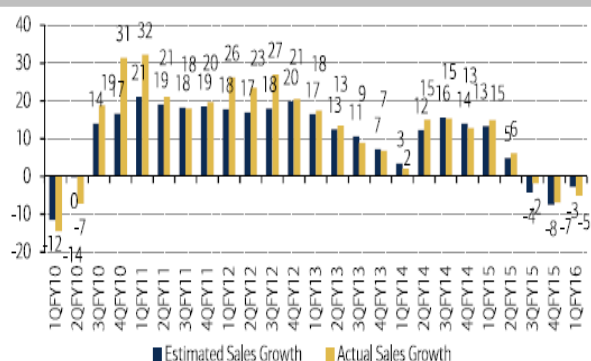
**Quote of the Day**

"Long-term competitive advantage in a stable industry is what we seek in a business. If that comes with rapid organic growth, great. But even without organic growth, such a business is rewarding. We will simply take the lush earnings of the business and use them to buy similar businesses elsewhere."

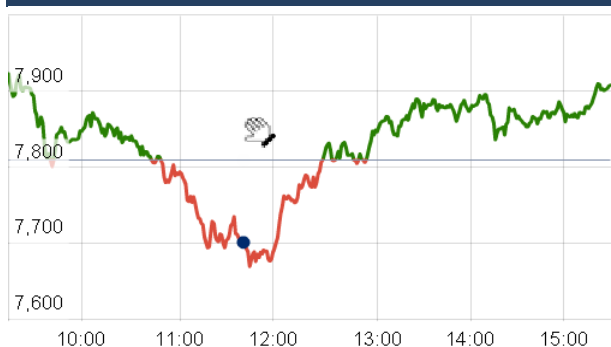
Warren Buffett

**Chart of the Day**

**Sensex Sales Growth**



**Index Action Nifty ( 25th Aug 15 )**



**Index**

Contents	Page	Coverage
News	2	Update
Economic Calendar	3	Update

**Market**

Name	Value	Change
Sensex	26,032.38	290.82
Nifty	7880.70	71.70
DOW	17,545.18	67.78
NASDAQ	4,506.90	(19.46)
CAC	4,564.86	181.40
DAX	10,128.12	479.69
FTSE	6,081.34	182.47
NIKKIE	17,975.63	168.93
HANG SENG	21,395.44	(9.52)
EW ALL SHARE	13583.4	180.65

**Instituional Turnover**

**FII**

Investor	Buy(Cr.)	Sale(Cr.)	Net(Cr.)
25th Aug,15	6665.15	8745.16	(2080.01)
Aug,15	72524.27	85660.54	(13136.27)
2015	794015.82	785000.88	9014.94

**DII**

Investor	Buy(Cr.)	Sale(Cr.)	Net(Cr.)
25th Aug,15	4509.66	2546.57	1963.09
Aug,15	37420.80	26956.54	10464.26
2015	314209.04	278042.24	36166.80

**Commodity Price**

Commodity/Currencies	Value	
GOLD	26775.00	↓
SILVER	34643.00	↓
CRUDEOIL	42.31	↓
COPPER	337.70	↑
NATURALGAS	178.00	↓
DOLLAR/RS.	66.10	↓
EURO/RS.	76.36	↓
POUND/RS.	103.96	↓

## Market Snapshot

### Top Price Performers

Top Performers 1D	% Change	Top Performers 1W	% Change	Top Performers 1M	% Change
IBREALEST	20.21	SHRGLTR	35.65	FALCONTYRE	42.38
BINNY	17.81	ORISSASP	35.22	ENERGYDEV	48.71
VIPUL	17.30	ENERGYDEV	34.63	JUBLINDS	50.75
DLF	16.82	DELTACORP	16.31	GRAVISSHO	51.32
BILENERGY	15.00	IMPEXFERRO	14.98	SHRENUJ	85.25

### Worst Price Performers

Worst Performers 1D	% Change	Worst Performers 1W	% Change	Worst Performers 1M	% Change
GOLDINFRA	(14.03)	AMTEKAUTO	(59.63)	AMTEKAUTO	(67.98)
INDBANK	(12.95)	VAKRANSOFT	(41.69)	AMTEKINDIA	(62.12)
JBFIND	(12.37)	CENTRALBK	(39.38)	JYOTISTRUC	(55.54)
PARACABLES	(11.98)	ARSHIYA	(31.21)	TRF	(51.49)
VIKASGLOB	(11.00)	AHMEDFORGE	(30.95)	AHMEDFORGE	(51.44)

## Top News

- **GVK** receives provisional completion certificate for Raj proj GVK Power & Infrastructure Ltd has received provisional completion certificate from the competent authority to commence the operations of a road project in Rajasthan. GVK Deoli Kota Expressway Pvt Ltd, a wholly-owned subsidiary of company has received the Provisional completion certificate...to commence the commercial operations of its 83.04 KM of road between Deoli-Kota section of National Highway..in the State of Rajasthan

- **Praj Industries** has acquired a further stake of 20% in its subsidiary Praj HiPurity Systems Limited " Formerly known as Neela Systems Limited" for approximately Rs. 35.70 Crore. With this, Praj HiPurity Systems Limited has become a Wholly Owned (i.e. 100%) Subsidiary of the Company

- **Jindal Steel and Power Ltd (JSPL)** will seek shareholders' nod for raising up to Rs 15,000 crore via securities for loan refinancing and capital expenditure. The firm is also evaluating various options including selling stake in its overseas subsidiaries.

- **Larsen & Toubro (L&T)** said power transmission and distribution business of L&T Construction has bagged orders worth Rs 1,563 crore in July and August. The company has received a breakthrough order from Tenaga Nasional Berhad (TNB) for design, manufacture, supply, installation, testing and commissioning of a 500 kV double circuit transmission line in Malaysia.

- **Multi Commodity Exchange and GIFT SEZ** signed an MoU in Mumbai for developing of an international exchange that will provide an electronic platform for facilitating trading, clearing and settlement of securities, commodities, interest rates, currencies, other classes of assets and derivatives to international investors in GIFT SEZ-IFSC.

- **IL&FS Engineering and Construction Company** has received a LOA worth Rs 190.88 crore from Madhyanchal Vidyut Vitran Nigam for rural electrification works in Shahjahanpur district of Uttar Pradesh on a turnkey basis.

- **Eicher Motors:** Royal Enfield enters Indonesia to redefine mid-size motorcycle segment

- **Welspun Corp** has entered into an agreement with Malaysia's Wasco Energy for setting up a Rs 200 crore greenfield concrete weight coating (CWC) plant at Anjar in Gujarat. Welspun Corp, which is the flagship arm of the USD 3 billion Welspun Group making steel pipes for the oil and gas sector, will hold 51 percent in the joint venture while the Malaysian partner Wasco, which is a fully-owned subsidiary of WahSeong Corporation, will own the rest .

- **JK Paper Ltd** is planning further increase its exports by 25 percent during the current year owing to availability of additional capacity. The company is actively involved in market expansion beyond the shores of India. The company's exports at over 40,000 tonnes in 2014-15 went up by nearly 150 percent over the previous year.

- **The People's Bank of China (PBOC)** was cutting the one-year benchmark bank lending rate by 25 basis points to 4.6 percent, cutting one-year benchmark deposit rates by the same amount, and reducing reserve requirements (RRR) by 50 basis points to 18 percent for most big banks.

- **Spanish PPI remained** unchanged at a seasonally adjusted -1.3%, from -1.3% in the preceding month whose figure was revised up from -1.4%. Analysts had expected Spanish PPI to rise to -1.3% last month.

- **Swiss employment level** rose to a seasonally adjusted 4.240M, from 4.225M in the preceding quarter. Analysts had expected Swiss employment level to rise to 4.240M in the last quarter.

- **Polish Unemployment Rate** fell to a seasonally adjusted 10.1%, from 10.3% in the preceding month. Analysts had expected Polish Unemployment Rate to fall to 10.1% last month.

- **Statistisches Bundesamt Deutschland said that German GDP** rose to a seasonally adjusted 0.4%, from 0.4% in the preceding quarter. Analysts had expected German GDP to rise 0.4% in the last quarter.

### Economic Calendar

Country	Monday 24th Aug 15	Tuesday 25th Aug 15	Wednesday 26th Aug 15	Thursday 27th Aug 15	Friday 28th Aug 15
US		CB Consumer Confidence , New Home Sales , S&P/CS Composite-20 HPI y/y , HPI m/m .	Core Durable Goods Orders m/m ,Durable Goods Orders m/m , Crude Oil Inventories .	Prelim GDP q/q , Unemployment Claims , Prelim GDP Price Index q/q , Pending Home Sales m/m , Natural Gas Storage .	Goods Trade Balance , Core PCE Price Index m/m , Personal Spending m/m , Personal Income m/m , Revised UoM Consumer Sentiment , Revised UoM Inflation Expectations .
UK/EURO ZONE	German Ifo Business Climate	BBA Mortgage Approvals , Belgian NBB Business Climate , German Final GDP q/q , German Ifo Business Climate .	CBI Realized Sales , Nationwide HPI m/m , German 30-y Bond Auction .	German Prelim CPI m/m ,Employment Level , M3 Money Supply y/y , Private Loans y/y , Second Estimate GDP q/q , Prelim Business Investment q/q , Index of Services 3m/3m , Italian 10-y Bond Auction .	Spanish Flash CPI y/y ,German Import Prices m/m , Italian Monthly Unemployment Rate , Italian Quarterly Unemployment Rate , Italian Prelim CPI m/m
INDIA					

## Narnolia Securities Ltd.

### Narnolia Research Lab

Stellar IT Park | 5th Floor | Office Space No. 6 | Tower-IIInd Plot No. C-25 | Sector-62 | Noida |  
Ph : 0120-4215110

### Central Strategy Desk - Kolkata

124 | 1st Floor | 7/1 Lords Sinha Road | Kolkata - 71  
Ph : 033-22821500 | M : 93347 14418, 98302 69810